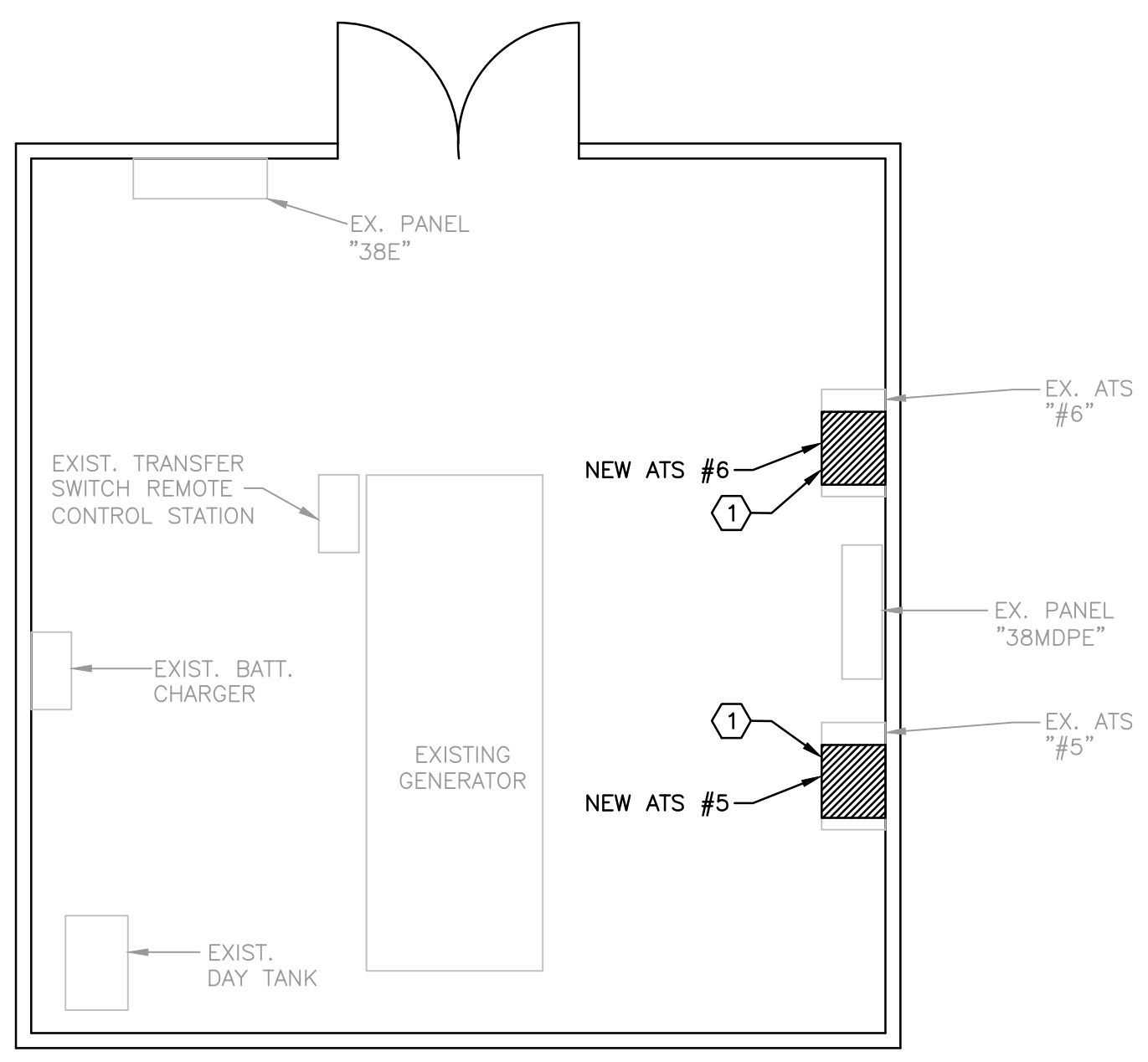
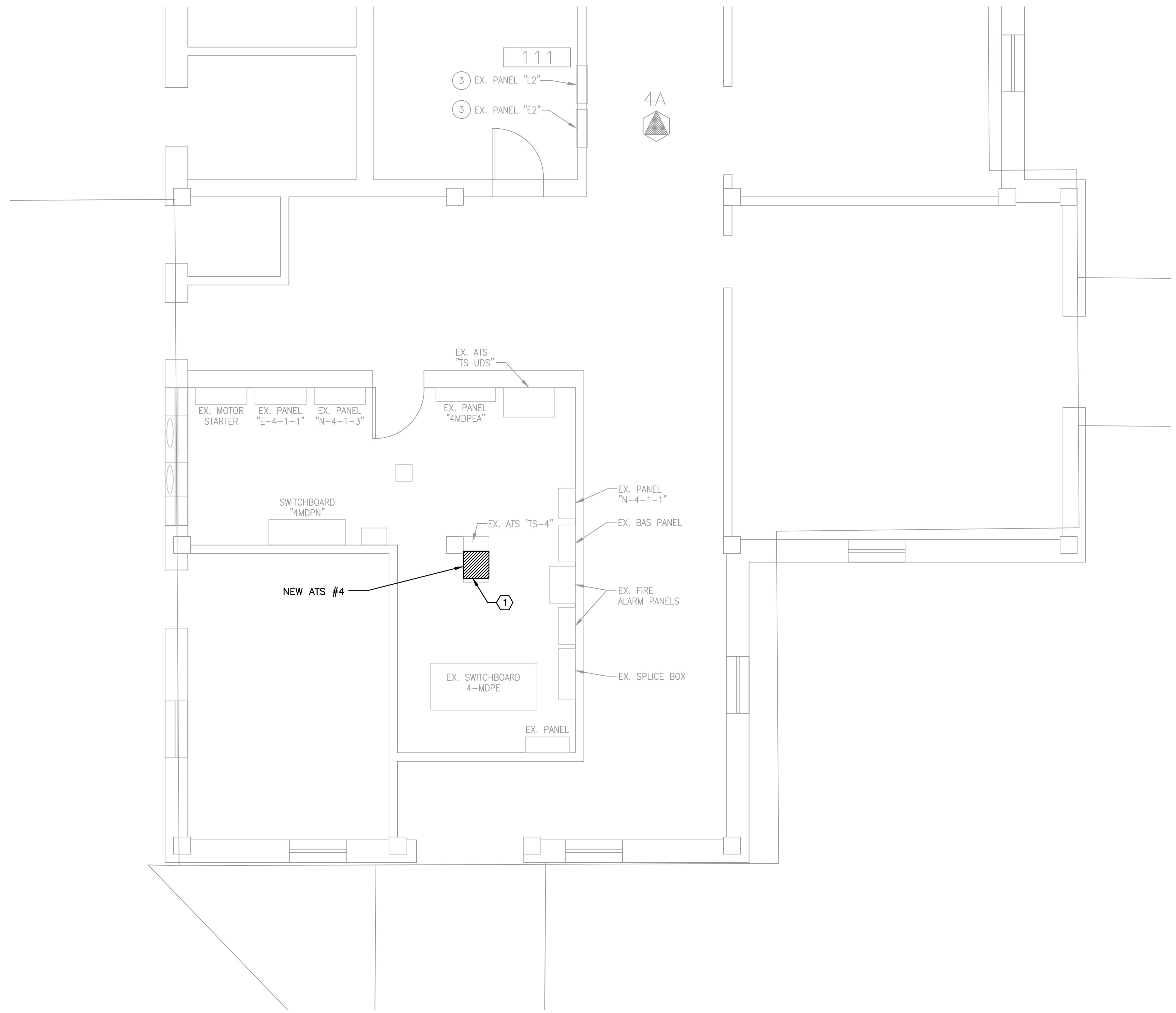


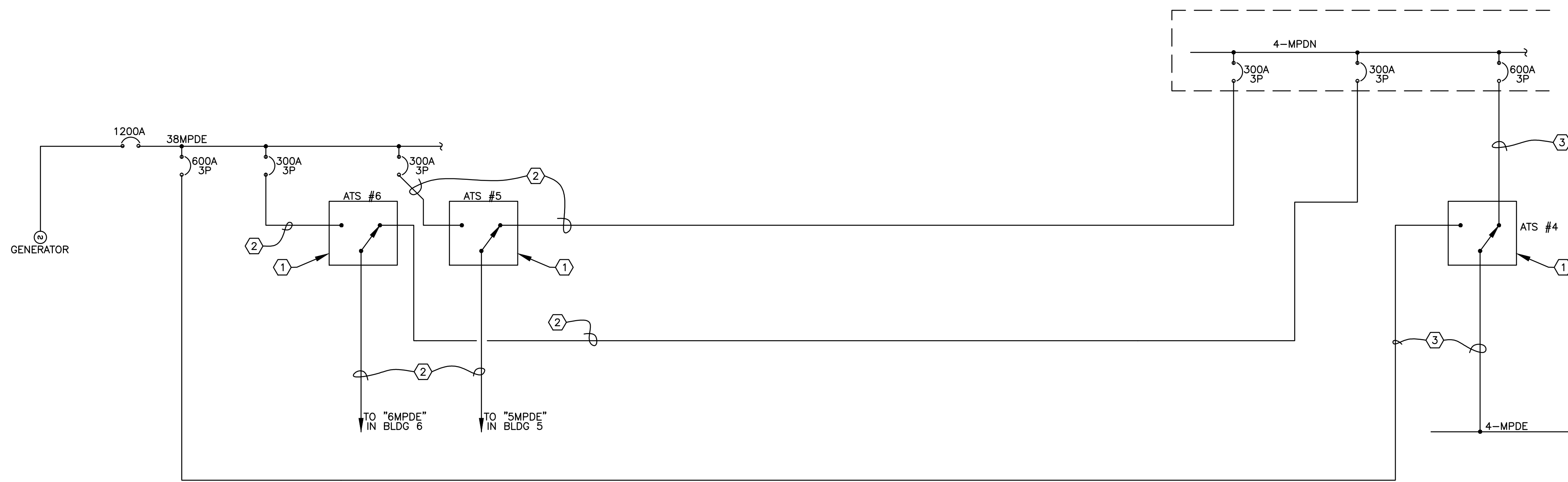
three inches = one foot
one and one half inches = one foot
one inch = one foot
three quarters inch = one foot
one half inch = one foot
three eighths inch = one foot
one quarter inch = one foot
one eighth inch = one foot



1 BUILDING 38 PLAN
SCALE: N.T.S.



2 BUILDING 4 FIRST FLOOR PLAN
SCALE: 1/4" = 1'-0"



3 PARTIAL ONE-LINE DIAGRAM
SCALE: N.T.S.

ELECTRIC NOTES

- REPLACE EXISTING TRANSFER SWITCH WITH NEW TRANSFER SWITCH & RECONNECT TO EXISTING FEEDERS. SEE SHEET E100 FOR TRANSFER SWITCH SCHEDULE. ALSO, RECONNECT GENERATOR START CONDUCTORS, REMOTE CONTROL & ANNUNCIATION CONDUCTORS, & ELEVATOR CONTROL CIRCUIT CONDUCTORS (WHERE APPLICABLE)
- EXISTING 4 #500MCM & 1 #3 GRND - 3 1/2" C. TO REMAIN
- EXISTING 8 #350MCM & 2 #1 GRND IN 2 - 3" C. TO REMAIN

Revisions:		Date:		CONSULTANTS:		Professional Seal:		ARCHITECT/ENGINEERS:		12021-CAL		Drawing Title:		Project Title:		Project Number:		Office of Facilities Management			
				E E Consultants, Inc.		RAYMOND J. DUAN, JR.		BH&B		Barron Heinberg & Brocato		BUILDING 4 & 38 PARTIAL PLANS & ONE-LINE		A&E DESIGN REPLACEMENT OF TRANSFER SWITCH FINAL SUBMITTAL		502-11-111					
				PROFESSIONAL ELECTRICAL ENGINEERS		REGISTERED PROFESSIONAL ENGINEER				Architecture, Engineering Planning, Interior Design		Approved: Project Director		Location:		Building Number					
				301 Jackson St. Suite 204 Alexandria, LA 71301 PH: (318) 445-8870 FAX: (318) 445-4350		7-13-12		1015 Wisteria Street Alexandria, Louisiana 71301 Tel: 318-443-7291 Fax: 318-487-0678				Date:		VAMC; ALEXANDRIA, LA.		4 & 38					
														Date:		Checked:		Drawing:		Drawing Number	
														JULY 13, 2012		RJD		EEC		E102	
																				Dwg. 4 of 7	