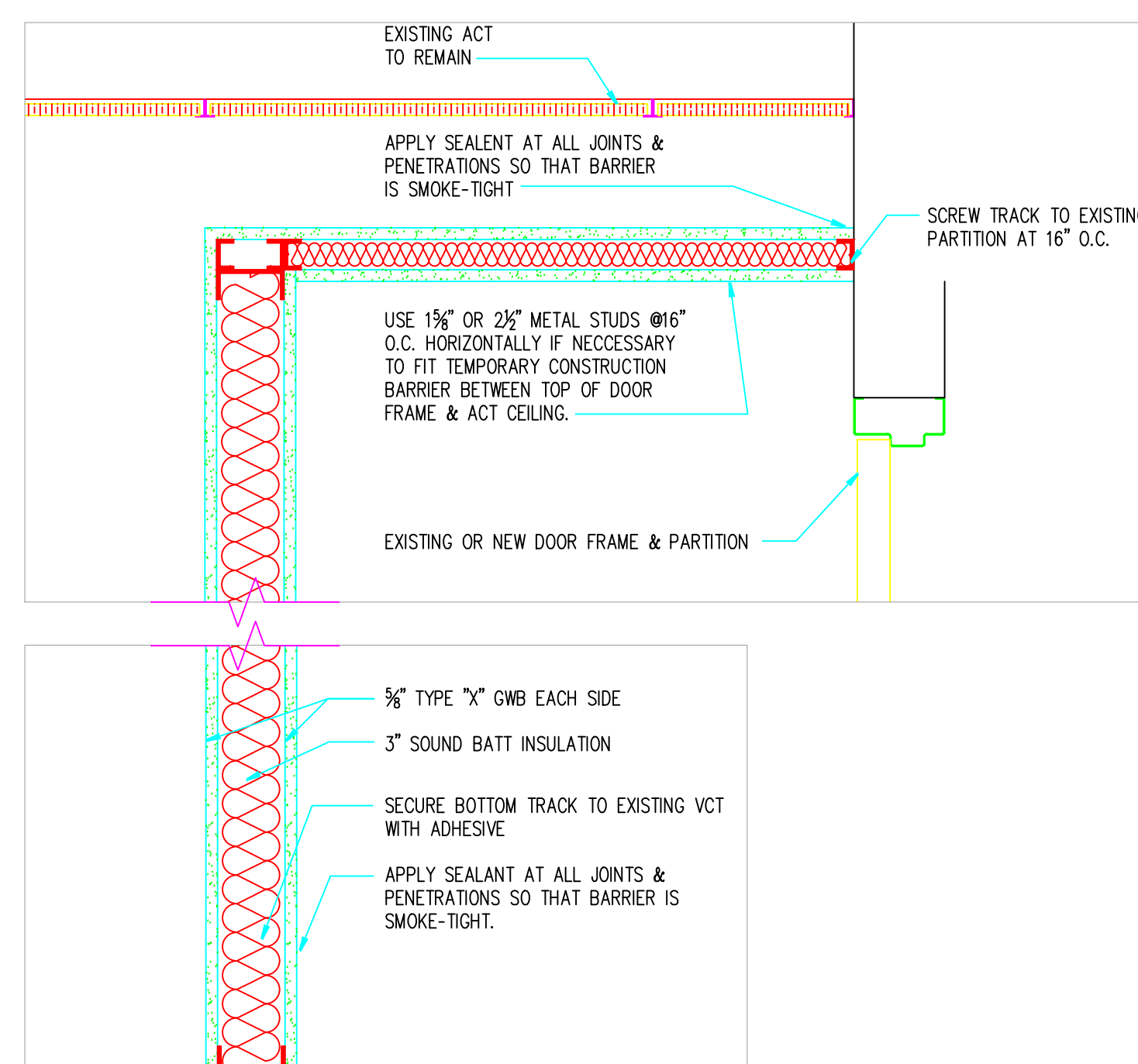




THIS PROJECT PROPOSES TO CONVERT AN EXISTING OBSERVATION ROOM WITHIN THE EMERGENCY DEPARTMENT, TO A MULTI-PURPOSE ROOM, WITH THE CAPABILITY OF BEING A PSYCHIATRIC ROOM FOR PATIENTS. THE WORK WILL BE PERFORMED DURING NORMAL BUSINESS HOURS AT THE SYRACUSE VA MEDICAL CENTER, LOCATED AT 800 IRVING AVENUE. THE WORK WILL ENTAIL THE COMPLETE REMOVAL OF THE ROOM'S EXISTING GWB, DROP CEILING, CASEWORK, SELECTED RECEPTACLES. ABUSE RESISTANT GYPSUM WALLBOARD WILL BE USED THROUGHOUT THE ENTIRE ROOM, INCLUDING WALLS, NEW SOFFIT, AND CEILING. NEW CASEWORK WILL BE USED IN THE ROOM, WITH ALL DOORS HAVING THE CAPABILITY TO BE LOCKED. THE ROOM WILL ALSO HAVE AN LCD ENCLOSURE THAT WILL SUFFICIENTLY ACCOMMODATE A 22" LCD TELEVISION. THE SINK WILL BE ENCLOSED IN THE LOCKED CASEWORK TO PREVENT ACCESS TO THE PLUMBING, AND COUNTER TOPS WILL BE SLOPED AND ROUNDED TO LESSEN THE RISK OF SELF-HARM. THE TWO EXISTING CORRIDOR WINDOWS WILL BE REMOVED AND REPLACED WITH ONE VANDAL RESISTANT WINDOW EQUIPPED WITH INTERNAL BLINDS, THAT WILL BE OPERATED FROM OUTSIDE THE ROOM. THE NEW DOOR WILL HAVE AN ABUSE RESISTANT WINDOW, WITH ENCLOSED SHADES.





1-1/2"=1'-0"

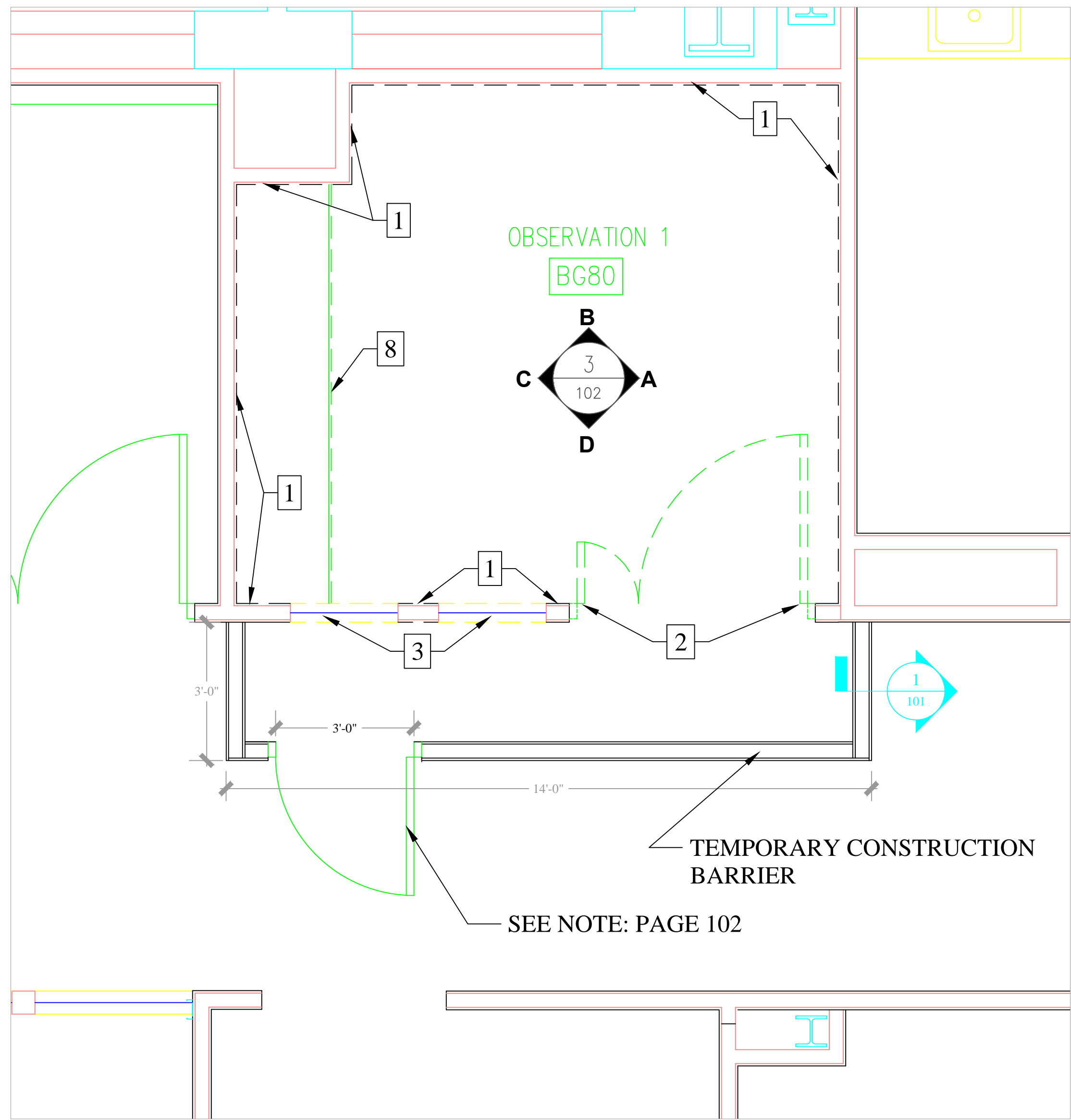


1. ALL WORK SHALL BE DONE IN ACCORDANCE WITH ALL APPLICABLE CODES, ORDINANCES AND ACCEPTED INDUSTRY STANDARD.
2. THE CONTRACTOR SHALL BE RESPONSIBLE FOR VERIFYING ALL EXISTING CONDITIONS AND ESTABLISHING THE COMPATIBILITY OF ALL NEW WORK WITH THE EXISTING CONDITIONS.
3. ALL WORK IS TO BE DONE IN OCCUPIED SPACE. GENERAL CONTRACTOR TO TAKE EVERY PRECAUTION TO ELIMINATE THE TRAVEL OF DUST AND DIRT FROM THE CONSTRUCTION AREA TO ADJACENT SPACES.
4. GENERAL CONTRACTOR SHALL PATCH ALL AREAS EFFECTED BY DEMOLITION OR REMOVAL OF EXISTING EQUIPMENT. NEW SURFACES TO BE FILLED, SANDED SMOOTH & FINISHED TO MATCH ADJACENT SURFACE OR AS SPECIFIED.
5. THE CONTRACTOR SHALL BE RESPONSIBLE FOR THE PROVISION AND CONTINUOUS MAINTENANCE OF ALL WORK FROM DAMAGE AND SHALL PROTECT THE OWNERS' PROPERTY FROM DAMAGE OR LOSS BY DUST, DIRT WATER, THEFT, FIRE OR ANY OTHER PHYSICAL DAMAGE IN CONNECTION WITH THE CONTRACT.
6. COMPLY WITH GOVERNING REGULATIONS PERTAINING TO ENVIRONMENTAL PROTECTION FOR POLLUTION CONTROL & HAZARDOUS MATERIALS.
7. DRAWINGS SHALL NOT BE SCALED AS A BASIS FOR ESTABLISHING DIMENSIONS OR OTHER INFORMATION.
8. TEMPORARY PARTITIONS SHALL BE PROPERLY SEALED (SEE TEMPORARY CONSTRUCTION DETAIL). THE SPACES UNDER CONSTRUCTION SHALL BE UNDER NEGATIVE AIR PRESSURE AT ALL TIMES. NEGATIVE AIR HEPA FILTER EXHAUST MACHINE SHALL BE USED. EXHAUST SHALL BE DISCHARGED INTO ROOM BG-81. A 12" DIAMETER SLEEVE SHALL BE USED AND INSTALLED AS CLOSE TO THE CEILING IN BG-81 AS POSSIBLE. METAL GRILLE SHALL BE USED TO COVER SLEEVE ON THE BG-81 SIDE. WHEN WORK IS COMPLETE THE BG-81 WALL SHALL BE PATCHED AND THE ENTIRE WALL SHALL BE REPAINTED, COLOR SHALL MATCH EXISTING.
9. COORDINATE THE WORK OF ALL TRADES INVOLVED IN THE CEILING WORK TO INSURE CLEARANCES FOR FIXTURES, DUCTS, PIPING, CEILING HEIGHTS INDICATED ON DRAWINGS. VERIFY IN FIELD.
10. THIS BUILDING IS PROTECTED BY A FULLY AUTOMATIC SPRINKLER SYSTEM, THE SPRINKLER CONTRACTOR IS RESPONSIBLE FOR THE MODIFICATIONS OF THE EXISTING SPRINKLER SYSTEM.
11. ALL SWITCHES, DIMMERS AND THERMOSTATS SHALL BE LOCATED VERTICALLY 48" ABOVE THE FINISHED FLOOR TO CENTER OF SWITCH AND 6" AWAY FROM HAND SET SIDE OF DOOR. MULTIPLE SWITCHES AT ONE LOCATION SHALL BE GANGED TOGETHER AND FINISHED WITH ONE COVER PLATE. ALL RECEPTACLE FACE PLATES ARE TO BE FURNISHED BY G.C. COLOR AS SPECIFIED. ALL FACE PLATES FOR DEVICES SHALL BE ABUSE RESISTANT AND SECURED WITH TAMPER PROOF SCREWS.
12. CONTRACTOR TO PROVIDE EXTRA BLOCKING AND SUPPORT AT THE COR'S REQUEST.
13. FURNISH AND INSTALL ALL FIXTURES, ASSOCIATED TRIM, FIXTURE LAMPS, AND BRACING AS REQUIRED.
14. ALL SUBMITTALS SHALL BE APPROVED BEFORE THE CONTRACTOR WILL BE ALLOWED TO START CONSTRUCTION.

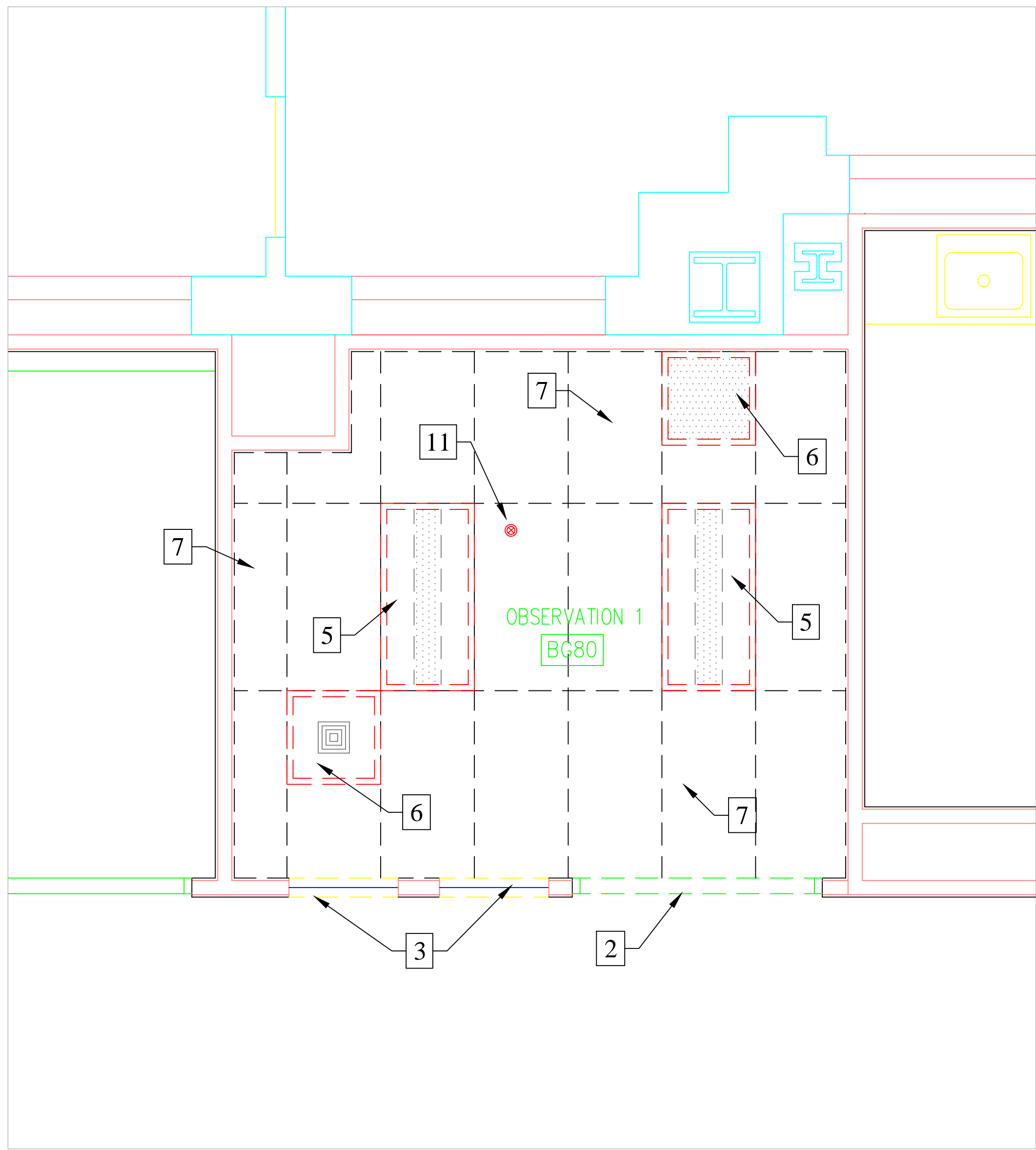
101	COVER, STATEMENT OF WORK, AND INDEX OF DRAWINGS
102	DEMOLITION FLOOR PLAN, REFLECTED CEILING, AND ELEVATIONS
103	NEW FLOOR PLAN, REFLECTED CEILING, ELEVATIONS, AND DETAILS
104	ELECTRICAL FLOOR PLAN AND ARCHITECTURAL DETAILS

		<div>(Company Logo/Information Block)</div>	<div>Drawing Title</div> <div>COVER, STATEMENT OF WORK, GENERAL NOTES, AND INDEX</div>	<div>Project Title</div> <div>CONSTRUCT PSYCH ROOM FOR EMERGENCY DEPARTMENT</div>	<div>Date</div> <div>03/18/2013</div>	<div><div>VA HEALTHCARE NETWORK</div><div>UPSTATE NEW YORK</div><div></div></div> <div><div>DEPT. of VETERANS AFFAIRS</div><div></div></div>		
			<div>Approved Facility Manager</div> <div>CHRIS FRANI</div>	<div>Building Number</div> <div>1</div>	<div>Checked</div> <div>LC</div>		<div>Drawn</div> <div>JAJ</div>	<div>Project No.</div> <div>52BA7-13-735</div>
				<div>Location</div> <div>VAMC SYRACUSE, NY</div>			<div>DRAWING NO.</div> <div>101</div>	
							<div>Dwg.</div> <div>1</div> <div>Of</div> <div>4</div>	
Revisions	Date							





1 DEMOLITION FLOOR PLAN  
1/2"=1'-0"



2 REFLECTED CEILING DEMOLITION PLAN  
1/2"=1'-0"

#### SPECIFIC DEMOLITION NOTES

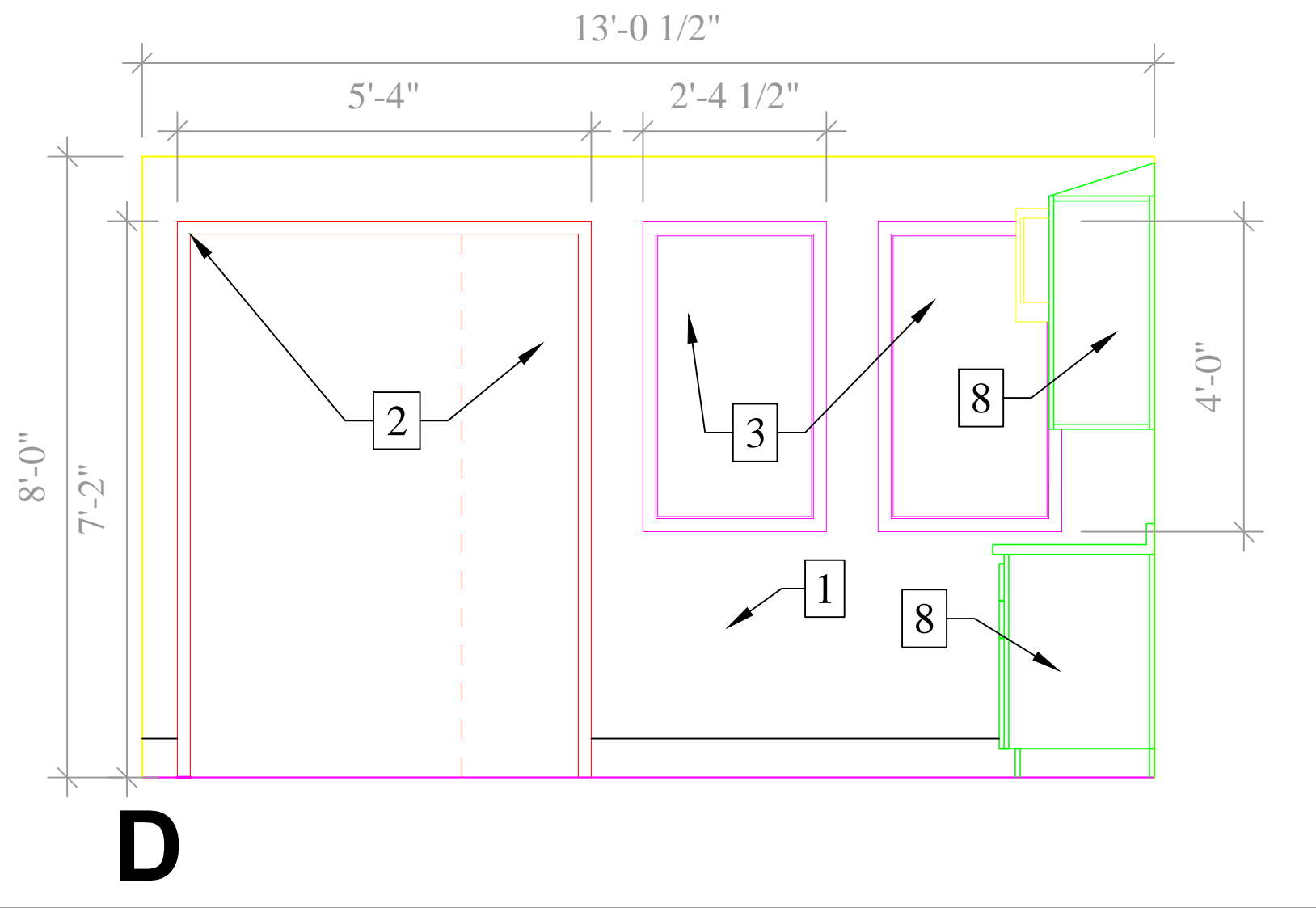
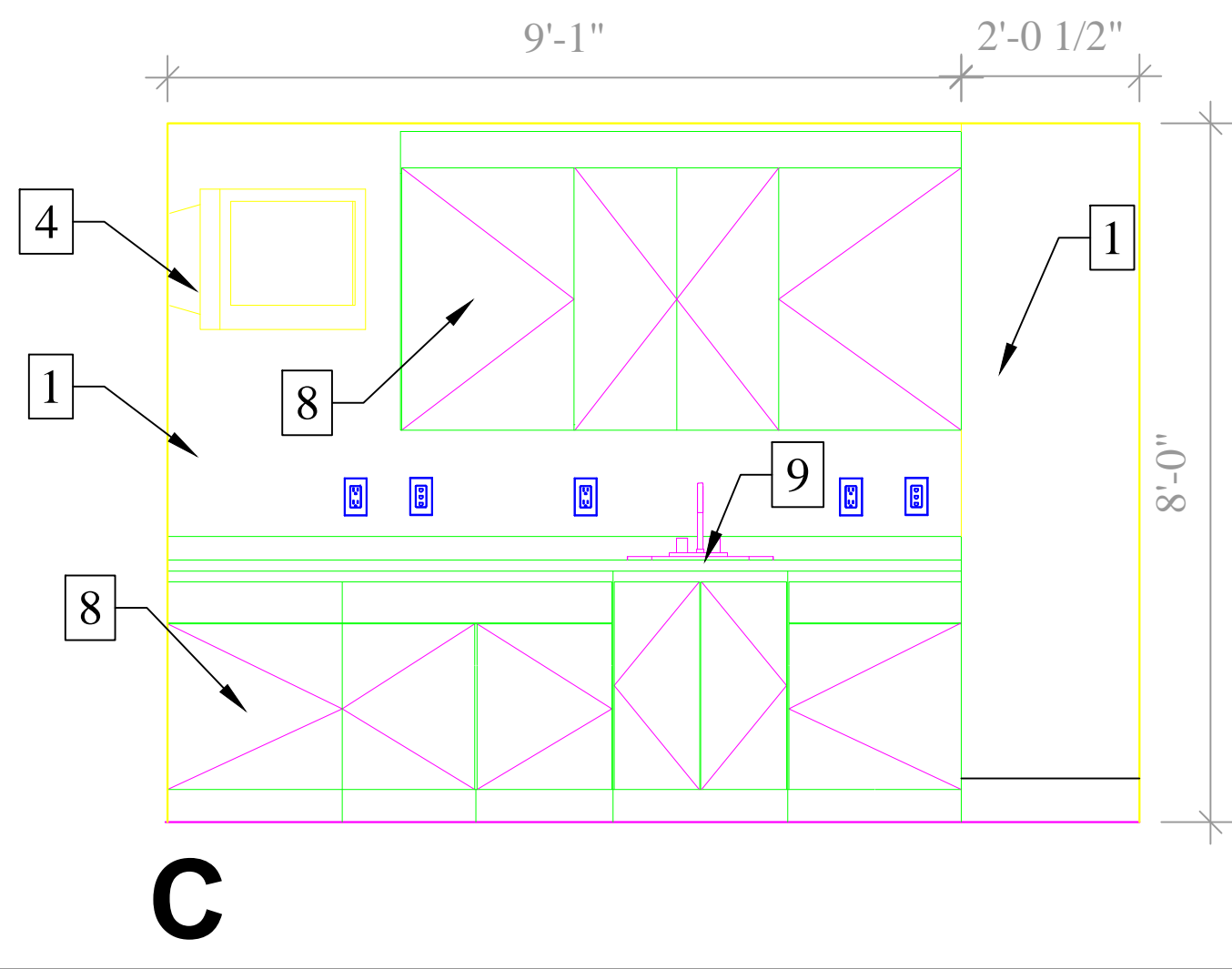
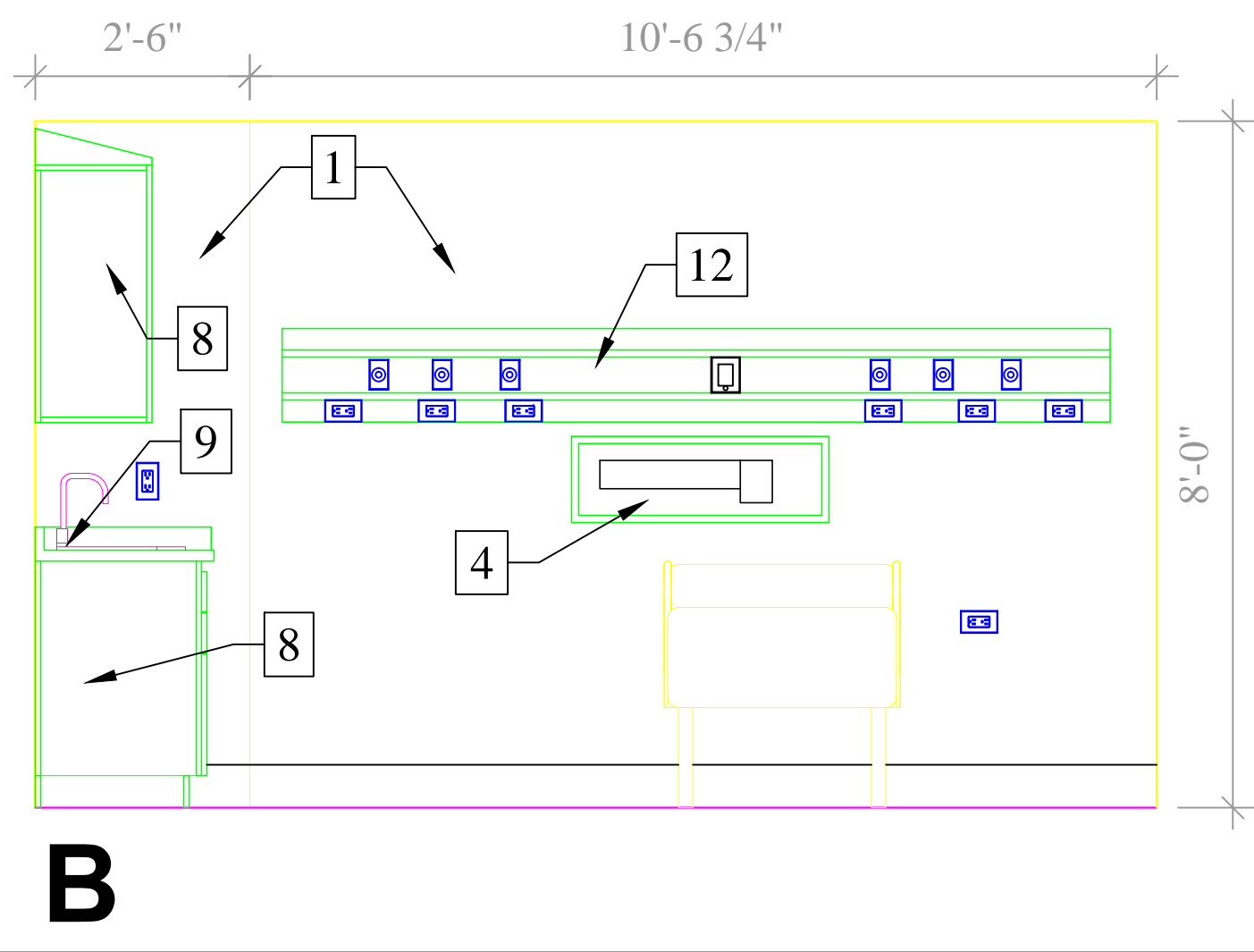
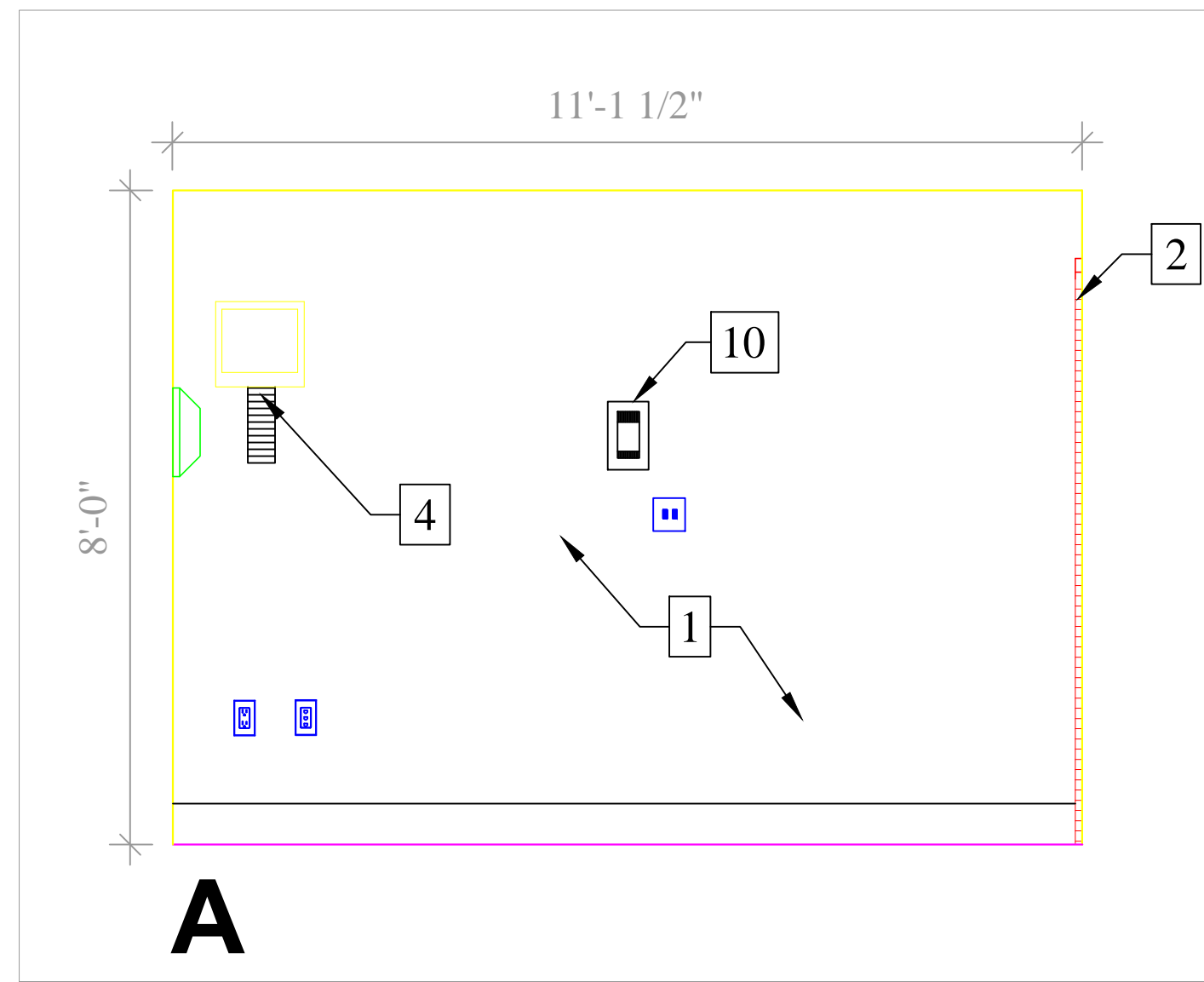
- 1 REMOVE EXISTING GYPSUM WALLBOARD TO THE EXTENT SHOWN IN ITS ENTIRETY. PATCH AND PREPARE THE DAMAGED FLOOR AND DECK ABOVE FOR NEW FINISHES.
- 2 REMOVE EXISTING DOOR COMPLETELY, INCLUDING FRAME, HARDWARE, & ANCHORS. SALVAGE LOCK CORES AND RETURN TO OWNER. REPAIR AND ADD ANY ADDITIONAL FRAMING FOR NEW FRAMES.
- 3 REMOVE EXISTING WINDOW COMPLETELY. INCLUDING FRAME, ALL RELATED HARDWARE, WOOD, METAL, GLASS & SHADES/DRAPE. REPAIR AND ADD ANY ADDITIONAL FRAMING FOR NEW FRAMES.
- 4 REMOVE ALL WALL & CEILING MOUNTED FIXTURES, EQUIPMENT, AND ACCESSORIES. PREPARE FOR NEW FINISHES.
- 5 REMOVE EXISTING RECESSED FLUORESCENT 2'x4' LIGHT FIXTURES COMPLETELY.
- 6 REMOVE EXISTING RETURN AND SUPPLY DIFFUSERS. PREPARE FOR NEW.
- 7 REMOVE CEILINGS WHICH ARE SHOWN DASHED COMPLETELY, INCLUDING GRID, PANELS, HANGERS, ECT.
- 8 REMOVE EXISTING CASEWORK AND BASE COMPLETELY. PREPARE FOR NEW FINISHES.
- 9 REMOVE EXISTING LAVATORY AND FACET. ADJUST PLUMBING AS NEEDED TO ENSURE NEW CASEWORK AND LAVATORY ALIGN.
- 10 DEVICE SHALL REMAIN.
- 11 REMOVE FIRE SPRINKLER HEAD & ADJUST WATER LINES TO PREPARE FOR NEW CEILING HEIGHT.
- 12 EXISTING HEADWALL TO REMAIN.

#### NOTE:

METAL KNOCK DOWN FRAME 3'-0"x7'-0" WITH A SOLID CORE WOOD DOOR. LOCKSET THAT REMAINS LOCKED FROM THE OUTSIDE. ROOM CAN ONLY BE ACCESSED BY USING V.A. SUPPLIED CONSTRUCTION KEY.

#### GENERAL DEMOLITION NOTES

1. THE CONTRACTOR SHALL VERIFY ALL CONDITIONS AND DIMENSIONS WITHIN THE CONTRACT LIMITS AND NOTIFY THE COR IMMEDIATELY IN WRITING OF ANY DEVIATION FROM CONTRACT DOCUMENTS NECESSITATED BY FIELD CONDITIONS OR ITEMS NOT COVERED.
2. PROVIDE TEMPORARY PARTITIONS/DUST PROTECTION (RATED AND/OR NON-RATED) AS REQUIRED BY ICRA. REVIEW LOCATIONS OF TEMPORARY PARTITIONS/DUST PROTECTION WITH COR PRIOR TO START OF WORK.
3. HAZARDOUS MATERIAL NOTE: CONTRACTOR SHALL STOP WORK AND INFORM COR IMMEDIATELY IN WRITING OF ANY HAZARDOUS MATERIAL ENCOUNTERED OR THOUGHT TO BE HAZARDOUS. THE COR, AFTER RECEIVING WRITTEN NOTICE, SHALL INSTRUCT CONTRACTOR HOW TO PROCEED.
4. DASHED LINES ON DEMOLITION PLANS REPRESENT WALLS, DOORS, WINDOWS, CEILINGS, CASEWORK, ECT. TO BE REMOVED.
5. FOR ALL SURFACES SCHEDULED TO REMAIN, PATCH, MATCH SURFACES DISTURBED BY DEMOLITION OR REMOVAL OF EQUIPMENT OR UTILITIES. PROVIDE PATCHING TO MATCH ADJACENT WORK IN FINISH, STRUCTURAL QUALITIES, COURSING OF MASONRY, AND OTHER CHARACTERISTICS. PATCH SURFACES TO COMPLY WITH FIRE RATINGS, SMOKE-TIGHT RATINGS, ACOUSTICAL CRITERIA AND OTHER PERFORMANCE CRITERIA INDICATED.
6. ALL WORK SHALL BE DONE IN PROTECTED SPACE. NO DUST OR DIRT SHALL TRAVEL FROM CONSTRUCTION AREA TO ADJACENT AREAS. ICRA SHALL BE ERECTED PRIOR TO WORK.
7. CONTRACTOR SHALL REVIEW ALL ITEMS TO BE DEMOLISHED WITH COR TO IDENTIFY ANY ITEMS TO BE SALVAGED PRIOR TO START OF DEMOLITION.
8. ALL MATERIALS AND ITEMS REMOVED BY CONTRACTOR, UNLESS OTHERWISE NOTED, BECOME HIS PROPERTY AND ARE TO BE REMOVED FROM THE SITE IN CLOSED CONTAINERS ON A DAILY BASIS OR IN A MANNER ACCEPTABLE TO THE OWNER.
9. PATCH OR REBUILD ANY AREAS TO REMAIN THAT HAVE BEEN DISTURBED BY DEMOLITION.
10. CONTRACTOR SHALL PREPARE FLOOR SLABS SO FINISH FLOORS ARE FLUSH WITH EACH OTHER AND PREPARED TO ACCEPT NEW FINISH.
11. CONTACTOR SHALL PREPARE FLOOR SLABS SO FINISH FLOORS ARE FLUSH WITH EACH OTHER AND PREPARED TO ACCEPT NEW FINISH.



3 DEMOLITION ELEVATIONS  
1/2"=1'-0"

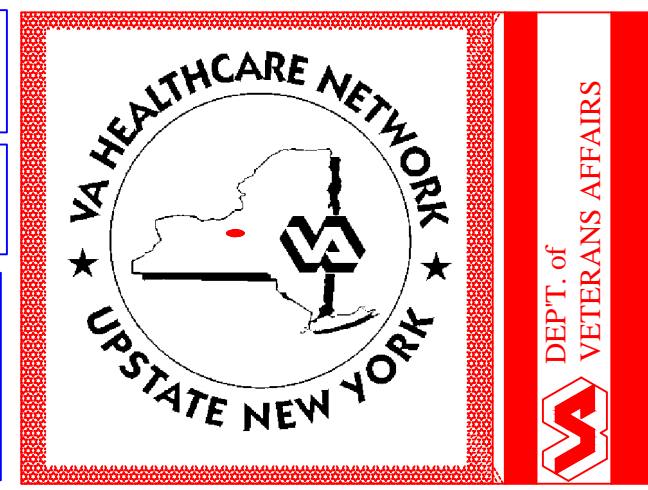
Revisions	Date


(Company Logo/Information Block)

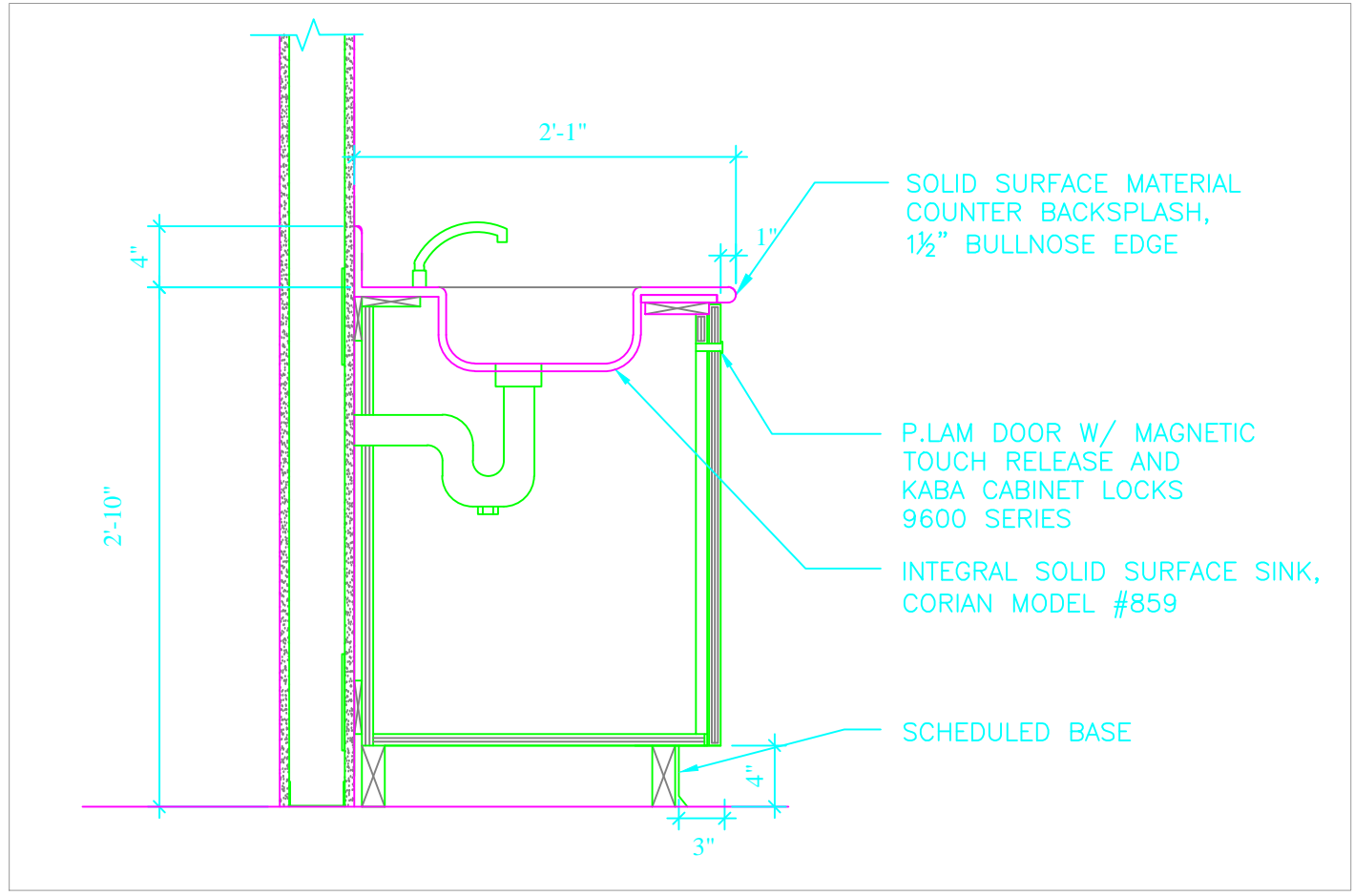
Drawing Title DEMOLITION FLOOR PLAN, REFLECTED CEILING, AND ELEVATIONS
Approved: Facility Manager CHRIS FRANI

Project Title CONSTRUCT PSYCH ROOM FOR EMERGENCY DEPARTMENT
Building Number 1
Location VAMC SYRACUSE, NY

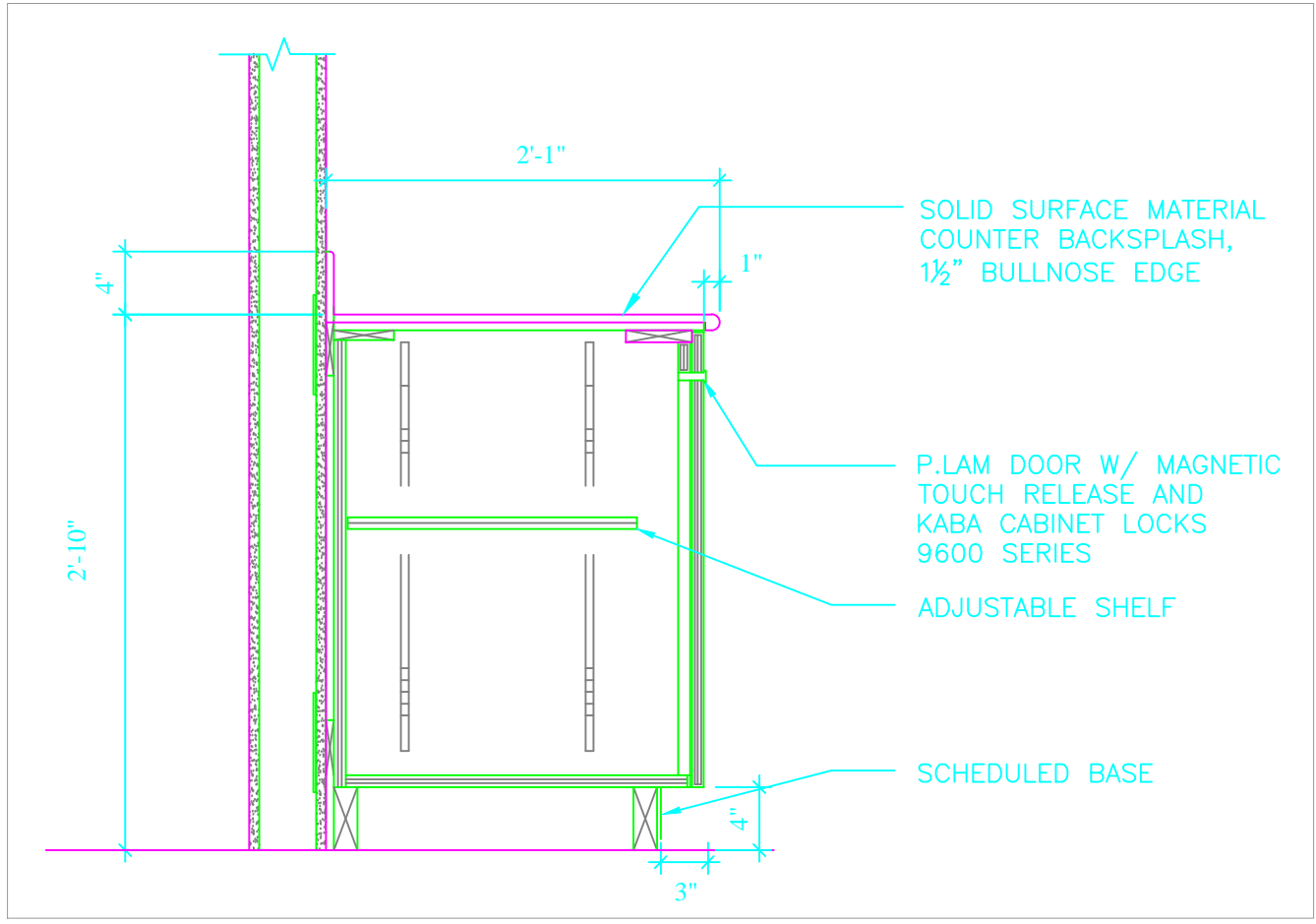
Date 03/18/2013
Project No. 528A7-13-735
DRAWING NO. 102
Dwg 2 Of 4



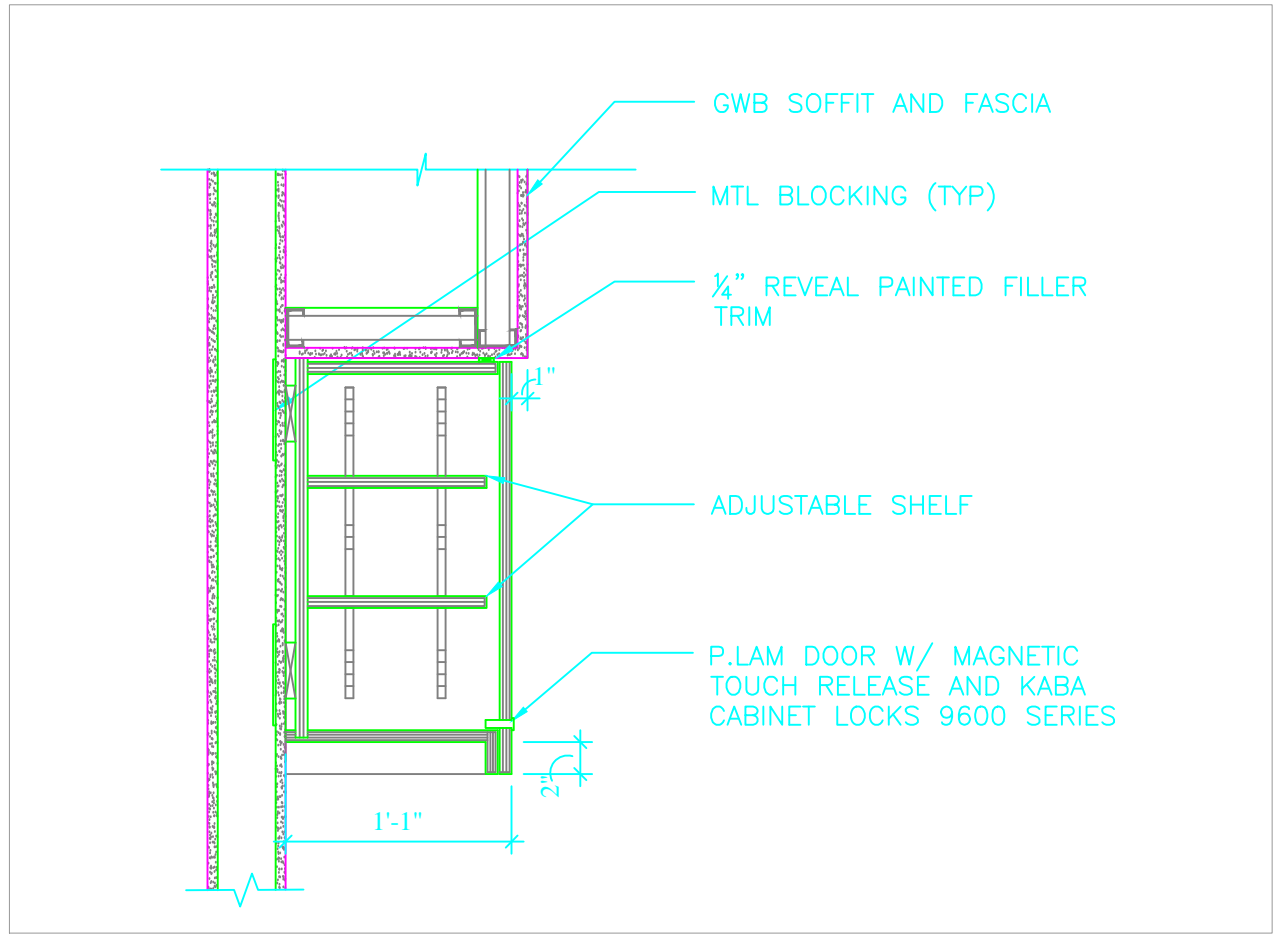




4 SINK CABINET SECTION  
1"=1'-0"



5 DOOR CABINET SECTION  
1"=1'-0"



6 OVERHEAD CABINET SECTION  
1"=1'-0"

GENERAL CASEWORK NOTES:

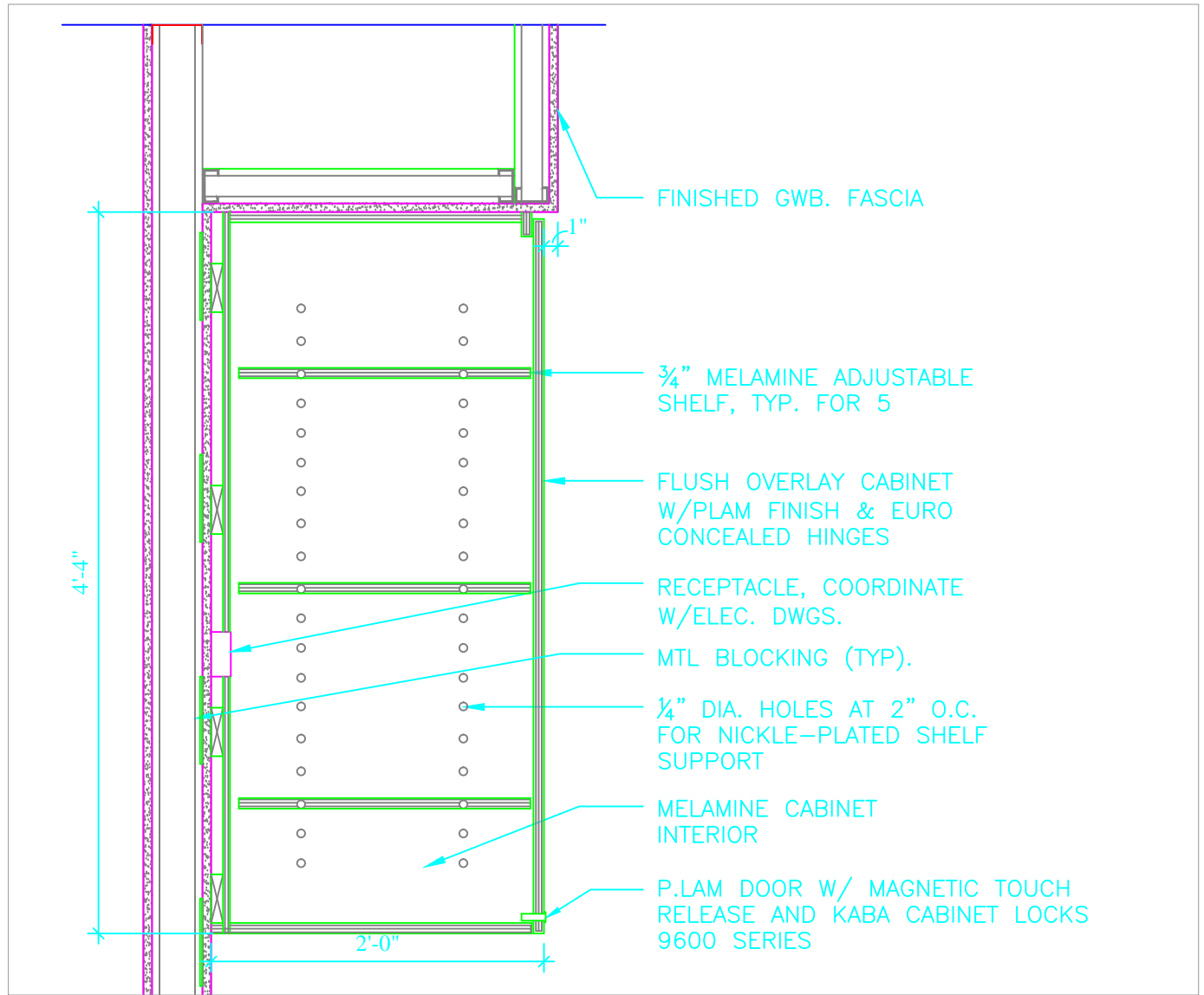
- ALL VERTICAL PLASTIC LAMINATE (CASEWORK FRONTS AND EXPOSED INTERIOR) TO BE PLASTIC LAMINATE TO MATCH EXISTING.
- ALL COUNTER TOPS, SIDE AND BACKSLASH TO BE SOLID SURFACE TO MATCH EXISTING.
- PROVIDE 2MM PVC "EDGE BANDING AROUND ALL DOORS AND DRAWERS FRONTS TO MATCH FACE COLOR AND PATTERN.
- ALL CASEWORK DIMENSIONS TO BE FIELD VERIFIED.
- ALL EXPOSED CABINET SURFACES TO BE PLAM U.N.O ALL CONCEALED SURFACES TO BE WHITE MELAMINE.
- RAKKS BRACKETS TO BE PER MANUFACTURER'S RECOMMENDED SIZE FOR COUNTER DEPTH. COLOR: CLEAR ANODIZED ALUMINUM.
- ALL CASEWORK DOORS SHALL HAVE MAGNETIC TOUCH RELEASE WITH KABA 9600 SERIES LOCK, OR APPROVED EQUAL.

NOTES:

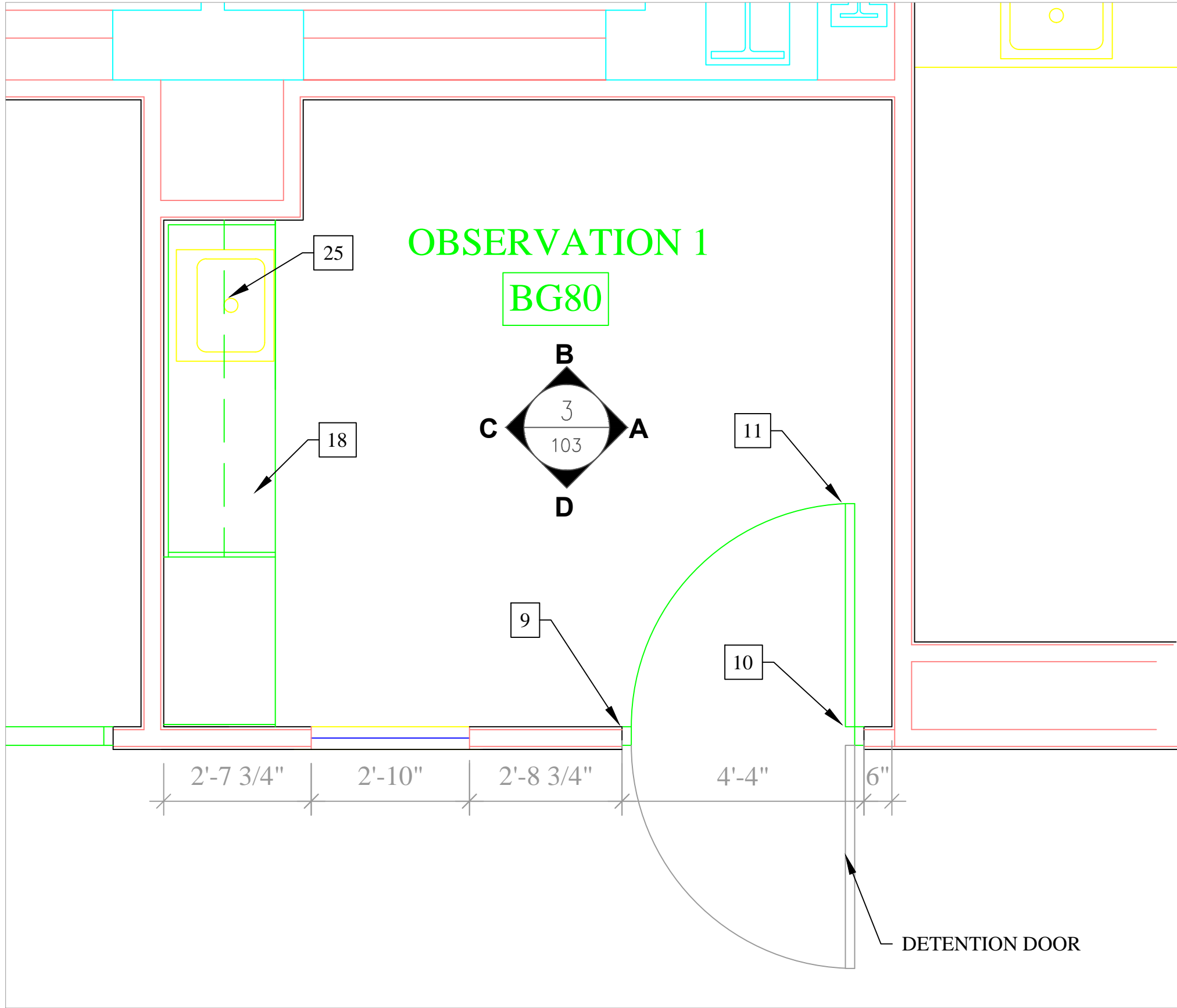
- WALLS, FRAMES, AND DOORS SHALL BE PAINTED. COLORS SHALL BE SELECTED FROM PAINT SAMPLES SUBMITTED BY THE CONTRACTOR.
- COLORS FOR CASEWORK, SOLID SURFACE COUNTERTOPS, AND BASE SHALL BE SELECTED BY SAMPLES SUBMITTED BY THE CONTRACTOR.
- ALL WALL COVERS WILL BE POLISHED STAINLESS STEEL, SECURED WITH TAMPER PROOF SCREWS. LIGHT SWITCH, COAXIAL, RECEPTACLES, ECT.

SPECIFIC CONSTRUCTION NOTES:

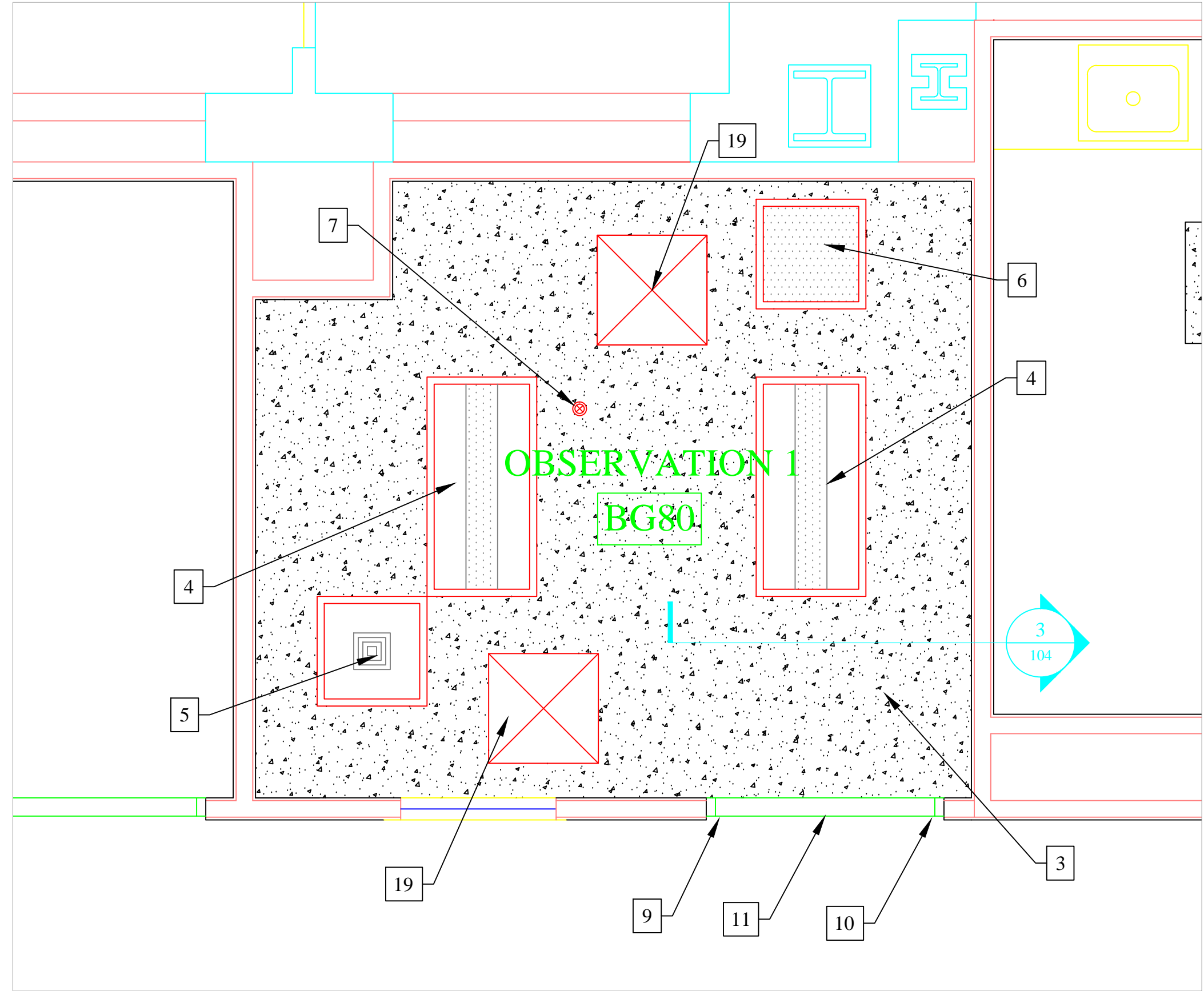
- LOCKSETS FOR CASEWORK WILL BE THE KABA CABINET LOCKS 9600 SERIES OR APPROVED EQUAL.
- INSIGHT DIGITAL SOLUTIONS LCD WITH DIMENSIONS TO ENCLOSE AN LCD (15 1/2"H x 21"W x 3 1/2"D). USE INSIGHT DIGITAL SOLUTIONS LCD ENCLOSURE OR APPROVED EQUAL.
- CEILING AND WALLS WILL BE FRAMED 16 O.C. AND CONSTRUCTED OF ABUSE RESISTANT GWB.
- NEW 2"x4" 3-TUBE LIGHT FIXTURE.
- SECURITY SUPPLY AIR DIFFUSER WILL BE PRICE INDUSTRIES MODEL NO. SDPE OR APPROVED EQUAL. SIZE TO BE DETERMINED BY EXISTING SUPPLY DUCT SIZE.
- SECURITY RETURN AIR GRILLE WILL BE PRICE INDUSTRIES MODEL NO. SDPR OR APPROVED EQUAL. SIZE TO BE DETERMINED BY EXISTING RETURN DUCT SIZE.
- RELIABLE QUICK RESPONSE COMMERCIAL SPRINKLER HEADS MODEL XL (SIN R4514) OR APPROVED EQUAL. ADJUST SPRINKLER PIPING SO NEW HEAD FITS NEW GWB CEILING.
- USE VISTAMATIC VISION PANELS. MODEL VS1 SINGLE SIDE HANDLE WITH PYROSEC GLAZING OR APPROVED EQUAL. WINDOW DIMENSIONS WILL BE 23"x37".
- MCKINNEY COMBINATION STRIKE AND STOP. MODEL NUMBER CSS-9 CENTER HUNG OR APPROVED EQUAL.
- RIXON CENTER HUNG PIVOT SET MODEL NUMBER 370 OR APPROVED EQUAL.
- METAL SECURITY DOOR AND FRAME. DOOR SHALL HAVE RADIUS ON PIVOT EDGE TO ALLOW FOR FRAME CLEARANCE. SEE SPECIFICATIONS FOR DETAILS OR APPROVED EQUAL.
- REPLACE NURSE-CALL DEVICE WITH MANUFACTURES RECESSED MODEL.
- HOSPITAL GRADE TAMPER RESISTANT DUPLEX RECEPTACLE 20A, 125V, NEMA 5-20R. PASS AND SEYMOUR MODEL NUMBER TRIG8300I (IVORY) OR APPROVED EQUAL.
- HOSPITAL GRADE TAMPER RESISTANT DUPLEX RECEPTACLE 20A, 125V, NEMA 5-20R. PASS AND SEYMOUR MODEL NUMBER TRIG8300RED (RED) OR APPROVED EQUAL.
- HOSPITAL GRADE TAMPER RESISTANT DUPLEX GFCI RECEPTACLE 20A, 125V, NEMA 5-20R. PASS AND SEYMOUR MODEL NUMBER 2095HGTRI (IVORY) OR APPROVED EQUAL.
- SUICIDE PREVENTION FAUCET CCS-N301 OR APPROVED EQUAL. CAPE COD SYSTEMS: 25 CRESTVIEW DR. PO BOX 839. PHONE: 888-227-8555.
- STANLEY MORTISE LOCK. MODEL NUMBER SPSL-ML-W4-16F OR APPROVED EQUAL.
- SOLID SURFACE TOP W/ INTEGRAL SINK. SEE NOTE 2, ON PAGE 103.
- INSTALL CEILING ACCESS PANELS 24"x24" AS DIRECTED BY THE COR. LOCATION SHALL BE DETERMINED IN THE FIELD.
- DATA OPENINGS WILL BE STAINLESS STEEL WALL PLATES WITH TAMPER PROOF SCREWS. CONTRACTOR SHALL GET APPROVAL FROM COR UPON RECEIVING SUBMITTAL.
- TWO GANG TOGGLE SWITCH OPENING WALL PLATE. PASS AND SEYMOUR MODEL NUMBER 302S/S SS1 OR APPROVED EQUAL.
- ONE GANG DUPLEX RECEPTACLE OPENING WALL PLATE. MODEL NUMBER 302S/S (IVORY) OR APPROVED EQUAL.
- ONE GANG DUPLEX RECEPTACLE OPENING WALL PLATE. PASS AND SEYMOUR MODEL NUMBER 302S/S SS8 (RED) OR APPROVED EQUAL.
- ONE GANG CABLE OUTLET WALL PLATE. PASS AND SEYMOUR MODEL 302S/S SS11 OR APPROVED EQUAL.
- STAINLESS STEEL SINK 19"W x 16"L x 7"D. COMPATIBLE WITH CASEWORK AND FAUCET.



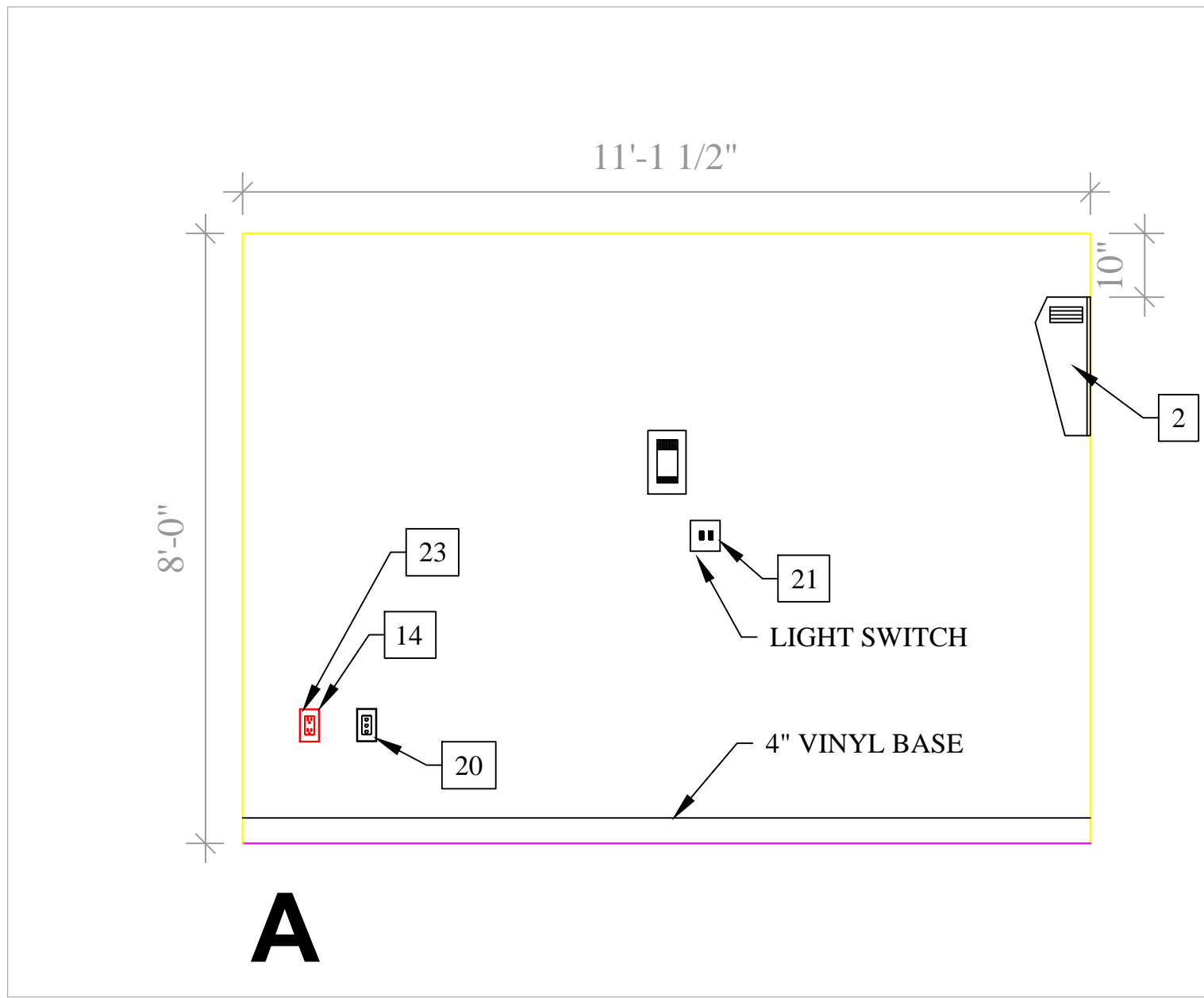
7 COMPUTER CABINET SECTION  
1"=1'-0"



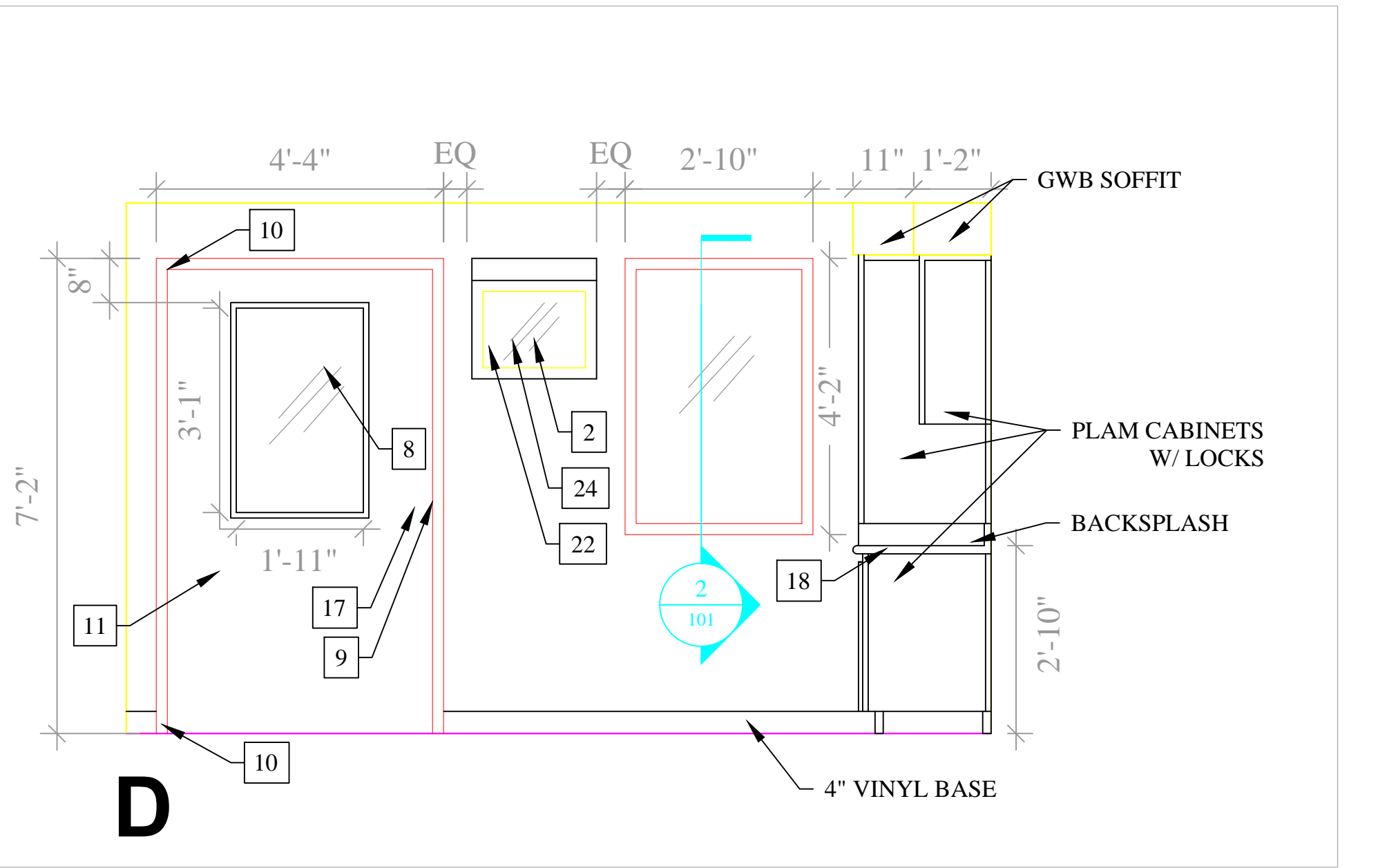
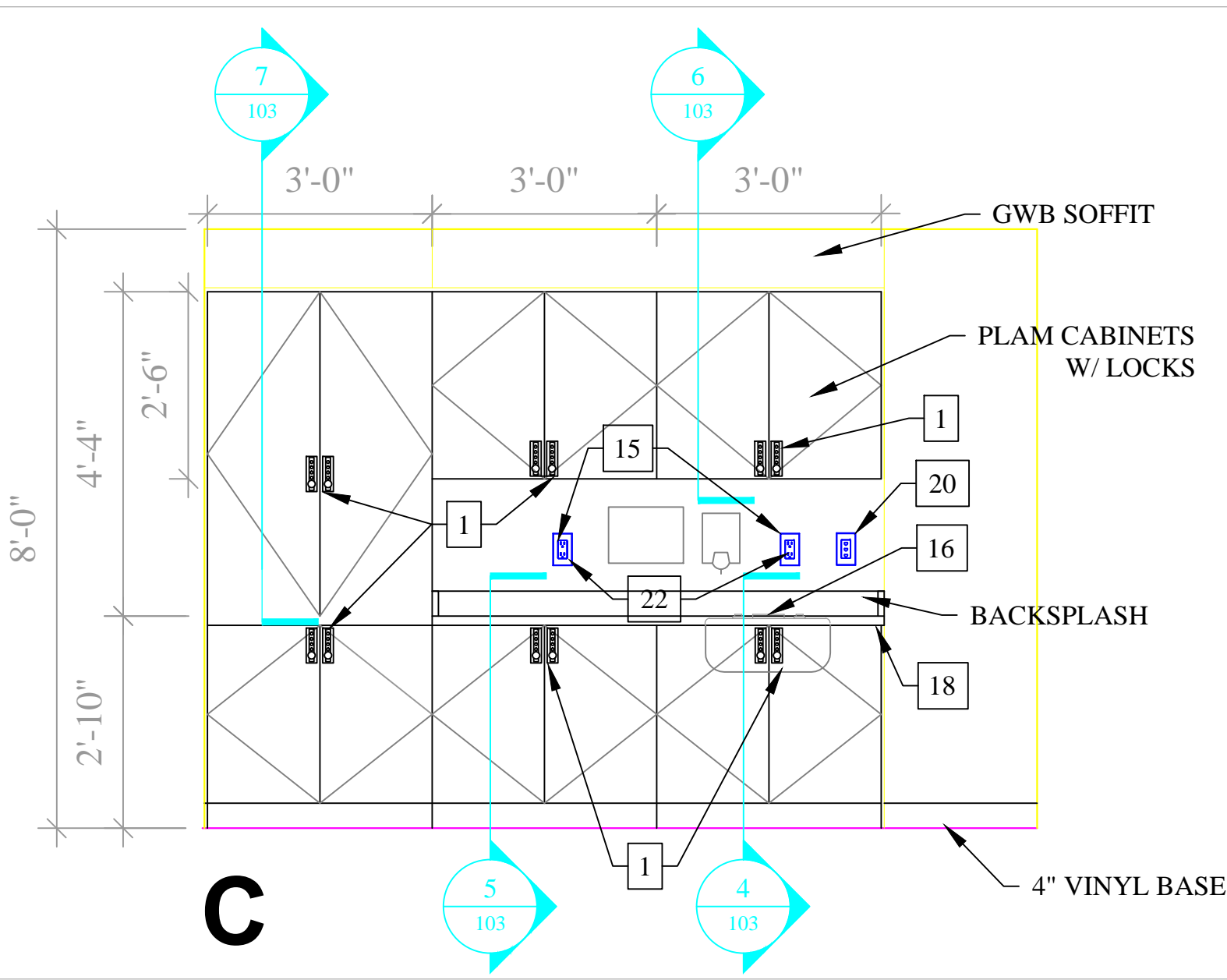
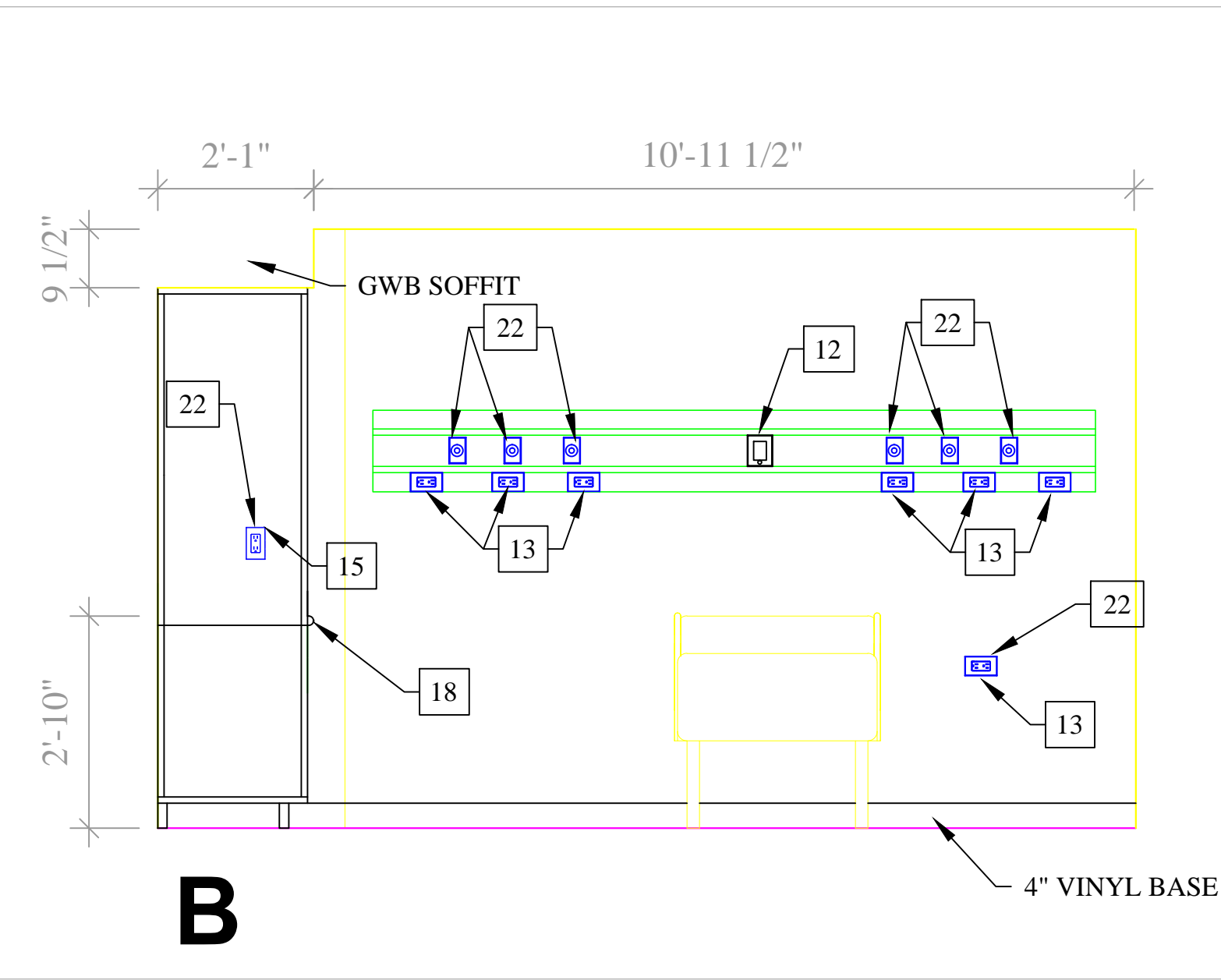
1 NEW FLOOR PLAN PARTIAL  
1/2"=1'-0"



2 NEW REFLECTED CEILING PLAN  
1/2"=1'-0"



3 NEW ELEVATIONS  
1/2"=1'-0"



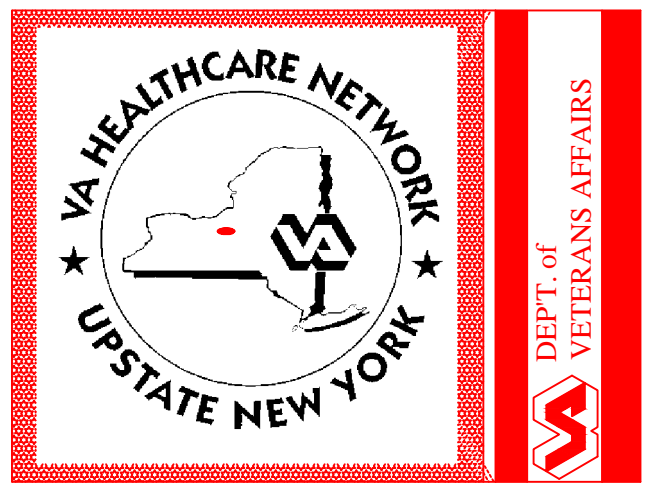
Revisions	Date


(Company Logo/Information Block)

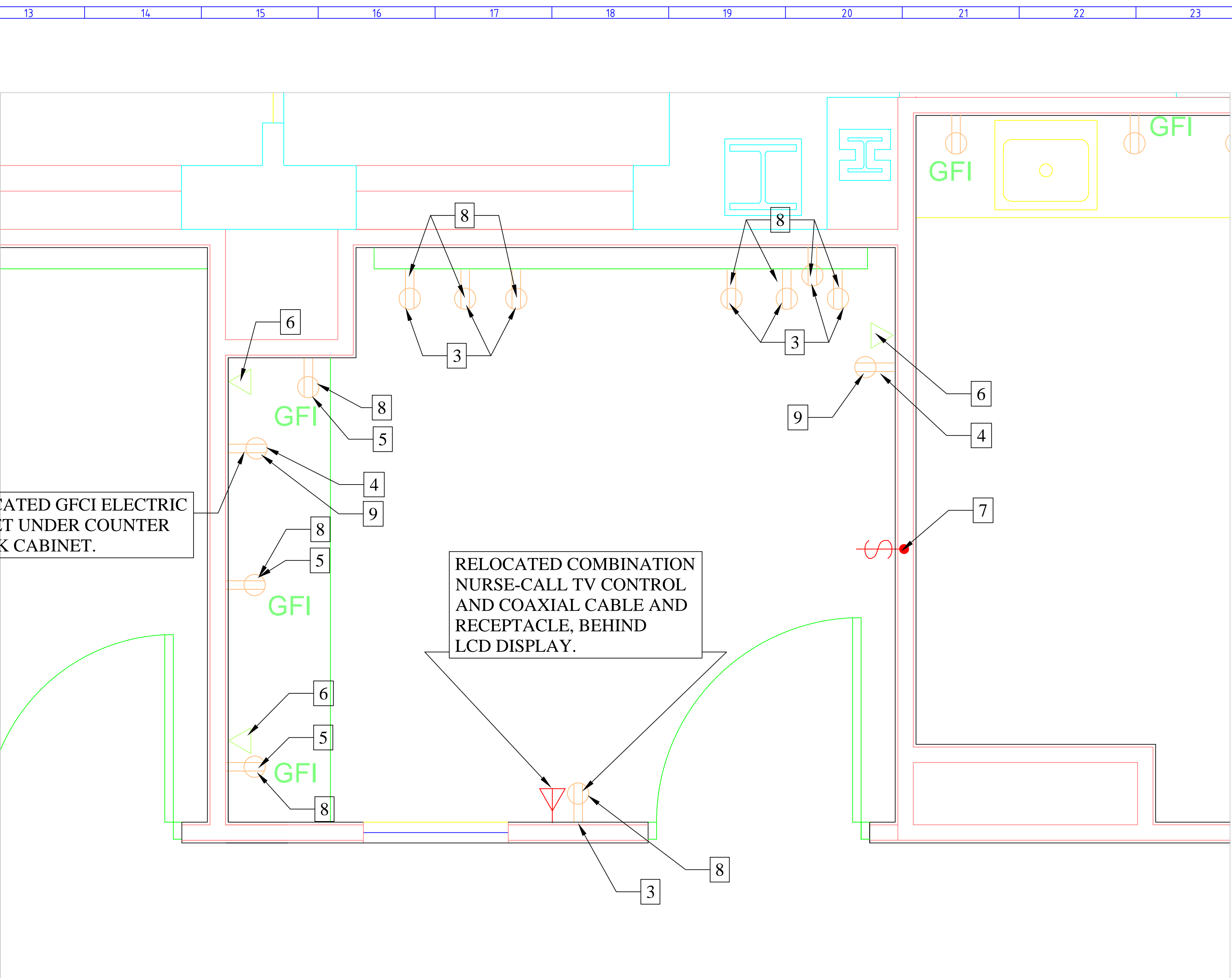
Drawing Title
NEW FLOOR PLAN, REFLECTED CEILING, ELEVATIONS, AND DETAILS
Approved: Facility Manager
CHRIS FRANI

Project Title
CONSTRUCT PSYCH ROOM FOR EMERGENCY DEPARTMENT
Building Number
1
Location
VAMC SYRACUSE, NY

Date
03/18/2013
Project No.
528A7-13-735
DRAWING NO.
103
Dwg. 3 Of 4







2 ELECTRICAL NEW FLOOR PLAN  
3/4"=1'-0"



- 1 RELOCATE EXISTING ELECTRIC OUTLET RECEPTACLE AND COMBINATION NURSE-CALL TV CONTROL, AND COAXIAL CONNECTION. NEW LOCATION WILL BE LOCATED BEHIND LCD ENCLOSEURE. USE MANUFACTURES SPECIFICATIONS FOR EXACT LOCATION.
- 2 RELOCATE EXISTING GFI RECEPTACLE AND DATA OUTLET. COORDINATE WITH CASEWORK INSTALLATION TO ENSURE CONNECTIONS HAVE ACCESS TO COMPUTER.
- 3 HOSPITAL GRADE TAMPER RESISTANT DUPLEX RECEPTACLE 20A, 125V, NEMA 5-20R. PASS AND SEYMOUR MODEL NUMBER TRIG8300I (IVORY) OR APPROVED EQUAL.
- 4 HOSPITAL GRADE TAMPER RESISTANT DUPLEX RECEPTACLE 20A, 125V, NEMA 5-20R. PASS AND SEYMOUR MODEL NUMBER TRIG8300RED (RED) OR APPROVED EQUAL.
- 5 HOSPITAL GRADE TAMPER RESISTANT GFCI RECEPTACLE 20A, 125V, NEMA 5-20R. PASS AND SEYMOUR MODEL NUMBER 2095HGTRI (IVORY) OR APPROVED EQUAL..
- 6 DATA OUTLETS WILL BE STAINLESS STEEL WALL PLATES WITH TAMPER PROOF SCREWS..
- 7 TWO GANG TOGGLE SWITCH OPENING WALL PLATE. PASS AND SEYMOUR MODEL NUMBER 302S/SS1 OR APPROVED EQUAL.
- 8 ONE GANG DUPLEX RECEPTACLE OPENING WALL PLATE. MODEL NUMBER 302S/ (IVORY) OR APPROVED EQUAL.
- 9 ONE GANG DUPLEX RECEPTACLE OPENING WALL PLATE. PASS AND SEYMOUR MODEL NUMBER 302S/SS8 (RED) OR APPROVED EQUAL.

## GENERAL ELECTRICAL NOTES

1. ALL ELECTRICAL/DATA FACE PLATES WILL BE TAMPER RESISTANT, SECURED WITH TAMPER PROOF SCREWS.
2. ALL ELECTRICAL/DATA OUTLETS AND CONDUIT SHALL BE RECESSED.
3. PROVIDE ADHESIVE LABEL WITH PANEL AND CIRCUIT NUMBER ON ALL RECEPTACLES AND SWITCHES. HAND WRITTEN LABELS WILL NOT BE ACCEPTED. GET APPROVAL FROM COR ON TYPES OF LABEL PRIOR TO INSTALLATION.
4. CONTRACTOR SHALL FIELD VERIFY ALL CONDITIONS BEFORE STARTING WORK. IF ONLY A PORTION OF AN EXISTING CIRCUIT IS BEING REMOVED FOR DEMOLITION CONTINUITY SHALL BE MAINTAINED TO THE REST OF THE REMAINING CIRCUIT.

	Drawing Title
	ELECTRICAL FLOOR PLAN AND ARCHITECTURAL DETAILS
	Approved: Facility Manager CHRIS FRANI

Project Title		
CONSTRUCT PSYCH ROOM FOR EMERGENCY DEPARTMENT		
Building Number	Checked	Drawn
1	LC	JAJ
Location		
VAMC SYRACUSE, NY		

Date  
03/18/2013

Project No.  
528A7-13-735

DRAWING NO.  
**104**

Dwg. 4 Of 4

