

REVISIONS

DATE

CSH60A

C.W. MOORE PLAZA
 250 S. 5TH ST. BOISE ID 83702
 (208) 343-4635 FAX (208) 343-1888
<http://www.cshpa.com>

KYLE D. HEMLY, LANDSCAPE ARCHITECT

C.W. MOORE PLAZA

BOISE, IDAHO

PHONE 208-343-4635 FAX 208-343-1888

THESE DRAWINGS AND SPECIFICATIONS AS INSTRUMENTS OF SERVICE ARE THE PROPERTY OF CSH60A. THEY ARE TO BE USED ONLY FOR THE PROJECT AND SITE SPECIFICALLY IDENTIFIED HEREIN. NO PART OF THESE DRAWINGS OR SPECIFICATIONS SHALL BE REPRODUCED, COPIED, OR TRANSMITTED IN ANY FORM OR BY ANY MEANS, ELECTRONIC OR MECHANICAL, INCLUDING PHOTOCOPYING, RECORDING, OR BY ANY INFORMATION STORAGE AND RETRIEVAL SYSTEM, WITHOUT THE WRITTEN PERMISSION OF CSH60A OR ITS APPLICATEE. Copyright 2011

STAMP



DRAWING TITLE

LANDSCAPE &
 IRRIGATION
 DETAILS

APPROVED: CHIEF OF FACILITY MANAGEMENT SERVICE

APPROVED: MEDICAL CENTER DIRECTOR

PROJECT TITLE

BOISE VAMC
 NEW EXTENDED CARE UNIT
 SITE DEVELOPMENT

BUILDING NUMBER

121 & 122

LOCATION

VAMC BOISE, IDAHO

DATE

12/01/2011

PROJECT NO.

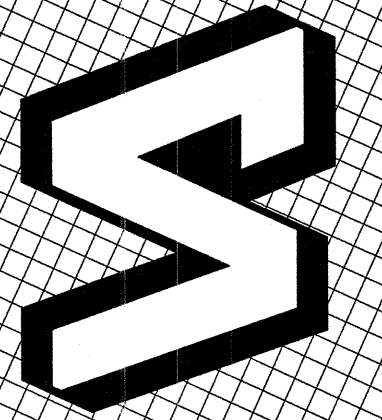
531-319

DRAWING NO.

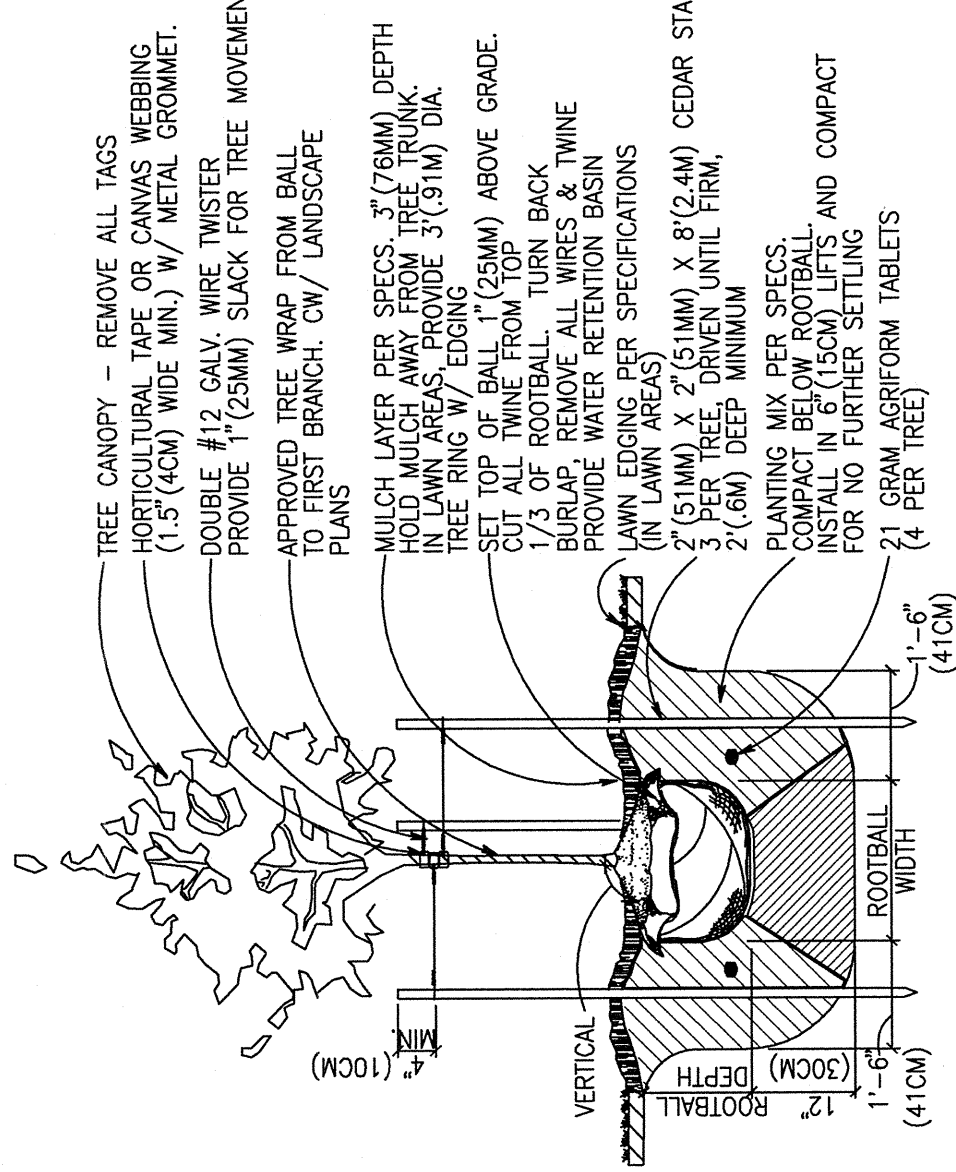
SDL3.1

DWG

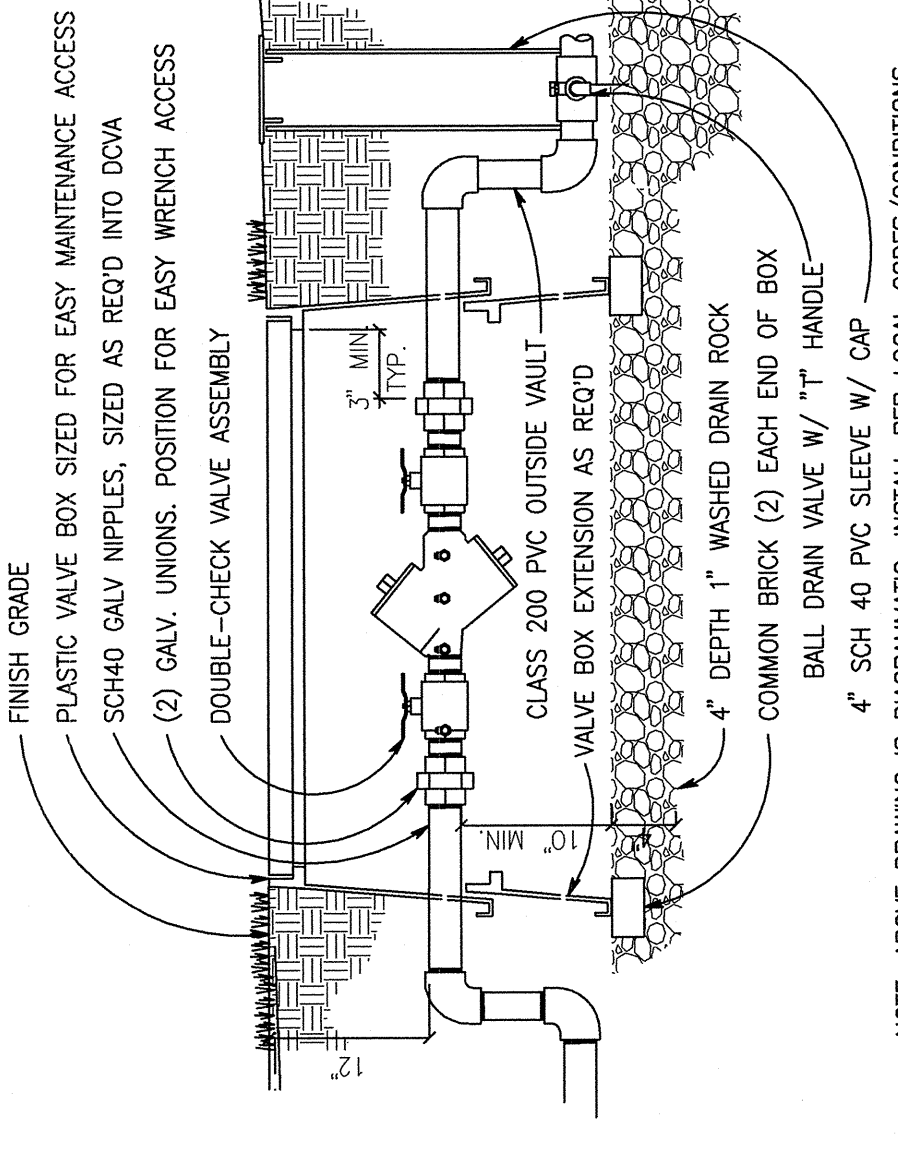
10 OF 12



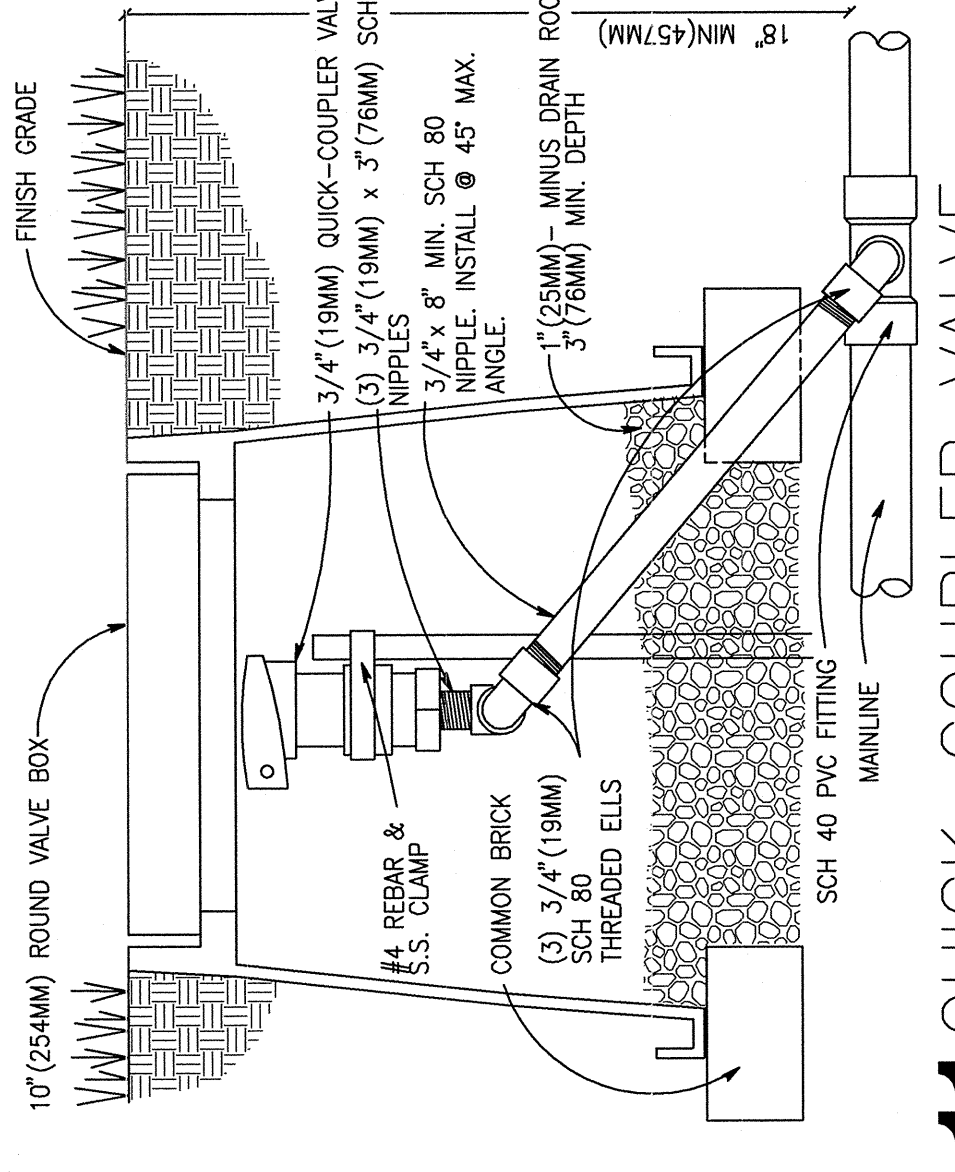
DEPARTMENT OF VETERANS AFFAIRS



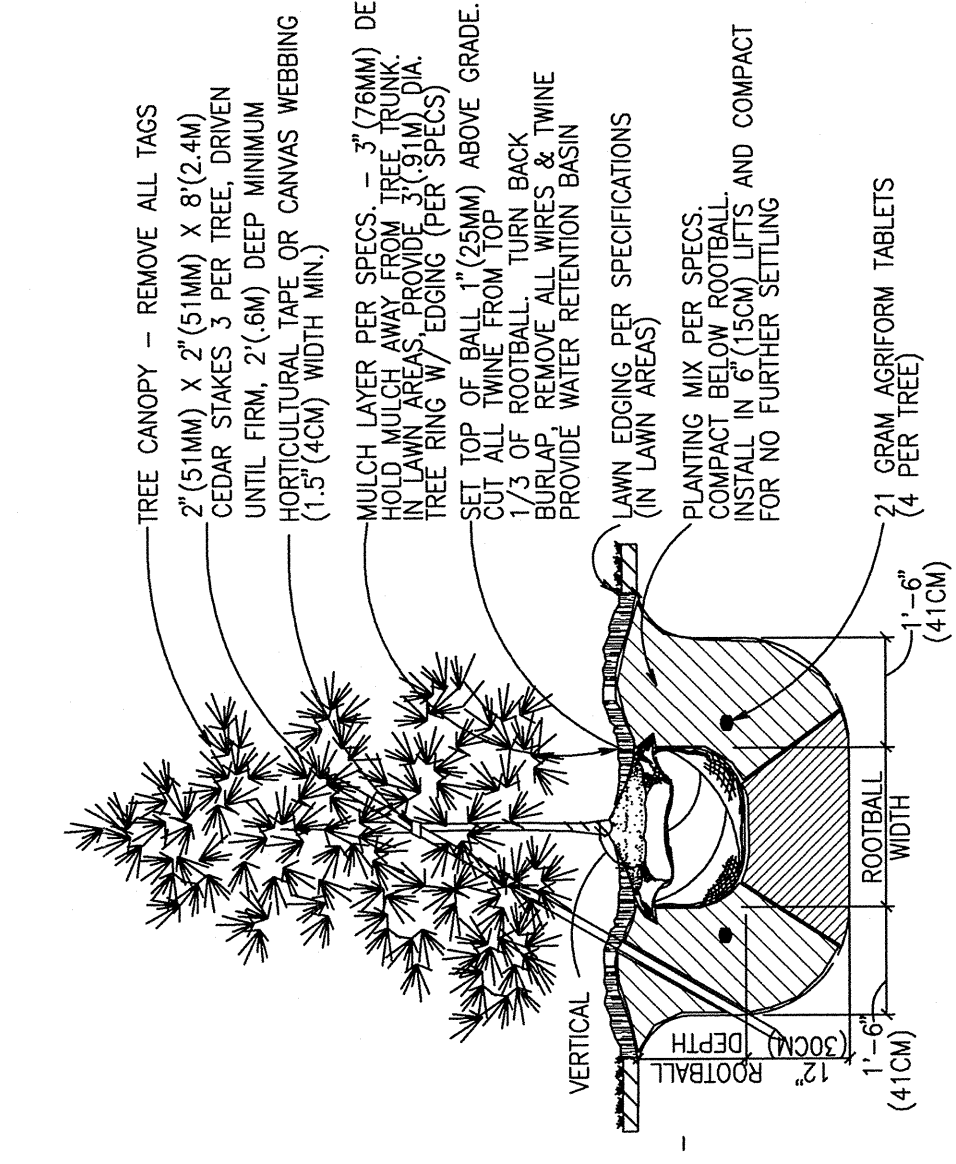
1 DECIDUOUS TREE PLANTING
 SCALE 1" = 1'-0"



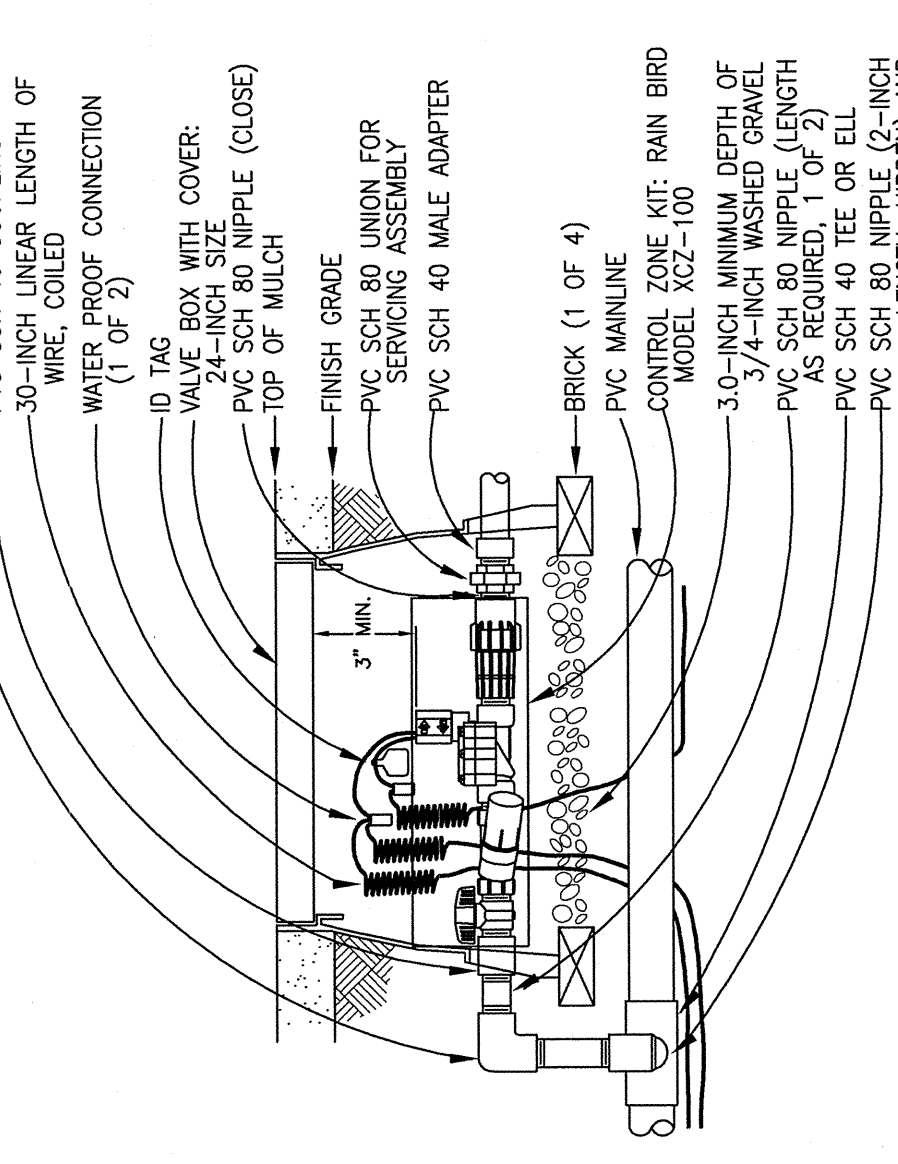
2 CONIFEROUS TREE PLANTING
 SCALE 1" = 1'-0"



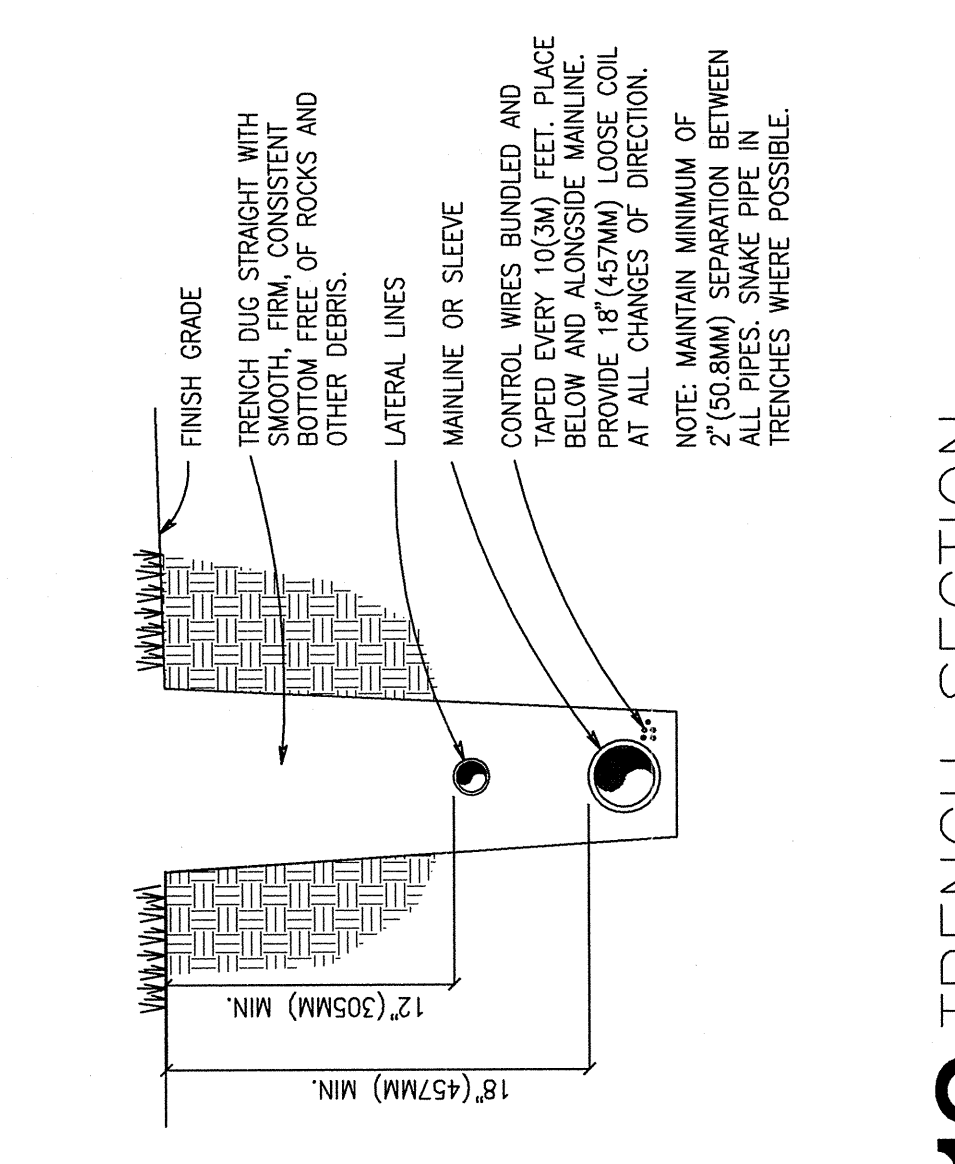
3 DOUBLE CHECK VALVE
 SCALE 1" = 1'-0"



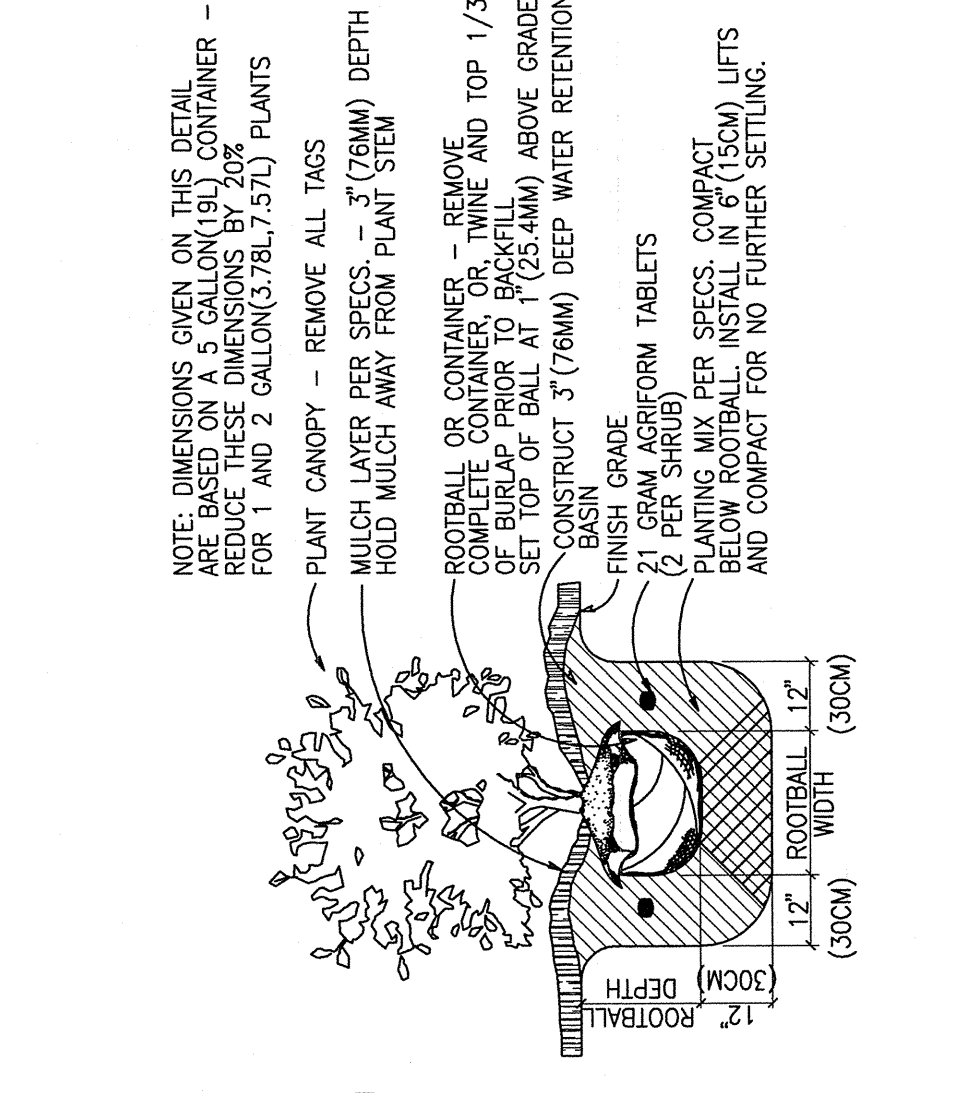
4 CONTROL ZONE KIT
 SCALE 1" = 1'-0"



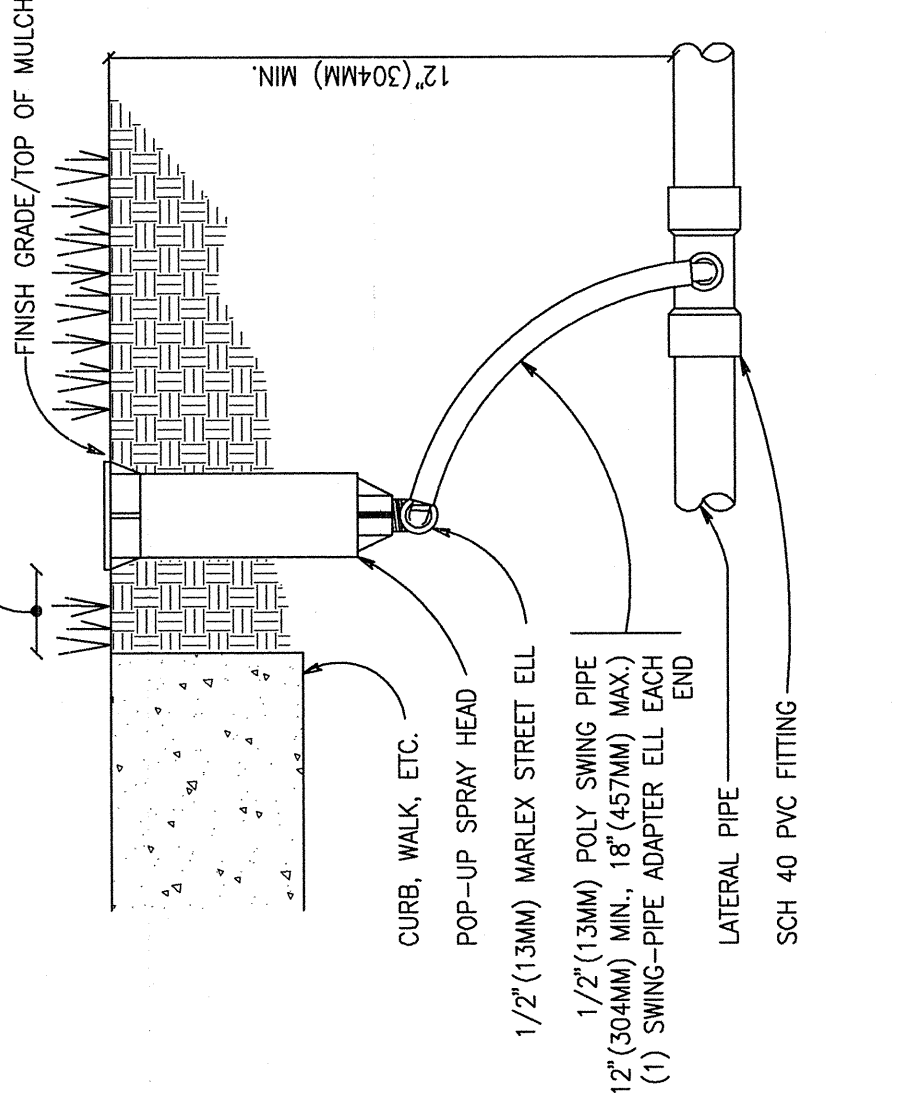
5 POP-UP SPRAY SPRINKLER
 SCALE 3" = 1'-0"



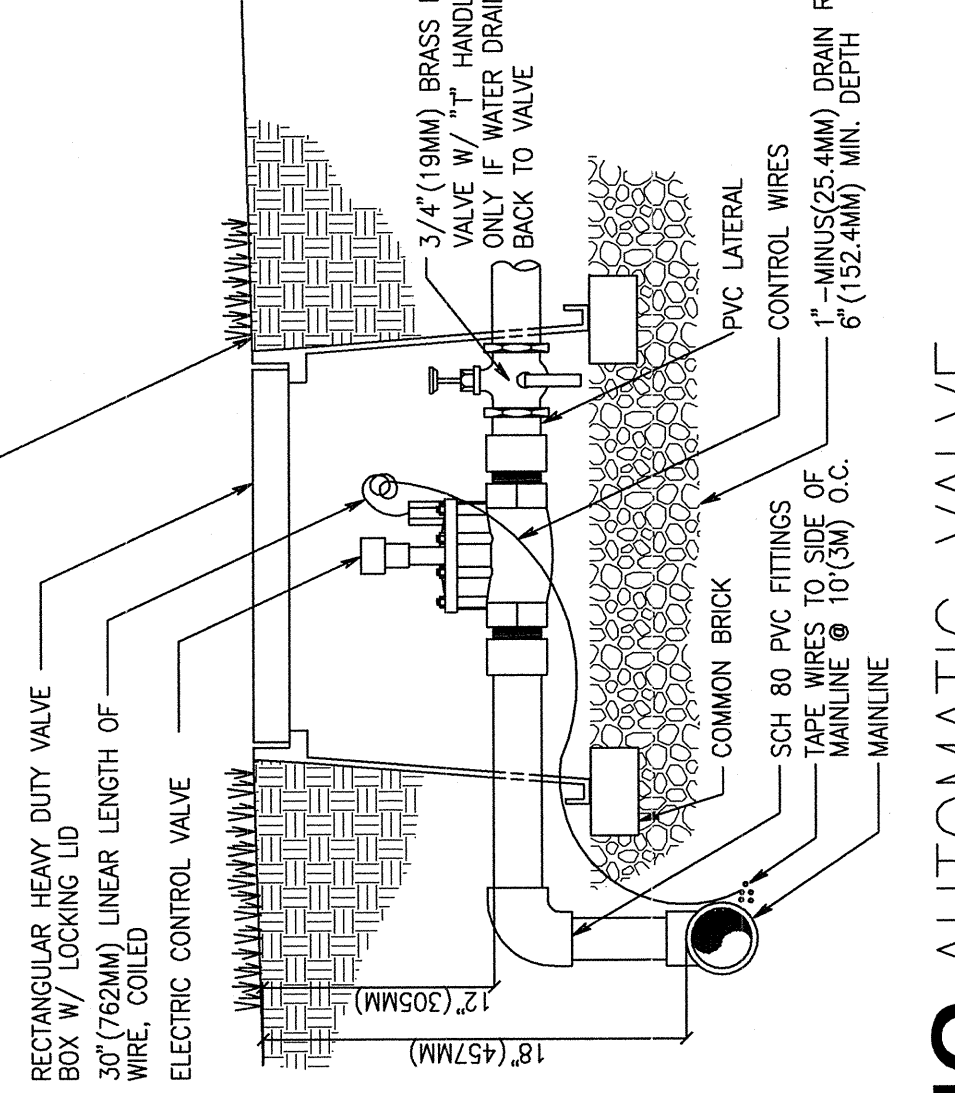
6 TECHLINE TREE PLANTING
 SCALE 1 1/2" = 1'-0"



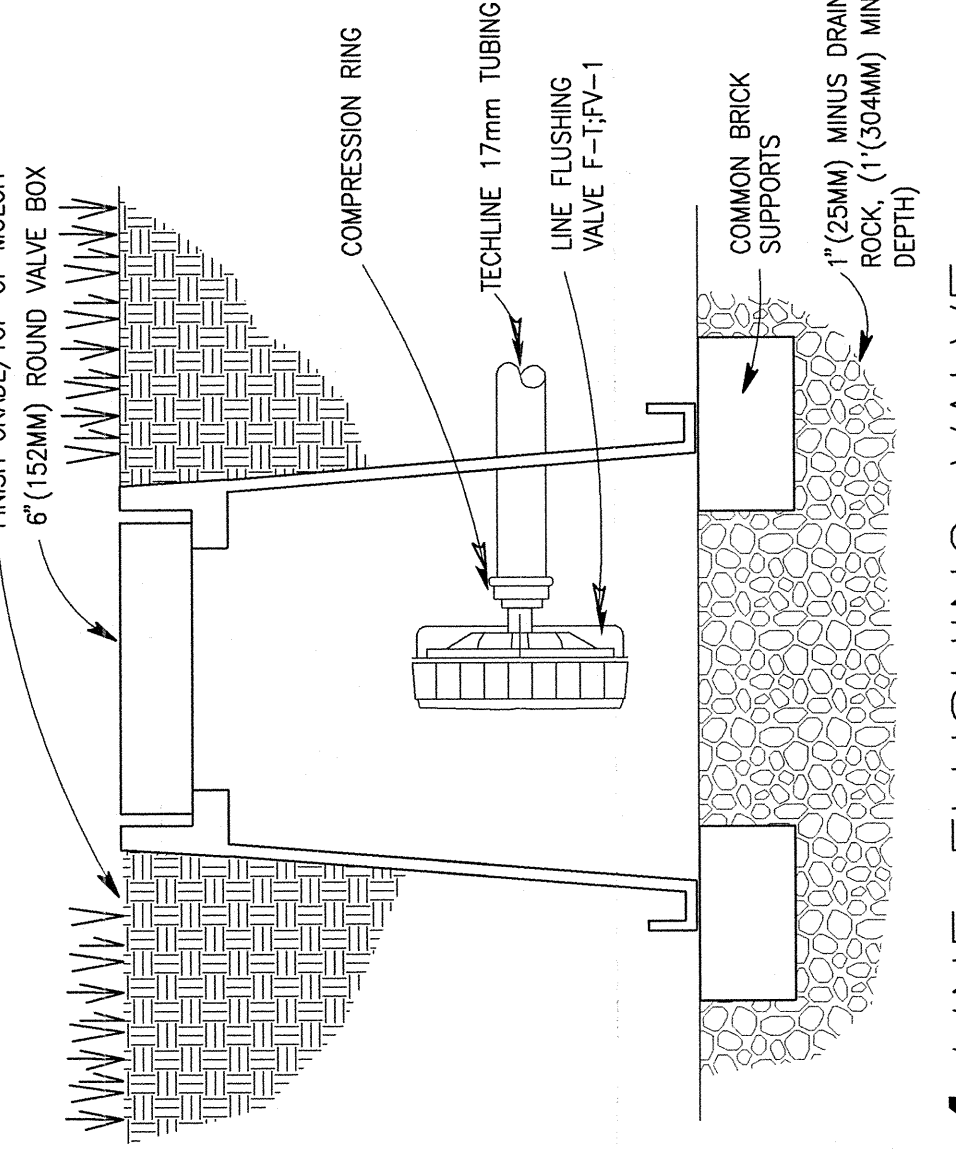
7 LINE FLUSHING VALVE
 SCALE 3" = 1'-0"



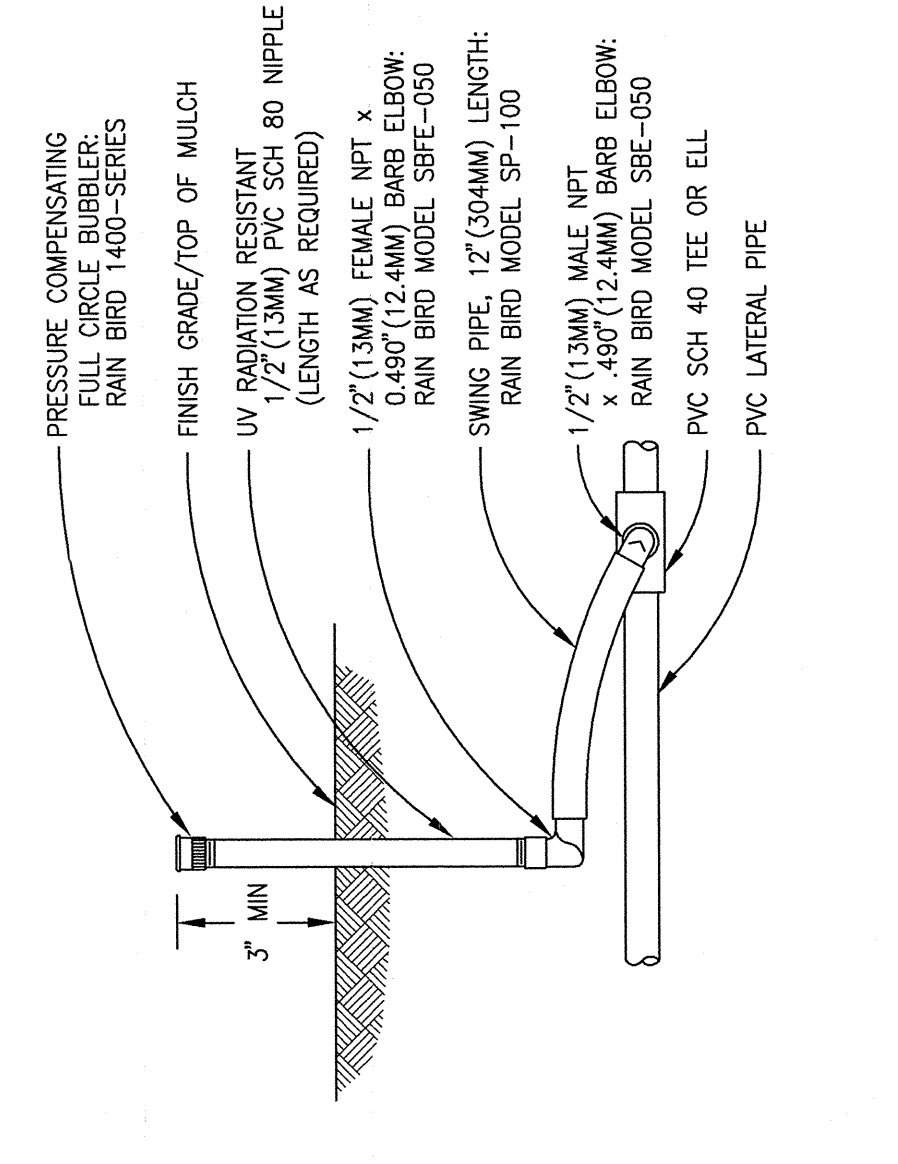
8 AIR/VACUUM RELIEF VALVE
 SCALE 3" = 1'-0"



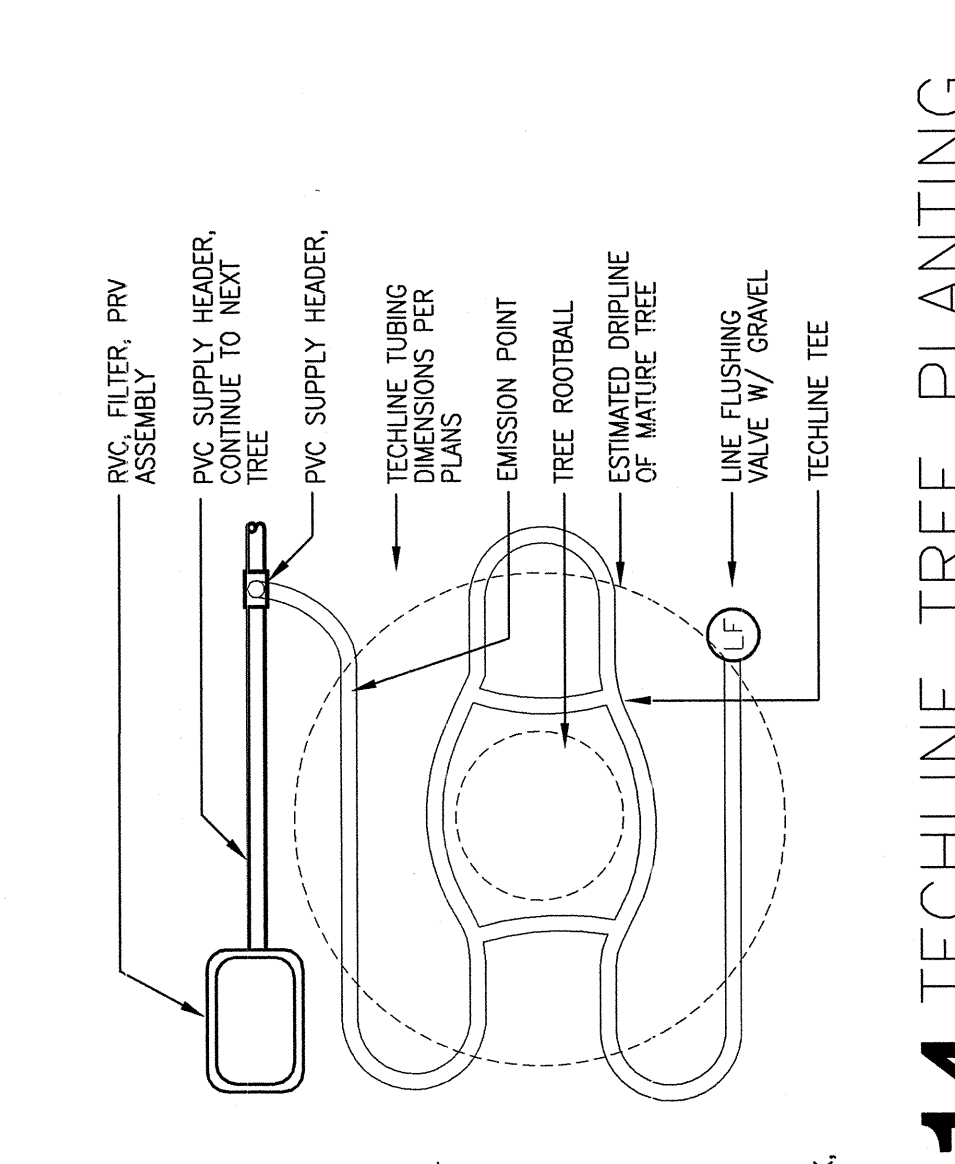
9 TECHLINE END FEED LAYOUT
 SCALE 3" = 1'-0"



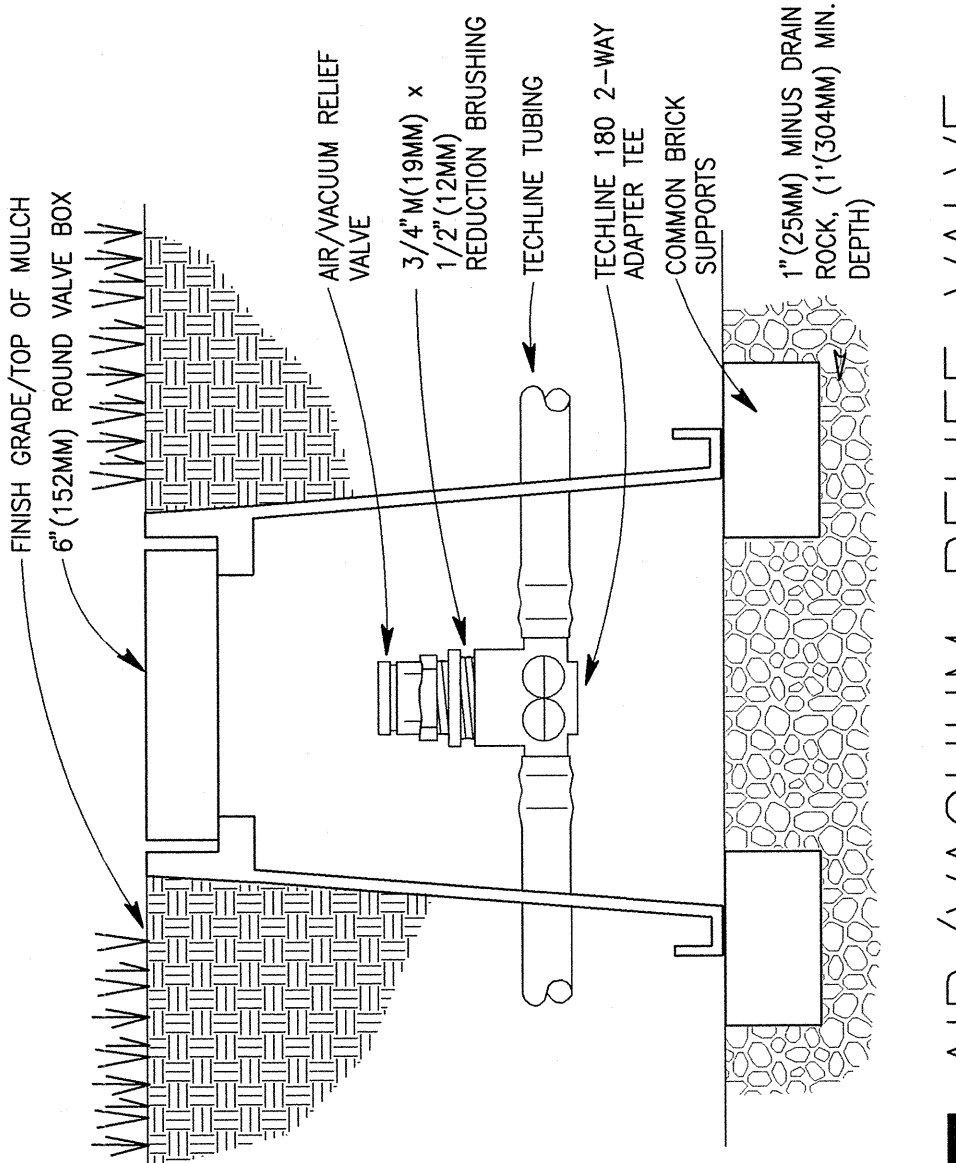
10 TECHLINE TREE PLANTING
 SCALE 3" = 1'-0"



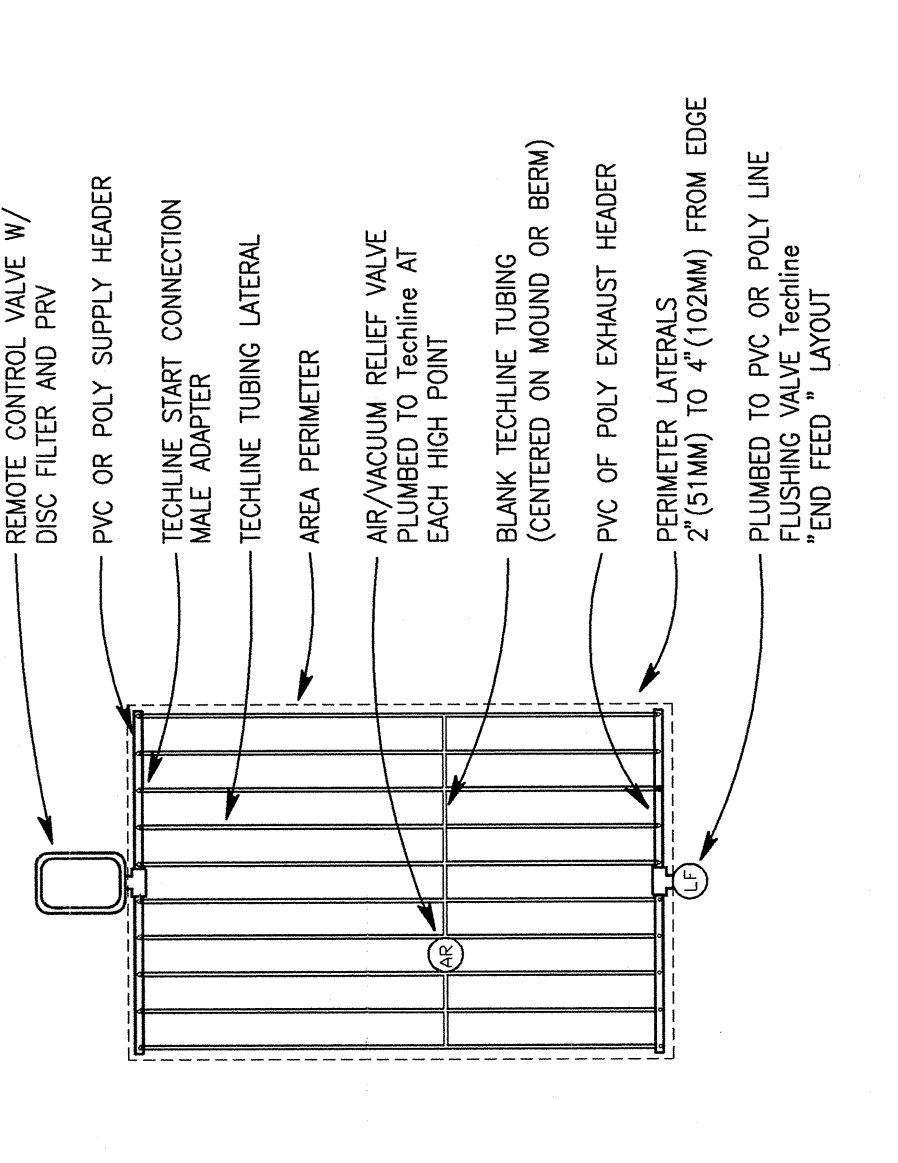
11 QUICK-COUPLER VALVE
 SCALE 3" = 1'-0"



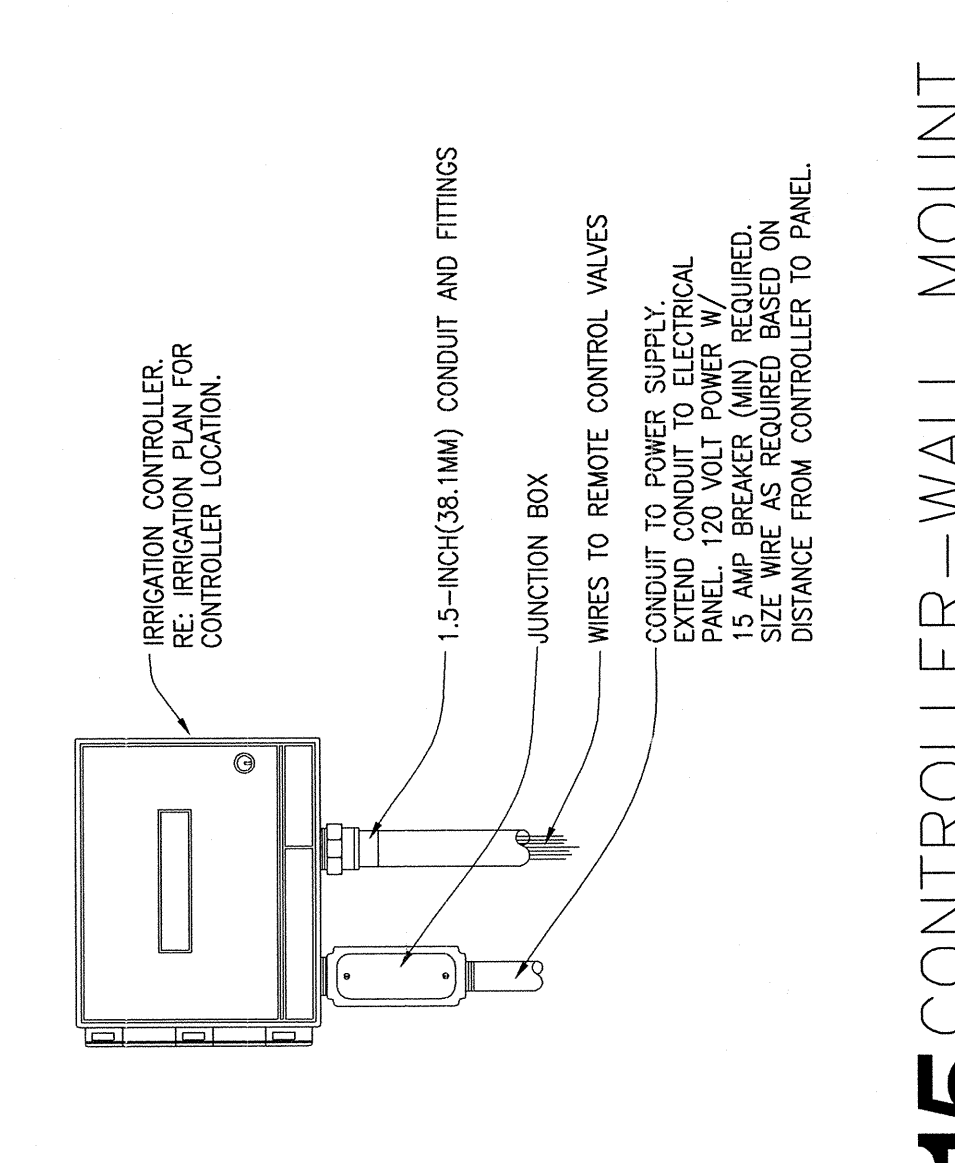
12 TRENCH SECTION
 SCALE 1 1/2" = 1'-0"



13 AUTOMATIC VALVE
 SCALE 1 1/2" = 1'-0"



14 TECHLINE TREE PLANTING
 SCALE 3" = 1'-0"



15 CONTROLLER-WALL MOUNT
 SCALE: 1 1/2" = 1'-0"