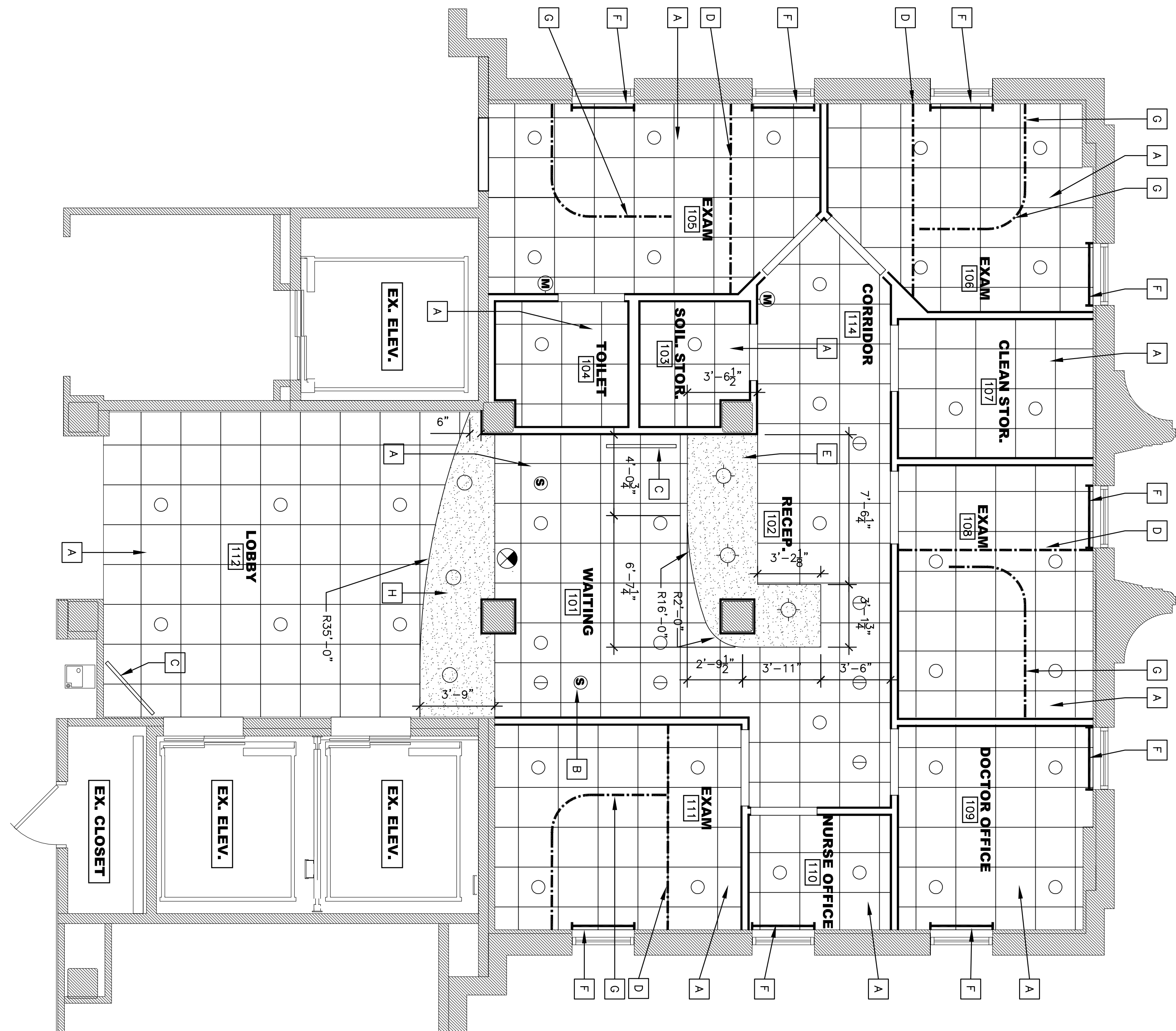


Office of  
Construction  
and Facilities  
Management

 Department of  
Veterans Affairs



- | FLOOR PLAN KEYED NOTES: |   |
|-------------------------|---|
| 1                       | RECEPTION DESK--SEE ELEVATIONS.   |
| 2                       | ESMT MACHINE--BY OWNER  |
| 3                       | MEDICAL SUPPLY CART--BY OWNER.  |
| 4                       | MOBILE LIGHT--BY OWNER.   |
| 5                       | PODIATRY CHAIR--BY OWNER.   |
| 6                       | WOUND THERAPY SYSTEM--BY OWNER.   |
| 7                       | VITAL SIGNS MONITOR--BY OWNER.  |
| 8                       | SHARPS DISPOSAL AND BIOHAZARD WASTE--BY OWNER.  |
| 9                       | WINE RACK--BY OWNER.  |
| 10                      | FURNITURE -- BY OWNER   |
| 11                      | ONMICELL CART--BY OWNER.  |
| 12                      | ULTRA--LOW CHEST FREEZER--BY OWNER.   |
| 13                      | 18"X60" FULL LENGTH MIRROR -- PROVIDE FLUORING STRIPS TO ACCOMMODATE INSTALLATION AROUND CHAIR RAIL |
| 14                      | SOILED LINEN CART--BY OWNER.  |
| 15                      | FIHR AROUND EXIST. COLUMN W/ 5/8" GYP. BD. ON 7/8" MTL. CHAIR CHANNELS                              |
| 16                      | WIRE SHELVING MOUNTED AT 48" AND 60" A.F.F.   |
| 17                      | NOT USED  |
| 18                      | SECURE SEATING TO WALL.   |

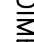
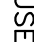






REFLECTED CEILING PLAN KEYED NOTES:

- |   |  |
|---|--|
| A | NEW 2'x2' SUSPENDED ACOUSTICAL CEILING TILE & GRID.      |
| B | RECESSED CEILING SPRINKLERS - CONNECT TO TV              |
| C | TV AND BRACKET (PROVIDED BY OWNER) - TO PROVIDE BLOCKING |
| D | FOR BRACKET INSTALLATION                                 |
| E | PRACKY CURTAIN & TRACK - SEE F4/B501 - XEROE III         |
| F | INSTALLATION, IBERIA (SAPPHIRE)                          |
| G | OPR. BD. SOPFIT AT 6'-8" AFF. - SEE B5/B501              |
| H | 2'x4'x1000 BLUMS - LAKE FOREST COLLECTION #2694          |
| I | (SHADE ROOM)   |
| J | GULLMANN CEILING LIFT GU3 W/ RECESSED TRACK - SEE        |
| K | E4/B501.   |
| L | OPR. BD. SOPFIT AT 7'-6" AFF. - SEE B5/B501              |

REFLECTED CEILING PLAN LEGEND:

- CAN LIGHT – SEE ELEC. DWGS.
- DECORATIVE PENDANT LIGHT – SEE ELEC. DWGS.
- ① CAN LIGHT W/ DIRECTIONAL REFLECTOR – SEE ELEC. DWGS.
- ② CEILING MOUNTED EXIT LIGHT – SEE ELEC. DWGS.
- ③ RECESSED CEILING SPEAKER
- ④ NURSE CALL DOME LIGHT – SEE ELEC. DWGS.

GENERAL NOTES:

1.  HATCH INDICATES EXISTING WALLS TO REMAIN.
2. DIMENSIONS ARE TO THE FACE OF GYP BD.
3. USE MOULD AND WELDER RESIST GYP BD. IN TOLIEIT 104.
4. ALL NEW CEILINGS ARE 8'-0" A.F.F. UNLESS NOTED OTHERWISE.
5.  INDICATES CHAIR PAIL (CH-R-2) AND CRASH PAIL (CH-R-1) - SEE B4 & C4/A501
6.  INDICATES CHAIR PAIL (CH-R-1) AND CRASH PAIL (CH-R-1) - SEE B4 & C4/A501
7.  INDICATES CHAIR PAIL (CH-R-1) ONLY - SEE B4/A501
8.  INDICATES SMOKE PARTITION (NO RAINING).
9.  INDICATES 1 HOUR FIRE BARRIER (UL 146B) WALL SHALL BE CONTINUOUS TO DECK
10.  CORNER GUARD (CG) - EXTEND FROM TOP OF BASE TO CEILING - SEE RFS FOR COLOR
11.  INDICATES HANDRAIL (HR-1) AND CRASHRAIL (CH-R-1) - SEE A4 & C4/A501
12. ALL PARTITIONS ARE TYPE 2 UNO. - SEE SHEET A501 FOR PARTITION LEGEND
13. PROVIDE PLAS. LAM. SISTS AT ALL EXIST. WINDOWS INSIDE AREA OF WORK
14. PROVIDE SIGNAGE TO MATCH EXIST. AT ALL DOORS IN AREA OF WORK