

MILLWORK SECTION KEYED NOTES:

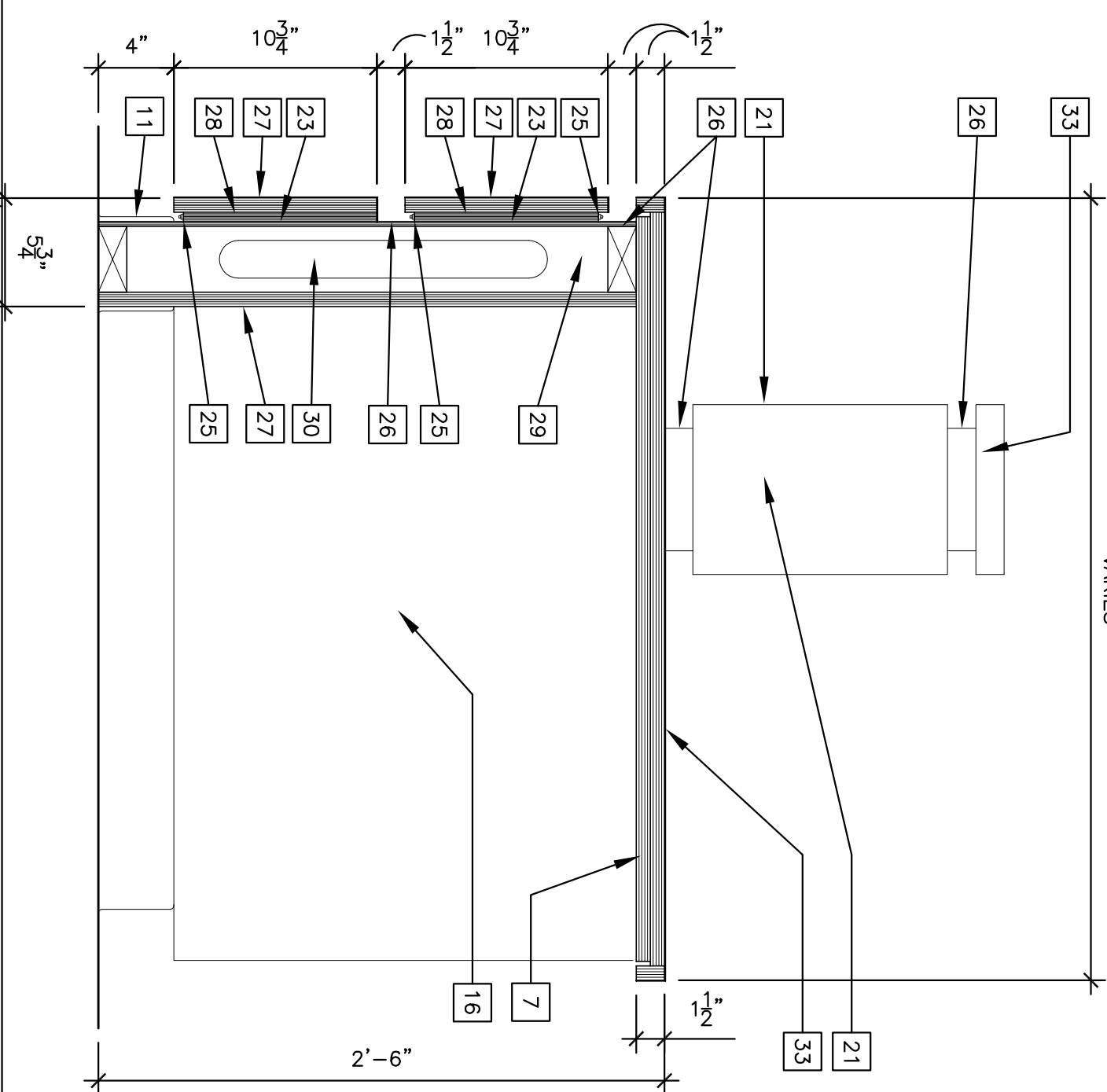
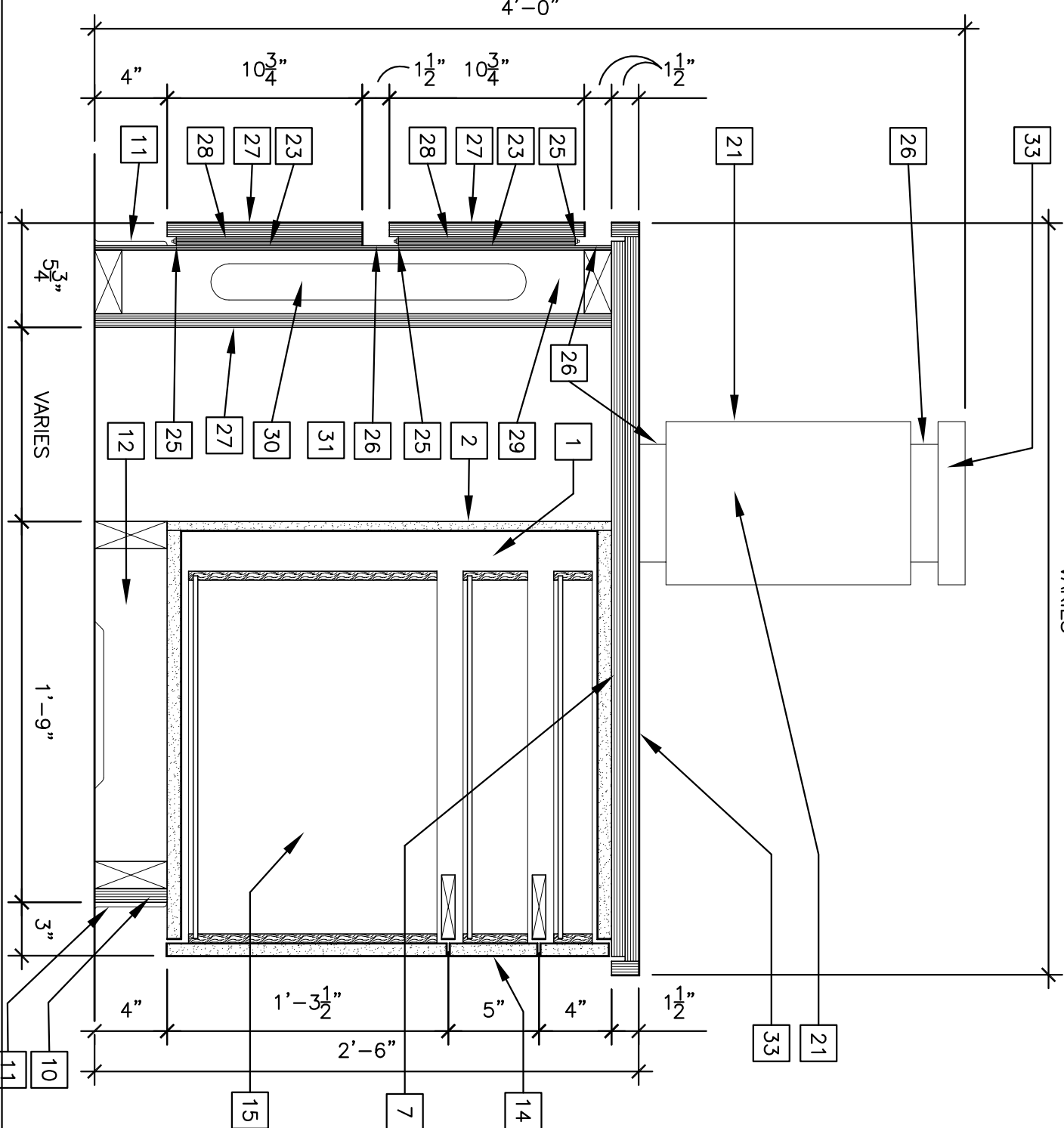
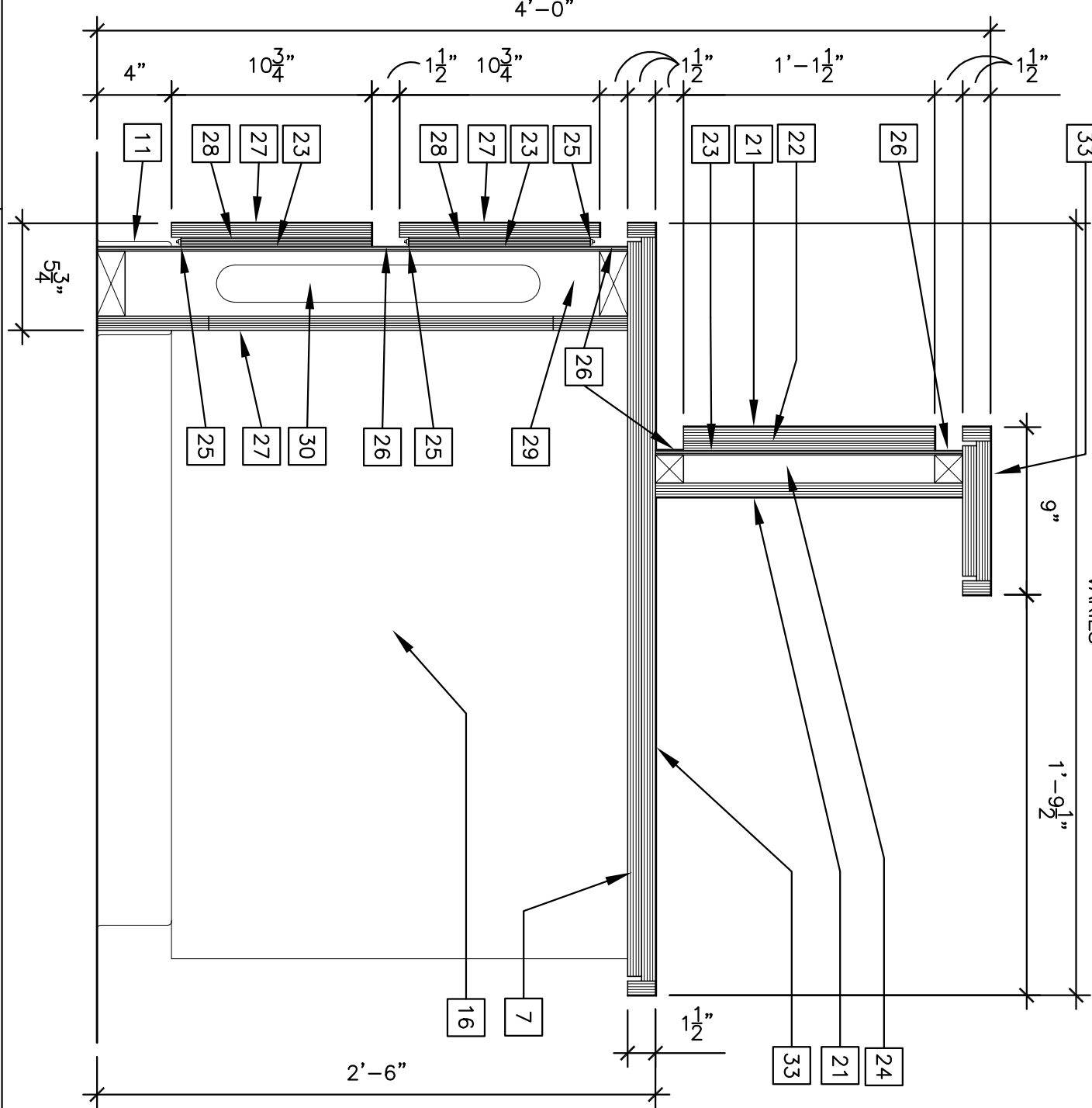
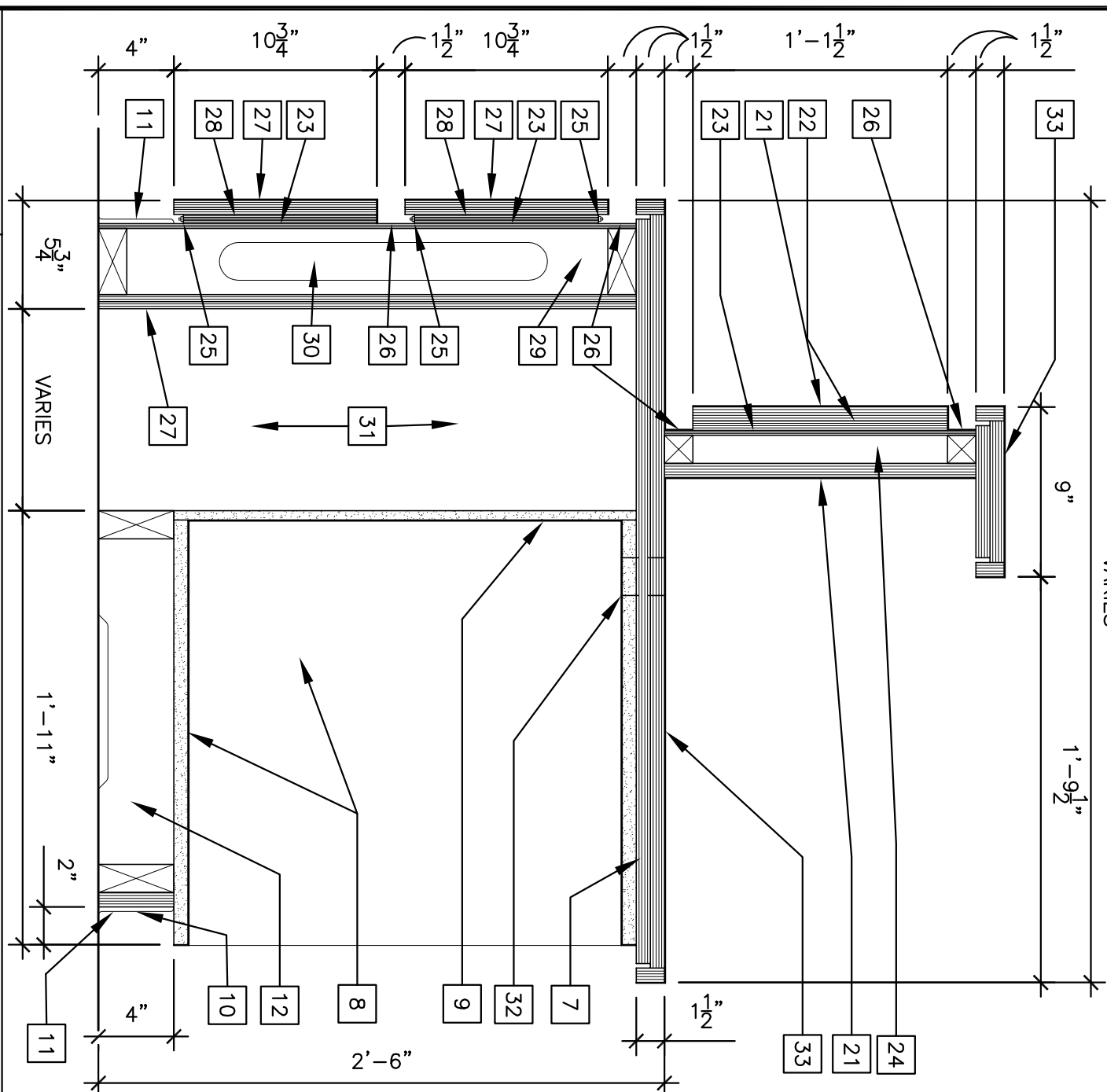
- 1 MEANINE CABINET INTERIOR.
- 2 MEANINE CABINET BACKS.
- 3 MDF CORE DOOR, PLASTIC LAMINATE CLAD (L-3).
- 4 LINE BORE AT 32mm O.C. FOR ADJUSTABLE SHELF.
- 5 SHELF CLIPS, 4 PER SHELF.
- 6 SOLID SURFACE COUNTERTOP AND BACKSPLASH (SS-1).
- 7 PLYWOOD SUBTOP.
- 8 PLYWOOD DOOR, PLASTIC LAMINATE CLAD.
- 9 PARTICLE BOARD, PLASTIC LAMINATE CLAD.
- 10 DDX PLYWOOD TOEICK.
- 11 BASE. SEE ROOM FINISH SCHEDULE.
- 12 2x BLOCKING AS REQUIRED.
- 13 2x4 CLANT.
- 14 MDF CORE DRAWER FRONT, PLASTIC LAMINATE CLAD.
- 15 HARDWOOD DRAWER SIDES AND BACK WITH PLYWOOD BOTTOM.
- 16 CABINET BEYOND.
- 17 INTEGRAL SINK.
- 18 FAUCET. SEE PLUMBING.
- 19 SINK PIPING. SEE PLUMBING.
- 20 1x4 LATERAL TILE STRIP. PLASTIC LAMINATE APPLIED TO FRONT EDGE.
- 21 PLYWOOD PLASTIC LAMINATE CLAD (L-1).
- 22 PLYWOOD.
- 23 PLYWOOD.
- 24 2x2 FRAMING AT 16" ON CENTER.
- 25 CONTINUOUS LED TAPE LIGHTING - EXPRESS LIGHTING EX-RBL (ON EQUAL).
- 26 PLASTIC LAMINATE (L-2) APPLIED TO EXPOSED FACE OF REVEAL.
- 27 TWO LAYERS 8" BENDING PLYWOOD PLASTIC LAMINATE CLAD (L-1).
- 28 TWO LAYERS 1/4" PLYWOOD BENT TO RADIUS REQUIRED.
- 29 2x4 STUDS AT 16" ON CENTER.
- 30 SLOT STUDS FOR ELECTRICAL.
- 31 EXTEND CABINET END TO CLOSE GAP BETWEEN CABINET BACK AND WALL.
- 32 PROVIDE GROUTLET @ EX. CABINET
- 33 SOLID SURFACE COUNTERTOP TOP (SS-2)

B1 SECTION AT WALL CABINET

B2 SECTION AT CPU CABINET

B4 SECTION AT LAP DRAWER

B6 SECTION AT SINK BASE

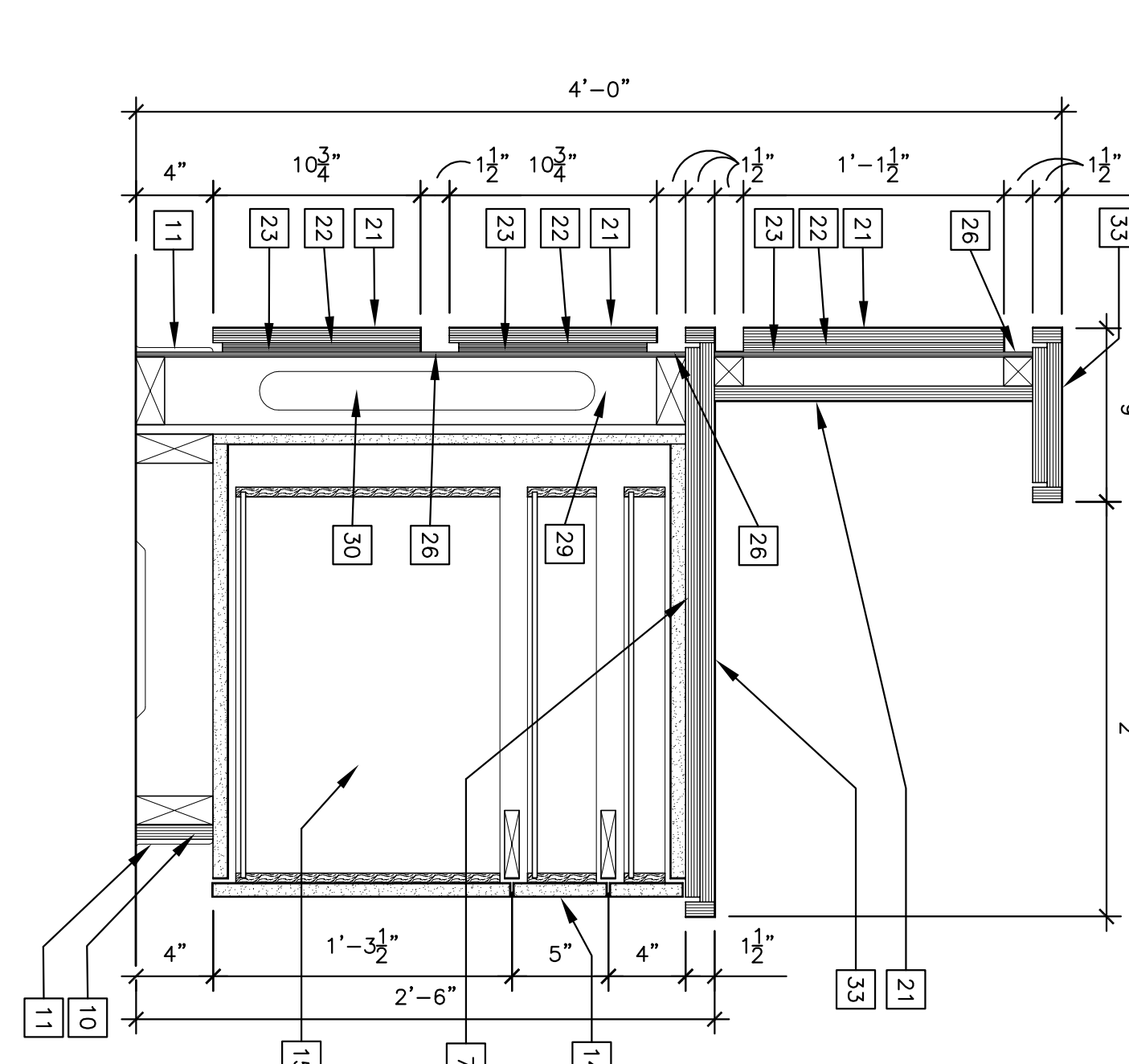
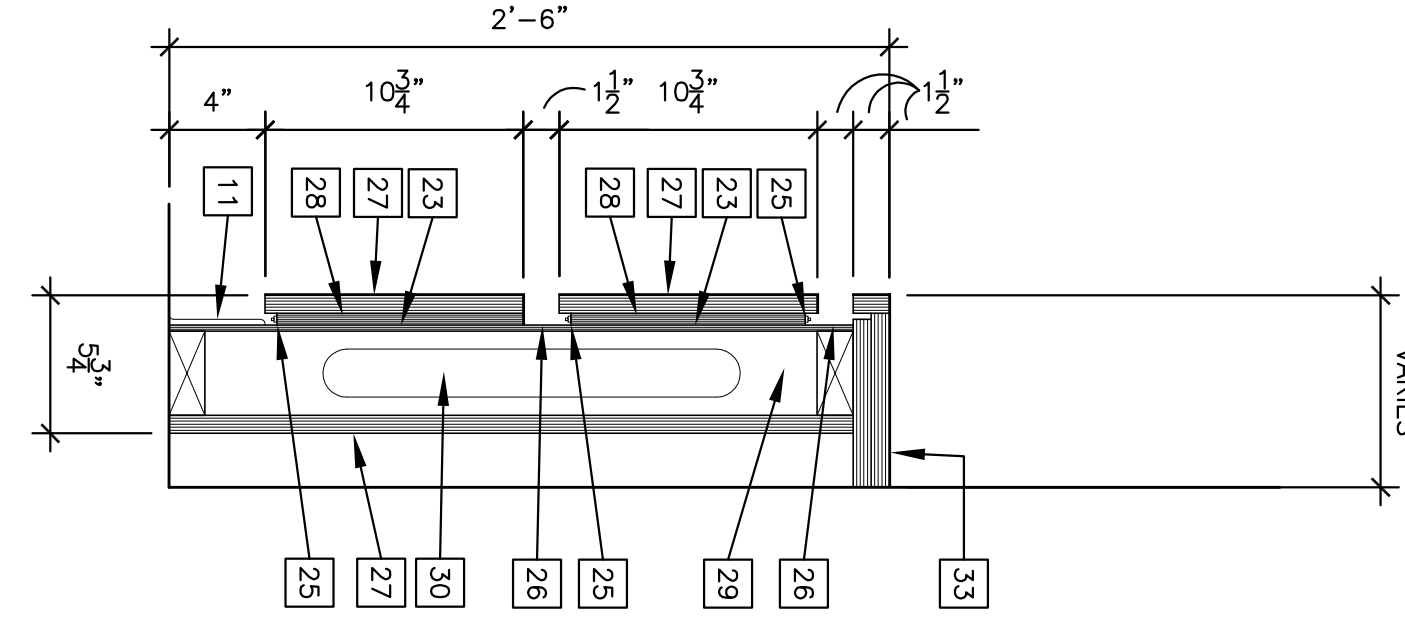
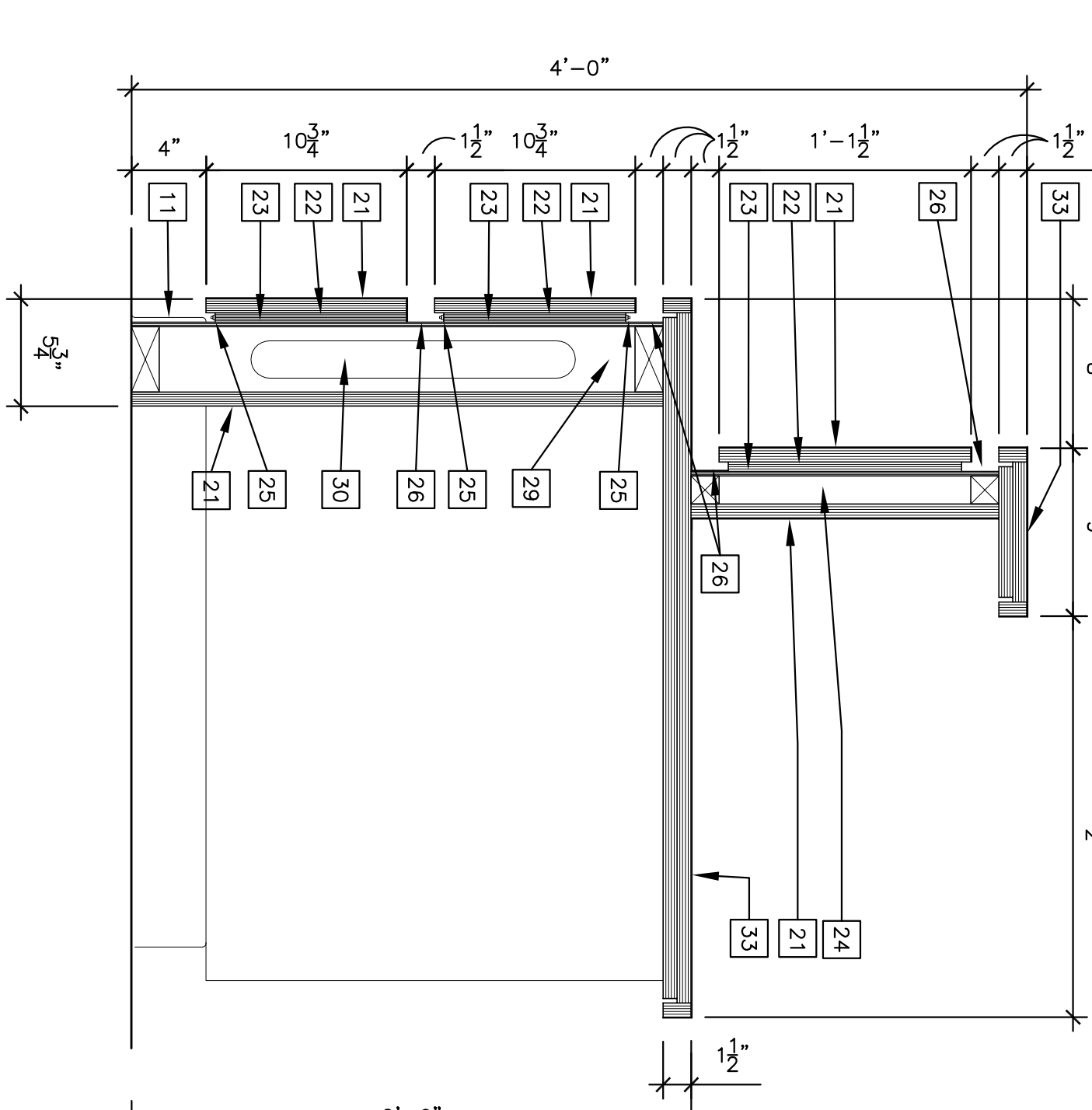
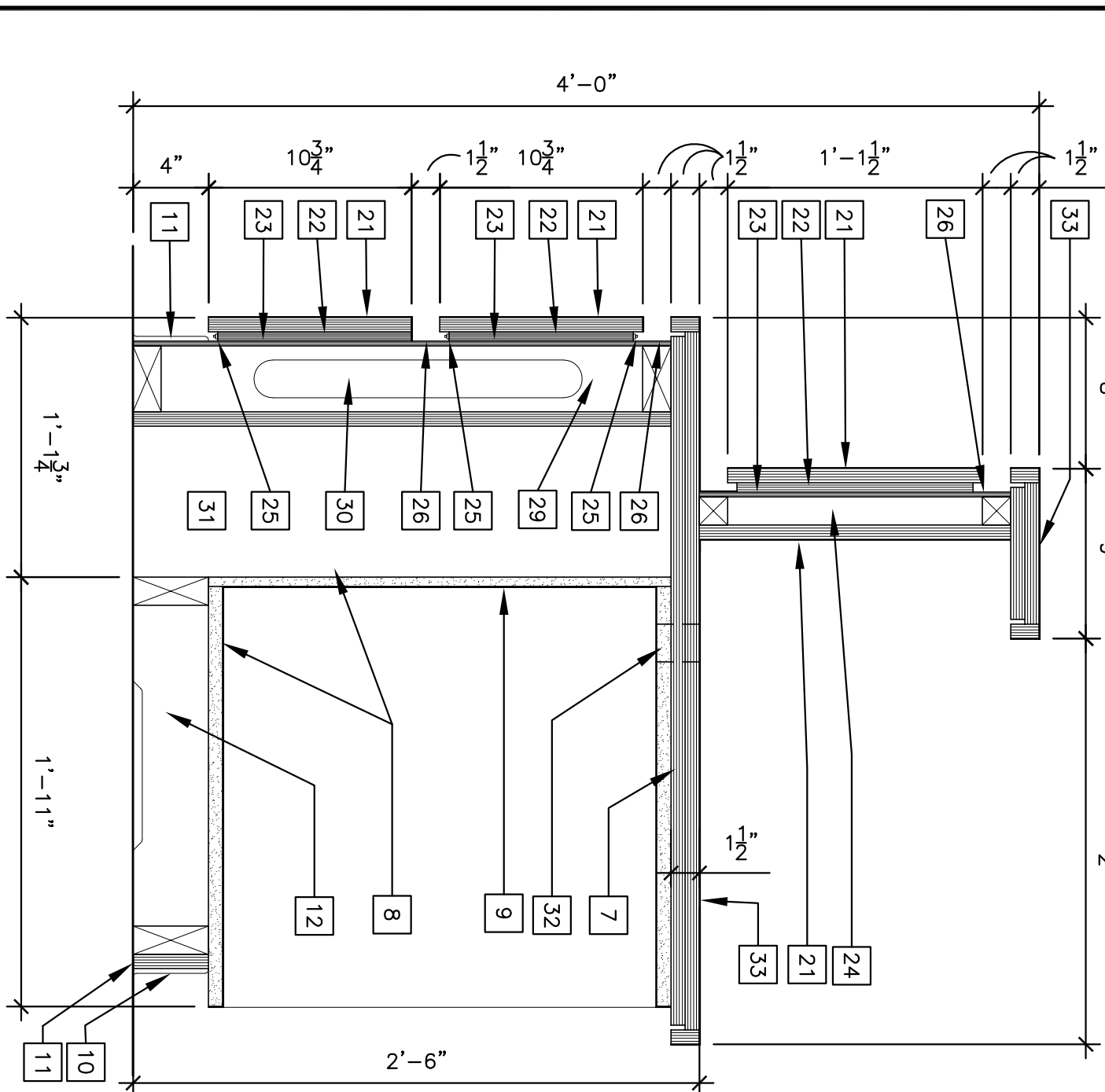


D1 SECTION AT RECEPTION DESK

D2 SECTION AT RECEPTION DESK

D4 SECTION AT RECEPTION DESK

D6 SECTION AT RECEPTION DESK



F1 SECTION AT RECEPTION DESK

F2 SECTION AT RECEPTION DESK

F4 SECTION AT RECEPTION DESK

F6 SECTION AT RECEPTION DESK

CONSULTANTS:

ARCHITECT/ENGINEERS:

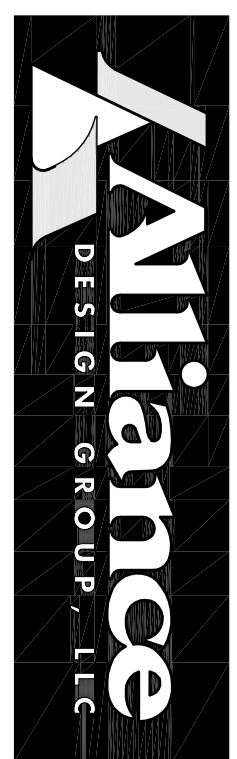
Drawing Title

Project Title

Building Number

Office of Construction and Facilities Management

3616 Masonic Drive
Alexandria, VA 71301
Ph: 318.445.3151
Fm: 318.445.3988
Em: adg@adgllc.net



Approved Project Director

Location
ALEXANDRIA

Dwg Number
A401

