

ROOM FINISH SCHEDULE

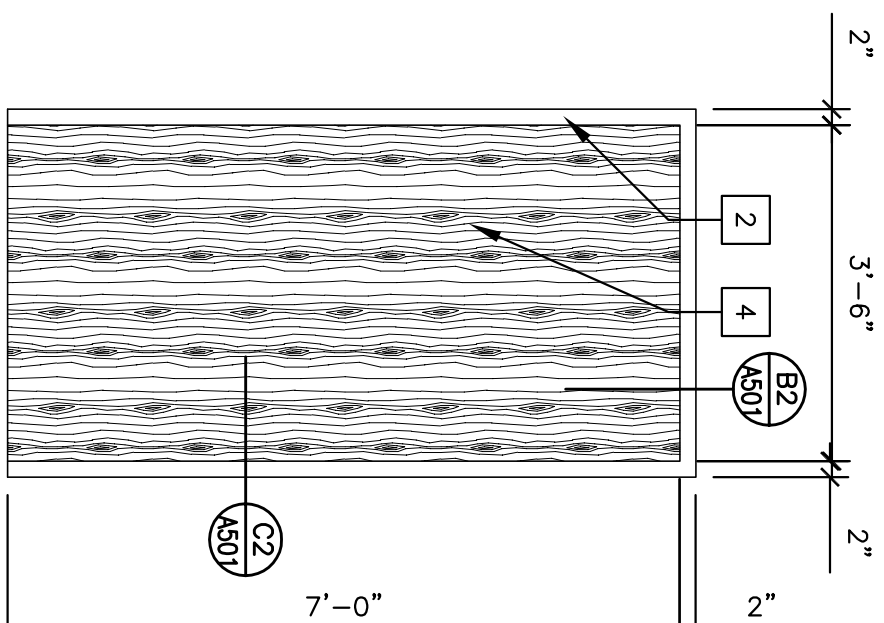
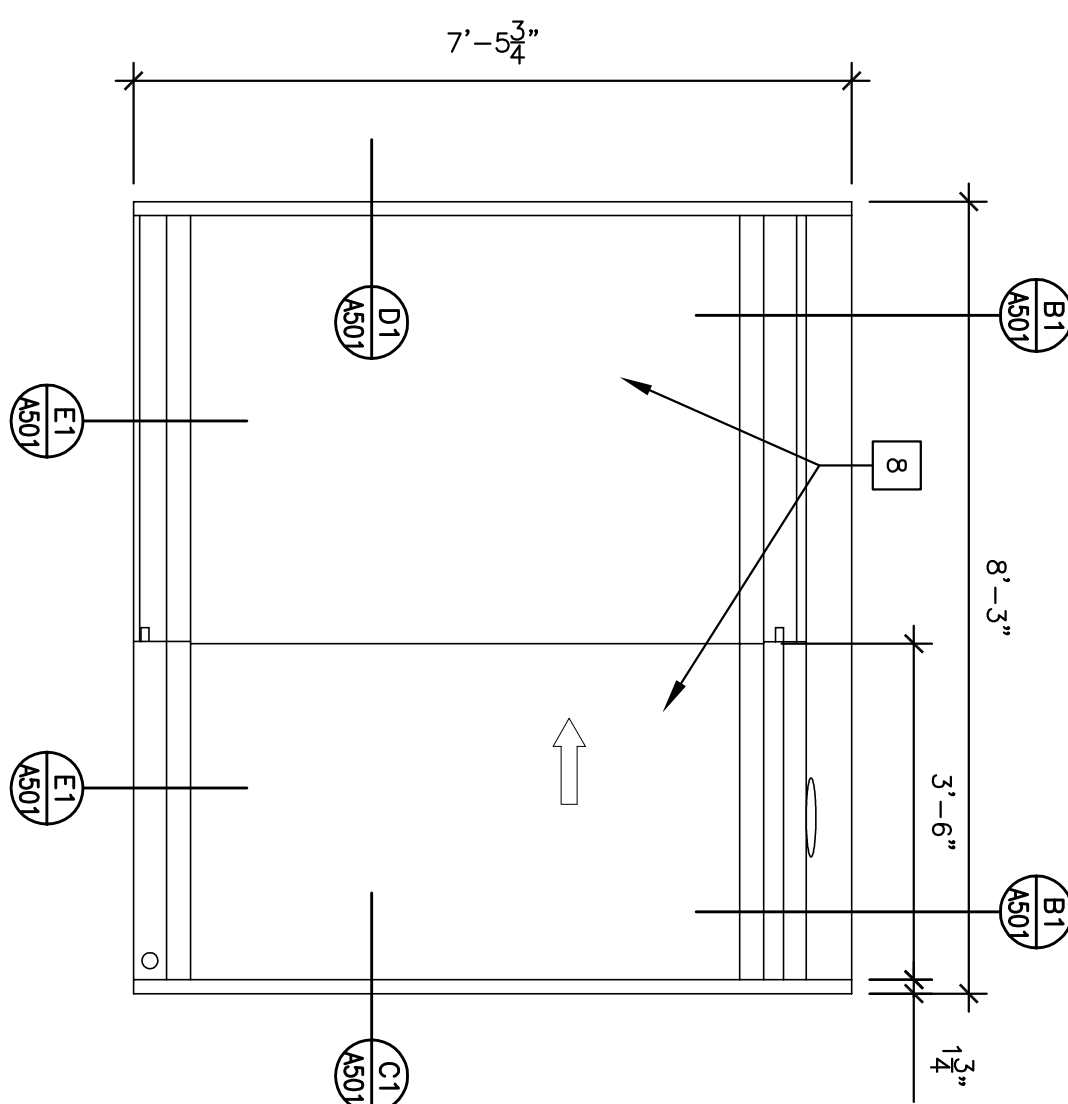
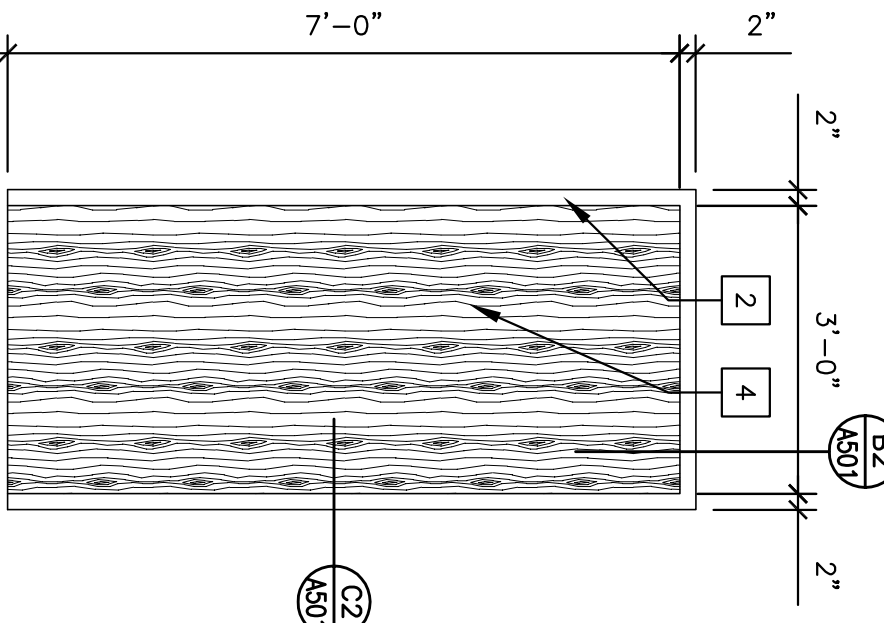
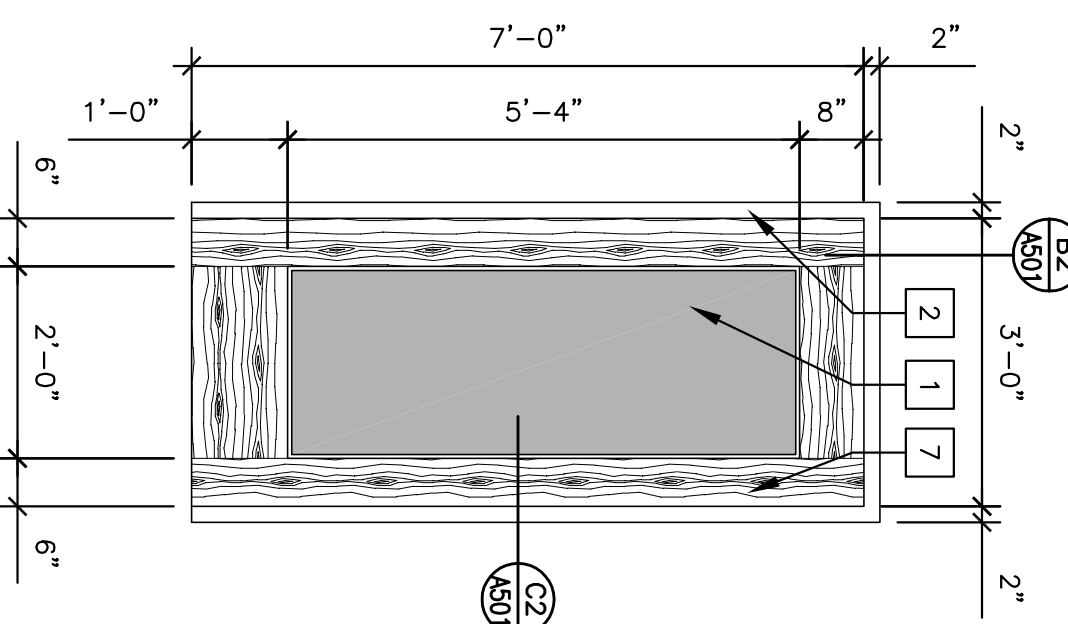
NO.	ROOM NAME	FLOOR	BASE	N WALL	FINISHES			REMARKS
					S WALL	W WALL	CEILING/FT.	
101	WAITING	F-2	B-1	-	-	P-2	WP-2	AT-1 807 A.F.F. 1
102	RECEP.	F-2	B-1	-	-	-	-	807 A.F.F. 5
103	SOLED STOR.	F-2	B-2	P-4	P-4	P-4	W-1	807 A.F.F. 2
104	TOILET	FT-1, FT-2	-	WT-1	WT-1	WT-1	WT-1	807 A.F.F. 3, 4, 6
105	EXAM	F-2	B-2	P-4	P-4	P-4	W-1	807 A.F.F. 2
106	EXAM	F-2	B-2	P-4	P-4	P-4	W-1	807 A.F.F. 2
107	CLEAN STOR.	F-2	B-2	P-4	P-4	P-4	W-1	807 A.F.F. 2
108	EXAM	F-2	B-2	P-4	P-4	P-4	W-1	807 A.F.F. 2
109	DOCTOR OFFICE	F-2	B-1	P-4	P-4	P-4	AT-1	807 A.F.F. 2
110	NURSE OFFICE	F-2	B-1	P-4	P-4	P-4	AT-1	807 A.F.F. 2
111	EXAM	F-2	B-2	P-4	P-4	P-4	W-1	807 A.F.F. 2
112	LOBBY	F-1, F-2, F-3	B-1	P-4	P-4	P-4	W-1	807 A.F.F. 2, 5
113	NOTIFIED	F-2	B-2	P-4	P-4	P-4	W-1	807 A.F.F. 2
114	CORRIDOR	F-2	B-1	P-3	P-3	P-3	WPP-1	807 A.F.F. 2

REMARKS:

- SEE PLAN FOR FLOOR PATTERN
- INSTALL WAINSCOT 36" HIGH
- SEE ELEVATIONS FOR TILE PATTERN AND AGENT TILE
- SEE ELEVATIONS FOR TILE PATTERN AND AGENT TILE
- SEE ELEVATIONS FOR TILE PATTERN AND AGENT TILE
- USE B-4 FOR THE TRANSITION FROM PORCELAIN TILE TO VINYL TILE

FINISH LEGEND:

PAINT: F-1 (LOBBY WALL) MANUF: SHERWIN WILLIAMS COLOR: SW6010 WICKERWORKS FINISH: EGGSHELL P-2 (WAITING WALL) MANUF: SHERWIN WILLIAMS COLOR: SW2010 WICKERWORKS FINISH: EGGSHELL P-3 (CORRIDOR & SOFT) MANUF: SHERWIN WILLIAMS COLOR: SW2835 CRAFTSMAN BROWN FINISH: EGGSHELL P-4 (GENERAL WALL) MANUF: SHERWIN WILLIAMS COLOR: SW6006 BLACK BEAN FINISH: EGGSHELL P-6 (DOOR FRAMES) MANUF: SHERWIN WILLIAMS COLOR: SW6006 BLACK BEAN FINISH: EGGSHELL F-1 (BATHROOM FLOOR TILE) MANUF: AMERON OLEEN COLOR: DEERBY BROWN PATTERN: DIAMOND GROUT: F-GR-1 F-2 (BATHROOM BASE TILE) MANUF: AMERON OLEEN COLOR: AMBER VALLEY (AM89) SIZE: 6.5x6.5 GROUT: F-GR-1 F-GR-1 (EPoxy FLOOR GROUT) MANUF: LATICRETE STYLE: Sanded Grout (#35) COLOR: MOCHA WT-1 (BATHROOM WALL TILE) MANUF: AMERON OLEEN COLOR: WILSTONE BEIGE SIZE: 13"x13" PATTERN: BRICK GROUT: W-GR-2 WT-2 (BATHROOM AGENT TILE) STYLE: AMBER VALLEY (TV79) COLOR: INDIA AUTUMN SIZE: 3"x12" GROUT: W-GR-2 F-GR-2 (GROUT) MANUF: LATICRETE STYLE: Sanded Grout (#81) COLOR: BUTTERCREAM	RESIDENT VINYL TILE: F-1 (GENERAL) MANUF: GENIVA STYLE: CONTOUR STONE (CS-0610-C-S5) COLOR: TAILETA PATTERN: SEE PLAN F-2 (GENERAL) MANUF: GENIVA STYLE: EVENT SERIES PLANK (WP-3309-E-N5) COLOR: LAMBD OAK PATTERN: SEE PLAN F-3 (ACCENT) MANUF: GENIVA STYLE: CONTOUR SERIES PLANK (CP-3310-C-1X) COLOR: KENNESLAND WALNUT PATTERN: SEE PLAN VINYL BASE: B-1 (GENERAL) MANUF: JOHNSONITE STYLE: MW DIPLOMAT PROFILE COLOR: #47 BROWN B-2 (GYM AND STORAGE) MANUF: JOHNSONITE STYLE: COVE COLOR: #45 SANDALWOOD B-4 (TRANSITION) MANUF: JOHNSONITE STYLE: CTA-47-X COLOR: #47 BROWN STAIN: ST-1 (DOOR STAIN) MANUF: T.B.D. COLOR: T.B.D. SOLID SURFACE: SS-1 (EXAM COUNTER) MANUF: HANNAH SURFACES STYLE: HANSTONE QUARTZ (RS316) COLOR: CARBIBEAN BLUE SS-2 (RECEPTION COUNTER) MANUF: HANNAH SURFACES STYLE: HANSTONE QUARTZ (RU605) COLOR: PINE PLASTIC LAMINATE: L-1 (MANUF: FORMICA STYLE: 6209-LX COLOR: PRESTIGE WALNUT L-2 (REVEAL RECEPTION DESK) MANUF: FORMICA STYLE: 6202-RW COLOR: BRAZILIAN BROWN GRANITE L-3 (GYM DESK) MANUF: FORMICA STYLE: 6202-RW COLOR: CLAYCRETE	ACOUSTICAL CEILING: AT-1 MANUF: ARMSTRONG 704 SIZE: 2'x2' REGULAR VINYL WALL PROTECTION: W-1 MANUF: ACRYOYN STYLE: WALL GUARD (#196) COLOR: FAWN SIZE: .04 THICK CORNER GUARD: CG-1 MANUF: ACRYOYN STYLE: SW-20 COLOR: 362 COCOA MAPLE CG-2 (EXAM ROOMS) MANUF: ACRYOYN STYLE: PAVANA LINEN COLOR: 196 FAWN VINYL COVERING: WPP-1 MANUF: VERSA STYLE: DYEIA (XZ1-S33) COLOR: PAVANA LINEN WPP-2 MANUF: LAMARK STYLE: TYPE II (R2-BK-03) COLOR: DREAMLAND WALL PROTECTION: WPP-1 MANUF: ACRYOYN STYLE: SW-48 COLOR: 362 COCOA MAPLE SIZE: 6" CHR-2 (EXAM CHAIRRAIL) MANUF: ACRYOYN STYLE: SW-48 COLOR: 362 FAWN SIZE: 6" CR-1 (EXAM GRASS RAIL) MANUF: ACRYOYN STYLE: FRZ70 COLOR: 382 COCOA MAPLE SIZE: 2" HR-1 (HANDRAIL) MANUF: ACRYOYN STYLE: FRZ70 COLOR: 382 COCOA MAPLE SIZE: 5.5"
--	---	---



B5 DOOR TYPE "01"

B6 DOOR TYPE "02"

B7 DOOR TYPE "03"

B9 DOOR TYPE "04"

DOOR & WINDOW KEYED NOTES:

- 1" FROSTED SAFETY GLASS.
- PAINTED HOLLOW METAL FRAME.
- 1" SAFETY GLASS.
- SOLID CORE WOOD DOOR.
- 1/2" x 1/2" ALUMINUM FRAME.
- GLASS ETCHING - SEE ELEVATIONS (VERIFY CONTENT WITH OWNER)
- STILE AND RAIL WOOD DOOR.
- AUTOMATIC HORIZONTAL SLIDING DOOR - SEE SPECS.

DOOR AND WINDOW SCHEDULE									
NO.	DOOR OR WINDOW	SIZE	FRAME	HDW	GRP	PAINTING	REMARKS		
101	MT TYPE	FRM	MTL	FRM	HDW-1		AUTOMATIC SLIDING DOOR WITH SILENTE		
102	AL	03	MTL	4-2" x 7-6"	AL	MTL	HDW-1	FIXED ALUMINUM FRAME	
103	AL	A	MTL	3-0" x 7-0" x 1-3/4"	AL	MTL	HDW-1	C LABEL - 45 MINUTE	
104	SC	02	ST-1	3-0" x 7-0" x 1-3/4"	STL	Pd	HDW-2		
105	SC	04	ST-1	3-0" x 7-0" x 1-3/4"	STL	Pd	HDW-5		
106	SC	02	ST-1	3-0" x 7-0" x 1-3/4"	STL	Pd	HDW-5		
107	SC	02	ST-1	3-0" x 7-0" x 1-3/4"	STL	Pd	HDW-4		
108	SC	01	ST-1	3-0" x 7-0" x 1-3/4"	STL	Pd	HDW-5		
109	SC	01	ST-1	3-0" x 7-0" x 1-3/4"	STL	Pd	HDW-5		
110	SC	02	ST-1	3-0" x 7-0" x 1-3/4"	STL	Pd	HDW-5		
111	SC	04	ST-1	3-0" x 7-0" x 1-3/4"	STL	Pd	HDW-5		

HARDWARE SCHEDULE

- HDW-1  
DOOR #101  
SOLID CORE CABINETS LOCK IN OPERATOR  
FPS COMPLAINT CARD READER (MATCH EXISTING IN BUILDING) - CONNECT TO DOOR ACCESS  
CONTROLLER AND POWER SUPPLY - TIE INTO EXIST. OPEN OPTIONS SYSTEM.  
BALANCE OF DOOR HARDWARE BY DOOR MANUFACTURER

DOOR AND WINDOW SCHEDULE									
QTY	DESCRIPTION	MODEL #	FINISH	MANUFACTURER	QTY	DESCRIPTION	MODEL #	FINISH	MANUFACTURER
3 EACH	HINGES	AB750 5x4.5	626	HAGER (OR EQUAL)	3 EACH	HINGES	AB750 5x4.5	626	HAGER (OR EQUAL)
1 EACH	FLOOR STOP	WS402CV	626	WICKER (OR EQUAL)	1 EACH	FLOOR STOP	WS402CV	626	WICKER (OR EQUAL)
3 EACH	SILENCERS	SR64	GRY	IVES (OR EQUAL)	3 EACH	SILENCERS	SR64	GRY	IVES (OR EQUAL)
1 EACH	CLOSER	D1651	AL	PEMKO (OR EQUAL)	1 EACH	CLOSER	D1651	AL	PEMKO (OR EQUAL)
1 SET	SEALS	316A5			1 SET	SEALS	316A5		
HDW-2 DOOR #103	DESCRIPTION	MODEL #	FINISH	MANUFACTURER	HDW-3 DOOR #107	DESCRIPTION	MODEL #	FINISH	MANUFACTURER
3 EACH	HINGES	AB750 5x4.5	626	HAGER (OR EQUAL)	3 EACH	HINGES	AB750 5x4.5	626	HAGER (OR EQUAL)
1 EACH	FLOOR STOP	WS402CV	626	WICKER (OR EQUAL)	1 EACH	FLOOR STOP	WS402CV	626	WICKER (OR EQUAL)
3 EACH	SILENCERS	SR64	GRY	IVES (OR EQUAL)	3 EACH	SILENCERS	SR64	GRY	IVES (OR EQUAL)
1 EACH	CLOSER	D1651	AL	PEMKO (OR EQUAL)	1 EACH	CLOSER	D1651	AL	PEMKO (OR EQUAL)
1 SET	SEALS	316A5			1 SET	SEALS	316A5		
HDW-4 DOOR #107	DESCRIPTION	MODEL #	FINISH	MANUFACTURER	HDW-5 DOORS #105, 106, 109, 110 & 111	DESCRIPTION	MODEL #	FINISH	MANUFACTURER
3 EACH	HINGES	AB750 5x4.5	626	HAGER (OR EQUAL)	3 EACH	HINGES	AB750 5x4.5	626	HAGER (OR EQUAL)
1 EACH	FLOOR STOP	WS402CV	626	WICKER (OR EQUAL)	1 EACH	FLOOR STOP	WS402CV	626	WICKER (OR EQUAL)
3 EACH	SILENCERS	SR64	GRY	IVES (OR EQUAL)	3 EACH	SILENCERS	SR64	GRY	IVES (OR EQUAL)
1 EACH	CLOSER	D1651	AL	PEMKO (OR EQUAL)	1 EACH	CLOSER	D1651	AL	PEMKO (OR EQUAL)
1 SET	SEALS	316A5			1 SET	SEALS	316A5		

CONSULTANTS:

ARCHITECT/ENGINEERS:

3616 Masonic Drive  
Alexandria, VA 71301  
Ph: 318.445.3151  
Fx: 318.445.3988  
Em: adg@adgllc.net



Drawing Title

SCHEDULES

Project Title

Project Number

Building Number

Office of Construction and Facilities Management

Department of Veterans Affairs