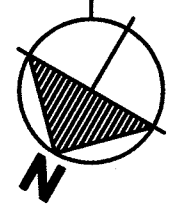
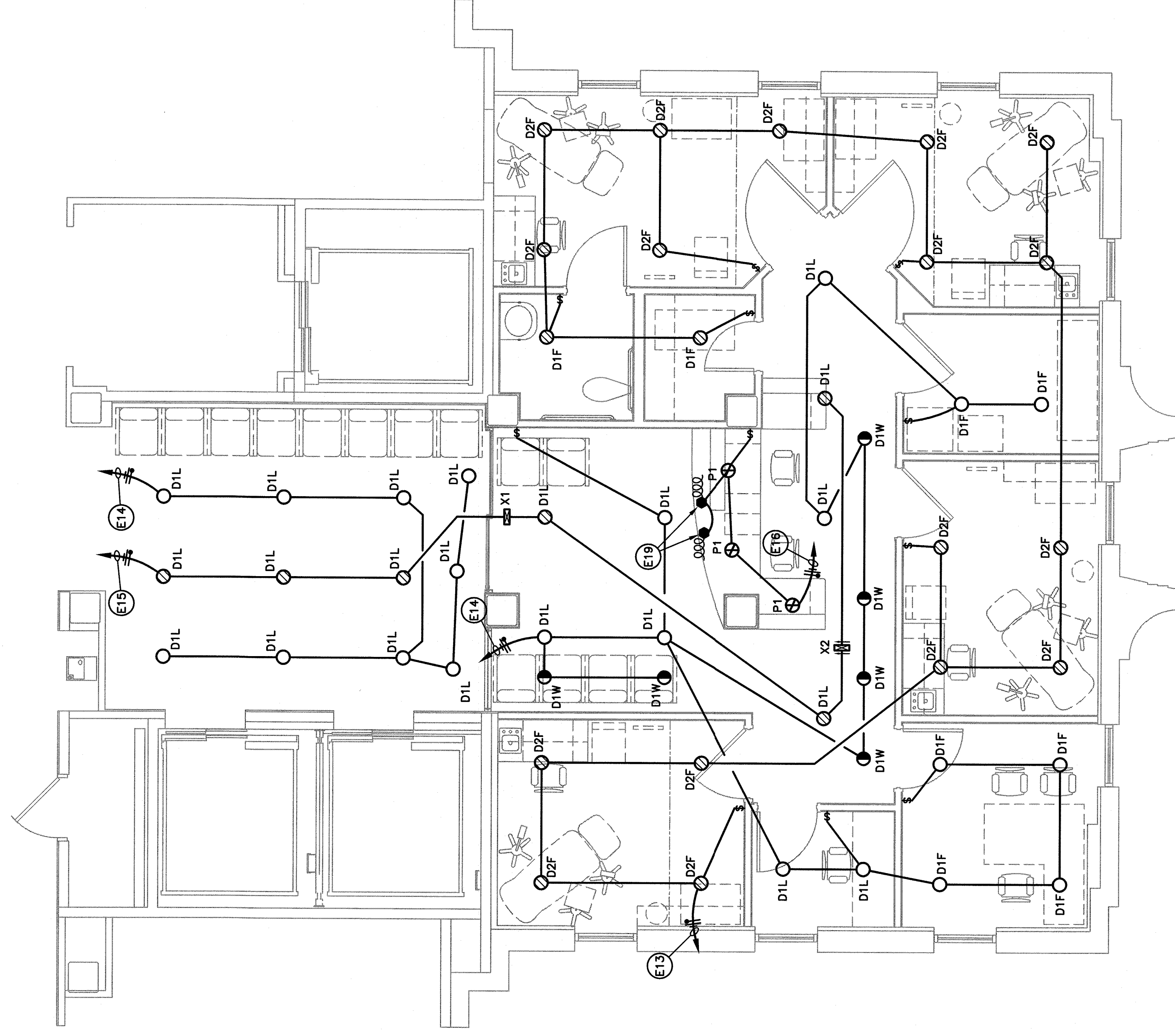


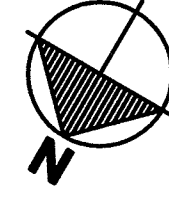
PARTIAL FLOOR PLAN – POWER



SCALE: $1/4"=1'-0"$



PARTIAL FLOOR PLAN - LIGHTING

SCALE: $1/A'' = 1' - 0''$

- ELECTRICAL NOTES:
- EXISTING
----- NEW WORK
- (E1) COORDINATE EXIST LOCATION OF ALL WIRING DEVICES WITH ARCHITECTURAL ELEVATIONS PRIOR TO ROUGH-IN.
- (E2) CONTRACTOR SHALL COORDINATE THE EXACT LOCATION AND REQUIREMENTS OF ALL EQUIPMENT WITH THE PROVIDER PRIOR TO ROUGH-IN. CONTRACTOR SHALL BE RESPONSIBLE FOR ALL ELECTRICAL REQUIREMENTS REQUIRED BY EQUIPMENT PROVIDER AND/OR EQUIPMENT DRAWINGS. PROVIDE COMPLETE AND OPERATIONAL SYSTEM.
- (E3) ELECTRICAL CONTRACTOR SHALL COORDINATE THE EXACT ELECTRICAL REQUIREMENTS OF ALL MECHANICAL EQUIPMENT WITH MECHANICAL CONTRACTOR PRIOR TO ROUGH-IN. ADJUST CIRCUITS AS REQUIRED.
- (E4) REFER TO MECHANICAL PLANS FOR CONTROL OF EXHAUST FANS, ETC. PROVIDE ALL ELECTRICAL REQUIREMENTS.
- (E5) CONTRACTOR SHALL BE RESPONSIBLE FOR MAKING ALL ELECTRICAL INSTALLATIONS IN CONFORMANCE WITH ALL APPLICABLE ELECTRICAL CODES OF ANY WORK PERFORMED ON EXISTING EQUIPMENT OR INSTALLATIONS.
- (E6) CONTRACTOR SHALL PROVIDE A TRUNK SYSTEM EXTENSION IN STRICT COMPLIANCE WITH NFPA 72 AND THE CONTRACTOR SHALL BE RESPONSIBLE FOR THE COMPLETE OPERATION SYSTEM. PROVIDE ALL DEVICES PER NFPA CODES BASED UPON OCCUPANCY TYPE BUILDING DETECTOR INDICATES ON PLANS OR NOT. INSTALLATION OF ANY AND ALL DETECTORS SHALL BE IN ACCORDANCE WITH THE DETECTOR MANUFACTURER'S INSTALLATION INSTRUCTIONS. CONTRACTOR WHO MAINTAINS A CURRENT EDWARDS SYSTEMS TECHNOLOGIES EST-3 DEALER AUTHORIZATION, CURRENT EDWARDS SYSTEMS TECHNOLOGIES FIREWORKS NETWORK CONNECTION, AND CURRENT EDWARDS SYSTEMS TECHNOLOGIES FIREWORKS NETWORK DEVICES PROGRAMMING SHALL INCORPORATE ESTABLISHED VISUAL DISPLAY AND AUDIO VERBAGE LABELING AND MESSAGING WHICH INCLUDE BUILDING NUMBER, FLOOR NUMBER, AND DETECTOR LOCATION. CONTRACTOR SHALL MAINTAIN THE SYSTEMS PERFORMANCE AND PAST PERFORMANCE IN THE INSTALLATION AND MAINTENANCE OF NO LESS THAN THREE (3) PREVIOUS EST-3/EST-3 NETWORKS INSTALLATIONS.
- (E7) EXTEND AND CONNECT TO EXISTING NORMAL POWER BRANCH CIRCUIT RETAINED FROM DEMOLITION. PROVIDE NEW CIRCUIT AS REQUIRED.
- (E8) COORDINATE EXIST LOCATION FOR TV OUTLET AND RECEPTACLE WITH ARCHITECT PRIOR TO DEMOLITION. PROVIDE NEW CIRCUIT AS REQUIRED.
- (E9) EXTEND AND CONNECT TO EXISTING EMERGENCY CRITICAL POWER BRANCH CIRCUIT RETAINED FROM DEMOLITION. PROVIDE NEW CIRCUIT AS REQUIRED.
- (E10) RE-INSTALL SPEAKERS REMOVED FROM DEMOLITION. CONNECT TO EXISTING CIRCUIT.
- (E11) PROVIDE CREST #4414 POWER SUPPLY, CREST #4325-1 DOME LIGHT AND A CREST #5700 EMERGENCY PULL STATION. PROVIDE A COMPLETE AND OPERATIONAL SYSTEM.
- (E12) ALL EXIT/EMERGENCY FIXTURES SHALL BE CONNECTED TO UNSWITCHED CONDUCTORS.
- (E13) COORDINATE EXIST LOCATIONS OF ALL LIGHTING FIXTURES WITH ARCHITECTURAL. REFLECTED CEILING PLANS.
- (E14) EXTEND AND CONNECT TO EXISTING EMERGENCY CRITICAL BRANCH LIGHTING CIRCUIT RETAINED FROM DEMOLITION. PROVIDE NEW CIRCUIT AS REQUIRED.
- (E15) EXTEND AND CONNECT TO EXISTING NORMAL POWER LIGHTING CIRCUIT RETAINED FROM DEMOLITION.
- (E16) EXTEND AND CONNECT TO EXISTING EMERGENCY LIFE SAFETY LIGHTING CIRCUIT RETAINED FROM DEMOLITION. PROVIDE NEW CIRCUIT AS REQUIRED.
- (E17) EXTEND AND CONNECT TO NEAREST 120V UNSWITCHED RECEPTACLE CIRCUIT.
- (E18) EXTEND AND CONNECT TO EXISTING EMERGENCY LIFE SAFETY CIRCUIT RETAINED FROM DEMOLITION. PROVIDE NEW CIRCUIT AS REQUIRED.
- (E19) RE-INSTALL SPECIAL SYSTEM DEVICES IN CEILING OF LOBBY.
- (E20) CONNECT TO BUILD-IN LIGHTS IN RECEPTION DESK AND SIGNAGE. COORDINATE EXACT LIGHTING REQUIREMENTS PRIOR TO ROUGH-IN.
- (E21) CONNECT TO LIFTS. COORDINATE EXIST REQUIREMENTS WITH LIFT PROVIDER PRIOR TO ROUGH-IN.
- (E22) COORDINATE EXIST LOCATION FOR TV OUTLET AND RECEPTACLE WITH ARCHITECT PRIOR TO ROUGH-IN.

[illegible]