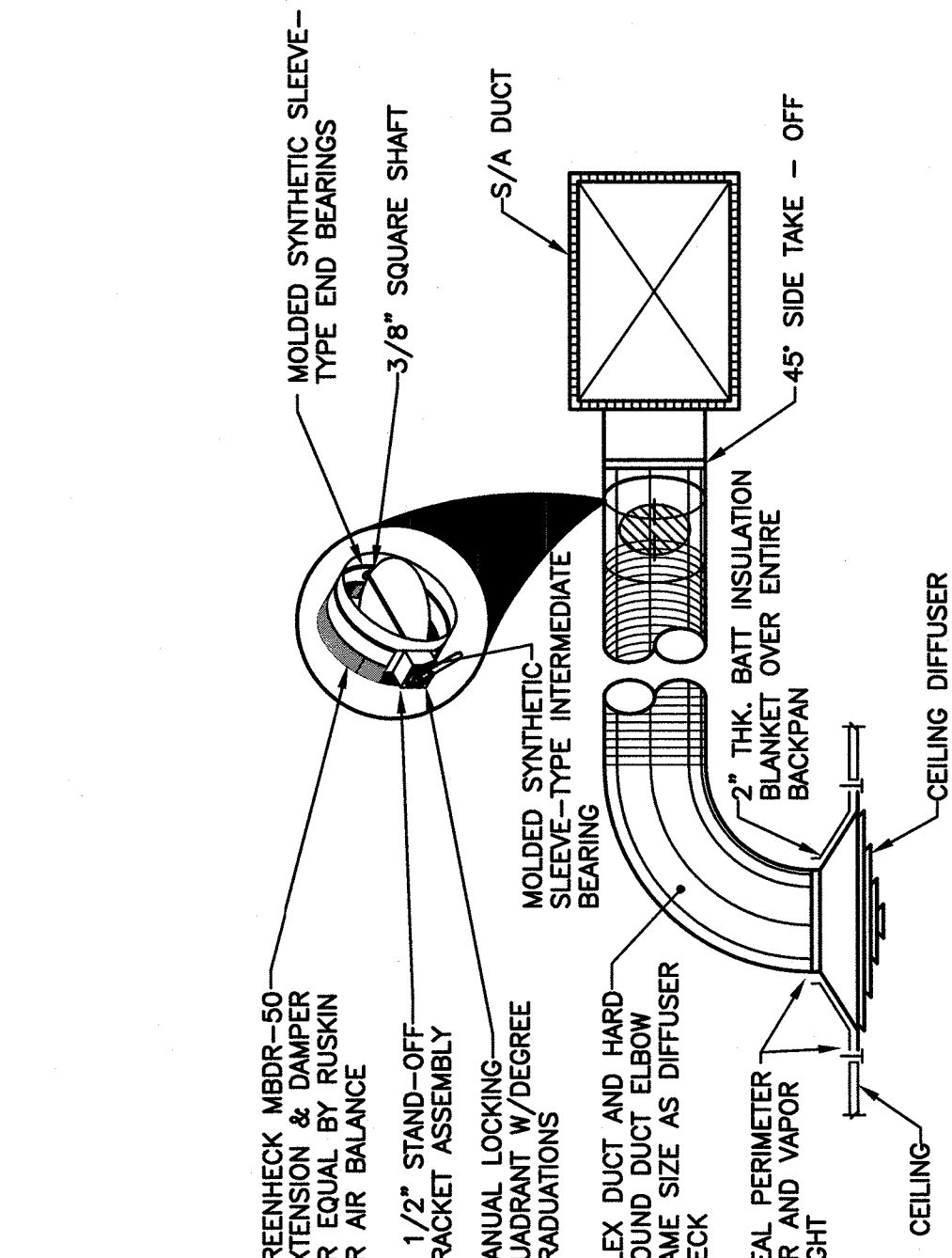


FAN COIL UNIT SCHEDULE										
FCU NO.	EXT S.F.	COOLING			HEATING			MANUFACTURER REMARKS		
		TOTAL MBH	SENS MBH	AR DB/WB	EW/WT	GPM	Δ P	TOTAL MBH	Δ P	EW/WT
2	400	20"	8.8	8.0	74.0/61.0	44/56	1.6	6.0	12.3	1.1
* POWER 277V/1φ - PROVIDE WITH 277V/24V TRANSFORMER. FIELD VERIFY EXTG FCU VOLTAGE PRIOR TO ORDER AND MATCH.										

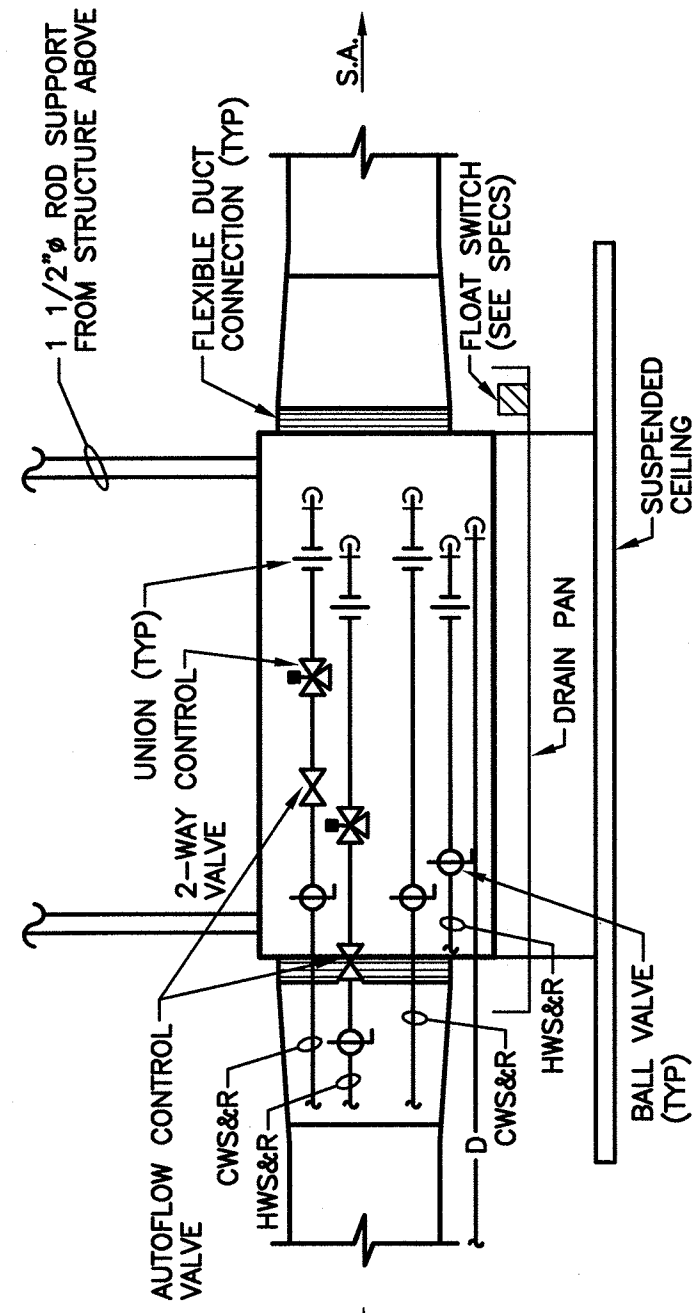
AIR DISTRIBUTION DEVICE SCHEDULE				
TYPE	DESCRIPTION	MOUNTING	MATERIAL	FINISH
D1	CEILING SUPPLY DIFFUSER	* T-BAR CEILING	STEEL	WHITE BAKED ENAMEL
D2	CEILING SUPPLY DIFFUSER	* T-BAR CEILING	STEEL	WHITE BAKED ENAMEL
G1	CEILING EXHAUST/RETURN GRILLE	* T-BAR CEILING	ALUMINUM	WHITE BAKED ENAMEL
G2	CEILING EXHAUST/RETURN GRILLE	* T-BAR CEILING	ALUMINUM	WHITE BAKED ENAMEL

* PROVIDE TITUS RAPID-MOUNT FRAME FOR ALL AIR DEVICES MOUNTED IN HARB CEILINGS. RE: ARCHITECTURAL REFLECTED CEILING PLAN.



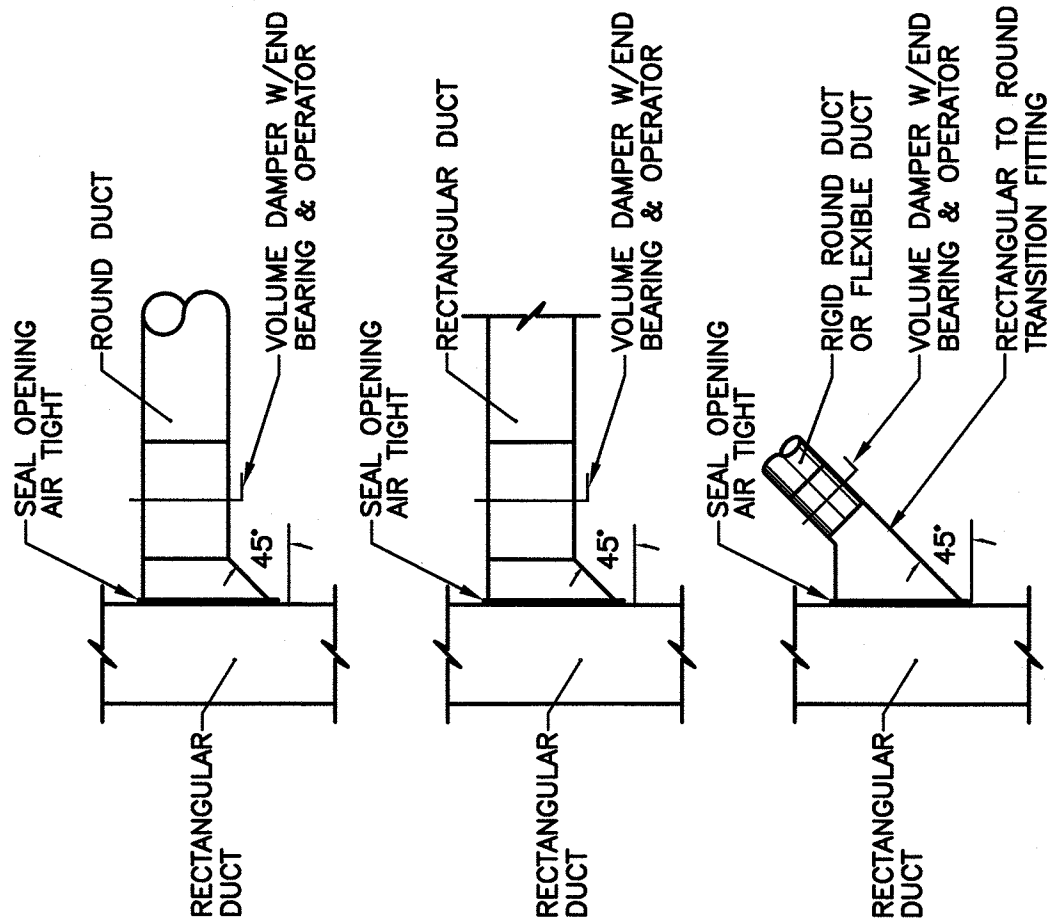
A DETAIL -- DIFFUSER CONNECTION

NO SCALE



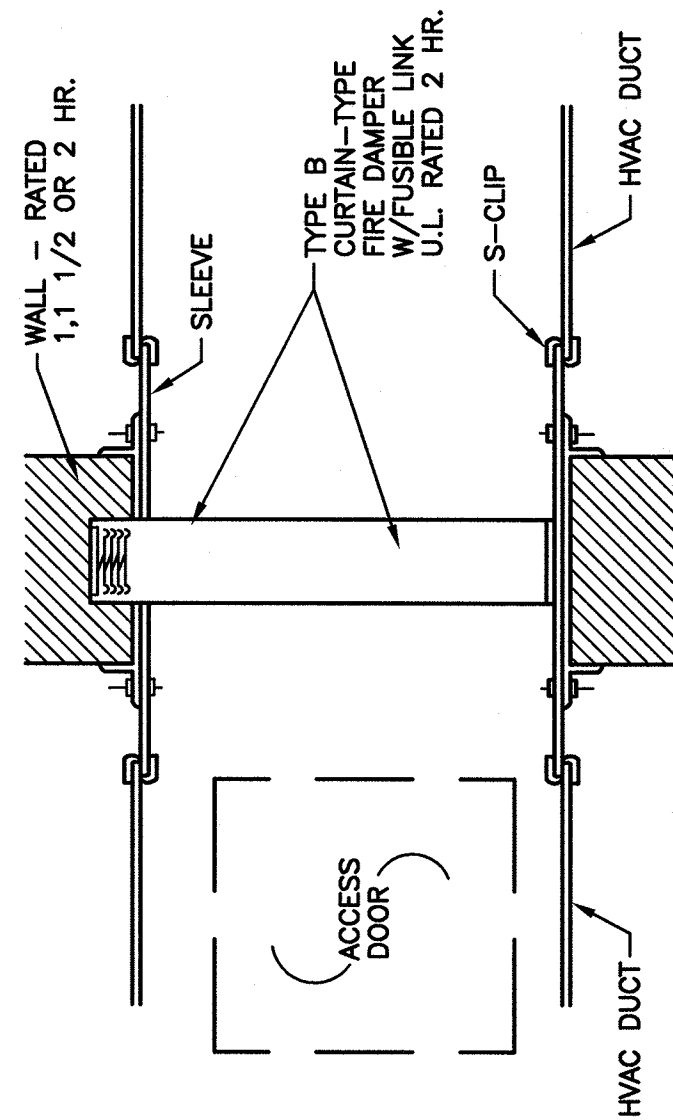
E DETAIL -- FAN COIL UNIT

NO SCALE



B DETAIL -- DUCT TAKE-OFFS

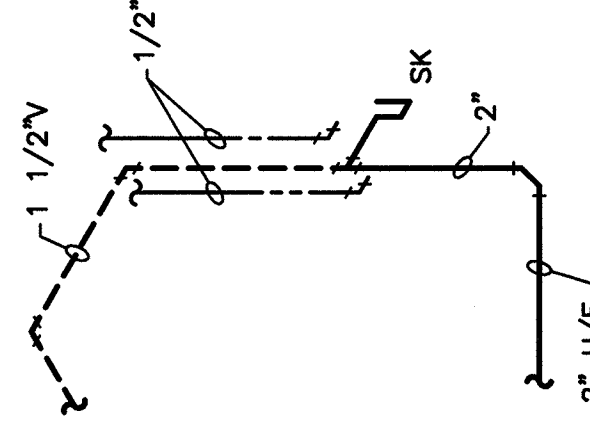
NO SCALE



C DETAIL -- FIRE DAMPER

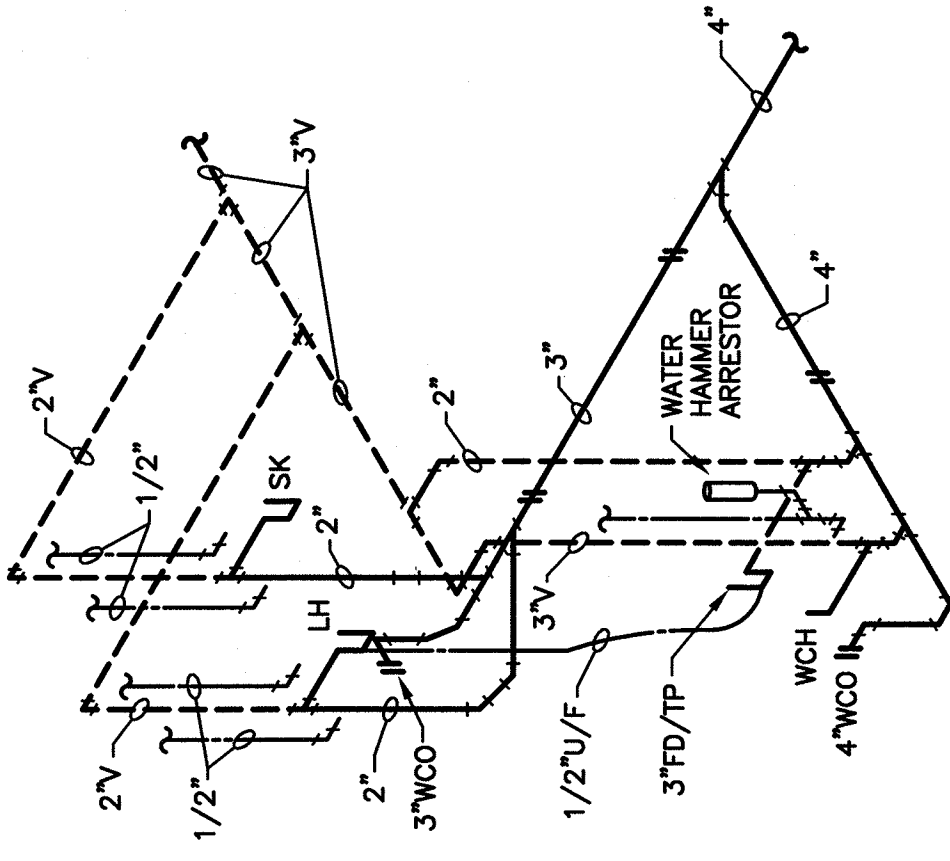
NOTE: FIRE WALLS RATED 1, 1 1/2 OR 2 HOURS.

NO SCALE



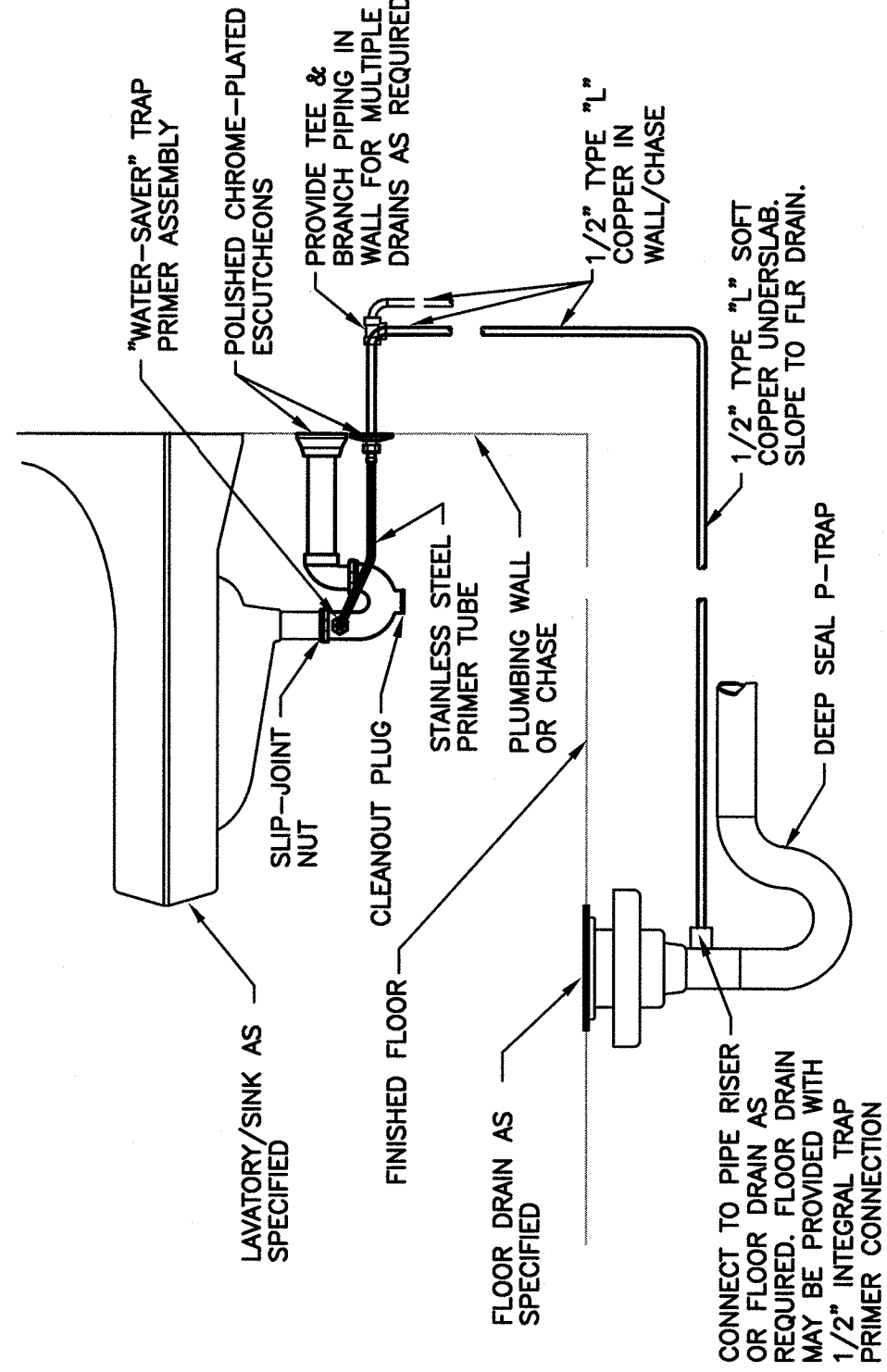
P1 PLUMBING RISER

NO SCALE



P2 PLUMBING RISER

NO SCALE



D DETAIL -- "WATER-SAVER" TRAP PRIMER ASSEMBLY (TP)

NO SCALE

MECHANICAL LEGEND	
SYMBOL	DESCRIPTION
---	SUPPLY AIR DIFFUSER OR DUCT
---	RETURN AIR GRILLE, REGISTER OR DUCT
---	EXHAUST AIR GRILLE, REGISTER OR DUCT
---	ADJUSTABLE SPLITTER TEE W/TURNING VANES (S/A ONLY)
---	DUCT TRANSITION -- CONCENTRIC, ECCENTRIC
---	FLEXIBLE DUCT
---	UNED DUCTWORK
---	ELBOW W/DOUBLE THICKNESS VANES
---	MANUAL VOLUME DAMPER
---	THERMOSTAT
---	FIRE DAMPER -- HORIZONTAL AIR FLOW
---	FIRE DAMPER -- VERTICAL AIR FLOW
---	DOMESTIC COLD WATER (CW)
---	DOMESTIC HOT WATER (HW)
---	SANITARY SEWER OR WASTE (SS OR W)
---	SANITARY VENT (V)
---	CLEAN OUT -- WALL (WCO)/PIPE (CO)
---	CONNECT TO EXISTING
S/A	SUPPLY AIR
R/A	RETURN AIR
E/A	EXHAUST AIR
FD	FLEXIBLE DUCT
HWC	HEATING WATER COIL
EF	EXHAUST FAN
---	FLOOR DRAIN/TRAP PRIMER/TRAP GUARD
---	BALL VALVE
---	GATE VALVE
U/F	UNDERFLOOR
U/C	UNDERCOUNTER

CONSULTANTS:	
<p>P+A</p> <p>PURPLE & ASSOCIATES CONSULTING ENGINEERS 701 TEXAS STREET SHREVEPORT, LA 71101</p> <p>318 425 4500 • fax 318 222 8564 purple@purple.net • PA-12222 Louisiana Registered Professional Engineer REC. No. 268-67 EXPIRATION DATE 12/31/12</p>	
Date	

ARCHITECT/ENGINEERS:	
<p>Alliance</p> <p>3616 Masonic Drive Alexandria, LA 71301 Ph: 318.445.3151 Fx: 318.445.3988 Em: adg@adgllc.net</p>	
Approved Project Director	

MECHANICAL SCHEDULES AND DETAILS	
Project Title	WOUND HEALING CENTER OF EXCELLENCE VETERAN AFFAIRS MEDICAL CENTER
Location	LA
Date	08/012
Checked	TOS
Drawn	BNY
Dwg Number	M201
Dwg of	

Office of Construction and Facilities Management	
Project Number	VA256-C-187-C2464
Building Number	7
Drawing Number	M201
Dwg of	