






-  ACM Pipe Insulation
-  ACM Floor Tile & Mastic
-  ACM Linoleum and Mastic
-  ACM Floor Tile Mastic under NON-ACM Floor Tile
-  ACM Fire Door

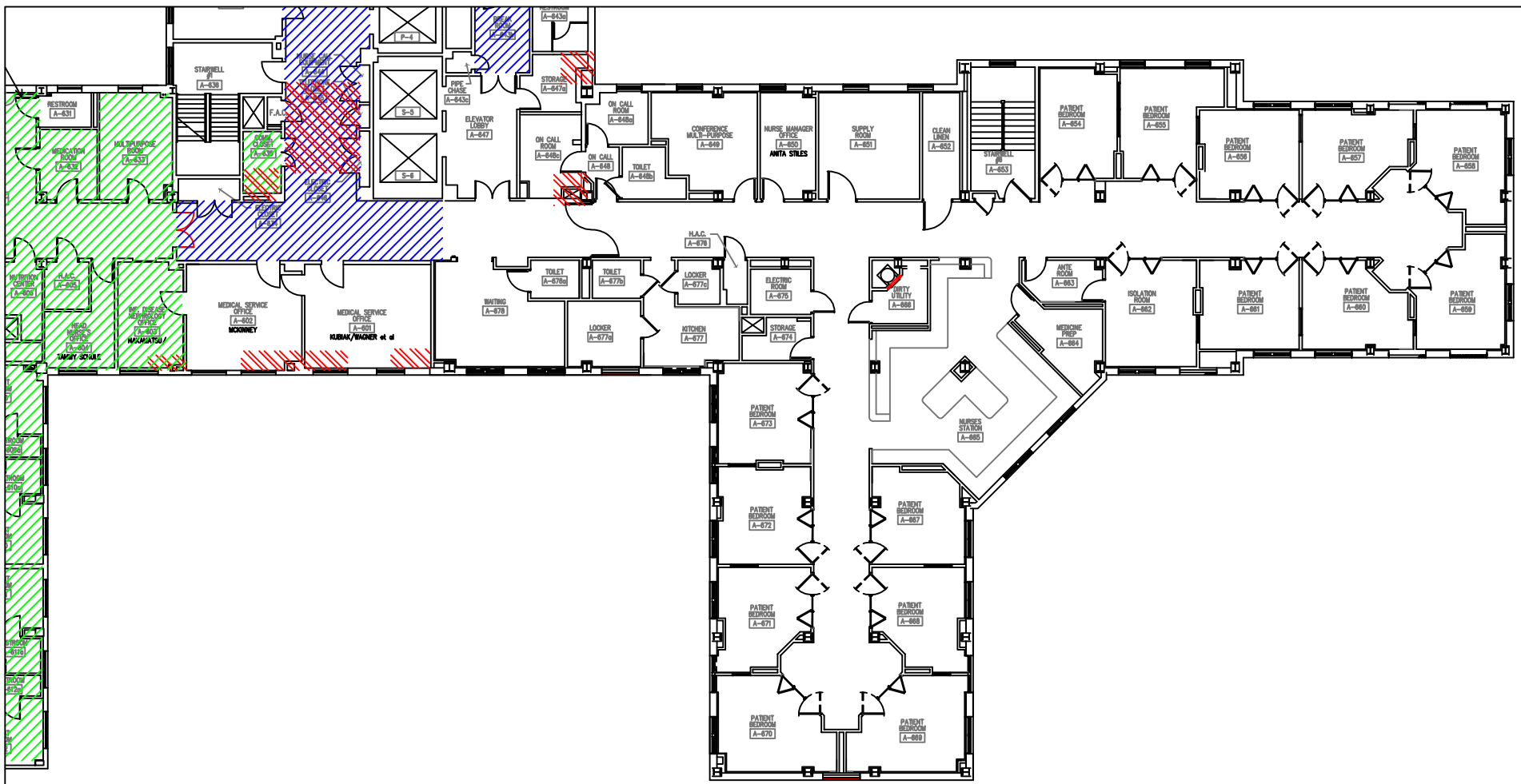
-  ACM Sink Mastic/Undercoating
-  ACM Duct Insulation




Louisville VAMC

Building 1 - 4th, Floor, West
Asbestos Sample Locations

Douglas W. Peters and Associates, Inc.
Environmental Health Management
3701 Taylorsville Road, Suite 1
Louisville, Kentucky 40220
(502) 454-8530 Fax (502) 454-8528





-  ACM Pipe Insulation
-  ACM Floor Tile & Mastic
-  ACM Floor Tile Mastic under NON-ACM Floor Tile



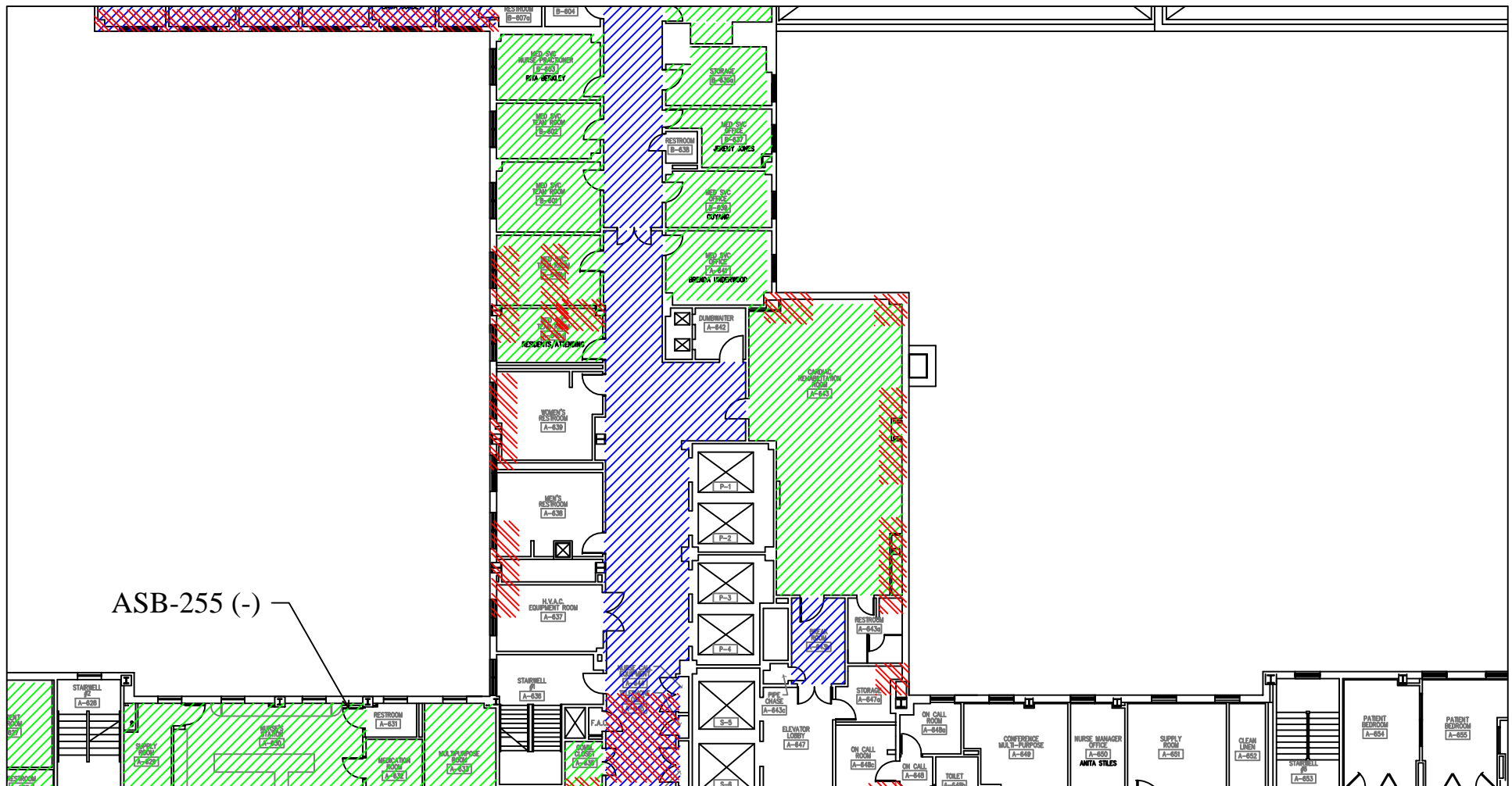
ACM Fire Door


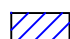
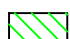
Louisville VAMC

Building 1 - 6th Floor, North
Asbestos Sample Locations

Douglas W. Peters and Associates, Inc.
Environmental Health Management
3701 Taylorsville Road, Suite 1
Louisville, Kentucky 40220
(502) 454-8530 Fax (502) 454-8528





-  ACM Pipe Insulation
-  ACM Floor Tile & Mastic
-  ACM Floor Tile Mastic under NON-ACM Floor Tile



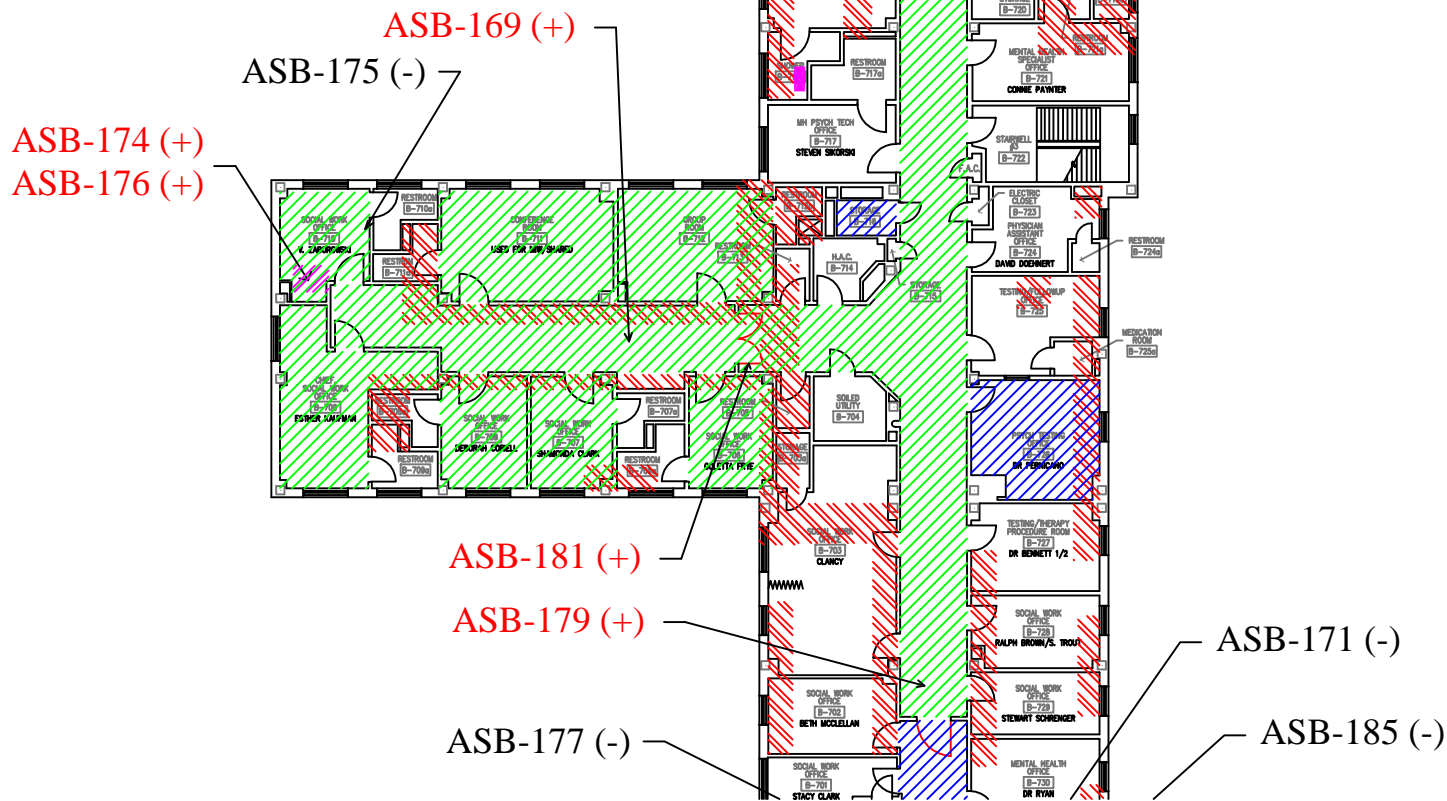
ACM Fire Door






Louisville VAMC


Building 1 - 6th Floor, Center
Asbestos Sample Locations

Douglas W. Peters and Associates, Inc.
Environmental Health Management
3701 Taylorsville Road, Suite 1
Louisville, Kentucky 40220
(502) 454-8530 Fax (502) 454-8528





-  ACM Pipe Insulation
-  ACM Floor Tile & Mastic
-  ACM Floor Tile Mastic under NON-ACM Floor Tile
-  ACM Duct Insulation
-  ACM Fire Door

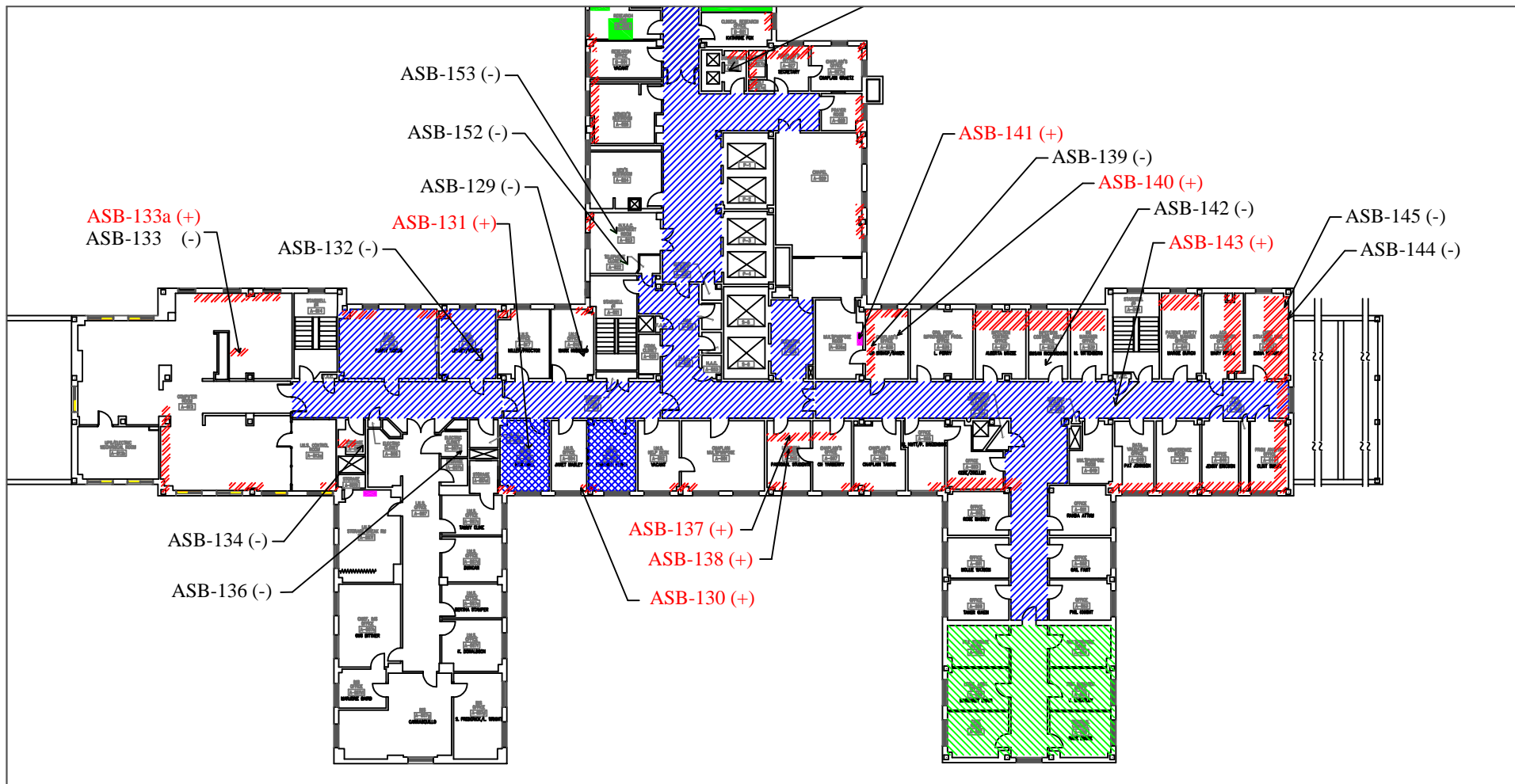
-  ACM Sink Mastic/Undercoating
-  ACM Duct Insulation





Louisville VAMC


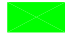
Building 1 - 7th Floor, West
Asbestos Sample Locations

Douglas W. Peters and Associates, Inc.
Environmental Health Management
3701 Taylorsville Road, Suite 1
Louisville, Kentucky 40220
(502) 454-8530 Fax (502) 454-8528





-  ACM Pipe Insulation
-  ACM Floor Tile & Mastic
-  ACM Floor Tile with NON-ACM Mastic underneath
-  ACM Floor Tile Mastic under NON-ACM Floor Tile

-  ACM Sink Mastic/Undercoating
-  ACM Counter Tops

Douglas W. Peters and Associates, Inc.
Environmental Health Management
 3701 Taylorsville Road, Suite 1
 Louisville, Kentucky 40220
 (502) 454-8530 Fax (502) 454-8528



Louisville VAMC

Building 1 - 8th Floor, East
 Asbestos Sample Locations