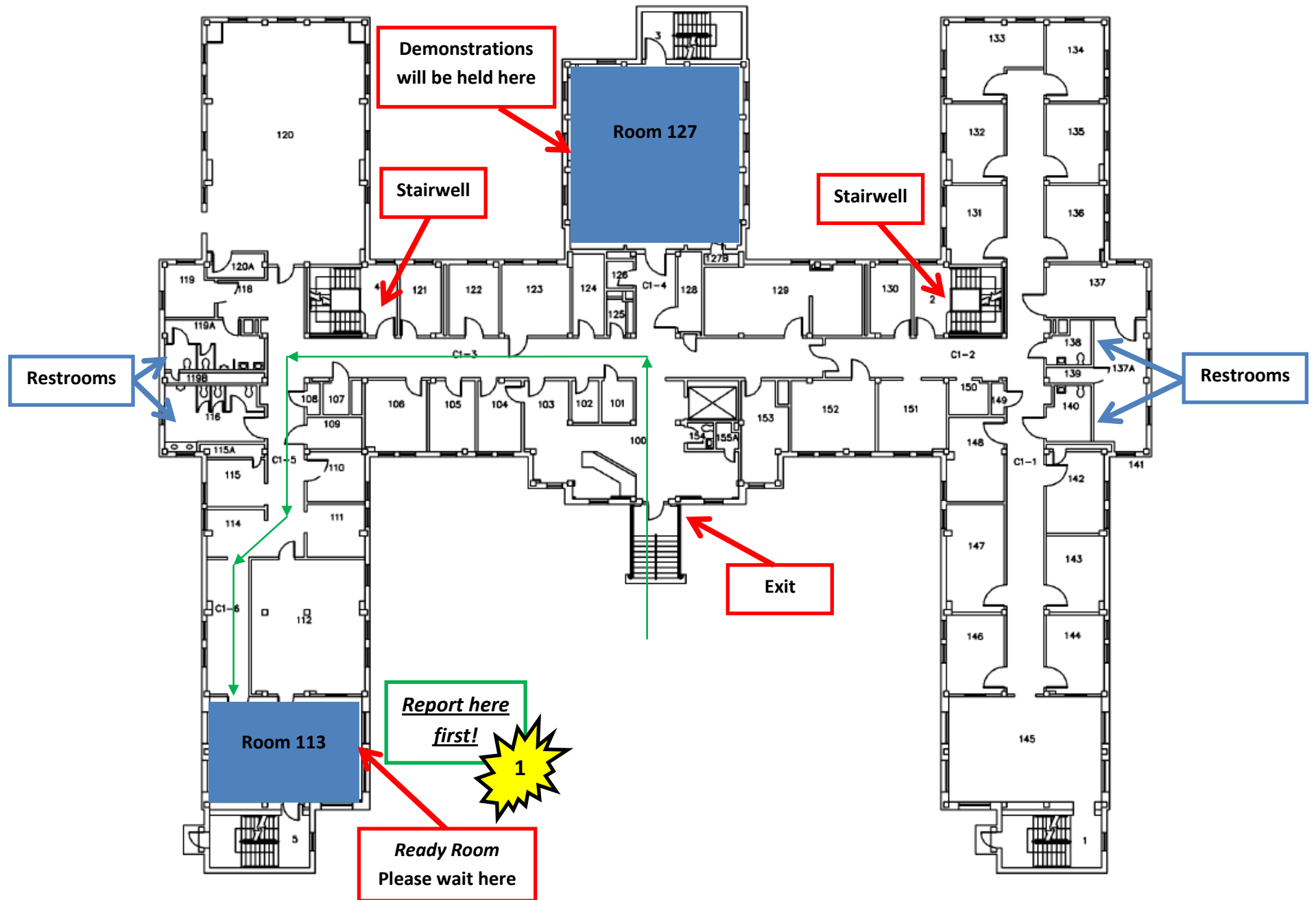
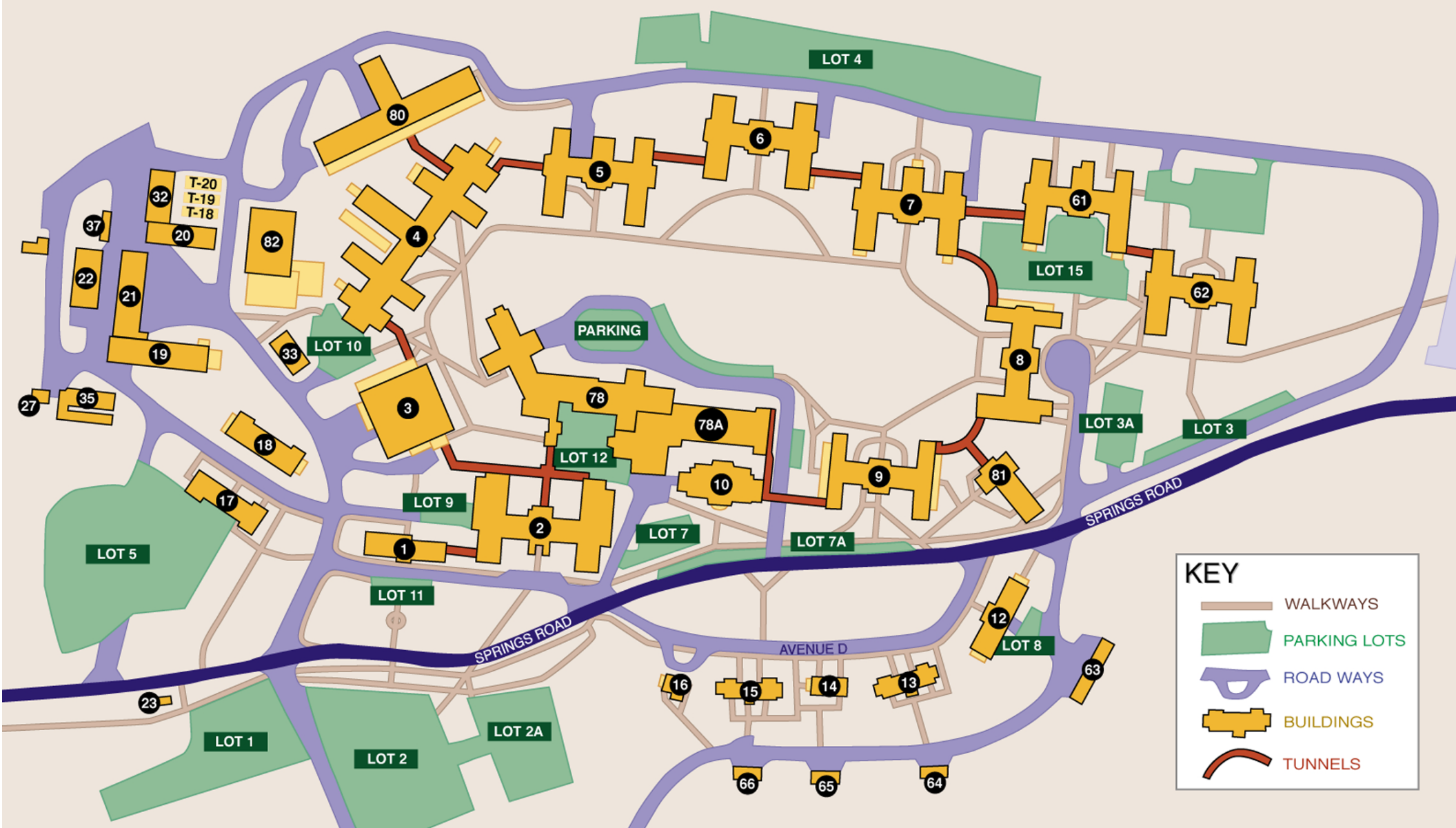


# Bedford Building 61





Acquisition & Material Mgmt. Svc.	80	Food & Nutriion Service	3	IPCC	6	Rehabilitation Medicine Service	80
Admitting	78	Domiciliary	7	Library Service	10	Reproduction	4
Administrative Offices	1	Education	9	Mail Room	78	Research Service	17
Agent Cashier	78	Engineering Service	80	Medical Administration Service	78	Resolution Management	7
Ambulatory Care Service	78	Facilities Management Service	80	NAGE	3	Social Work Service	9
Canteen	78A	Fiscal Service	33	Nursing Home Care	4/2	Swimming Pool	82
Chapel	81	Garage-Grounds	32	Nursing Service	9	Theater	78A
Civil Rights Officer	78	Geriatrics	4/2	Patient Advocate	78	Warehouse	21
Clinical Lab Service	2	GRECC	18	Pharmacy	78	Veterans Benefits Counselor	78
Community Care Service	9	Gymnasium	82	Police Service	78	VISN 1 Regional Offices	61
CMOP	8	Hospital Director	1	Psychology	9	Voluntary Service	61
Credit Union	78	Human Resource Mgmt. Service	1	Psychiatry	9		
Decision Support Service	8	HSRD	70	Radiology	2		
Dental Service	2	Information Resource Mgmt.	3	Recreation	61		