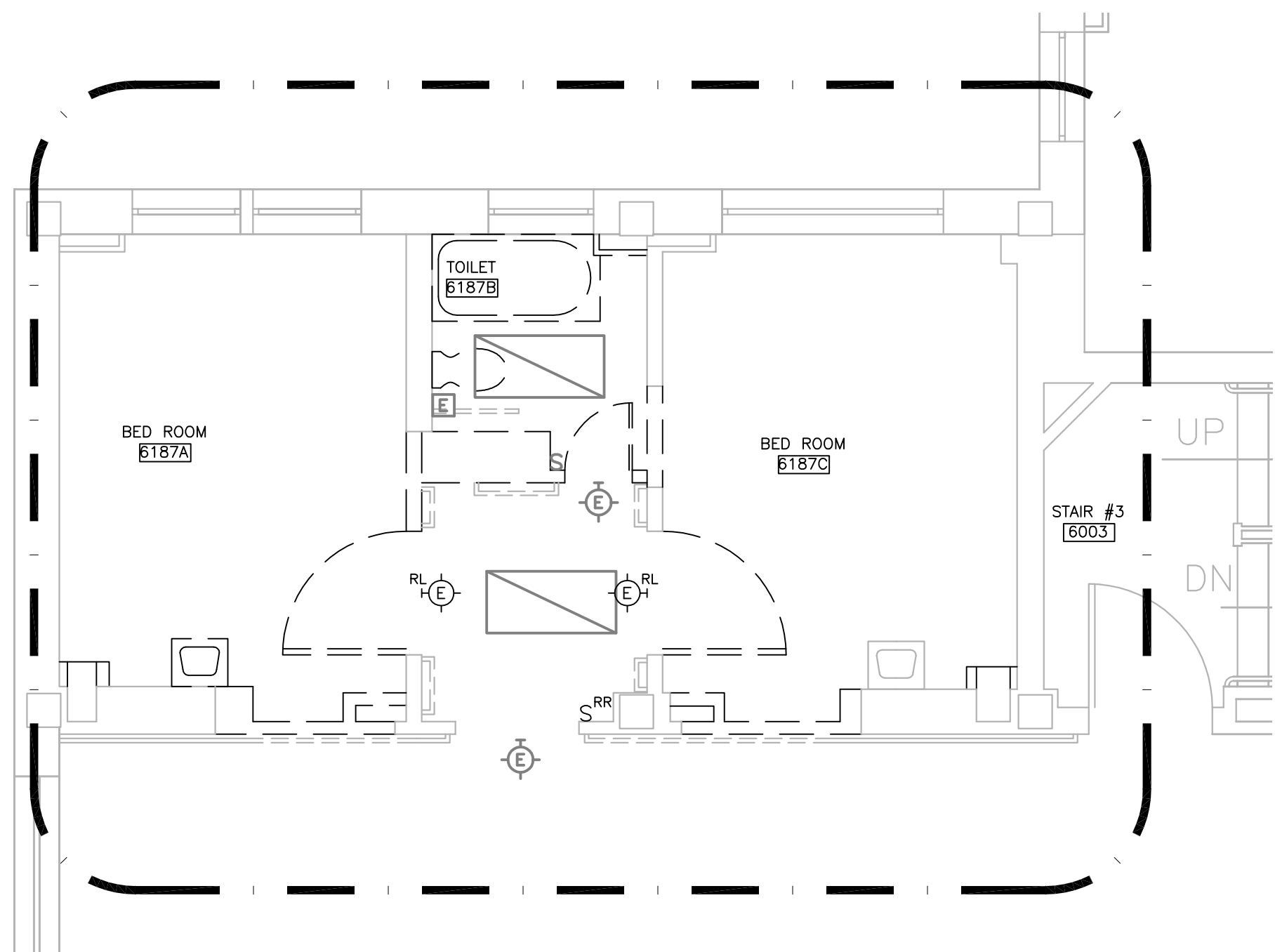
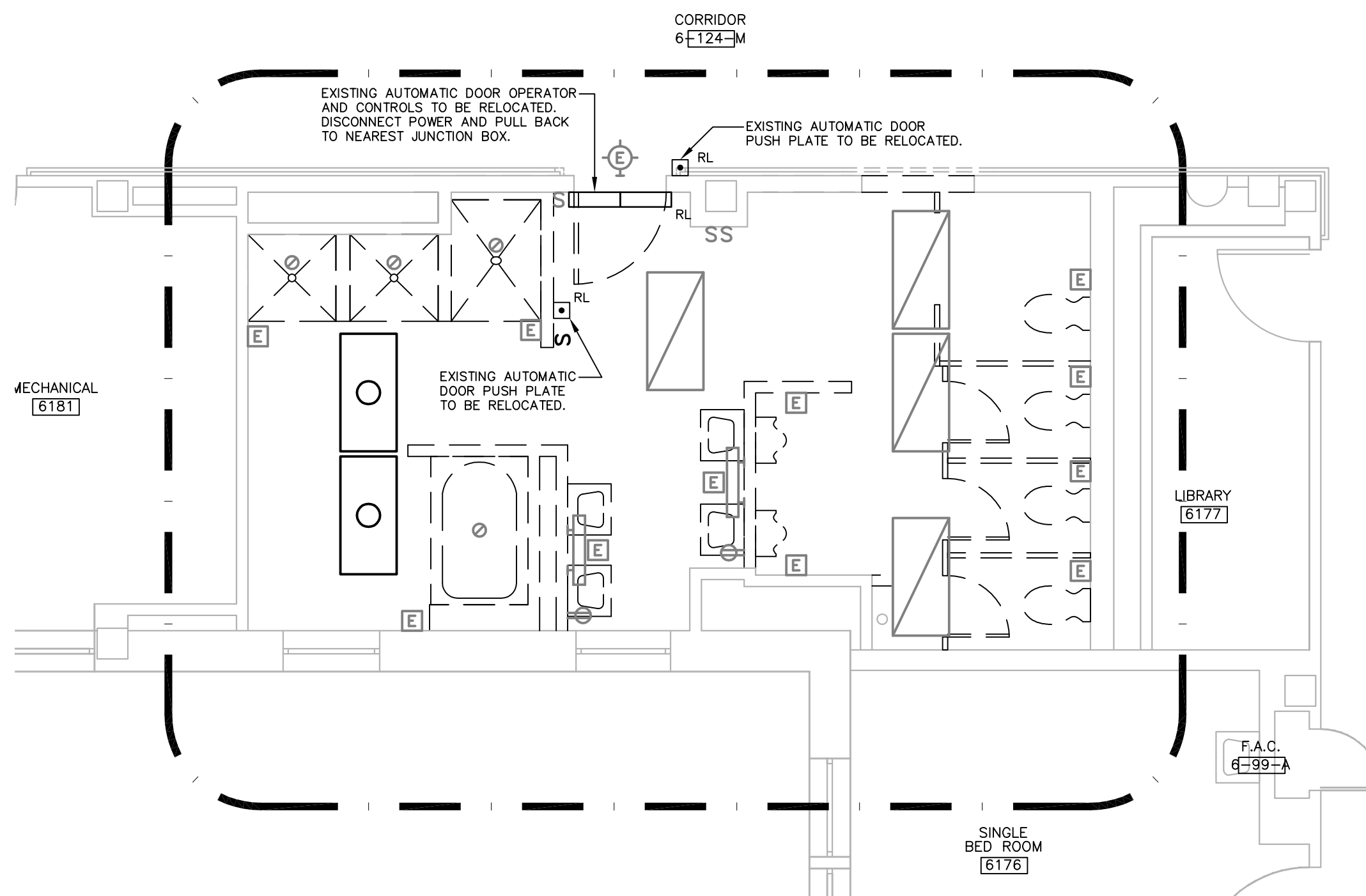


three inches = one foot  
one and one half inches = one foot  
one inch = one foot  
three quarters inch = one foot  
one half inch = one foot  
three eighths inch = one foot  
one quarter inch = one foot  
one eighth inch = one foot



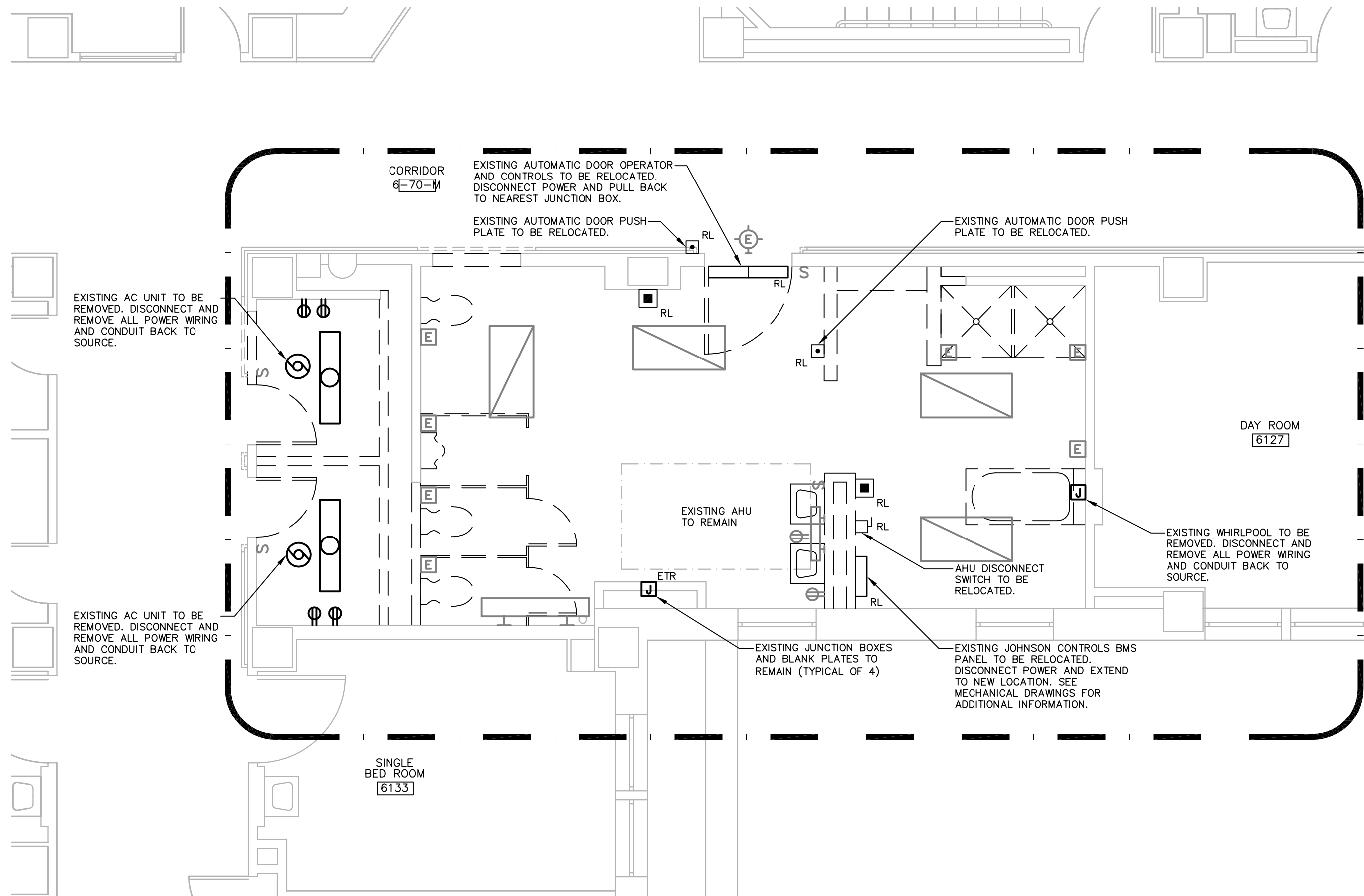
NOTE:  
1. UNLESS OTHERWISE NOTED BY SUBSCRIPT 'ETR' ALL EXISTING DEVICES TO BE REMOVED. SEE DWG. E103 FOR RELOCATED (RL) DEVICE LOCATIONS.

1 BUILDING 2 - (SOW 4) PARTIAL SIXTH FLOOR ELECTRICAL DEMOLITION PLAN  
SCALE: 1/4"=1'0"



NOTE:  
1. UNLESS OTHERWISE NOTED BY SUBSCRIPT 'ETR' ALL EXISTING DEVICES TO BE REMOVED. SEE DWG. E103 FOR RELOCATED (RL) DEVICE LOCATIONS.

2 BUILDING 2 - (SOW 4) PARTIAL SIXTH FLOOR ELECTRICAL DEMOLITION PLAN  
SCALE: 1/4"=1'0"

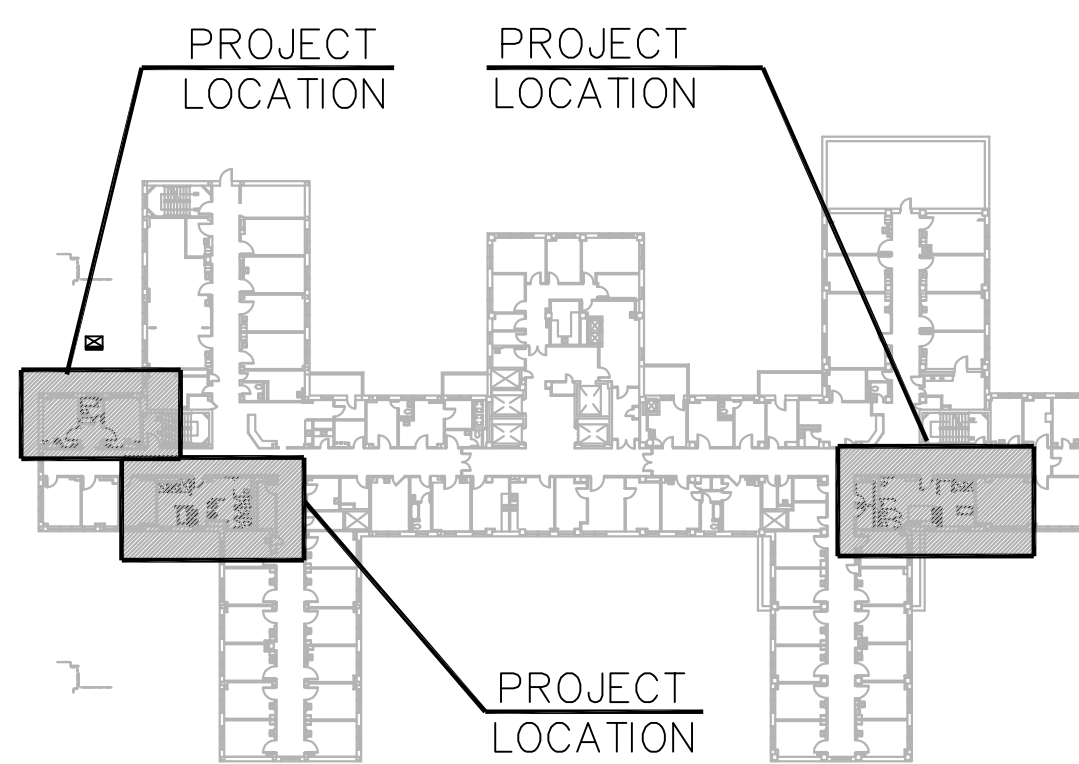


NOTE:  
1. UNLESS OTHERWISE NOTED BY SUBSCRIPT 'ETR' ALL EXISTING DEVICES TO BE REMOVED. SEE DWG. E103 FOR RELOCATED (RL) DEVICE LOCATIONS.

2 BUILDING 2 - (SOW 3) PARTIAL SIXTH FLOOR ELECTRICAL DEMOLITION PLAN  
SCALE: 1/4"=1'0"

#### GENERAL ELECTRICAL DEMOLITION NOTES

- UNLESS NOTED OTHERWISE REMOVAL OF DEVICES SHALL BE COMPLETE INCLUDING BOXES, BRACKETS, HANGERS AND BRANCH CIRCUIT WIRING BACK TO SOURCE PANELBOARD OR LAST ACTIVE ACTIVE DEVICE TO REMAIN (EXCEPT WHERE NOTED).
- CONTRACTOR SHALL BE RESPONSIBLE FOR LEGAL DISPOSAL OF MERCURY-CONTAINING LAMPS AND PCB BALLASTS.
- CONTRACTOR SHALL BE RESPONSIBLE FOR STORAGE AND HANDLING OF EXISTING TO BE RELOCATED EQUIPMENT.
- CONTRACTOR SHALL MODIFY EXISTING CIRCUITS, WHEN EXISTING DEVICES ARE REMOVED, AS REQUIRED TO MAINTAIN CIRCUIT CONTINUITY.
- THIS PLAN IS DIAGRAMMATIC AND NOT INTENDED TO DEPICT THE ENTIRE SCOPE OF ELECTRICAL DEMOLITION. ADDITIONAL DEMOLITION AND MODIFICATION WORK NOT SHOWN SHOULD BE ANTICIPATED.
- REFER TO DRAWING E300 FOR SYMBOL LIST.
- UNLESS OTHERWISE NOTED, EXISTING FIRE ALARM DEVICES ARE TO BE REMOVED BACK TO NEXT DEVICE DEVICE SCHEDULED TO REMAIN OR OUTSIDE OF THE AREA OF WORK. EXTEND CIRCUITS WITH WIRING TO MATCH EXISTING GLASS AND STYLE AS REQUIRED TO MAINTAIN CONTINUITY OF CIRCUITS UPSTREAM AND DOWNSTREAM OF THE WORK AFFECTED BY DEMOLITION. PROTECT EXISTING DEVICES DURING CONSTRUCTION. TAKE DEVICE OFF-LINE IF NECESSARY. COORDINATE BYPASSING AND REACTIVATION OF THE DEVICE WITH THE OWNER.
- DEMOLITION IS TO BE PERFORMED IN A PHASED FASHION AND PERFORMED TO MAINTAIN EXISTING SYSTEMS IN AREAS REMAINING OPERATIONAL. IT IS THE CONTRACTORS RESPONSIBILITY TO COORDINATE DISRUPTION OF SYSTEMS OR CIRCUITS AND TO INVESTIGATE ALL CIRCUITING AND DEVICES SCHEDULED FOR REMOVAL. PROVIDE TEMPORARY MEASURES TO MAINTAIN EXISTING SYSTEMS AND CIRCUITS AS REQUIRED.



BUILDING 2-SIXTH  
KEY PLAN  
SCALE: N.T.S.

CONSULTANTS:		ARCHITECT/ENGINEERS:		Drawing Title ELECTRICAL DEMOLITION PLANS SoW 3 + 4- BLIND CENTER EAST, WEST WINGS	Project Title WOMEN VETERANS PRIVACY IMPROVEMENTS	Project Number 689-11-110 Building Number 6	Office of Construction and Facilities Management  Department of Veterans Affairs
 1611 Middle Street Middletown, CT 06457 Tel: 860/332-0182 Fax: 860/332-1788 CES-201124030		 HEALTHCARE ARCHITECTS INC. 64 GOTHIC STREET, SUITE 1 NORTHAMPTON, MASSACHUSETTS 01060		Approved Project Director:	Location VAMC WEST HAVEN - WEST HAVEN, CONNECTICUT	Drawing Number ED103	
Revisions		Date		Date 10/31/2012	Checked JB	Drawn RSM	