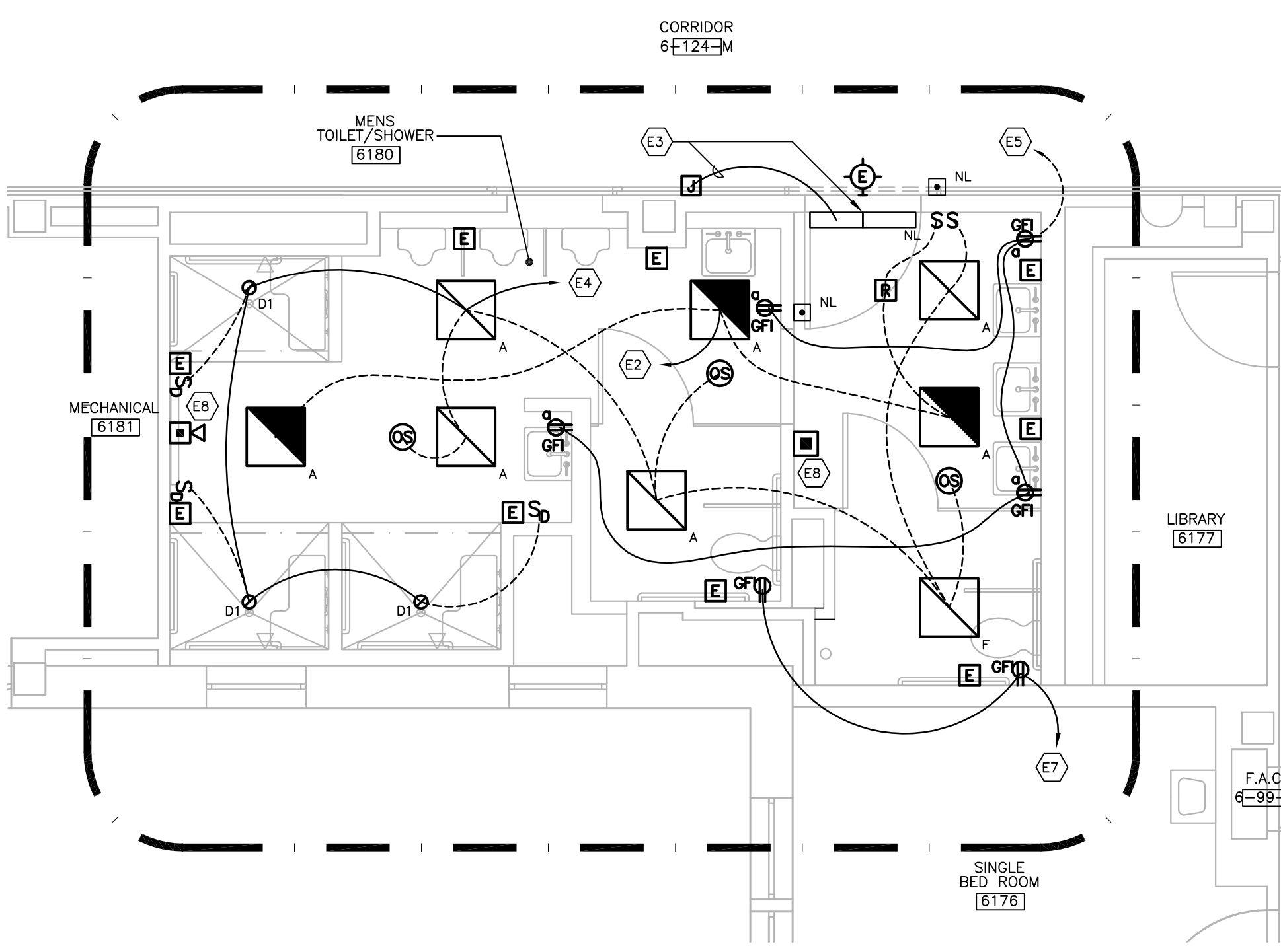


1 BUILDING 2 - (SOW 4) PARTIAL SIXTH FLOOR ELECTRICAL PLAN
SCALE: 1/4"=1'0"



2 BUILDING 2 - (SOW 4) PARTIAL SIXTH FLOOR ELECTRICAL PLAN
SCALE: 1/4"=1'0"

GENERAL ELECTRICAL POWER NOTES

1. ALL NEW CIRCUITS SHALL BE 2#12, #12G, 3/4"C., TO NEW 20A-1P CIRCUIT BREAKER IN PANEL INDICATED UNLESS OTHERWISE NOTED.
2. ALL 120VAC BRANCH CIRCUITS EXCEEDING 150' LENGTH SHALL BE INCREASED TO 2#10, #10G, 3/4"C., UNLESS OTHERWISE NOTED.
3. ALL RECEPTACLES WITHIN 6' OF SINKS SHALL BE GFI.
4. ALL DEVICES SHALL BE LABELED WITH SOURCE PANEL AND CIRCUIT NUMBER.
5. REFER TO DRAWING E300 FOR SYMBOLS LIST.
6. REFER TO ARCHITECTS REFLECTED CEILING PLAN FOR EXACT LOCATION OF CEILING MOUNTED ELECTRICAL DEVICES.
7. DOWNSTREAM RECEPTACLES SHALL NOT BE CONNECTED TO LOAD SIDE OF ANY UPSTREAM GFI RECEPTACLE.

FIRE ALARM NOTES

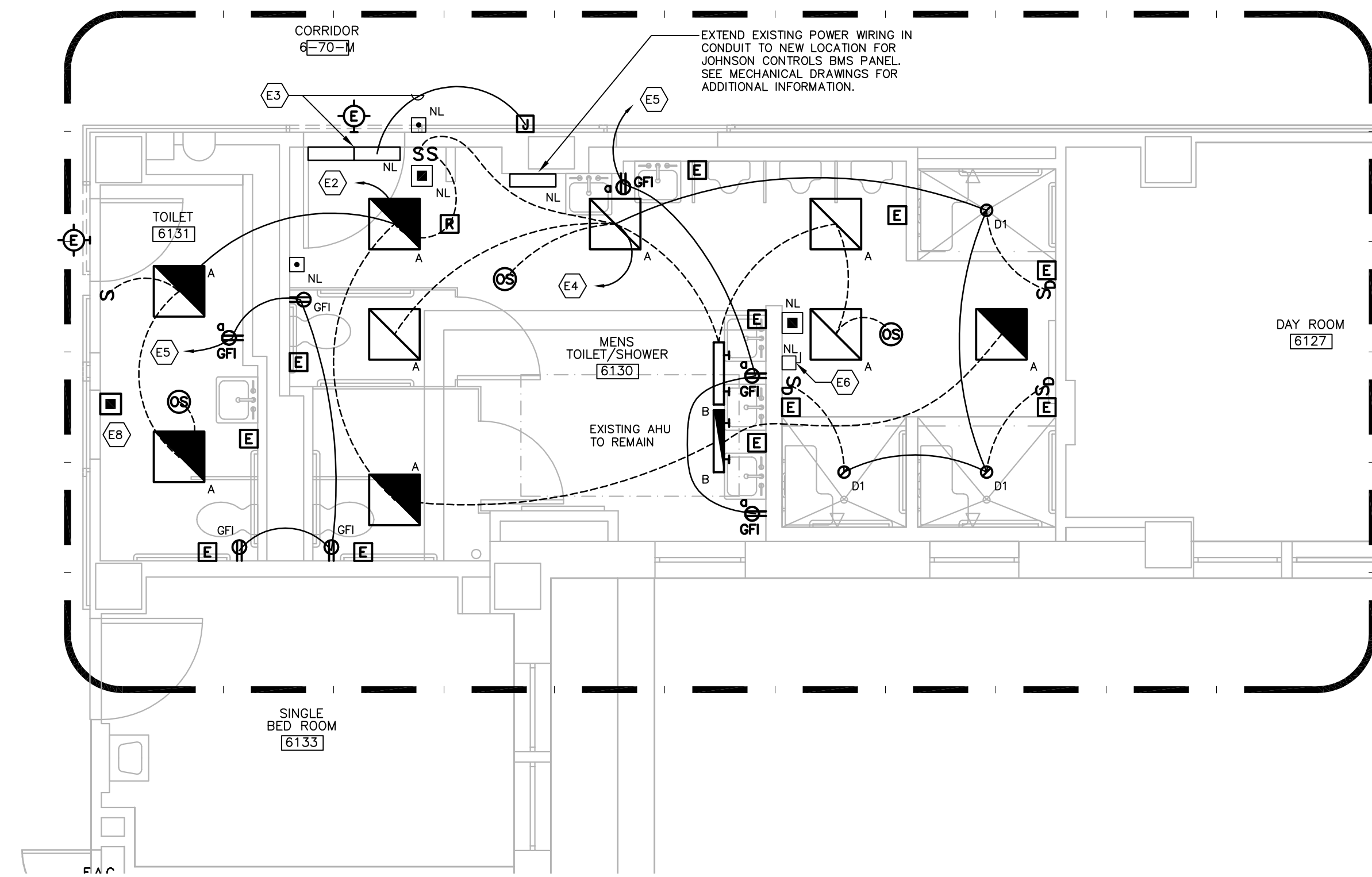
1. FIRE ALARM DEVICES AND WIRING TO MATCH EXISTING SYSTEM. COORDINATE WIRING AND POWER REQUIREMENTS WITH THE EXISTING SYSTEM CONFIGURATION.

GENERAL NOTES - LIGHTING

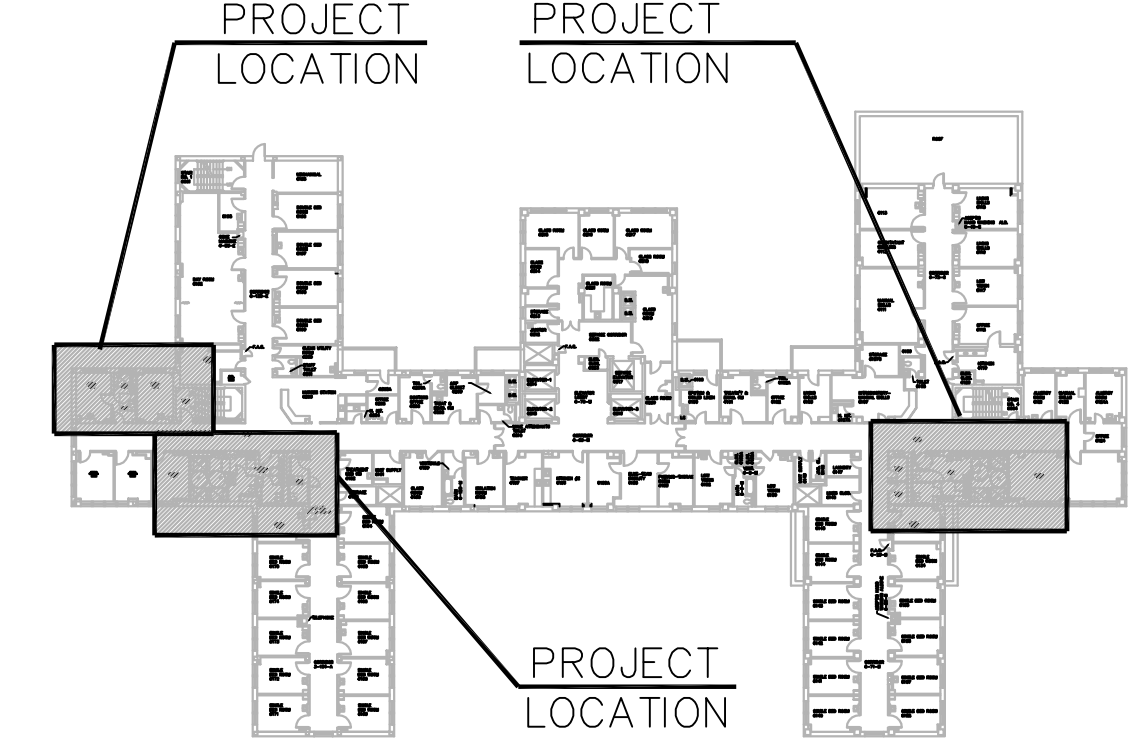
1. ALL NEW CIRCUITS SHALL BE 2#12, #12G, 3/4"C., TO NEW 20A-1P CIRCUIT BREAKER IN PANEL INDICATED UNLESS NOTED OTHERWISE.
2. EXTENSION OF EXISTING CIRCUITS SHALL MATCH EXISTING WIRING UNLESS NOTED OTHERWISE. MINIMUM CIRCUIT REQUIREMENTS ARE 2#12, #12G, 3/4"C.
3. ALL 120VAC BRANCH CIRCUITS EXCEEDING 150' LENGTH SHALL BE INCREASED TO 2#10, #10G, 3/4"C., UNLESS NOTED OTHERWISE.
4. EMERGENCY LIGHTING AND EXIT SIGNS SHALL BE WIRED TO LINE SIDE OF LOCAL LIGHTING BRANCH CIRCUIT, AHEAD OF ALL SWITCHING DEVICES.
5. REFER TO ARCHITECTS REFLECTED CEILING PLAN FOR EXACT LOCATIONS OF CEILING MOUNTED DEVICES.
6. REFER TO DRAWING E300 FOR LIGHT FIXTURE SCHEDULE AND SYMBOLS LIST.

ELECTRICAL KEYNOTES

- E1 CONNECT TO NEAREST NORMAL LIGHTING CIRCUIT AHEAD OF ALL SWITCHING.
- E2 CONNECT TO NEAREST EMERGENCY LIGHTING CIRCUIT AHEAD OF ALL SWITCHING.
- E3 EXTEND EXISTING CIRCUIT TO NEW DOOR OPERATOR LOCATION WITH WIRING TO MATCH EXISTING. RECONNECT AND TEST.
- E4 CONNECT TO NORMAL LIGHTING CIRCUIT FORMERLY FEEDING LIGHTING IN ROOM.
- E5 CONNECT TO EXISTING RECEPTACLE CIRCUIT FORMERLY FEEDING RECEPTACLES IN ROOM.
- E6 RELOCATE EXISTING AHU DISCONNECT TO ACCOMMODATE NEW SHOWER INSTALLATION. EXTEND WIRING FROM ABOVE AND BELOW TO NEW LOCATION WITH WIRING TO MATCH EXISTING.
- E7 2#12, #12G, 3/4"C. TO NEW 20A-1P CIRCUIT BREAKER IN NEAREST NORMAL POWER RECEPTACLE PANEL. PROVIDE NEW CIRCUIT BREAKER TO MATCH EXISTING.
- E8 EXTEND EXISTING NOTIFICATION APPLIANCE CIRCUIT IN AREA TO NEW FIRE ALARM DEVICE IN CONDUIT.



2 BUILDING 2 - (SOW 3) PARTIAL SIXTH FLOOR ELECTRICAL PLAN
SCALE: 1/4"=1'0"



BUILDING 2-SIXTH KEY PLAN
SCALE: N.T.S.

100% CONSTRUCTION DOCUMENTS

CONSULTANTS:		ARCHITECT/ENGINEERS:		Drawing Title ELECTRICAL PLANS SOW 3 + 4- BLIND CENTER EAST, WEST WINGS		Project Title WOMEN VETERANS PRIVACY IMPROVEMENTS		Project Number 689-11-110 Building Number 6		Office of Construction and Facilities Management	
				Approved Project Director:		Location VAMC WEST HAVEN - WEST HAVEN, CONNECTICUT		Drawing Number E103		Department of Veterans Affairs	
Revisions		Professional Seal		Professional Seal		Date 10/31/2012		Checked JB		Drawn RSM	