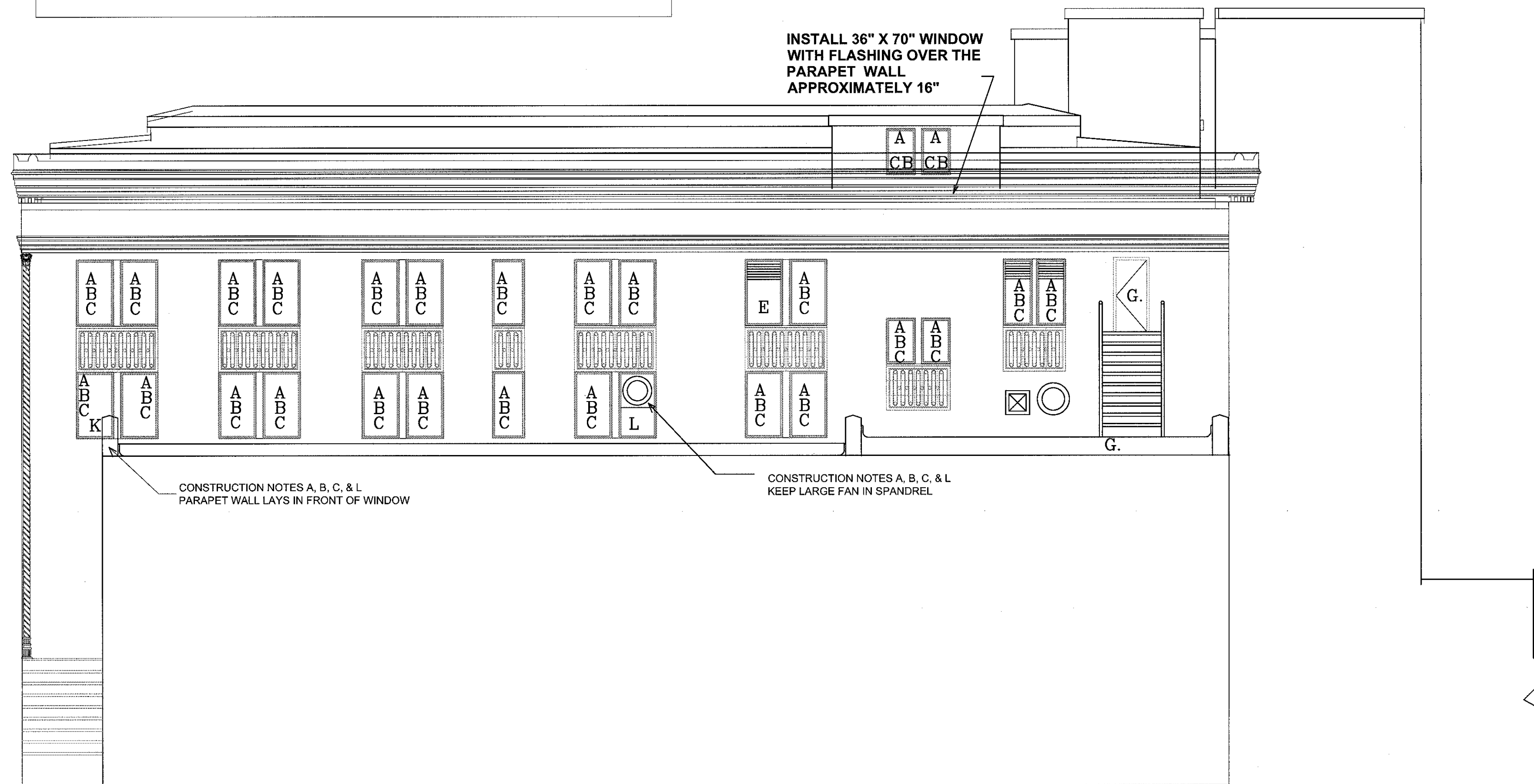
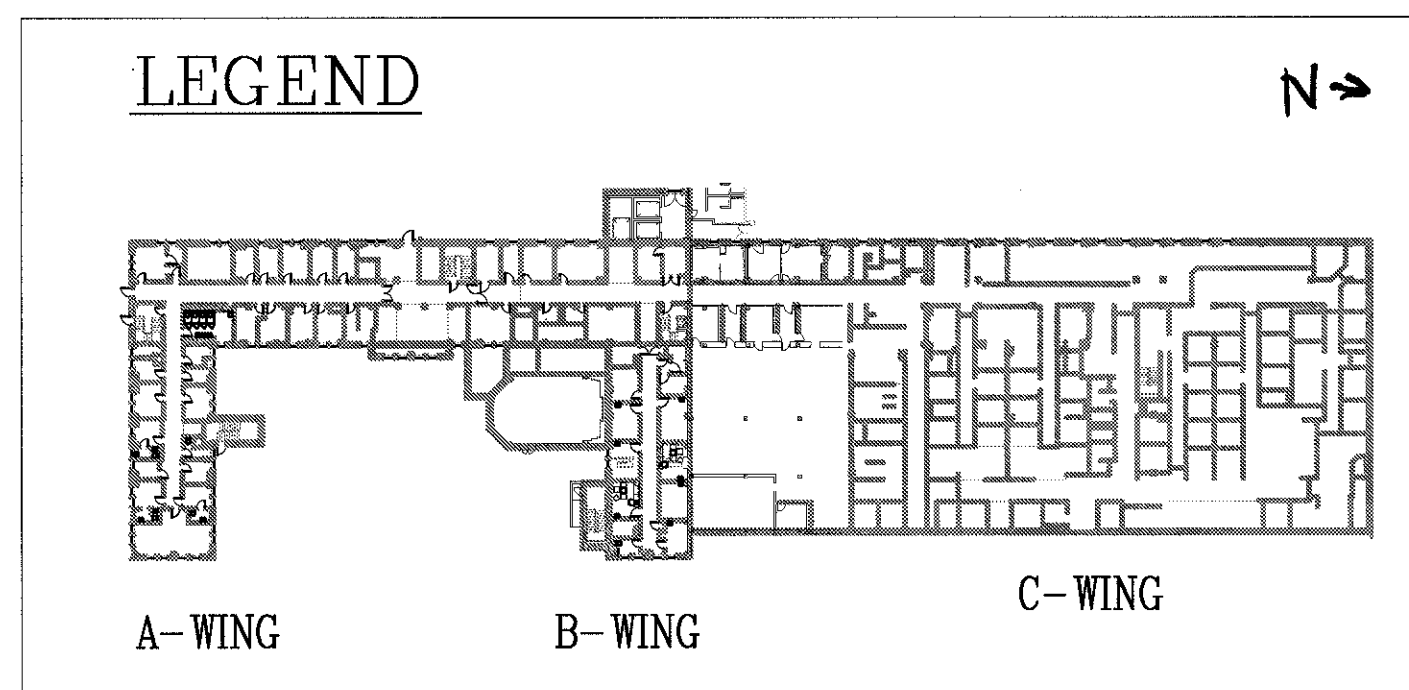


1 BLDG. I A WING NORTH ELEVATION  
SCALE: 1/8" = 1'-0"

34 WINDOWS

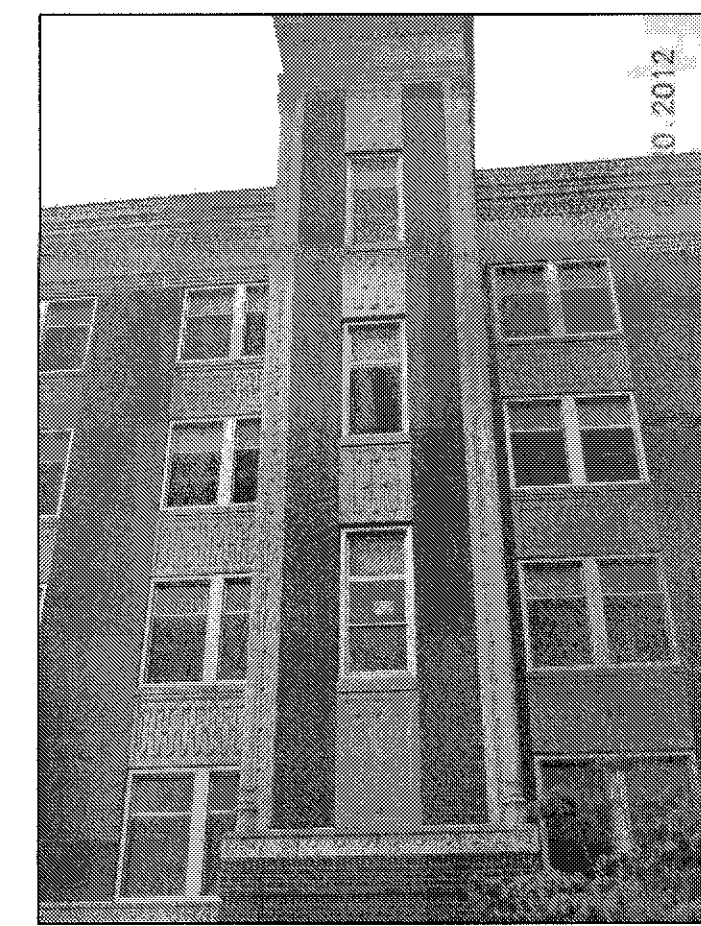


2 BLDG. I B WING NORTH ELEVATION  
SCALE: 1/8" = 1'-0"

28 WINDOWS



BLDG 1 A WING NORTH ELEVATION



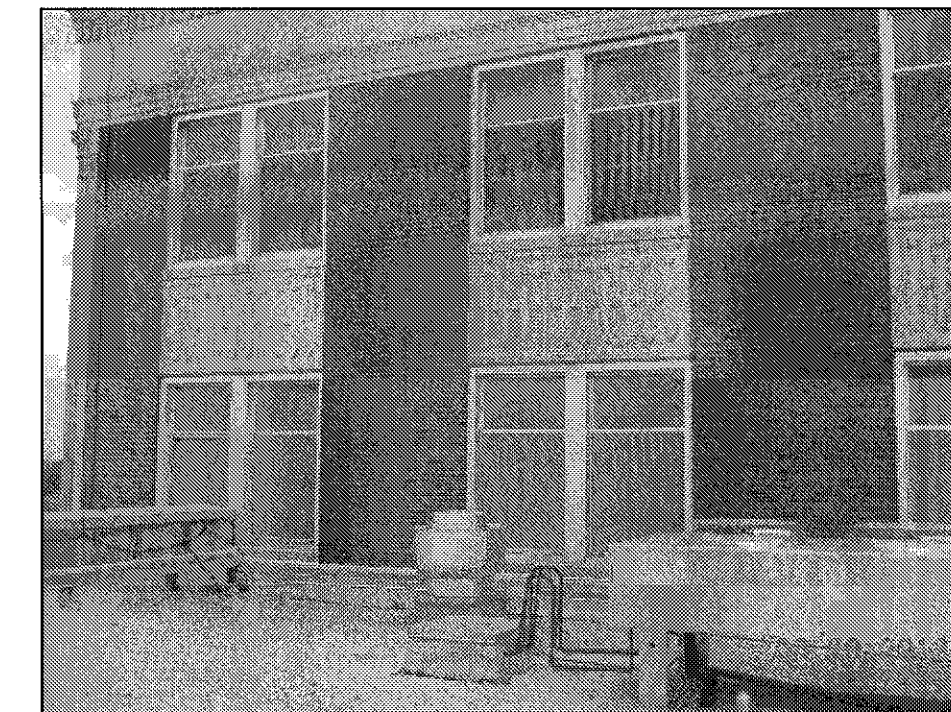
A WING NORTH ELEVATION STAIRWELL



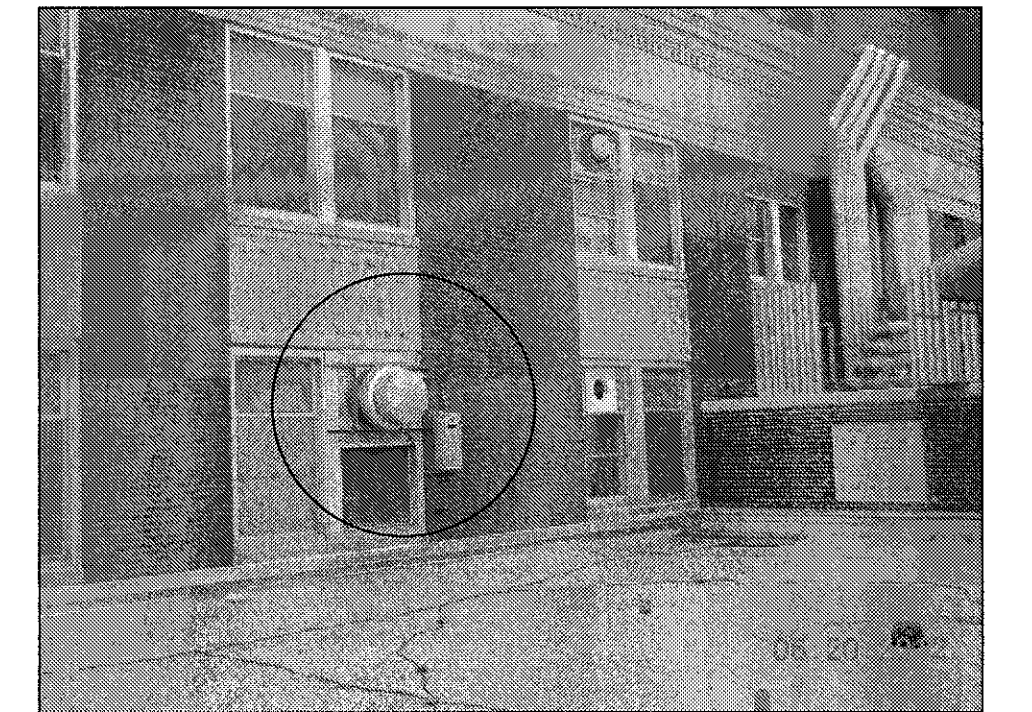
PRIMER AND PAINT DOOR, STAIR AND RAILING



2" COPPER THROUGH UPPER WINDOW H.)



PARAPET WALL IN FRONT OF WINDOW



LARGE FAN REMAINS

## ENVIRONMENTAL CONSIDERATIONS

- REMOVE ALUMINUM WINDOW BUT LEAVE HEAD JAMB AND SILL IN PLACE FOR ALL WINDOWS.
- REMOVE & DISPOSE THE TRANSIT PANEL, WHICH IS FREE FROM ANY FRIABLE ASBESTOS.
- TAKE CAUTION OF ORIGINAL WOOD WINDOWS & INTERIOR TRIM. THE WOOD HAS BEEN PAINTED WITH LEAD BASED PAINT. CAREFULLY DISPOSE THE WOOD IN A DOUBLE BAG.
- KEEP WINDOW FRAMES THAT ARE COVERED WITH ALUMINUM IN PLACE & WRAP THOSE INTERIOR WOOD MOLDINGS WITH ALUMINUM PANNING WHEN POSSIBLE FOR ALL WINDOWS.
- THE BUILDING WILL REMAIN FULLY FUNCTIONING AS A HOSPITAL DURING CONSTRUCTION.
- CONTRACTOR NEEDS TO OPERATE A SMOKE BARRIER PROTECTION FOR ALL LEVELS.
- CONTRACTOR NEED TO PROVIDE BINS FOR RECYCLABLES, DISPOSE DEBRIS DAILY OFF OF PROPERTY, & PROTECT PLANTS & VEGETATION FROM DAMAGE.
- CONTRACTOR NEEDS TO FILE HAZARDS LOG DAILY.

## CONSTRUCTION NOTES

- REMOVE RUST, CLEAN, PRIME, AND PAINT STEEL WINDOW LINTELS
- INSTALL NEW BLAST-RESISTANT ENERGY EFFICIENT .30 U VALUE PAINTED ALUMINUM WINDOWS.
- INSTALL NEW WATER RESISTANT SHEETROCK FROM WALL TO WINDOW. FINISH COMPLETELY WITH LATEX PRIME & SHERWIN WILLIAMS PROM MAR 200 LATEX PAINT & INSTALL BLAST CLIP & TRIM.
- DISPOSE OF EXISTING WINDOW BLINDS OR SHADES AND INSTALL NEW WINDOW TREATMENTS FOR ALL WINDOW TYPES EXCEPT STAIRWELLS.
- REMOVE WALL EXHAUSTER. INSTALL NEW WINDOW WITH INTEGRATED LOUVER. INSTALL CEILING EXHAUSTER INSTALL DUCT FROM EXHAUSTER TO INTEGRATED WINDOW LOUVER.
- INSTALL THREE NEW BLAST-RESISTANT THERMAL PANE .37 U VALUE PAINTED ALUMINUM WINDOWS IN PENTHOUSE MECHANICAL ROOM.
- REMOVE RUST PRIMER & ALKYD PAINT STEEL DOOR, STAIRS AND HAND RAILINGS.
- H. COPPER PIPE FOR DENTAL EXHAUST THRU UPPER WINDOW A WING NORTHEAST SIDE.
- FOR THE RESTROOM, KEEP DUCT THROUGH SPANDREL & GALVANIZE THE DUCT. THE DUCT REQUIRES A UNIQUE FIT THROUGH THE NEW PAINTED ALUMINUM WINDOW.
- REMOVE EXSTG. SMALL STEEL WINDOW REPLACE WITH ALUMINUM FIXED WINDOW.
- C WING PARAPET WALL LAYS DIRECTLY IN FRONT OF WINDOW. WHEN INSTALLING NEW PAINTED ALUMINUM WINDOW INSTALL WATER TIGHT FLASHING & REPAIR DAMAGE CEMENT PLASTER.
- REMOVE EXSTG. STEEL WINDOW REPLACE WITH ALUMINUM FIXED WINDOW.

REVISIONS:	DATE:	Dept. of Veterans Affairs Jack C. Montgomery Medical Center 1011 Honor Height Drive Muskogee, Oklahoma 74401		APPROVED:	APPROVED: President A.F.G.E. 2250	APPROVED: Energy Engineer	APPROVED: Medical Center Director	DRAWING TITLE	PROJECT TITLE	DATE
				APPROVED:	APPROVED:	APPROVED: Safety Manager	APPROVED: Associate Director	A WING NORTH ELE B WING NORTH ELE	REPLACE WINDOWS BUILDING #1	27 DECEMBER 2012
				APPROVED:	APPROVED:	APPROVED: Infection Control Nurse	APPROVED: Chief of Staff	PROJECT NO. 623-12-102	CONTRACT NO. VA256612C0232	SCALE 1/8" = 1'-0"
				APPROVED:	APPROVED:	APPROVED: Industrial Hygienist	APPROVED: Chief of Engineering Service	BUILDING NO. Building #1	AUTOCAD FILE NAME: 62312102A1.3	DRAWING NO. A1.3
								DESIGNED BY: PROUD VETERANS	DRAWN BY: CDG	CHECKED BY: NTG
								LOCATION Jack C. Montgomery VA Medical Center		DWG. 5 OF 31

Department of  
Veterans Affairs





BLDG. I A & B WING WEST ELEVATION  
SCALE: 1/8" = 1'-0"



REMOVE & REPLACE FIVE SMALL STEEL WINDOWS  
WEST VIEW OF A-WING



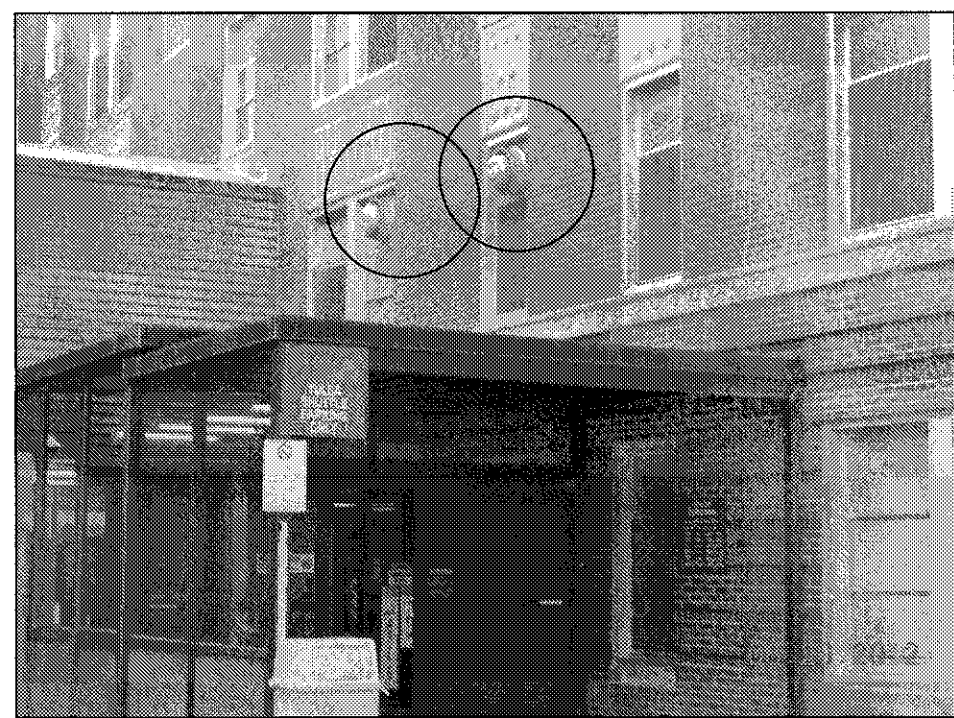
REMOVE & REPLACE THREE WINDOWS  
IN ELEVATOR SHAFT WEST VIEW OF B-WING

ENVIRONMENTAL CONSIDERATIONS

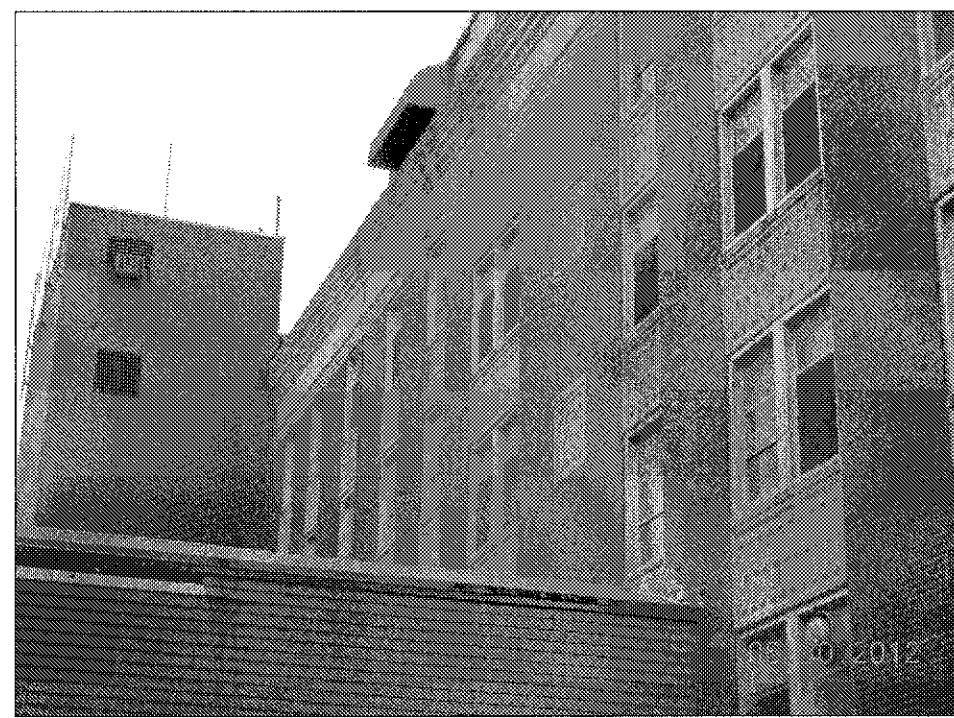
- REMOVE ALUMINUM WINDOW BUT LEAVE HEAD JAMB AND SILL IN PLACE FOR ALL WINDOWS.
- REMOVE & DISPOSE THE TRANSIT PANEL, WHICH IS FREE FROM ANY FRIABLE ASBESTOS.
- TAKE CAUTION OF ORIGINAL WOOD WINDOWS & INTERIOR TRIM. THE WOOD HAS BEEN PAINTED WITH LEAD BASED PAINT. CAREFULLY DISPOSE THE WOOD IN A DOUBLE BAG.
- KEEP WINDOW FRAMES THAT ARE COVERED WITH ALUMINUM IN PLACE & WRAP THOSE INTERIOR WOOD MOLDINGS WITH ALUMINUM PANNING WHEN POSSIBLE FOR ALL WINDOWS.
- THE BUILDING WILL REMAIN FULLY FUNCTIONING AS A HOSPITAL DURING CONSTRUCTION.
- CONTRACTOR NEEDS TO OPERATE A SMOKE BARRIER PROTECTION FOR ALL LEVELS.
- CONTRACTOR NEED TO PROVIDE BINS FOR RECYCLABLES, DISPOSE DEBRIS DAILY OFF OF PROPERTY, & PROTECT PLANTS & VEGETATION FROM DAMAGE.
- CONTRACTOR NEEDS TO FILE HAZARDS LOG DAILY.

CONSTRUCTION NOTES

- REMOVE RUST, CLEAN, PRIME, AND PAINT STEEL WINDOW LINTELS
- INSTALL NEW BLAST-RESISTANT ENERGY EFFICIENT .30 U VALUE PAINTED ALUMINUM WINDOWS.
- INSTALL NEW WATER RESISTANT SHEETROCK FROM WALL TO WINDOW. FINISH COMPLETELY WITH LATEX PRIME & SHERWIN WILLIAMS PROM MAR 200 LATEX PAINT & INSTALL BLAST CLIP & TRIM.
- DISPOSE OF EXISTING WINDOW BLINDS OR SHADES & INSTALL NEW WINDOW TREATMENTS FOR ALL WINDOW TYPES EXCEPT STAIRWELLS.
- REMOVE WALL EXHAUSTER. INSTALL NEW WINDOW WITH INTEGRATED LOUVER. INSTALL CEILING EXHAUSTER INSTALL DUCT FROM EXHAUSTER TO INTEGRATED WINDOW LOUVER.
- INSTALL TWO NEW BLAST-RESISTANT THERMAL PANE .37 U VALUE PAINTED ALUMINUM WINDOWS IN PENTHOUSE/ ELEVATOR TOWER.
- REMOVE RUST, PRIME, & USE ALKYD PAINT ON STEEL DOOR, STAIRS & HAND RAILINGS.
- FOR THE RESTROOMS LOCATED ON THE 2ND FLOOR NEAR THE ELEVATOR, KEEP DUCT THROUGH SPANDREL, GALVANIZE THE DUCT, & INSTALL OPAQUE SPANDREL GLAZING.
- ON THE 2ND FLOOR OF B-WING, A PARAPET WALL PROTRUDES IN FRONT OF THE 3RD WINDOW.
- REMOVE EXSTG. SMALL STEEL WINDOW REPLACE WITH ALUMINUM FIXED WINDOW.
- INSTALL NEW BLAST-RESISTANT LAMINATE COATING ON A-WING REAR STOREFRONT. REMOVE & INSTALL NEW HEAVY GAGE BLAST RESISTANT STOREFRONT SLIDER DOORS.
- WHEN INSTALLING NEW PAINTED ALUMINUM WINDOWS, INSTALL WATER TIGHT FLASHING & REPAIR DAMAGE CEMENT PLASTER.
- ELECTRIC CONDUITS WHICH LAY ACROSS WINDOW HINDERS CONSTRUCTION



REMOVE & REPLACE TWO WINDOW EXHAUSTERS  
SEE CONSTRUCTION NOTE H.  
LOCATED ON THE 2ND FLOOR OF A-WING  
NEAR THE ELEVATORS ABOVE THE ENTRANCE



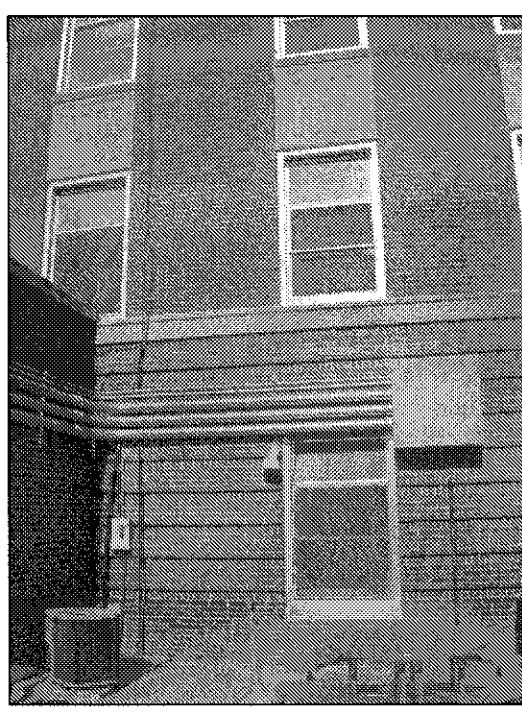
VIEW SHOWS CONNECTING HALLWAY BETWEEN  
THE TWO BUILDINGS



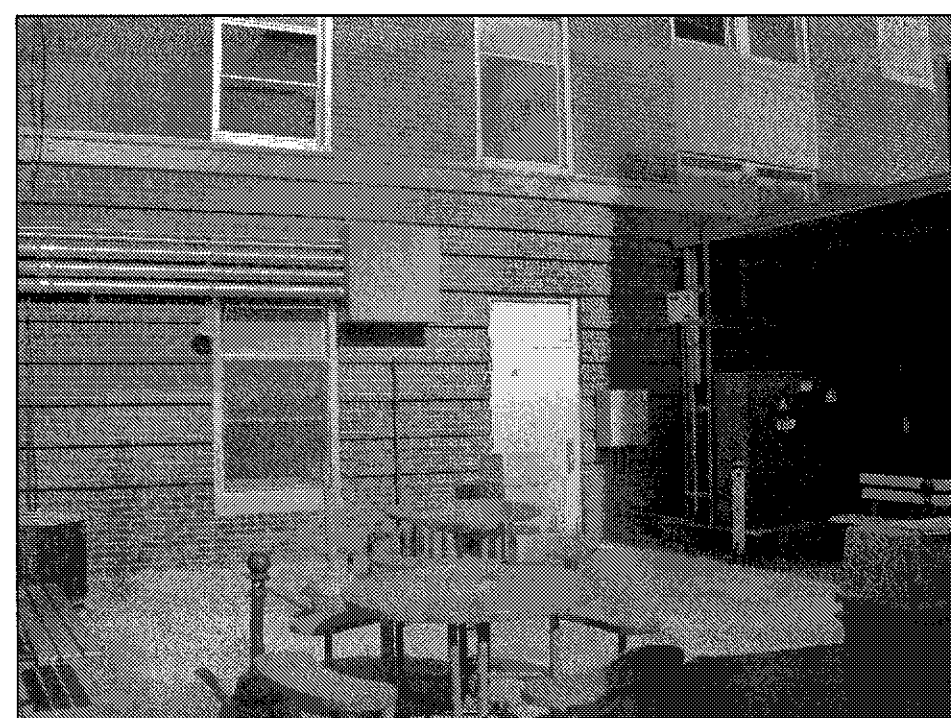
REPLACE TWO WINDOWS IN ELEVATOR TOWER  
SEE CONSTRUCTION NOTE F.  
WEST VIEW OF B-WING



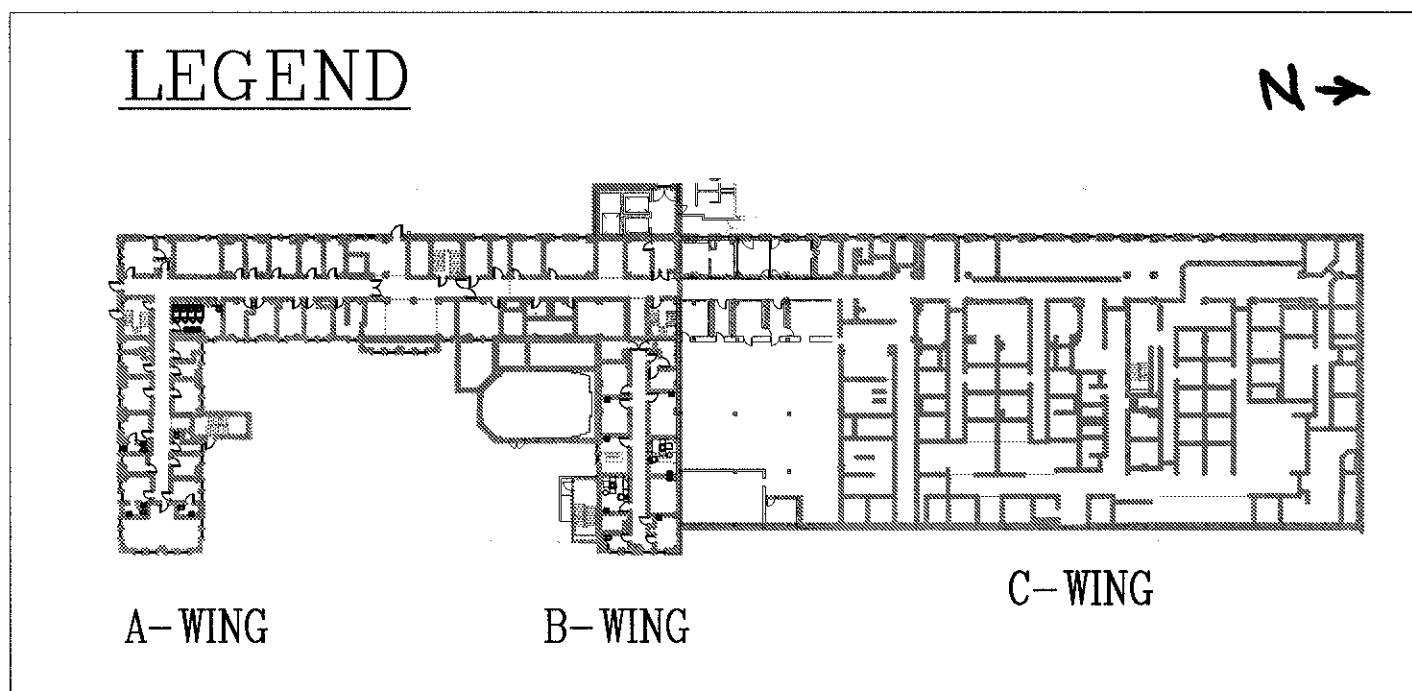
REPLACE EXSTG. SMALL STEEL WINDOW.  
SEE CONSTRUCTION NOTE J.



ELECTRIC CONDUITS LAY ACROSS WINDOW  
HINDERS THE CONSTRUCTION PROCESS  
ALSO REMOVE RUST, PRIME, & PAINT DOOR  
SEE CONSTRUCTION NOTE M.



ROOF PROTRUDES IN FRONT OF STAIRWELL WINDOW  
HINDERS THE CONSTRUCTION PROCESS  
WEST VIEW OF B-WING



REVISIONS:	DATE:		Dept. of Veterans Affairs Jack C. Montgomery Medical Center 1011 Honor Height Drive Muskogee, Oklahoma 74401		APPROVED:	APPROVED: President A.F.G.E. 2250	APPROVED: Energy Engineer	APPROVED: Medical Center Director	DRAWING TITLE	PROJECT TITLE			DATE	
					APPROVED:	APPROVED:	APPROVED: Safety Manager	APPROVED: Associate Director	A & B WING WEST ELEVATION	REPLACE WINDOWS BUILDING #1			27 DECEMBER 2012	
					APPROVED:	APPROVED:	APPROVED: Infection Control Nurse	APPROVED: Chief of Staff	PROJECT NO. 623-12-102	CONTRACT NO. VA256612C0232	DESIGNED BY: PROUD VETERANS	DRAWN BY: JA	CHECKED BY: NTG	SCALE: 1/8" = 1'-0"
					APPROVED:	APPROVED:	APPROVED: Industrial Hygienist	APPROVED: Chief of Engineering Service	BUILDING NO. Building #1	AUTOCAD FILE NAME: 62312102A1.4	LOCATION Jack C. Montgomery VA Medical Center	DRAWING NO. A1.4	DWG. 6 OF 31	

Department of  
Veterans Affairs