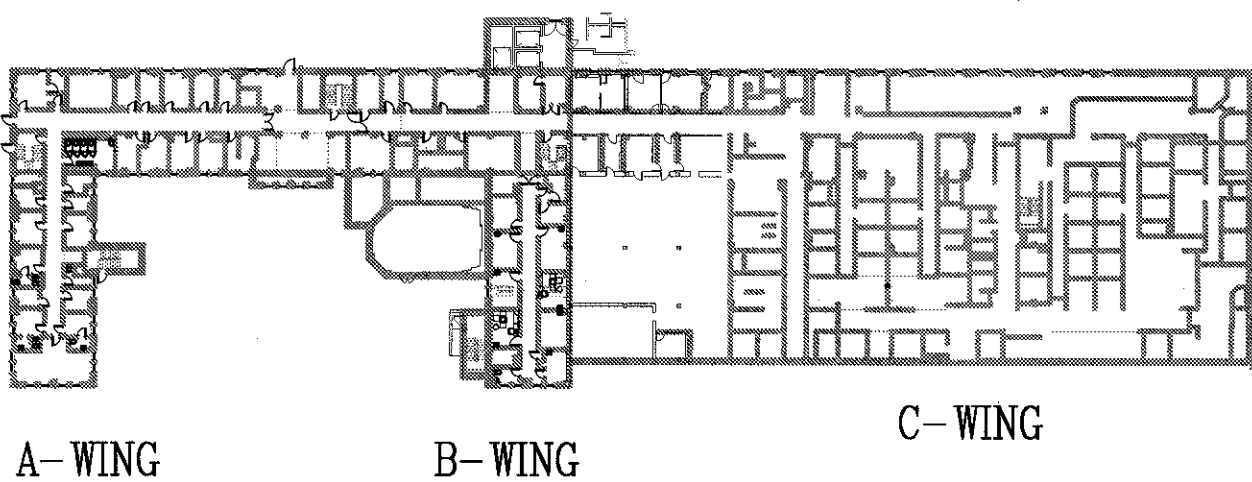
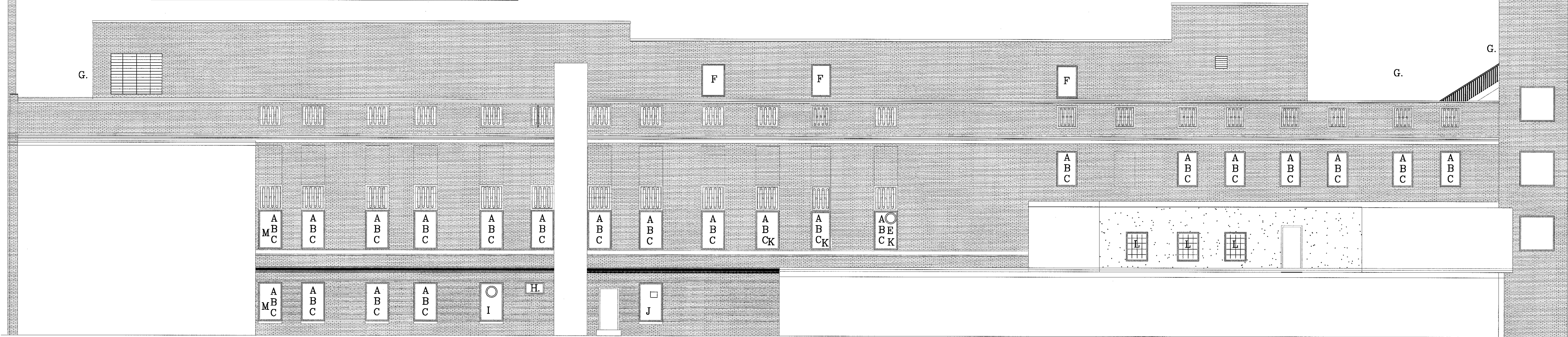


BUILDING 53

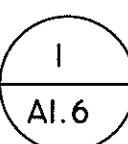
LEGEND



B WING



BUILDING 52



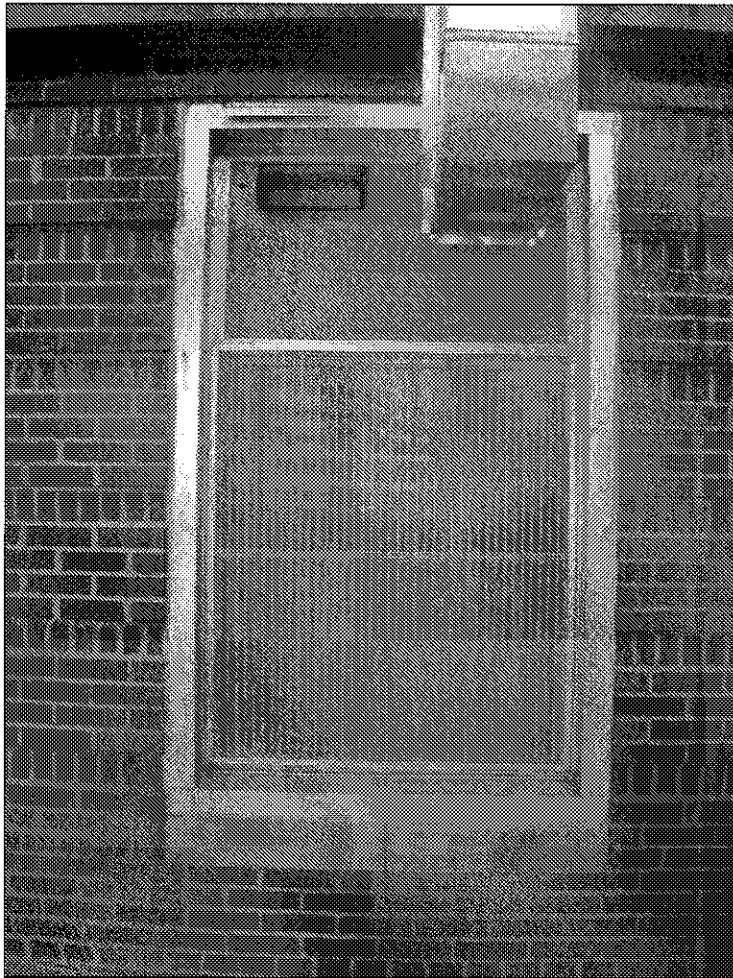
C WING WEST ELEVATION

SCALE: 1/8" = 1'-0"

31 WINDOWS



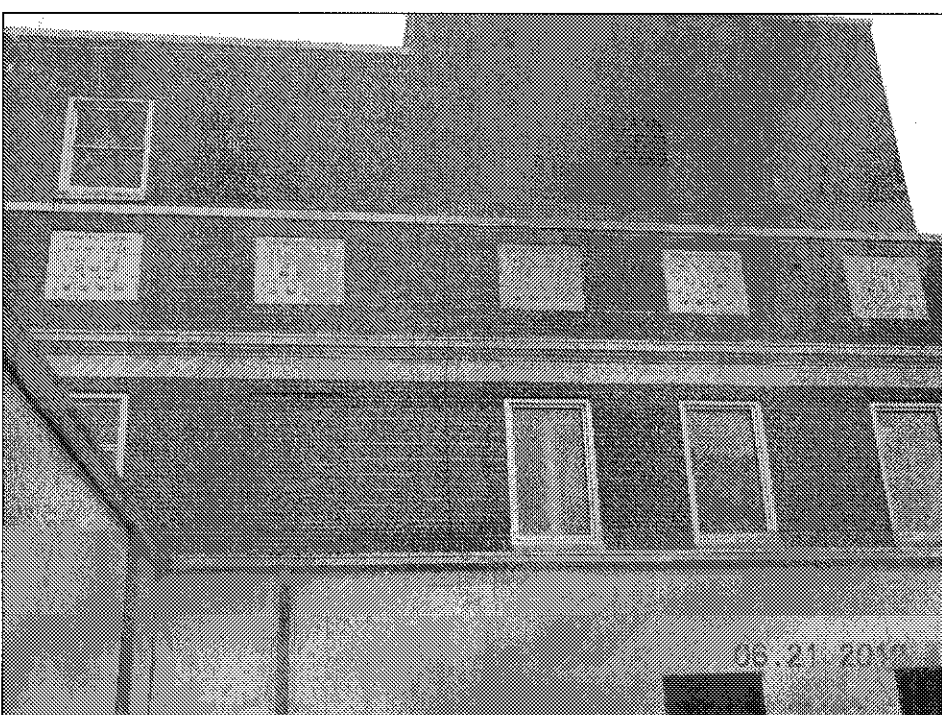
PAINT DOOR & GALVANIZED THE COVER G&H  
LOCATED WEST SIDE OF C-WING



KEEP DUCT THROUGH SPANDREL J.)  
LOCATED WEST SIDE OF C-WING



CHANGE RESTROOM EXHAUSTER TO LOUVER  
LOCATED WEST SIDE OF C-WING ON THE  
THIRD FLOOR



SHOWS WINDOW COVERED WITH BRICKS  
LOCATED WEST SIDE OF C-WING NEAR THE  
MECHANICAL ROOM



REPLACE THREE WINDOWS & INTERIOR GRIDS  
LOCATED WEST SIDE OF C-WING NEAR THE  
MECHANICAL ROOM ON THE SECOND FLOOR  
SEE CONSTRUCTION NOTES A, B, C, & L



REPLACE SURGERY CORRIDOR WINDOWS  
LOCATED WEST SIDE OF C-WING ON THE  
THIRD FLOOR  
SEE CONSTRUCTION NOTES A, B, & C.



KEEP MECHANICAL RM EXHAUSTER IN PLACE  
VIEW OF WEST SIDE OF C-WING  
SEE CONSTRUCTION NOTES I.



TWO WINDOWS ARE RECESSED INSIDE OF THE  
BLDG 53. VIEW OF WEST SIDE OF C-WING  
SEE CONSTRUCTION NOTES M.



REPLACE THE TWO PENTHOUSE WINDOWS  
LEVEL THREE WINDOWS ARE COVERED IN BRICK  
VIEW OF WEST SIDE OF C-WING  
SEE CONSTRUCTION NOTES A, B, & C.



REPLACE THREE WINDOWS WITH FLASHING  
VIEW OF WEST SIDE OF C-WING ON THE  
SECOND FLOOR  
SEE CONSTRUCTION NOTES K.

ENVIRONMENTAL CONSIDERATIONS

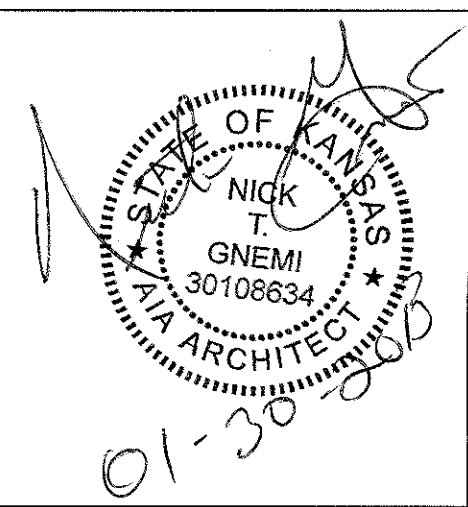
- REMOVE ALUMINUM WINDOW BUT LEAVE HEAD JAMB & SILL IN PLACE FOR ALL WINDOWS.
- REMOVE & DISPOSE THE TRANSIT PANEL, WHICH IS FREE FROM ANY FRIABLE ASBESTOS.
- TAKE CAUTION OF ORIGINAL WOOD WINDOWS & INTERIOR TRIM. THE WOOD HAS BEEN PAINTED WITH LEAD BASED PAINT. CAREFULLY DISPOSE THE WOOD IN A DOUBLE BAG.
- KEEP WINDOW FRAMES THAT ARE COVERED WITH ALUMINUM IN PLACE & WRAP THOSE INTERIOR WOOD MOLDINGS WITH ALUMINUM PANNING WHEN POSSIBLE FOR ALL WINDOWS.
- THE BUILDING WILL REMAIN FULLY FUNCTIONING AS A HOSPITAL DURING CONSTRUCTION.
- CONTRACTOR NEEDS TO OPERATE A SMOKE BARRIER' PROTECTION FOR ALL LEVELS.
- CONTRACTOR NEED TO PROVIDE BINS FOR RECYCLABLES, DISPOSE DEBRIS DAILY OFF OF PROPERTY, & PROTECT PLANTS & VEGETATION FROM DAMAGE.
- CONTRACTOR NEEDS TO FILE HAZARDS LOG DAILY.

CONSTRUCTION NOTES

- REMOVE RUST, CLEAN, PRIME, AND PAINT STEEL WINDOW LINTELS
- INSTALL NEW BLAST-RESISTANT ENERGY EFFICIENT .30 U VALUE PAINTED ALUMINUM WINDOWS.
- INSTALL NEW WATER RESISTANT SHEETROCK FROM WALL TO WINDOW. FINISH COMPLETELY WITH LATEX PRIME & SHERWIN WILLIAMS PROM MAR 200 LATEX PAINT & INSTALL BLAST CLIP & TRIM.
- DISPOSE OF EXISTING WINDOW BLINDS OR SHADES AND INSTALL NEW WINDOW TREATMENTS FOR ALL WINDOW TYPES EXCEPT STAIRWELLS.
- REMOVE WALL EXHAUSTER. INSTALL NEW WINDOW WITH INTEGRATED LOUVER. INSTALL CEILING EXHAUSTER INSTALL DUCT FROM EXHAUSTER TO INTEGRATED WINDOW LOUVER.
- INSTALL THREE NEW BLAST-RESISTANT THERMAL PANE .37 U VALUE PAINTED ALUMINUM WINDOWS IN PENTHOUSE MECHANICAL ROOM.
- REMOVE RUST PRIMER & ALKYD PAINT STEEL DOOR, STAIRS AND HAND RAILINGS.
- PRIME & USE GALVANIZED PAINT ON THE COVER.
- KEEP EXHAUSTER THROUGH SPANDREL IN NEW WINDOW
- KEEP DUCT THROUGH SPANDREL IN NEW WINDOW & GALVANIZE THE DUCT.
- ADD ALUMINUM FLASHING TO THREE WINDOWS AT THE SILL IN THE PARAPET AREA.
- THREE WINDOWS REQUIRE AN 8" CENTER GRID IN THE THERMAL PANE.
- TWO WINDOWS UP AGAINST BUILDING 53.

REVISIONS:	DATE:

Dept. of Veterans Affairs  
Jack C. Montgomery  
Medical Center  
1011 Honor Height Drive  
Muskogee, Oklahoma 74401



APPROVED:	APPROVED: President A.F.G.E. 2250	APPROVED: Energy Engineer	APPROVED: Medical Center Director
APPROVED:	APPROVED:	APPROVED: Safety Manager	APPROVED: Associate Director
APPROVED:	APPROVED:	APPROVED: Infection Control Nurse	APPROVED: Chief of Staff
APPROVED:	APPROVED:	APPROVED: Industrial Hygienist	APPROVED: Chief of Engineering Service

DRAWING TITLE	
C WING WEST ELEVATION	
PROJECT NO. 623-12-102	CONTRACT NO. VA256612C0232
BUILDING NO. Building #1	AUTOCAD FILE NAME 62312102A1.6

PROJECT TITLE		
REPLACE WINDOWS BUILDING #1		
DESIGNED BY: PROUD VETERANS	DRAWN BY: NTG	CHECKED BY: NTG
LOCATION Jack C. Montgomery VA Medical Center		

DATE 27 DECEMBER 2012
SCALE 1/8" = 1'-0"
DRAWING NO. A1.6
DWG. 8 OF 31

Department of  
Veterans Affairs