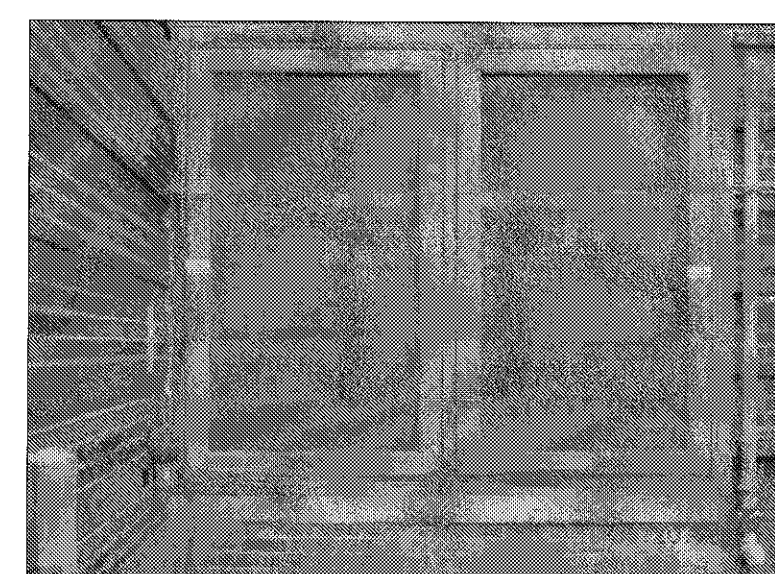


REMOVE RUST, PRIME, & PAINT DOORS LOCATED NORTH OF A-WING 100C-1



REMOVE RUST, PRIME, & PAINT DOOR LOCATED SOUTH OF A-WING 1AS1-1



REMOVE HEAVY GAGE FRAME LOCATED SOUTH OF A-WING 1B104-L



REMOVE HEAVY GAGE FRAMES REMOVE RUST, PRIME, & PAINT DOORS INSTALL NEW CONCRETE PLAQUE LOCATED EAST OF B-WING 1B104-L

ENVIRONMENTAL CONSIDERATIONS

- REMOVE ALUMINUM WINDOW BUT LEAVE HEAD JAMB AND SILL IN PLACE FOR ALL WINDOWS.
- REMOVE & DISPOSE THE TRANSIT PANEL, WHICH IS FREE FROM ANY FRIABLE ASBESTOS.
- TAKE CAUTION OF ORIGINAL WOOD WINDOWS & INTERIOR TRIM. THE WOOD HAS BEEN PAINTED WITH LEAD BASED PAINT. CAREFULLY DISPOSE THE WOOD IN A DOUBLE BAG.
- KEEP WINDOW FRAMES THAT ARE COVERED WITH ALUMINUM IN PLACE & WRAP THOSE INTERIOR WOOD MOLDINGS WITH ALUMINUM PANNING WHEN POSSIBLE FOR ALL WINDOWS.
- THE BUILDING WILL REMAIN FULLY FUNCTIONING AS A HOSPITAL DURING CONSTRUCTION.
- CONTRACTOR NEEDS TO OPERATE A SMOKE BARRIER PROTECTION FOR ALL LEVELS.
- CONTRACTOR NEED TO PROVIDE BINS FOR RECYCLABLES, DISPOSE DEBRIS DAILY OFF OF PROPERTY, & PROTECT PLANTS & VEGETATION FROM DAMAGE.
- CONTRACTOR NEEDS TO FILE HAZARDS LOG DAILY.

DEMOLITION FLOOR PLAN NOTES

- DEMOLISH & REPLACE EXSTG. ALUMINUM WINDOW BLINDS & VALANCE
- DEMOLISH & REPLACE EXSTG. MAIN ENTRY STOREFRONT
- REMOVE RUST & REPAIR HOLE IN STEEL
- DEMOLISH & REPLACE EXSTG. HEAVY GAGE STEEL FRAME
- DEMOLISH & REPLACE EXSTG. STEEL SMALL WINDOW
- REMOVE RUST FRONT STEEL DOOR ASSEMBLY
- REMOVE RUST FROM RAILING
- DEMOLISH & REPLACE TWO WINDOWS & BRICK BETWEEN
- DEMOLISH & REPLACE REAR SLIDER DOORS & INSTALL HEAVY GAGE BLAST SLIDER
- DEMOLISH & REPLACE MAIN ENTRY INTERIOR SLIDER DOORS & INSTALL HEAVY DUTY SLIDER DOOR TO COLOR MATCH NEW WINDOWS.

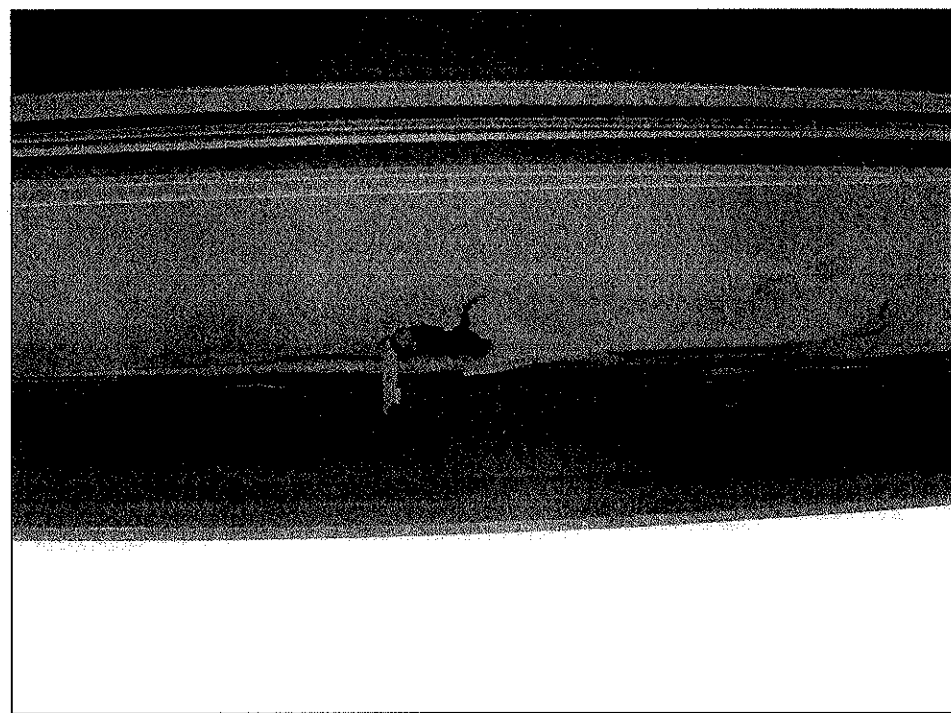
CONSTRUCTION NOTES

- REMOVE RUST, CLEAN, PRIME, & PAINT STEEL WINDOW LINTELS
- INSTALL NEW BLAST-RESISTANT ENERGY EFFICIENT .30 U VALUE PAINTED ALUMINUM WINDOWS.
- INSTALL NEW WATER RESISTANT SHEETROCK FROM WALL TO WINDOW. FINISH COMPLETELY WITH LATEX PRIME & SHERWIN WILLIAMS PROM MAR 200 LATEX PAINT & INSTALL BLAST CLIP & TRIM.
- DISPOSE OF EXISTING WINDOW BLINDS OR SHADES AND INSTALL NEW WINDOW TREATMENTS FOR ALL WINDOW TYPES EXCEPT STAIRWELLS.
- INSTALL NEW WINDOW WITH INTEGRATED LOUVER. INSTALL NEW CEILING EXHAUST FAN. INSTALL NEW DUCTWORK FROM FAN TO LOUVER & ATTACH TO LOUVER.
- INSTALL OPAQUE SPANDREL GLAZING IN RESTROOM 1051-1
- REMOVE RUST, PRIME, & ALKYD PAINT STEEL DOOR, RAILINGS, & STAIR COMPONENTS.
- INSTALL CONCRETE PLAQUE IN B WING EAST ELEVATION.
- INSTALL NEW BLAST-RESISTANT ENERGY EFFICIENT PAINTED ALUMINUM STOREFRONT.

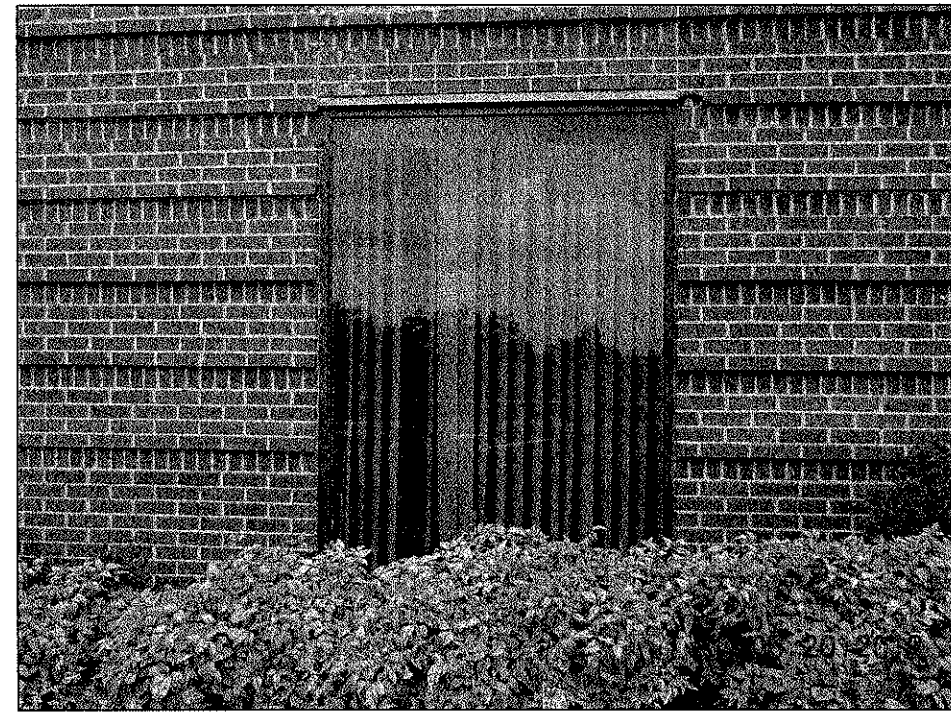
REVISIONS:	DATE:			Dept. of Veterans Affairs Jack C. Montgomery Medical Center 1011 Honor Height Drive Muskogee, Oklahoma 74401			APPROVED: _____ APPROVED: _____ APPROVED: _____ APPROVED: _____	APPROVED: President A.F.G.E. 2250 APPROVED: _____ APPROVED: _____ APPROVED: _____	APPROVED: Energy Engineer APPROVED: Safety Manager APPROVED: Infection Control Nurse APPROVED: Industrial Hygienist	APPROVED: Medical Center Director APPROVED: Associate Director APPROVED: Chief of Staff APPROVED: Chief of Engineering Service	DRAWING TITLE BUILDING A & B FIRST FLOOR PLAN	PROJECT TITLE REPLACE WINDOWS BUILDING #1	DATE 20 DECEMBER 2012	SCALE 1/8" = 1'-0"	DRAWING NO. A2.1	DWG. 9 OF 31	Department of Veterans Affairs
------------	-------	--	--	--	--	--	--	--	--	---	--	--	--------------------------	-----------------------	----------------------------	-----------------	-----------------------------------



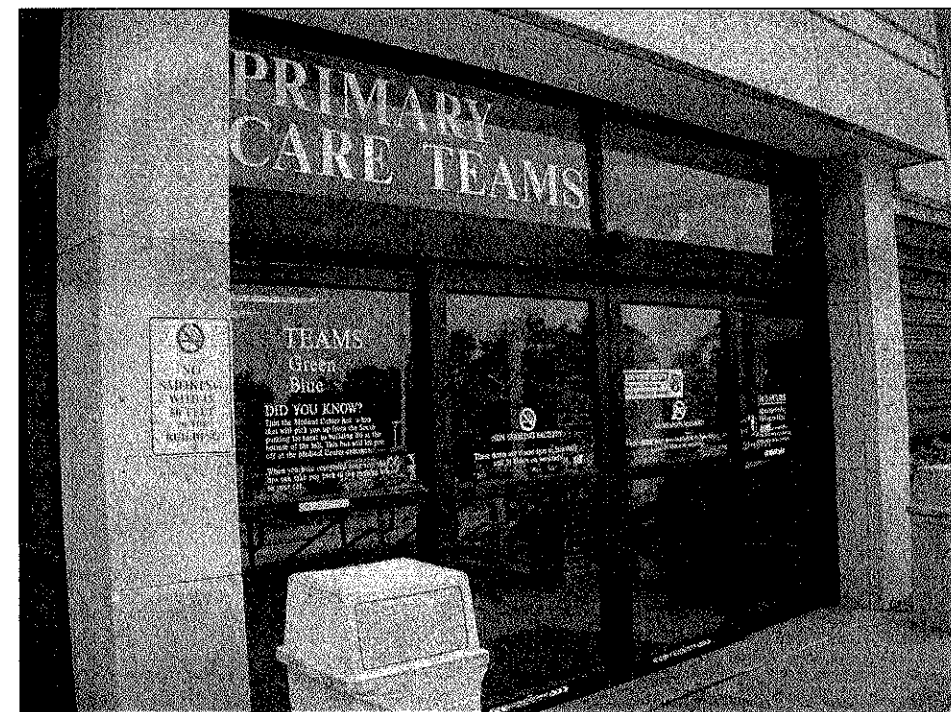
REMOVE BRICKS FIVE COURSES AND REINSTALL



INTERIOR WINDOW HEAD REPAIR AND REPLACE



1C165 WINDOW HEAD LEAKING TO THE INTERIOR



REMOVE AND REPLACE STOREFRONT ENTRANCES

ENVIRONMENTAL CONSIDERATIONS

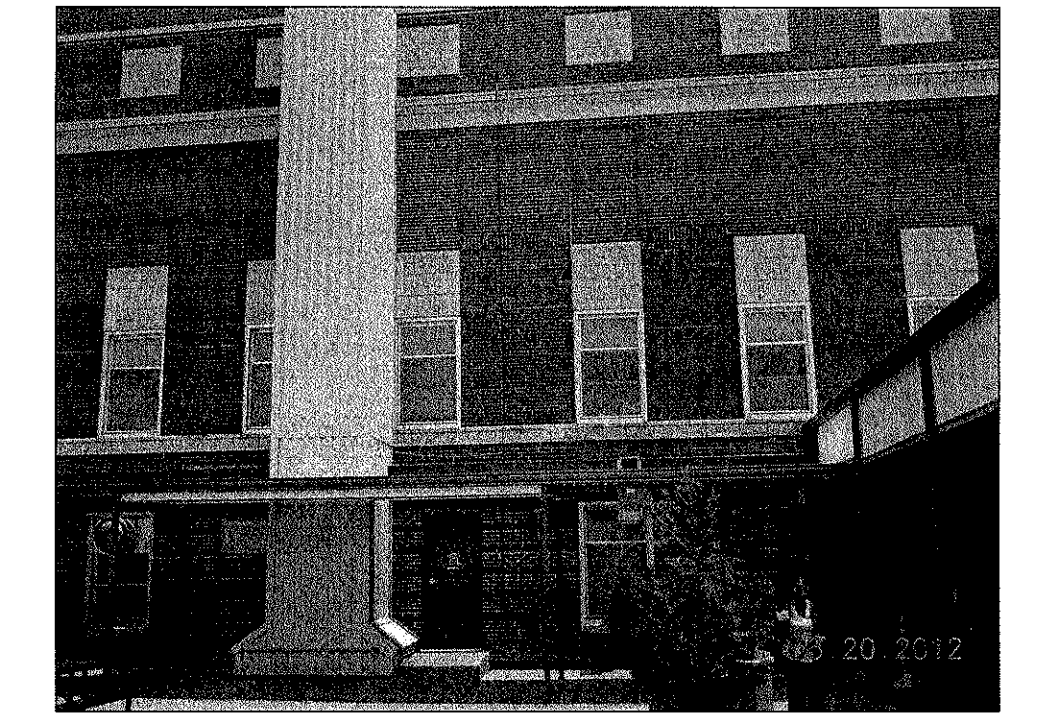
REMOVE ALUMINUM WINDOW LEAVING HEAD JAMB AND SILL IN PLACE. TRANSITE PANEL IS CONSIDERED NON FRIABLE ASBESTOS, REMOVE AND DISPOSE. CAUTION: ORIGINAL WOOD WINDOWS AND INTERIOR TRIM WHERE PAINTED WITH LEAD BASED PAINT. WINDOW FRAMES HAVE BEEN COVERED WITH ALUMINUM LEAVE IN PLACE. WRAP INTERIOR WOOD MOLDINGS WITH ALUMINUM PANNING WHEN POSSIBLE. CAREFUL WHEN REMOVING ANY WOOD TRIM DOUBLE BAG AND DISPOSE. BUILDING WILL REMAIN FULLY FUNCTIONING AS A HOSDPITAL DURING CONSTRUCTION. CONTRACTOR TO OPERATE TO SMOKE BARRIER PROTECTION LEVEL. CONTRACTOR TO PROVIDE FOR RECYCLABLES. CONTRACTOR TO FILL OUT HAZARDS LOG DAILY. PROTECT EXTERIOR VEGETATION FROM DAMAGE, DIPOSE OF DEBRIS DAILY OFF OF CAMPUS.

FLOOR PLAN NOTES

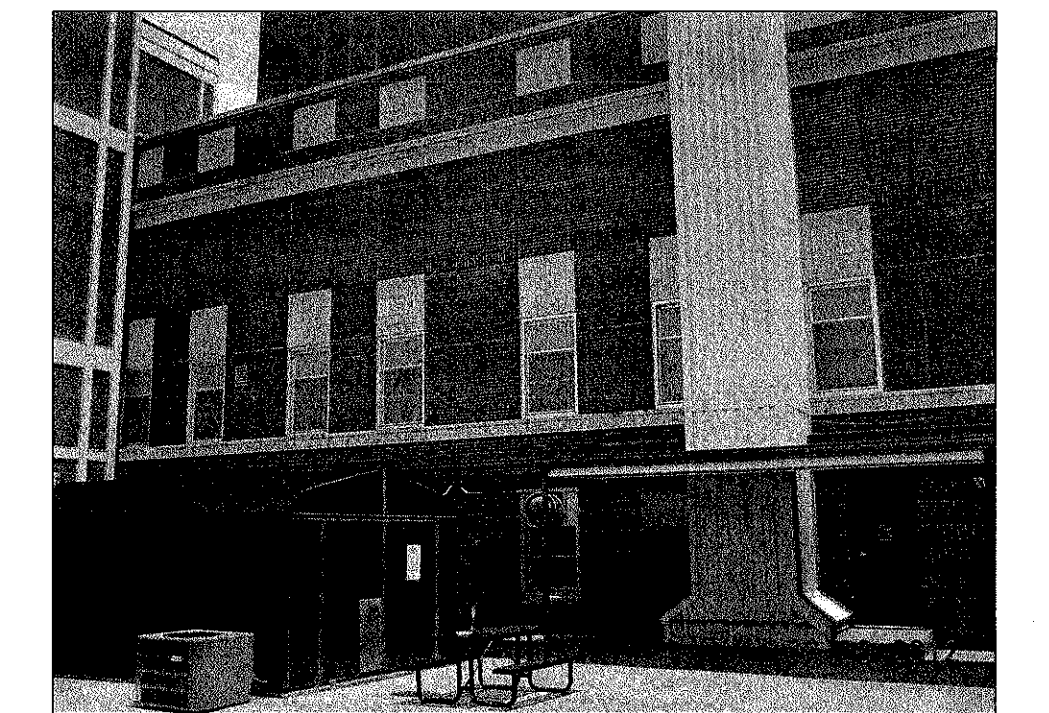
1. DEMOLITION EXSTG. ALUMINUM WINDOW
2. DEMOLITION EXSTG. WAITING ROOM ENTRY STOREFRONT
3. DEMOLITION EXSTG. PRIMARY CARE ENTRY STOREFRONT
4. DEMOLITION EXSTG. EMERGENCY ROOM STOREFRONT
5. DEMOLITION BRICKS ABOVE WINDOWS
6. REMOVE RUST FRONT STEEL DOOR ASSEMBLY
7. DEMOLITION WINDOW WITH LOUVER AND DUCT
8. DEMOLITION WINDOW WITH EXHAUSTER INSTALL SPANDREL
9. DEMOLITION WINDOW AGAINST BLDG 53

CONSTRUCTION NOTES

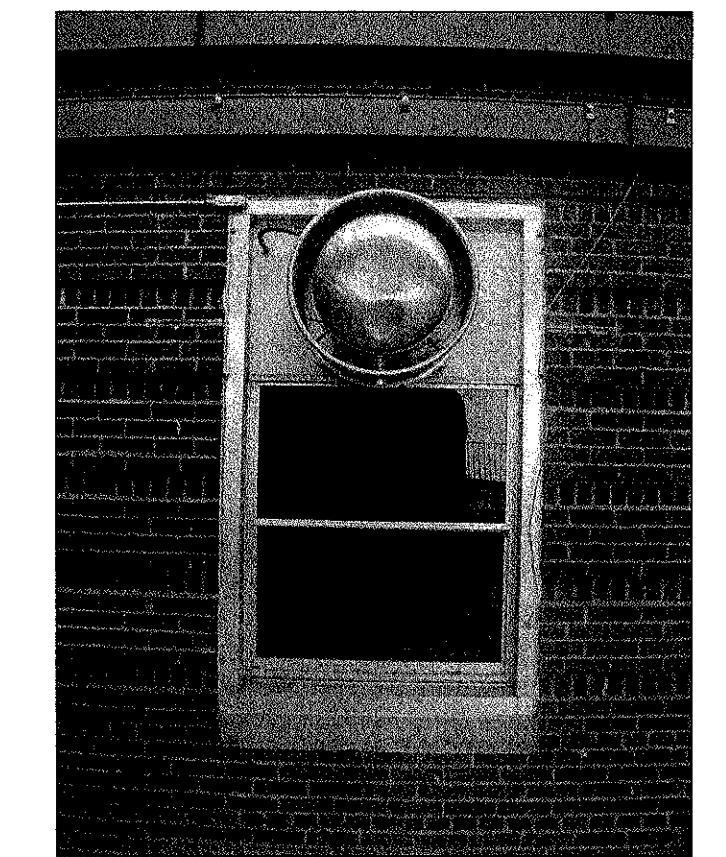
- A. REMOVE RUST, CLEAN, PRIMER, AND PAINT STEEL WINDOW LINTELS
- B. INSTALL NEW BLAST-RESISTANT ENERGY EFFICIENT .30 U VALUE PAINTED ALUMINUM WINDOWS.
- C. INSTALL NEW WATER RESISTANT SHEETROCK FROM WALL TO WINDOW, FINISH COMPLETELY SMOOTH. LATEX PRIMER AND SHERWIN WILLIAMS PROM MAR 200 LATEX PAINT INSTALL BLAST CLIP AND TRIM.
- D. INSTALL NEW WINDOW WITH INTEGRATED LOUVER. INSTALL NEW CEILING EXHAUST FAN. INSTALL NEW DUCTWORK FROM FAN TO LOUVER AND ATTACH TO LOUVER.
- E. INSTALL NEW BLAST-RESISTANT ENERGY EFFICIENT PAINTED ALUMINUM STOREFRONT.
- F. DISPOSE OF EXISTING WINDOW BLINDS AND INSTALL NEW WINDOW TREATMENTS ALL WINDOWS TYPE
- G. NEW WINDOW JAMB FOR TWO WINDOWS AGAINST BLDG 53 REQUIRE SPECIAL SIZING FIELD VERIFY.
- H. NEW WINDOW WITH EXHAUST LOUVER MUST BE INSTALLED FROM THE OUTSIDE.
- I. INSTALL OPAGUE SPANDREL GLAZING SO AS TO NOT SEE INTO THE INTERIOR.
- I. INSTALL OPAGUE SPANDREL GLAZING SO AS TO NOT SEE INTO THE INTERIOR.



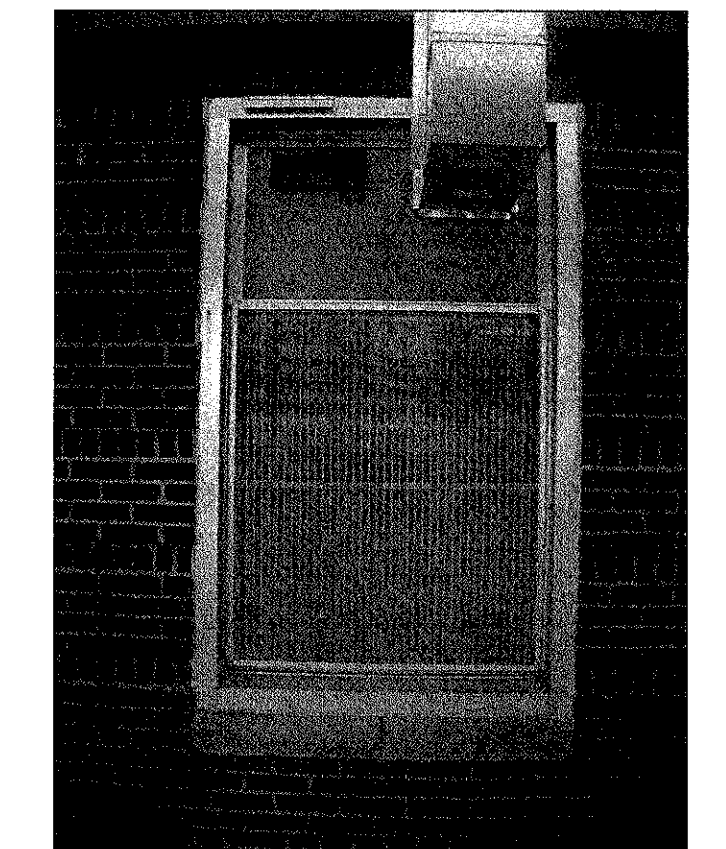
C WING WEST SIDE ELEVATION



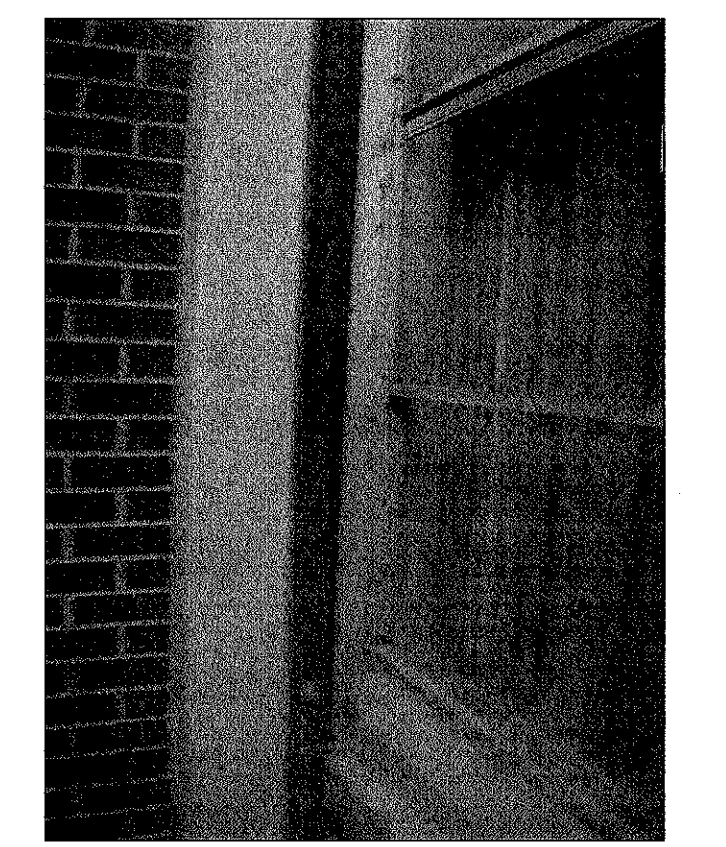
1C43B MECHANICAL ROOM PRIMER AND PAINT DOOR



1C145 MECH RM EXHAUSTER THROUGH SPANDREL



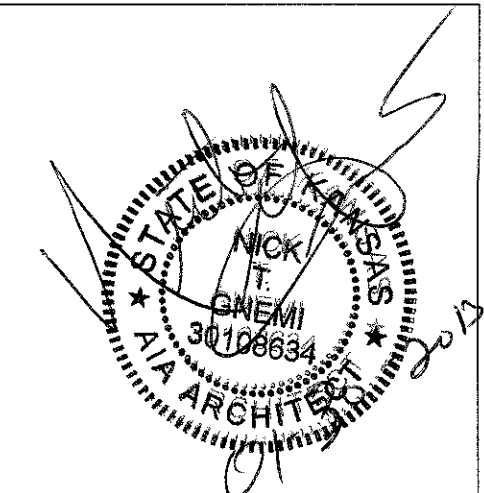
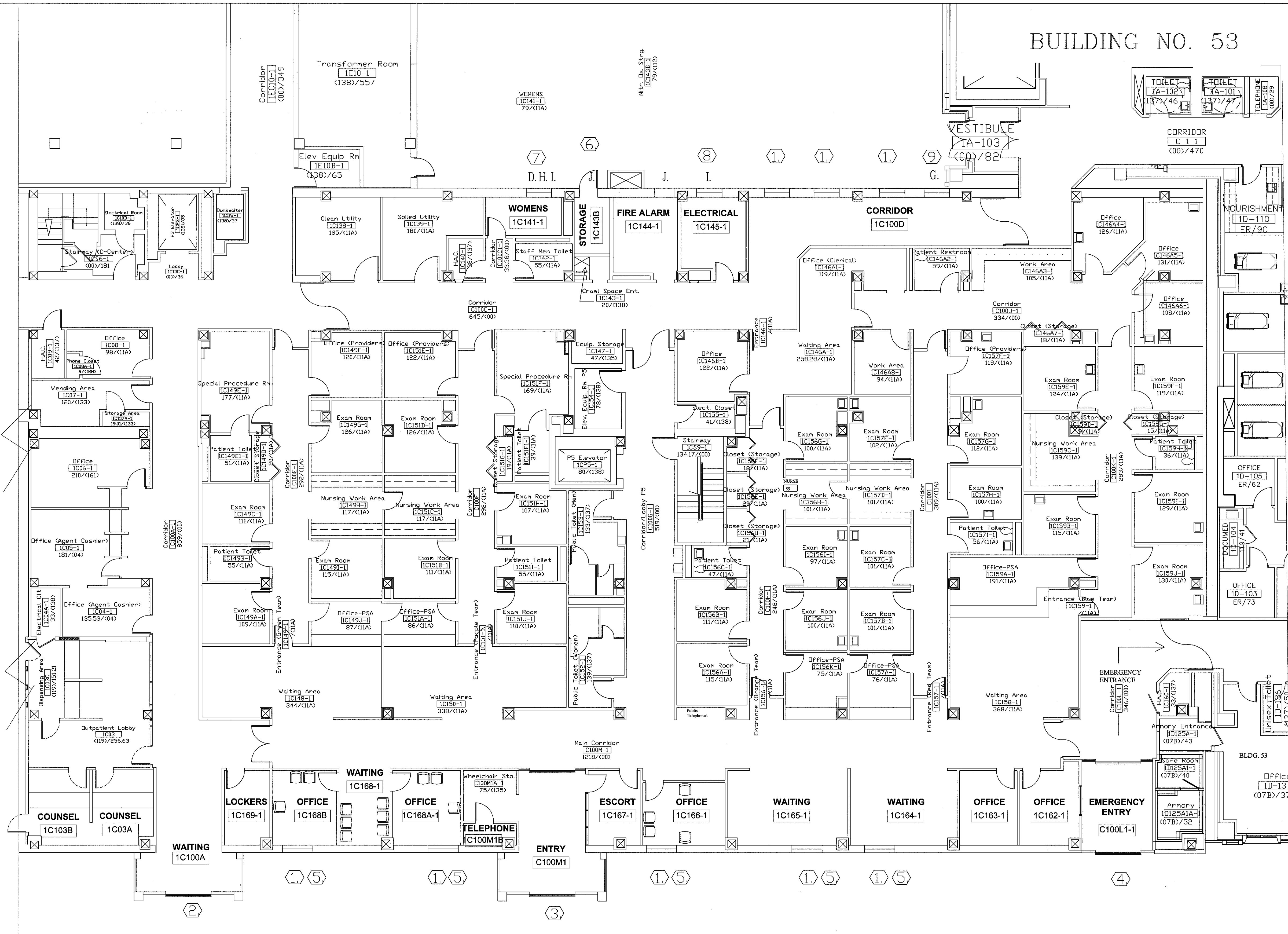
AIC141 DUCT THROUGH SPANDREL



1C100D-1 WINDOW UP AGAINST BLDG 53

FIRST FLOOR PLAN C-WING

BUILDING NO. 1



Dept. of Veterans Affairs
Jack C. Montgomery
Medical Center
1011 Honor Height Drive
Muskogee, Oklahoma 74401

APPROVED:
APPROVED:
APPROVED:
APPROVED:

APPROVED: President A.F.G.E. 2250
APPROVED:
APPROVED:
APPROVED:

APPROVED: Energy Engineer
APPROVED: Safety Manager
APPROVED: Infection Control Nurse
APPROVED: Industrial Hygienist

APPROVED: Medical Center Director
APPROVED: Associate Director
APPROVED: Chief of Staff
APPROVED: Chief of Engineering Service

DRAWING TITLE
C WING
FIRST FLOOR PLAN
PROJECT NO.
623-12-102
CONTRACT NO.
VA256612C0232
BUILDING NO.
Building #1

PROJECT TITLE
REPLACE WINDOWS
BUILDING #1
DESIGNED BY:
PROUD VETERANS
DRAWN BY:
AS
CHECKED BY:
NTG
LOCATION
Jack C. Montgomery VA Medical Center

DATE
27 DECEMBER 2012
SCALE
1/8" = 1'-0"
DRAWING NO.
A2.2
DWG. 10 OF 31

Department of
Veterans Affairs