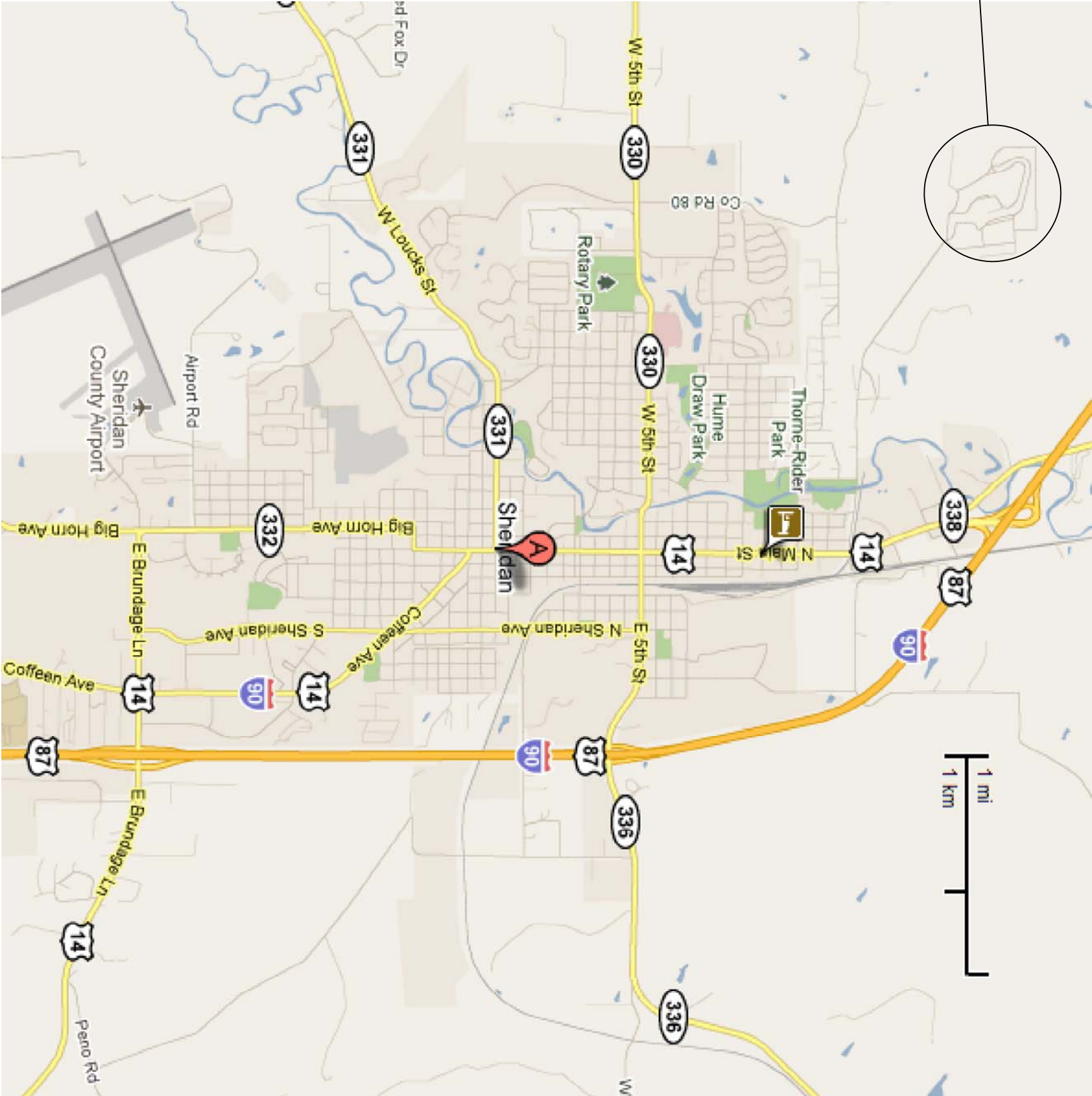
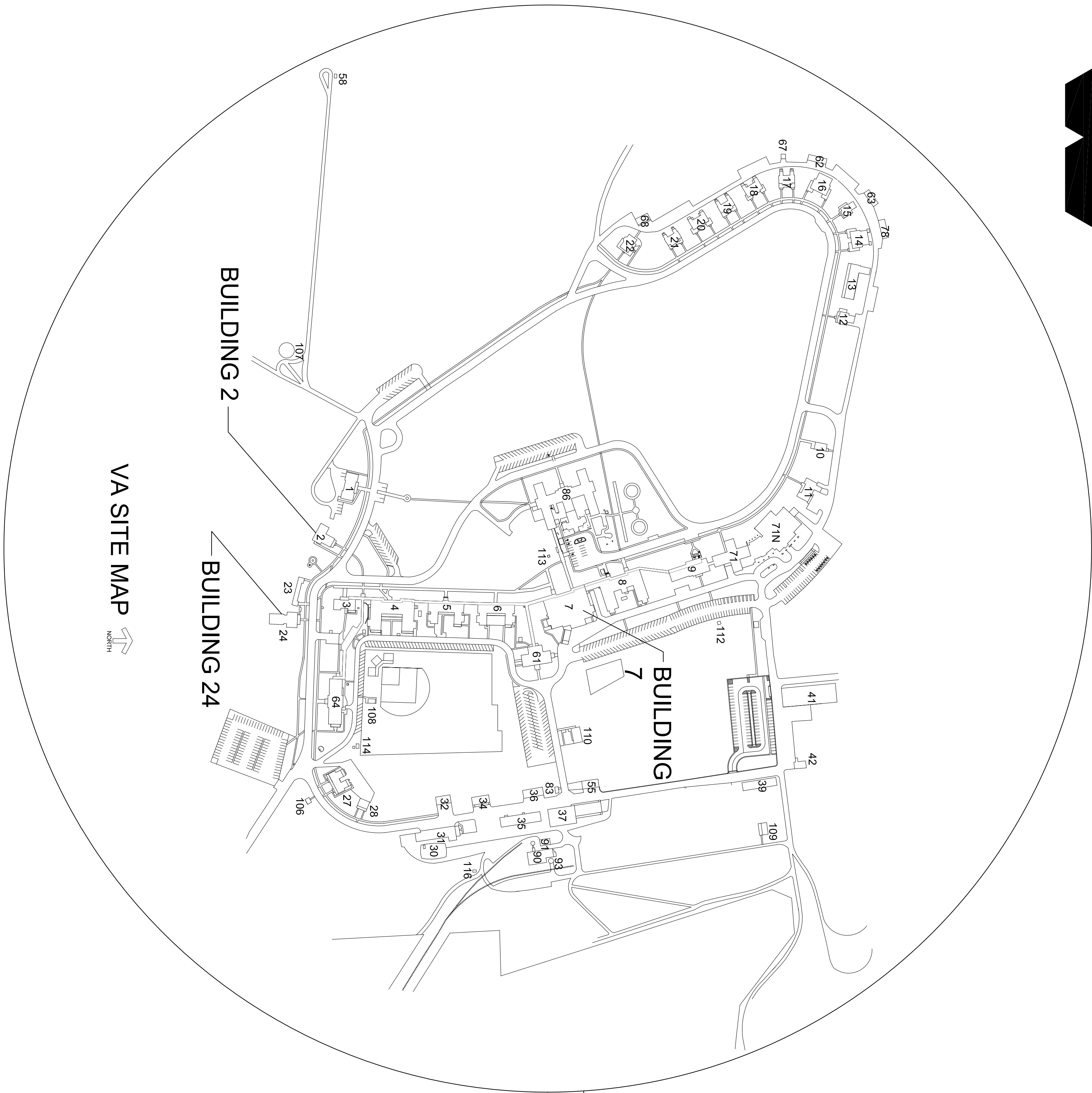


# MECHANICAL WORK B7, 24, 3-6

JANUARY 29, 2013

## SHEET INDEX

- COVER – AREA AND SITE MAPS AND SHEET INDEX
- M1 – CHILLED WATER LOOP PLAN
- M2 – CHILLED WATER LOOP DETAILS
- M3 – LIBRARY AHU PLAN AND DETAILS
- M4 – LIBRARY AHU PIPING
- M5 – LIBRARY AHU CONTROLS
- M6 – B24 WATER HEATER

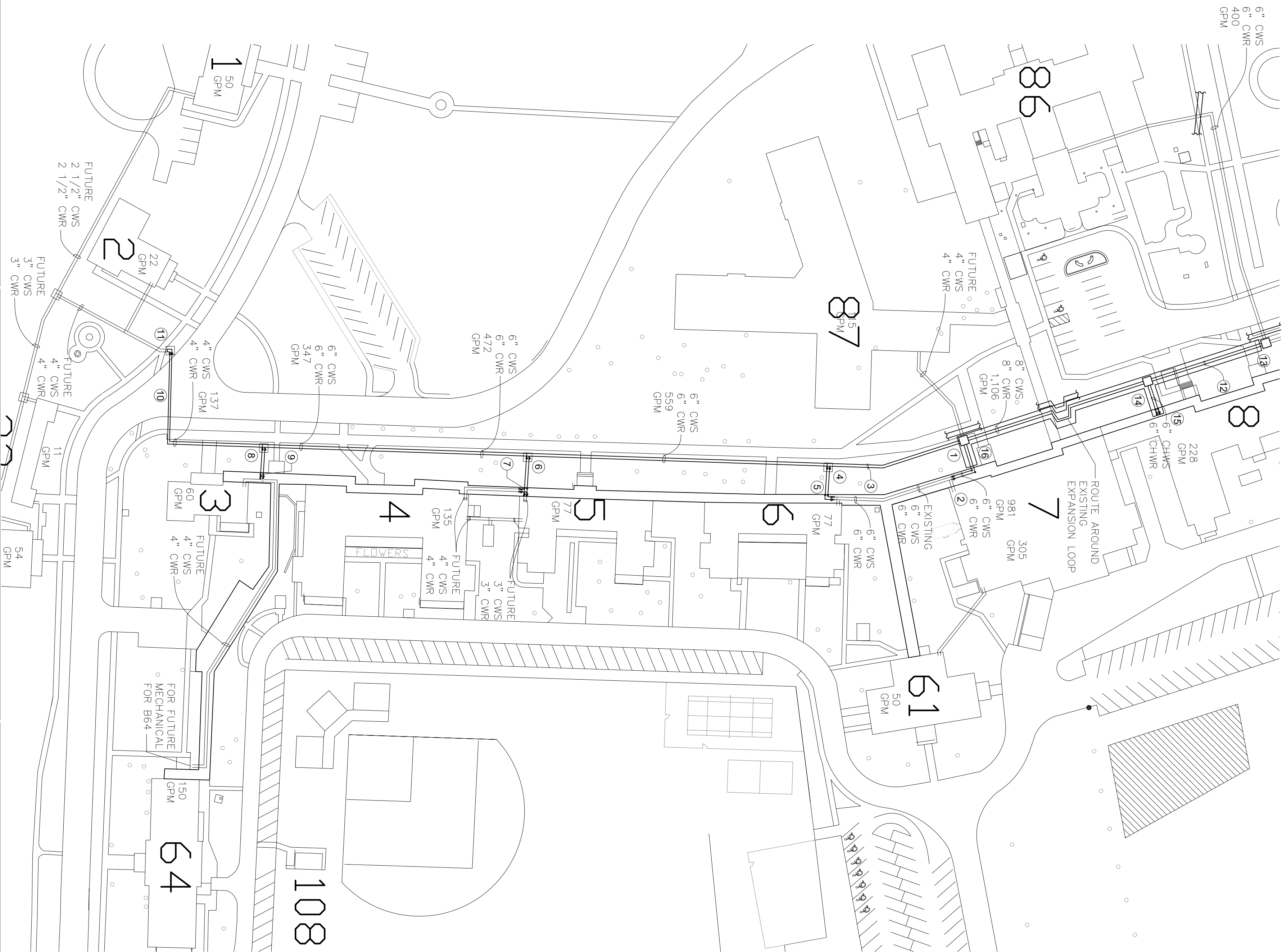
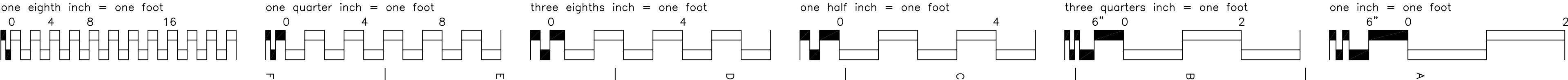


## AREA MAP



--	--	--	--	--	--	--	--	--	--	--	--	--	--	--	--	--	--	--	--	--	--	--	--	--	--	--	--	--	--	--	--	--	--	--	--	--	--	--	--	--	--	--	--	--	--	--	--	--	--	--	--	--	--	--	--	--	--	--	--	--	--	--	--	--	--	--	--	--	--	--	--	--	--	--	--	--	--	--	--	--	--	--	--	--	--	--	--	--	--	--	--	--	--	--	--	--	--	--	--	--	--	--	--	--	--	--	--	--	--	--	--	--	--	--	--	--	--	--	--	--	--	--	--	--	--	--	--	--	--	--	--	--	--	--	--	--	--	--	--	--	--	--	--	--	--	--	--	--	--	--	--	--	--	--	--	--	--	--	--	--	--	--	--	--	--	--	--	--	--	--	--	--	--	--	--	--	--	--	--	--	--	--	--	--	--	--	--	--	--	--	--	--	--	--	--	--	--	--	--	--	--	--	--	--	--	--	--	--	--	--	--	--	--	--	--	--	--	--	--	--	--	--	--	--	--	--	--	--	--	--	--	--	--	--	--	--	--	--	--	--	--	--	--	--	--	--	--	--	--	--	--	--	--	--	--	--	--	--	--	--	--	--	--	--	--	--	--	--	--	--	--	--	--	--	--	--	--	--	--	--	--	--	--	--	--	--	--	--	--	--	--	--	--	--	--	--	--	--	--	--	--	--	--	--	--	--	--	--	--	--	--	--	--	--	--	--	--	--	--	--	--	--	--	--	--	--	--	--	--	--	--	--	--	--	--	--	--	--	--	--	--	--	--	--	--	--	--	--	--	--	--	--	--	--	--	--	--	--	--	--	--	--	--	--	--	--	--	--	--	--	--	--	--	--	--	--	--	--	--	--	--	--	--	--	--	--	--	--	--	--	--	--	--	--	--	--	--	--	--	--	--	--	--	--	--	--	--	--	--	--	--	--	--	--	--	--	--	--	--	--	--	--	--	--	--	--	--	--	--	--	--	--	--	--	--	--	--	--	--	--	--	--	--	--	--	--	--	--	--	--	--	--	--	--	--	--	--	--	--	--	--	--	--	--	--	--	--	--	--	--	--	--	--	--	--	--	--	--	--	--	--	--	--	--	--	--	--	--	--	--	--	--	--	--	--	--	--	--	--	--	--	--	--	--	--	--	--	--	--	--	--	--	--	--	--	--	--	--	--	--	--	--	--	--	--	--	--	--	--	--	--	--	--	--	--	--	--	--	--	--	--	--	--	--	--	--	--	--	--	--	--	--	--	--	--	--	--	--	--	--	--	--	--	--	--	--	--	--	--	--	--	--	--	--	--	--	--	--	--	--	--	--	--	--	--	--	--	--	--	--	--	--	--	--	--	--	--	--	--	--	--	--	--	--	--	--	--	--	--	--	--	--	--	--	--	--	--	--	--	--	--	--	--	--	--	--	--	--	--	--	--	--	--	--	--	--	--	--	--	--	--	--	--	--	--	--	--	--	--	--	--	--	--	--	--	--	--	--	--	--	--	--	--	--	--	--	--	--	--	--	--	--	--	--	--	--	--	--	--	--	--	--	--	--	--	--	--	--	--	--	--	--	--	--	--	--	--	--	--	--	--	--	--	--	--	--	--	--	--	--	--	--	--	--	--	--	--	--	--	--	--	--	--	--	--	--	--	--	--	--	--	--	--	--	--	--	--	--	--	--	--	--	--	--	--	--	--	--	--	--	--	--	--	--	--	--	--	--	--	--	--	--	--	--	--	--	--	--	--	--	--	--	--	--	--	--	--	--	--	--	--	--	--	--	--	--	--	--	--	--	--	--	--	--	--	--	--	--	--	--	--	--	--	--	--	--	--	--	--	--	--	--	--	--	--	--	--	--	--	--	--	--	--	--	--	--	--	--	--	--	--	--	--	--	--	--	--	--	--	--	--	--	--	--	--	--	--	--	--	--	--	--	--	--	--	--	--	--	--	--	--	--	--	--	--	--	--	--	--	--	--	--	--	--	--	--	--	--	--	--	--	--	--	--	--	--	--	--	--	--	--	--	--	--	--	--	--	--	--	--	--	--	--	--	--	--	--	--	--	--	--	--	--	--	--	--	--	--	--	--	--	--	--	--	--	--	--	--	--	--	--	--	--	--	--	--	--	--	--	--	--	--	--	--	--	--	--	--	--	--	--	--	--	--	--	--	--	--	--	--	--	--	--	--	--	--	--	--	--	--	--	--	--	--	--	--	--	--	--	--	--	--	--	--	--	--	--	--	--	--	--	--	--	--	--	--	--	--	--	--	--	--	--	--	--	--	--	--	--	--	--	--	--	--	--	--	--	--	--	--	--	--	--	--	--	--	--	--	--	--	--	--	--	--	--	--	--	--	--	--	--	--	--	--	--	--	--	--	--	--	--	--	--	--	--	--	--	--	--	--	--	--	--	--	--	--	--	--	--	--	--	--	--	--	--	--	--	--	--	--	--	--	--	--	--	--	--	--	--	--	--	--	--	--	--	--	--	--	--	--	--	--	--	--	--	--	--	--	--	--	--	--	--	--	--	--	--	--	--	--	--	--	--	--	--	--	--	--	--	--	--	--	--	--	--	--	--	--	--	--	--	--	--	--	--	--	--	--	--	--	--	--	--	--	--	--	--	--	--	--	--	--	--	--	--	--	--	--	--





- GENERAL NOTES:
- A. CONTRACTOR SHALL PROVIDE ALL TRENCHING AND BORING AS REQUIRED FOR THE INSTALLATION OF THE NEW CHILLED WATER LOOP PIPING. CONTRACTOR SHALL PROVIDE REPAIR OF ALL DISTURBED CONCRETE OR ASPHALT AS WELL AS HYDRO-SEEDING OR SOD FOR ALL DISTURBED TUFF. COMPACT ALL TRENCHING IN 8\"/>

SPECIFIC NOTES:

- ① CONNECT TO EXISTING 6\"/>
- ② ADDITIVE ALTERNATE NO. 1:  
6\"/>
- ③ PIPING IN TRENCH PER DETAIL 2/M1.
- ④ PROVIDE CAST-IN-PLACE CONCRETE MANHOLE. REFER TO DETAIL 3/M2 AND 7/M2. PROVIDE 6\"/>
- ⑤ ADDITIVE ALTERNATE NO. 2:  
6\"/>
- ⑥ PROVIDE CAST-IN-PLACE CONCRETE MANHOLE. REFER TO DETAIL 3/M2 AND 4/M2. PROVIDE 4\"/>
- ⑦ ADDITIVE ALTERNATE NO. 3:  
4\"/>
- ⑧ PROVIDE CAST-IN-PLACE CONCRETE MANHOLE. REFER TO DETAIL 3/M2 AND 5/M2. PROVIDE 4\"/>
- ⑨ ADDITIVE ALTERNATE NO. 4:  
4\"/>
- ⑩ PROVIDE BORE HOLES FOR ROUTING CHWS AND CHWR UNDERNEATH THE STREET. PROVIDE PVC SLEEVE UNDER THE STREET TO PROTECT INSULATED 4\"/>
- ⑪ PROVIDE CAST-IN-PLACE CONCRETE MANHOLE. REFER TO DETAIL 3/M2 AND 6/M2. PROVIDE 4\"/>
- ⑫ ADDITIVE ALTERNATE NO. 5:  
ALL WORK TO PROVIDE 8\"/>
- ⑬ CONNECT TO EXISTING 6\"/>
- ⑭ PROVIDE CAST-IN-PLACE CONCRETE MANHOLE. REFER TO DETAIL 3/M2 AND 8/M2. PROVIDE 6\"/>
- ⑮ 6\"/>
- ⑯ PROVIDE CAST-IN-PLACE CONCRETE MANHOLE. REFER TO DETAIL 3/M2 AND 9/M2. PROVIDE 6\"/>

A CHILLED WATER LOOP PLAN

M1

NTS

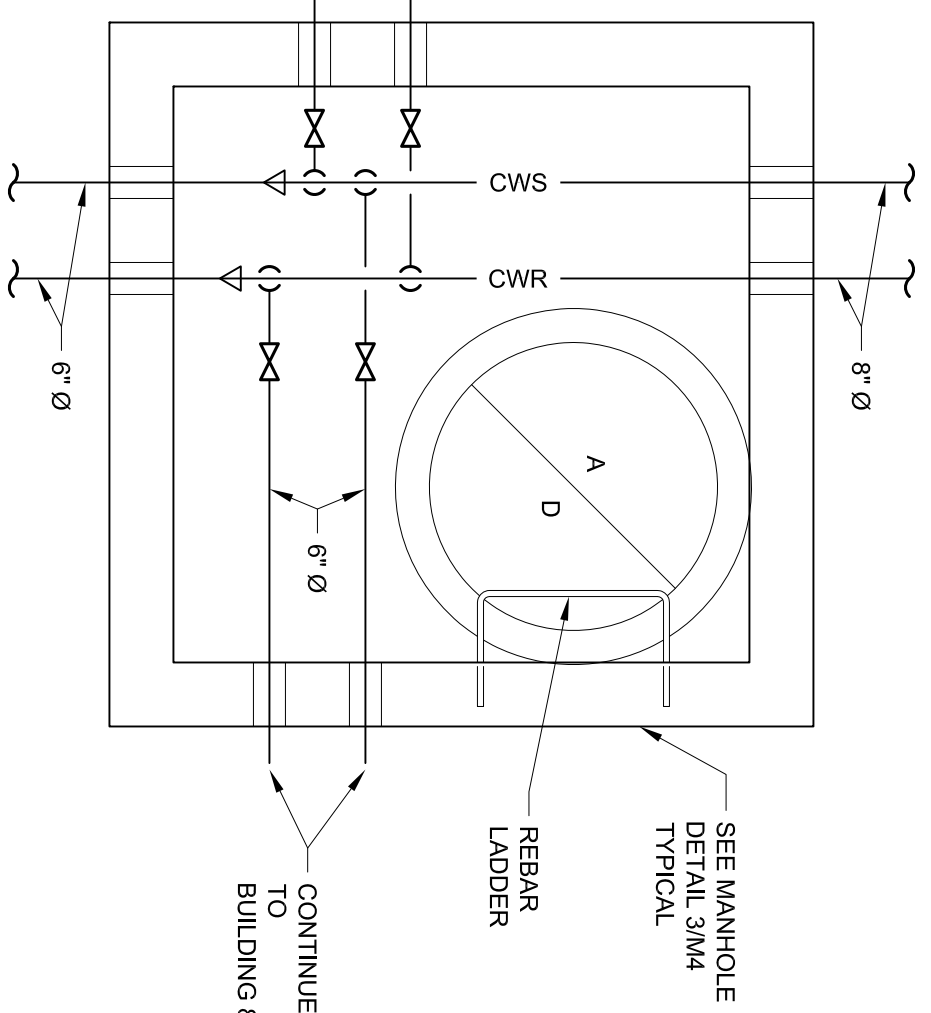
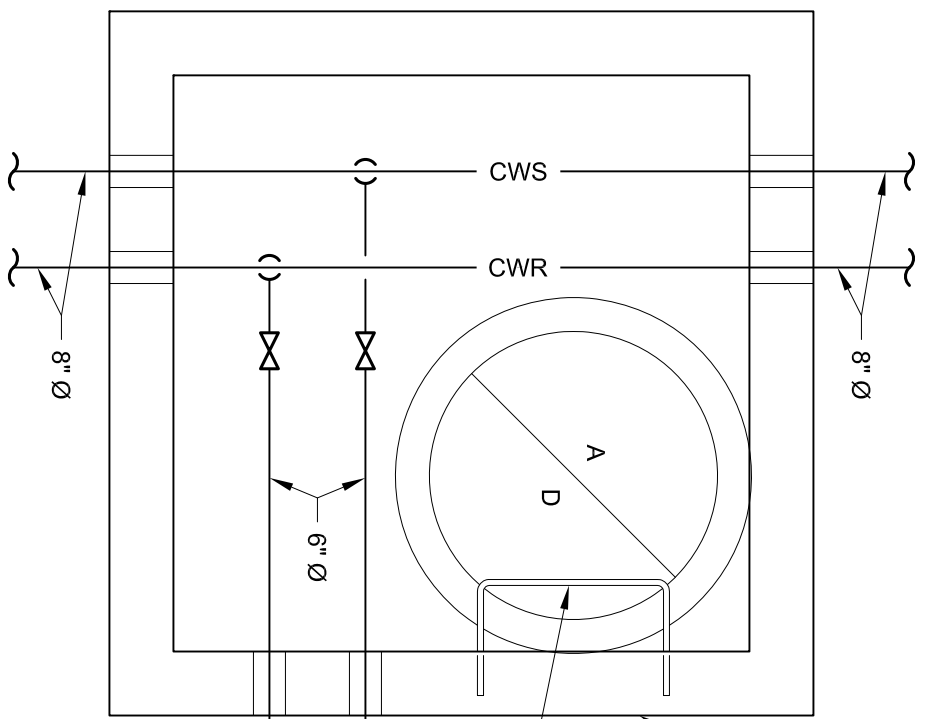
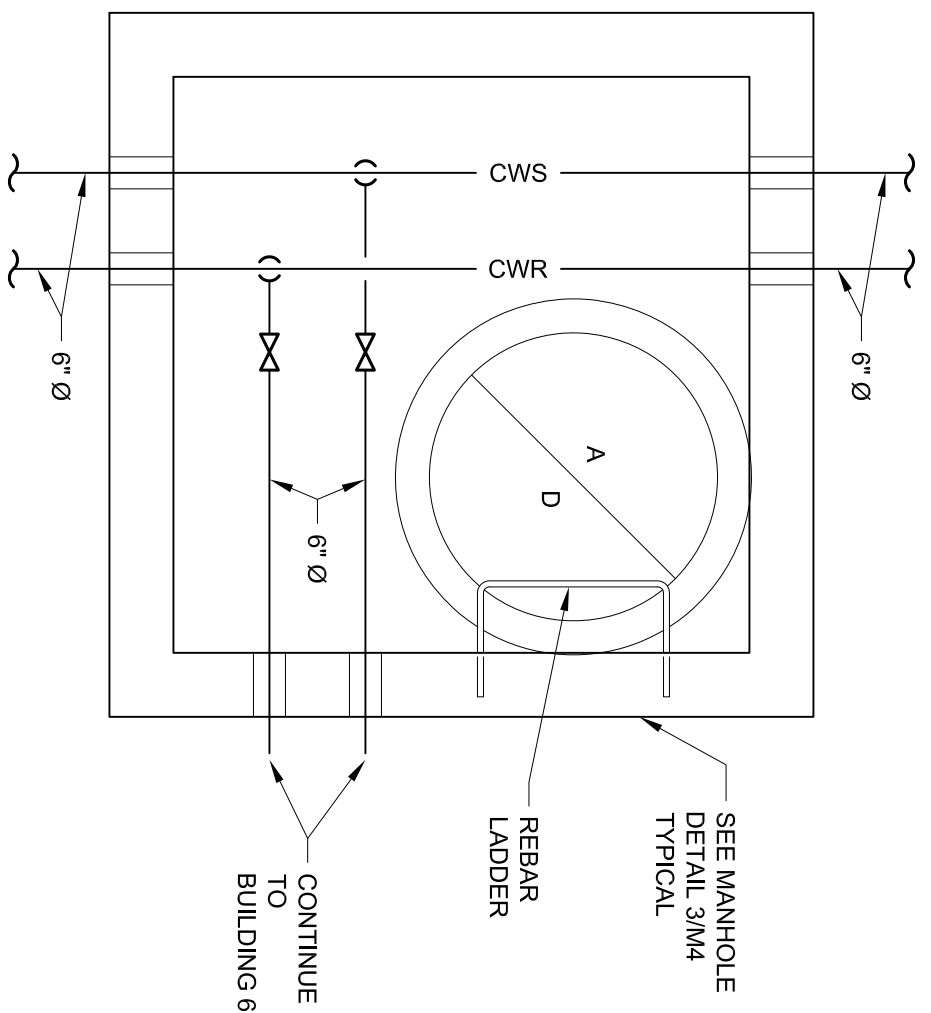
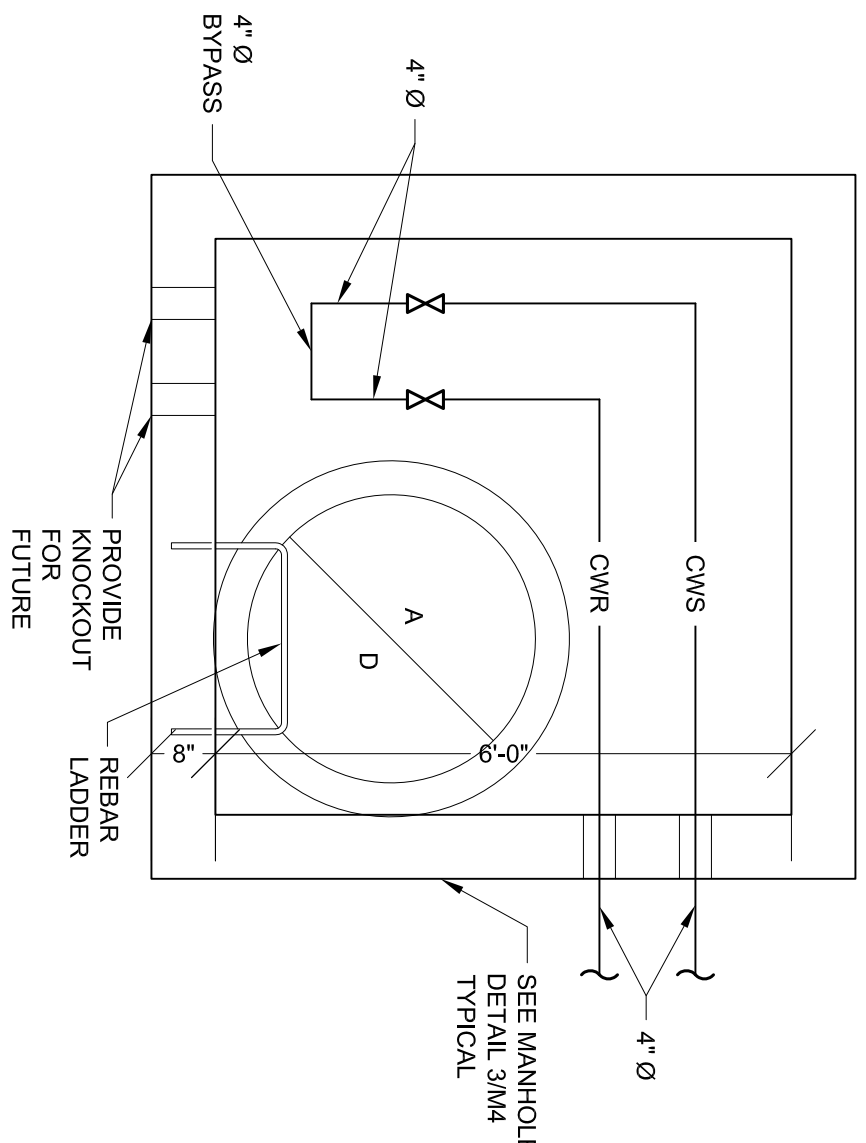
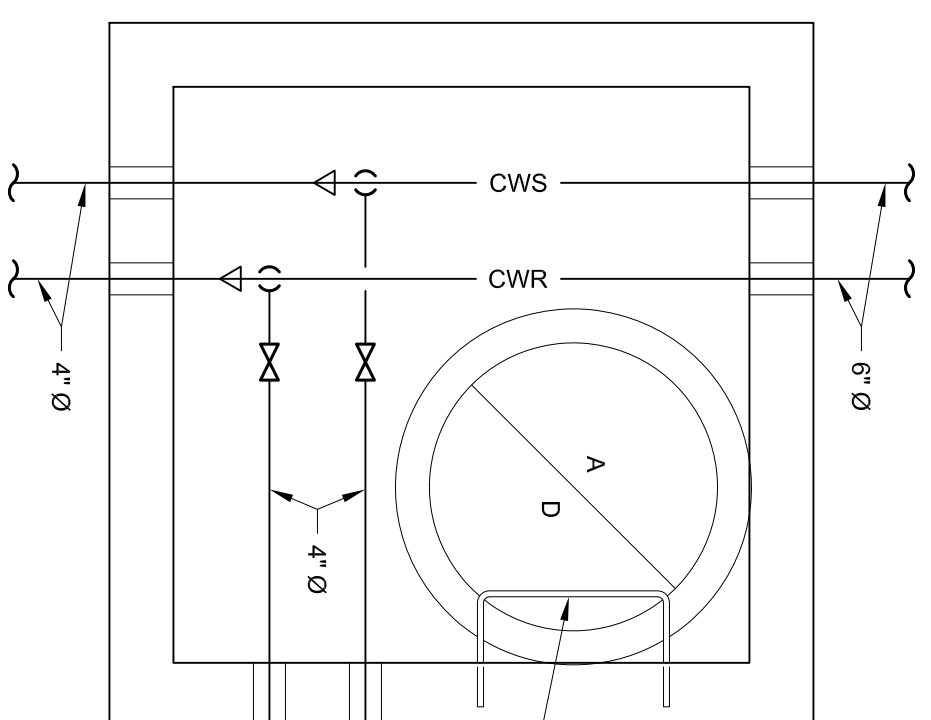
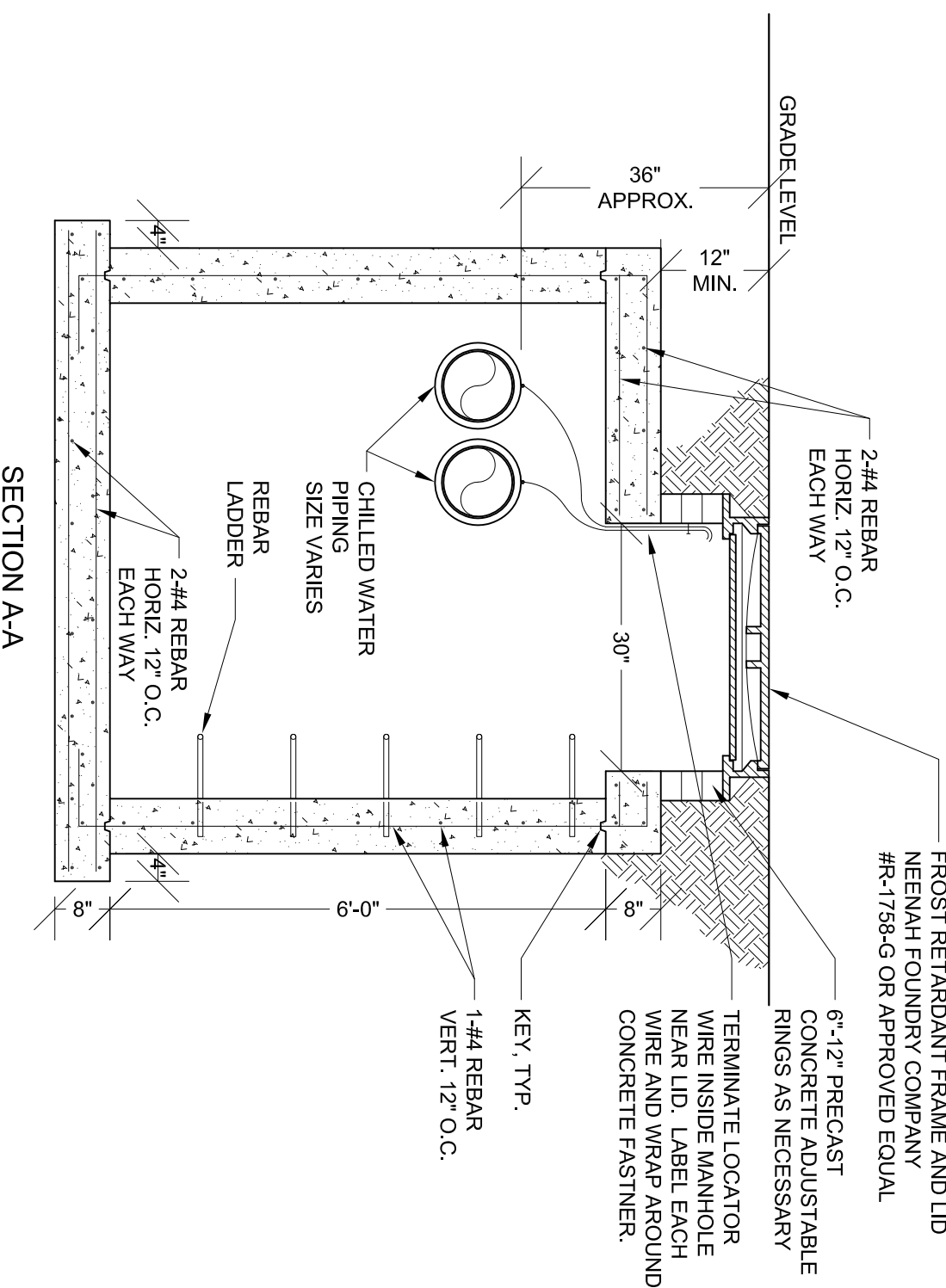
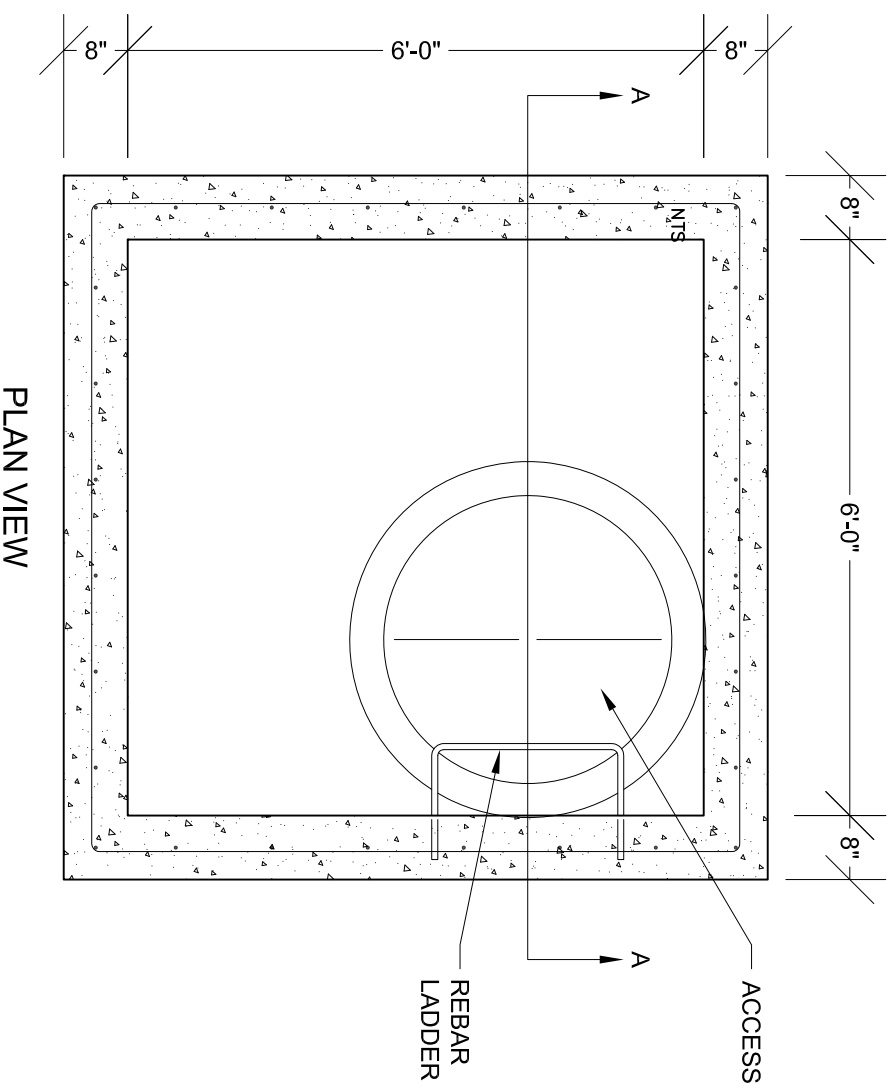
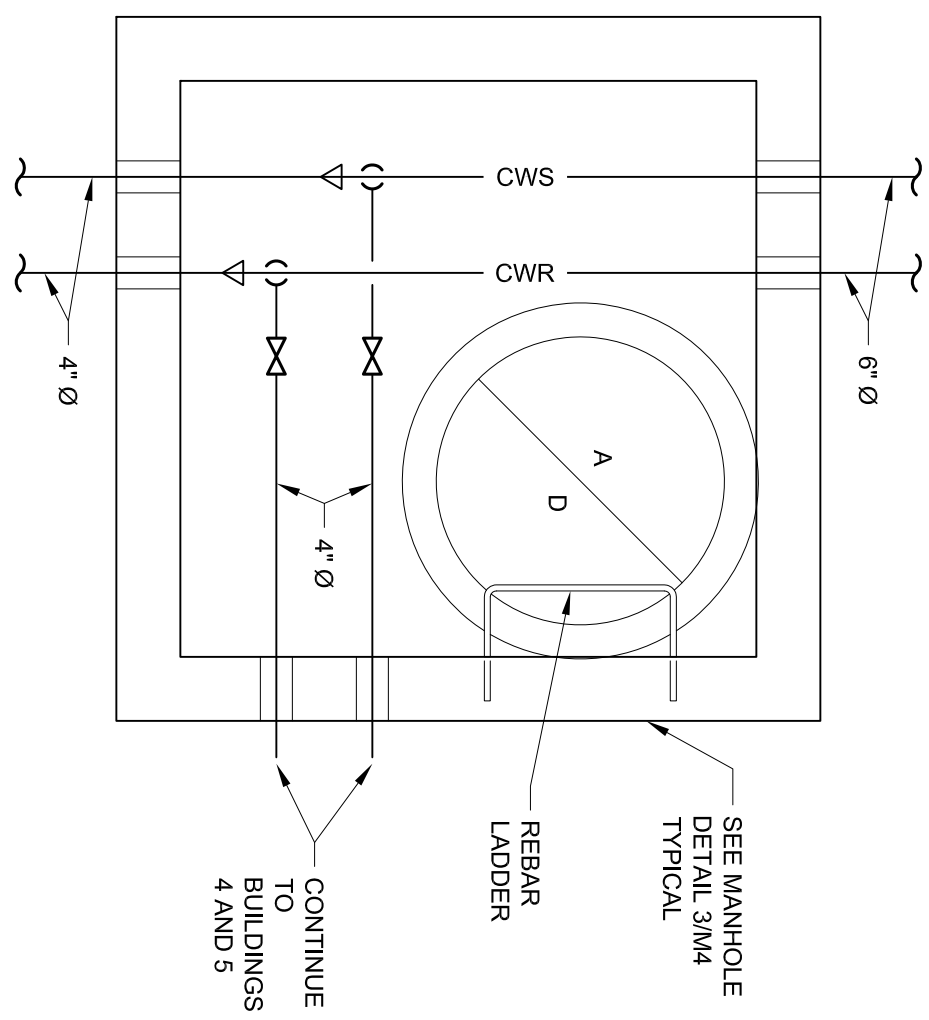
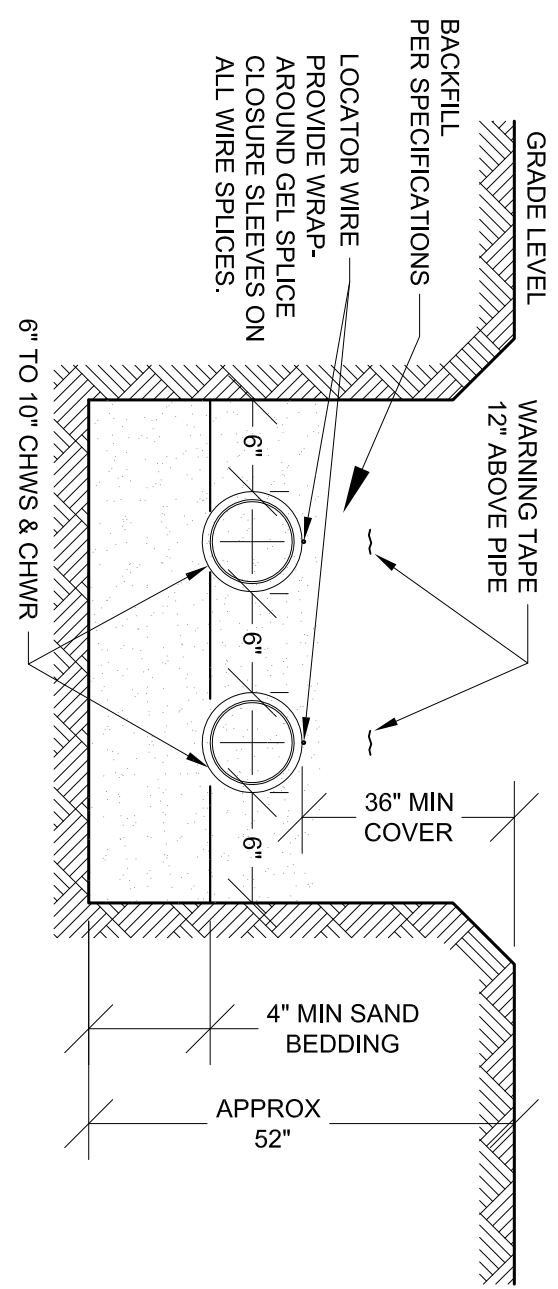
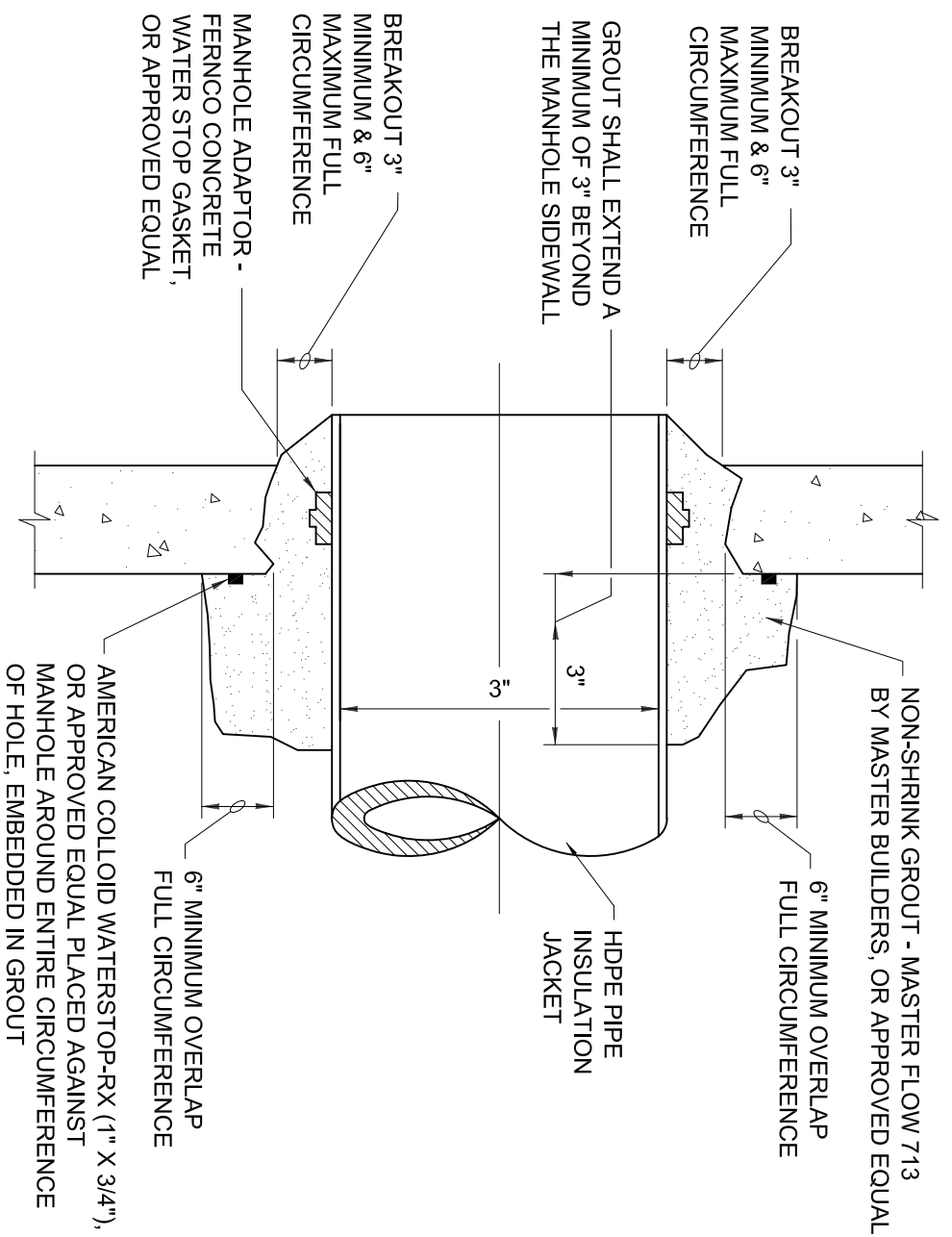
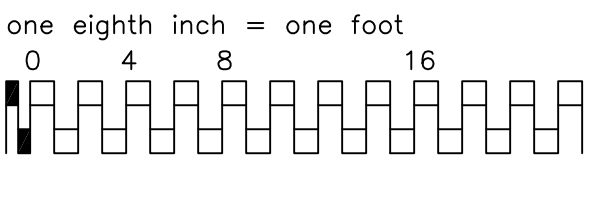
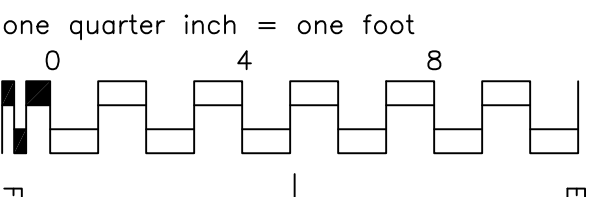
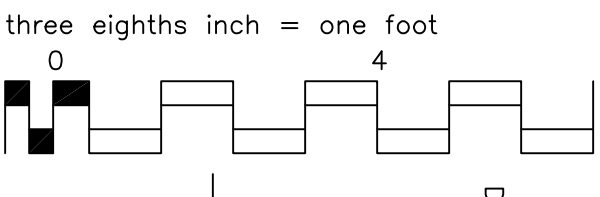
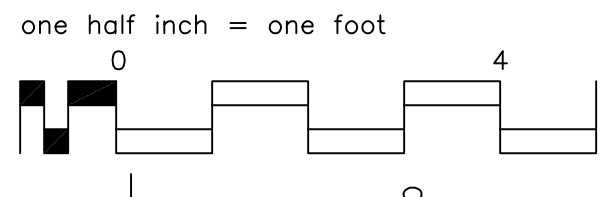
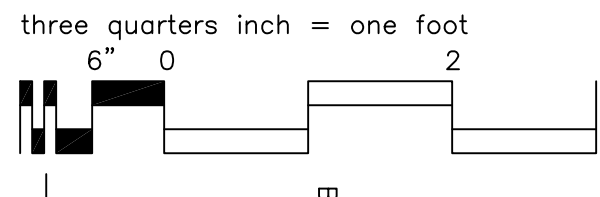
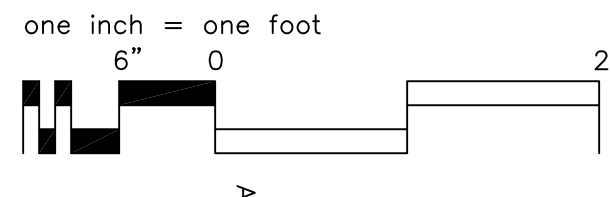
Regions:	Initials	Date

CONSULTANTS:

ARCHITECT/ENGINEERS:

Drawing Title
CHILLED WATER LOOP PLAN
Approved Project Director
DANIEL PAGONE

Project Title	Project Number	Office of Facilities Management
MECHANICAL WORK B7, 24, 3-6	666-13-803	
Location	Building Number	
SHERIDAN, WY	MULTIPLE	
Date	Checked	Dwg. Number
JAN 29, 2013	WELTV	M1
	Drawn	2 of 7
	LAS	
		Department of Veterans Affairs



MANHOLE SCHEMATIC #1

3  
M2

TYPICAL CHILLED WATER MANHOLE DETAIL

NTS

1  
M2

MANHOLE-PIPE CONNECTION DETAIL

2 CHILLED WATER TRENCH DETAIL  
M2

MANHOLE SCHEMATIC #2

MANHOLE SCHEMATIC #3

MANHOLE SCHEMATIC #4

MANHOLE SCHEMATIC #5

MANHOLE SCHEMATIC #5

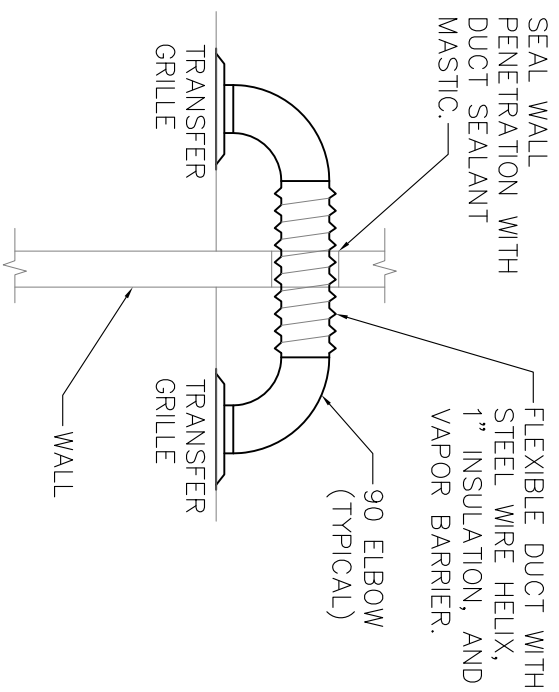
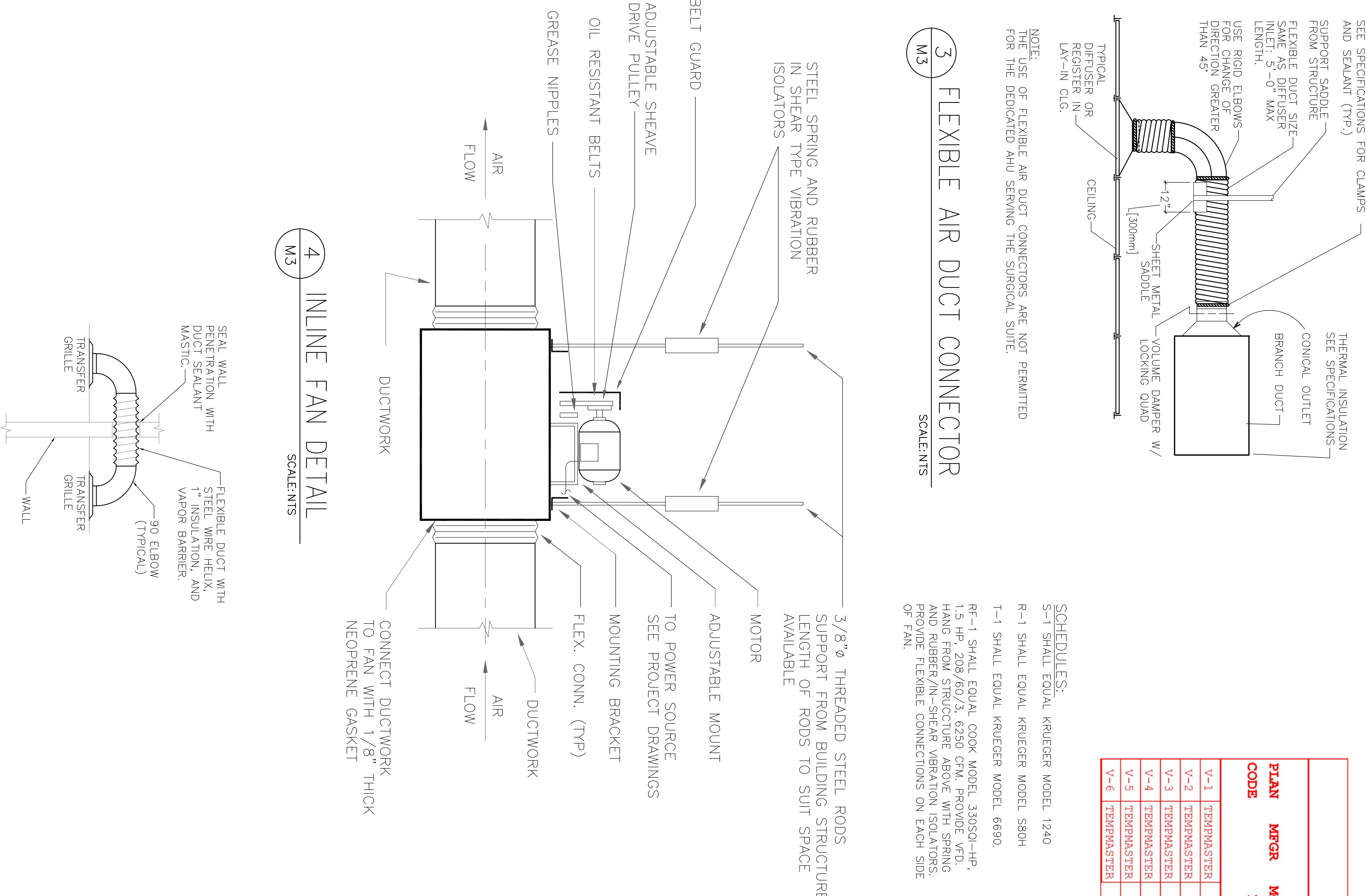
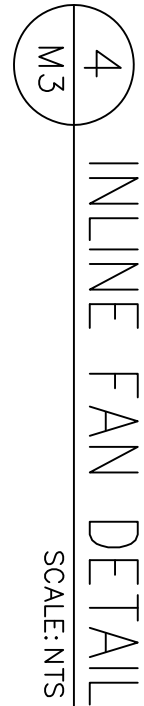
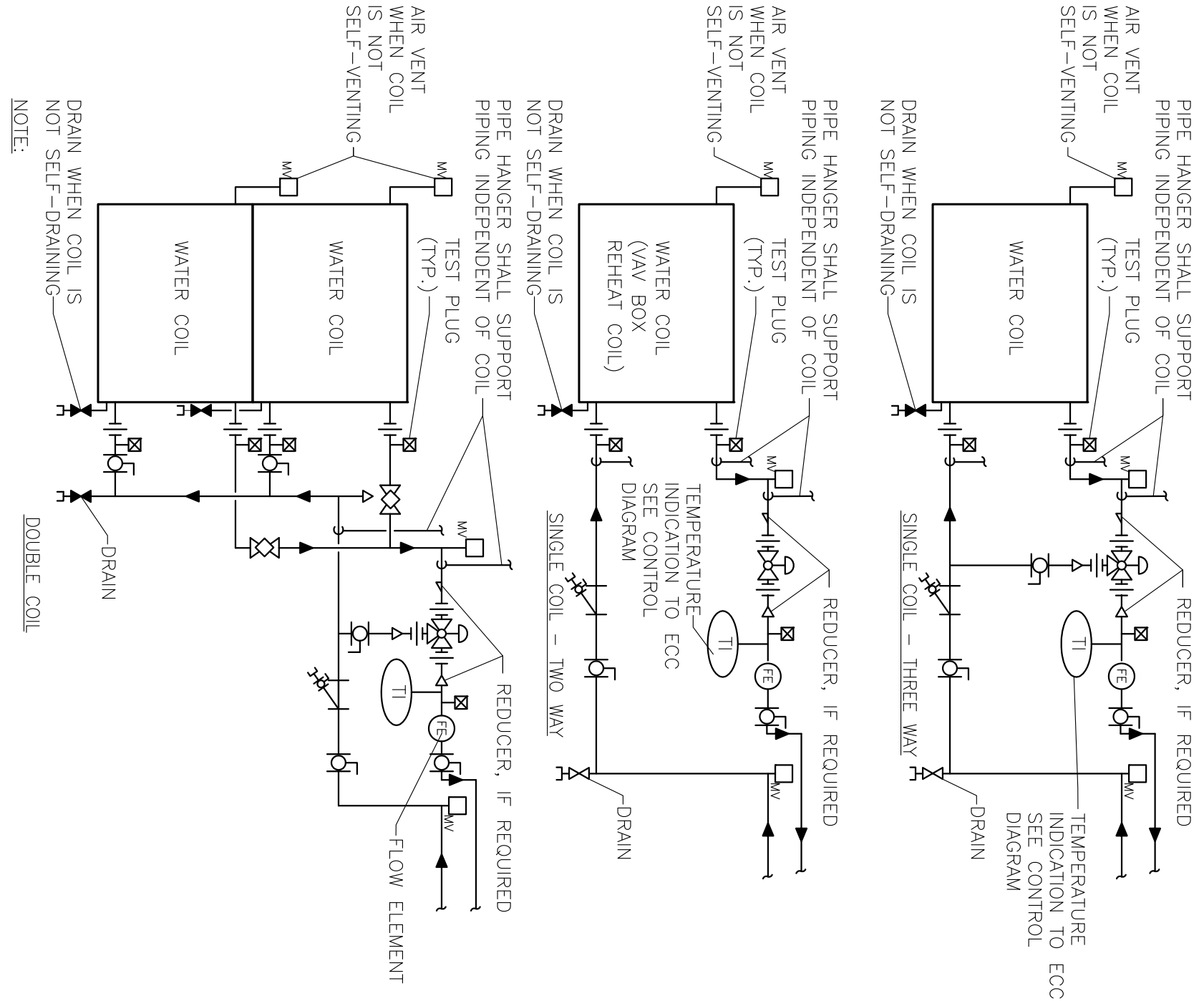
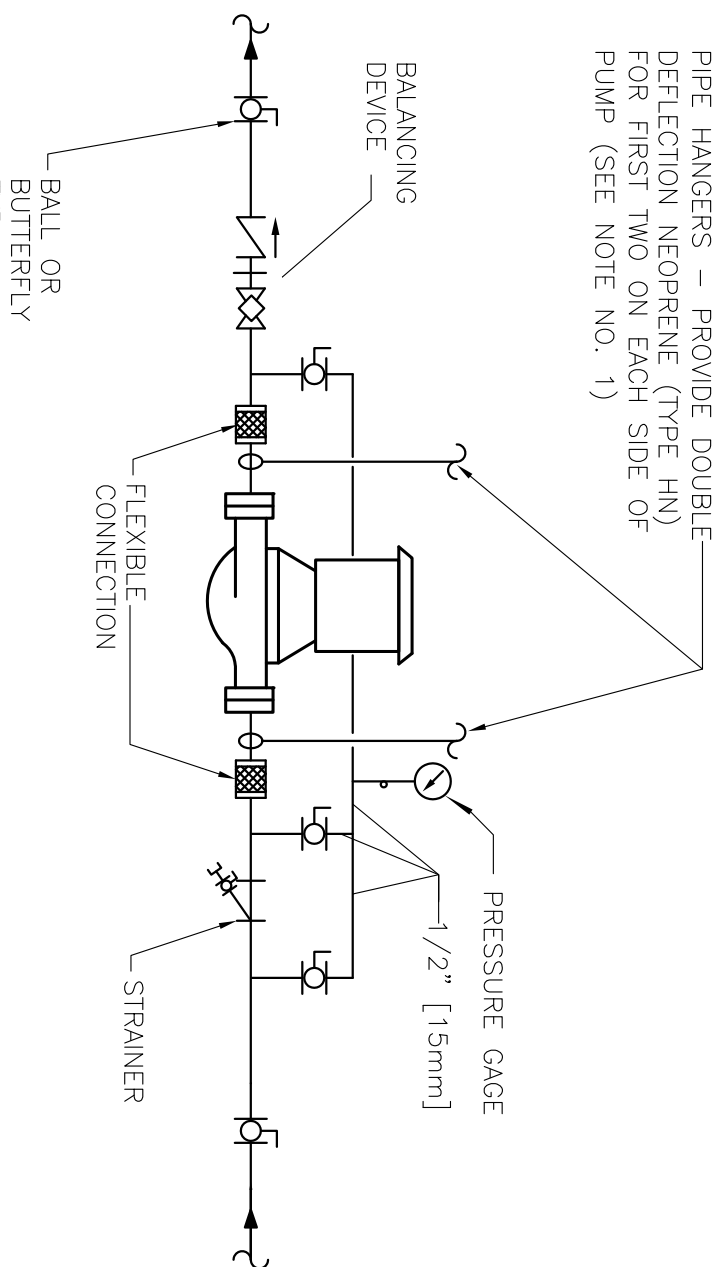
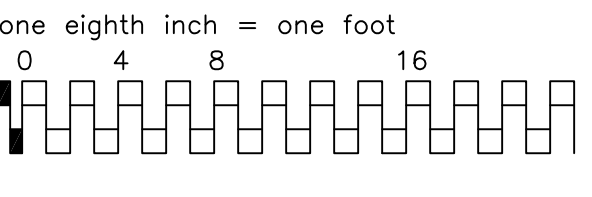
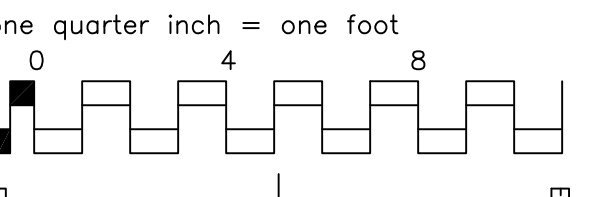
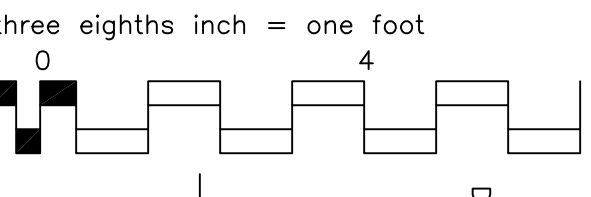
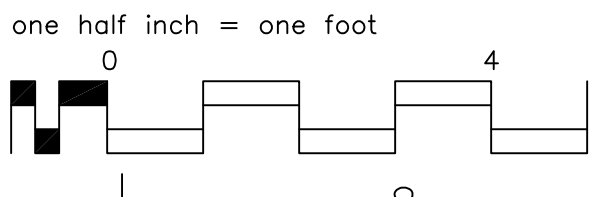
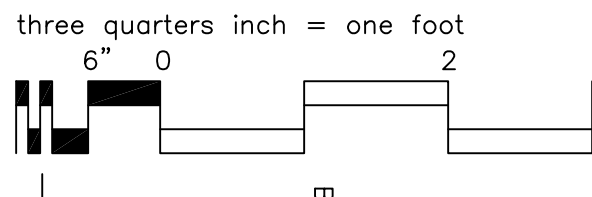
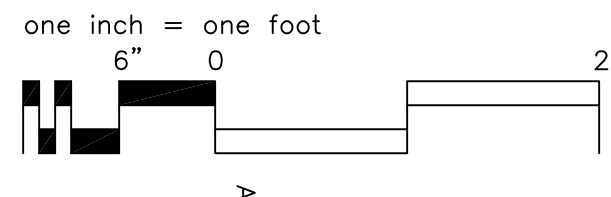
[illegible]

## CONSULTANTS:

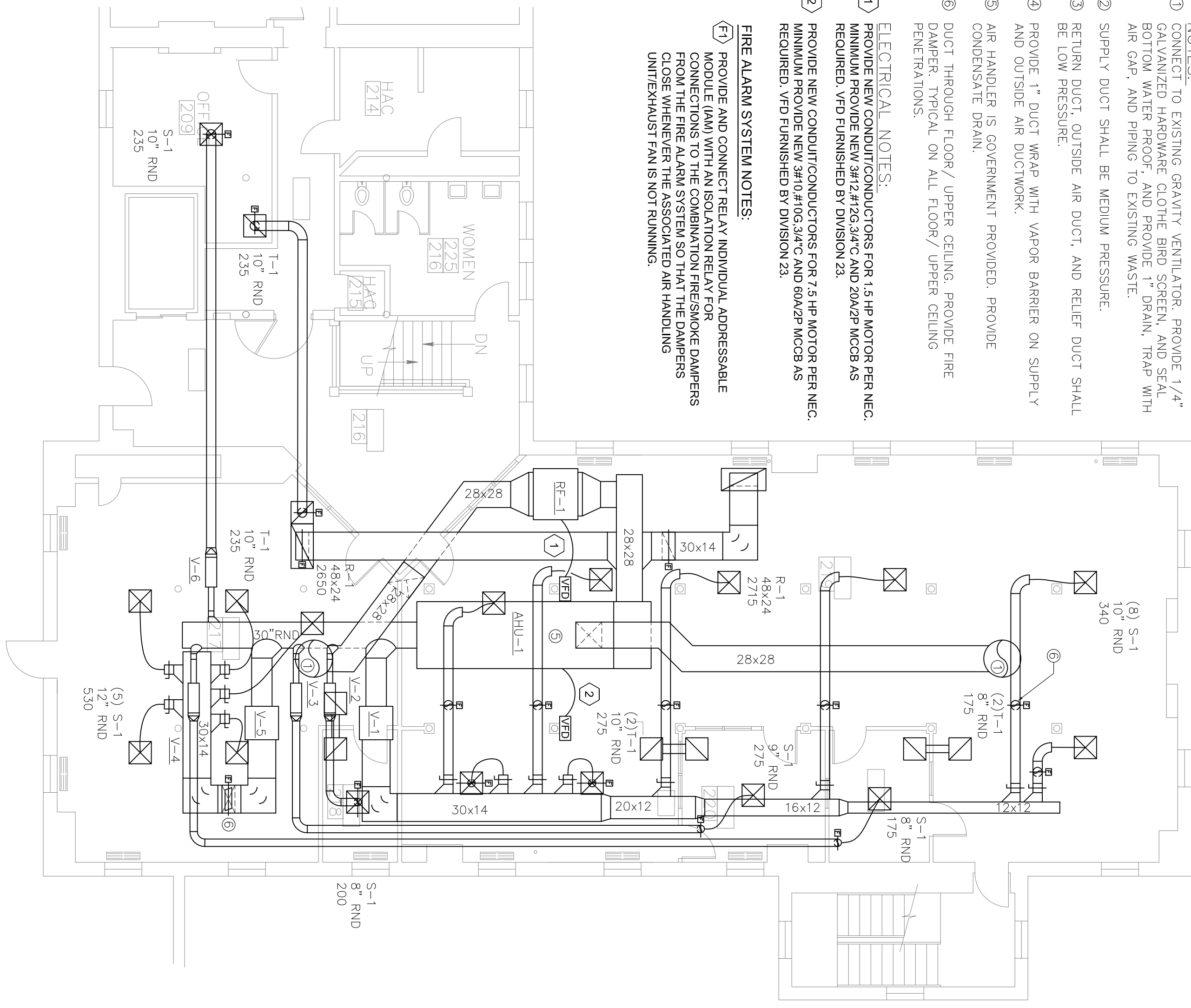
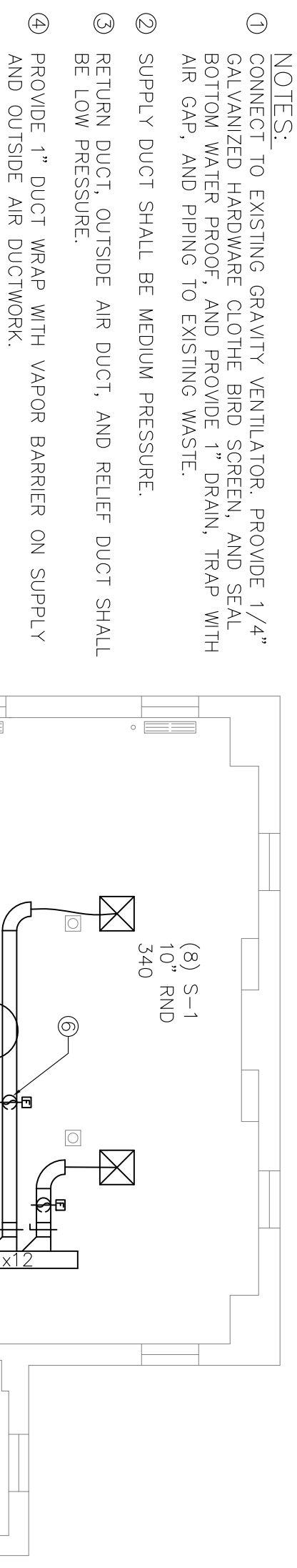
ARCHITECT/ENGINEERS:

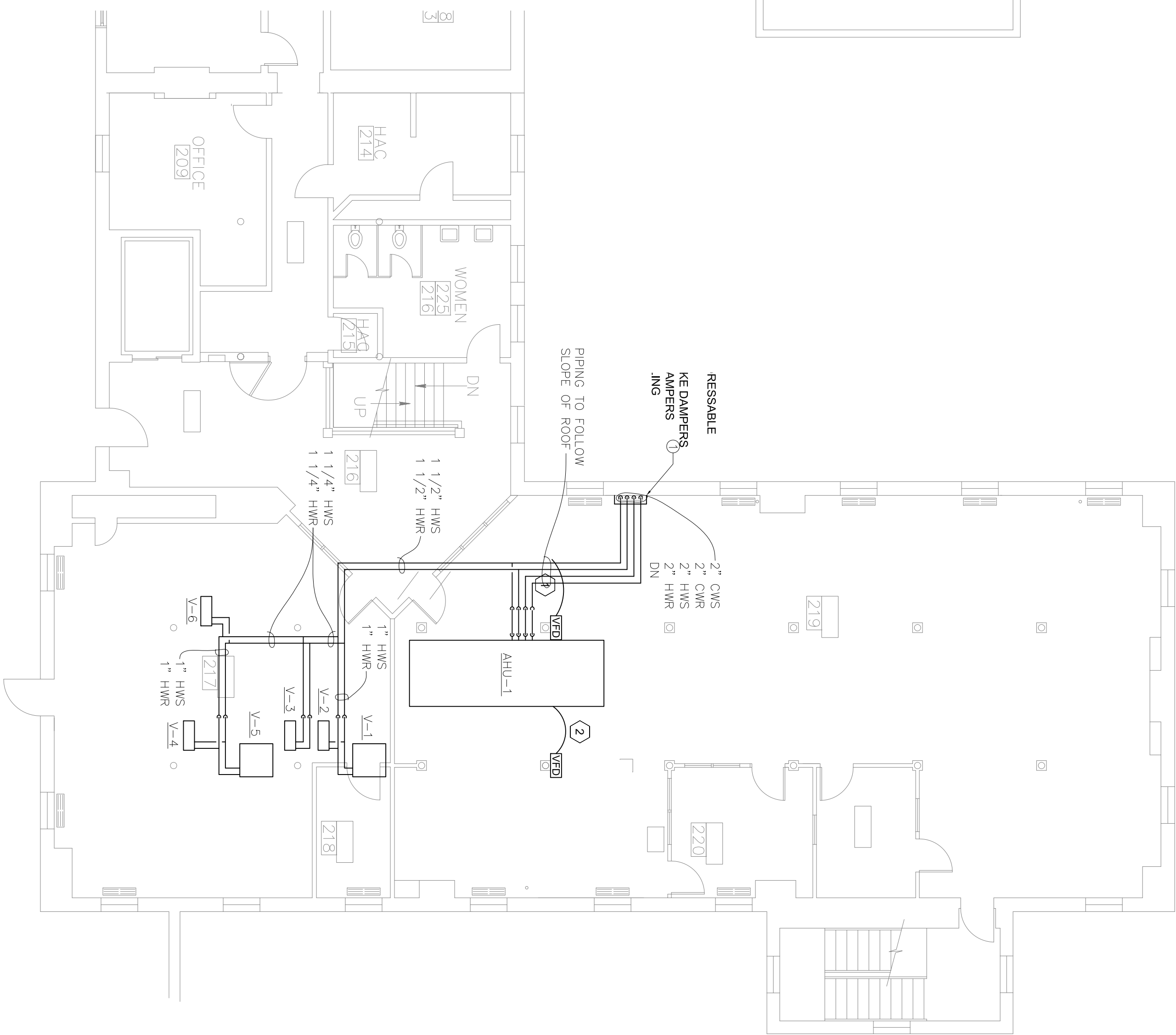
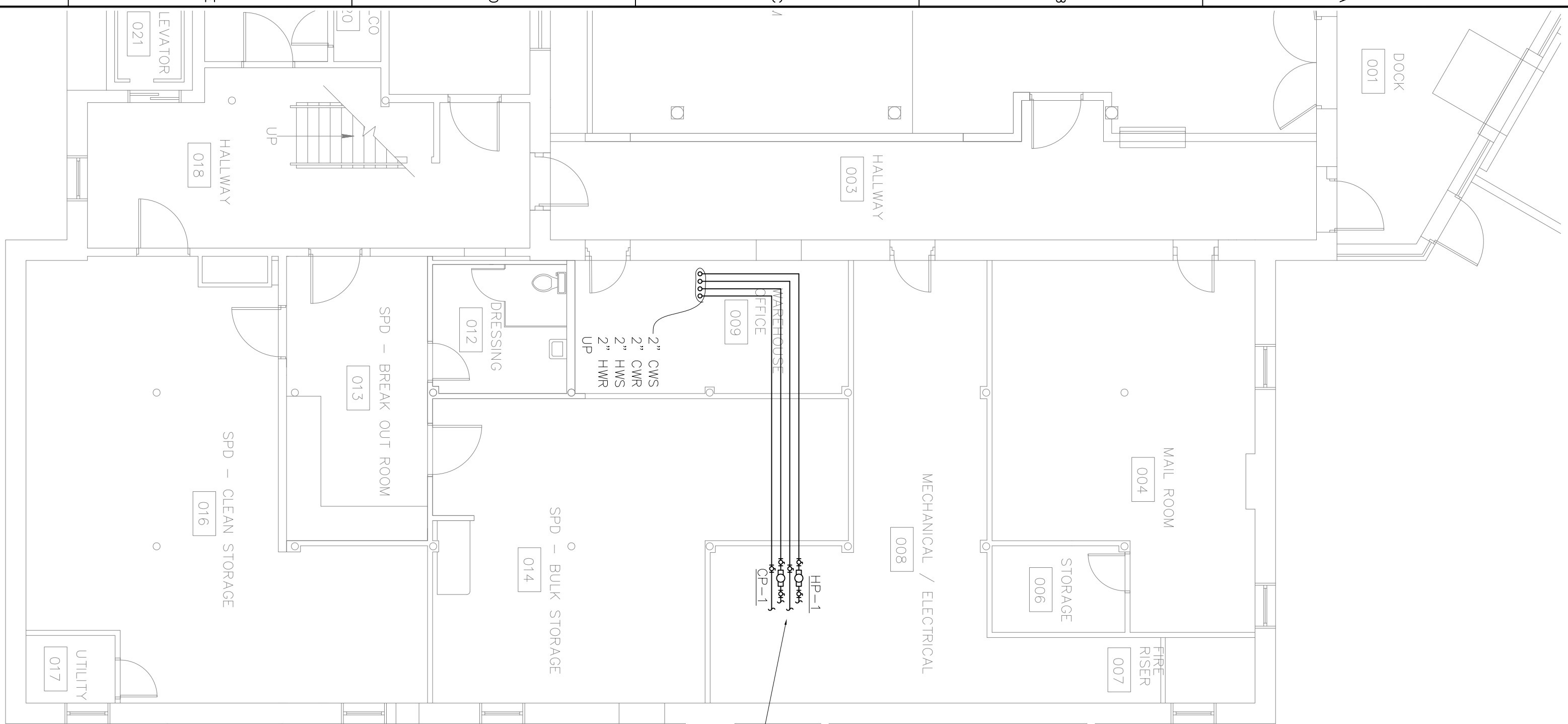
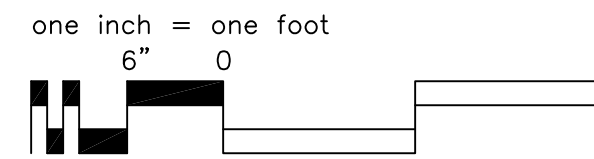
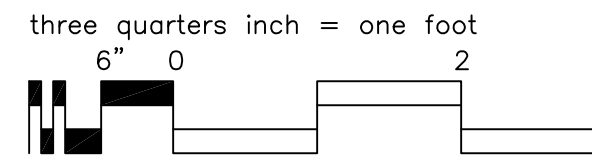
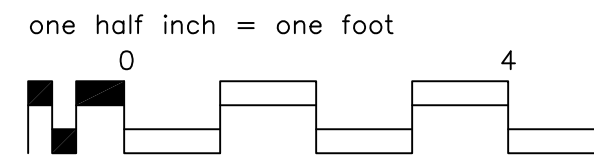
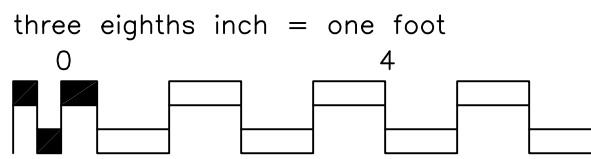
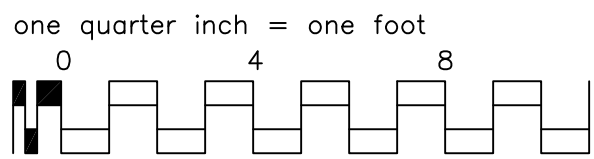
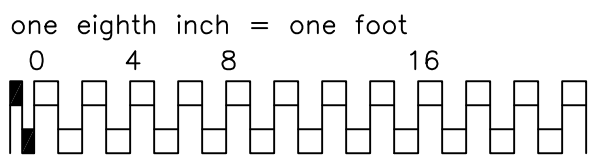
Drawing Title	Project Title MECHANICAL WORK B7, 24, 3-6			Project Number 666-13-803		Office of Facilities Management	
				Building Number MULTIPLE			
				Drawing Number M2			
Approved Project Director DANIEL PAGONE		Location SHERIDAN, WY		Date JAN 29, 2013	Checked WELTY	Drawn LAS	Department of Waterborne Affairs
				Dwg. 3 of 7			





VARIABLE AIR VOLUME SCHEDULE																	
PLAN CODE	MEGR	MODEL NO.	MAX ACFM	MIN ACFM	SIZE INLET SIZE	HEATING COIL										MAX	
						OUTPUT (BTU/H)	SIZE (IN)	ROWS	HW (GPM)	WPD (FT)	EWT (DEG F)	LWT (DEG F)	EAT (DEG F)	LAT (DEG F)	COIL/BOX APD (IN)	PIPING R/O SIZE (IN)	
V-1	TEMPMASTER	HSW	2715	1100	M	24	49,769	10x36	1	5.00	2.1	180	160	55	100	0.36	1
V-2	TEMPMASTER	HSW	175	80	A	5	5,000	10x9	1	0.50	0.1	180	160	55	118	0.03	1/2
V-3	TEMPMASTER	HSW	275	110	A	5	6,080	10x9	1	0.75	0.2	180	164	55	110	0.06	1/2
V-4	TEMPMASTER	HSW	200	80	A	5	5,000	10x9	1	0.50	0.1	180	160	55	118	0.03	1/2
V-5	TEMPMASTER	HSW	2650	1100	M	24	49,769	10x36	1	5.00	2.4	180	160	55	100	0.34	1
V-6	TEMPMASTER	HSW	235	95	A	5	5,663	10x9	1	0.75	0.2	180	165	55	115	0.04	1/2

[illegible]



**SCHEDULES:**  
 CP-1 SHALL EQUAL TACO MODEL KVI506, 3 GPM, 30" HEAD, 1 HP, 208V/3PH/60HZ, 9.4 FLA, 12 MCA, 20 AMP MOCP.  
 HP-1 SHALL EQUAL TACO MODEL 1619, 25 GPM, 45" HEAD, 1 1/2 HP, 208V/3PH/60HZ, 9.4 FLA, 12 MCA, 20 AMP MOCP. PROVIDE VARIABLE FREQUENCY DRIVE.

① NOTES:  
PROVIDE CHASE OF METAL STUDS, AND 5/8" GYPSUM BOARD FROM FLOOR TO STRUCTURE ABOVE. TAPE, TEXTURE, AND PAINT TO MATCH ADJACENT. PROVIDE FLOOR BASE TO MATCH EXISTING. PROVIDE CEILING T-BAR, AND CEILING MODIFICATIONS AS REQUIRED.

(A) B7 BASEMENT HVAC PIPING FLOOR PLAN

SCALE: 1" = 8'-0"



B7 FIRST FLOOR HVAC PIPING PLAN

SCALE: 1" = 8'-0"



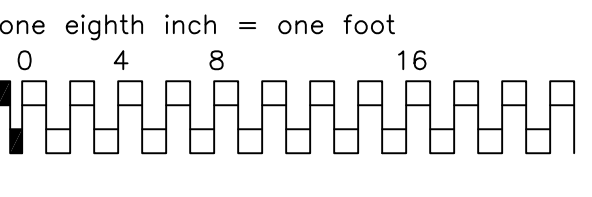
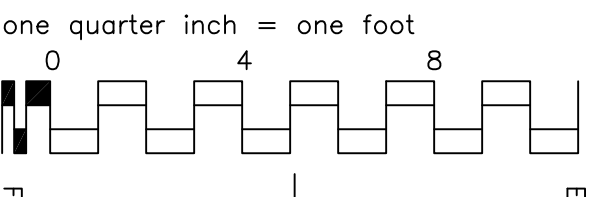
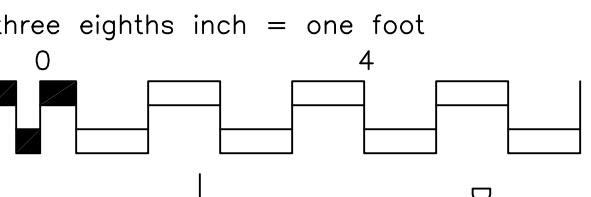
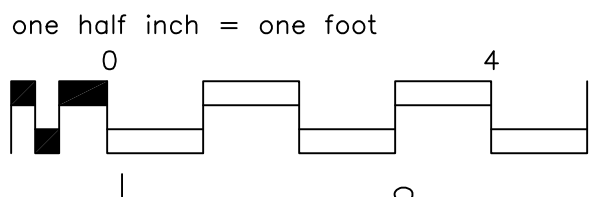
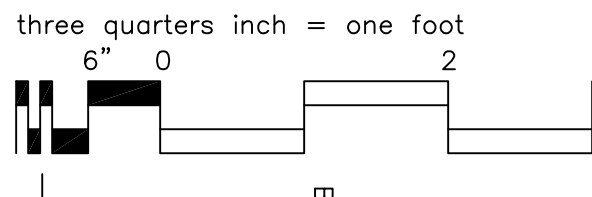
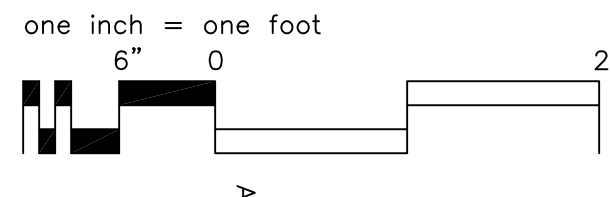
C B7 ATTIC HVAC PIPING FLOOR PLAN

SCALE: 1" = 8'-0"

[illegible]



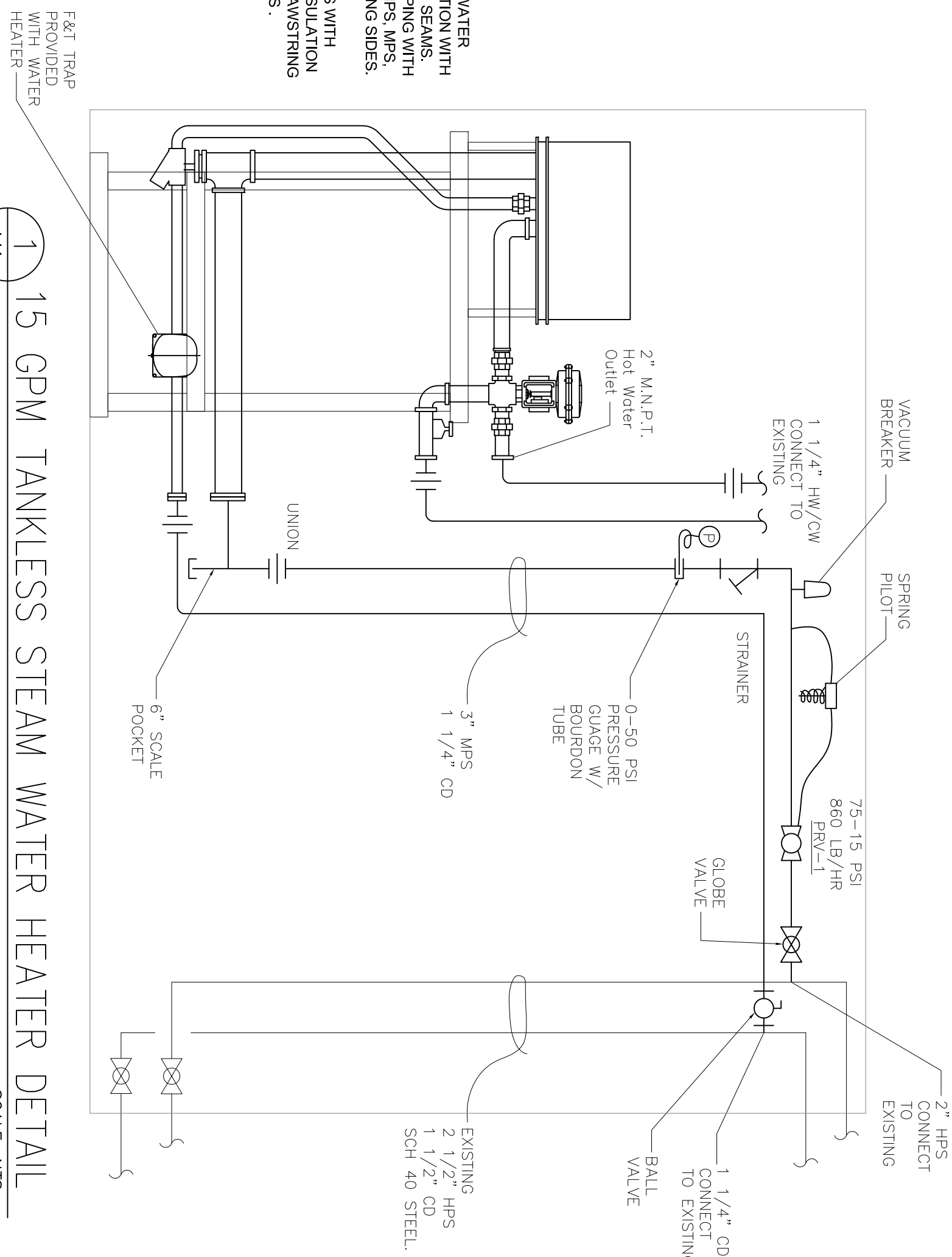
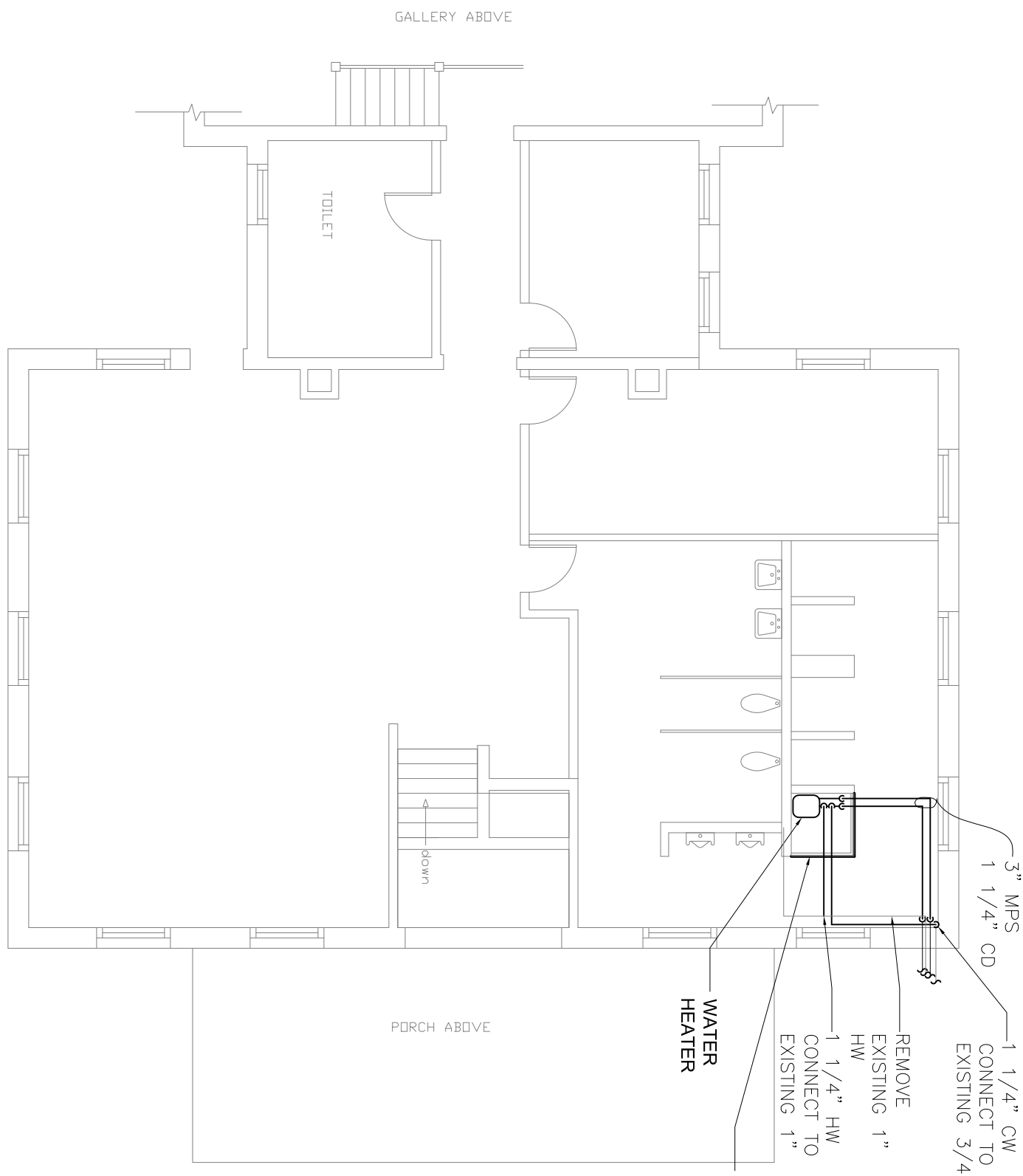


[illegible]

CONSULTANTS:	

ARCHITECT/ENGINEERS:	
----------------------	--

Drawing Title  BUILDING 24 WATER HEATER	Project Title			Project Number 666-13-803	Office of Facilities Management
	MECHANICAL				
	WORK B7, 24, 3-6				
	Building Number MULTIPLE				
Approved Project Director  DANIEL PAGONE	Location			Drawing Number  M6	Department of Veterans Affairs
	SHERIDAN WY				
	Date	Checked	Drawn		
	JAN 29, 2013	WELTY	LAS		
			Dwg 7 of 7		



WATER HEATER EQUAL TO LESLIE MODEL, E1500L, 15 PSI STEAM IN, 860 LB /HR, 34 DEGREE WATER IN, 140 DEGREE WATER OUT, 15 GPM.  
PRESSURE REDUCING VALVE APPROVED AND 15 PSI IN, 15 PSI OUT.  
MODEL 2100, 1" NPT, REDUCED PORT, 860 LB/HR, 15 PSI IN, 15 PSI OUT.  
PROVIDE PRESSURE CONTROL SPRING PILOT, PROVIDE ECCENTRIC  
REDUCERS FOR 3" TO 1" AND 3" TO 1" PIPING.  
3/4" VACUUM BREAKER EQUAL TO HOFFMAN SPECIALTY MODEL, 62  
MATERIAL SCHEDULES: