

FIRE PROTECTION DEMOLITION PLAN

SCALE: 1/4" = 1'-0"

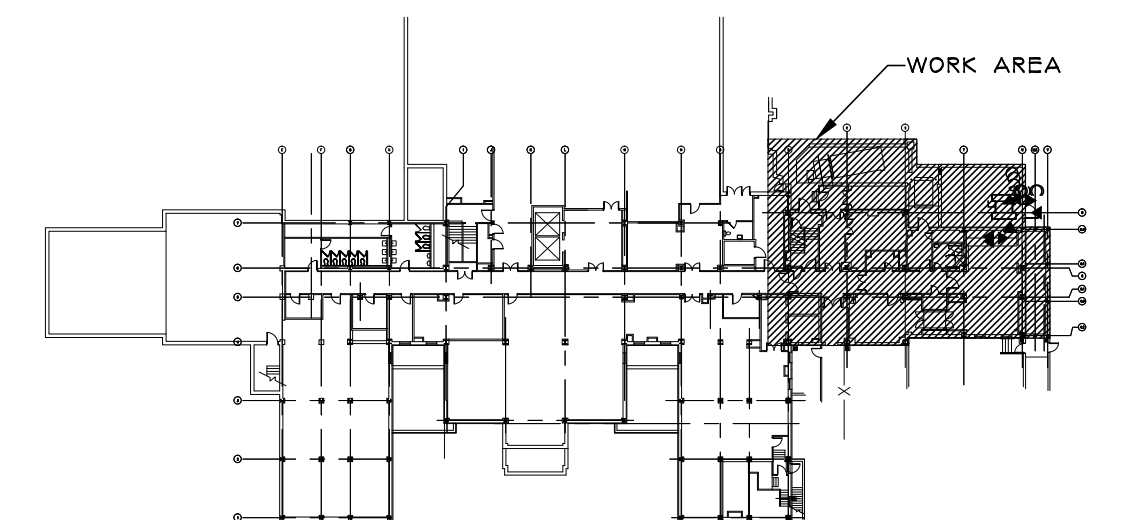


- FIRE PROTECTION SCOPE NOTES.**
1. REMOVE EXISTING SPRINKLER HEADS AND BRANCH PIPING TO EXTENT NECESSARY TO ACCOMMODATE NEW CEILING ARRANGEMENT.
  2. ANY SPRINKLER ZONES BEING MODIFIED MUST BE LEFT IN AN ACTIVE AND OPERATIONAL CONDITION AT THE END OF EACH WORK DAY.
  3. REFER TO ARCHITECTURAL PLANS FOR CEILING GRID COORDINATION.

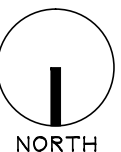
- GENERAL FIRE PROTECTION NOTES: APPLIES TO ALL FIRE PROTECTION DRAWINGS!**
1. DRAWINGS ARE DIAGRAMMATIC AND INDICATE GENERAL ARRANGEMENT OF SYSTEMS AND WORK INCLUDED IN THE CONTRACT. IT IS NOT INTENDED TO SPECIFY OR SHOW EVERY OFFSET, FITTING OR COMPONENT. HOWEVER, CONTRACT DOCUMENTS REQUIRE COMPONENTS AND MATERIALS WHETHER OR NOT INDICATED OR SPECIFICALLY SPECIFIED TO MAKE THE SYSTEMS BEING INSTALLED COMPLETE, CODE COMPLIANT, TESTED AND OPERATIONAL.
  2. EXISTING FIRE PROTECTION PIPING LOCATION AND ARRANGEMENT IS APPROXIMATE ONLY. CONTRACTOR SHALL FIELD VERIFY ALL LOCATIONS, DIMENSIONS, SIZES AND ELEVATIONS PRIOR TO CONSTRUCTION.
  3. CONTRACTOR SHALL ENLIST THE SERVICES OF A QUALIFIED SPRINKLER DESIGN AND INSTALLATION FIRM WITH A MINIMUM OF 10 YEARS EXPERIENCE IN THE FIELD AND A HISTORY OF SUCCESSFUL PROJECTS IN HEALTHCARE FACILITIES. CONTRACTOR SHALL PROVIDE SPRINKLER DRAWINGS DEVELOPED BY A NICET LEVEL-III DESIGNER PRIOR TO CONSTRUCTION. DESIGN SHALL PROVIDE FOR COMPLETE COVERAGE OF THE AREAS INDICATED IN ACCORDANCE WITH NFPA-13. INSTALLATION OF SPRINKLER SYSTEMS AND ALL LOCAL, STATE AND FEDERAL REQUIREMENTS. REFER TO NFPA 241 CONSTRUCTION, ALTERATION, AND DEMOLITION OPERATIONS TO MAINTAIN EXISTING SPRINKLER SYSTEMS. CONTRACTOR SHALL MAINTAIN EXISTING SPRINKLER SYSTEMS AS LONG AS FEASIBLE AND NEW SPRINKLER IS INSTALLED AS SOON AS POSSIBLE TO REDUCE THE AMOUNT OF TIME WITHOUT FIRE PROTECTION.
  4. ALL MATERIALS, EQUIPMENT, METHODS OF INSTALLATION, REMOVALS AND DISPOSAL SHALL BE IN ACCORDANCE WITH THE STANDARDS, REGULATIONS, CODES, ORDINANCES, AND LAWS OF LOCAL, STATE, AND FEDERAL GOVERNMENTS, AND OTHER AUTHORITIES THAT HAVE LAWFUL JURISDICTION.
  5. PERFORM WORK, PROVIDE MATERIALS AND EQUIPMENT FOR SYSTEMS SHOWN, SPECIFIED AND DESCRIBED ON DRAWINGS. COMPLETELY COORDINATE WITH ALL TRADES OF THIS CONTRACT AND PROVIDE COMPLETE AND FULLY FUNCTIONAL INSTALLATION.
  6. PROTECT ALL EXISTING AND NEW BUILDING ELEMENTS FROM DAMAGE. CONTRACTOR SHALL RESTORE ALL DAMAGED ELEMENTS TO ORIGINAL OR BETTER CONDITION.
  7. WORK SHALL BE EXECUTED IN A WORKMANLIKE MANNER AND SHALL PRESENT NEAT, RECTILINEAR APPEARANCE WHEN COMPLETED. MAINTAIN MAXIMUM HEAD ROOM AT ALL TIMES. DO NOT RUN PIPES, EXPOSED UNLESS SHOWN AND NOTED TO BE EXPOSED ON DRAWINGS.
  8. MATERIALS AND EQUIPMENT SHALL BE NEW AND INSTALLED ACCORDING TO MANUFACTURER'S INSTRUCTIONS AND RECOMMENDATIONS. MAINTAIN MANUFACTURER'S EQUIPMENT CLEARANCES, UNLESS NOTED OTHERWISE.
  9. CONTRACTOR IS RESPONSIBLE FOR ALL WORK RELATED TO ISOLATING, SHUTTING DOWN, DRAINING, FILING AND TESTING SYSTEMS TO ALLOW FOR COMPLETION OF WORK. INTERRUPTIONS TO EXISTING SERVICES AND SYSTEMS SHALL BE AS SHORT AS POSSIBLE AND AT A TIME AND DURATION APPROVED BY THE COR AS APPLICABLE. INCLUDE ALL PREMIUM TIME ASSOCIATED WITH INTERRUPTIONS. ALL SYSTEM INTERRUPTIONS SHALL BE SCHEDULED WITH COR AND COORDINATED WITH OTHER TRADE WORK.
  10. ALL EQUIPMENT PIPING, WIRING, INSULATION ETC. INSTALLED IN HVAC AIR PLENUM SPACES SHALL MEET CODE REQUIREMENTS FOR SMOKE AND COMBUSTIBILITY.
  11. SEAL ALL PENETRATIONS THROUGH FIRE RATED WALLS, PARTITIONS AND FLOORS WITH UL RATED MATERIALS/METHODS EQUIVALENT TO FIRE RATING OF ASSEMBLY.
  12. PROVIDE PROPER ACCESS TO EQUIPMENT THAT REQUIRES INSPECTION, REPLACEMENT OR REPAIR. ACCESS PANELS/DOORS SHALL BE A MINIMUM OF 12"x12" UNLESS OTHERWISE NOTED.
  13. EXISTING SPRINKLER HEADS TO REMAIN IN ADJACENT AREAS UNLESS NOTED OTHERWISE.
  14. ALL BRANCH PIPING SHALL BE LOCATED HIGH ENOUGH ABOVE CEILING TO ALLOW ALL OTHER DEVICES IN CEILING TO FIT WITHOUT OBSTRUCTION.
  15. DO NOT HANG SPRINKLER OR OTHER FIRE PROTECTION SYSTEM DEVICES, CONDUITS, PIPING, ETC. FROM ANY SUSPENDED CEILING OR SUSPENDED SYSTEM OR SUPPORTS. ALL FIRE PROTECTION RELATED ITEMS SHALL BE SECURED TO THE BUILDING FLOORS/CEILINGS OR EQUIVALENT MEMBER.
  16. ANY SPRINKLER ZONES BEING MODIFIED MUST BE LEFT IN AN ACTIVE AND OPERATIONAL CONDITION AT THE END OF EACH WORK DAY.
  17. THESE GENERAL NOTES APPLY TO ALL DRAWINGS ASSOCIATED WITH THIS TRADE.

- LEGEND:**
- NEW SEMI-RECESSED PENDENT SPRINKLER HEAD (TO BE PROVIDED ON RECONFIGURED BRANCH PIPING)
  - NEW SEMI-RECESSED PENDENT SPRINKLER HEAD (TO BE PROVIDED ON NEW BRANCH PIPING)
  - NEW SIDE-WALL SPRINKLER HEAD (TO BE PROVIDED ON NEW BRANCH PIPING)
  - EXISTING ZONE VALVE ASSEMBLY W/ DRAIN RISER (TO REMAIN)
  - FIRE PROTECTION PIPING MAIN (SPRINKLER) - TO REMAIN
  - FIRE PROTECTION PIPING DEMOLITION
  - PIPE BRANCH UP
  - PIPE ELBOW DN
  - PIPE RISER
  - PIPE BRANCH DN
  - LIMIT OF REMOVAL
  - CONNECT TO EXISTING

- KEYED NOTES:**
1. EXISTING SPRINKLER HEAD TO BE REMOVED REMOVE ASSOCIATED BRANCH PIPING BACK TO MAIN AND CAP. PREPARE REMAINING SPRINKLER PIPING FOR CONNECTION TO NEW.
  2. REMOVE EXISTING SPRINKLER HEAD AND PREPARE REMAINING BRANCH PIPING FOR CONNECTION TO NEW.



KEY PLAN  
NTS



Revisions	Date

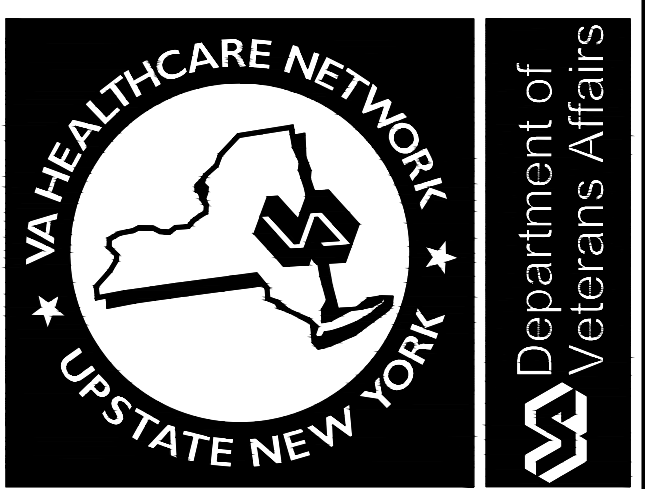
**IPD: Engineering**  
INTEGRATED PROJECT DELIVERY  
ONE WEBSTER'S LANDING  
SYRACUSE, NEW YORK 13202  
315.425.0185  
IPD PROJECT No: 12-7304-8

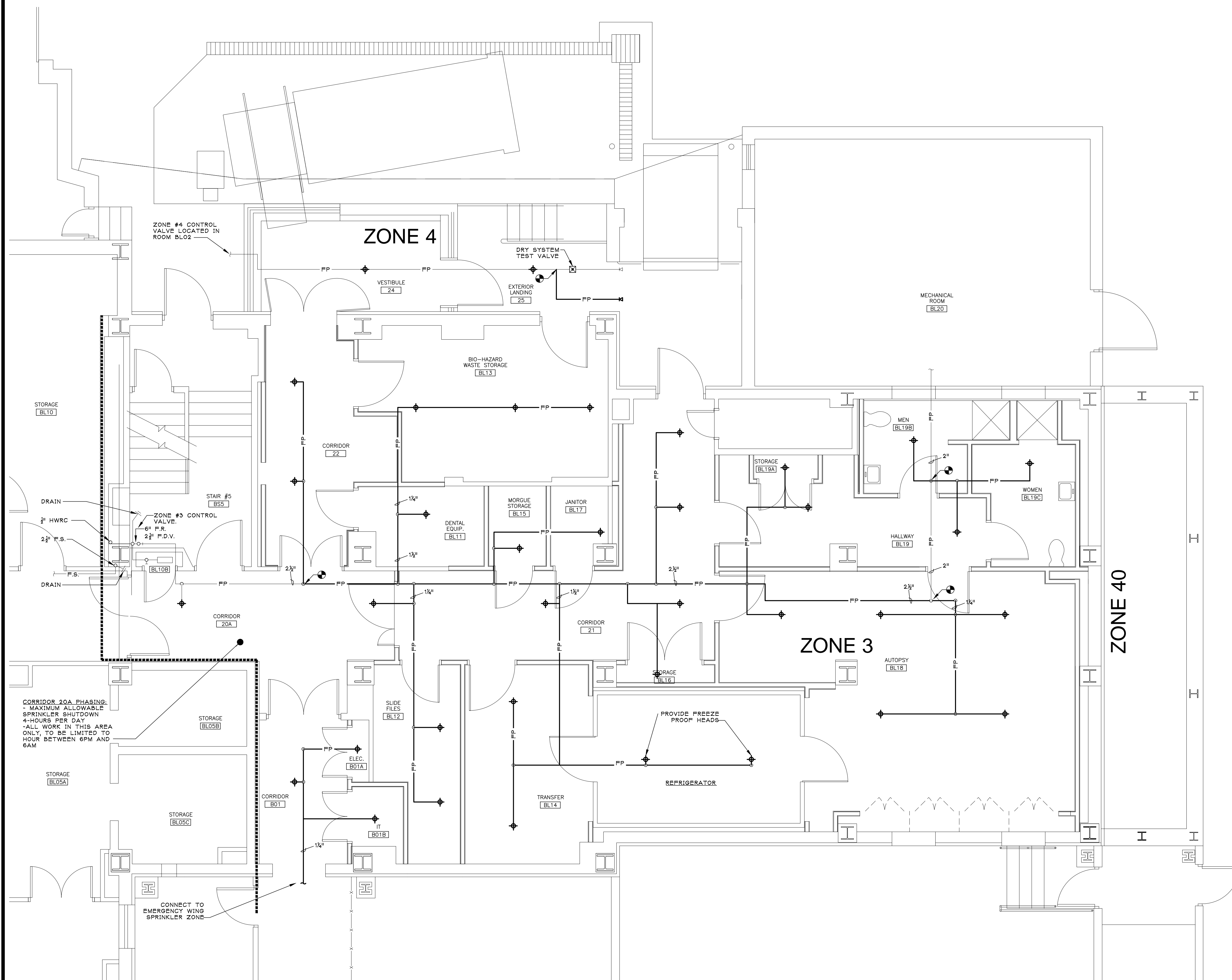
**Schopfer Architects LLP**  
1111 JAMES ST.  
SYRACUSE, NY 13203  
315-474-6501  
FAX 315-474-1922

Drawing Title  
**FIRE PROTECTION DEMOLITION PLAN**  
SA # 1134

Project Title  
**MORGUE RENOVATIONS**  
Building Number  
1  
Location  
SYRACUSE, NY

Date  
04/03/13  
Project No.  
528A7-12-710  
DRAWING NO.  
**FD101**  
Dwg. 11 Of 35

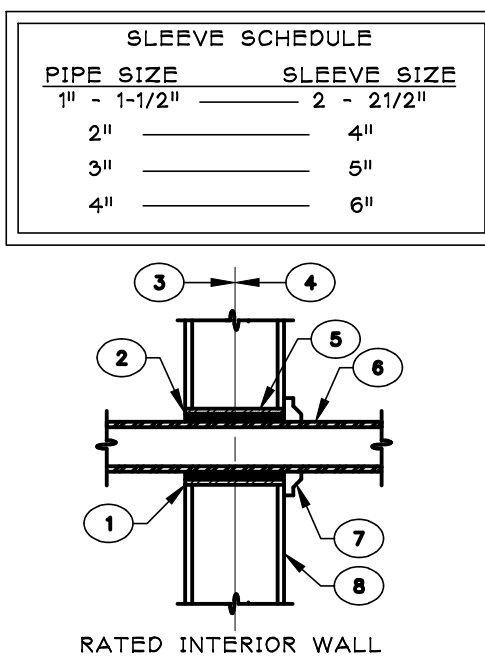




**FIRE PROTECTION PLAN**  
SCALE: 1/4" = 1'-0"

**FIRE PROTECTION SCOPE NOTES.**

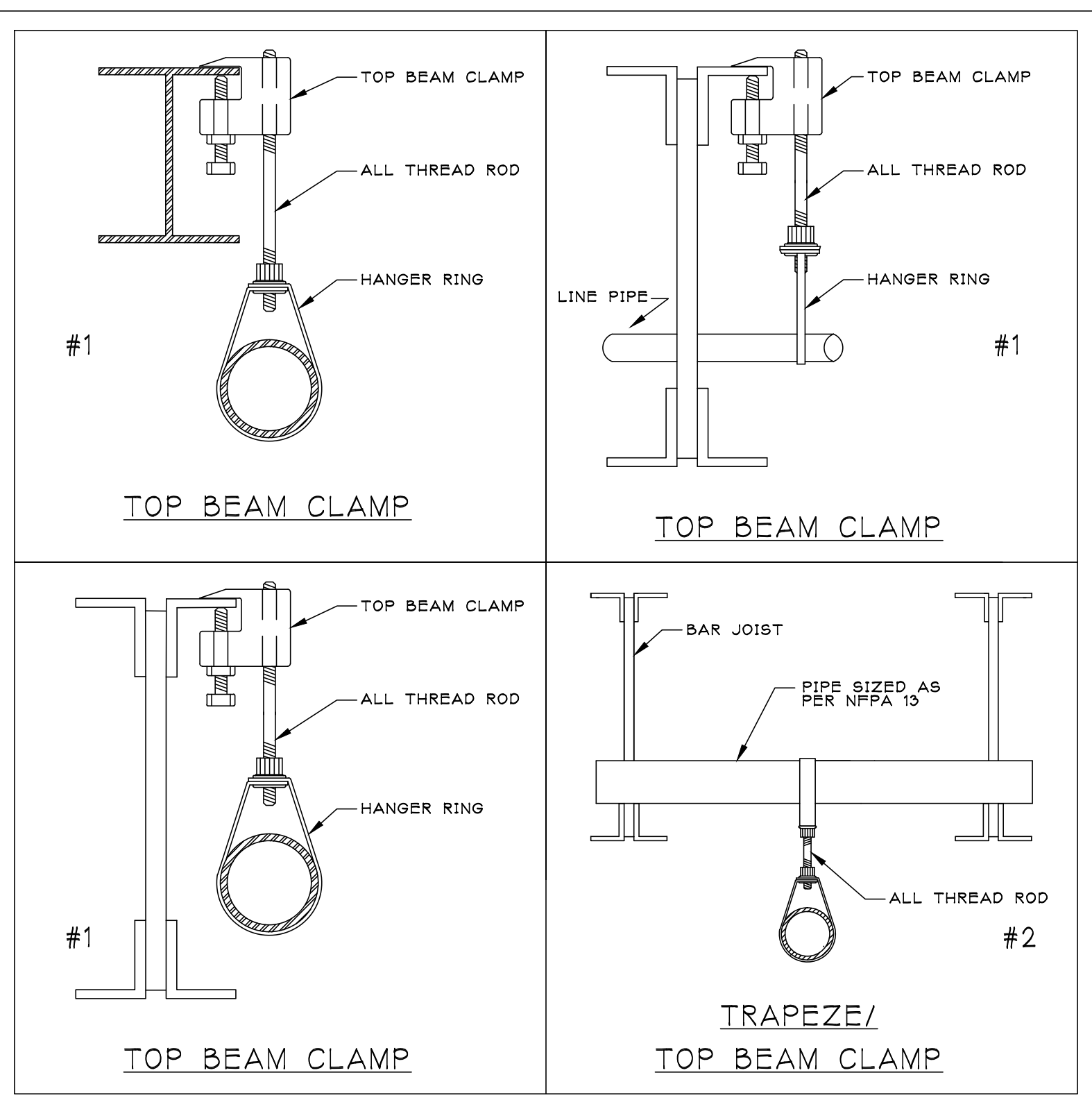
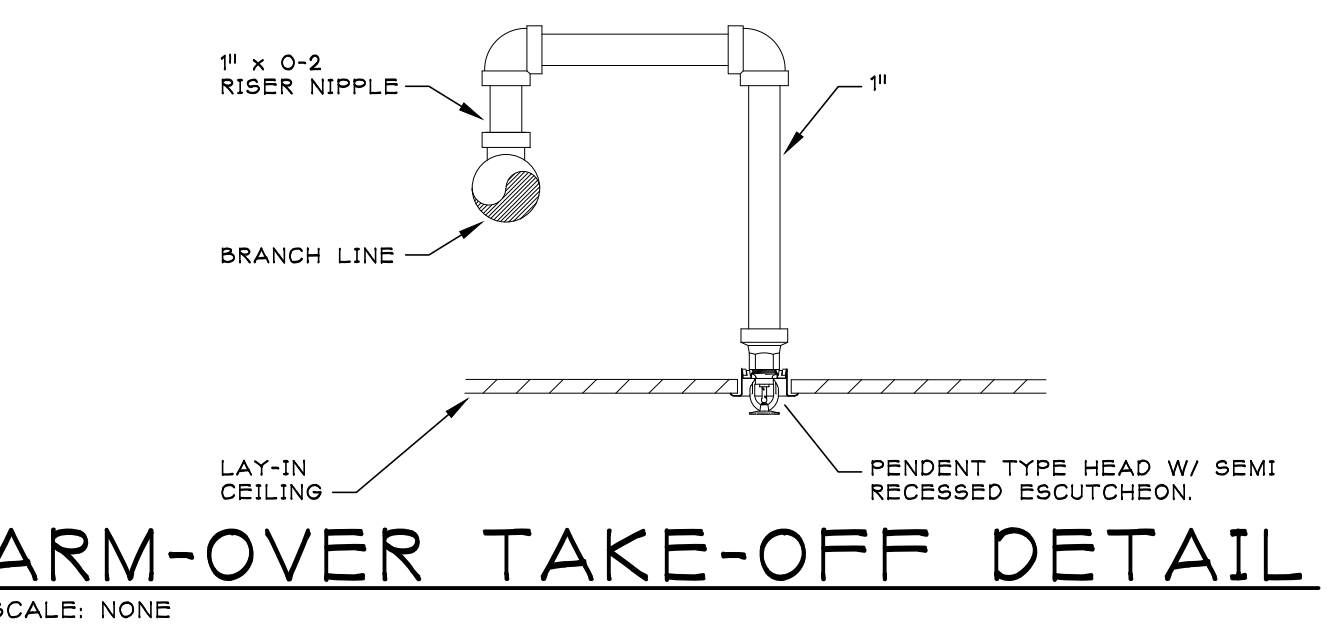
1. BRANCH PIPING SERVING UP TO TWO HEADS IS 1" DIAMETER UNLESS NOTED OTHERWISE.
2. REFER TO ARCHITECTURAL PLANS FOR CEILING GRID COORDINATION.



- KEYED NOTES:**
1. SEAL PENETRATIONS THROUGH FIRE WALLS WITH UL OR FM LISTED FIRESTOPPING ASSEMBLY.
  2. TERMINATE SLEEVE FLUSH WITH FINISHED WALL SURFACE.
  3. CONCEALED PIPING
  4. PIPING EXPOSED TO VIEW
  5. PIPE SLEEVE
  6. CENTER PIPE IN SLEEVE; DO NOT USE SLEEVE TO SUPPORT PIPE.
  7. ESCUTCHEON PLATE TIGHT TO WALL AND SIZED TO COMPLETELY COVER OPENING
  8. FINISHED WALL SURFACE

**GENERAL NOTE:**  
1. SLEEVES NOT REQUIRED WHERE PENETRATIONS ARE CORE-DRILLED THROUGH MASONRY WALLS/FLOORS. VERIFY REQUIREMENTS WITH APPLICABLE UL FIRESTOP DETAIL.

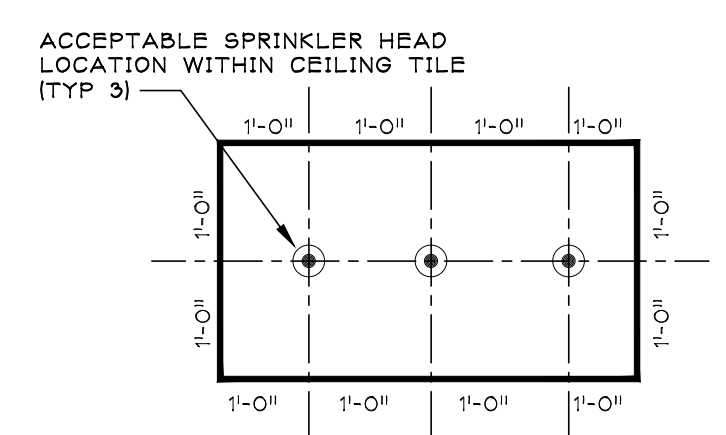
**INTERIOR WALL SLEEVE DETAIL**  
SCALE: 3/4" = 1'-0"



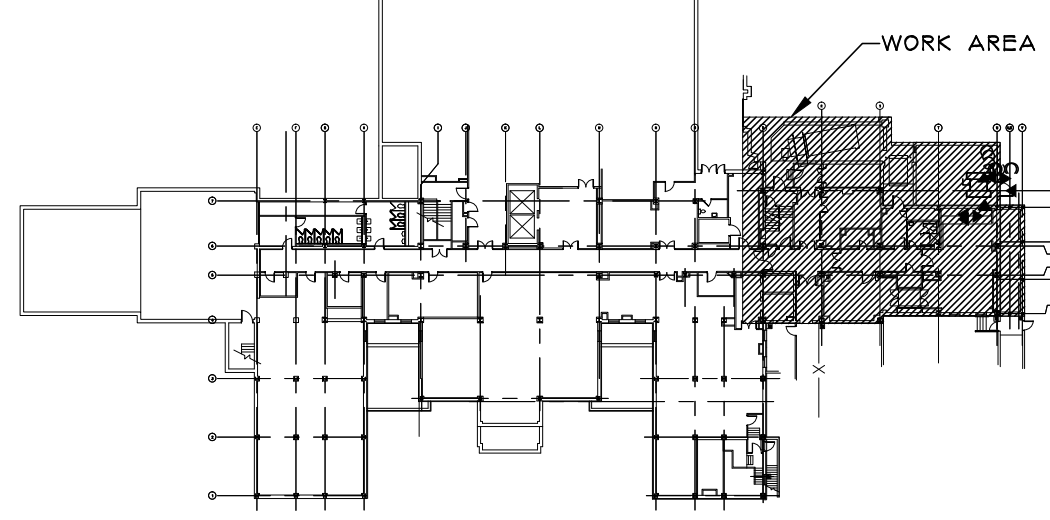
MAXIMUM DISTANCE BETWEEN HANGERS			
STEEL PIPE EXCEPT THREADED LIGHTWALL		THREADED LIGHTWALL STEEL PIPE	
3/4"	N/A	3/4"	N/A
1"	12'-0"	1"	12'-0"
1-1/4"	12'-0"	1-1/4"	12'-0"
1-1/2"	15'-0"	1-1/2"	12'-0"
2"	15'-0"	2"	12'-0"
2-1/2"	15'-0"	2-1/2"	12'-0"
3"	15'-0"	3"	12'-0"
3-1/2"	15'-0"	3-1/2"	N/A
4"	15'-0"	4"	N/A

NOTE: ALL HANGERS ARE TYPE #1 UNLESS NOTED OTHERWISE.

**TYPICAL HANGER DETAILS**  
SCALE: NONE



**HEAD LOCATION DETAIL**  
SCALE: NONE



**KEY PLAN**  
NTS

Revisions	Date

**IPD: Engineering**  
INTEGRATED PROJECT DELIVERY

ONE WEBSTER'S LANDING  
SYRACUSE, NEW YORK 13202  
315.425.0185

IPD PROJECT No: 12-7304-8

**Schopfer Architects LLP**

1111 JAMES ST.  
SYRACUSE, NY 13203

315-474-6501  
FAX 315-474-1922

Drawing Title  
**FIRE PROTECTION PLAN**

SA # 1134

Project Title  
**MORGUE RENOVATIONS**

Building Number  
1

Checked  
SBG

Drawn  
NCB

Location  
SYRACUSE, NY

Date  
04/03/13

Project No.  
528A7-12-710

DRAWING NO.  
**FX101**

Dwg. 12 Of 35

**VA HEALTHCARE NETWORK**  
UPSTATE NEW YORK

Department of Veterans Affairs