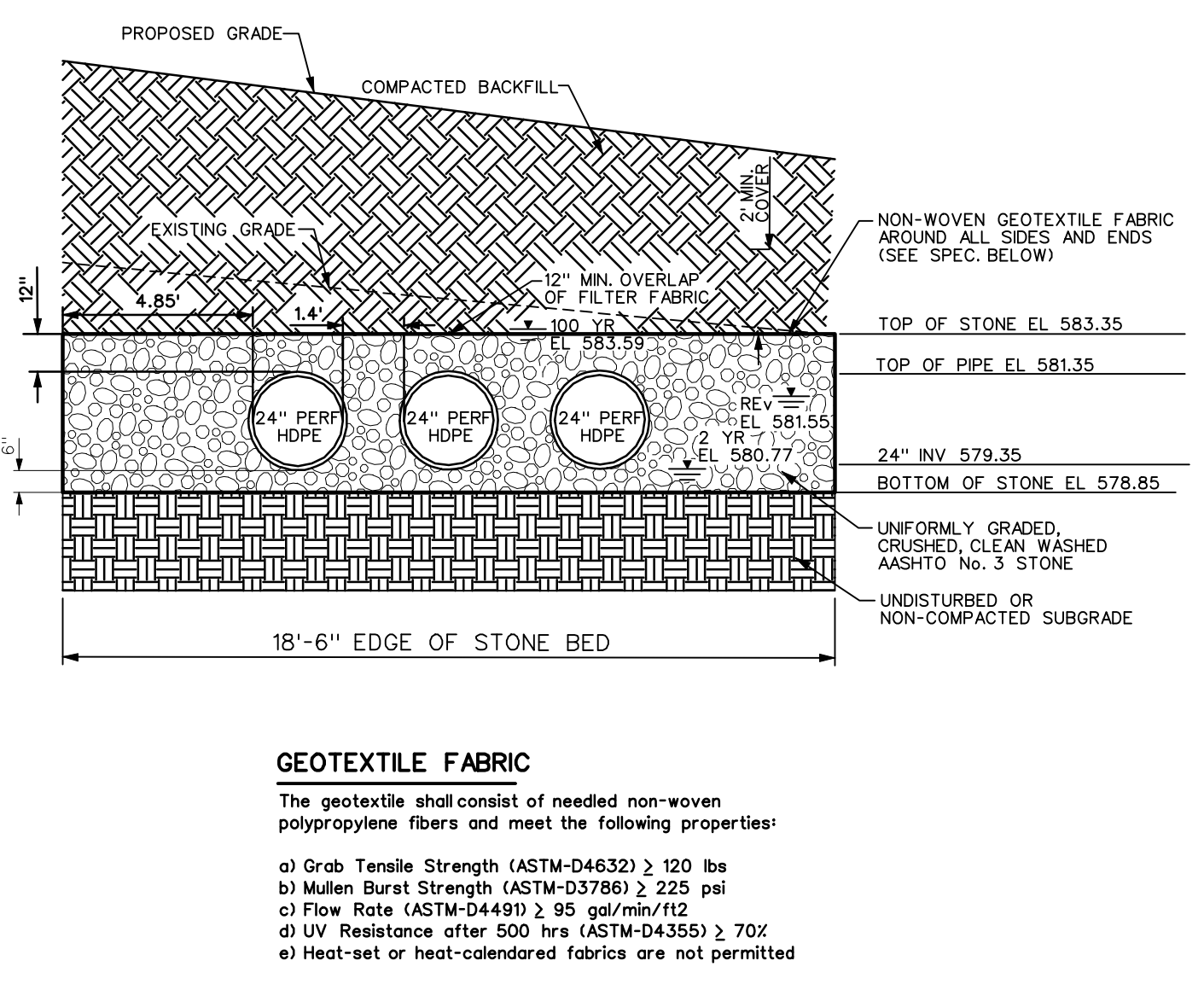
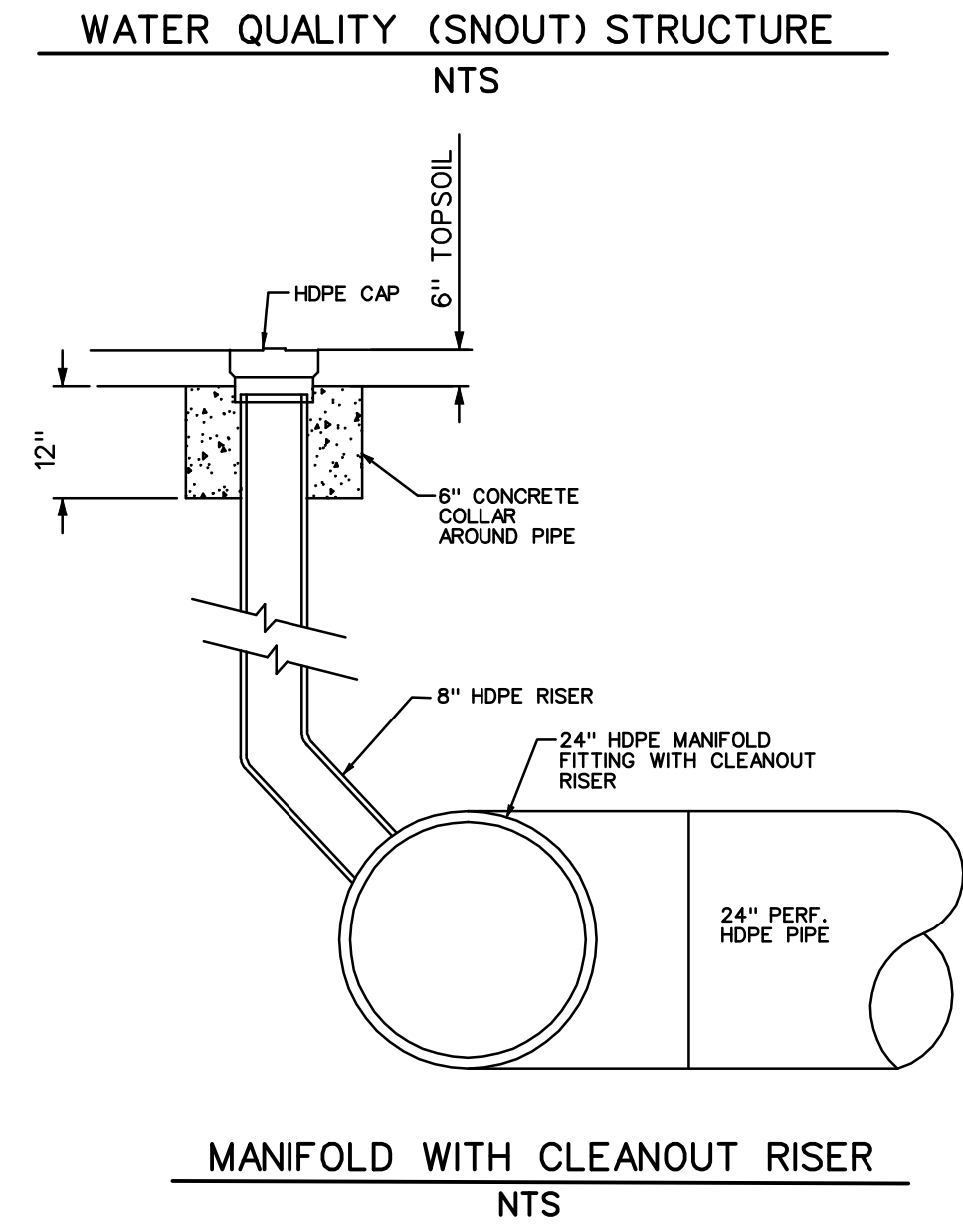
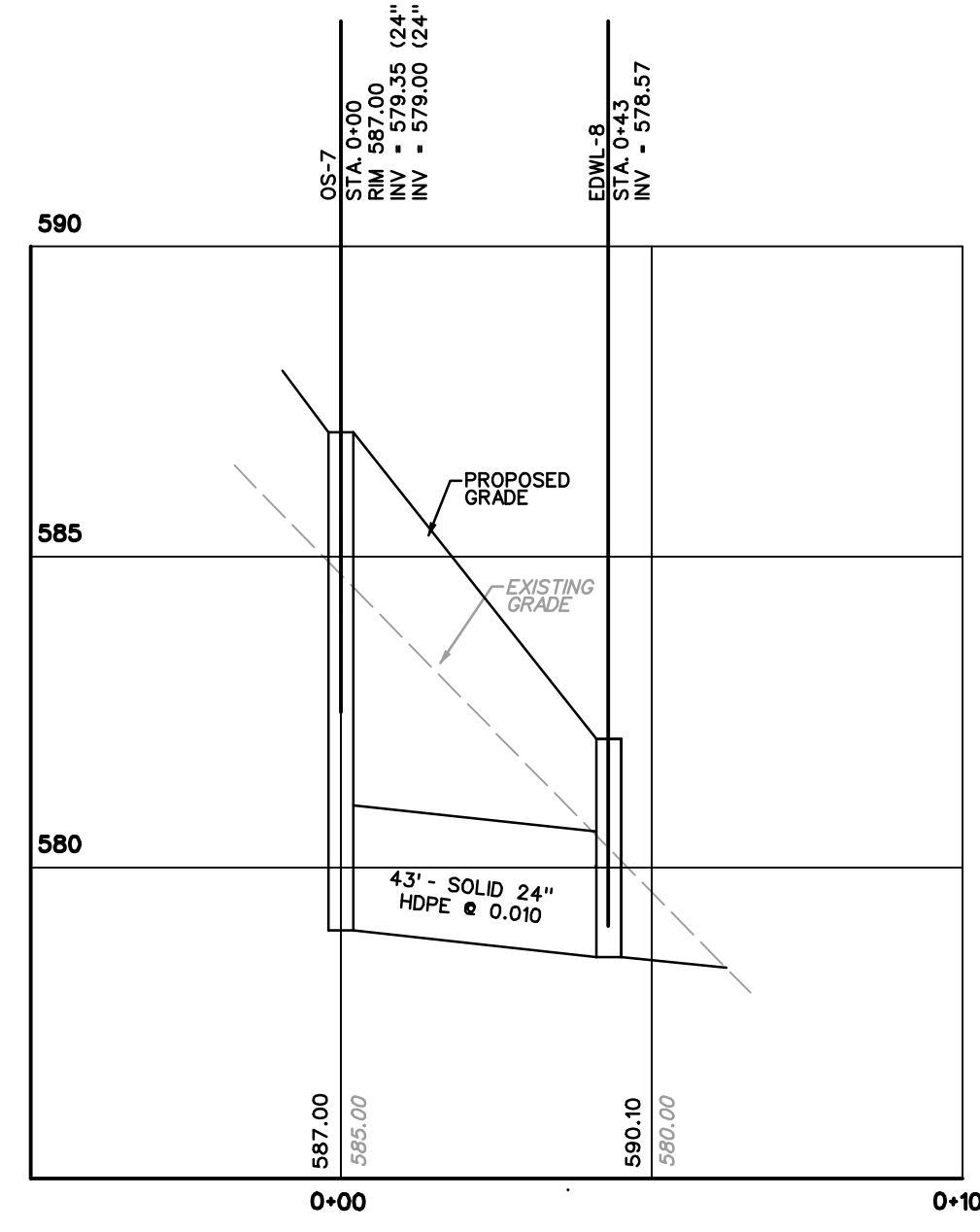
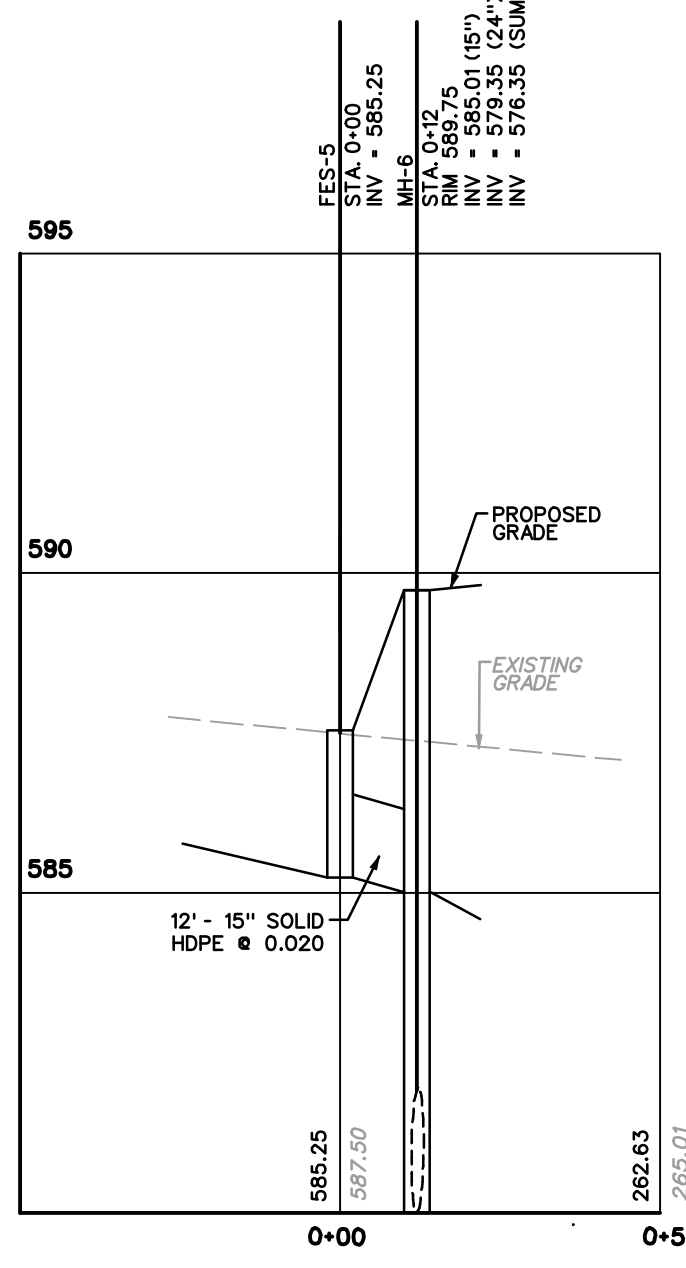
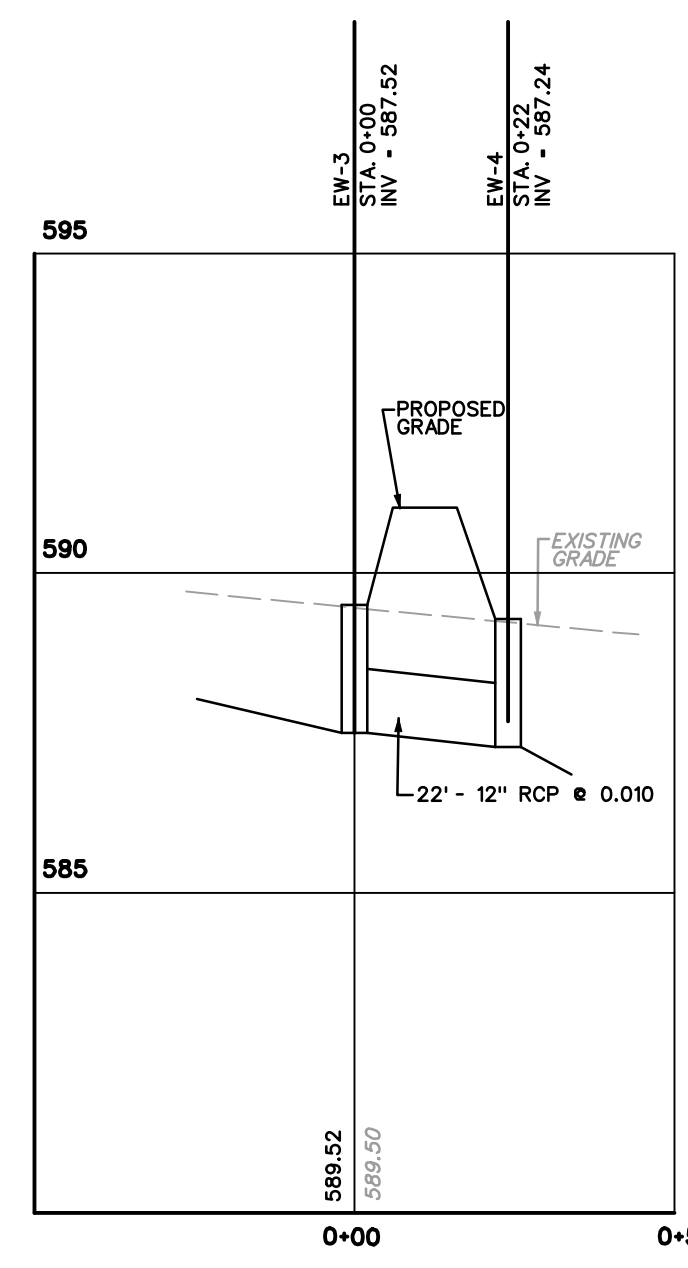
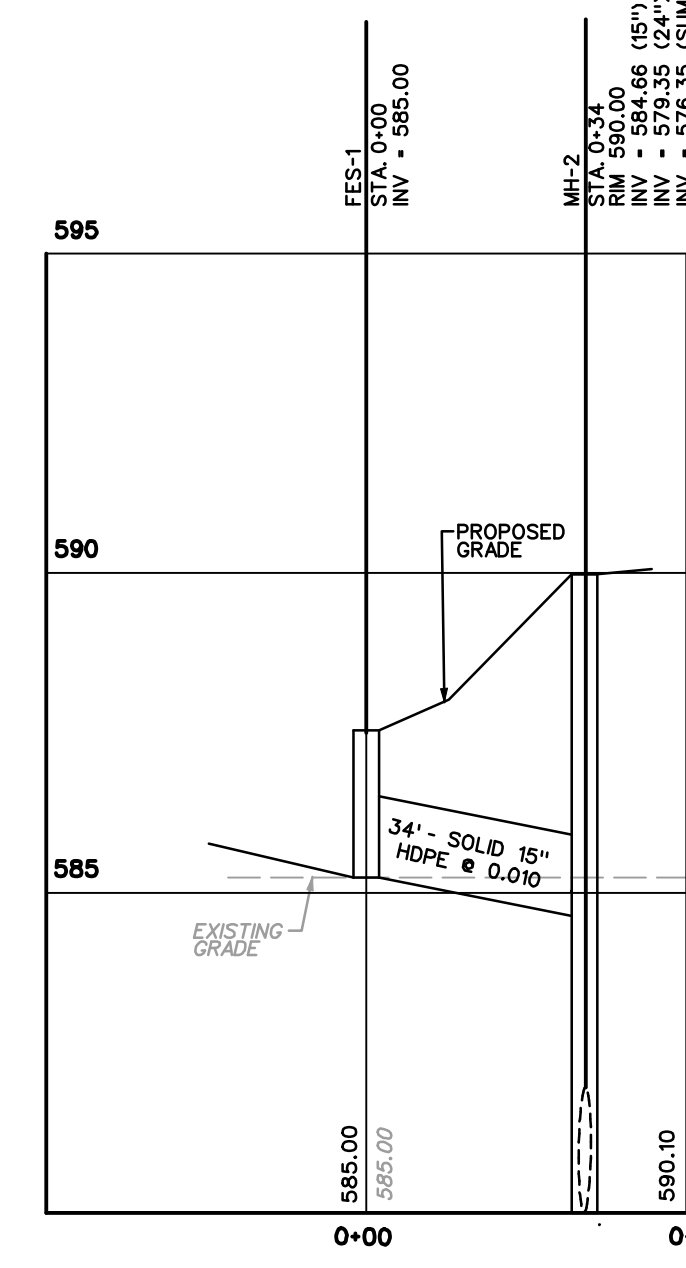
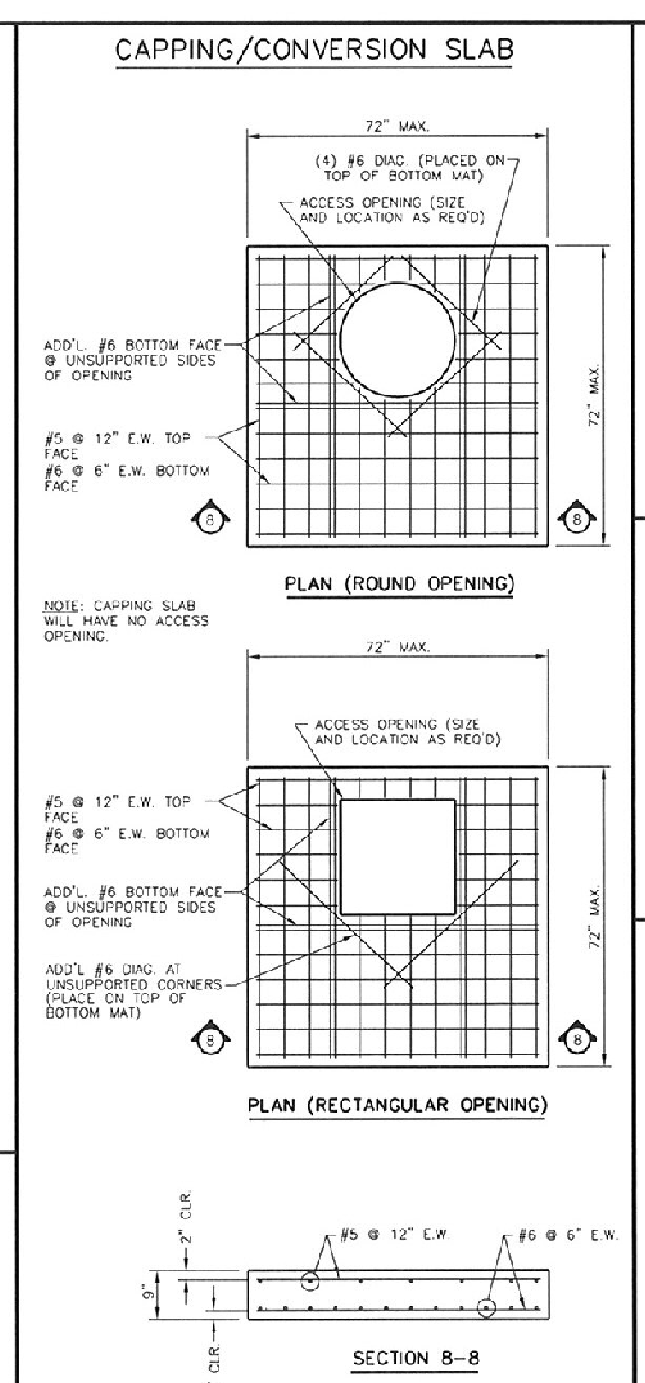
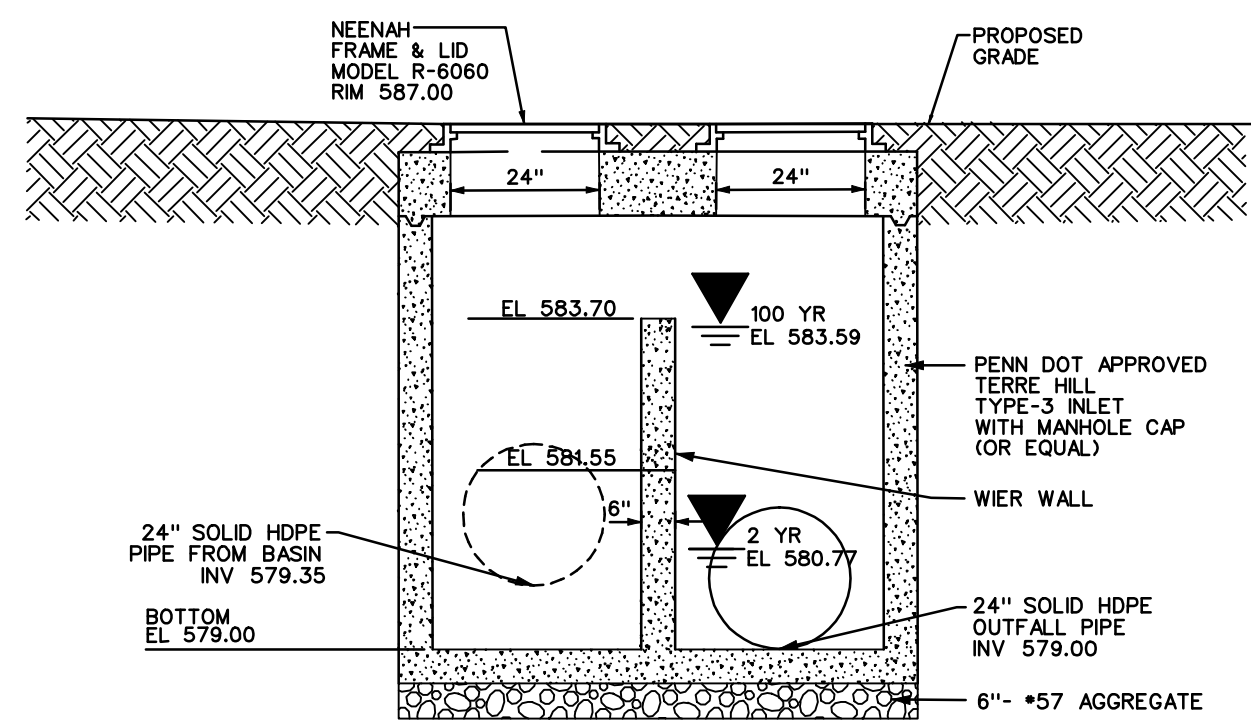
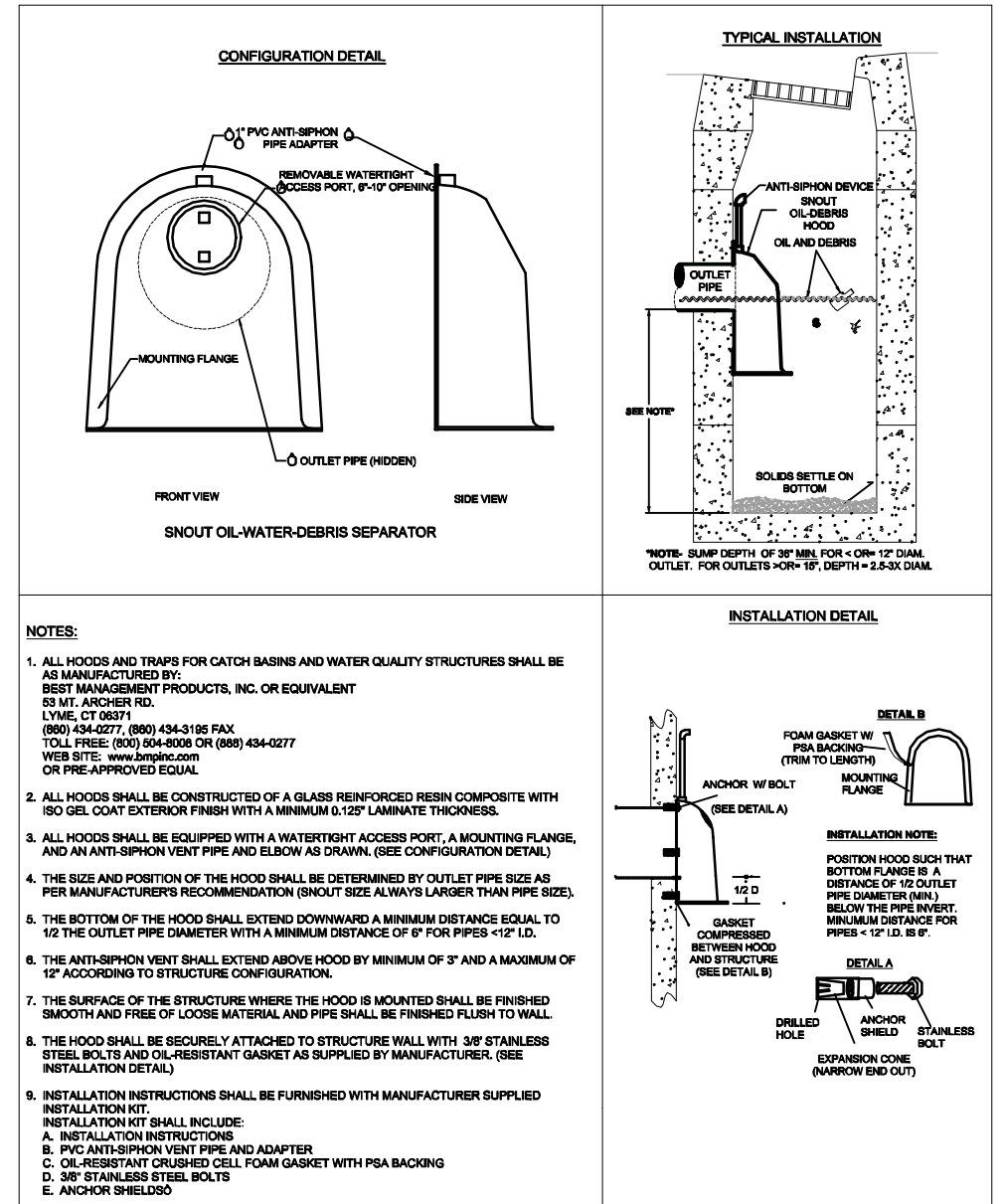
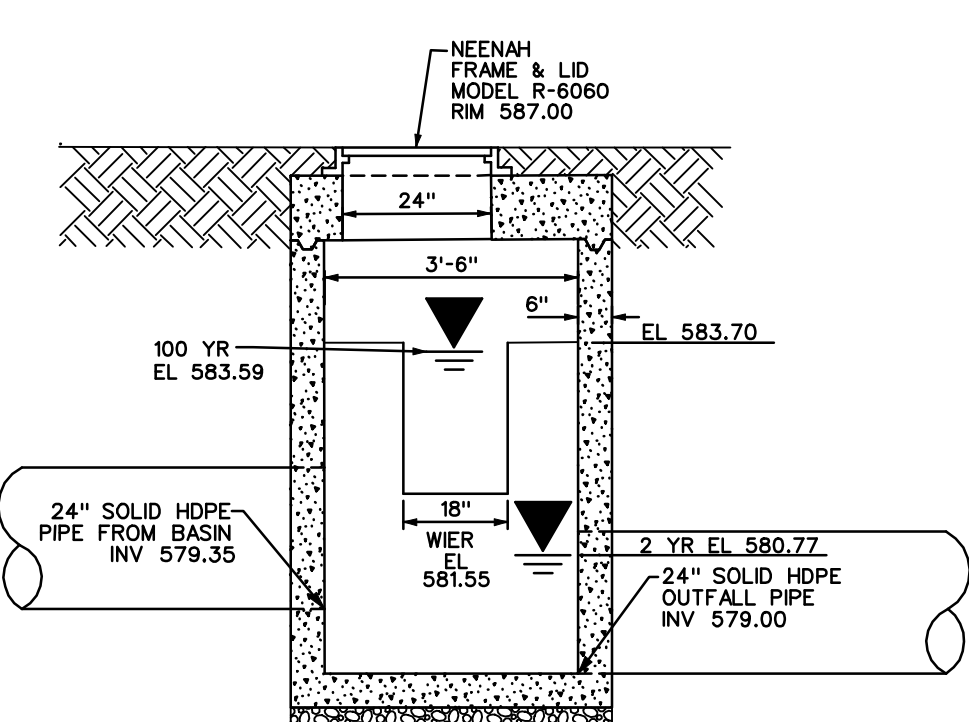
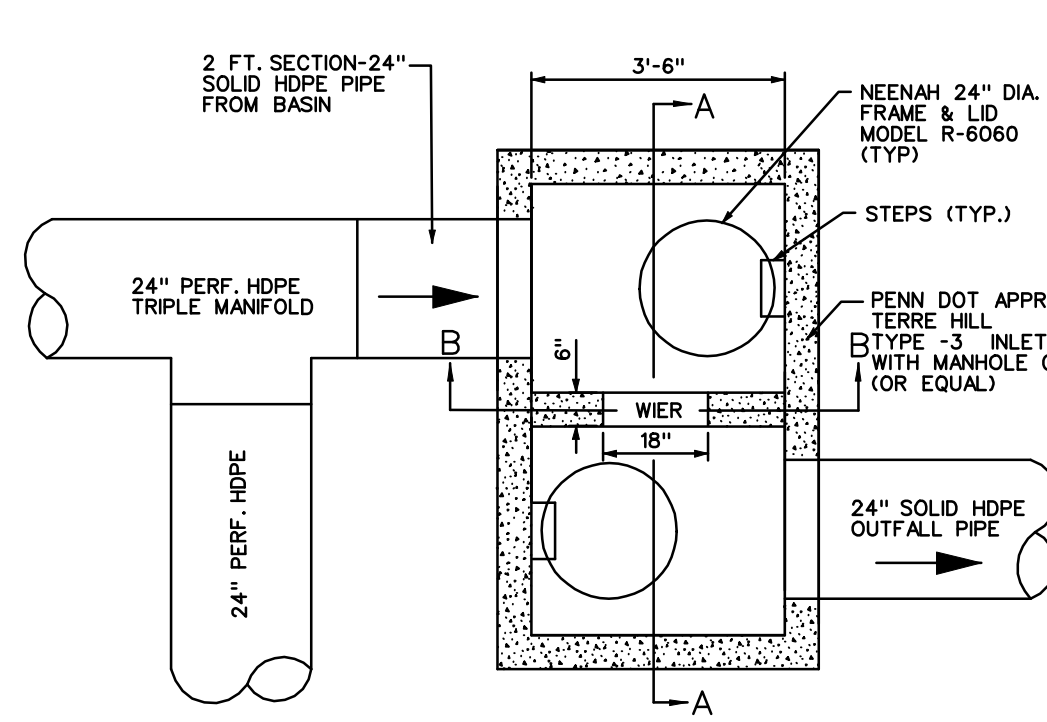
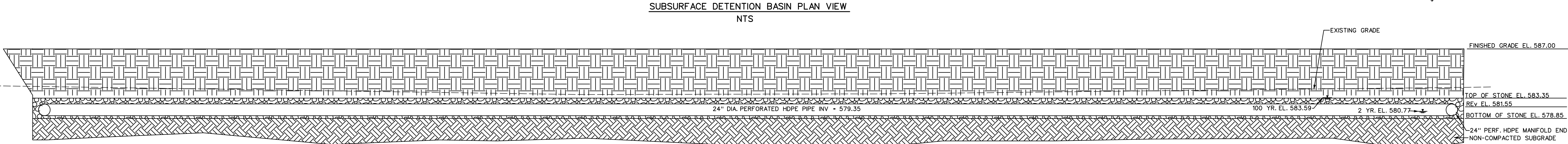
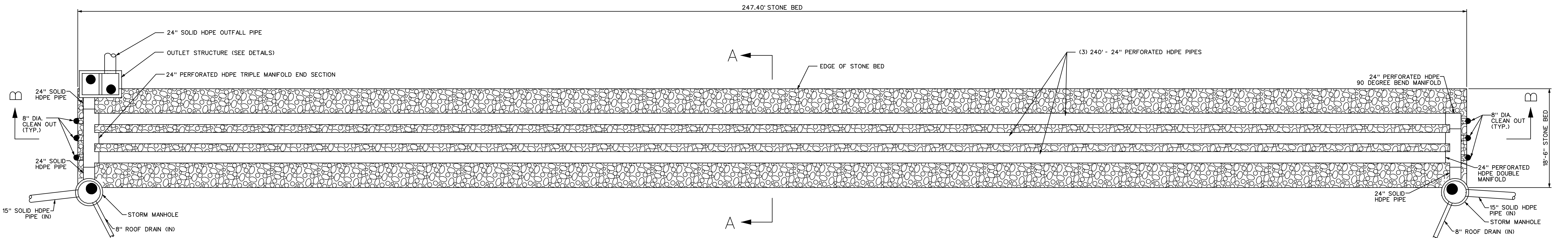


Three eighths inch = one foot
one and one half inches = one foot
one inch = one foot
one quarter inch = one foot
one half inch = one foot
three eighths inch = one foot
one eighth inch = one foot
one quarter inch = one foot
one eighth inch = one foot



GENERAL NOTES:
1. MATERIALS AND CONSTRUCTION SHALL COMPLY WITH SPECIFICATIONS FOR SECTION 714.
2. ALL CONCRETE SHALL BE CAST IN PLACE AND SHALL BE FINISHED TO THE FINISH GRADE.
3. ALL REINFORCING SHALL COMPLY WITH SPECIFICATIONS FOR SECTION 714 AND SHALL BE PLACED IN THE CONCRETE IN ACCORDANCE WITH THE REQUIREMENTS OF THE SPECIFICATIONS.
4. ALL REINFORCING SHALL BE PLACED IN THE CONCRETE IN ACCORDANCE WITH THE REQUIREMENTS OF THE SPECIFICATIONS.
5. ALL REINFORCING SHALL BE PLACED IN THE CONCRETE IN ACCORDANCE WITH THE REQUIREMENTS OF THE SPECIFICATIONS.
6. ALL REINFORCING SHALL BE PLACED IN THE CONCRETE IN ACCORDANCE WITH THE REQUIREMENTS OF THE SPECIFICATIONS.
7. ALL REINFORCING SHALL BE PLACED IN THE CONCRETE IN ACCORDANCE WITH THE REQUIREMENTS OF THE SPECIFICATIONS.
8. ALL REINFORCING SHALL BE PLACED IN THE CONCRETE IN ACCORDANCE WITH THE REQUIREMENTS OF THE SPECIFICATIONS.
9. ALL REINFORCING SHALL BE PLACED IN THE CONCRETE IN ACCORDANCE WITH THE REQUIREMENTS OF THE SPECIFICATIONS.
10. ALL REINFORCING SHALL BE PLACED IN THE CONCRETE IN ACCORDANCE WITH THE REQUIREMENTS OF THE SPECIFICATIONS.

25% Construction Documents 50% Construction Documents Revised per Chester Cty. SCD 1st Review 100% Construction Documents 100% Bid Documents Addendum #4	02/23/10 04/23/10 06/25/10 06/28/10 08/05/10 11/22/10	ASSOCIATES DIRECTOR PATIENT CARE	INFECTION CONTROL	SUPERVISOR M&O	PROJECT MANAGER	ARCHITECT / ENGINEERS : Mechanical, Electrical, Fire Protection, and Planning Engineer H.F. Lenz Company 1407 Scalp Avenue Johnstown, PA 15904-3314 T: 814.269.6300 F: 814.269.9301 Francis Cauffman 2120 Arch Street Philadelphia, PA 19103 Tel: (215) 568-8250 Fax: (215) 568-2639 447 West Moreland Road 3rd Floor Wilkes-Barre, PA 18700 Tel: (717) 340-8707 Fax: (717) 340-8709 www.eustaceeng.com Professional Engineer MARTIN J. EUSTACE, III 048891-E Drawing Title CIVIL POST CONSTRUCTION STORMWATER MANAGEMENT PLAN - BASIN DETAILS Approved: Chief Engineering Service Approved: Medical Center Director Drawn Checked Project Title CONSTRUCT HOSPICE COATESVILLE Building Number Location COATESVILLE, PENNSYLVANIA Date 02-23-2010 Project No. 542-CSI-201 Drawing No. CS-1.08 Dwg. Of
Revisions	Date	TEAMSTER	CONTRACTING OFFICER	GEN UTILITIES	SAFETY OFFICE	
POLICE	PATIENT SAFETY	GEN PROPERTIES	SUPERVISOR PROJECT SECTION			