

RFI-3

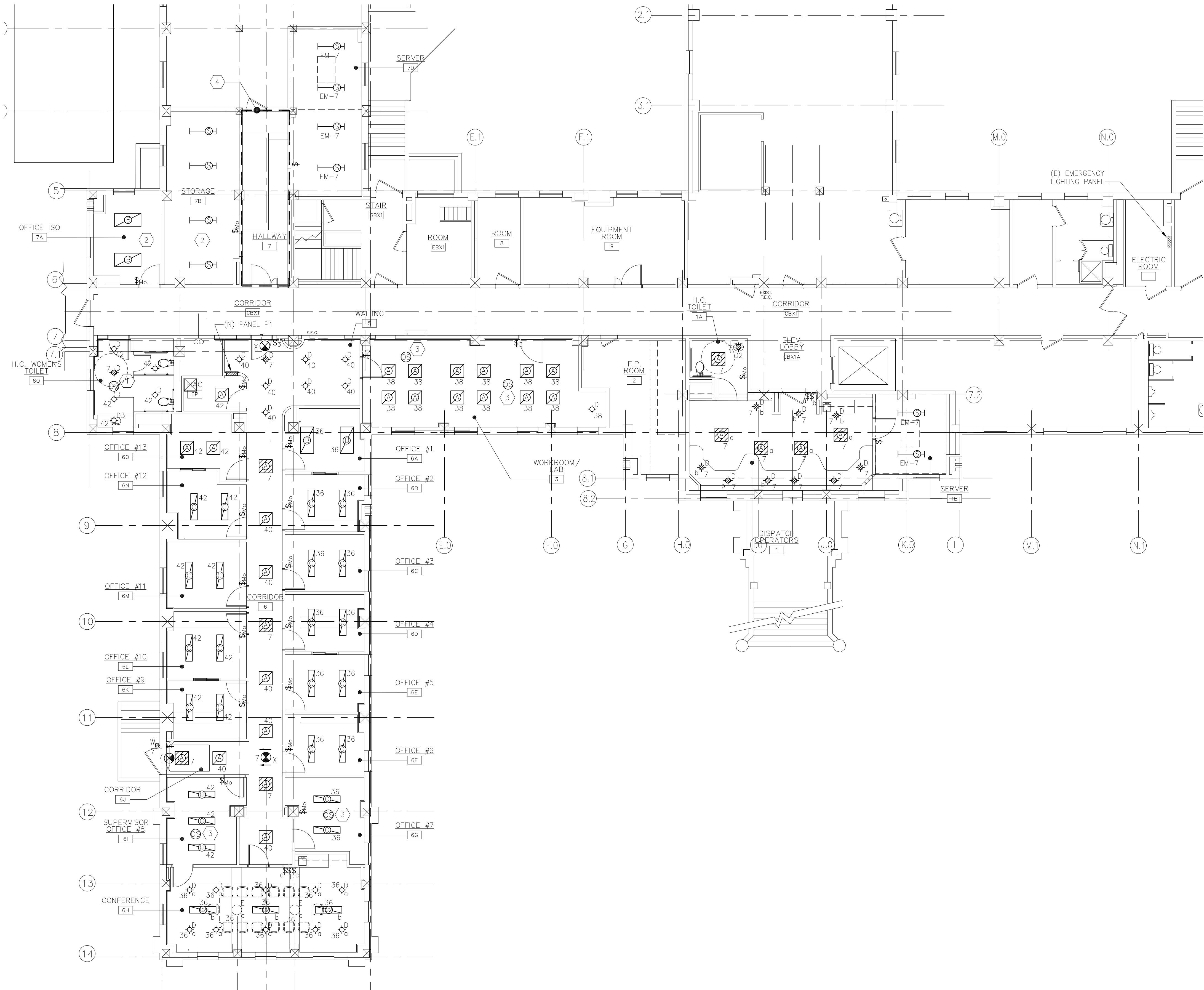
Question:

Fixture types C2, S, D3, D2, W and exits as shown on drawing EL-101 do not appear on the fixture schedule, please clarify.

Answer: Fixture schedule has been updated. See attached.

three inches = one foot
one and one half inches = one foot
one inch = one foot
three quarters inch = one foot
one half inch = one foot
three eighths inch = one foot
one quarter inch = one foot
one eighth inch = one foot
one sixteenth inch = one foot

P:\0499 DVA\1-0499-0024 Canandaigua IS Renovation Building 37\2 Drawings\1_Cad\1_Current Submittal Phase\7_Electrical\EL-101.dwg 4-29-13 10:53:46 AM MRonca



GENERAL SHEET NOTES:

- SEE DRAWING E-001 & E-002 FOR GENERAL NOTES, SYMBOLS AND ABBREVIATIONS.
- ALL LOWERCASE LETTERS ASSOCIATED WITH LIGHT FIXTURES AND WALL SWITCHES INDICATE SWITCHING INTENT.
- ALL NORMAL POWERED LIGHT FIXTURES SHALL BE CIRCUITED TO PANEL P1. ALL LIFE SAFETY LIGHTING FIXTURES SHALL BE CIRCUITED TO EXISTING EMERGENCY LIGHTING PANEL IN MAIN ELECTRICAL ROOM.
- UNSWITCHED LIGHT FIXTURES SHALL REMAIN ON AT ALL TIMES AS SECURITY LIGHTING.

SHEET KEYNOTES:

- LOCATION OF RELAY MODULE ABOVE ACCESSIBLE CEILING. SEE DETAIL 1/E-501 FOR FURTHER INFORMATION ON THE EMERGENCY LIGHTING SWITCHING CONTROL MODULE.
- CONNECT LIGHTING FIXTURES IN THIS ROOM TO CIRCUIT THAT WAS SERVING LIGHTING IN THIS ROOM PRIOR TO RENOVATION.
- PROVIDE LOW-VOLTAGE DUAL-TECHNOLOGY CEILING MOUNTED OCCUPANCY SENSOR FOR CONTROL OF LIGHTING IN THIS ROOM. PROVIDE SWITCH POWER PACKS AS REQUIRED AND SPACE PER MANUFACTURER'S RECOMMENDATIONS. SENSORS SHALL BE WIRED SUCH THAT DETECTION OF AN OCCUPANT SHALL TURN ON ALL LIGHTING FIXTURES IN AREA. SEE DETAIL 2/E-501 FOR FURTHER CONNECTION INFORMATION.
- IN THIS AREA, REMOVE ALL LIGHTING WHEN REQUIRED FOR RENOVATION. CLEAN, RELAMP, AND STORE LIGHT FIXTURES FOR REINSTALLATION. ELECTRICAL CONTRACTOR SHALL PROVIDE TEMPORARY LIGHTING AS REQUIRED DURING CONSTRUCTION. LIGHTING FIXTURES SHALL BE REINSTALLED TO PRE-CONSTRUCTION CONDITION AS THE CONCLUSION OF THE PROJECT WITH AT LEAST ONE FIXTURE BEING TIED INTO THE EMERGENCY LIGHTING PANEL.

LIGHTING FIXTURE SCHEDULE						
TYPE	DIMENSIONS	DESCRIPTION	LAMPS			REMARKS
			QTY	TYPE	BALLAST QUANTITY	
A	2x2'	0.125" PRISMATIC ACRYLIC LENS TROFFER	2	T8 32W U-TUBE	1	RECESSED
B	2x4'	0.125" PRISMATIC ACRYLIC LENS TROFFER	2	T8 32W	1	RECESSED
C	6"x4'	DIRECT/INDIRECT CURVED PENDANT MOUNTED FIXTURE WITH PRISMATIC ACRYLIC LENS AND END CAPS AND WHITE FINISH	2	T8 32W	1	PENDANT PROVIDE AIRCRAFT CABLE SUPPORTS.
C2	6"x4'	DIRECT/INDIRECT CURVED PENDANT MOUNTED FIXTURE WITH PRISMATIC ACRYLIC LENS AND END CAPS AND METALLIC ALUMINUM FINISH	2	T8 32W	1	PENDANT PROVIDE AIRCRAFT CABLE SUPPORTS.
D	6" APERTURE	DOWNLIGHT	1	PLT 26W	1	RECESSED
D2	6" APERTURE	DOWNLIGHT	1	PLT 26W	1	RECESSED WET LOCATION
D3	4" PENDANT	4" DIAMETER x 7" TALL OPAL BLOWN GLASS SHADE WITH ALUMINUM FINISH	1	PLT 26W	1	PENDANT WET LOCATION
E	24" DIAMETER PENDANT	DIRECT/INDIRECT DECORATIVE BOWL TYPE PENDANT WITH ALUMINUM FINISH, OPAL CENTER LENS.	4	PLT 26W	1	PENDANT PROVIDE AIRCRAFT CABLE SUPPORTS.
S	4'-0"	INDUSTRIAL STRIP	1	T8 32W	1	120V PROVIDE WIRE GUARD CAGE.
W	N/A	DECORATIVE SCONCE FIXTURE	N/A	LED	1	120V EXTERIOR RATED WALL MOUNTED
X	N/A	EXIT SIGN	N/A	LED	N/A	120V SEE PLANS FOR MOUNTING AND DIRECTIONAL ARROW REQUIREMENTS SURFACE

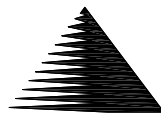
100% CONSTRUCTION RELEASE - FULLY SPRINKLERED

CONSULTANTS:



44 Point Breese Drive
Hewitt, NJ 07423
P. 973-853-5500
C. 201-819-7851
F. 973-853-4045

ARCHITECT/ENGINEERS:



Miller-Remick LLC
M.E.P. & Structural Engineering
A Service Disabled Veteran Owned Small Business
1010 KINGS HIGHWAY SOUTH
BUILDING ONE - 1st FLOOR
CHERRY HILL, NEW JERSEY 08034
PHONE: (856) 429-4000
FAX: (856) 429-0002

Drawing Title
ELECTRICAL LIGHTING PLAN

Approved: Project Director

Project Title
BUILDING 37 IS SUITE
DESIGN

Location
VA MED. CENTER, CANANDAIGUA,
NY

Date
03-20-2013

Checked
MC

Drawn
MR

Project Number
528A5-12-517

Building Number
37

Drawing Number
EL-101

Dwg. 40 of 55

Office of
Construction
and Facilities
Management

