

BUILDING 2 1st FLOOR  
1/16" = 1'-0"

## BUILDING 2 WINDOW REPLACEMENT GENERAL NOTES

WINDOW SYMBOLS  ON THE FLOOR PLAN ARE KEYED TO THE TYPICAL SECTIONS. CONTRACTOR SHALL VERIFY ALL WINDOW DIMENSIONS AND QUANTITIES. DS DESIGNATION IS FOR WINDOWS EQUIPPED WITH DETENTION SCREENS.

SEE THE DETAIL AT RIGHT FOR WINDOW INFORMATION BASED ON EFCCO SERIES 450 TRIPLE GLAZED INSWING CASEMENT WINDOWS.

ROOM FINISHES VARY. WINDOW CONTRACTOR SHALL BE RESPONSIBLE FOR VERIFICATION OF ALL ROOM FINISHES AND REPAIR OF ALL SURFACES RESULTING FROM THE REPLACEMENT OPERATIONS. A SITE SURVEY WILL BE CONDUCTED AT THE BEGINNING OF THIS CONTRACT TO DOCUMENT EXISTING CONDITIONS. COR SHALL BE NOTIFIED OF ANY CONDITION CHANGES AFTER THE SITE SURVEY. ANY DEBRIS INSIDE ROOMS, ON THE GROUNDS, SIDEWALKS, ETC., SHALL BE REMOVED AT THE END OF EACH DAY. COORDINATE WITH COTR FOR POSSIBLE DUMPSTER LOCATION. ALL WORK SHALL BE ACCOMPLISHED DURING NORMAL DUTY HOURS 8 AM TO 4:30 PM OR AS APPROVED BY COR AND CONTRACTING OFFICER.

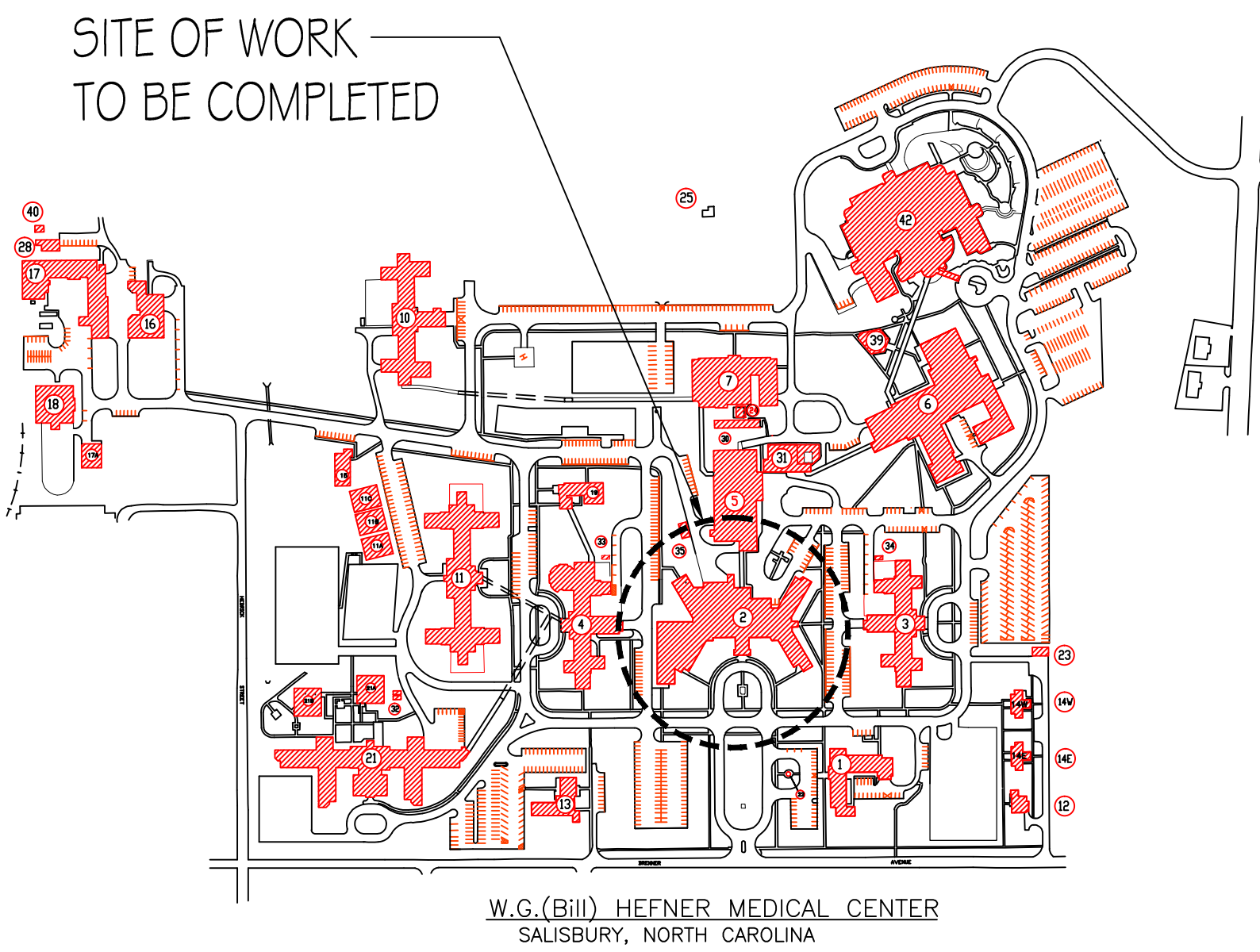
ALL SAFETY REGULATIONS OF THIS STATION SHALL BE OBSERVED.

SALISBURY VAMC WILL NOT PROVIDE STORAGE FOR WINDOWS OR EQUIPMENT. THE WINDOW CONTRACTOR SHALL PROVIDE TRAILER OR OTHER SUITABLE STORAGE FACILITY FOR WINDOWS. STORAGE TRAILER MAY BE PARKED IN SPACE AVAILABLE BEHIND THE WAREHOUSE OR AS APPROVED BY COTR OR CONTRACTING OFFICER.

BUILDING 2 IS AN INPATIENT AND OUTPATIENT CARE BUILDING WHICH WILL REQUIRE SCHEDULING THE ACCESS TO MANY SPACES. AFTER THE NOTICE TO PROCEED ON THIS CONTRACT THE CONTRACTOR AND COR SHALL SET A PRELIMINARY SCHEDULE BASED ON THE NUMBER OF WINDOWS THAT CAN SUCCESSFULLY BE REMOVED AND REPLACED IN A NORMAL WORK DAY. NO MORE WINDOWS CAN BE REMOVED THAN CAN BE REPLACED IN A NORMAL WORK DAY. MOST AREAS OF BUILDING 2 ARE OCCUPIED ALL DAY AND ALL NIGHT AND THE CONTRACTOR MUST PROVIDE A CLEAN HAZARD FREE WORK AREA AT EACH WINDOW. PRIOR SCHEDULING OF ACCESS TO EACH WINDOW IS REQUIRED.

CONTRACTOR SHALL BE RESPONSIBLE FOR REMOVING AND REPLACING DRAPES AND FURNITURE IN THE WAY OF ACCESSING EACH WINDOW LOCATION. WINDOW SHADES AND BLINDS SHALL BE REMOVED AND DISPOSED OF. FURNITURE SHALL BE REPLACED AS QUICKLY AS POSSIBLE.

A2 WINDOWS IN ROOMS 1009C,1029,2106, 2030A, 3011, 3035, 4017A, 4030, 5007, 5021 ARE CORNER WINDOWS WITH TWO WINDOWS SET IN ONE DIRECTION AND 4 WINDOWS AT 90 DEGREES. BOTH SETS OF WINDOWS ARE SET WITH CONNECTING MULLIONS. NEW WINDOWS SHALL BE SET IN A SIMILAR WINDOW CONFIGURATION.



Revision	Date

RECOMMEND APPROVAL			
REQUESTER	Date	CHIEF OF STAFF	Date
CHIEF OF SERVICE	Date	ASSOC. DIR. for OPERATIONS	Date
ASSOC. DIR. PATIENT CARE SVC.	Date	APPROVAL BY:	Date
MEDICAL CENTER DIRECTOR			

Drawing Title
PLANS 1st FLOOR, SITE PLAN AND NOTES
Approved: Safety Manager/M&O Supervisor
Approved:Chief of Facilities Management Svr.


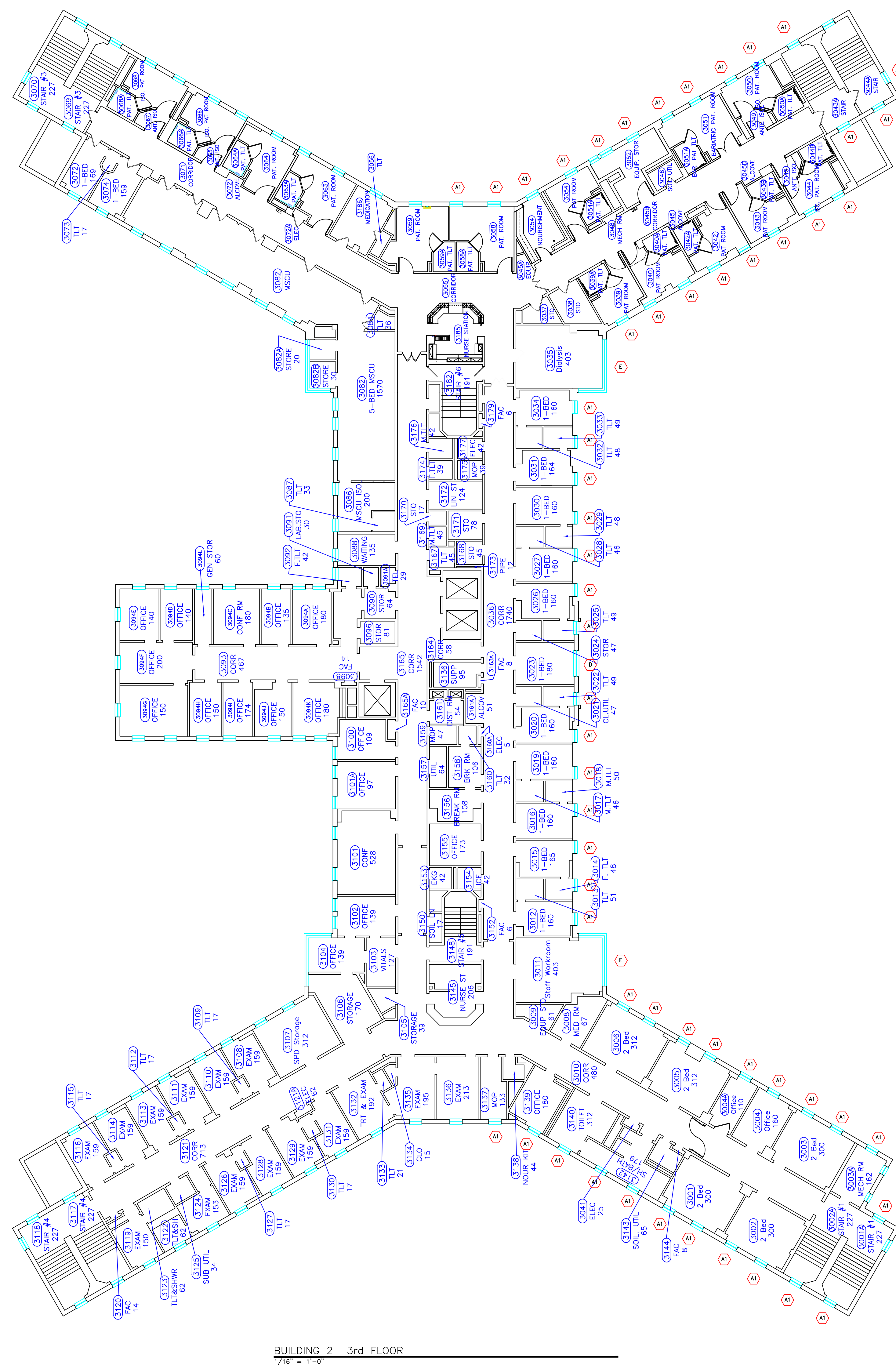
Project Title
REPLACE BUILDING 2 FRONT WINDOWS
Building Number
BLDG 2
Checked
GLM
Drawn
GLM
Location
W.G.(Bill) Hefner Medical Center 1601 Brenner Ave. Salisbury NC 28144

Date
2-28-2013
Project No.
659-13-113
DRAWING NO.
1
DWG. 1 OF 5



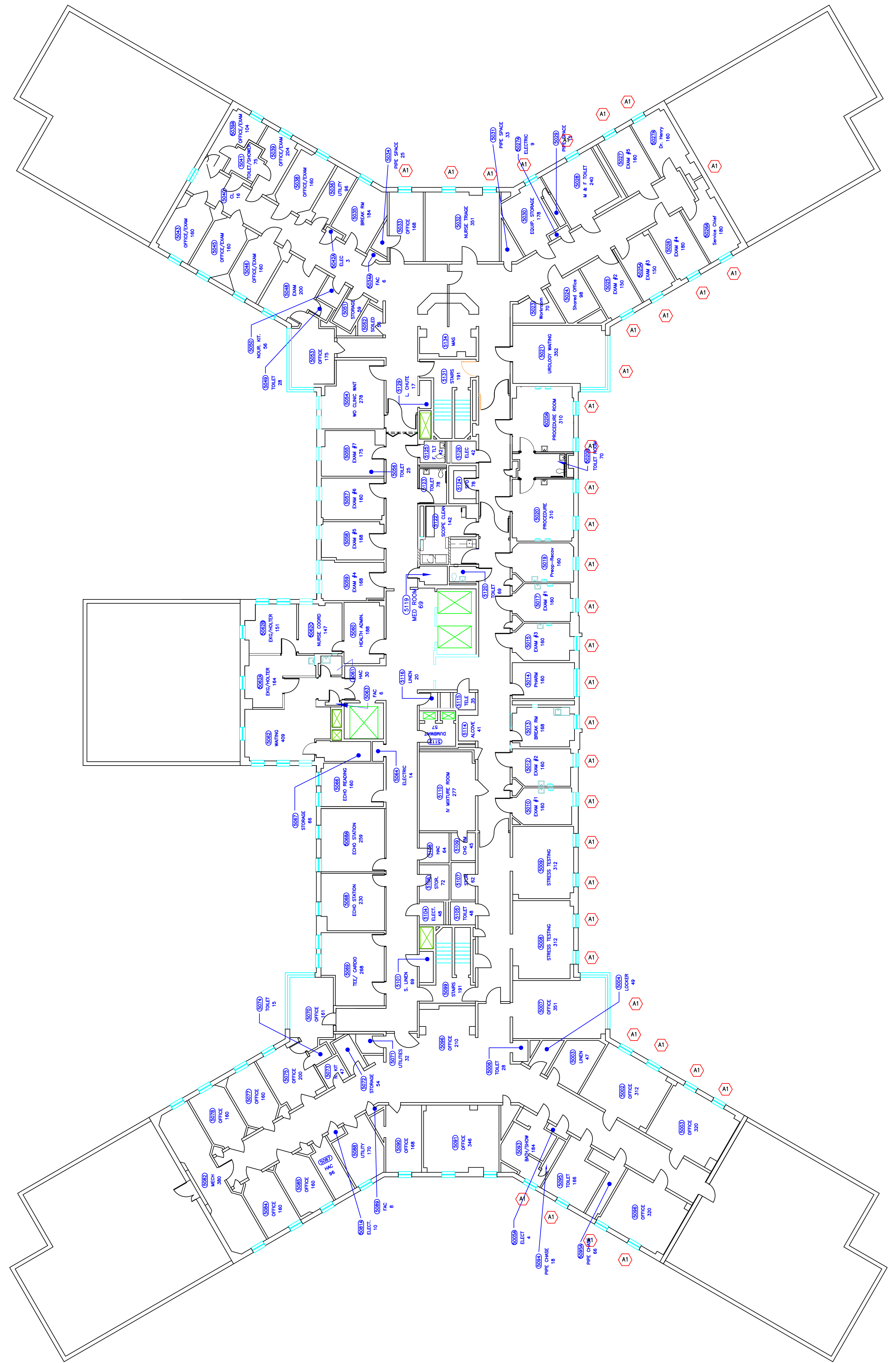
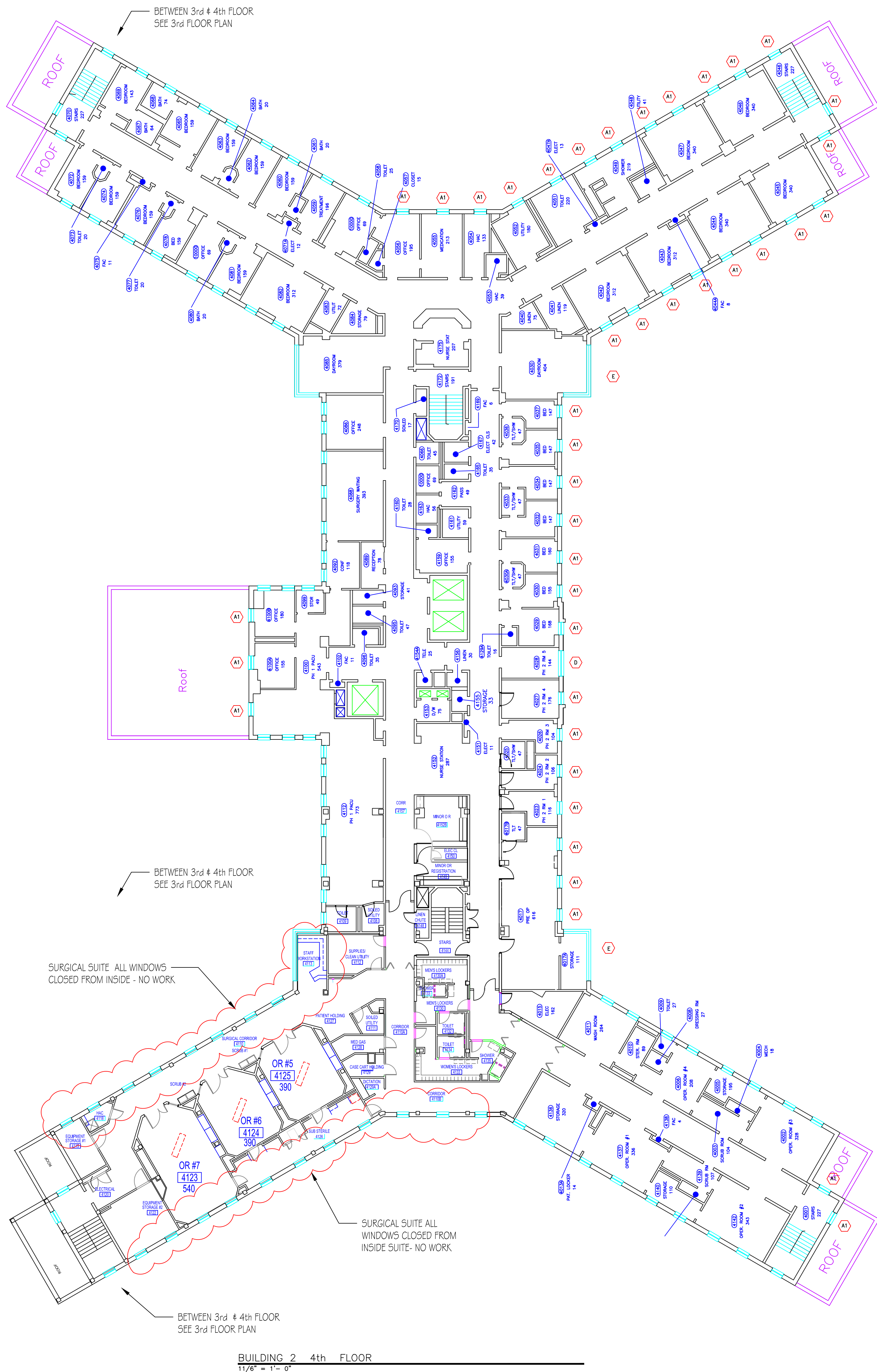
Department of  
Veterans Affairs





Department of  
Veterans Affairs





Revision	Date

RECOMMEND APPROVAL			
REQUESTER	Date	CHIEF OF STAFF	Date
CHIEF OF SERVICE	Date	ASSOC. DIR. for OPERATIONS	Date
ASSOC. DIR. PATIENT CARE SVC.	Date	ASSOC. DIR. for OPERATIONS	Date
APPROVAL BY:	Date	APPROVED:Chief of Facilities Management Svr.	Date
MEDICAL CENTER DIRECTOR			

Drawing Title	Plans for B2 Floors 4th and 5th
Approved: Safety Manager/M&O Supervisor	
Approved:Chief of Facilities Management Svr.	

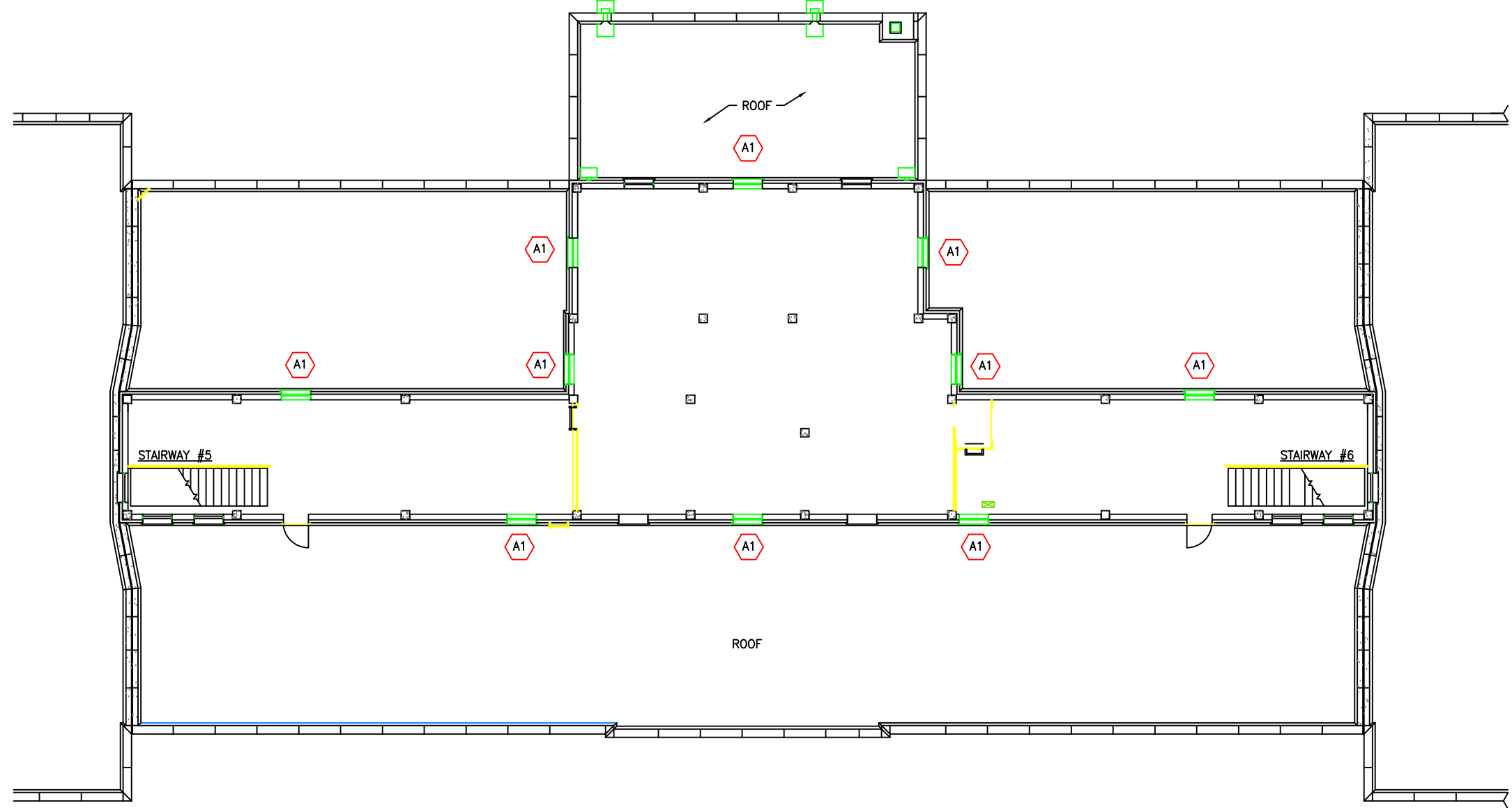
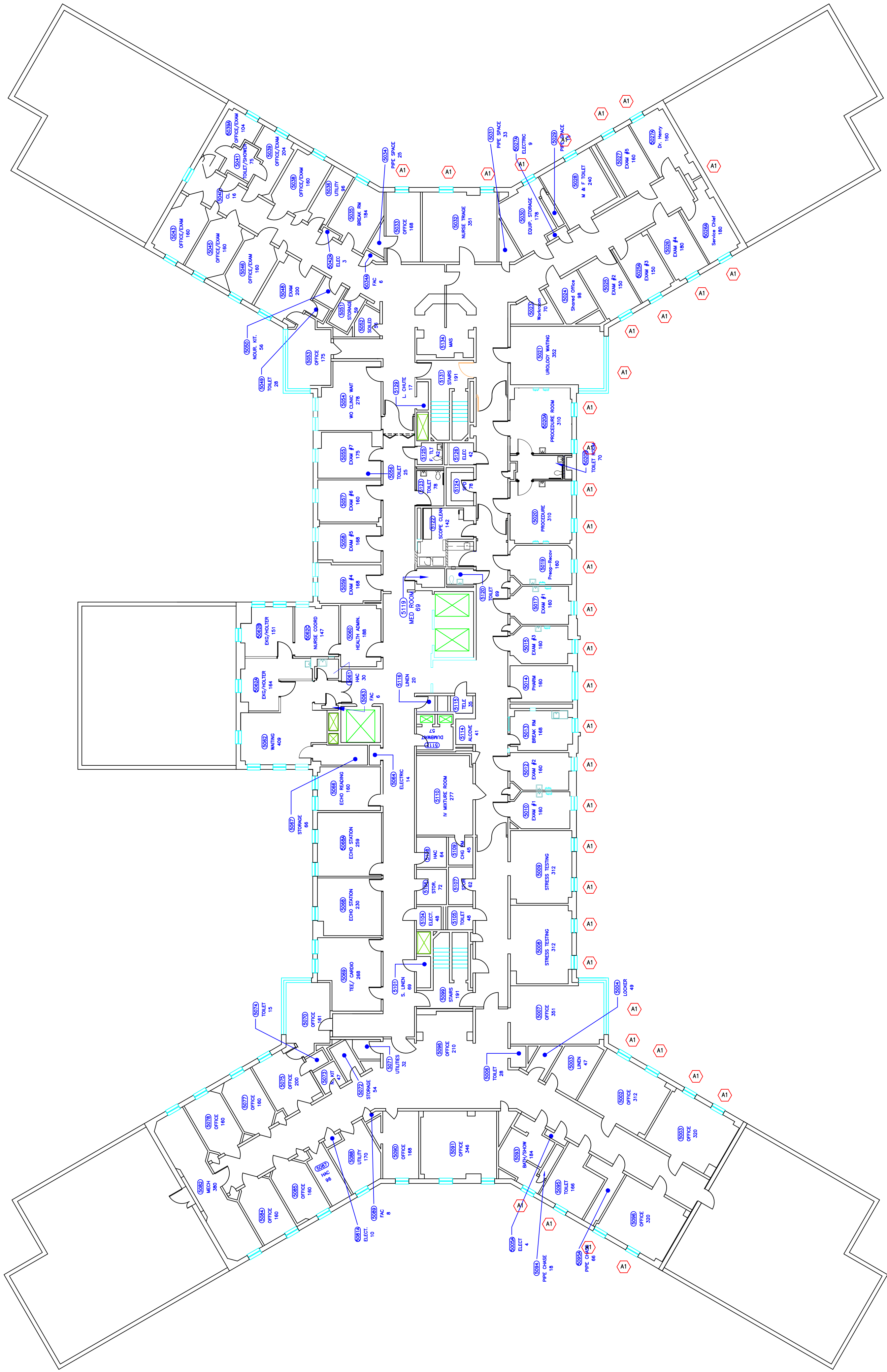
Project Title	REPLACE BUILDING 2 FRONT WINDOWS
Building Number	BLDG 2
Checked	GLM
Drawn	GLM
Location	W.G.(Bill) Hefner Medical Center 1601 Brenner Ave. Salisbury NC 28144

Date	2-28-2013
Project No.	659-13-113
DRAWING NO.	3
DWG. 3 OF 5	



Department of  
Veterans Affairs





BUILDING 2 FIFTH FLOOR  
1/16" = 1'-0"

Revision	Date

RECOMMEND APPROVAL			
REQUESTER	Date	CHIEF OF STAFF	Date
CHIEF OF SERVICE	Date	ASSOC. DIR. for OPERATIONS	Date
ASSOC. DIR. PATIENT CARE SVC.	Date	ASSOC. DIR. for OPERATIONS	Date
APPROVAL BY:	Date		
MEDICAL CENTER DIRECTOR			

Drawing Title
PLANS FOR B2 FLOORS
5th, SECTIONS, DETAILS
Approved: Safety Manager/M&O Supervisor
Approved:Chief of Facilities Management Svr.

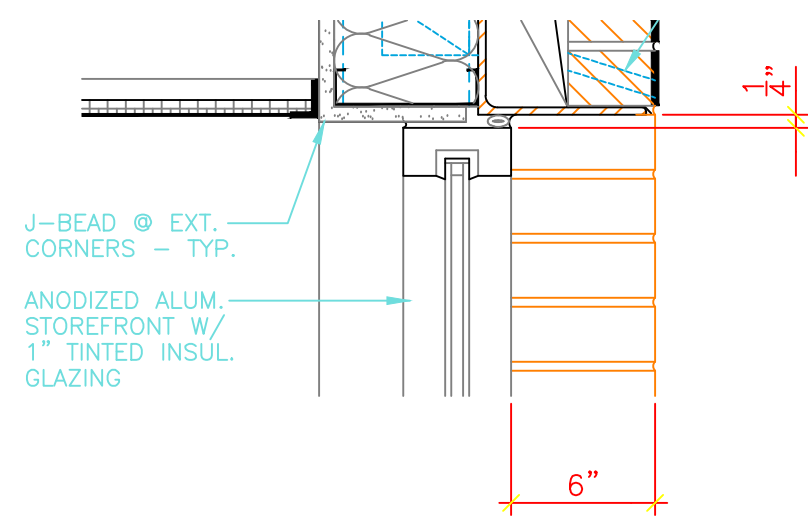
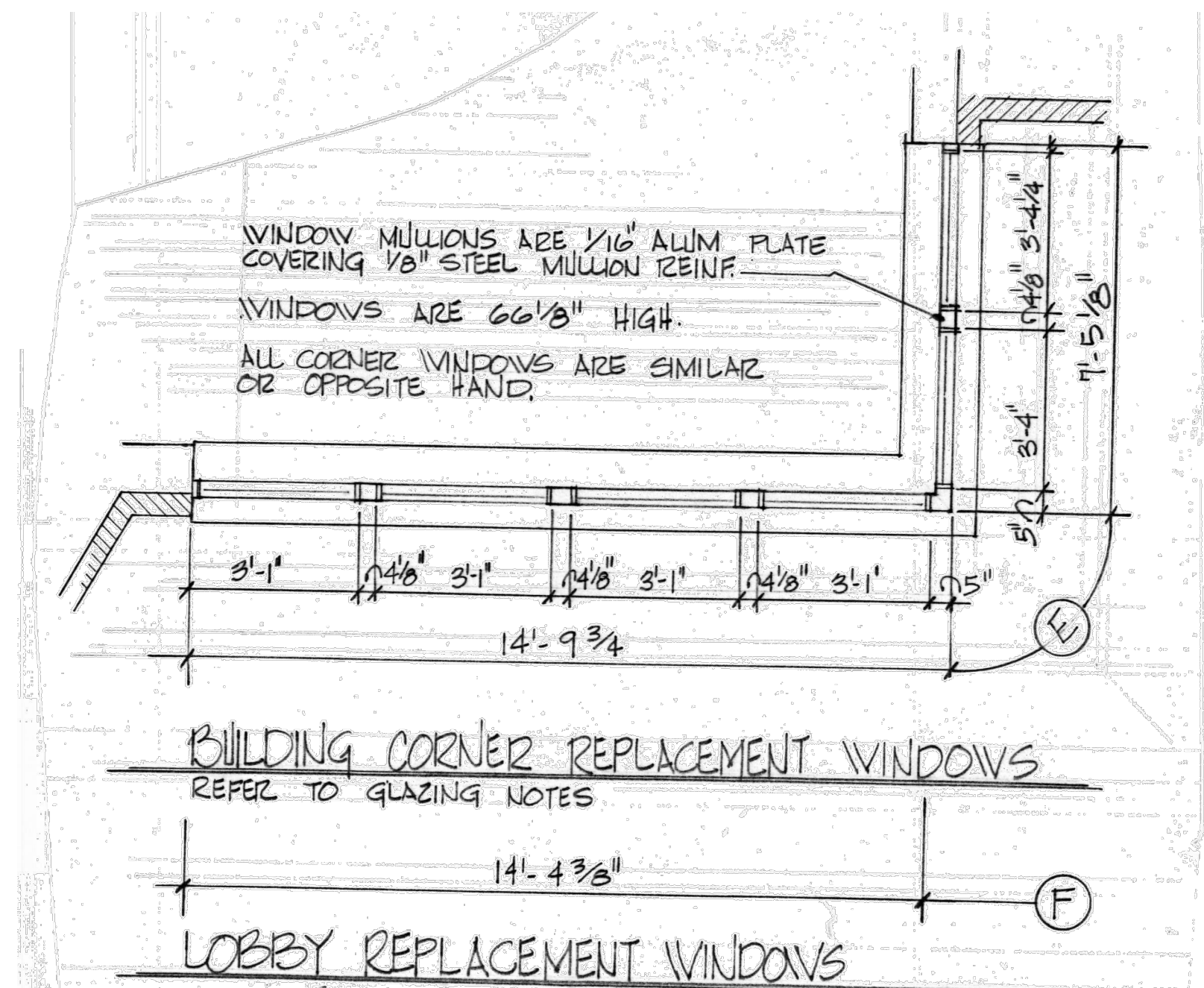
Project Title
REPLACE BUILDING 2
FRONT WINDOWS
Building Number
BLDG 2
Checked
GLM
Location
W.G.(Bill) Hefner Medical Center
1601 Brenner Ave.
Salisbury NC 28144

Date
2-28-2013
Project No.
659-13-113
DRAWING NO.
4
DWG. 4 OF 5

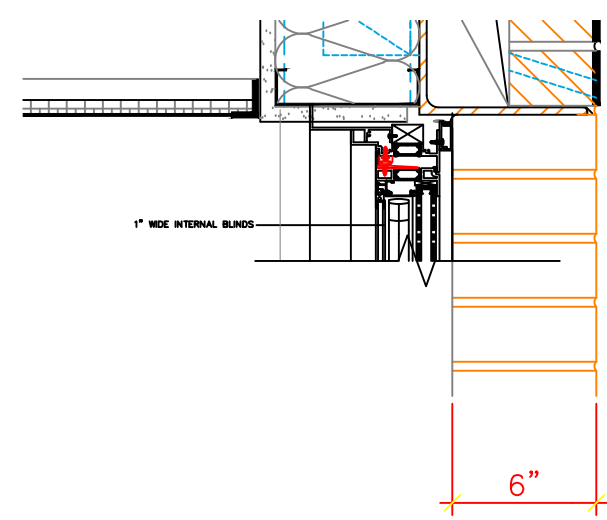


Department of  
Veterans Affairs

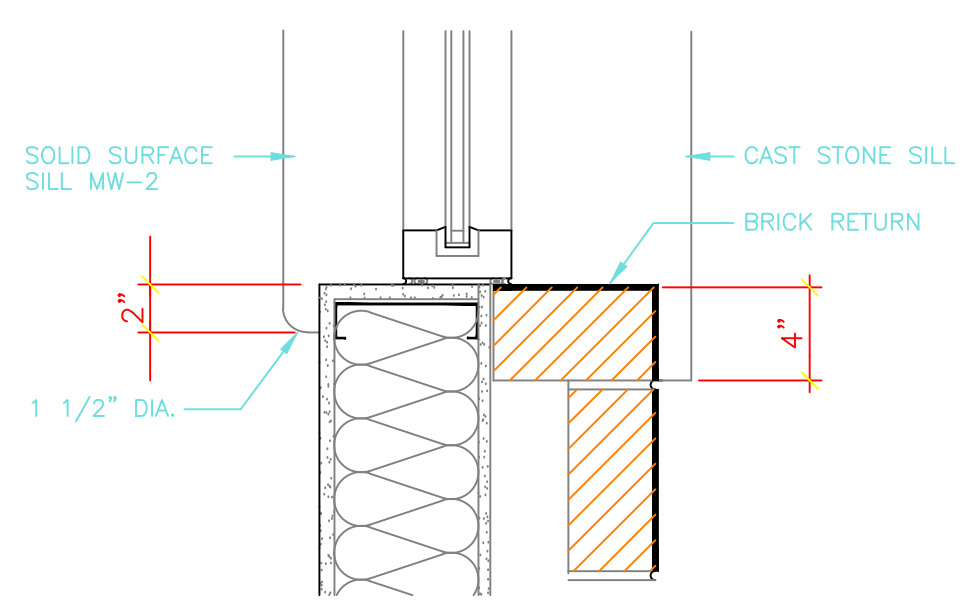




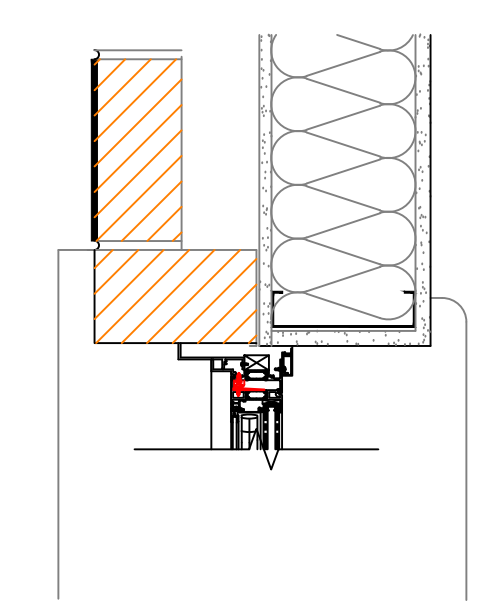
DEMO HEAD DETAIL



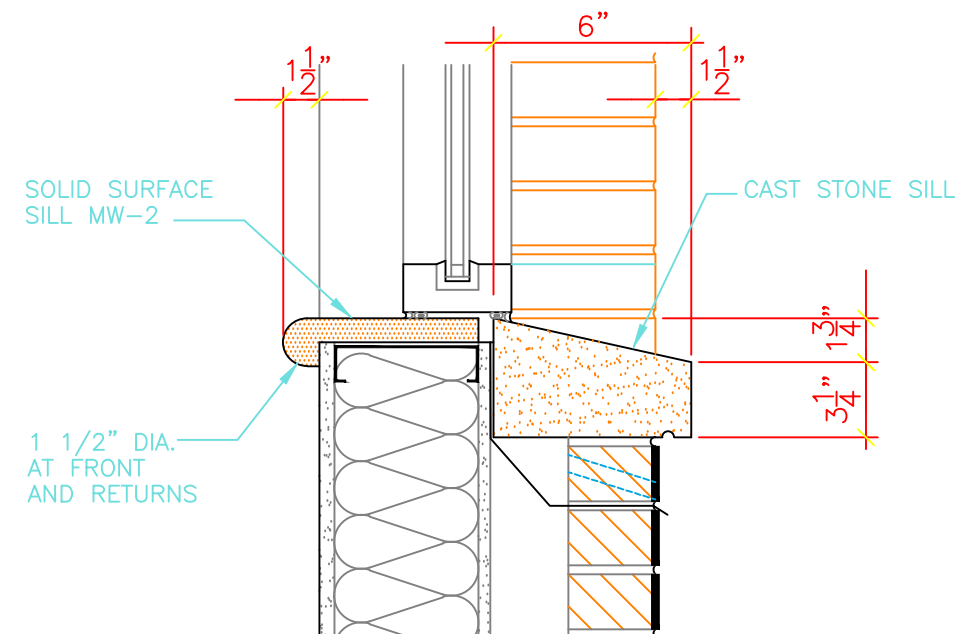
NEW WINDOW HEAD DETAIL



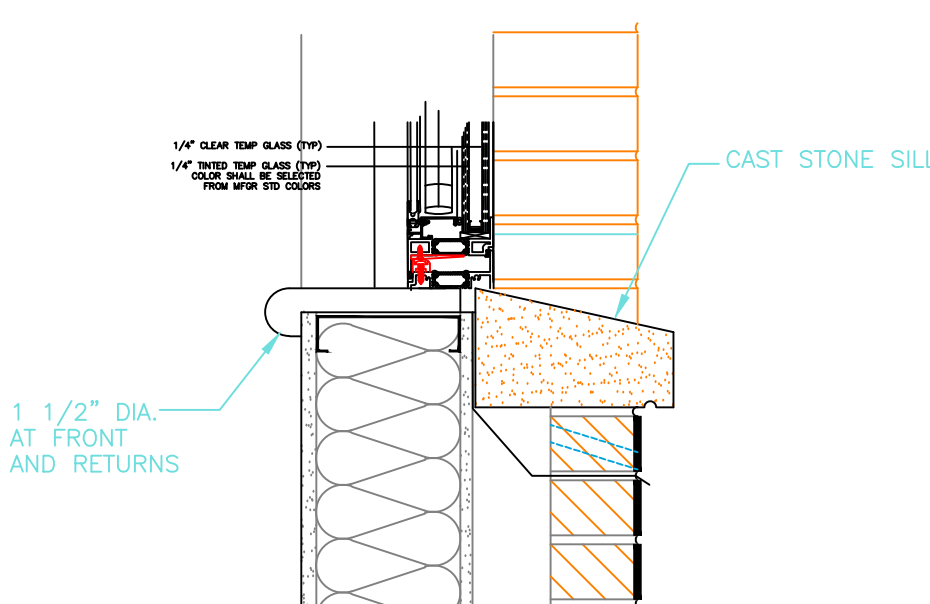
DEMO JAMB DETAIL



NEW WINDOW JAMB DETAIL



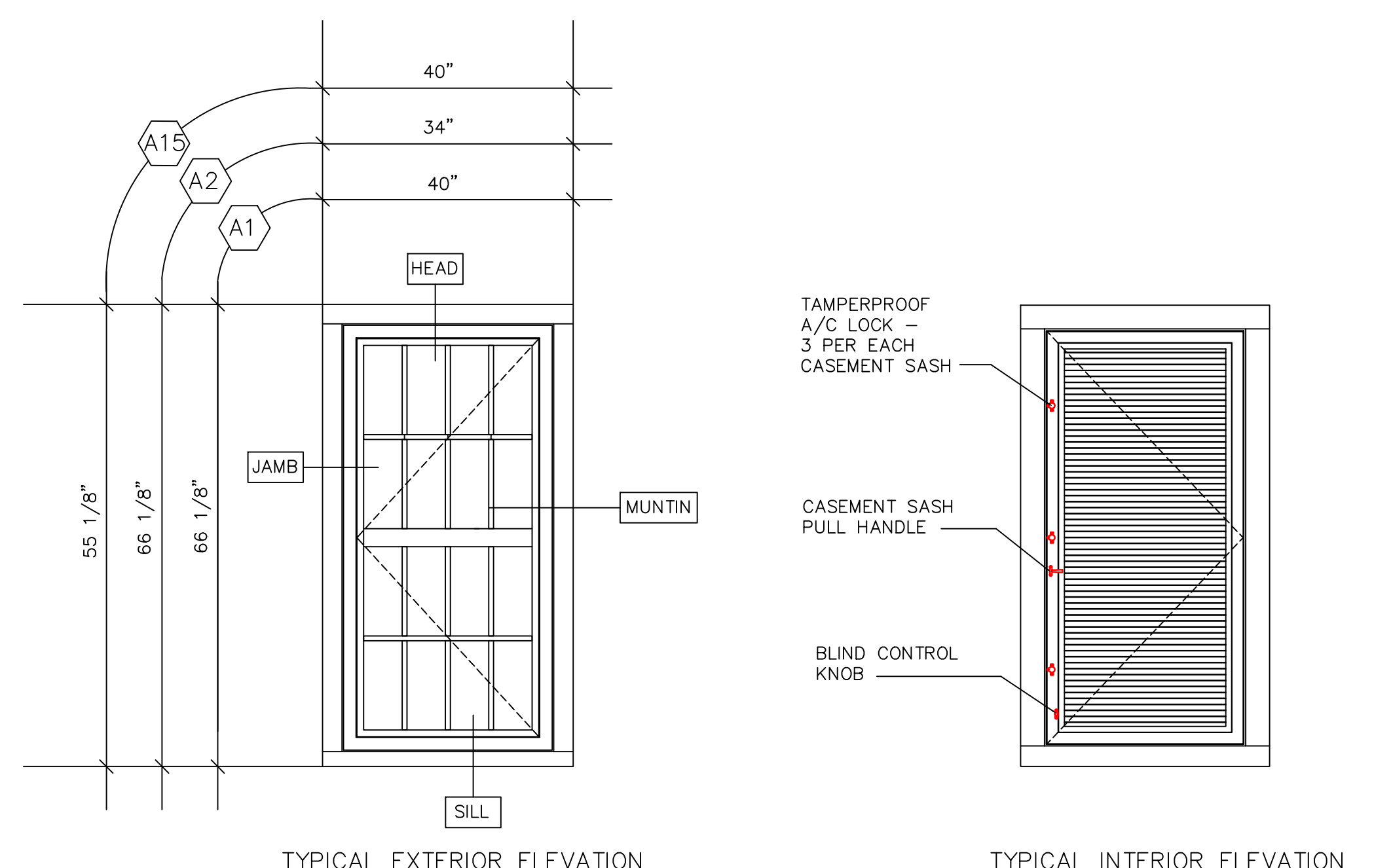
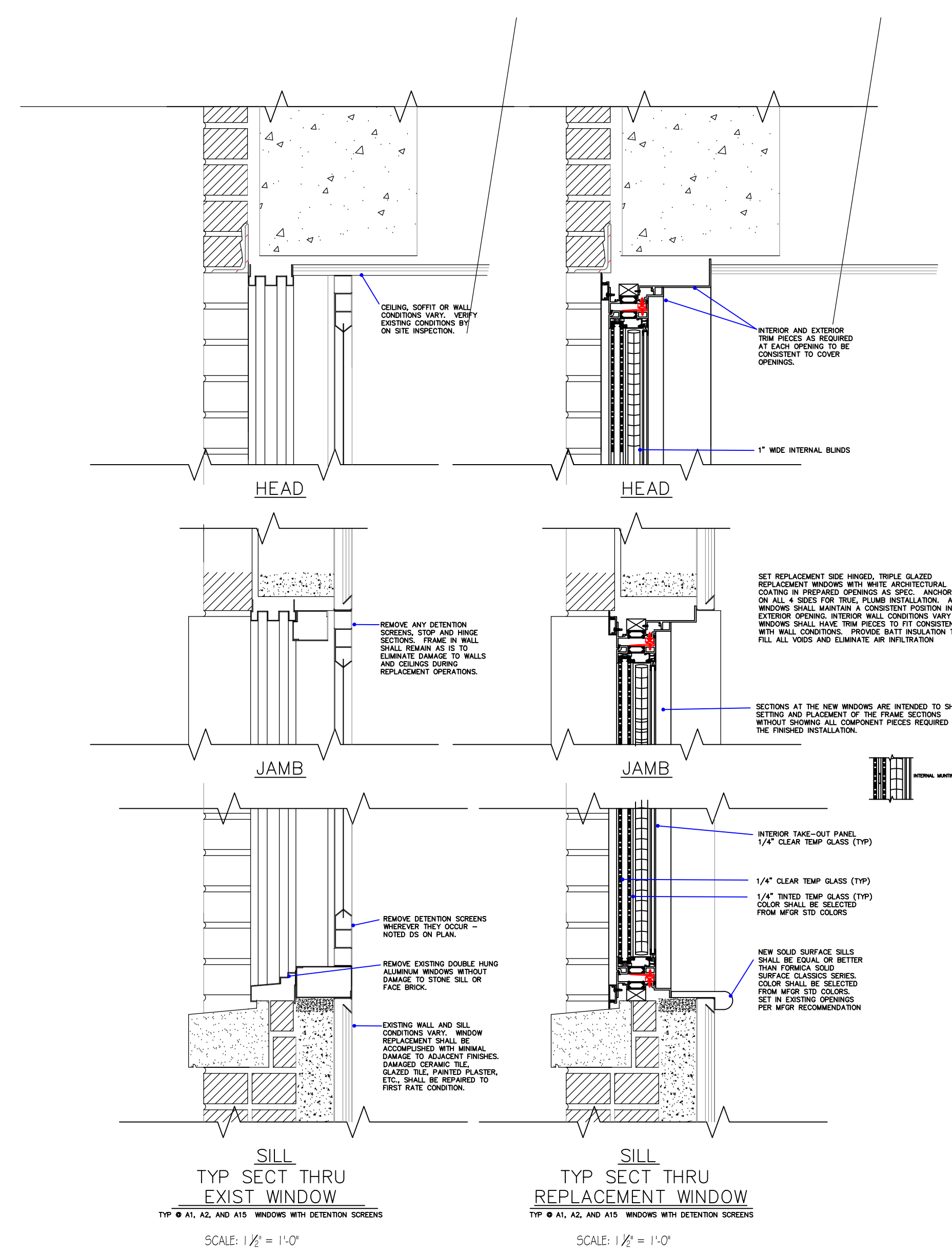
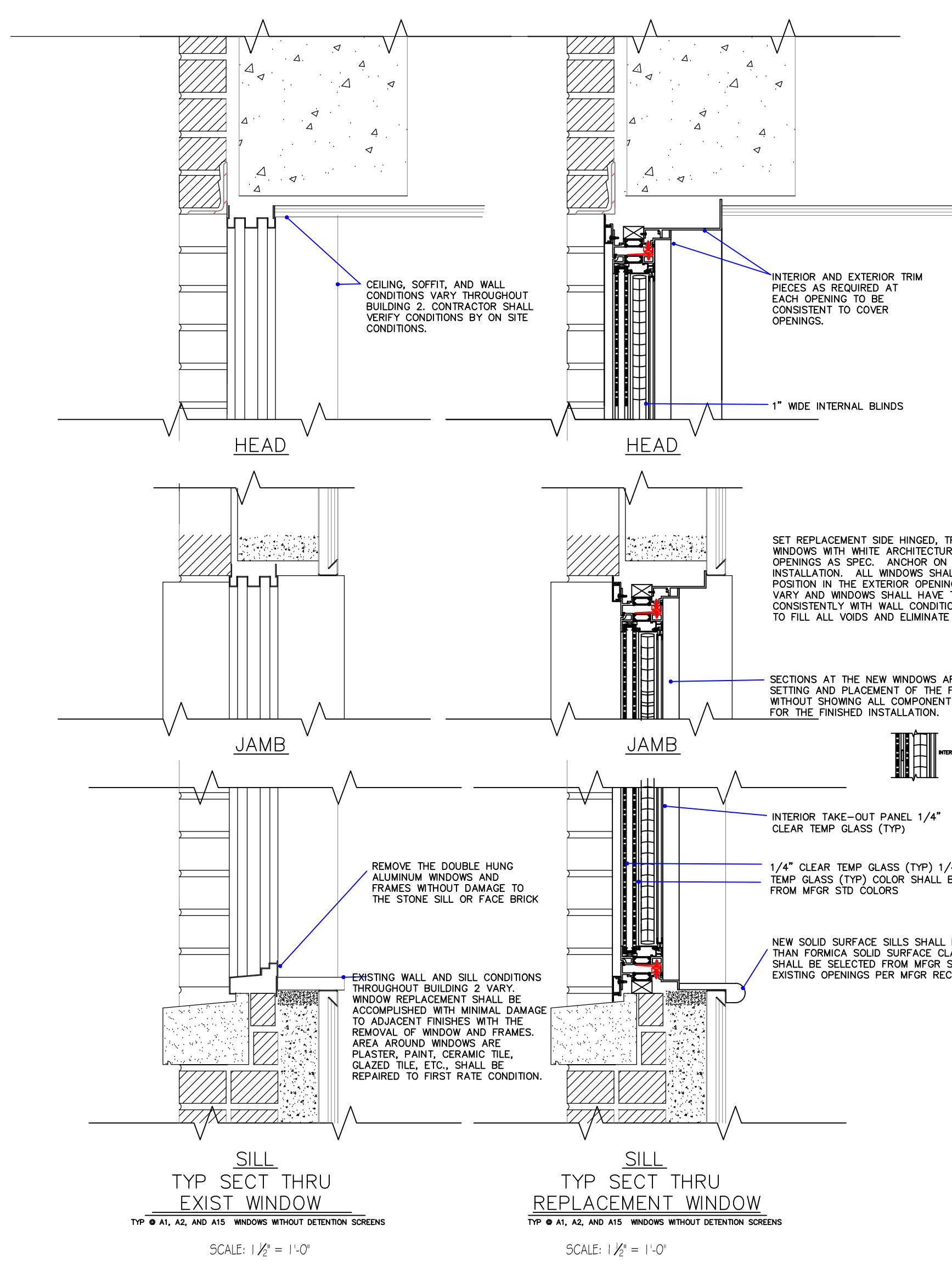
DEMO SILL DETAIL



NEW WINDOW SILL DETAIL

"G" WINDOW DETAILS

N.T.S.



ALL WINDOW DETAILS ARE BASED ON EFCO SERIES 450 INSWING CASEMENT HIGH PERFORMANCE THERMAL WINDOWS. THIS WINDOW SELECTION IS USED AS THE DESIGN BASIS AND IS NOT INTENDED TO LIMIT COMPETITION. WINDOW MANUFACTURER SHALL BE EQUAL OR BETTER THAN THE SPECIFICATION REQUIREMENTS.

FINISH SHALL BE WHITE ARCHITECTURAL COATING AS SPECIFIED.

PROVIDE ALUMINUM BUTT HINGES AT THE CASEMENT SASH. EQUIP EACH WINDOW WITH 3 EACH TAMPERPROOF WHITE BRONZE A/C LOCKS WHITE BRONZE SASH PULL HANDLE AND KEY RELEASE LIMIT OPENING ARMS.

GLAZING SHALL BE 1" INSULATED EXTERIOR WITH 1/4" CLEAR TEMP AT OUTSIDE, 1/4" TINTED TEMP AT INSIDE WITH LOW EMISSIVITY PYROLYTIC COATING HAVING AN 'E' OF 0.15 AND ARGON FILLED AIR SPACE. SEE ALSO SPECIFICATIONS. INTERIOR TAKE-OUT PANEL SHALL BE 1/4" CLEAR TEMPERED GLASS.

PROVIDE BLINDS WITH 1" SLATS BETWEEN THE EXTERIOR INSULATED GLASS AND THE INTERIOR TAKE-OUT PANEL. TYPICAL FOR ALL.

THE CONTRACTOR SHALL SUPPLY 5 ADDITIONAL A2 WINDOWS FOR FUTURE INSTALLATION BY THE VA FOR THE REPLACEMENT OF EXISTING WINDOWS THAT HAVE A/C UNITS INSTALLED IN THE LOWER HAVE OF WINDOWS. THE EXTRA WINDOWS SHALL BE GRATED AND CLEARLY MARKED OF MANUFACTURE, SIZE AND ALSO WITH THE IDENTIFICATION OF "A2" WINDOW ON GRATE.

		RECOMMEND APPROVAL				Drawing Title <b>PLANS FOR B2 FLOORS 5th, SECTIONS, DETAILS</b>		Project Title <b>REPLACE BUILDING 2 FRONT WINDOWS</b>		Date 2-28-2013			Department of Veterans Affairs	
		REQUESTER	Date	CHIEF OF SERVICE	Date	CHIEF OF STAFF	Date	Building Number BLDG 2	Checked	Drawn GLM	Project No. 659-13-113			
		ASSOC. DIR. PATIENT CARE SVC.	Date	ASSOC. DIR. for OPERATIONS	Date	Approved: Safety Manager/M&O Supervisor	Location W.G.(BIII) Hefner Medical Center 1601 Brenner Ave. Salisbury NC 28144	DWG. 5 OF 5						
		APPROVAL BY: MEDICAL CENTER DIRECTOR	Date	Approved:Chief of Facilities Management Svr.	Date									
Revision		Date												