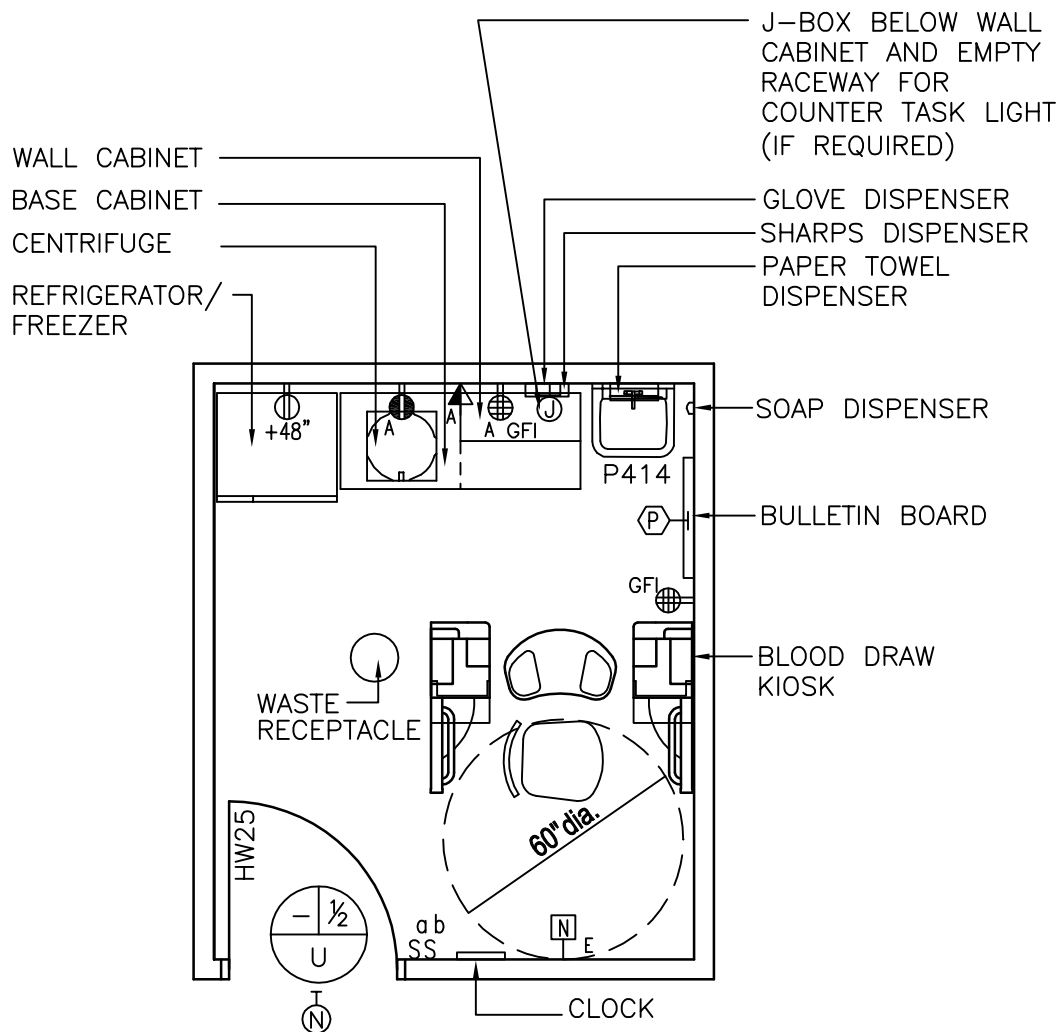


Blood Draw (LBVP1)

Floor Plan



120 NSF/ 11.2 NSM (SHOWN ABOVE)

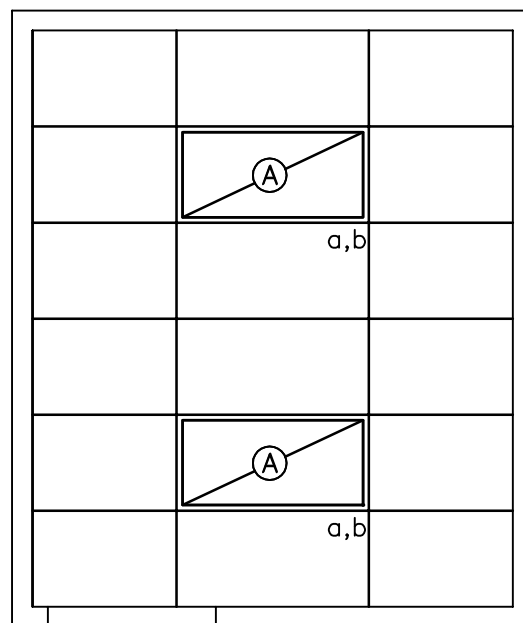
ONCOLOGY LAB SIMILAR REDUCE TO 80 NSF/ 7.4 NSM

SCALE $\frac{1}{4}" = 1'-0"$



NOTE: Guide plates are graphical representations of selected room types, illustrating the integration of space, components, systems, and equipment. They provide typical configurations and general technical guidance, and are not intended to be project specific. Specific infrastructure design requirements are contained in VA Design Manuals and Space Planning Criteria located in the VA Technical Information Library.

Blood Draw (LBVP1) Reflected Ceiling Plan



120 NSF/ 11.2 NSM (SHOWN ABOVE)

ONCOLOGY LAB SIMILAR REDUCE TO 80 NSF/ 7.4 NSM

SCALE $\frac{1}{4}$ " = 1'-0"



NOTE: Guide plates are graphical representations of selected room types, illustrating the integration of space, components, systems, and equipment. They provide typical configurations and general technical guidance, and are not intended to be project specific. Specific infrastructure design requirements are contained in VA Design Manuals and Space Planning Criteria located in the VA Technical Information Library.

Blood Draw (LBVP1)

Design Standards

ARCHITECTURAL

Ceiling:	AT
Ceiling Height:	9'-0" (2700 mm)
Wall Finish:	GWB-P
Wainscot:	--
Base:	RB
Floor Finish:	VCT
Slab Depression:	--
Sound Protection:	STC 40
Notes:	--

SPECIAL EQUIPMENT

	--
--	----

LIGHTING

General:	--
Special:	--

- Notes:
- 1) 2' x 4' (600 mm x 1200 mm) recessed fluorescent light fixture, acrylic prismatic lens, w/ F32T8 lamps, 3500°K, CRI=70 (minimum).
 - 2) The foot-candle level is average maintained.
 - 3) Provide ballasts per fixture for desired switching configuration. To provide a uniform lighting level, switch inner lamp(s) on first switch and outer lamps on second switch.
 - 4) Exact quantity, location, and lamping of light fixtures shall be chosen to meet the foot-candle requirement.
 - 5) Fluorescent nurse call light.
 - 6) Fixture description for alternate 80 NSF room is the same as described in Note 1 above. Orient two fixtures at 90° to layout for 120 NSF room. Reduce fixture wattage to approximately 65% that required for 120 NSF room.

POWER

General:	As Shown
Emergency:	As Shown
Notes:	--

COMMUNICATION/SPECIAL SYSTEMS

Data:	Yes
Telephone:	Yes
Intercom:	--
Nurse Call:	Yes
Public Address:	--
Radio/Entertainment:	--
MATV:	--
CCTV:	--
MID:	--
Security/Duress:	Yes
VTEL:	--
VA Satellite TV:	--
Notes:	--

HEATING, VENTILATING AND AIR CONDITIONING

Inside Design Conditions:	70°F (21°C) to 75°F (24°C) Dry-Bulb Temperature
	30 Percent to 50 Percent Relative Humidity
Minimum Air Changes per Hour:	6
100% Exhaust:	No
100% Outside Air:	No
Room Air Balance:	Neutral (0)
Dedicated Exhaust System:	No
Occupancy:	2
AC Load-(Equipment):	As Required
AC Load-(Light):	As Required
Notes:	1) Year around conditions.

PLUMBING AND MEDICAL GASES

Cold Water:	Yes
Hot Water:	Yes
Laboratory Air:	--
Laboratory Vacuum:	--
Sanitary Drain:	Yes
Reagent Grade Water:	--
Medical Air:	--
Medical Vacuum:	--
Oxygen:	--
Notes:	--



Blood Draw (LBVP1)

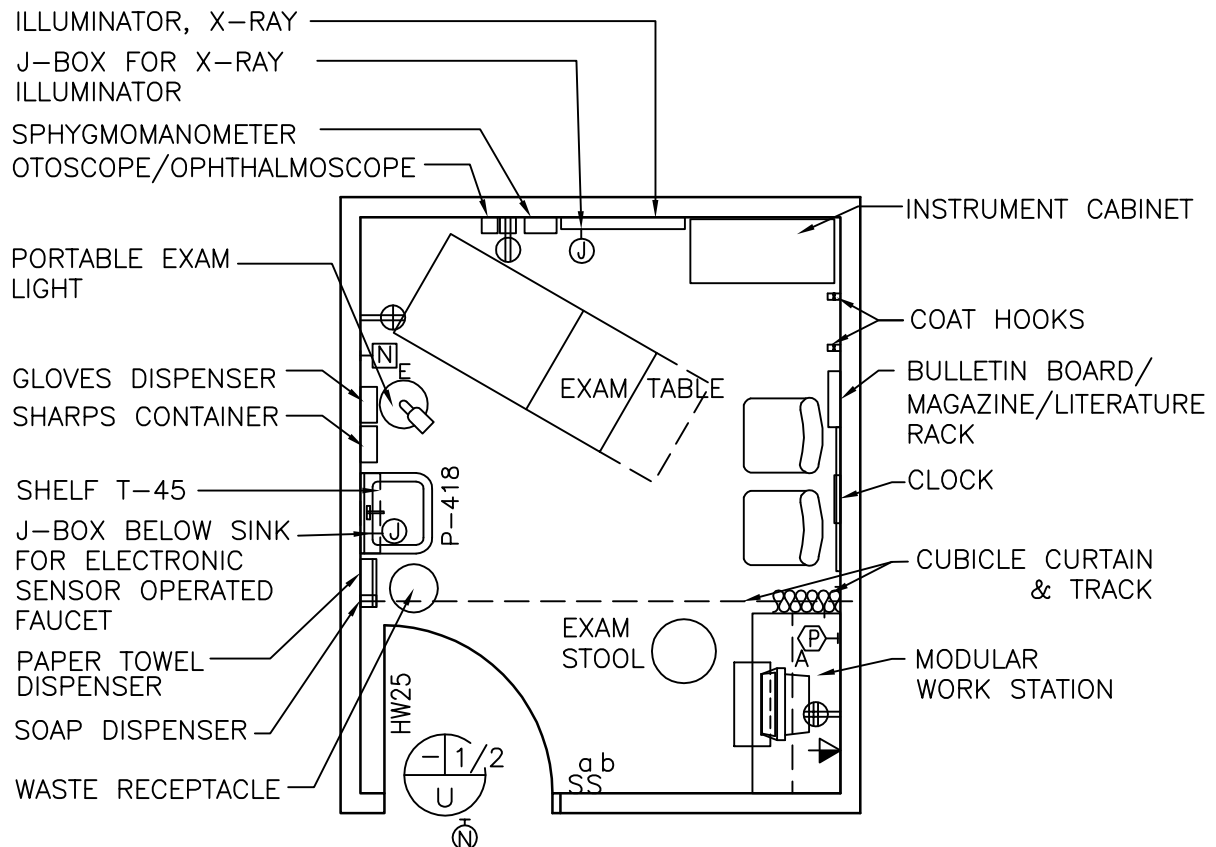
Equipment List

JSN	SYMBOL	QTY	AI	DESCRIPTION
CT030	Top 10A	1	CC	Counter top, high pressure plastic laminate, decorative, over plywood or particle board core, 1-1/4" (25 mm) thick (PG-18-1, MCS 12 36 00)
C03F0	VL4	1	CC	Cabinet, under counter, with 2 drawers, 2 hinged doors and 1 adjustable shelf, 30" x 22" x 31" (750 mm x 550 mm x 775 mm) for floor mounted add, 5" (125 mm) toe base (PG-18-1, MCS 12 31 00, 12 32 00)
	VL5	1	CC	Cabinet, under counter, with 4 drawers, 1 hinged door and 2 adjustable shelves, 30" x 22" x 31" (750 mm x 550 mm x 775 mm) for floor mounted add, 5" (125 mm) toe base (PG-18-1; MCS 12 31 00, 12 32 00)
CE040	VL25	1	CC	Cabinet, wall, with sloping top, 2 glazed sliding doors and 2 adjustable shelves, 30" x 13" x 30" (750 mm x 325 mm x 750 mm) (PG-18-1, MCS 12 31 00, 12 32 00)
P3100	P-414	1	CC	Lavatory, straight back (PG-18-1, MCS 22 40 00)
A1010		1	CC	Outlet, telephone/data, wall mounted (PG-18-1, MCS 27 15 00)
		AR	CC	Receptacle, electrical, quadruplex, ground fault interrupter (PG-18-1, MCS 26 27 26)
		AR	CC	Receptacle, electrical, duplex (PG-18-1, MCS 26 27 26)
		1	CC	Nurse call, emergency station with corridor signal light (PG-18-1, MCS 27 52 23)
		1	CC	Alarm button, security/duress (PG-18-1, MCS 27 52 31)
A5075		1	VV	Dispenser, soap, liquid, wall mounted
A5080		1	VV	Dispenser, paper towel, surface mounted
F2017		1	VV	Receptacle, waste, step on type, approx. 12" (300 mm) diameter
M1410		1	VV	Kiosk, blood draw or chair, laboratory, blood drawing with storage
F3010 or F3025		1	VV	Bulletin board, 30" x 42" (750 mm x 1050 mm) Note: F3010 is 48" x 48" (1200 mm x 1200 mm) and F3025 is wood frame.
R7250		1	VV	Refrigerator/freezer, 120 volt, domestic, approx. 31" x 28" x 66" (775 mm x 700 mm x 1650 mm)
L1350		1	VV	Centrifuge, non-refrigerated, bench model, 120 volt, approx. 19" H x 16" W x 19" D (480 mm H x 400 mm W x 480 mm D)
F3200		1	VV	Clock, atomic, battery operated
A5106		1	VV	Sharps container/glove dispenser



Exam Room (Multi-Purpose) (EXRG3)

Floor Plan



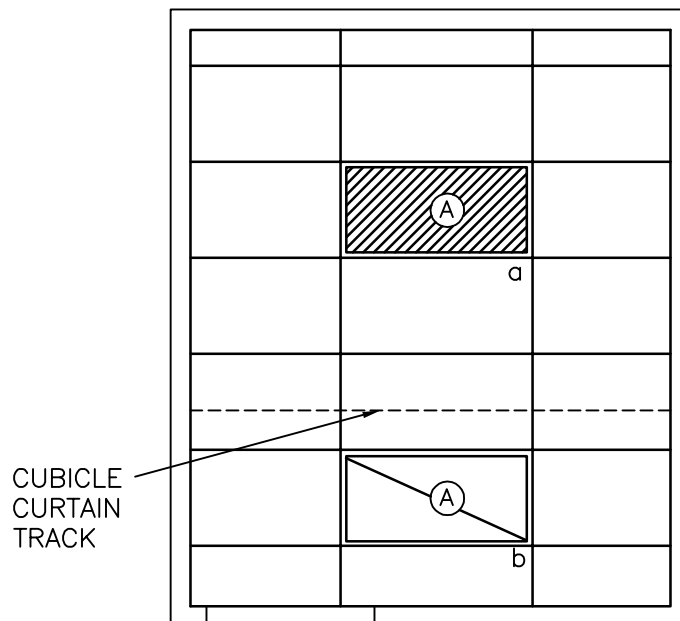
120 NSF/ 11.2 NSM (Shown above)
 Audiology similar: 150 NSF/ 13.9 NSM

SCALE $\frac{1}{4}" = 1'-0"$ M2 1 0 1 2 4Ft

NOTE: Guide plates are graphical representations of selected room types, illustrating the integration of space, components, systems, and equipment. They provide typical configurations and general technical guidance, and are not intended to be project specific. Specific infrastructure design requirements are contained in VA Design Manuals and Space Planning Criteria located in the VA Technical Information Library.

Exam Room (Multi-Purpose) (EXRG3)

Reflected Ceiling Plan



120 NSF/ 11.2 NSM (Shown above)
Audiology similar: 150 NSF/ 13.9 NSM

SCALE $\frac{1}{4}" = 1'-0"$



NOTE: Guide plates are graphical representations of selected room types, illustrating the integration of space, components, systems, and equipment. They provide typical configurations and general technical guidance, and are not intended to be project specific. Specific infrastructure design requirements are contained in VA Design Manuals and Space Planning Criteria located in the VA Technical Information Library.

Exam Room (Multi-Purpose) (EXRG3)

Design Standards

ARCHITECTURAL

Ceiling:	GWB Lay-in Panels
Ceiling Height:	9'-0" (2700 mm)
Wall Finish:	GWB-P
Wainscot:	--
Base:	RB
Floor Finish:	VCT
Slab Depression:	--
Sound Protection:	STC 40
Notes:	--

SPECIAL EQUIPMENT**LIGHTING**

General:	--
Special:	--
Notes:	<ol style="list-style-type: none"> 1) 2' x 4' (600 mm x 1200 mm) recessed fluorescent light fixture, acrylic prismatic lens, w/ F32T8 lamps, 3500°K, CRI=70 (minimum). 2) Portable Examining Light 3) The foot-candle level is average maintained. 4) Provide ballasts per fixture for desired switching configuration. To provide a uniform lighting level, switch inner lamp(s) on first switch and outer lamps on second switch. 5) Exact quantity, location, and lamping of light fixtures shall be chosen to meet the foot-candle requirement. 6) Fluorescent nurse call light. 7) Fixture description for alternate 150 NSF room is the same as described in Note 1 above. Orient both fixtures in the same manner as shown for 120 NSF room. Increase overall room wattage by 20%.

POWER

General:	As Shown
Emergency:	As Shown
Notes:	<ol style="list-style-type: none"> 1) Coordinate location and height of work station receptacles with modular furniture. 2) Exam table may be wall outlet connected.

COMMUNICATION/SPECIAL SYSTEMS

Data:	Yes
Telephone:	Yes
Intercom:	--
Nurse Call:	Yes
Public Address:	--
Radio/Entertainment:	--
MATV:	--
CCTV:	--
MID:	--
Security/Duress:	Yes
VTEL:	--
VA Satellite TV:	--
Notes:	1) Coordinate location and height of work station telephone/data outlets with modular furniture.

HEATING, VENTILATING AND AIR CONDITIONING

Inside Design Conditions:	70°F (21°C) to 75°F (24°C) Dry-Bulb Temperature
	30 Percent to 50 Percent Relative Humidity
Minimum Air Changes per Hour:	6
100% Exhaust:	No
100% Outside Air:	No
Room Air Balance:	Neutral (0)
Dedicated Exhaust System:	No
Occupancy:	2
AC Load-(Equipment):	As Required
AC Load-(Light):	As Required
Notes:	1) Year around conditions.

PLUMBING AND MEDICAL GASES

Cold Water:	Yes
Hot Water:	Yes
Laboratory Air:	--
Laboratory Vacuum:	--
Sanitary Drain:	Yes
Reagent Grade Water:	--
Medical Air:	--
Medical Vacuum:	--
Oxygen:	--
Notes:	--



Exam Room (Multi-Purpose) (EXRG3)

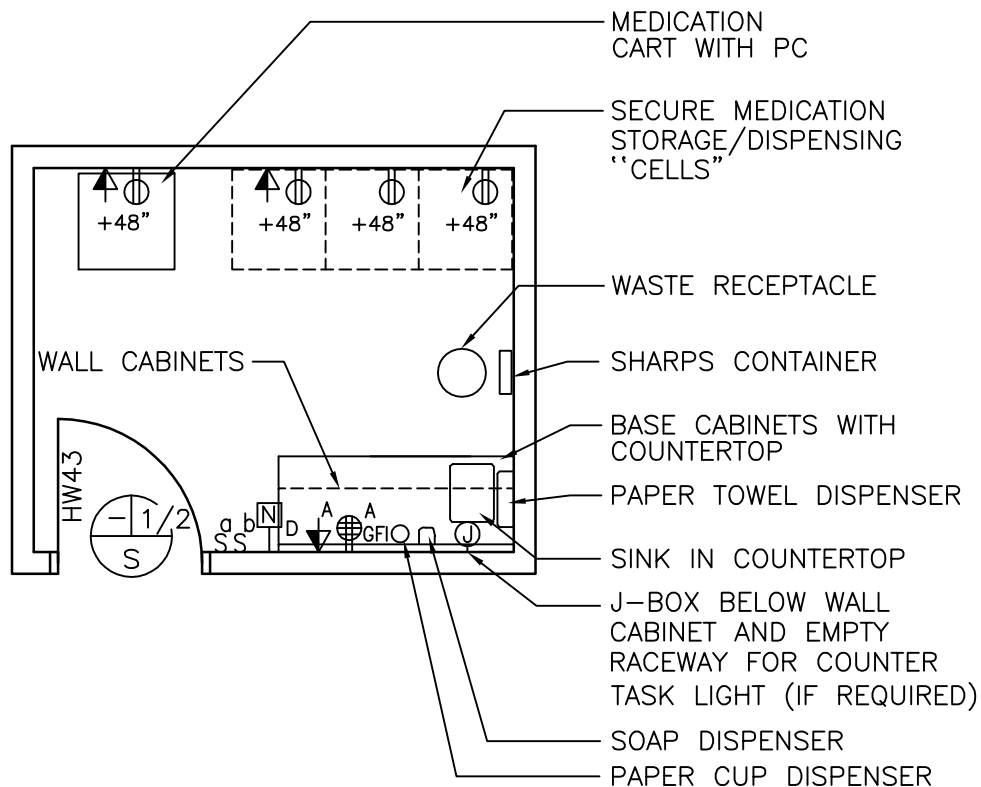
Equipment List

JSN	SYMBOL	QTY	AI	DESCRIPTION
P3100	P-418	1	CC	Lavatory, sensor control (PG-18-1, MCS 22 40 00; PG-18-4, NCS SD 22 40 00)
A5165	T45	1	CC	Shelf, corrosion resisting steel, 12" W x 5" D (300 mm W x 125 mm D) (PG-18-1, MCS 10 28 00; PG-18-4, NCS SD 10 28 00-4)
A5180		1	CC	Track, curtain, cubicle, ceiling type, surface mounted (PG-18-1, MCS 10 21 23)
A1010		1	CC	Outlet, telephone/data, wall mounted (PG-18-1, MCS 27 15 00)
		1	CC	Receptacle, electrical, quadruplex, for computer equipment items (PG-18-1, MCS 26 27 26)
		AR	CC	Receptacle, electrical, duplex (PG-18-1, MCS 26 27 26)
		1	CC	Receptacle, electrical, duplex, with ground fault interrupter (PG-18-1, MCS 26 27 26)
		1	CC	Nurse call, emergency station, with pull cord and corridor signal light (PG-18-1, MCS 27 52 23)
		1	CC	Alarm button, security/duress (PG-18-1, MCS 27 52 31)
A5075		1	VV	Dispenser, soap, liquid, wall mounted
A5080		1	VV	Dispenser, paper towel, surface mounted
F2017		1	VV	Receptacle, waste, step on type, approx. 12" (300 mm) diameter
A5145		2	VV	Hook, coat, wall mounted
A5180		1	VV	Curtain, cubicle
M9050		1	VV	Table, examining, padded, adjustable top, approx. 74" x 21" x 30" (1850 mm x 525 mm x 750 mm)
F0210		AR	VV	Chair, straight, without arms
E0210		1	VV	Modular work station with under counter keyboard tray, overhead storage, and wall hanger strips.
F0340		1	VV	Stool, examining
M3085		1	VV	Cabinet, instrument and treatment, 36" W x 16" D x 78" H (900 mm W x 400 mm D x 1950 mm H)
X3930		AR	VV	Illuminator, x-ray film, 120 volts, wall mounted, individual switch for two, 14" x 17" (350 mm x 425 mm) radiographs, 31" W x 20" H (775 mm W x 500 mm H)
M7401		1	VV	Light, examining, portable, 120 volt, approx. 18" diameter x 75" H (450 mm diameter x 1875 mm H)
M1801		1	VV	CRT, computer system, with keyboard
M4100		1	VV	Sphygmomanometer, wall hung
M4200		1	VV	Otoscope, wall hung
M4200		1	VV	Ophthalmoscope, wall hung
F3010 or F3025		1	VV	Bulletin board, 48" x 36" (1200 mm x 900 mm)
F2300		1	VV	Magazine/literature rack, wall mounted
F3200		1	VV	Clock, atomic, battery operated
A5106		1	VV	Sharps container, wall mounted
A5106		1	VV	Glove dispenser, wall mounted



Medication Room (MEDP1)

Floor Plan



80 NSF/ 7.4 NSM (Shown above)

Dermatology: 90 NSF/ 8.4 NSM

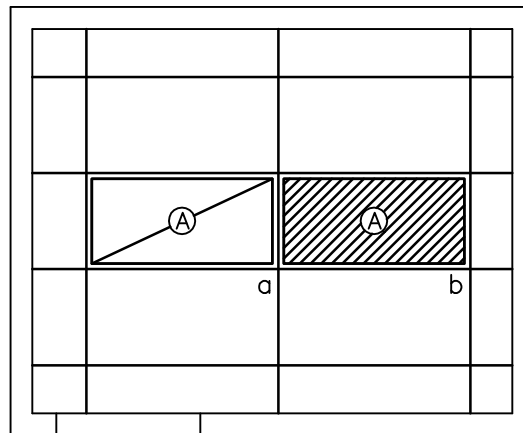
Methadone maintenance: 120 NSF/ 11.2 NSM

SCALE $\frac{1}{4}" = 1'-0"$



NOTE: Guide plates are graphical representations of selected room types, illustrating the integration of space, components, systems, and equipment. They provide typical configurations and general technical guidance, and are not intended to be project specific. Specific infrastructure design requirements are contained in VA Design Manuals and Space Planning Criteria located in the VA Technical Information Library.

Medication Room (MEDP1) Reflected Ceiling Plan



80 NSF/ 7.4 NSM (Shown above)

Dermatology: 90 NSF/ 8.4 NSM

Methadone maintenance: 120 NSF/ 11.2 NSM

SCALE $\frac{1}{4}" = 1'-0"$



NOTE: Guide plates are graphical representations of selected room types, illustrating the integration of space, components, systems, and equipment. They provide typical configurations and general technical guidance, and are not intended to be project specific. Specific infrastructure design requirements are contained in VA Design Manuals and Space Planning Criteria located in the VA Technical Information Library.

Medication Room (MEDP1)

Design Standards

ARCHITECTURAL

Ceiling:	AT
Ceiling Height:	9'-0" (2700 mm)
Wall Finish:	GWB-P
Wainscot:	--
Base:	RB
Floor Finish:	VCT
Slab Depression:	--
Sound Protection:	--
Notes:	--

SPECIAL EQUIPMENT

	--
--	----

LIGHTING

General:	--
Special:	--
Notes:	<ol style="list-style-type: none"> 2' x 4' (600 mm x 1200 mm) recessed fluorescent light fixture with acrylic prismatic lens w/ F32T8 lamps, 3500°K, CRI=70 (minimum). The foot-candle level is average maintained. Provide ballasts per fixture for desired switching configuration. To provide a uniform lighting level, switch inner lamp(s) on first switch and outer lamps on second switch. Exact quantity, location, and lamping of light fixtures shall be chosen to meet the foot-candle requirement. Fixture description for alternate 90 and 120 NSF rooms is the same as described in Note 1 above. Orient two fixtures in a similar manner to layout for 80 NSF room. Fixture wattage should remain the same as required for 80 NSF room.

POWER

General:	As Shown
Emergency:	As Shown
Notes:	--

COMMUNICATION/SPECIAL SYSTEMS

Data:	Yes
Telephone:	Yes
Intercom:	--
Nurse Call:	Yes
Public Address:	--
Radio/Entertainment:	--
MATV:	--
CCTV:	--
MID:	--
Security/Duress:	--
VTEL:	--
VA Satellite TV:	--
Notes:	--

HEATING, VENTILATING AND AIR CONDITIONING

Inside Design Conditions:	70°F (21°C) to 75°F (24°C) Dry-Bulb Temperature 30 Percent to 50 Percent Relative Humidity
Minimum Air Changes per Hour:	4
100% Exhaust:	No
100% Outside Air:	No
Room Air Balance:	Positive (+)
Dedicated Exhaust System:	No
Occupancy:	1
AC Load-(Equipment):	As Required
AC Load-(Light):	As Required
Notes:	--

PLUMBING AND MEDICAL GASES

Cold Water:	Yes
Hot Water:	Yes
Laboratory Air:	--
Laboratory Vacuum:	--
Sanitary Drain:	Yes
Reagent Grade Water:	--
Medical Air:	--
Medical Vacuum:	--
Oxygen:	--
Notes:	--



Medication Room (MEDP1)

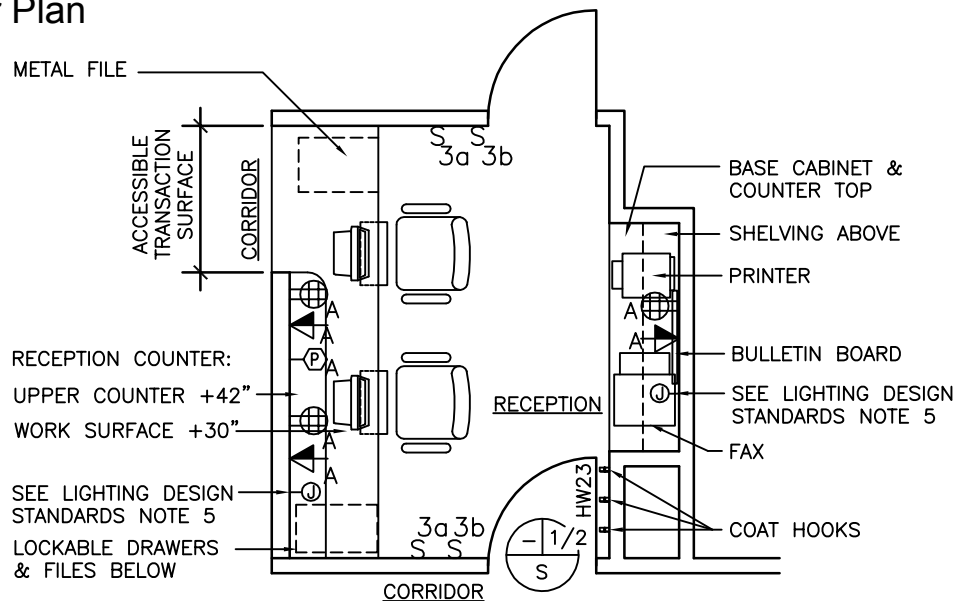
Equipment List

JSN	SYMBOL	QTY	AI	DESCRIPTION
C04P0		1	CC	Cabinet, sink base, 2-door, 60" x 24" x 36" (1520 mm x 600 mm x 900 mm) (PG-18-1, MCS 12 31 00)
D0370		1	CC	Cabinet, drawer base, 24" x 24" x 36" (600 mm x 600 mm x 900 mm) (PG-18-1, MCS 12 31 00)
		AR	CC	Receptacle, electrical, duplex and quadruplex (PG-18-1, MCS 26 27 26)
CE050		AR	CC	Cabinet, wall, 2 adjustable shelves, sloping top 24" W x 24" D x 30" H (600 mm W x 600 mm D x 750 mm H)
CT030		AR	CC	Countertop, SS (PG-18-1, MCS 12 36 00)
CS090	A-2	1	CC	Sink, CRS integral with top, with faucet, drain outlet and top (PG-18-1, MCS 12 36 00)
A1010		AR	CC	Outlet, telephone/data, wall mounted (PG-18-1, MCS 27 15 00)
		1	CC	Nurse call duty station (PG-18-1, MCS 27 52 23)
A5080		1	VV	Dispenser, paper towel, surface mounted
A5075		1	VV	Dispenser, soap, liquid, wall mounted
F2017		1	VV	Receptacle, waste, step on type, approx. 12" (300 mm) diameter
A5085		1	VV	Dispenser, paper cup, wall mounted
M3150		AR	VV	Automated storage/dispensing unit (cell) secure, approx. 27" W x 25" D x 78" H (675 mm W x 635 mm D x 1950 mm H)
A5106		1	VV	Sharps container
M7250		1	VV	Cart, medication, with PC computer system 36" x 30" x 36" (900 mm x 750 mm x 900 mm)



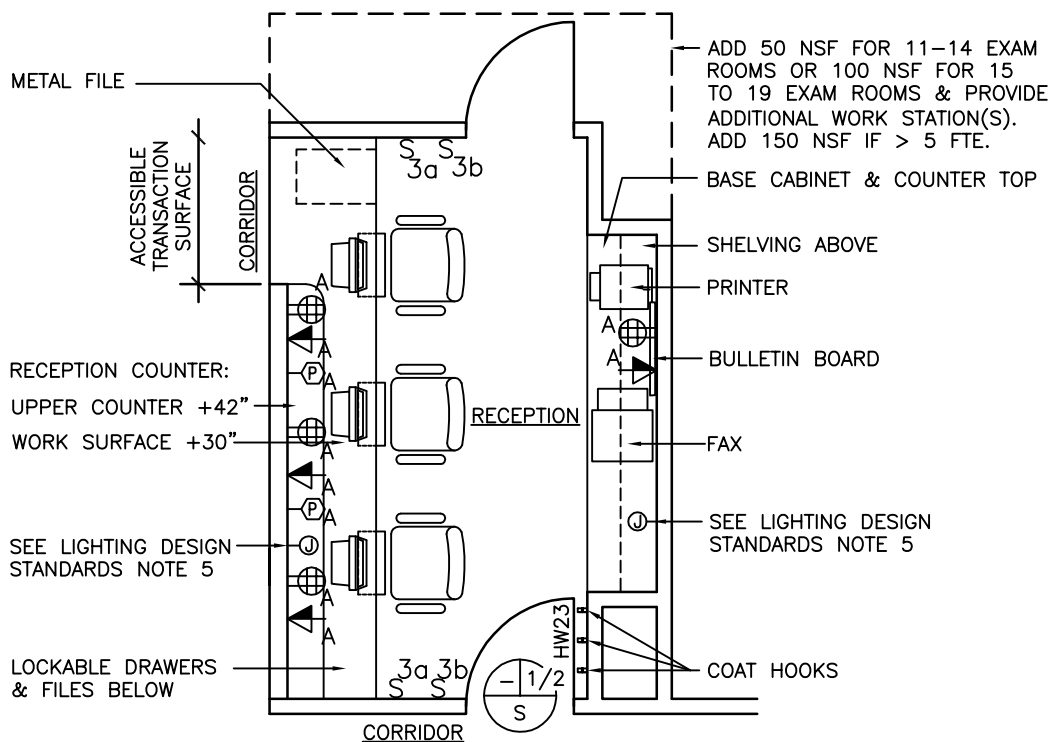
Reception (RECP1)

Floor Plan



Typical Reception: 120 NSF/ 11.2 NSM

Prosthetics similar: 60 NSF/ 5.6 NSM



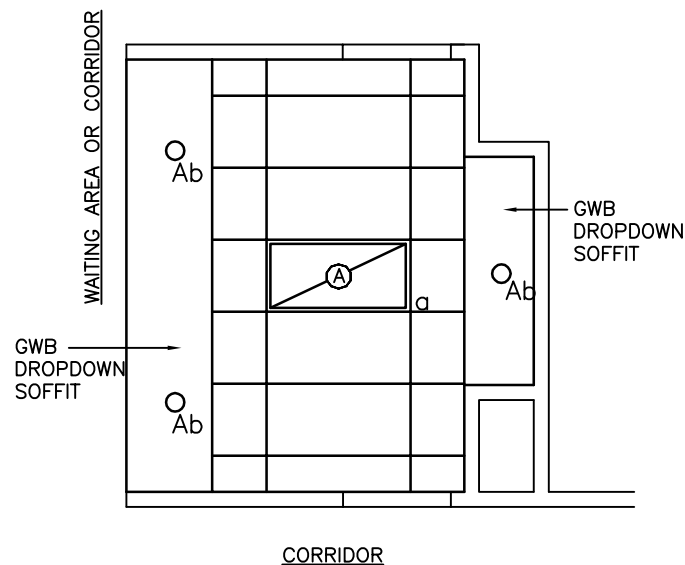
Clinical Reception (for up to 10 Exam Rooms): 150 NSF/13.9 NSM

SCALE $\frac{3}{16}" = 1'-0"$

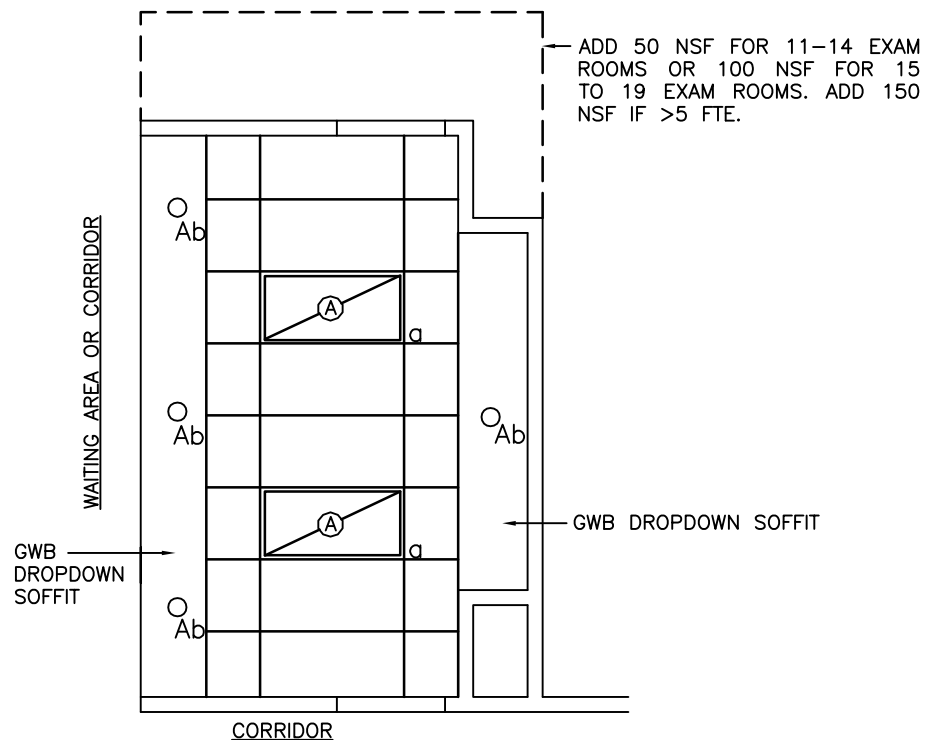


NOTE: Guide plates are graphical representations of selected room types, illustrating the integration of space, components, systems, and equipment. They provide typical configurations and general technical guidance, and are not intended to be project specific. Specific infrastructure design requirements are contained in VA Design Manuals and Space Planning Criteria located in the VA Technical Information Library.

Reception (RECP1) Reflected Ceiling Plan



Typical Reception: 120 NSF/ 11.2 NSM
Prosthetics similar: 60 NSF/ 5.6 NSM



Clinical Reception (for up to 10 Exam Rooms): 150 NSF/13.9 NSM

SCALE $\frac{3}{16}$ " = 1'-0"



NOTE: Guide plates are graphical representations of selected room types, illustrating the integration of space, components, systems, and equipment. They provide typical configurations and general technical guidance, and are not intended to be project specific. Specific infrastructure design requirements are contained in VA Design Manuals and Space Planning Criteria located in the VA Technical Information Library.

Reception (RECP1)

Design Standards

ARCHITECTURAL

Ceiling:	AT
Ceiling Height:	9'-0" (2700 mm)
Wall Finish:	--
Wainscot:	--
Base:	RB
Floor Finish:	VCT
Slab Depression:	--
Notes:	--

SPECIAL EQUIPMENT

	--
--	----

LIGHTING

General:	--
Special:	--
Emergency:	--

- Notes:
- 1) Recessed fluorescent fixture with compact fluorescent lamp.
 - 2) Recessed 2' x 4' (600 mm x 1200 mm) fluorescent fixture with F32T8 lamps, color temperature of 3500°K, CRI=70 (minimum).
 - 3) The foot-candle level is average maintained.
 - 4) Provide ballasts per fixture for desired switching configuration. To provide a uniform lighting level, switch inner lamps(s) on first switch and outer lamps on second switch.
 - 4) Exact quantity, location, and lamping of light fixtures shall be chosen to meet the foot-candle requirement.
 - 5) J-box below wall cabinet and empty raceway for counter task light (if required).

POWER

General:	As Shown
Special:	As Shown
Emergency:	As Shown
Notes:	--

COMMUNICATION/SPECIAL SYSTEMS

Data:	Yes
Telephone:	Yes
Intercom:	--
Nurse Call:	--
Public Address:	--
Radio/Entertainment:	--
MATV:	--
CCTV:	--
MID:	--
Security/Duress:	Yes
VTEL:	--
VA Satellite TV:	--
Notes:	--

HEATING, VENTILATING AND AIR CONDITIONING

Inside Design Conditions:	70°F (21°C) to 75°F (24°C) Dry-Bulb Temperature 30 Percent to 50 Percent Relative Humidity
Minimum Air Changes per Hour:	6
100% Exhaust:	No
100% Outside Air:	No
Room Air Balance:	Neutral (0)
Dedicated Exhaust System:	No
Occupancy:	2
AC Load-(Equipment):	As Required
AC Load-(Light):	As Required
Notes:	--

PLUMBING AND MEDICAL GASES

Cold Water:	--
Hot Water:	--
Laboratory Air:	--
Laboratory Vacuum:	--
Sanitary Drain:	--
Reagent Grade Water:	--
Medical Air:	--
Medical Vacuum:	--
Oxygen:	--
Notes:	--



Reception (RECP1)

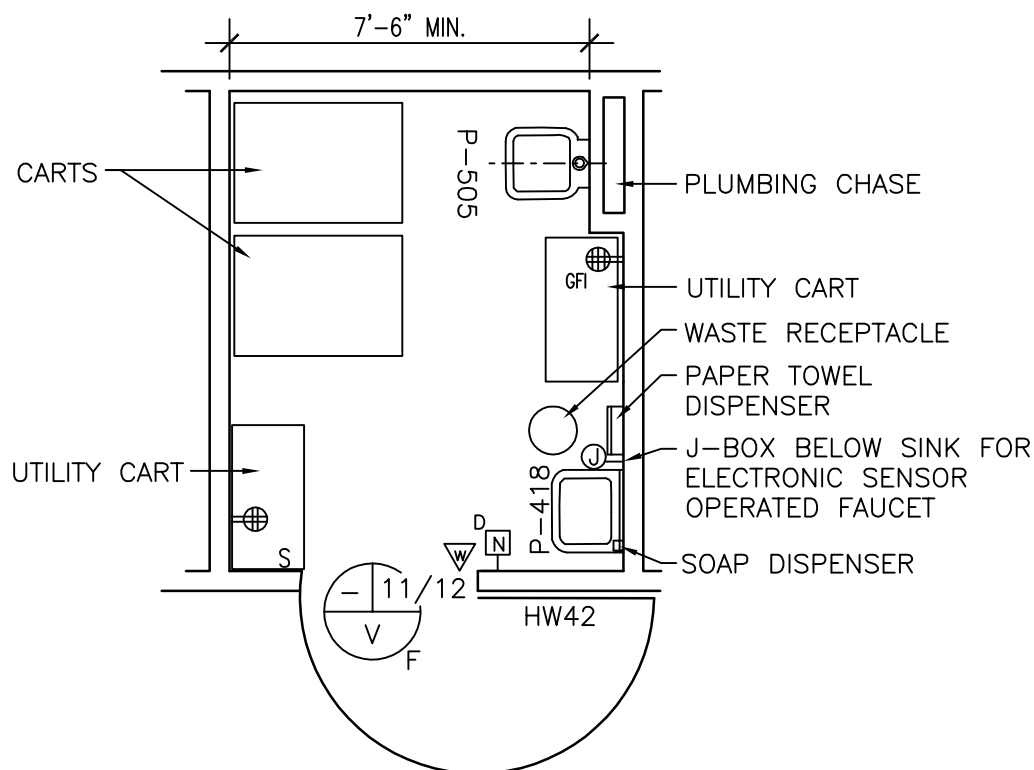
Equipment List

JSN	SYMBOL	QTY	AI	DESCRIPTION
		AR	CC	Receptacle, electrical, quadruplex, for computer equipment items (PG-18-1, MCS 26 27 26)
		AR	CC	Shelving, wall hung, standard and bracket type, 2 adjustable shelves, 12" D x length as required (300 mm D x length as required (PG-18-1, MCS 12 36 00)
A1010		AR	CC	Outlet, telephone/data (PG-18-1, MCS 27 15 00)
F3010 or F3025		AR	CC	Bulletin board
CT030		AR	CC	Reception counter, custom casework (PG-18-1, MCS 06 20 00)
A6105		AR	CC	Base cabinets, counter top, and open wall shelving (work surface) (PG-18-1, MCS 12 32 00 and 12 36 00)
		AR	CC	Alarm button, security/duress (PG-18-1, MCS 27 52 31)
M1801		AR	VV	CRT, computer system, with keyboard
F0410		AR	VV	Metal file, under counter
M1840		1	VV	Printer, computer system
F0280		AR	VV	Chair, rotary, with arms
M1840		1	VV	Machine, facsimile
A5145		3	VV	Hook, coat, wall mounted



Soiled Utility Room (USCL1)

Floor Plan



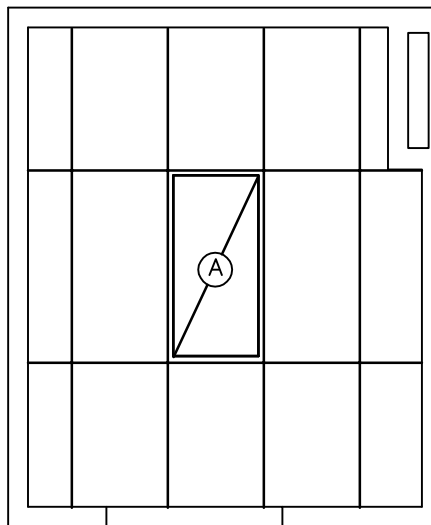
Typical (min.): 80 NSF/ 7.4 NSM (Shown above)
Ambulatory Surgery: 100 NSF/ 9.3 NSM

SCALE $\frac{1}{4}" = 1'-0"$



NOTE: Guide plates are graphical representations of selected room types, illustrating the integration of space, components, systems, and equipment. They provide typical configurations and general technical guidance, and are not intended to be project specific. Specific infrastructure design requirements are contained in VA Design Manuals and Space Planning Criteria located in the VA Technical Information Library.

Soiled Utility Room (USCL1) Reflected Ceiling Plan



Typical (min.): 80 NSF/ 7.4 NSM (Shown above)
Ambulatory Surgery: 100 NSF/ 9.3 NSM

SCALE $\frac{1}{4}" = 1'-0"$



NOTE: Guide plates are graphical representations of selected room types, illustrating the integration of space, components, systems, and equipment. They provide typical configurations and general technical guidance, and are not intended to be project specific. Specific infrastructure design requirements are contained in VA Design Manuals and Space Planning Criteria located in the VA Technical Information Library.

Soiled Utility Room (USCL1)

Design Standards

ARCHITECTURAL

Ceiling:	AT (SP)
Ceiling Height:	9'-0" (2700 mm)
Wall Finish:	GWB (SC)
Wainscot:	--
Base:	RSF
Floor Finish:	RSF
Slab Depression:	--
Sound Protection:	--
Notes:	--

SPECIAL EQUIPMENT

	--
--	----

LIGHTING

General:	--
Special:	--
Notes:	<ol style="list-style-type: none"> 1) Recessed 2' x 4' (600 mm x 1200 mm) fluorescent fixture with acrylic prismatic lens, w/ F32T8 lamps, 3500°K, CRI=70 (minimum). 2) The foot-candle level is average maintained. 3) Provide ballasts per fixture for desired switching configuration. To provide a uniform lighting level, switch inner lamp(s) on first switch and outer lamps on second switch. 4) Exact quantity, location, and lamping of light fixtures shall be chosen to meet the foot-candle requirement. 5) Fixture description for alternate 100 NSF room is the same as described in Note 1 above. Orient single fixture for 100 NSF in the same manner as shown for 80 NSF room. Fixture wattage should be the same for both room sizes.

POWER

General:	As Shown
Emergency:	As Shown
Notes:	--

COMMUNICATION/SPECIAL SYSTEMS

Data:	--
Telephone:	Yes
Intercom:	--
Nurse Call:	Yes
Public Address:	--
Radio/Entertainment:	--
MATV:	--
CCTV:	--
MID:	--
Security/Duress:	--
VTEL:	--
VA Satellite TV:	--
Notes:	--

HEATING, VENTILATING AND AIR CONDITIONING

Inside Design Conditions:	Not Required
Minimum Air Changes per Hour:	10 (All Make-Up Air)
100% Exhaust:	Yes
100% Outside Air:	No
Room Air Balance:	Double Negative (--)
Dedicated Exhaust System:	No
Occupancy:	None
AC Load-(Equipment):	None
AC Load-(Light):	As Required
Notes:	<ol style="list-style-type: none"> 1) Admit make-up air through the door undercut and transfer grille (if required) from the adjoining areas.

PLUMBING AND MEDICAL GASES

Cold Water:	Yes
Hot Water:	Yes
Laboratory Air:	--
Laboratory Vacuum:	--
Sanitary Drain:	Yes
Reagent Grade Water:	--
Medical Air:	--
Medical Vacuum:	--
Oxygen:	--
Notes:	--



Soiled Utility Room (USCL1)

Equipment List

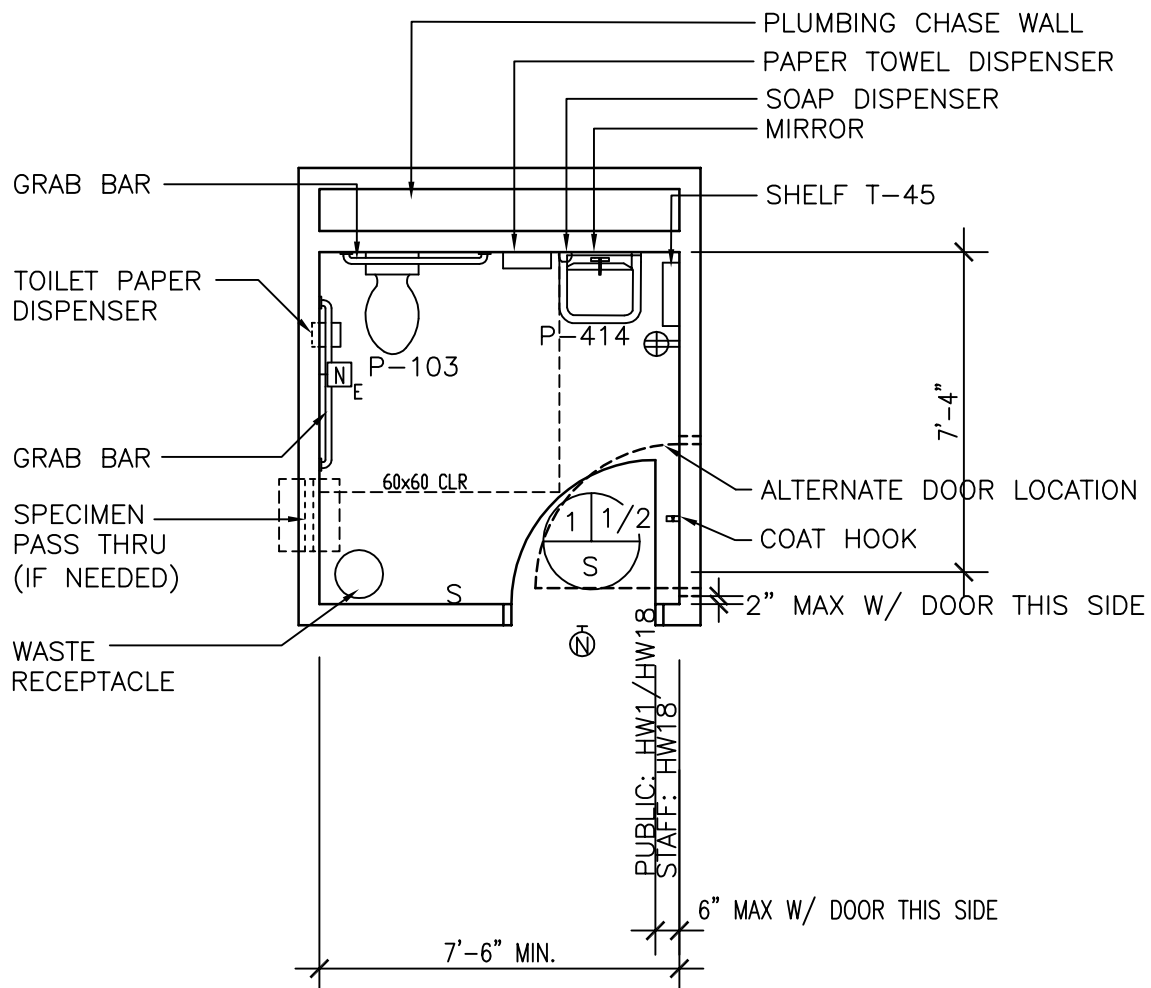
JSN	SYMBOL	QTY	AI	DESCRIPTION
P3100	P-418	1	CC	Lavatory, sensor control (PG-18-1, MCS 22 40 00)
P6500	P-505	1	CC	Sink, service, clinic, flushing rim, wall hung (PG-18-1, MCS 22 40 00)
		AR	CC	Receptacle, electrical, quadruplex, 120 volt (PG-18-1, MCS 26 27 26)
		1	CC	Nurse call duty station, wall mounted (PG-18-1, MCS 27 52 23)
		1	CC	Outlet, telephone, wall mounted (PG-18-1, MCS 27 15 00)
F0535		2	VV	Cart, utility, corrosion resisting steel, 36" x 18" x 30" (900 mm x 450 mm x 750 mm)
F2000		1	VV	Receptacle, waste, 13" (325 mm) diameter
A5075		1	VV	Dispenser, soap, liquid, wall mounted
A5080		1	VV	Dispenser, paper towel, surface mounted
F0510		AR	VV	Carts, soiled, linen



Toilet, Wheelchair Accessible (TLTU1)

Floor Plan

NOTE: DO NOT OVERLAP DOOR SWING WITH ADA/ ABA CLEARANCE AT WATER CLOSET.



55 NSF/ 3.7 NSM

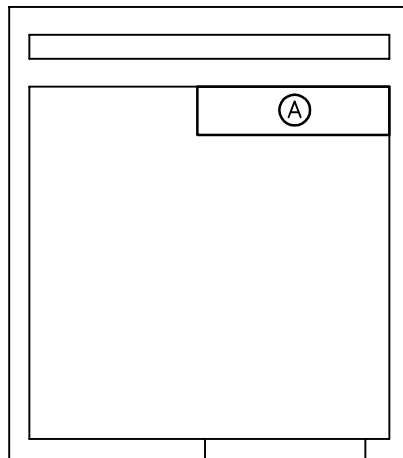
SCALE $\frac{1}{4}" = 1'-0"$



NOTE: Guide plates are graphical representations of selected room types, illustrating the integration of space, components, systems, and equipment. They provide typical configurations and general technical guidance, and are not intended to be project specific. Specific infrastructure design requirements are contained in VA Design Manuals and Space Planning Criteria located in the VA Technical Information Library.

Toilet, Wheelchair Accessible (TLTU1)

Reflected Ceiling Plan



55 NSF/ 3.7 NSM

SCALE $\frac{1}{4}" = 1'-0"$



NOTE: Guide plates are graphical representations of selected room types, illustrating the integration of space, components, systems, and equipment. They provide typical configurations and general technical guidance, and are not intended to be project specific. Specific infrastructure design requirements are contained in VA Design Manuals and Space Planning Criteria located in the VA Technical Information Library.

Toilet, Wheelchair Accessible (TLTU1)

Design Standards

ARCHITECTURAL

Ceiling:	AT
Ceiling Height:	9'-0" (2700 mm)
Wall Finish:	GWB-P
Wainscot:	48" (1200 mm) min., CT
Base:	CT
Floor Finish:	CT
Slab Depression:	--
Sound Protection:	STC 40
Notes:	--

SPECIAL EQUIPMENT**LIGHTING**

General:	--
Special:	--
Notes:	<ol style="list-style-type: none"> 1) Wall mounted fluorescent fixture above mirror. Fixture shall have T8 lamps, 3500°K, CRI=70 (minimum). 2) The foot-candle level is average maintained. 3) Provide ballasts per fixture for desired switching configuration. To provide a uniform lighting level, switch inner lamp(s) on first switch and outer lamps on second switch. 4) Exact quantity, location, and lamping of light fixtures shall be chosen to meet the foot-candle requirement. 5) Fluorescent nurse call light.

POWER

General:	As Shown
Emergency:	As Shown
Notes:	--

COMMUNICATION/SPECIAL SYSTEMS

Data:	--
Telephone:	--
Intercom:	--
Nurse Call:	Yes
Public Address:	--
Radio/Entertainment:	--
MATV:	--
CCTV:	--
MID:	--
Security/Duress:	--
VTEL:	--
VA Satellite TV:	--
Notes:	--

HEATING, VENTILATING AND AIR CONDITIONING

Inside Design Conditions:	
	(Interior) Conditioned by make-up air
	(Perimeter) Heating 68°F (20°C)
	Provide radiant ceiling panels
Minimum Air Changes per Hour:	Highest of:
	10 air changes per hour, or
	50 CFM (24 liters/sec).
	Room air balance
100% Exhaust:	Yes
100% Outside Air:	No
Room Air Balance:	Double Negative (--)
Dedicated Exhaust System:	No
Occupancy:	Transient
AC Load-(Equipment):	None
AC Load-(Light):	As Required
Notes:	1) Individual Room Temperature
Control:	
	(Interior) Not Required
	(Perimeter) Required for Heating
	Mode

PLUMBING AND MEDICAL GASES

Cold Water:	Yes
Hot Water:	Yes
Laboratory Air:	--
Laboratory Vacuum:	--
Sanitary Drain:	Yes
Reagent Grade Water:	--
Medical Air:	--
Medical Vacuum:	--
Oxygen:	--
Notes:	--



Toilet, Wheelchair Accessible (TLTU1)
Equipment List

JSN	SYMBOL	QTY	AI	DESCRIPTION
P9150	P-103	1	CC	Water closet, wall hung (PG-18-1, MCS 22 40 00)
A5200		1	CC	Dispenser, toilet tissue, double roll (PG-18-1, MCS 10 28 00; PG-18-4, NCS SD 10 21 13-1)
A5109		AR	CC	Bar, grab for water closet (PG-18-1, MCS 10 28 00; PG-18-4, NCS SD 10 21 13-1)
P3100	P-414	1	CC	Lavatory, straight back (PG-18-1, MCS 22 40 00)
A1066		1	CC	Mirror, 24" x 36" (600 mm x 900 mm) over wheelchair lavatory (PG-18-1, MCS 10 28 00; PG-18-4, NCS SD 10 28 00-3)
A5162	T-45	1	CC	Shelf, stainless steel, wall hung, 6" x 18" (150 mm x 450 mm) (PG-18-1, MCS 10 28 00)
		1	CC	Light, over mirror (PG-18-1, MCS 26 51 00)
		AR	CC	Receptacle, electrical, duplex, with ground fault interrupter (PG-18-1, MCS 26 27 26)
		1	CC	Nurse call, emergency station, with corridor signal light, provide pull cord by water closet (PG-18-1, MCS 27 52 23). Omit in staff toilet.
A5145		1	VV	Hook, coat, wall mounted
A5075		1	VV	Dispenser, soap, liquid, wall mounted
A5080		1	VV	Dispenser, paper towel, surface mounted
F2017		1	VV	Receptacle, waste, step on type, approx. 12" (300 mm) diameter
				Note: Provide following only when clinic has a laboratory.
		1	CC	Specimen pass-thru, to general lab (PG-18-1, MCS 10 28 00)

