

SCALE: 1 1/2" = 1'



VA FORM 08-6231

three inches = one foot
one and one half inches = one foot
one inch = one foot
three quarters inch = one foot
one half inch = one foot
three eighths inch = one foot
one quarter inch = one foot
one eighth inch = one foot

NOTE:
PLAN DIMENSIONS ARE CONCEPTUAL. CONTRACTOR IS RESPONSIBLE FOR OBTAINING AND RECORDING EXISTING DIMENSIONS TO THE EXTENT NECESSARY TO REPLACE SALVAGED MATERIALS TO THEIR ORIGINAL POSITION. CONSTRUCT NEW CONCRETE FOUNDATIONS TO SUPPORT SALVAGED MATERIALS. ADJUST DIMENSIONS OF NEW CONCRETE FOUNDATIONS AS NECESSARY.

2
S2.6
OVERALL SECTION
SCALE: 1/2" = 1' 0"

4
S2.6
SECTION
SCALE: 1 1/2" = 1' 0"

3
S2.6
SECTION
SCALE: 1 1/2" = 1' 0"

1
S2.6
OVERALL SECTION
SCALE: 1/2" = 1' 0"

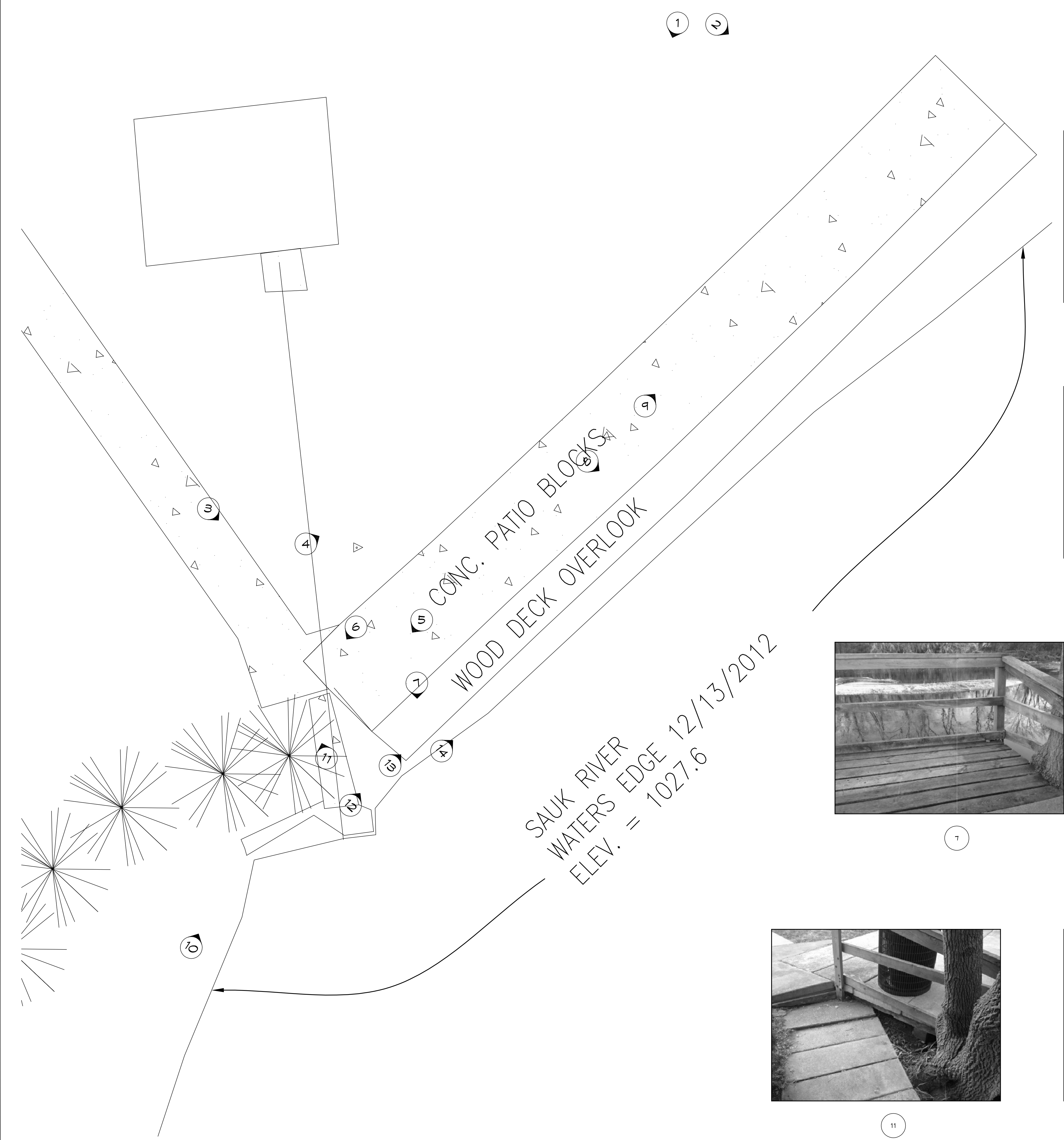
NO.	REVISION	DATE

Alexandria
525 Broadway Street
Alexandria, MN 56308
phone 320.759.9030
facsimile 320.759.9062
www.jlgarchitects.com
copyright © 2012

100% CONSTRUCTION DOCUMENTS - FOR CONSTRUCTION

DATE: 02.01.2013 PROJECT NAME: AS NOTED PROJECT NO.: 656-13-233	DATE: 02-01-2013 REG. NO.: BRYAN L. ASCHKE, PE
DRAWING TITLE: SECTIONS - BRIDGE ABUTMENT	PROJECT TITLE: REPAIR ABANDONED BRIDGE ABUTMENT
BUILDING NO.: DRAWN: TJP CHECKED BY: RWM	CAD FILE: 11050N
LOCATION: V.A. MEDICAL CENTER ST. CLOUD, MN 56302	DRAWING NO.: 18 OF 24 S2.6

three inches = one foot
one and one half inches = one foot
one inch = one foot
three quarters inch = one foot
one half inch = one foot
three eighths inch = one foot
one quarter inch = one foot
one eighth inch = one foot



1



2



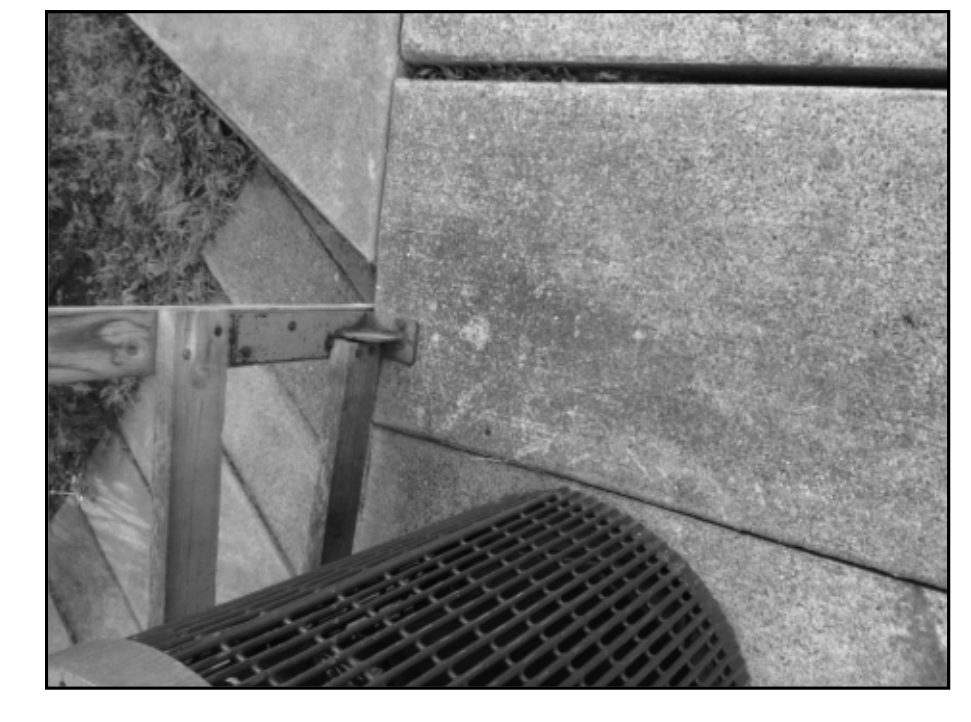
3



4



5



6



7



8



9



10



11



12



13

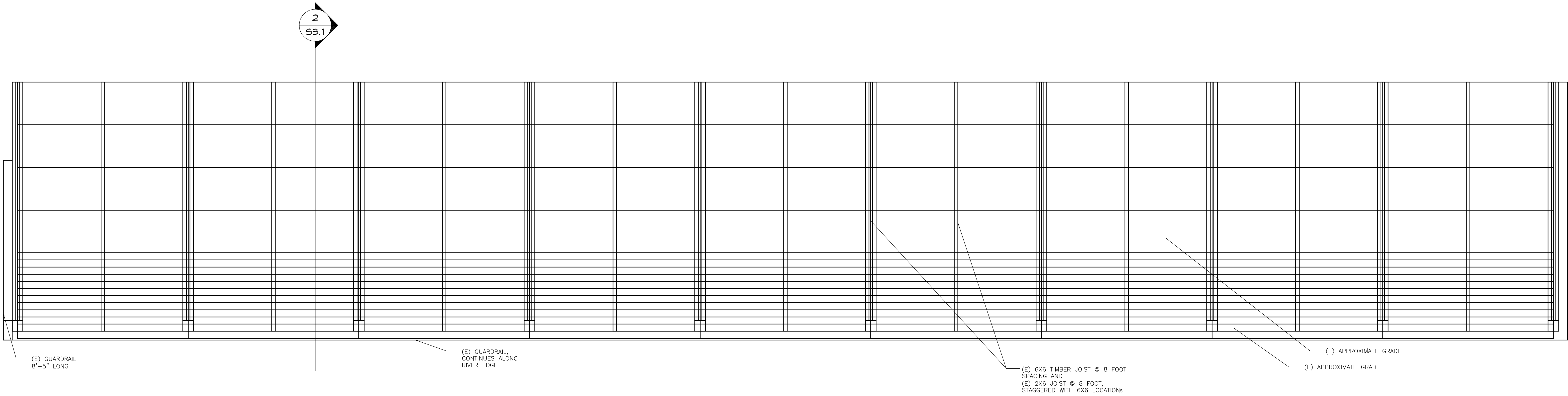


14

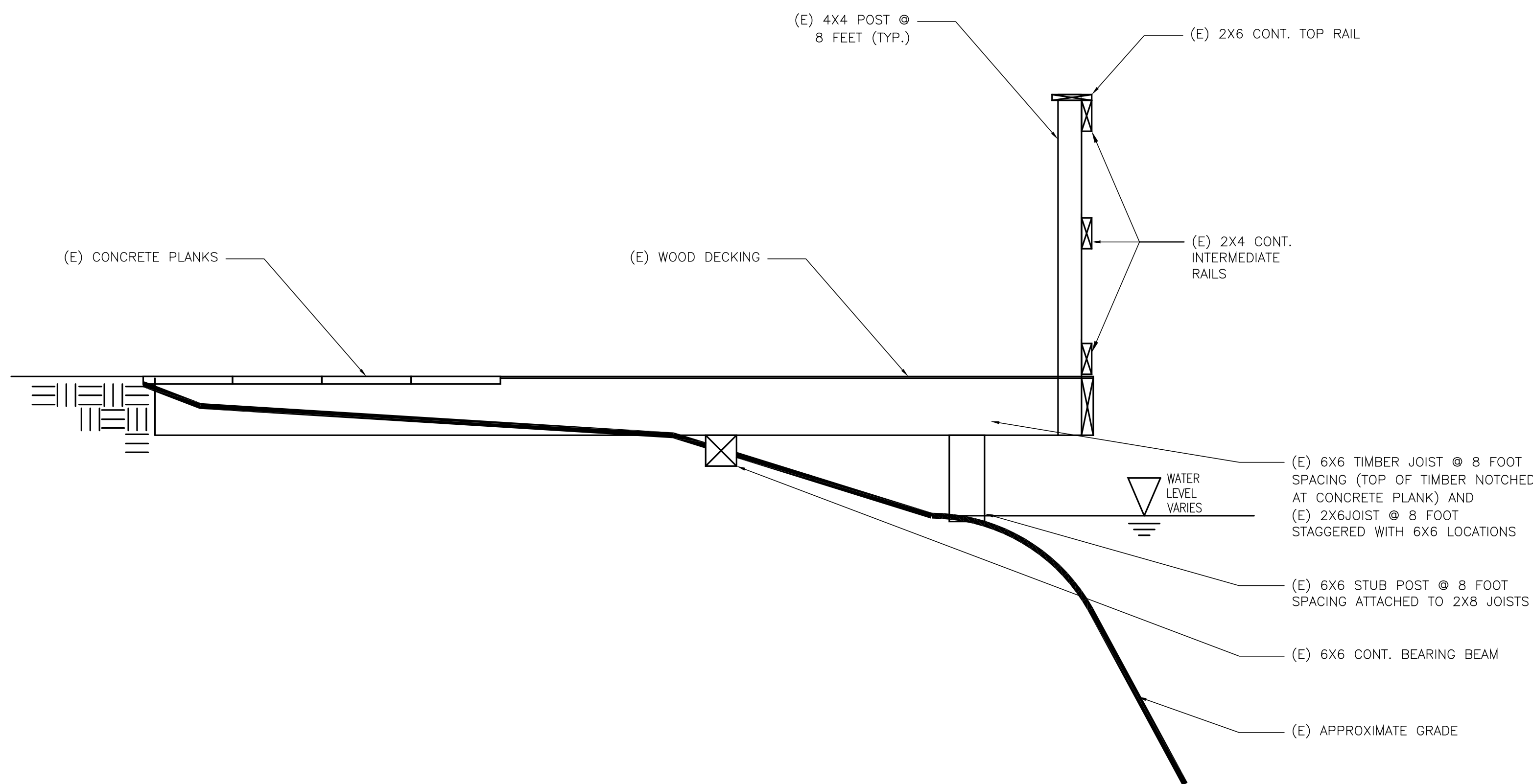
100% CONSTRUCTION DOCUMENTS - FOR CONSTRUCTION

No. REVISION DATE		JLG architects		Alexandria 525 Broadway Street Alexandria, MN 56308 phone 320.759.9030 facsimile 320.759.9062 www.jlgarchitects.com copyright © 2012		I HEREBY CERTIFY THAT THIS PLAN, SPECIFICATION, OR REPORT WAS PREPARED BY ME OR UNDER MY DIRECT SUPERVISION AND THAT I AM A duly LICENSED ENGINEER UNDER THE LAWS OF THE STATE OF MINNESOTA BRYAN L. ASHCHE, P.E. DATE: 02-01-2013 RES. NO.		DRAWING TITLE EXISTING CONDITIONS - FISHING PIER		PROJECT TITLE REPAIR ABANDONED BRIDGE ABUTMENT		DATE 02-01-2013 PROJECT NO. 656-13-233 BUILDING NO. CHECKED BY RWM DRAWN TJP CADD FILE 11050N DRAWING NO. S3.0 19 OF 24		VAMC SAINT CLOUD MN	
-------------------	--	----------------	--	--	--	--	--	---	--	---	--	--	--	---------------------	--

three inches = one foot
one and one half inches = one foot
one inch = one foot
three quarters inch = one foot
one half inch = one foot
three eighths inch = one foot
one quarter inch = one foot
one eighth inch = one foot



1
S3.1
PLAN VIEW
SCALE: 1/2" = 1' 0"



2
S3.1
SECTION
SCALE: 3/4" = 1' 0"

- DEMOLITION NOTES:
1. ALL ITEMS IDENTIFIED TO BE REMOVED SHALL BE DISPOSED OF OFF SITE.
 2. REMOVE ALL (E) WOOD GUARDRAIL
 3. REMOVE ALL (E) CONCRETE PLANKS
 4. REMOVE ALL (E) WOOD DECKING
 5. REMOVE ALL (E) WOOD SUB-STRUCTURE (JOISTS, STUB POSTS, BEARING BEAMS)
 6. REMOVE (E) TREES AND LANDSCAPING AS IDENTIFIED ON SITE PLAN
 7. REMOVE SOIL TO LIMITS OF NEW CONSTRUCTION
 8. REMOVE DEBRIS (BRANCHES, TRASH, EXISTING CMU) ALONG SHORELINE AND EMBANKMENT.

100% CONSTRUCTION DOCUMENTS - FOR CONSTRUCTION

<div>NO</div> <div>REVISION</div> <div>DATE</div>			<div>JLG architects</div> <div>Alexandria 525 Broadway Street Alexandria, MN 56308 phone 320.759.9030 facsimile 320.759.9062 www.jlgarchitects.com copyright © 2012</div>			<div>STAMPED I HEREBY CERTIFY THAT THIS PLAN, SPECIFICATION, OR REPORT WAS PREPARED BY ME OR UNDER MY DIRECT SUPERVISION AND THAT I AM A DULY LICENSED ENGINEER UNDER THE LAWS OF THE STATE OF MINNESOTA BRYAN L. ASCHÉ, PE DATE: 03-01-2013 MPL 402888 REG. NO.</div>			<div>DRAWING TITLE DEMOLITION PLAN - FISHING PIER</div>			<div>PROJECT TITLE REPAIR ABANDONED BRIDGE ABUTMENT</div>			<div>DATE 02.01.2013 PROJECT NO. 656-13-233 CADD FILE 11050N DRAWING NO. S3.1 SHEET 20 OF 24</div>			<div> VAMC SAINT CLOUD MN</div>		
---	--	--	--	--	--	---	--	--	--	--	--	---	--	--	--	--	--	-------------------------------------	--	--