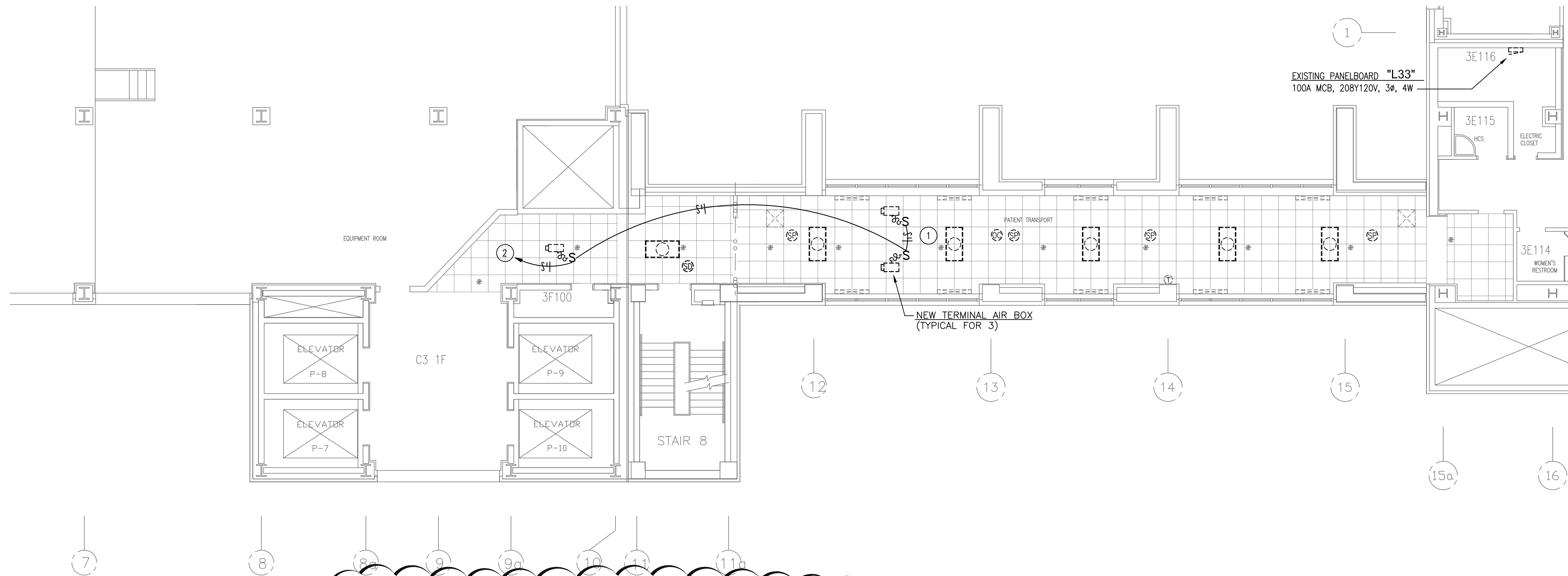


1 LEVEL 3, AREA E: ELECTRICAL DEMOLITION

SCALE: 1/8" = 1'-0"

KEYED DEMOLITION NOTES:

- 1 THE ELECTRICAL CONTRACTOR SHALL TAKE DOWN AND PUT BACK ALL CEILING MOUNTED LIGHT FIXTURES, SPEAKERS, FIRE ALARM DEVICES, AND ANY OTHER ELECTRICAL-RELATED CEILING MOUNTED DEVICE OR EQUIPMENT AS REQUIRED TO ACCOMMODATE HVAC RENOVATION WORK. DISCONNECT, REMOVE, AND STORE ALL MATERIAL IN A SAFE PLACE AS DESIGNATED BY THE VA. UPON COMPLETION OF HVAC RENOVATION WORK, REINSTALL AND RECONNECT FIXTURES AND DEVICES AS BEFORE AND ASSURE PROPER OPERATION. ALL DISCONNECTED LINE VOLTAGE POWER CONDUCTORS SHALL BE PROPERLY INSULATED AND MADE SAFE. WHERE A FIRE ALARM DEVICE HAS TO BE TEMPORARILY REMOVED FROM THE CEILING TILE, CAREFULLY SUSPEND THE DEVICE FROM THE STRUCTURE ABOVE, IN A MANNER IN WHICH IT, AND ASSOCIATED CIRCUITRY, WILL NOT BE DAMAGED DURING HVAC RENOVATION WORK. IF IT IS NECESSARY TO COMPLETELY DISCONNECT AND REMOVE ANY FIRE ALARM DEVICE, THE ASSOCIATED FIRE ALARM CIRCUITRY MUST BE TEMPORARILY RECONNECTED IN SUCH A WAY AS TO MAINTAIN CIRCUIT CONTINUITY AND FUNCTIONALITY OF OTHER EXISTING FIRE ALARM DEVICES ON THAT CIRCUIT. IT SHALL BE THE RESPONSIBILITY OF THE ELECTRICAL CONTRACTOR TO REPAIR OR REPLACE TO THE VA'S SATISFACTION ANY FIXTURES OR DEVICES THAT BECOME DAMAGED DURING AND AS A RESULT OF THIS PROCESS.



2 LEVEL 3, AREA E: ELECTRICAL RENOVATION

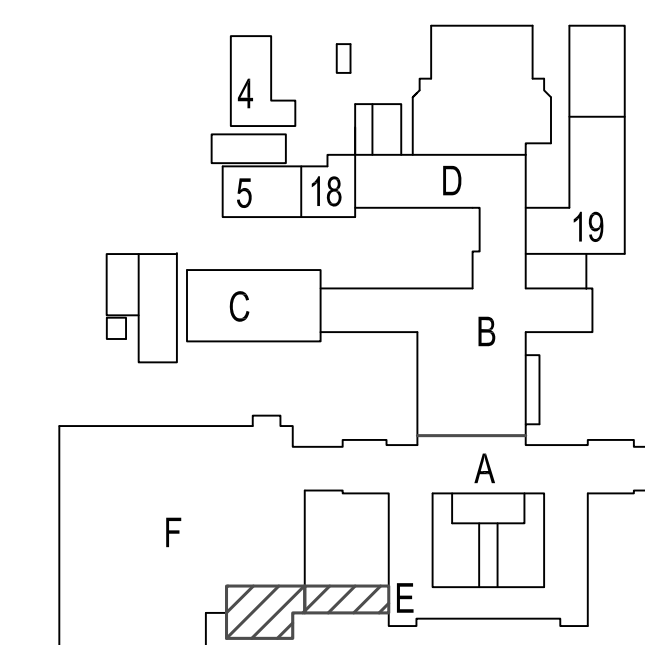
SCALE: 1/8" = 1'-0"

KEYED RENOVATION NOTES:

- 1 THE ELECTRICAL CONTRACTOR SHALL TAKE DOWN AND PUT BACK ALL CEILING MOUNTED LIGHT FIXTURES, SPEAKERS, FIRE ALARM DEVICES, AND ANY OTHER ELECTRICAL-RELATED CEILING MOUNTED DEVICE OR EQUIPMENT AS REQUIRED TO ACCOMMODATE HVAC RENOVATION WORK. UPON COMPLETION OF HVAC RENOVATION WORK, REINSTALL AND RECONNECT FIXTURES AND DEVICES AS BEFORE AND ASSURE PROPER OPERATION. IT SHALL BE THE RESPONSIBILITY OF THE ELECTRICAL CONTRACTOR TO REPAIR OR REPLACE TO THE VA'S SATISFACTION ANY FIXTURES OR DEVICES THAT BECOME DAMAGED DURING AND AS A RESULT OF THIS PROCESS.
- 2 HOMERUN TO NEAREST 120/208V PANELBOARD AND CONNECT TO SPARE 20A/1P CIRCUIT BREAKER. IF NO SUCH SPARE BREAKER EXISTS, FURNISH AND INSTALL A NEW 20A/1P CIRCUIT BREAKER IN AVAILABLE SPACE. NEW CIRCUIT BREAKER SHALL BE OF THE SAME MANUFACTURER AS THE PANELBOARD IT IS BEING INSTALLED IN AND SHALL BE THE SAME TYPE AND HAVE THE SAME INTERRUPTING RATING AS EXISTING CIRCUIT BREAKERS ALREADY INSTALLED IN THIS PANELBOARD.

REVISIONS:	
1	3-28-2013

- GENERAL NOTES:
1. EXISTING CONDITIONS SHOWN WERE DERIVED FROM OWNER FURNISHED DRAWINGS AND FIELD OBSERVATIONS. FIELD VERIFY LOCATION, SIZE, ROUTING AND QUANTITY OF ALL EQUIPMENT, PIPING, CONDUIT AND SYSTEMS.
 2. SOME EXISTING SYSTEMS AND EQUIPMENT ARE NOT SHOWN FOR CLARITY. FIELD VERIFY EXISTING CONDITIONS.
 3. REUSE EXISTING HANGERS AS APPLICABLE. REPAIR/REPLACE/PROVIDE NEW HANGERS AS REQUIRED. REMOVE HANGERS NOT UTILIZED DURING CONSTRUCTION.
 4. FIELD VERIFY LOCATION AND ROUTING OF ALL MEDICAL GAS PIPING AND EQUIPMENT. WORK ON THESE SYSTEMS IS NOT INCLUDED IN THE SCOPE OF WORK.



KEY PLAN

NO SCALE

RMD
CONSULTING, LLC.
RMD.CORP. # 12-3702A © 2013
OKLAHOMA REGISTERED ENGINEERING FIRM: 5183

2015 VALLEY VIEW, SUITE 214
DALLAS, TEXAS 75234
P: 972-488-8077 F: 972-488-8174

Drawing Title LEVEL 3, AREA E: ELECTRICAL DEMOLITION & RENOVATION		Project Title CORRECT HVAC DEFICIENCIES IN 5B100 AND BREEZEWAYS		Date MARCH 5, 2013
Approved: Division Chief		Building Number 1		Project No. 635-12-313
Approved: Service Director		Checked 		DRAWING NO. 1-E1.00
		Location VA MEDICAL CENTER OKLAHOMA CITY, OKLAHOMA		Dwg. 8 of 12

DEPARTMENT of
VETERANS AFFAIRS