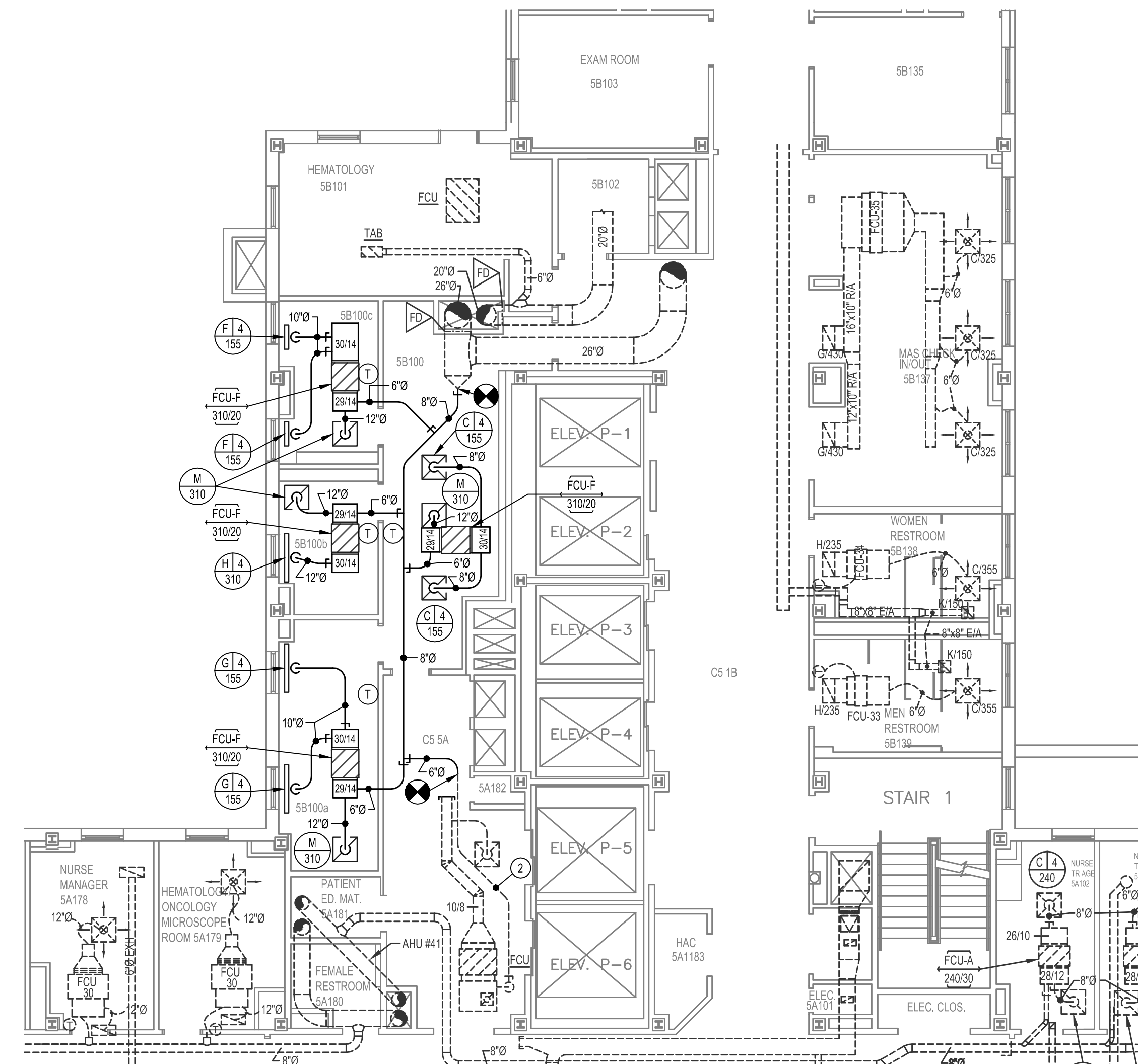


1 LEVEL 5, AREA B: HVAC DEMO PLAN
1/8"=1'-0"

KEYED NOTES: HVAC DEMO PLAN

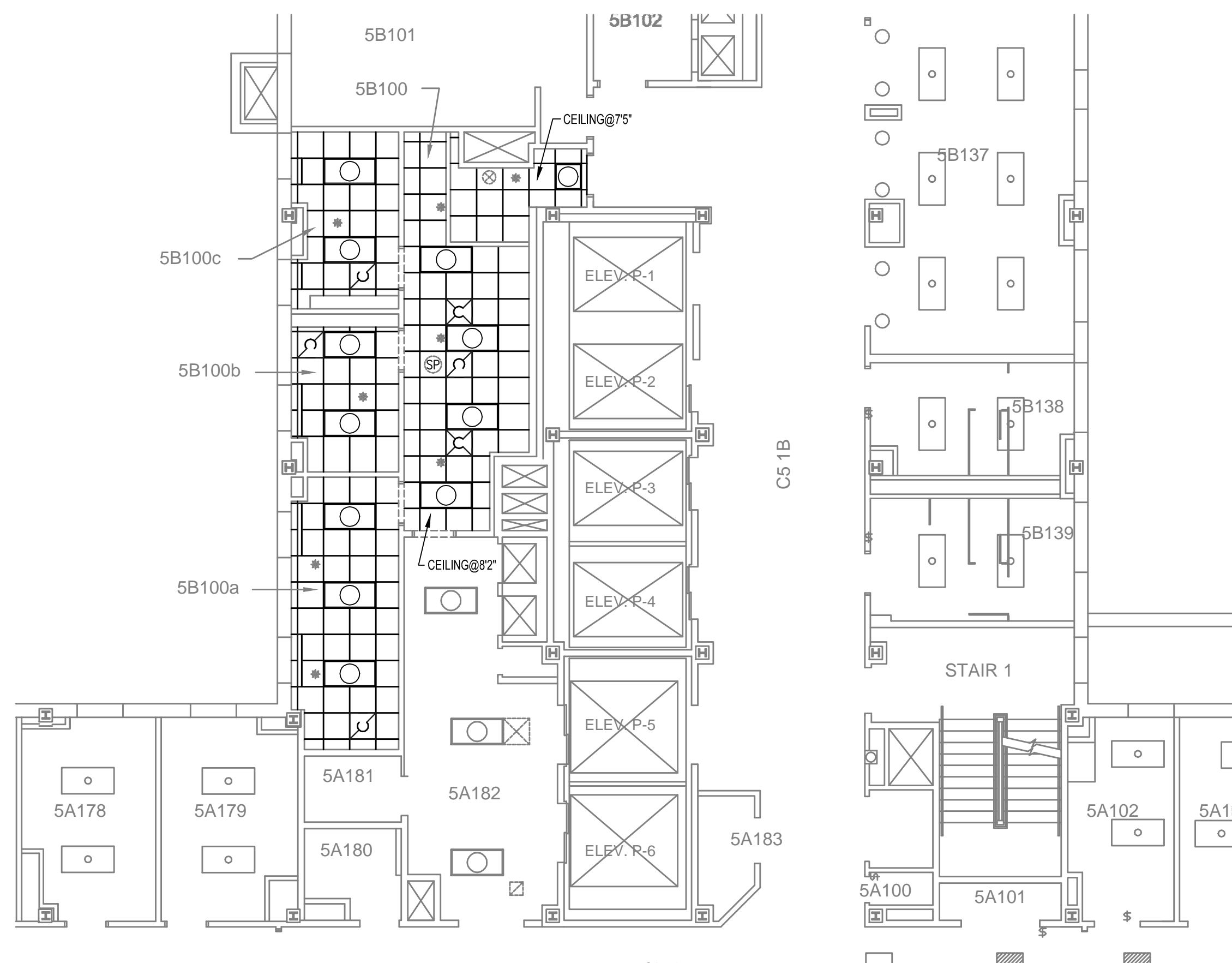
- REMOVE FDU, COMPLETE. REMOVE ALL SUPPLY AIR AND RETURN AIR DUCTWORK, COMPLETE. REMOVE ALL DIFFUSERS AND GRILLES.
- DISCONNECT FDU ON DUCT, REMOVE FDU ON DUCT AS INDICATED. REWORK CONNECTION AT TAP FOR NEW ON DUCTWORK CONNECTION.
- REWORK/RECONNECT FDU ON DUCT SERVING EXISTING FDU IN CORRIDOR. REFER TO HVAC PLANS.
- REMOVE ALL TEMPERATURE CONTROLS IN SPACE, COMPLETE. REMOVE CONTROL WIRING BACK TO UNIT AND/OR CONTROL PANEL. REMOVE ANY CONDUIT ABOVE GLGS. THAT IS NOT REUSED TO SERVE NEW FAN COIL UNIT, COMPLETE.
- REMOVE RECESSED LAY-IN CLG (FURR-DOWNS TO REMAIN) AND GRID IN ROOM. FIELD VERIFY ALL EQUIPMENT/DEVICES IN CLG TO REMAIN. SUPPORT EQUIPMENT/DEVICES FROM STRUCTURE AND REINSTALL IN NEW CEILING. INSTALL NEW CLG. TILES AND GRID. REFER TO REFLECTED CEILING PLAN FOR DETAILS.
- LAY-IN CLG IN CORRIDOR TO REMAIN. REMOVE/REPLACE TILES AND GRID AS REQ'D TO REMOVE/REINSTALL HVAC SYSTEMS. REPLACE ANY DAMAGED TILES/GRID TO MATCH EXIST.
- REMOVE (2) EXISTING 10X16 ACCESS DOORS IN CHASE WALL. REMOVE GYP BOARD AS REQ'D TO ACCESS DUCTWORK IN CHASE. THE 20"0 AND 20"0 DUCT RISERS IN CHASE WERE CUT OPEN TO ACCESS FIRE DAMPERS AT THE FLOOR PENETRATION AND TAGS WERE CLOSED. AIR LEAKS FROM POINT OF ACCESS. CUT OUT REPAIRED SECTIONS OF DUCTWORK AND INSTALL AIRTIGHT DUCT ACCESS DOORS IN BOTH DUCTS TO ALLOW ACCESS TO FIRE DAMPERS. REPAIR CHASE WALL AND INSTALL (2) NEW 20X20 ACCESS DOORS. POSITION ACCESS DOORS TO ALLOW SERVICE ACCESS TO DUCT ACCESS DOORS AND FIRE DAMPERS. PATCH AND PAINT WALL TO MATCH EXISTING COLOR AND TEXTURE.



2 LEVEL 5, AREA B: HVAC PLAN
1/8"=1'-0"

KEYED NOTES: HVAC PLAN

- PROVIDE NEW CONTROL. WIRING FROM FDU BACK TO EXISTING CONTROL. PANEL IN EQUIPMENT ROOM. FIELD VERIFY LOCATION AND POINT CAPACITY. INTEGRATE NEW FDU ONTO EXISTING BMS. PROVIDE GRAPHICS AT OPERATORS WORKSTATION INDICATING SPACE TEMPERATURE SETPOINT, SPACE TEMPERATURE AND LEAVING AIR TEMPERATURE.
- REWORK/RECONNECT FDU ON DUCT SERVING EXISTING FDU IN CORRIDOR. REBALANCE OA TO EXISTING FDU TO 40 CFM.



3 LEVEL 5, AREA B: REFLECTED CEILING PLAN
1/8"=1'-0"

GENERAL NOTES: REFLECTED CEILING PLAN

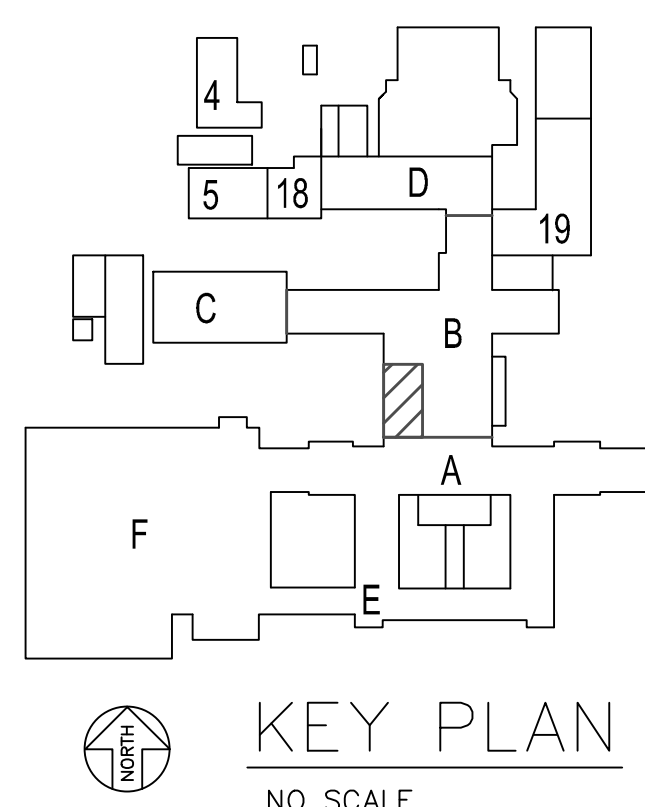
- FIELD VERIFY LOCATION OF EXISTING SPRINKLER PIPE & HEADS. MAINTAIN FUNCTION OF FIRE SPRINKLER/ALARM SYSTEM DURING CONSTRUCTION. RELOCATE PIPING AND HEADS AS REQ'D TO INSTALL NEW CEILING GRID AND CEILING TILES. FAN COIL UNITS AND AIR DISTRIBUTION DEVICES.
- FIELD VERIFY QUANTITY AND LOCATION OF EXISTING FIXTURES & DEVICES INSTALLED IN CEILING. SUPPORT FIXTURES AND DEVICES FROM STRUCTURE AS REQ'D TO REMOVE THE EXISTING CEILING SYSTEM AND INSTALL NEW CEILING GRID AND CEILING TILES. REINSTALL FIXTURES AND DEVICES IN NEW CEILING.
- REMOVE THE EXISTING 2X2 CEILING SYSTEM IN ROOMS SB100, SB100A, SB100B AND SB100C. INSTALL NEW 2X2 CEILING SYSTEM. GRID AND TILE MATERIAL/COLOR TO MATCH REMOVED SYSTEM. EXISTING HEADERS TO REMAIN. PATCH AND PAINT HEADERS TO MATCH EXISTING HEADER COLOR AND TEXTURE.
- PATCH AND PAINT ANY WALLS DAMAGED DURING CONSTRUCTION TO MATCH EXISTING WALL COLOR AND TEXTURE.
- PATCH AND PAINT WALL AROUND TSTATS TO MATCH EXISTING WALL COLOR AND TEXTURE.
- PROVIDE SERVICE ACCESS IDENTIFICATION
 - USE COLORED MARKERS WITH PRESSURE SENSITIVE ADHESIVE ON ONE SIDE.
 - MAKE COLORED MARKERS OF PAPER OF PLASTIC, 6 TO 9 MM (1/4 TO 3/8 INCH) IN DIAMETER.
 - COLOR CODE: USE FOLLOWING COLOR MARKERS FOR SERVICE IDENTIFICATION:

COLOR	SERVICE
RED	SPRINKLER SYSTEM: VALVES AND CONTROLS
GREEN	DOMESTIC WATER: VALVES AND CONTROLS
YELLOW	CHILLED WATER AND HEATING WATER
ORANGE	DUCTWORK: FIRE DAMPERS
BLUE	DUCTWORK: DAMPERS AND CONTROLS
BLACK	GAS: LABORATORY, MEDICAL, AIR AND VACUUM

REVISIONS:	
1	3-28-2013

GENERAL NOTES:

- EXISTING CONDITIONS SHOWN WERE DERIVED FROM OWNER FURNISHED DRAWINGS AND FIELD OBSERVATIONS. FIELD VERIFY LOCATION, SIZE, ROUTING AND QUANTITY OF ALL EQUIPMENT, PIPING, CONDUIT AND SYSTEMS.
- SOME EXISTING SYSTEMS AND EQUIPMENT ARE NOT SHOWN FOR CLARITY. FIELD VERIFY EXISTING CONDITIONS.
- REUSE EXISTING HANGERS AS APPLICABLE. REPAIR/REPLACE/PROVIDE NEW HANGERS AS REQUIRED. REMOVE HANGERS NOT UTILIZED DURING CONSTRUCTION.
- FIELD VERIFY LOCATION AND ROUTING OF ALL MEDICAL GAS PIPING AND EQUIPMENT. WORK ON THESE SYSTEMS IS NOT INCLUDED IN THE SCOPE OF WORK.



This seal appearing on this document was authorized by Robert M. Dawes, 20079 on 10/20/2013. Alteration of a sealed document without proper notification to the responsible engineer is an offense under the Texas Engineering Practice Act.



RMD CONSULTING, LLC.
2015 VALLEY VIEW, SUITE 214
DALLAS, TEXAS 75224
P. 972-488-8077 F. 972-488-8174
RDOC JOB # 12-3702A © 2013
OKLAHOMA REGISTERED ENGINEERING FIRM: 5183

Drawing Title LEVEL 5, AREA B: HVAC PLAN & CEILING PLAN		Project Title CORRECT HVAC DEFICIENCIES IN 5B100 AND BREEZEWAYS		Date MARCH 5, 2013
Approved: Division Chief		Building Number 1		Project No. 635-12-313
Approved: Service Director		Checked		Drawn
Location VA MEDICAL CENTER OKLAHOMA CITY, OKLAHOMA		DRAWING NO. 1-M3.00		Dwg. 5 of 12

DEPARTMENT of
VETERANS AFFAIRS