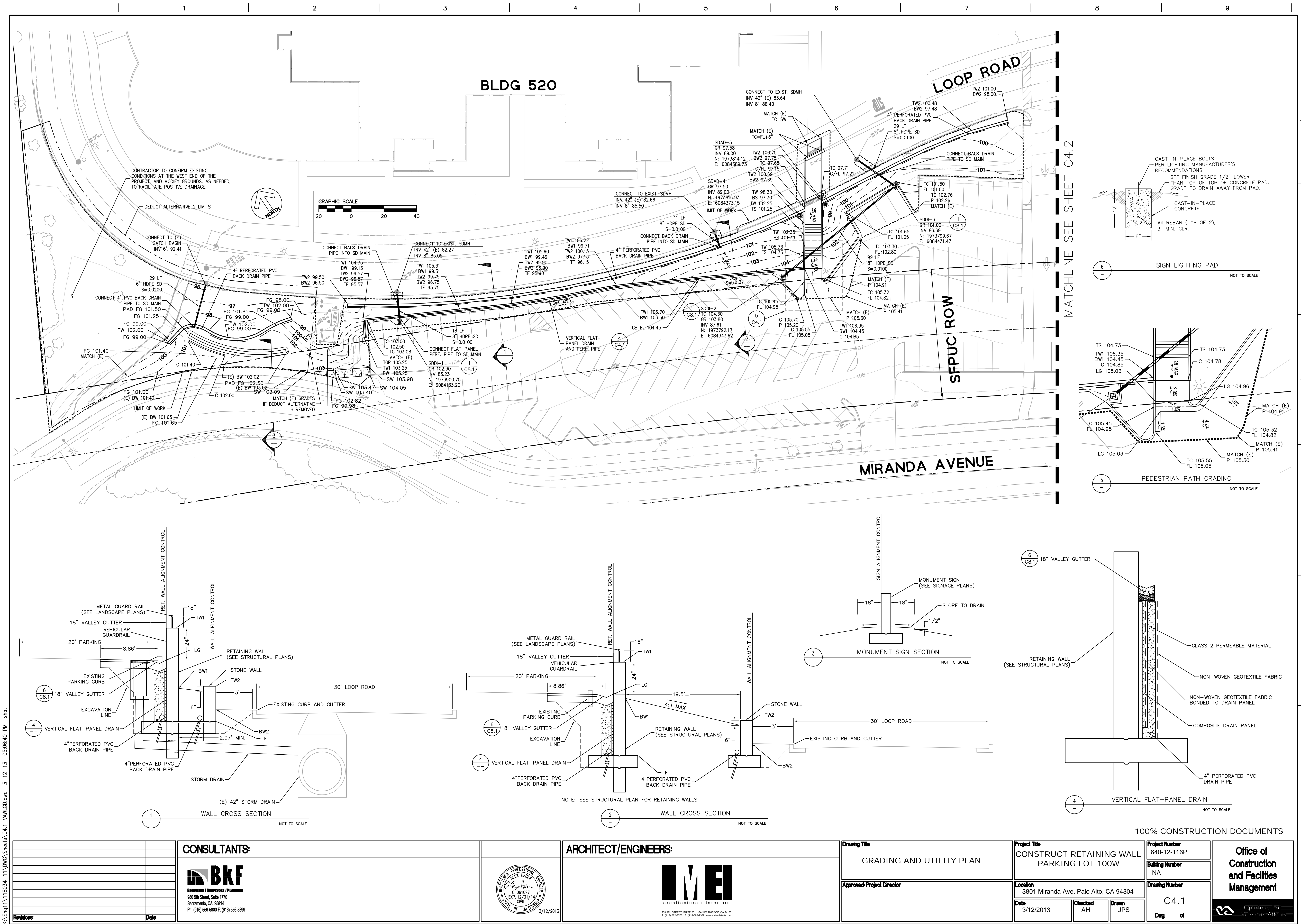
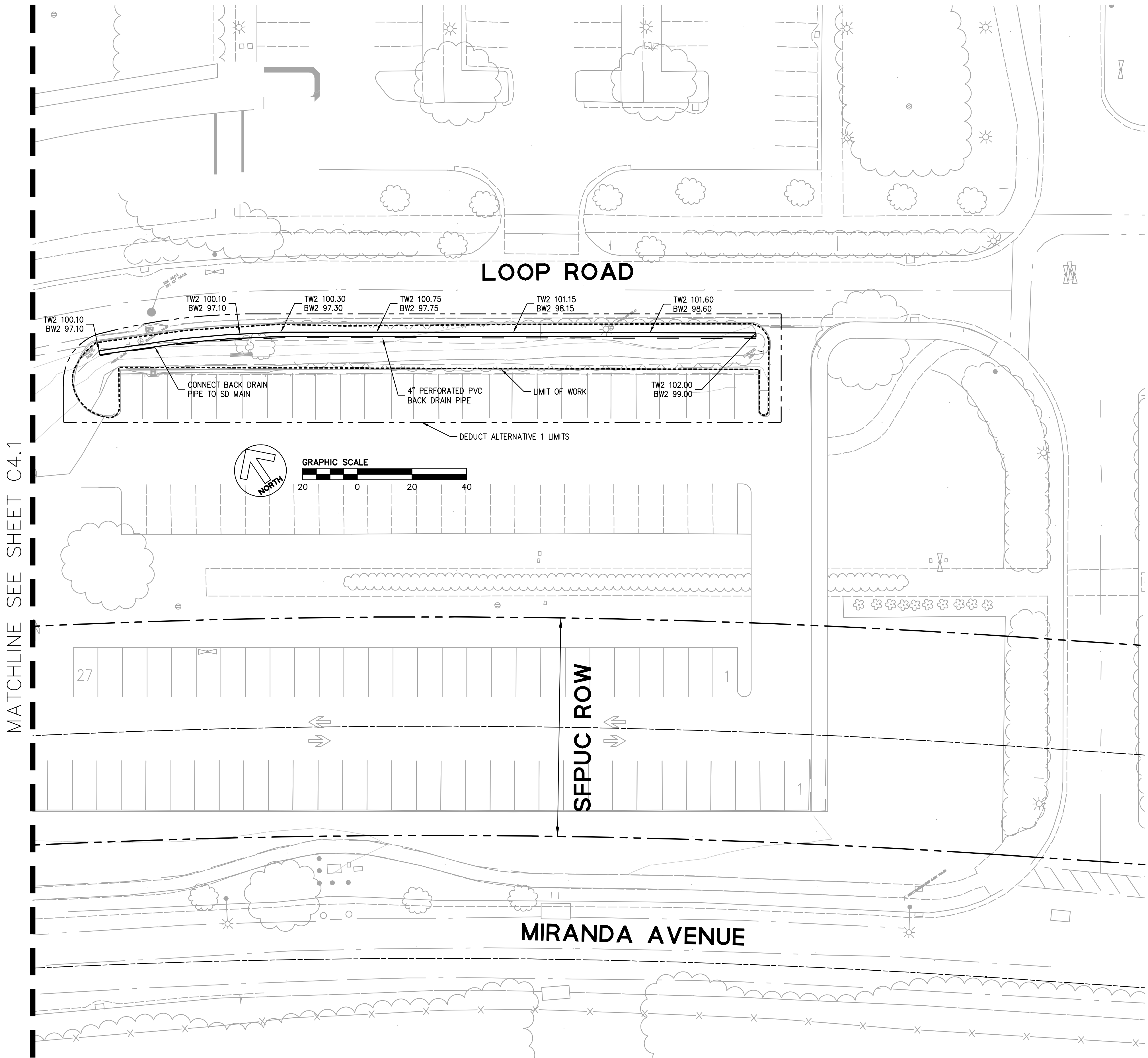



VA FORM 08-6231

three inches = one foot
one and one half inches = one foot
one inch = one foot
three quarters inch = one foot
one half inch = one foot
three eighths inch = one foot
one quarter inch = one foot
one eighth inch = one foot



one eighth inch = one foot
one quarter inch = one foot
one half inch = one foot
three eighths inch = one foot
one inch = one foot
one and one half inches = one foot
three inches = one foot

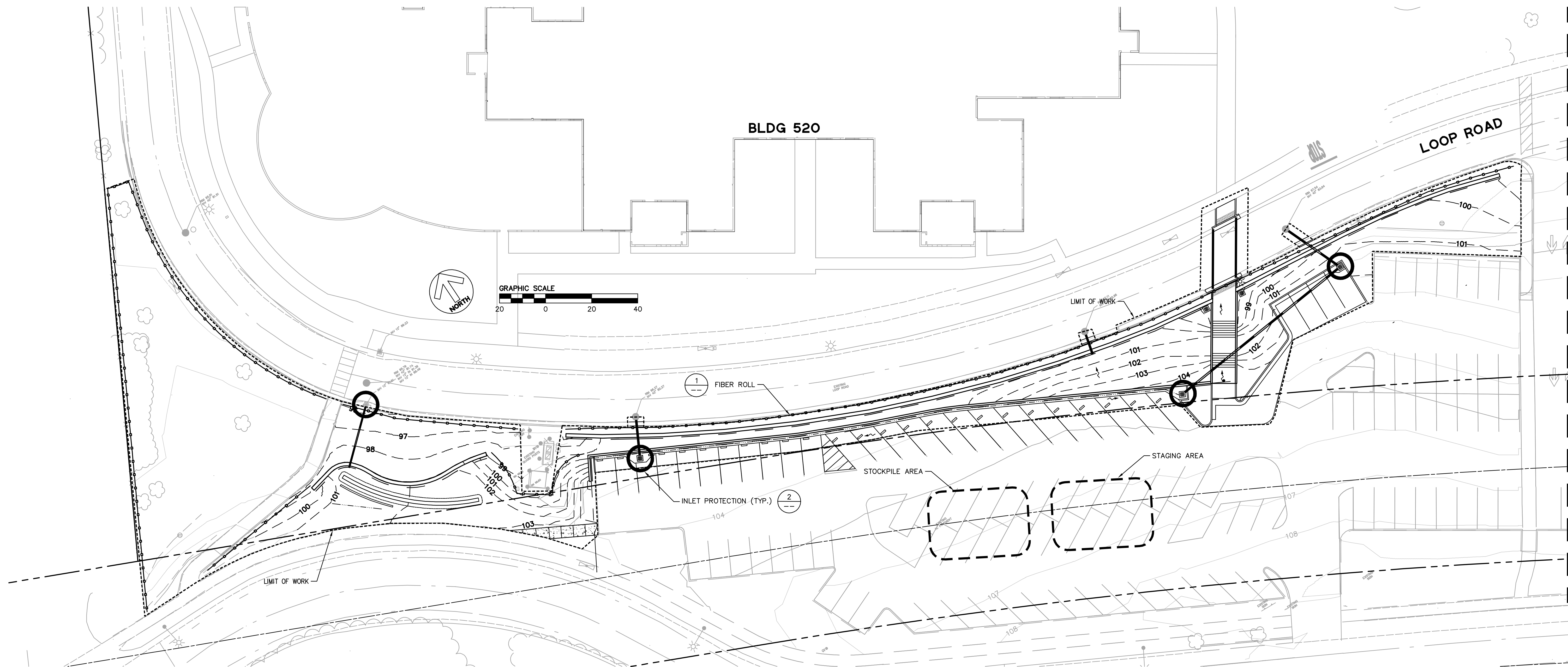


100% CONSTRUCTION DOCUMENTS																	
		CONSULTANTS:				ARCHITECT/ENGINEERS:		Drawing Title		Project Title		Project Number		Office of Construction and Facilities Management			
		 BKF ENGINEERS / SURVEYORS / PLANNERS 980 9th Street, Suite 1770 Sacramento, CA 95814 Ph: (916) 556-5800 F: (916) 556-5899				 MEI architecture + interiors 239 9TH STREET, SUITE 201, SAN FRANCISCO, CA 94103 T: (415) 662-7376 F: (415) 662-7330 www.meiarchitecture.com		GRADING AND UTILITY PLAN		CONSTRUCT RETAINING WALL PARKING LOT 100W		Building Number					
												NA					
												Drawing Number					
												C4.2					
Revisions		Date				Approved Project Director		Location		Date		Checked		Drawn		Dwg. of	
								3801 Miranda Ave. Palo Alto, CA 94304		3/12/2013		AH		JPS			

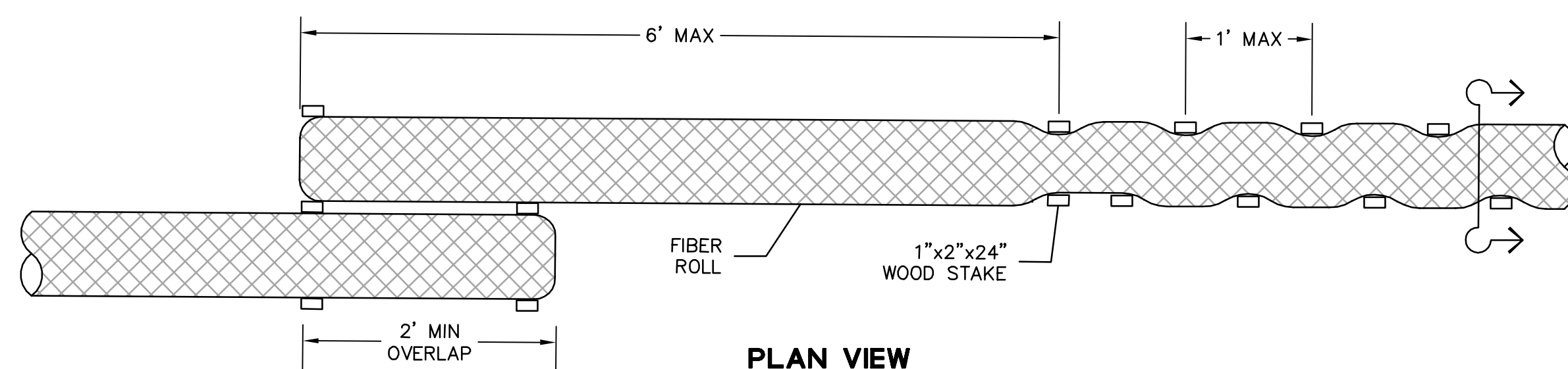
three inches = one foot
one and one half inches = one foot
one inch = one foot
three quarters inch = one foot
one half inch = one foot
three eighths inch = one foot
one quarter inch = one foot
one eighth inch = one foot

3-12-13 03:07:04 PM stat
K:\Eng\1116034-11\DWG\Sheets\06-1-WALKER.dwg

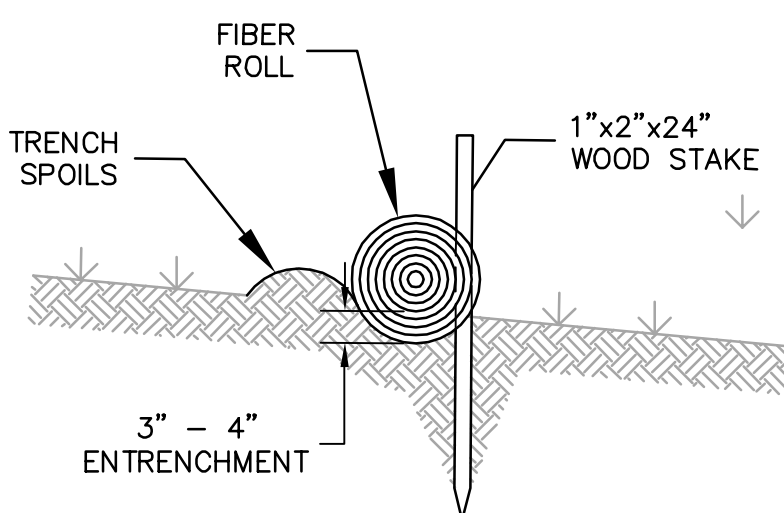
VA FORM 08-6231



MATCHLINE SEE SHEET C6.2



PLAN VIEW



SECTION VIEW

1 FIBER ROLL
NOT TO SCALE

SILTSACK®
SPECIFICATIONS

NOTE: THE SILTSACK WILL BE MANUFACTURED FROM A WOVEN POLYPROPYLENE FABRIC THAT MEETS OR EXCEEDS THE FOLLOWING SPECIFICATIONS.

REGULAR FLOW SILTSACK®
(FOR AREAS OF LOW TO MODERATE PRECIPITATION AND RUN-OFF)

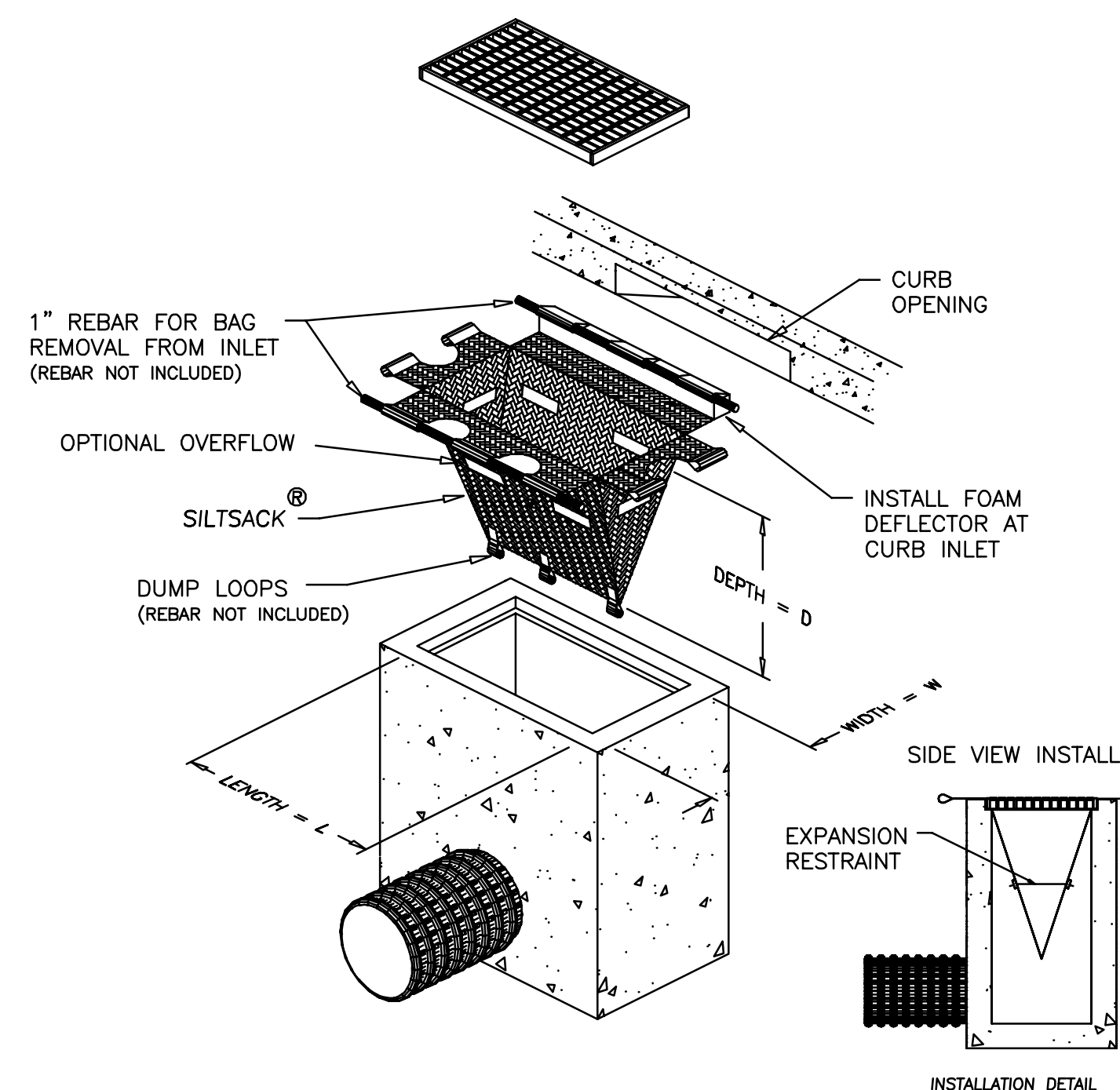
PROPERTIES	TEST METHOD	UNITS	
GRAB TENSILE STRENGTH	ASTM D-4632	300 LBS	
GRAB TENSILE ELONGATION	ASTM D-4632	20 %	
PUNCTURE	ASTM D-4633	120 LBS	
MULLEN BURST	ASTM D-3786	800 PSI	
TRAPEZOID TEAR	ASTM D-4533	120 LBS	
UV RESISTANCE	ASTM D-4355	80 %	
APARENT OPENING SIZE	ASTM D-751	40 US SEIVE	
FLOW RATE	ASTM D-4491	40 GAL/MIN/SQ FT	
PERMITTIVITY	ASTM D-4491	0.55 SEC -1	

HI-FLOW SILTSACK®
(FOR AREAS OF MODERATE TO HEAVY PRECIPITATION AND RUN-OFF)

PROPERTIES	TEST METHOD	UNITS	
GRAB TENSILE STRENGTH	ASTM D-4632	265 LBS	
GRAB TENSILE ELONGATION	ASTM D-4632	20 %	
PUNCTURE	ASTM D-4633	135 LBS	
MULLEN BURST	ASTM D-3786	420 PSI	
TRAPEZOID TEAR	ASTM D-4533	45 LBS	
UV RESISTANCE	ASTM D-4355	90 %	
APARENT OPENING SIZE	ASTM D-751	20 US SEIVE	
FLOW RATE	ASTM D-4491	200 GAL/MIN/SQ FT	
PERMITTIVITY	ASTM D-4491	1.5 SEC -1	

OIL-ABSORBANT SILTSACK®
(FOR AREAS WHERE THERE IS A CONCERN FOR OIL RUN-OFF OR SPILLS)

DEPENDING ON YOUR PARTICULAR APPLICATION, THE SILTSACK CAN BE MADE FROM EITHER ONE OF THE ABOVE FABRICS WITH AN OIL-ABSORBANT PILLLOW INSERT OR, MADE COMPLETELY FROM AN OIL-ABSORBANT SILTSACK® WITH A WOVEN PILLLOW INSERT.



DETAIL OF INLET SEDIMENT CONTROL DEVICE
WITH CURB DEFLECTOR

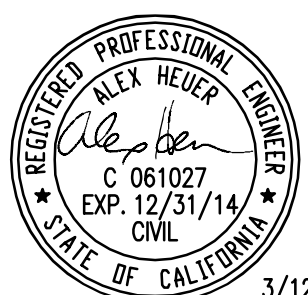
2 INLET PROTECTION
NOT TO SCALE

100% CONSTRUCTION DOCUMENTS

CONSULTANTS:



ARCHITECT/ENGINEERS:



Drawing Title

EROSION CONTROL PLAN

Approved Project Director

Project Title

CONSTRUCT RETAINING WALL
PARKING LOT 100W

Location

3801 Miranda Ave. Palo Alto, CA 94304

Date

3/12/2013

Checked

AH

Drawn

JPS

Project Number

640-12-116P

Building Number

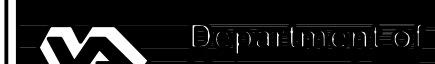
NA

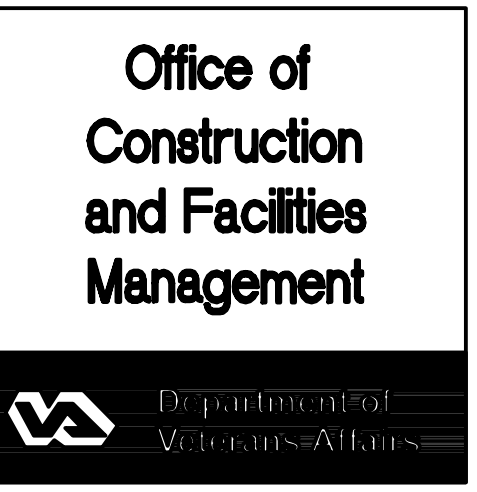
Drawing Number

C6.1

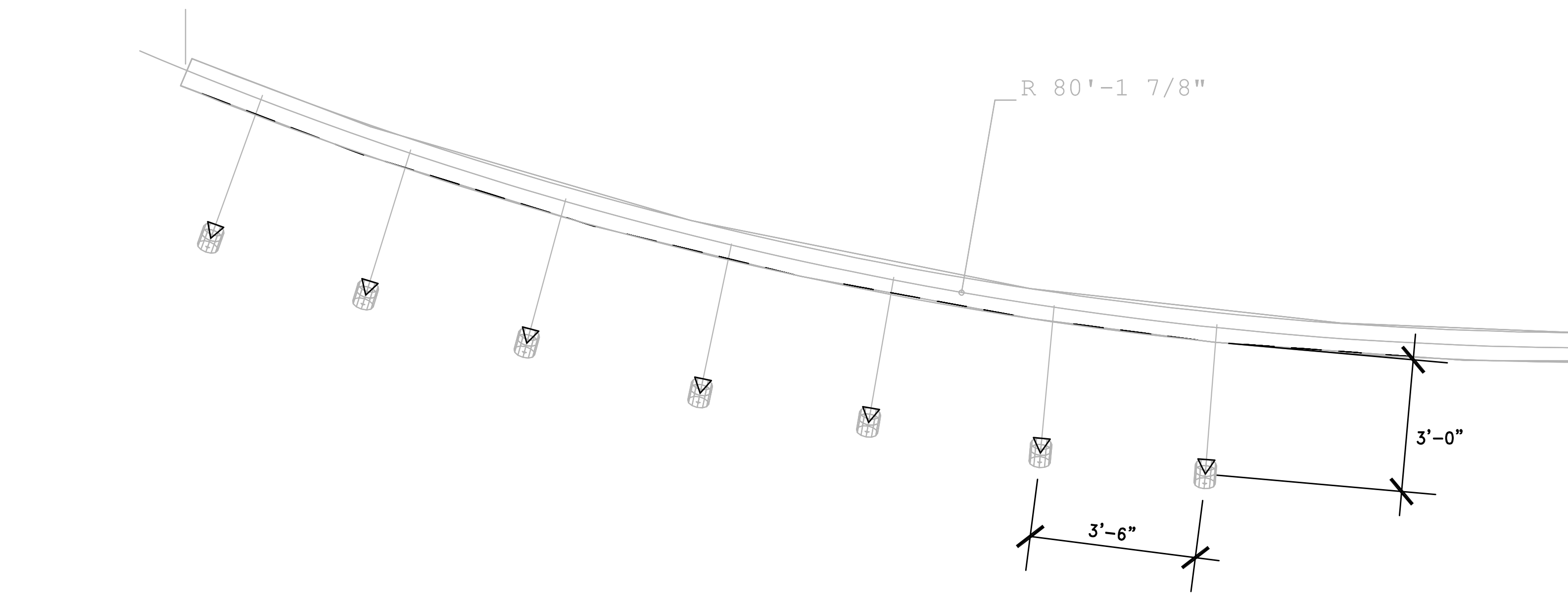
Deg. of

Office of
Construction
and Facilities
Management





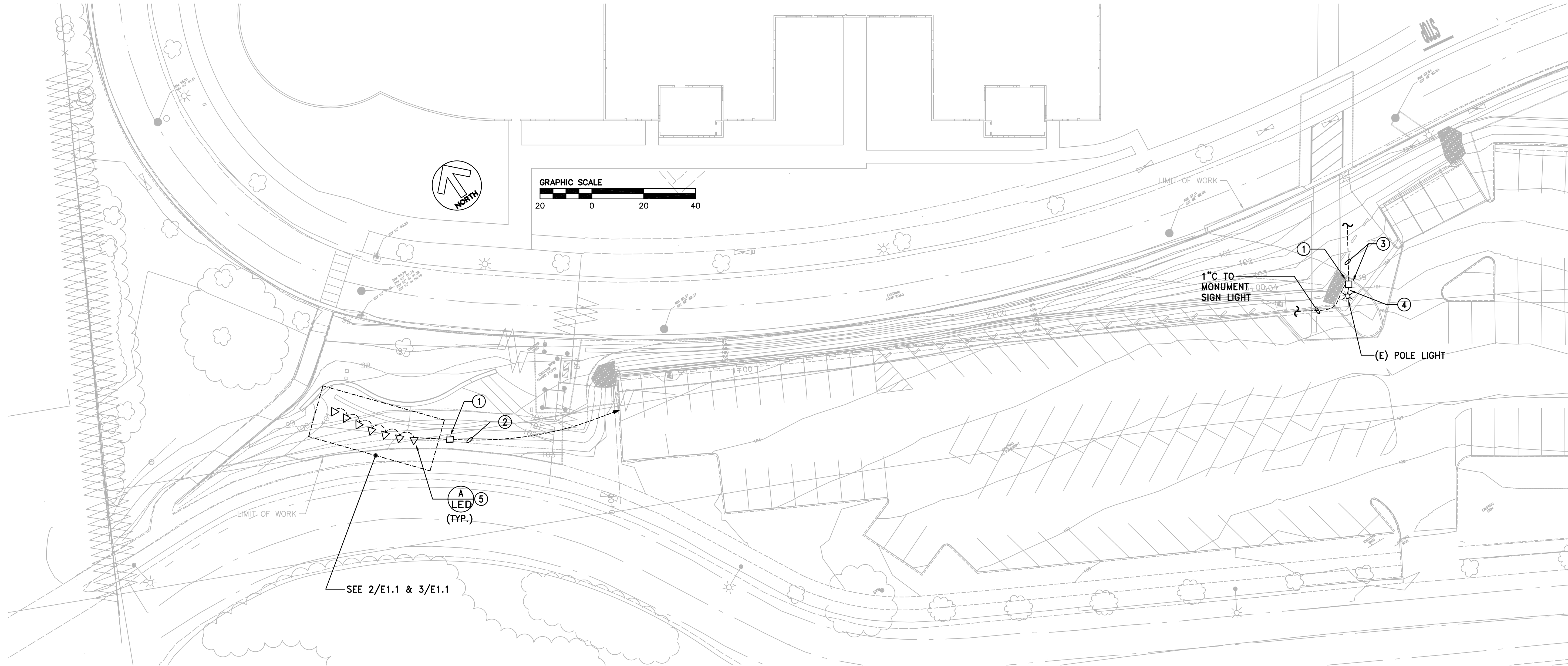
three inches = one foot
one and one half inches = one foot
one inch = one foot
three quarters inch = one foot
one half inch = one foot
three eighths inch = one foot
one quarter inch = one foot
one eighth inch = one foot



2 ENLARGED PLAN
SCALE: 1/2"=1'-0"

11.8	17.6	17.5	16.0	18.5	18.4	15.9	17.6	19.5	15.2	15.8	18.8	17.5	17.1	19.5	17.2	15.9	18.9	15.9	16.5	14.9	8.6	3.4	1.2
19.4	31.8	28.9	23.9	31.3	30.7	23.3	28.1	33.5	22.2	23.6	31.4	27.7	26.9	33.6	27.0	22.9	32.0	23.5	26.2	26.8	12.6	4.0	1.2
19.8	36.9	30.3	22.3	35.1	32.9	21.2	28.6	36.7	20.4	22.6	34.4	29.0	26.5	37.1	26.3	20.6	35.2	21.7	26.2	29.6	11.7	3.1	0.9


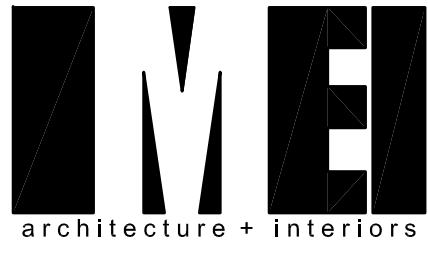
3 PHOTOMETRIC PLAN - ELEVATION VIEW
SCALE: 1/2"=1'-0"



1 CONSTRUCTION PLAN - ELECTRICAL
SCALE: 1"=20'-0"

LIGHTING FIXTURE SCHEDULE *				
TYPE	DESCRIPTION	LAMPS	VOLTS	MANUFACTURER
A ▽	EXTERIOR LUMEBEAM LIGHT FIXTURE WITH CORROSION RESISTANT, YOKE MOUNT PROVIDE REBAR CONCRETE FOOTING AND CONCRETE BLOCK WITH CAST-IN PLACE THREADED BOLTS TO MOUNT THE FIXTURE	14W LED 3500K	**	LUMENPULSE LBS-WFL-LSLH-CRC
* 1. CONTRACTOR SHALL VERIFY CATALOG NUMBER WITH FIXTURE DESCRIPTION AND PROVIDE DESCRIBED MODIFICATIONS.				
** 2. CONTRACTOR SHALL FIELD VERIFY EXISTING POLE LIGHT VOLTAGE.				

- SHEET NOTES**
- NEW FLUSH IN-GROUND PULLBOX, CHRISTY #N9 OR EQUAL, WITH LID LABELED "LIGHTING".
 - CONNECT TO (E) POLE LIGHTING CIRCUIT. 1"C, 2#8+1#8 GROUND VIA PULL BOX.
 - INTERCEPT (E) UNDERGROUND RACEWAY AND SET NEW PULL BOX. EXTEND CONDUIT AND WIRING + GROUND TO MATCH EXISTING AND RECONNECT EXISTING LIGHTING CIRCUIT.
 - INTERCEPT (E) UNDERGROUND RACEWAY AND SET NEW PULL BOX AT THIS LOCATION. RECONNECT EXISTING LIGHTING FIXTURE.
 - PROVIDE LIQUID TIGHT FLEXIBLE STEEL CONDUIT AND WEATHERPROOF OUTLET FOR EACH LIGHT FIXTURE.

CONSULTANTS:		ARCHITECT/ENGINEERS:		Drawing Title CONSTRUCTION - PLAN ELECTRICAL		Project Title CONSTRUCT RETAINING WALL PARKING LOT 100W		Project Number 640-12-116P		Office of Construction and Facilities Management Department of Veterans Affairs	
 330 FRANKLIN, SUITE 400, OAKLAND, CA 94607 PHONE: (510) 763-7475 FAX: (510) 763-7033		 229 9TH STREET, SUITE 201, SAN FRANCISCO, CA 94103 TEL: (415) 682-7372 FAX: (415) 682-7330 www.meiinteriors.com		Approved Project Director		Location 3801 Miranda Ave. Palo Alto, CA 94304		Building Number NA			
Revisions		Date		Date 12/17/2012		Checked SJ/MF		Drawn FWA TEAM			
								E1.1 Dwg. -- of			