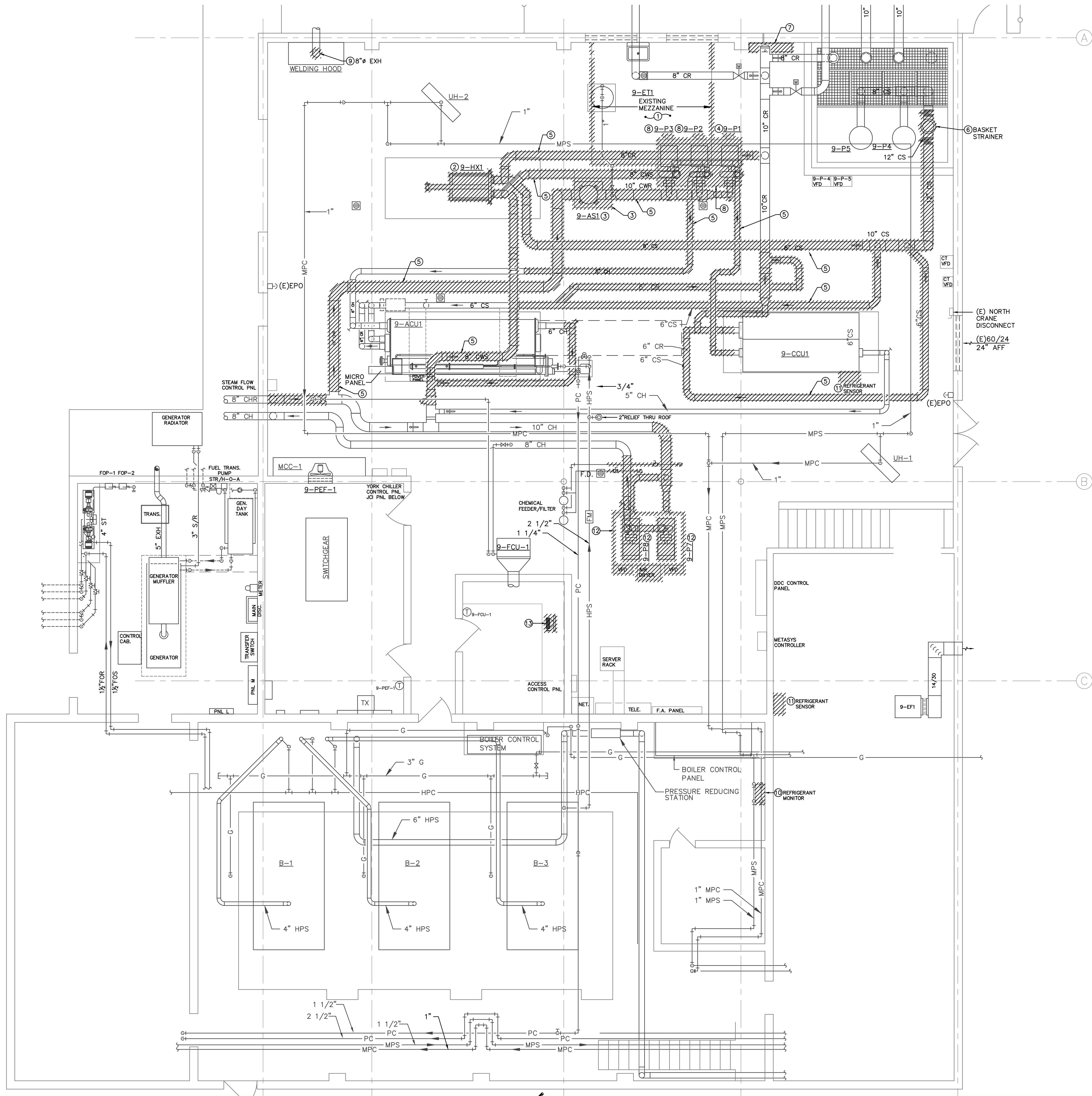


three inches = one foot
one and one-half inch = one foot
one inch = one foot
three-quarters inch = one foot
one-half inch = one foot
three-eighths inch = one foot
one-quarter inch = one foot
one-eighth inch = one foot



GENERAL DEMOLITION NOTES

1. NOT ALL EXISTING DUCTWORK AND PIPING ARE NECESSARILY SHOWN ON THIS DRAWING BUT WHAT WAS DEEMED NECESSARY TO SHOW THE INTENT OF WORK INVOLVED IN THIS PROJECT.
2. CONTRACTOR SHALL FIELD VERIFY EXISTING CONDITIONS PRIOR TO START OF ANY WORK, AND SHALL NOTIFY ARCHITECT IMMEDIATELY OF ANY DISCREPANCY BETWEEN THE DRAWINGS AND THE ACTUAL FIELD CONDITIONS.
3. CONTRACTOR SHALL REMOVE ALL MATERIALS AS REQUIRED AND SHALL GIVE THE OWNER THE OPPORTUNITY TO INSPECT SUCH MATERIALS FOR POTENTIAL SALVAGE. CONTRACTOR SHALL REMOVE FROM THE SITE ALL MATERIALS DEEMED "NON-SALVAGEABLE" BY THE OWNER. CONTRACTOR SHALL TURN OVER TO THE OWNER ALL MATERIALS DEEMED "SALVAGEABLE" BY THE OWNER.
4. REMOVE EXISTING PLATE AND FRAME HEAT EXCHANGER, PRIMARY CHILLED WATER PUMPS, SECONDARY CHILLED WATER PUMPS, PIPING SHOWN HATCHED ALONG WITH ASSOCIATED SUPPORTS, AND OTHER APPURTENANCES.
5. COORDINATE NEW WORK WITH CONTRACTING OFFICER'S REPRESENTATIVE AND CONSTRUCTION PHASING SCHEDULE.
6. REFER TO DRAWING SHEET H6 FOR MECHANICAL DETAILS, H7 THRU H9 FOR EQUIPMENT SCHEDULES AND H10 THRU H13 FOR CONTROL SCHEMATICS.

DEMOLITION KEYNOTES

- ① REMOVE EXISTING STRUCTURAL STEEL MEZZANINE IN ITS ENTIRETY.
- ② REMOVE EXISTING PLATE AND FRAME HEAT EXCHANGER (9-HX-1) AND SALVAGE FOR REINSTALLATION.
- ③ REMOVE EXISTING AIR SEPARATOR (9-AS-1) AND SALVAGE FOR REINSTALLATION AND ITS EXISTING CONCRETE HOUSEKEEPING PAD.
- ④ REMOVE EXISTING PRIMARY CHILLED WATER PUMPS (9-P-1).
- ⑤ REMOVE EXISTING PIPING SHOWN HATCHED.
- ⑥ REMOVE EXISTING BASKET STRAINER AND SALVAGE FOR REINSTALLATION.
- ⑦ REMOVE EXISTING CONDENSER WATER CHEMICAL TREATMENT SYSTEM.
- ⑧ UNDER DEDUCTIVE ALTERNATE BID NO. 1: REMOVE EXISTING PRIMARY CHILLED WATER PUMPS (9-P-2 & 9-P-3) AND THEIR EXISTING CONCRETE HOUSEKEEPING PAD.
- ⑨ UNDER DEDUCTIVE ALTERNATE BID NO. 1: REMOVE PORTION OF EXISTING 8" EXHAUST DUCT TO INSTALL MOTORIZED DAMPER.
- ⑩ UNDER DEDUCTIVE ALTERNATE BID NO. 1: REMOVE EXISTING REFRIGERANT MONITOR.
- ⑪ UNDER DEDUCTIVE ALTERNATE BID NO. 1: REMOVE EXISTING REFRIGERANT SENSOR.
- ⑫ UNDER DEDUCTIVE ALTERNATE BID NO. 2: REMOVE EXISTING SECONDARY CHILLED WATER PUMPS (9-P-7 & 9-P-8), AIR DRYER, AND THEIR ASSOCIATED VFD'S AND EXISTING CONCRETE HOUSEKEEPING PAD.
- ⑬ UNDER DEDUCTIVE ALTERNATE BID NO. 4: REMOVE EXISTING ENGINEERING CONTROL CENTER (ECC).

Revisions Date		SCHENDT ENGINEERING CORPORATION CONSULTING ENGINEERS * PH. (719) 637-8850 * * FAX (719) 632-0300 * 2912 BEACON ST. COLORADO SPRINGS, CO. 80907		GONZALES CONSULTING & ENGINEERING		P.O. Box 17868 GOLDEN, COLORADO 80402 PH: 303.386.3324 FX: 720.920.9004 RICARDO@GCECOLORADO.COM		Drawing Title CHILLER PLANT DEMOLITION PLAN		Project Title REPLACEMENT OF ABSORPTION CHILLER		Project Number VA259-12-C-0219 Building Number BLDG 9 Drawing Number H2 Dwg. 5 of 16		OFFICE OF FACILITIES MANAGEMENT Department of Veterans Affairs	
Approved: Medical Center Director		Approved: Assistant Administrator, Engineering Department		Date 03/13/2013		Checked TBS		Drawn DJS							