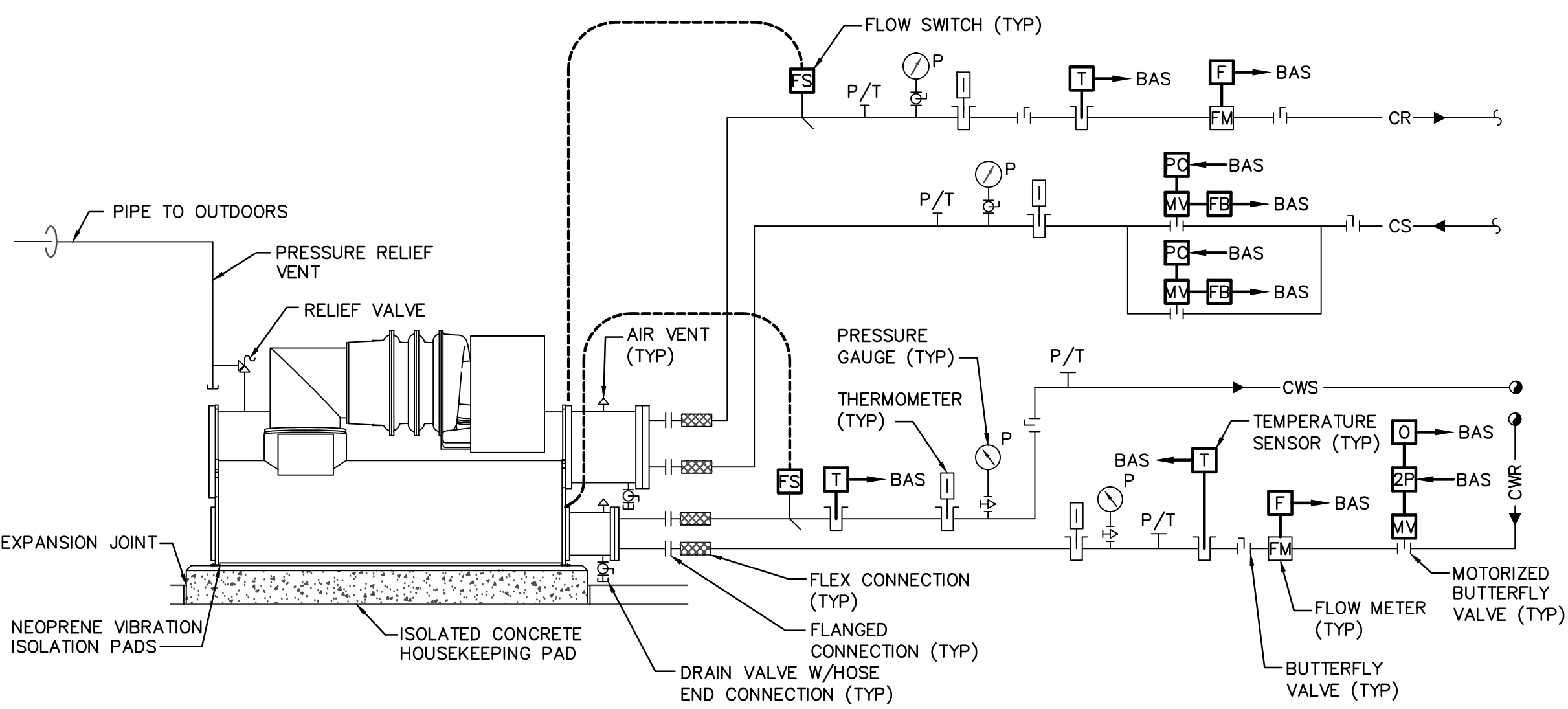
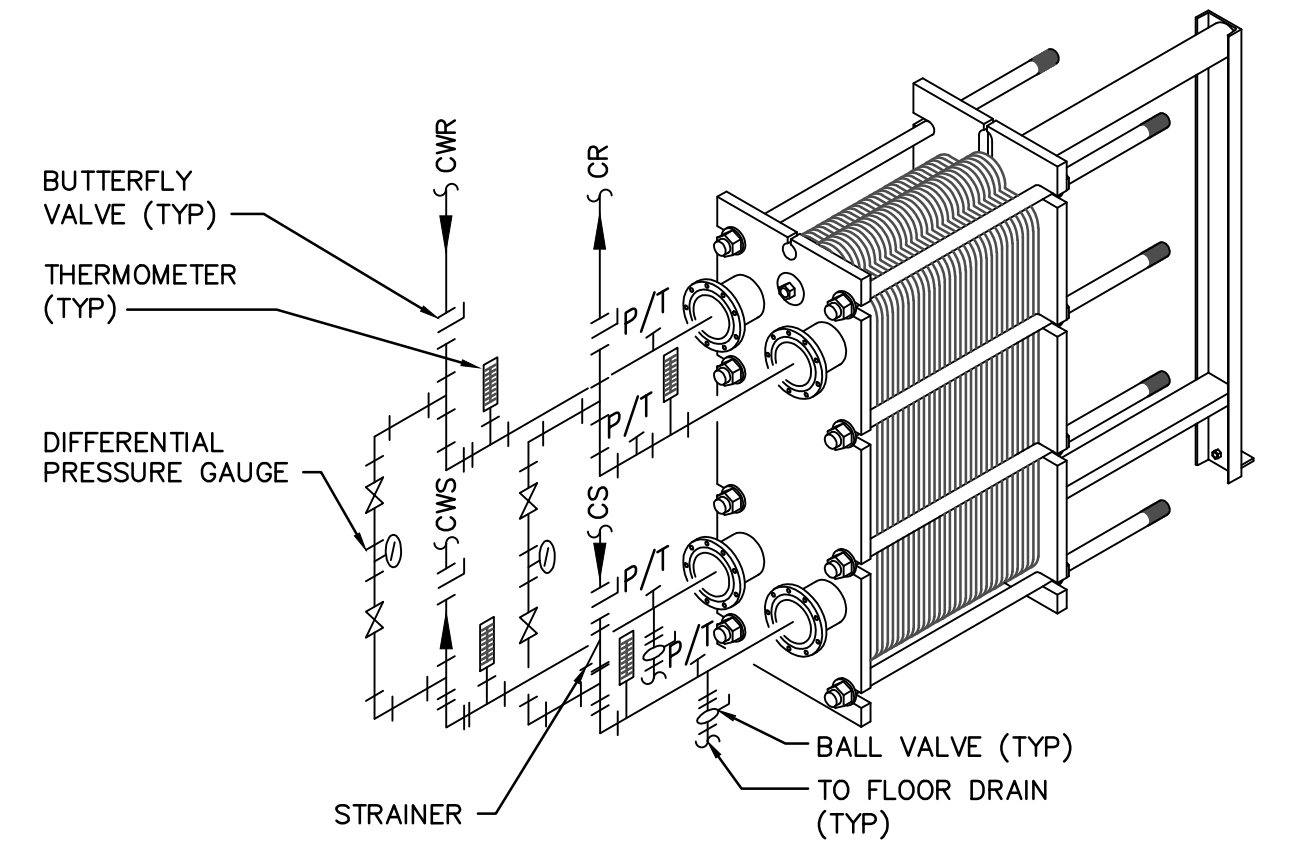


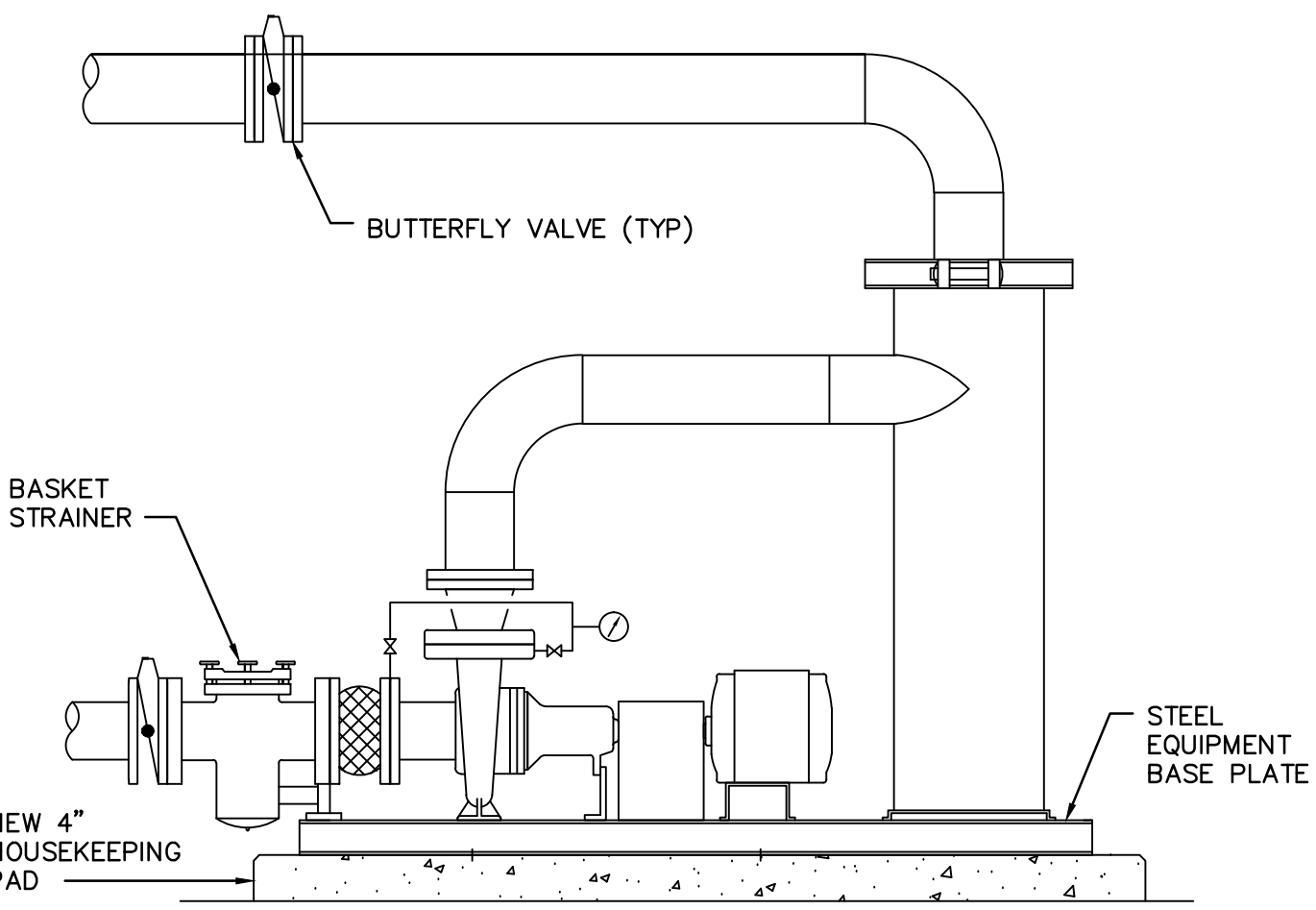
three inches = one foot
one and one-half inch = one foot
one inch = one foot
one-half inch = one foot
three-quarters inch = one foot
one-half inch = one foot
three-eighths inch = one foot
one-quarter inch = one foot
one-eighth inch = one foot



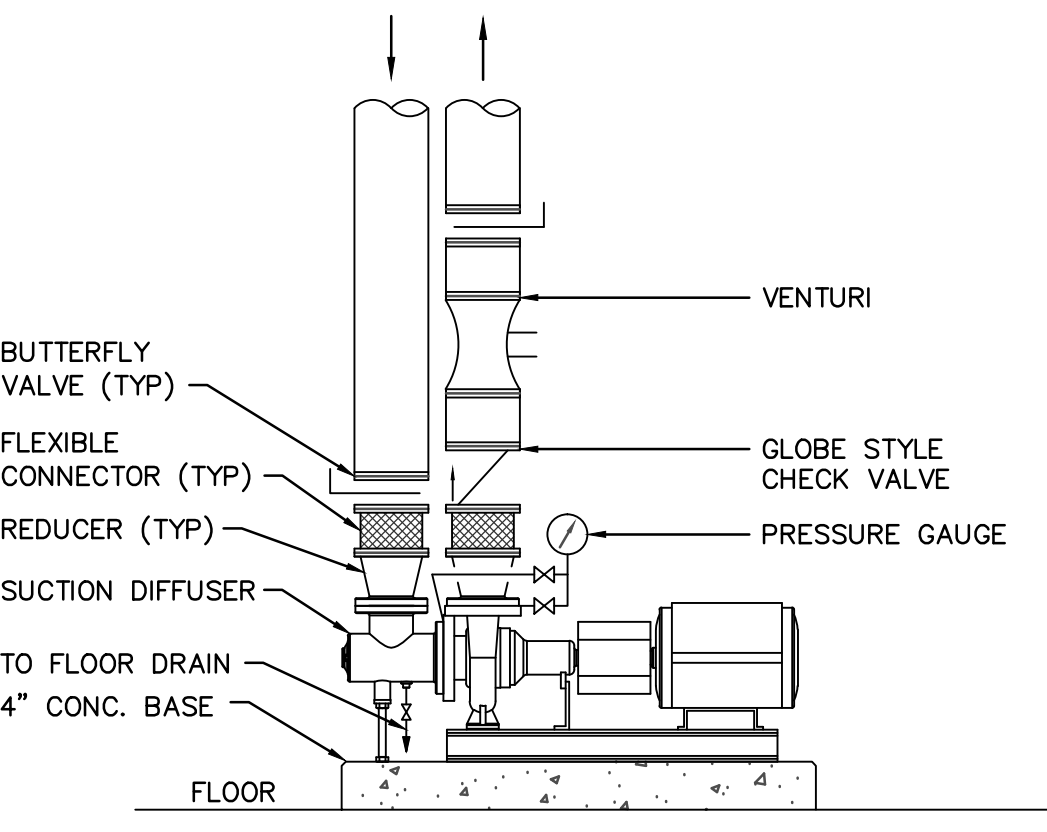
CHILLER PIPING DETAIL
NO SCALE



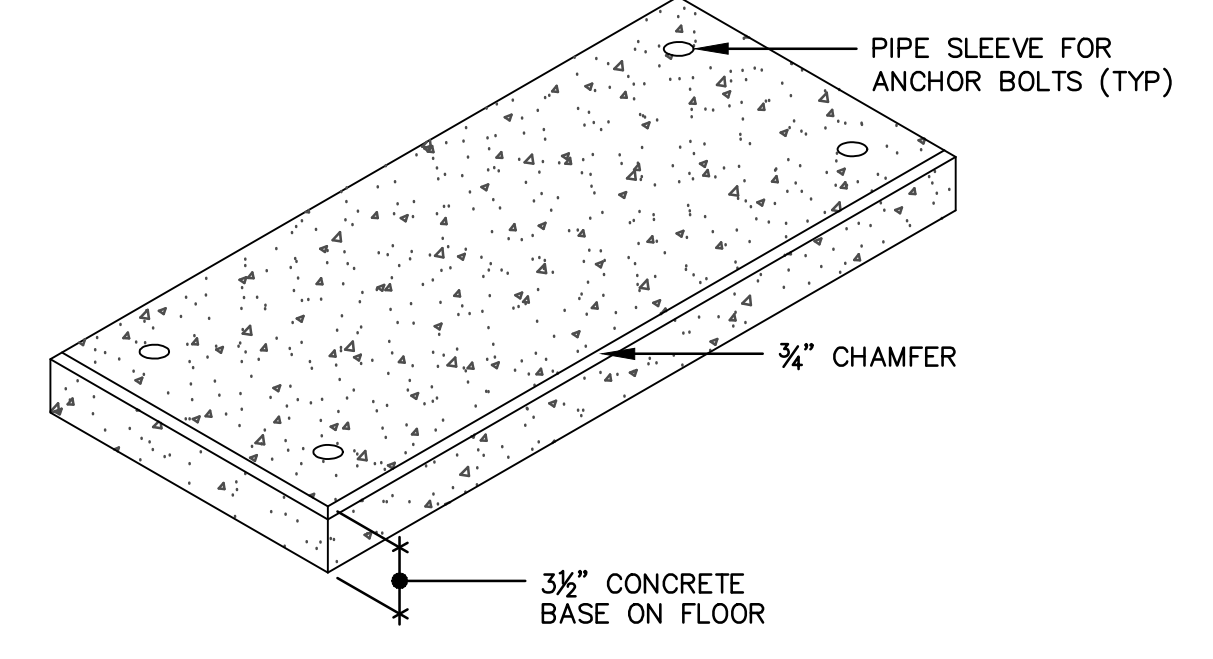
HEAT EXCHANGER DETAIL
NO SCALE



CENTRIFUGAL SEPARATOR DETAIL
NO SCALE

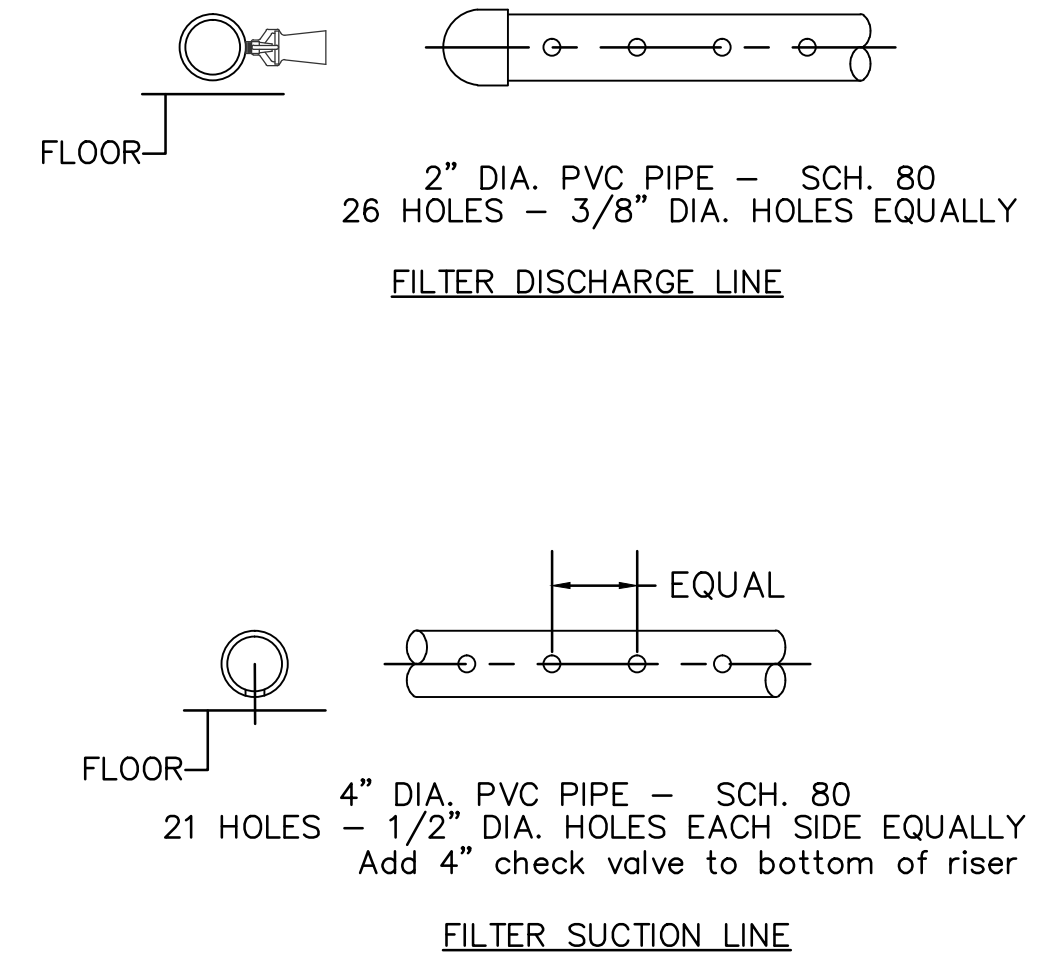
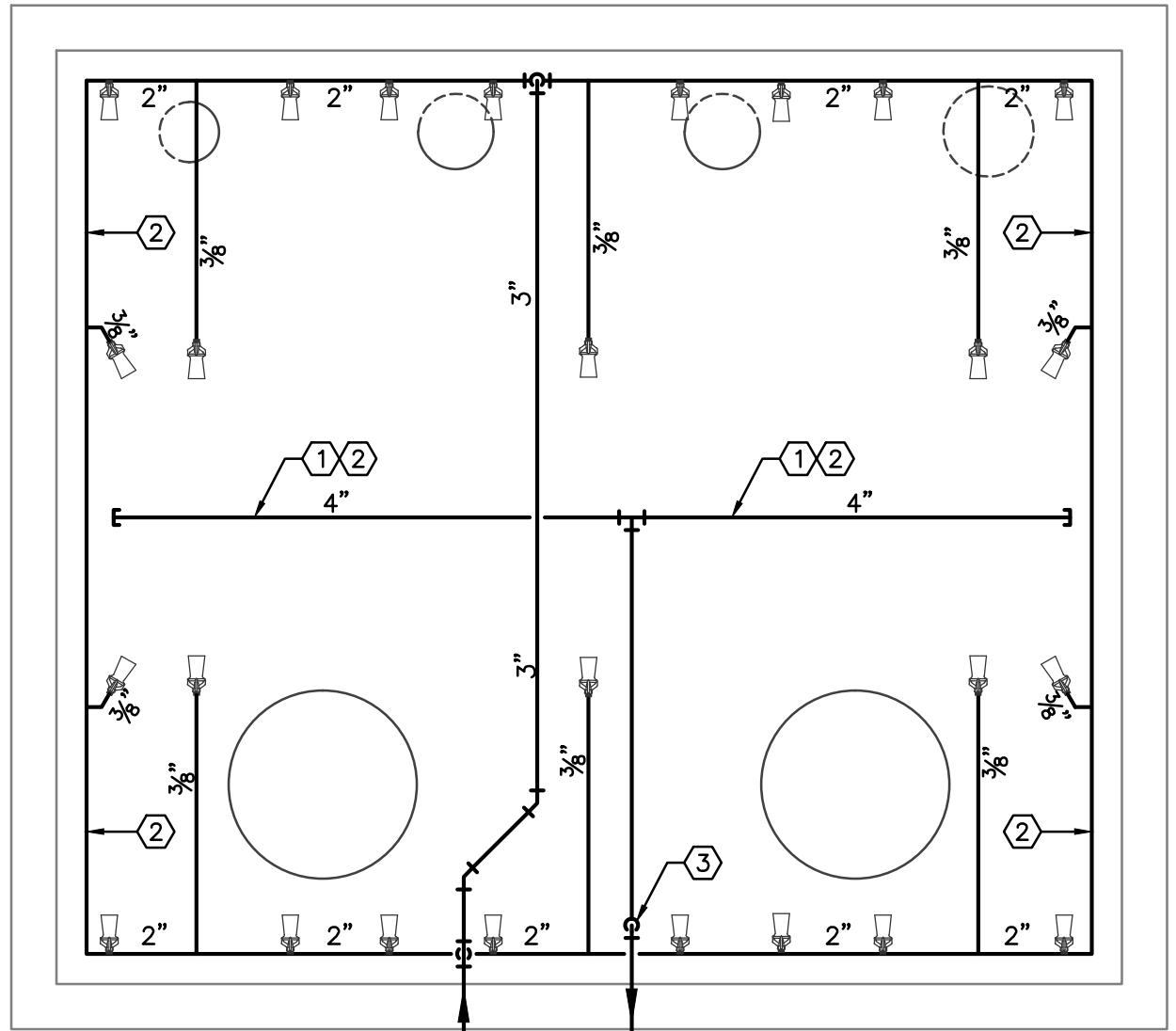


END SUCTION PUMP W/SUCTION DIFFUSER DETAIL
NO SCALE



- NOTES:
1. FOR EQUIPMENT BASES SUPPORTING EQUIPMENT AND A CONCRETE INERTIA PAD ADD THE FOLLOWING REINFORCING:
a. 6"x6" W2.9 X W2.9 WIRE MESH.
 2. FLOORS SHALL BE ROUGHENED UNDER BASE.
 3. BASE SHALL BE DOWELED TO FLOOR.
 4. ADJUST SIZE OF BASE AS REQUIRED FOR EQUIPMENT INSTALLED.

CONCRETE HOUSEKEEPING PAD DETAIL
NO SCALE



- KEYNOTES
- ① FILTER SUCTION LINE SHALL HAVE 21 EA. 1/2" HOLES ON EACH SIDE EQUALLY SPACED.
 - ② ALL PIPING SHALL BE SCHEDULE 80 PVC.
 - ③ PROVIDE CHECK VALVE AT BOTTOM OF SUCTION RISER.

SUMP BASIN SWEEPER DETAIL
NO SCALE

<div>Revisions</div> <div>Date</div>		<div>SCHENDT ENGINEERING CORPORATION CONSULTING ENGINEERS * PH: (719) 637-8850 * * FAX (719) 632-0300 * sec@secongr.com 2912 BEACON ST. COLORADO SPRINGS, CO 80907</div>		<div>GONZALES CONSULTING & ENGINEERING</div> <div></div>		<div>P.O. Box 17868 GOLDEN, COLORADO 80402 PH: 303.386.3324 FX: 720.920.9004 RICARDO@GCECOLORADO.COM</div>		<div>Drawing Title MECHANICAL DETAILS</div> <div>Approved: Medical Center Director</div> <div>Approved: Assistant Administrator, Engineering Department</div>		<div>Project Title REPLACEMENT OF ABSORPTION CHILLER</div> <div>Location 2121 NORTH AVENUE GRAND JUNCTION, CO 81505</div> <div>Date 03/13/2013</div> <div>Checked TBS</div> <div>Drawn DJS</div>		<div>Project Number VA259-12-C-0219</div> <div>Building Number BLDG 9</div> <div>Drawing Number H5 Dwg. 3 of 16</div>		<div>OFFICE OF FACILITIES MANAGEMENT</div> <div> Department of Veterans Affairs</div>	
--------------------------------------	--	--	--	--	--	--	--	---	--	--	--	---	--	---	--