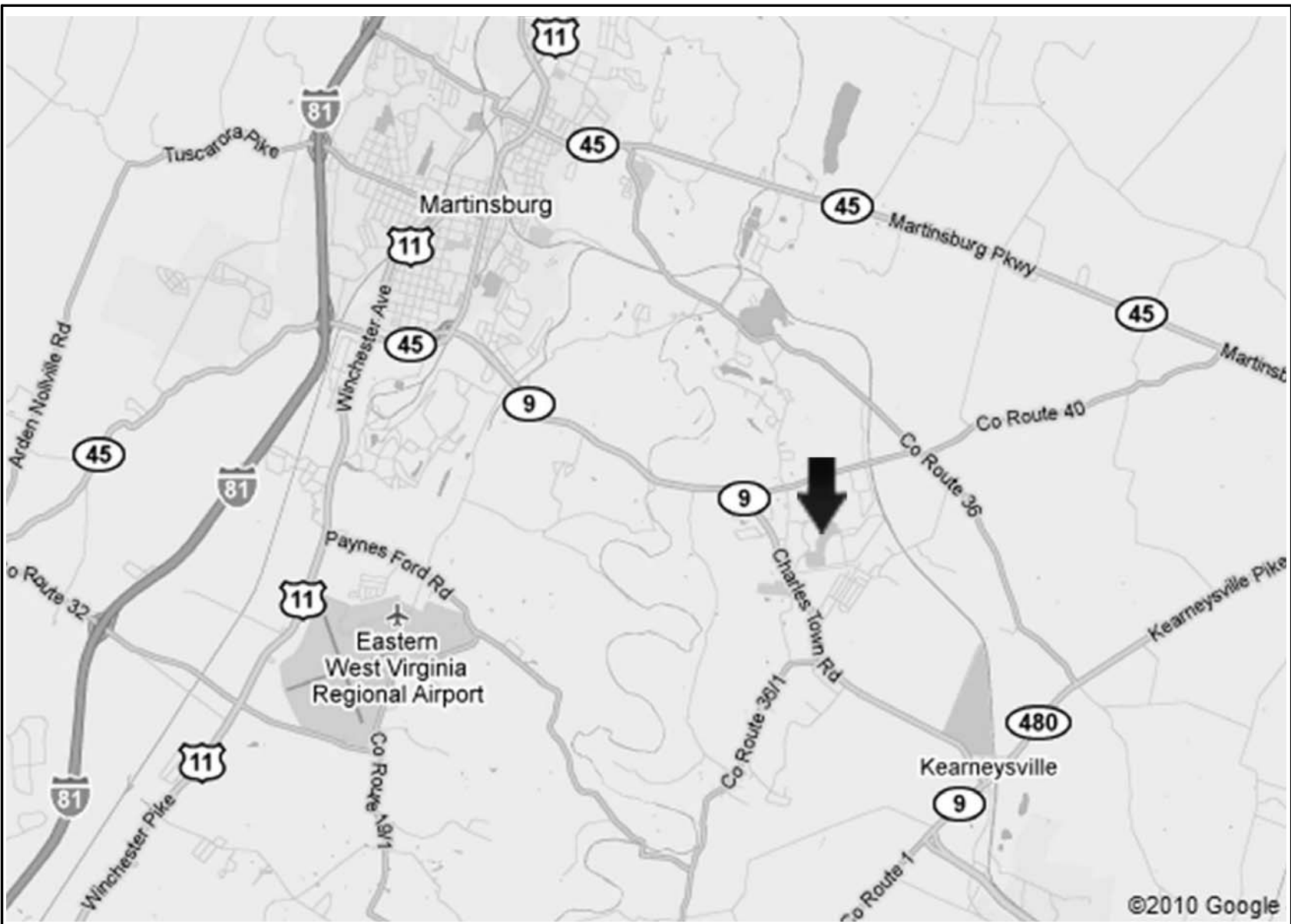


PROJECT TITLE

VA MEDICAL CENTER
MARTINSBURG, WV

CONSTRUCT
DOMICILIARY INTERNET CAFE &
REHAB MEDICINE EXPANSION

510 BUTLER AVENUE, MARTINSBURG, WEST VIRGINIA



LOCATION MAP

SYMBOLS

XXX — DRAWING NUMBER
XXX — DETAIL INDICATOR
XXX — DRAWING SHEET

— DOOR SCHEDULE OPENING NUMBER
— DOOR INDICATOR

X — COLUMN NUMBER
X — COLUMN INDICATOR

X X — WALL TYPE MARKER

NOTES

B — SCHEDULED ITEM MARKERS

— HEIGHT, ELEVATION MARKERS

1 — GENERAL NOTE MARKER

— NORTH ARROW

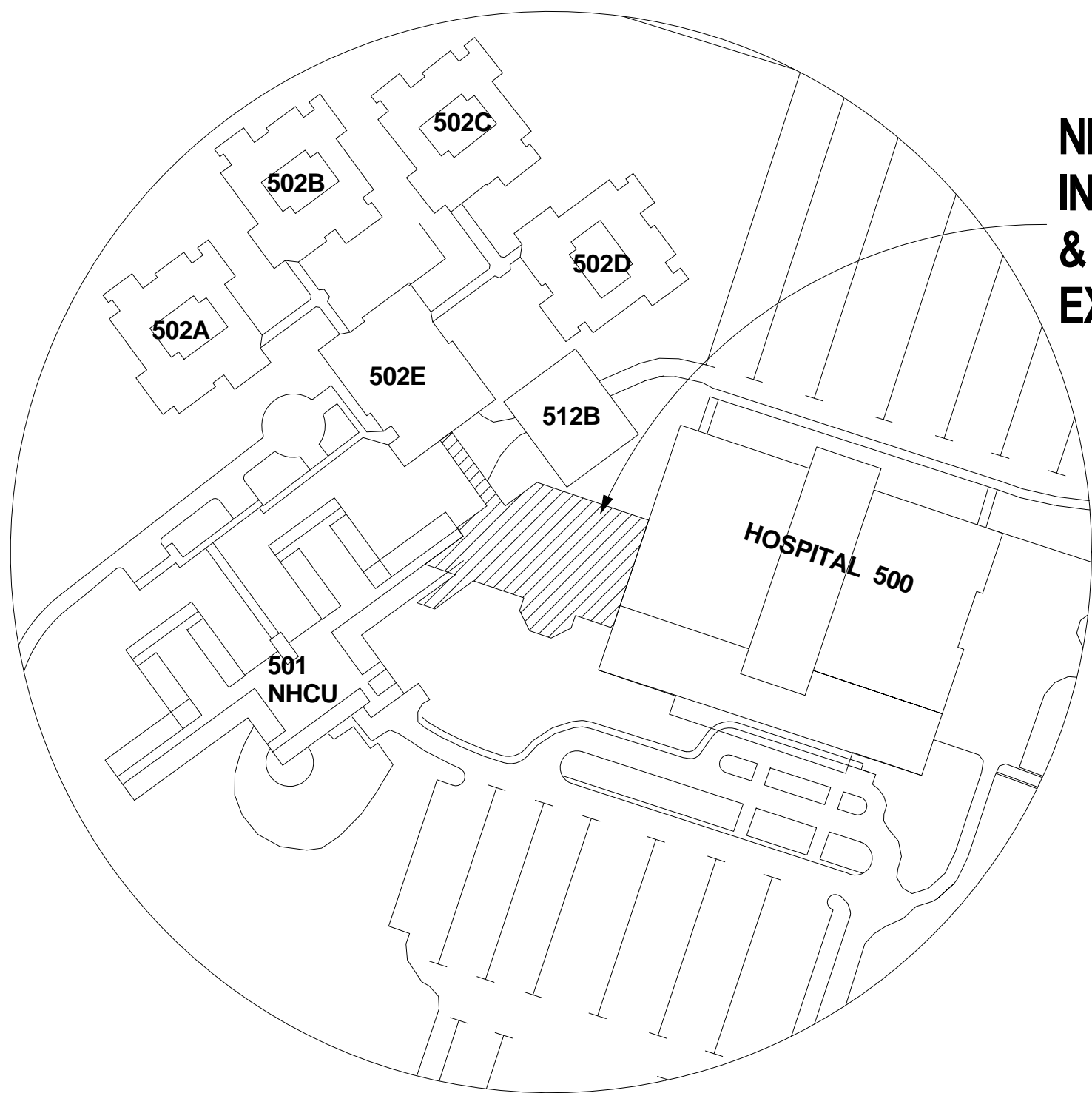
ALTERNATES

ALTERNATE NO. 1
CONNECT PANEL DP-SWW1 TO EXISTING DISTRIBUTION PANEL DP-SW1 IN ELECTRICAL ROOM AC-143D ON FIRST FLOOR INSTEAD OF CONNECTING IT TO MAIN SWITCHGEAR A IN MAIN ELECTRICAL ROOM GE-102 IN THE BASEMENT.

ALTERNATE NO. 2:
CONSTRUCTION OF PORCH AREA (APPROXIMATELY 690sf) TO NOT BE INCLUDED AS PART OF THIS PROJECT.

ALTERNATE NO. 3:
RETAINING WALL FOR FUTURE ELEVATOR SHAFT TO EXTEND ONLY FROM NEW FIRST FLOOR SLAB TO NEW ROOF.

ALTERNATE NO. 4:
UNFINISHED PM&R SPACE.



KEY PLAN

NEW BUILDING
INTERNET CAFE
& REHAB MEDICINE
EXPANSION

CONSULTANTS

Geotechnical: Schnabel Engineering
Civil and Structural: Alpha Corporation
Fire Protection: Koffel Associates, Inc.
Mechanical, Electrical, and Plumbing: Henry Adams
Telecommunications: USSi
Transportation: Robert L. Seymour



ARCHITECTS

Ernest Bland Associates, P.C.
Technical Facilities Design
802 SLIGO AVENUE, SILVER SPRING, MARYLAND 20910
TELEPHONE (301) 589-4811 FAX (301) 589-3810

Drawing Title
COVER SHEET

Approved: Project Director

Project Title
Construct
Domiciliary Internet Cafe &
Rehab Medicine Expansion

Location
Martinsburg, WV

Date
26 April 2013

Checked
Checker

Drawn
Author

100% Bid Submission

Project Number
613-CSI-113

Building Number

Drawing Number
GI001

Department
of Veterans
Affairs



DRAWING INDEX

General

GI001	COVER SHEET
GI002	DRAWING INDEX
GI003	GENERAL NOTES AND ABBREVIATIONS
GI101	LIFE SAFETY PLAN -FIRST FLOOR

Civil

C001	LEGEND AND NOTES
C002	EXISTING CONDITIONS PLAN
C003	DEMOLITION
C004	LAYOUT PLAN
C005	GRADING PLAN & SITE / UTILITY PLAN
C006	SITE DETAILS
C007	EROSION & SEDIMENT CONTROL PLAN
C008	EROSION & SEDIMENT CONTROL DETAILS

Structural

SS001	GENERAL NOTES
SS002	GENERAL NOTES 2
SB101	FOUNDATION AND FIRST FLOOR
SF101	FRAMING PLAN -FIRST FLOOR INTERSTITIAL
SF102	FRAMING PLAN -ROOF
SS301	SECTIONS
SS302	SECTIONS
SS501	TYPICAL CONCRETE DETAILS
SS502	TYPICAL STEEL DETAILS
SS503	TYPICAL STEEL DETAILS 2
SS504	TYPICAL MASONRY DETAILS
SS601	COLUMN SCHEDULE

Architectural

AD001	ARCHITECTURAL DEMOLITION
AS101	FIRST FLOOR PLAN
AS102	FIRST FLOOR INTERSTITIAL PLAN
AS103	ROOF PLAN
AS201	EXTERIOR ELEVATIONS
AS202	BUILDING SECTIONS
AS203	EXTERIOR WALL DETAILS
AS204	EXTERIOR WALL DETAILS
AS205	EXTERIOR WALL DETAILS
AS206	SECTION DETAILS
AS301	REFLECTED CEILING PLAN -FIRST FLOOR
AS401	ENLARGED PLAN -FIRST FLOOR PM&R
AS402	ENLARGED PLAN -FIRST FLOOR INTERNET CAFE
AS403	DOOR SCHEDULE & DETAILS
AS404	FINISH SCHEDULE
AS405	FINISH FLOOR PLAN
AS406	WINDOW SCHEDULE & DETAILS
AS501	INTERIOR ELEVATIONS / ENLARGED PLAN
AS502	INTERIOR ELEVATIONS -FIRST FLOOR
AS503	INTERIOR ELEVATIONS -FIRST FLOOR
AS504	INTERIOR ELEVATIONS -FIRST FLOOR
AS601	PARTITION TYPES
AS602	MISCELLANEOUS DETAILS
AS603	COLUMN DETAILS
AS604	COLUMN DETAILS
AS605	EXTERIOR DETAILS
AI701	INTERIOR PLAN -FIRST FLOOR INTERNET CAFE
AI702	EQUIPMENT PLAN -COFFEE SHOP
AI703	EQUIPMENT PLAN -PM&R EXAM TREATMENT
AI704	INTERIOR DETAILS
AI705	INTERIOR DETAILS

Fire Protection

FX001	SPRINKLER -NOTES & SYMBOLS
FX101	SPRINKLER DEMOLITION -FIRST FLOOR
FX102	SPRINKLER NEW WORK -FIRST FLOOR
FX501	SPRINKLER -DETAILS
FA001	ALARM & DETECTION -NOTES & SYMBOLS
FA101	ALARM DEMOLITION -FIRST FLOOR
FA102	ALARM NEW WORK -FIRST FLOOR

Plumbing

PL001	PLUMBING NOTES SCHEDULES & DETAILS
PD100	PLUMBING DEMOLITION -FIRST FLOOR
PD101	PLUMBING DEMOLITION -FIRST FLOOR
PL100	PLUMBING NEW WORK -FOUNDATION PLAN
PL101	PLUMBING NEW WORK -FIRST FLOOR PLAN
PL102	PLUMBING NEW WORK -FIRST FLOOR INTERSTITIAL
PL103	PLUMBING NEW WORK -ROOF
PL301	PLUMBING NEW WORK -ENLARGED PLAN
PL501	PLUMBING DETAILS
PL601	RISER DIAGRAMS

Mechanical

MH001	MECHANICAL LEGEND, ABBREVIATIONS, & NOTES
MH101	FIRST FLOOR - MECHANICAL DEMOLITION
MH201	FIRST FLOOR - MECHANICAL NEW WORK
MH202	INTERSTITIAL SPACE - MECHANICAL NEW WORK
MH301	FIRST FLOOR PIPING PLAN - NEW WORK
MH401	MECHANICAL ROOM PART PLAN - NEW WORK
MH501	MECHANICAL DETAILS
MH502	MECHANICAL DETAILS
MH503	FLOW & CONTROL, DOAS DETAILS
MH601	AUTOMATIC CONTROLS-MECHANICAL
MH602	AUTOMATIC CONTROLS-MECHANICAL
MH603	VARIABLE REFRIGERANT FLOW - FLOW & CONTROLS
MH701	SCHEDULES - MECHANICAL

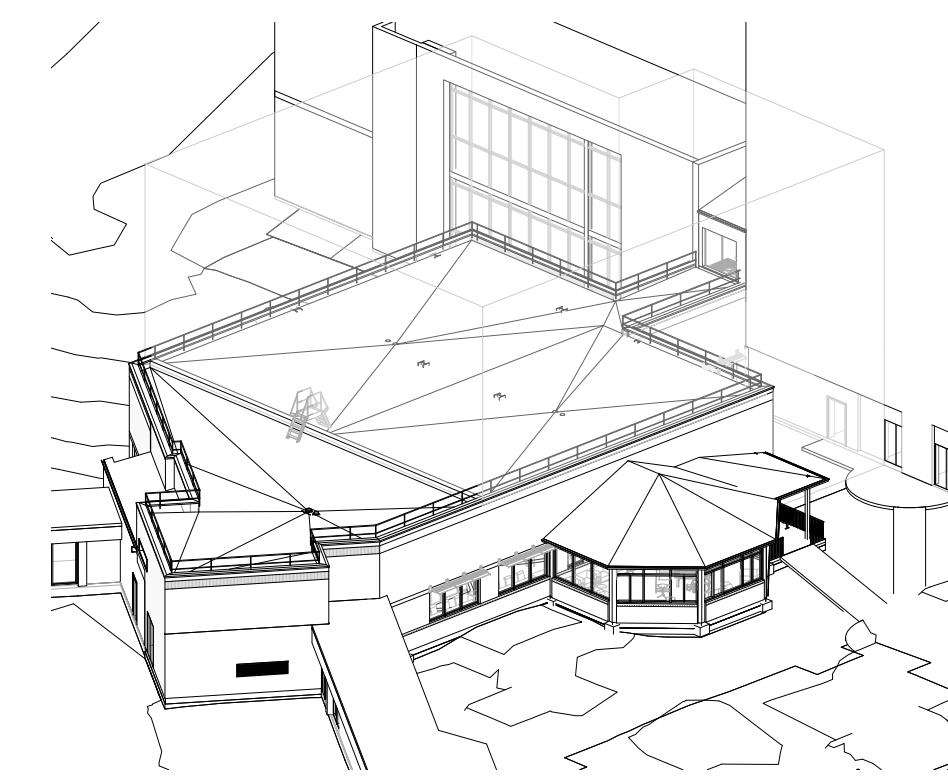
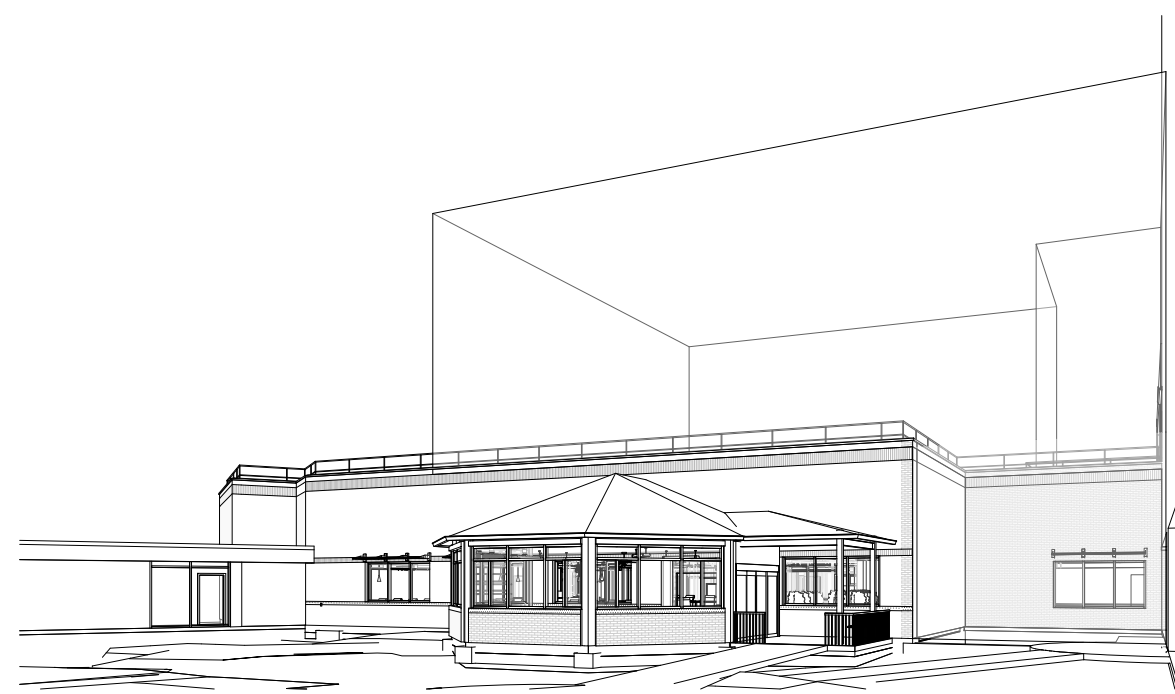
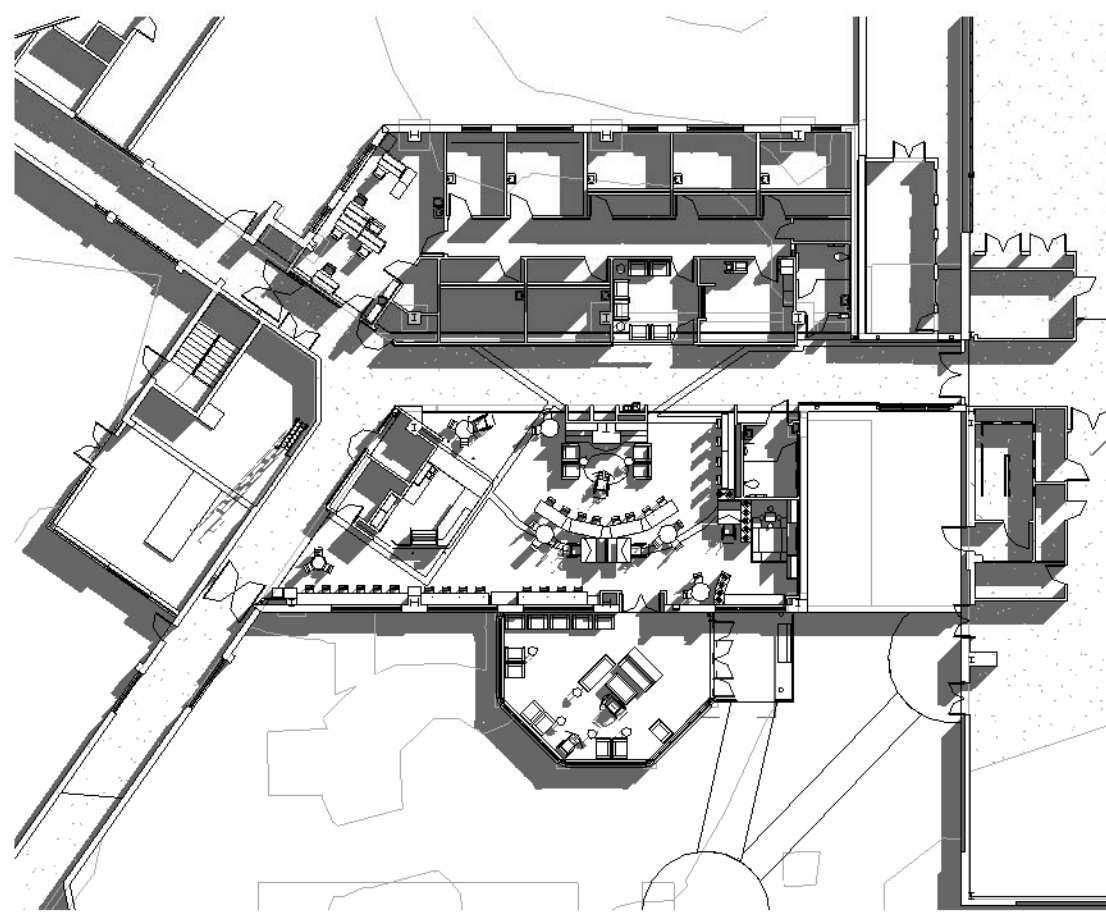
Electrical

ES001	LEGEND & CONVENTIONS
ES002	GENERAL NOTES & ABBREVIATIONS
ED101	FIRST FLOOR PLAN - ELECTRICAL DEMOLITION
ED102	ROOF PLAN - ELECTRICAL DEMOLITION
EL101	FIRST FLOOR PLAN - ELECTRICAL LIGHTING
EL102	FIRST FLOOR INTERSTITIAL PLAN - LIGHTING
EL301	ENLARGED CAFE PART PLAN - LIGHTING
EP101	FIRST FLOOR PLAN - ELECTRICAL POWER
EP102	FIRST FLOOR INTERSTITIAL PLAN - POWER
EP103	ROOF PLAN - POWER/LIGHTNING PROTECTION
EP301	ENLARGED PART PLANS - ELECTRICAL POWER
ES501	ELECTRICAL DETAILS
ES502	ELECTRICAL DETAILS
ES503	ELECTRICAL DETAILS
ES601	ELECTRICAL LUMINAIRE SCHEDULE
ES602	ELECTRICAL ONE-LINE DIAGRAM AND SCHEDULES
ES603	ELECTRICAL EQUIPMENT SCHEDULES
ES604	BRANCH CIRCUIT AND PANELBOARD SCHEDULES
ES605	ELECTRICAL PANELBOARD SCHEDULES
ES606	ELECTRICAL PANELBOARD SCHEDULES

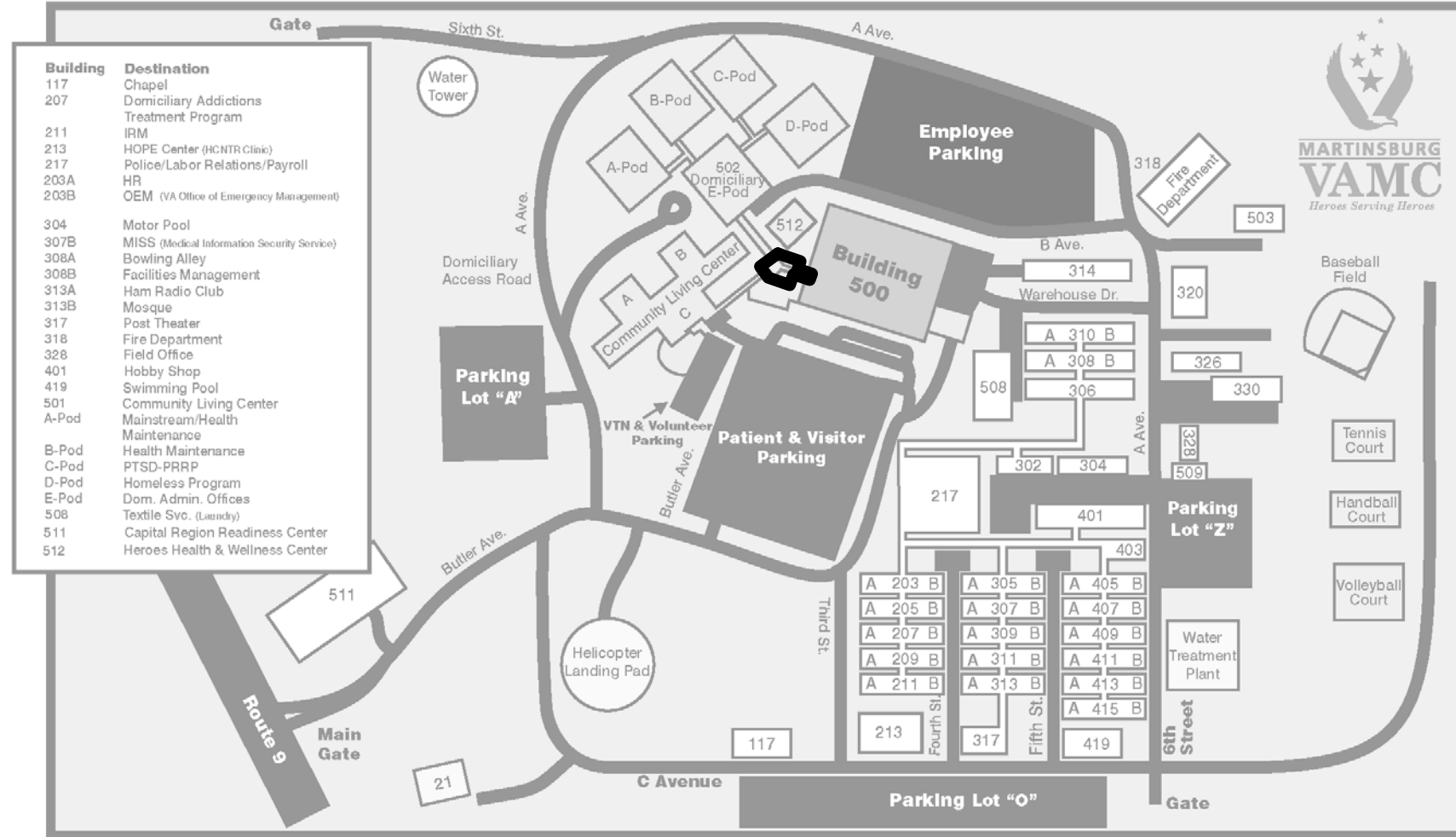
Telecommunication

T100	LEGEND AND NOTES
T101	GENERAL NOTES
T102	SITE PLAN
T200	FIRST FLOOR PLAN
T300	IT ROOM LAYOUT
T400	RISER DIAGRAMS
T500	GROUNDING DETAILS
T501	PATHWAY DETAILS

Building 500, Proposed Block F



Campus Map -Project Location



CONSULTANTS

Geotechnical:



SCHNABEL ENGINEERING
1901 SOUTH MAIN ST
SUITE 11
BLACKSBURG, VA 24060

Civil and Structural:



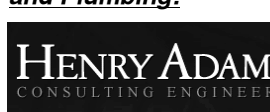
ALPHA CORPORATION
150 S LOUDOUN ST
SUITE 200
WINCHESTER, VA 22601

Fire Protection:



KOFFEL ASSOCIATES, INC.
8015 CENTRE PARK DRIVE
SUITE 200
COLUMBIA, MD 21045-2107

Mechanical, Electrical, and Plumbing:



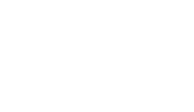
HENRY ADAMS
600 BALTIMORE AVENUE
BALTIMORE, MD 21204

Telecommunications:

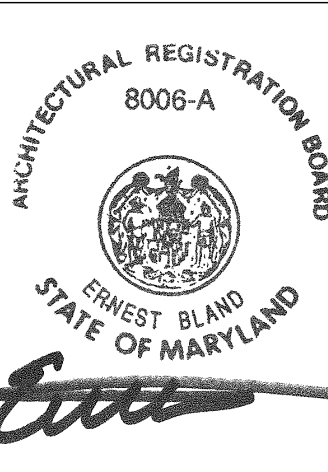


USSi CONSULTING
10440 LITTLE PATENT PKWY
SUITE 300
COLUMBIA, MD 21044

Transportation:



ROBERT L. SEYMOUR
162 THOMAS JOHNSON DR
FREDERICK, MD 21702



ARCHITECTS



802 SLIGO AVENUE, SILVER SPRING, MARYLAND 20910
TELEPHONE (301) 589-4811 FAX (301) 589-3810

Drawing Title
DRAWING INDEX

Approved: Project Director

Project Title
**Construct
Domiciliary Internet Cafe &
Rehab Medicine Expansion**

Location Martinsburg, WV

Date
16 April 2013

Checked
Checker
EBA

100% Bid Submission

Project Number
613-CSI-113

Building Number

Drawing Number

GI002

**Department
of Veterans
Affairs**



A

B

C

D

E

F

G

A

B

C

D

E

F

G

three inches = one foot
6"

one and one half inches = one foot
6"

one inch = one foot
6"

three quarters inch = one foot
6"

two and one half inches = one foot
6"

one eighth inch = one foot
6"

GENERAL NOTES

1. PRIOR TO THE COMMENCEMENT OF WORK THE CONTRACTOR SHALL VERIFY ALL EXISTING CONDITIONS.
2. ALL WORK SHALL BE PERFORMED IN ACCORDANCE WITH THE DRAWINGS AND SPECIFICATIONS FOR THIS PROJECT, AND IN ACCORDANCE WITH ALL APPLICABLE CODES, REGULATIONS AND REQUIREMENTS.
3. IF ANY HAZARDOUS MATERIALS IS FOUND AT THE SITE, CONTRACTOR IS TO CONFIRM EXISTENCE WITH THE COTR PRIOR TO COMMENCING ANY WORK. TO DISCUSS AND COORDINATE SITE EXTIRPATIONS (SEE SPECIFICATIONS RELATED TO ASBESTOS ABATEMENT).
4. REQUIRED DEMOLITION WORK SHALL NOT BE LIMITED TO THAT PORTION SHOWN ON PLANS ALONE, BUT SHALL INCLUDE ALL NECESSARY WORK AS ASSESSED BY THE CONTRACTOR AFTER VISITING THE SITE PRIOR TO BIDDING. THE CONTRACTOR SHALL GATHER ALL THE INFORMATION AND COORDINATE WITH THE NEW OR MODIFIED WORK AS INDICATED ON THE DRAWINGS.
5. CONTRACTOR TO PROVIDE FENCING AROUND WORKSITE, TEMPORARY BARRICADES, DIRECTIONAL SIGNS, DANGER SIGNS AND SIMILAR DEVICES AS NECESSARY FOR ADEQUATE PROTECTION OF THE PUBLIC AND WORKERS AND PREVENT DUST AND DEBRIS FROM AFFECTING ADJACENT AREAS. PROVIDE SUCH PROTECTION BEFORE DEMOLITION OPERATIONS AND UNTIL COMPLETION OF WORK.
6. CONTRACTOR SHALL PROVIDE ALL REQUIRED DEMOLITION WORK INDICATED ON THESE DRAWINGS. THE SCHEDULING OF DEMOLITION WORK SHALL BE COORDINATED WITH THE COTR PRIOR TO PERFORMING THE WORK.
7. CONTRACTOR SHALL CLEAN THE PROJECT SITE AT THE END OF EACH WORKING DAY.
8. THE CONTRACTOR SHALL COMPLETE THE PROJECT IN ITS ENTIRETY, WHETHER OR NOT ITEMS OF WORK ARE INDICATED ON THE DRAWINGS.
9. THE CONTRACTOR SHALL RESTORE, CORRECT AND REPAIR ALL INCIDENTAL DAMAGE DONE TO THE BUILDING OR ITS COMPONENTS DURING THE COURSE OF CONSTRUCTION. PROVIDE UNIT PRICING FOR INDIVIDUAL DAMAGED ITEMS.
10. THE CONTRACTOR SHALL CONFINE THE STORAGE OF ALL CONSTRUCTION MATERIALS, TOOLS AND EQUIPMENT, INCLUDING VEHICLES, TO AREAS DESIGNATED BY THE COTR.
11. GENERAL CONTRACTOR SHALL PROVIDE MATERIAL SAFETY DATA SHEETS FOR ALL CHEMICALS USED AT SITE FOR THE REVIEW OF THE COTR.
12. GENERAL CONTRACTOR SHALL MAINTAIN ACCESS TO THE LOADING AREA AT ALL TIMES DURING CONSTRUCTION.
13. WHERE EXISTING OPENINGS ARE REQUIRED TO BE FILLED, OPENINGS SHALL BE FILLED FLUSH ON EACH SIDE AND NEW FINISHES PROVIDED AND INSTALLED TO MATCH ADJACENT MATERIALS.
14. COORDINATE PENETRATIONS WITH LOCATION OF FRAMING MEMBERS IN FIELD PRIOR TO DRILLING OR SAW CUTTING.
15. THE FIRE RESISTIVE INTEGRITY OF THE ORIGINAL BUILDING, INCLUDING FIRE RATED SHAFTS, FLOOR AND CEILING ASSEMBLY, ETC. IS NOT BE COMPROMISED BY ANY ACTION OF THE CONTRACTOR. FIRE STOP AT ALL PENETRATIONS WHERE NEEDED.
16. ALL SURFACES ARE TO BE CLEANED AND NOT MARRED UPON DELIVERY OF THE FINISHED PROJECT TO THE SITE.
17. CONTRACTOR TO INFORM COTR OF ANY DISCREPANCIES PRIOR TO COMMENCEMENT OF AFFECTED WORK.
18. MATCH EXISTING MASONRY.
19. THE ARCHITECTURAL DRAWINGS ARE A PART OF LARGER SET OF DRAWINGS WHICH, WHEN COMPLETE, CONSISTS OF ALL DRAWINGS LISTED BY THE INDEX OF DRAWINGS. THE WORK DESCRIBED BY THE DRAWINGS OF ANY ONE DISCIPLINE MAY BE AFFECTED BY THE WORK DESCRIBED ON DRAWINGS OF ANOTHER DISCIPLINE. IT IS THE CONTRACTOR'S RESPONSIBILITY TO REVIEW AND COORDINATE THE WORK OF ALL SUB-COORDINATORS, TRADES, AND SUPPLIERS WITH ALL REQUIREMENTS OF THE CONTRACT DOCUMENTS BEFORE COMMENCING CONSTRUCTION, AND TO ASSURE THAT ALL PARTIES ARE AWARE OF ALL REQUIREMENTS, REGARDLESS OF WHERE THE REQUIREMENTS OCCUR IN THE CONTRACT DOCUMENTS, WHICH MIGHT AFFECT THE WORK OF THAT PARTY.

BUILDING DESIGN DATA

PROPERTY OWNER: VAMC MARTINSBURG

CODE JURISDICTION: VAMC MARTINSBURG, WEST VIRGINIA

BUILDING CODES: THE 2012 INTERNATIONAL BUILDING CODE
UNIFORM FEDERAL ACCESSIBILITY STANDARDS
(UFAS), NFPA 101 –LIFE SAFETY CODE 2012
FEDERAL HIGH PERFORMANCE AND SUSTAINABLE

BUILDINGS VA CRITERIA OF CONSTRUCTION CRITERIA BASE
(CBB) NFPA 13, STANDARD FOR INSTALLATION OF
EDITION.
SPRINKLER SYSTEMS, 2013 NFPA 72, NATIONAL FIRE ALARM AND SIGNALING
CODE, 2013 EDITION.

FEDERAL MANDATES: EXECUTIVE ORDERS, CODE OF FEDERAL
REGULATIONS (CFR),
U.S. CODES

GSA RECOMMENDED REGIONAL NON–ENFORCEABLE CODES:

1. WEST VIRGINIA CODE 29–3–5B AND PROVISIONS
1.1. NFPA 70, NATIONAL ELECTRIC CODE/2008
1.2. THE 2009 INTERNATIONAL BUILDING CODE WITH EXCEPTIONS
1.3. THE 2009 EDITION OF THE INTERNATIONAL PLUMBING CODE
1.4. THE 2009 EDITION OF THE INTERNATIONAL MECHANICAL CODE
1.5. THE 2009 EDITION OF THE INTERNATIONAL FUEL GAS CODE WITH
EXCEPTION
1.6. THE 2003 EDITION OF THE INTERNATIONAL ENERGY CONSERVATION CODE
1.7. THE 2003 ICC/ANSI STANDARDS FOR ACCESSIBILITY AND USABLE
BUILDINGS AND FACILITIES
1.8. THE 2009 EDITION OF THE INTERNATIONAL EXISTING BUILDING CODE WITH
EXCEPTION

2. THE STATE BUILDING CODE CITY OF MARTINSBURG INSERTS

USE GROUP: B (BUSINESS)

CONSTRUCTION CLASSIFICATION: TYPE 1A

SPRINKLERS: FULLY SPRINKLERS

DESIGN OCCUPANCY LOAD: 208

SCOPE OF WORK: DEMOLITION, RENOVATION AND NEW ADDITION
TO EXISTING STRUCTURE.

ABBREVIATIONS

⊙	AT	EF	EXHAUST FAN	LAM	LAMINATE	R	RISER
ACT	ACOUSTIC CEILING TILE	EL	ELEVATION	LAV	LAVATORY	RA	RETURN AIR
ADD	ADDENDUM	ELEC	ELECTRIC(AL)	LBL	LABEL LEFT	RAD, R	RADIUS
ADH	ADHESIVE	ELEV	ELEVATOR	LH	LEFT HAND	RCP	REFLECTED CEILING PLAN
ADJ	ADJACENT	EMR	ELEVATOR MACHINE ROOM	LF	LINEAR FEET	REF	REFERENCE, REFRIGERATOR
AFF	ABOVE FINISHED FLOOR	EJ	EXPANSION JOINT	LG	LENGTH	REINF	REINFORCE(D)(ING)
ALT	ALTERNATE	ENCL	ENCLOSE(URE)	LOC	LOCATION	REQ	REQUIRED
ALUM	ALUMINUM	EQ	EQUAL			RES	RESILIENT
ARCH	ARCHITECT(URAL)	EQUIP	EQUIPMENT			REV	REVISION
		EX	EXISTING	MACH	MACHINE	RH	RIGHT HAND
BARR	BARRIER	EXP	EXPOSED	MANF	MANUFACTURER	RM	ROOM
BD	BOARD	EXT	EXTERIOR	MAS	MASONRY	RO	ROUGH OPENING
BHD	BULKHEAD			MAX	MAXIMUM	RT	RUBBER TILE
BLDG	BUILDING	FD	FLOOR DRAIN	MECH	MECHANICAL	SC	SOLID CORE
BLK	BLOCK(ING)	FEC	FIRE EXTINGUISHER CABINET	MH	MANHOLE	SCWD	SOLID CORE WOOD
BLM	BEAM	FF	FINISHED FLOOR	MIC	MICROWAVE	SCHD	SCHEDULE
BO	BOTTOM	FIN	FINISH(ED)	MIN	MINIMUM	SCPLAM	SOLID CORE PLASTIC LAMINATE
B/O	BOTTOM OF	FLASH	FLASHING	MISC	MISCELLANEOUS	SH SHT	SHEET
BTWN	BETWEEN	FLR	FLOOR(ING)	MO	MASONRY OPENING	SP	SIMILAR
BU	BUILT–UP	FO	FLOOR OUTLET	MOV	MOVABLE	SP	STANDPIPE
		FOS	FACE OF STUD	MUL	MULLION	SPEC	SPECIFY(ED), SPECIFICATION
CAB	CABINET	FR	FIRE RATED(ING)	MT	MARBLE TILE	SO	SQUARE
CG	CORNER GUARD	FRT	FIRE RETARDED TREATED	MTD	MOUNTED	SS	STAINLESS STEEL
CJ	CONTROL JOINT	FUR	FURR(ING)	MTG	MOUNTING	STD	STANDARD
CL		FVC	FIRE VALVE CABINET	MTL	METAL	STL	STEEL
CL	CLOSET					STOR, ST	STORAGE
CMU	CONCRETE MASONRY UNIT	GA	GAUGE	NA	NOT APPLICABLE	STRUC	STRUCTURAL
COL	COLUMN	GALV	GALVANIZED	NIC	NOT IN CONTRACT	SUSP	SUSPENDED
COMB	COMBINATION	GB	GRAB BAR	NO	NUMBER	SYS	SYSTEM
CO	COMPANY	GL	GLASS	NOM	NOMINAL		
C/O	CLEAN OUT	GEN	GENERAL	NTS	NOT TO SCALE	T	TREAD
CONC	CONCRETE	GWP	GYPSPUM WALL BOARD	OA	OVERALL	TEL	TELEPHONE
CONF	CONFERENCE			OC	ON CENTER	TERR	TERRAZZO
CONST	CONSTRUCTION	H	HEIGHT OR HIGH	OD	OUTSIDE DIAMETER	T & G	TONGUE & GROOVE
CONT	CONTINUOUS	HB	HOSE BIB	OFS	OFFICE	THK	THICK(NESS)
CONTR	CONTRACTOR	HC	HOLLOW CORE	OH	OVERHEAD	THRES	THRESHOLD
COORD	COORDINATE	HCP	HANDICAPPED	OPG	OPENING	TLT	TOILET
CORR	CORRIDOR	HDR	HANDRAIL	OPP	OPPOSITE	T/O	TOP OF
CPT	CARPET	HM	HOLLOW METAL			TYP	TYPICAL
CT	CERAMIC TILE	HORZ	HORIZONTAL	PART'N	PARTITION	TS	TOP OF SHELF
CTR	CENTER	HP	HIGH POINT	PBD	PARTIAL BOARD		
		HPL	HIGH PRESSURE LAMINATE	PC	PRECAST CONCRETE	UC	UNDERCUT
DBL	DOUBLE	HR	HOUR(S)	PERF	PERFORATED	UL	UNDERWRITER'S LABORATORY
DEMO	DEMOLITION	H & V	HORIZONTAL & VERTICAL	PL, PLAM	PLASTIC LAMINATE	UNF	UNFINISHED
DIA	DIAMETER			PLUMB	PLUMBING	UNO	UNLESS OTHERWISE NOTED
DIAG	DIAGONAL	ID	INSIDE DIAMETER	PLAS	PLASTER		
DIM	DIMENSION	INCL	INCLUDE(D)(ING)	PNL	PANEL	VB	VINYL BASE
DISP	DISPENSER	INSUL	INSULATE(D)(ION)	PR	PAIR	VCT	VINYL COMPOSITION TILE
DIV	DIVISION	INT	INTERIOR	PREFAB	PREFABRICATED	VERT	VERTICAL
DF	DRINKING FOUNTAIN			PREP	PREPARATION	VIF	VERIFY IN FIELD
DN	DOWN	JC	JANITOR'S CLOSET	PROJ	PROJECTED(ION)	VWC	VINYL WALLCOVERING
DR	DOOR	JT	JOINT	PT	PRESSURE TREATED		
DS	DOWNSPOUT	KD	KNOCK DOWN	PTD, P	PAINTED	W	WIDTH
DTL	DETAIL	KIT	KITCHEN	PTN	PARTITION	W//	WITH
DWR	DRAWER	KO	KNOCK OUT	PWD	PLYWOOD	W/O	WITHOUT
DWG(S)	DRAWING(S)			QT	QUARRY TILE	WC	WALLCOVERING
						WD	WOOD

100% Bid Submission

Revisions

Date

CONSULTANTS

Geotechnical:

Civil and Structural:

Fire Protection:

Mechanical, Electrical, and Plumbing:

Telecommunications:

Transportation:

SCHNABEL ENGINEERING
1901 SOUTH MAIN ST
SUITE 11
BLACKSBURG, VA 24060

ALPHA CORPORATION
150 S LOUDOUN ST
SUITE 200
WINCHESTER, VA 22601

KOFFEL ASSOCIATES, INC.
8015 CENTRE PARK DRIVE
SUITE 200
COLUMBIA, MD 21045-2107

HENRY ADAMS
600 BALTIMORE AVENUE
BALTIMORE, MD 21204

USSI CONSULTING
10440 LITTLE PATUXENT PKWY
SUITE 300
COLUMBIA, MD 21044

ROBERT L SEYMOUR
162 THOMAS JOHNSON DR
FREDERICK, MD 21702

ARCHITECTS

ERNEST BLAND ASSOCIATES, P.C.
TECHNICAL FACILITIES DESIGN

802 SLIGO AVENUE, SILVER SPRING, MARYLAND 20910
TELEPHONE (301) 589-4811 FAX (301) 589-3810

Drawing Title

GENERAL NOTES AND ABBREVIATIONS

Approved: Project Director

Project Title

Construct
Domiciliary Internet Cafe &
Rehab Medicine Expansion

Location Martinsburg, WV

Date

16 April 2013

Checked

Checker

Drawn

Author

Project Number

613-CSI-113

Building Number

Drawing Number

GI003

Department of Veterans Affairs

1

2

3

4

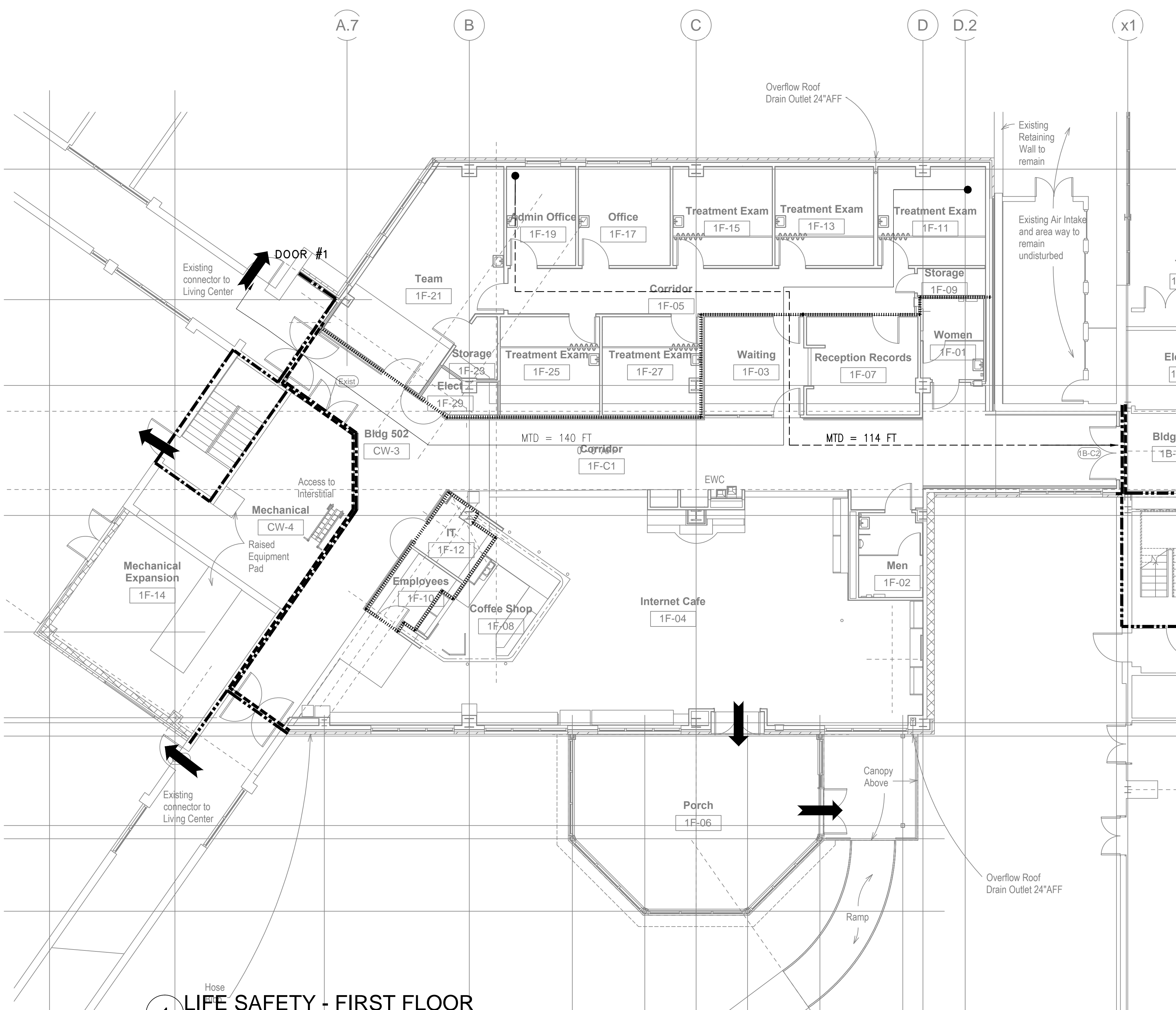
5

6

6

8

three eighths inch = one foot
one half inch = one foot
three quarters inch = one foot
one inch = one foot
one and one half inches = one foot
two inches = one foot
three inches = one foot
four inches = one foot
five inches = one foot
six inches = one foot
seven inches = one foot
eight inches = one foot
nine inches = one foot
ten inches = one foot
eleven inches = one foot
twelve inches = one foot
thirteen inches = one foot
fourteen inches = one foot
fifteen inches = one foot
sixteen inches = one foot
seventeen inches = one foot
eighteen inches = one foot
nineteen inches = one foot
twenty inches = one foot
twenty one inches = one foot
twenty two inches = one foot
twenty three inches = one foot
twenty four inches = one foot
twenty five inches = one foot
twenty six inches = one foot
twenty seven inches = one foot
twenty eight inches = one foot
twenty nine inches = one foot
thirty inches = one foot
thirty one inches = one foot
thirty two inches = one foot
thirty three inches = one foot
thirty four inches = one foot
thirty five inches = one foot
thirty six inches = one foot
thirty seven inches = one foot
thirty eight inches = one foot
thirty nine inches = one foot
forty inches = one foot
forty one inches = one foot
forty two inches = one foot
forty three inches = one foot
forty four inches = one foot
forty five inches = one foot
forty six inches = one foot
forty seven inches = one foot
forty eight inches = one foot
forty nine inches = one foot
fifty inches = one foot
fifty one inches = one foot
fifty two inches = one foot
fifty three inches = one foot
fifty four inches = one foot
fifty five inches = one foot
fifty six inches = one foot
fifty seven inches = one foot
fifty eight inches = one foot
fifty nine inches = one foot
sixty inches = one foot
sixty one inches = one foot
sixty two inches = one foot
sixty three inches = one foot
sixty four inches = one foot
sixty five inches = one foot
sixty six inches = one foot
sixty seven inches = one foot
sixty eight inches = one foot
sixty nine inches = one foot
seventy inches = one foot
seventy one inches = one foot
seventy two inches = one foot
seventy three inches = one foot
seventy four inches = one foot
seventy five inches = one foot
seventy six inches = one foot
seventy seven inches = one foot
seventy eight inches = one foot
seventy nine inches = one foot
eighty inches = one foot
eighty one inches = one foot
eighty two inches = one foot
eighty three inches = one foot
eighty four inches = one foot
eighty five inches = one foot
eighty six inches = one foot
eighty seven inches = one foot
eighty eight inches = one foot
eighty nine inches = one foot
ninety inches = one foot
ninety one inches = one foot
ninety two inches = one foot
ninety three inches = one foot
ninety four inches = one foot
ninety five inches = one foot
ninety six inches = one foot
ninety seven inches = one foot
ninety eight inches = one foot
ninety nine inches = one foot
one hundred inches = one foot



1 LIFE SAFETY - FIRST FLOOR
Scale: 1/8"=1'-0"

LIFE SAFETY LEGEND

2 HR FIRE BARRIER
(1-1/2 HOUR DOORS)

1 HR FIRE BARRIER
(3/4 HOUR DOORS)

SMOKE BARRIER

SMOKE RESISTIVE

HAZARDOUS AREA

EXIT

XX' MTD

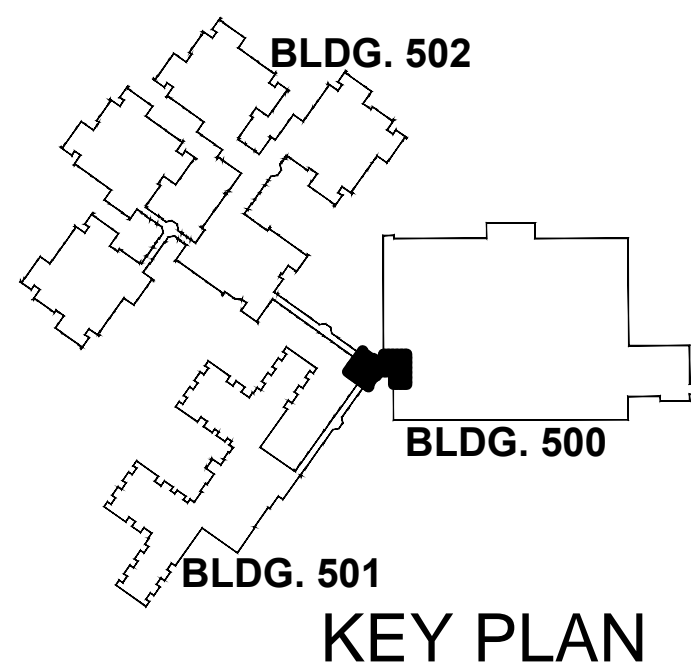
MTD TO EXIT

XX' MTD

MTD TO SMOKE BARRIER

EXIT CAPACITY SUMMARY						
Floor 1	DOOR	STAIR WIDTH (in.)	DOOR WIDTH (Clear in.)	CAPACITY FACTOR (in./person)	EXIT CAPACITY PROVIDED (people)	EXIT CAPACITY REQUIRED (people)
	Porch	N/A	32	0.2	160	100
	Door 1	N/A	32	0.2	160	120
	TOTAL CAPACITY PROVIDED (people)				320	
	TOTAL CAPACITY REQUIRED/TOTAL OCCUPANT LOAD (people)					220

OCCUPANT LOAD SUMMARY				
Floor 1	USE	AREA (sq ft)	OCCUPANT LOAD FACTOR (sq ft/person)	OCCUPANT LOAD (People)
	Business/Outpatient Treatment	3063	100	31
	Assembly (Team, Waiting, Internet Café, Coffee Shop)	2846	15	190
	Industrial/Storage	883	300	3
	TOTAL AREA	6792	TOTAL OCCUPANT LOAD	224



CONSULTANTS

Geotechnical:

SCHNABEL ENGINEERING
1901 SOUTH MAIN ST
SUITE 11
BLACKSBURG, VA 24060

Civil and Structural:

ALPHA CORPORATION
150 S LOUDOUN ST
SUITE 200
WINCHESTER, VA 22601

Fire Protection:

KOFFEL ASSOCIATES, INC.
8815 CENTRE PARK DRIVE
SUITE 200
COLUMBIA, MD 21045-2107

Mechanical, Electrical, and Plumbing:

HENRY ADAMS
600 BALTIMORE AVENUE
BALTIMORE, MD 21204

Telecommunications:

USSI CONSULTING
10440 LITTLE PATUXENT PKWY
SUITE 300
COLUMBIA, MD 21044

Transportation:

ROBERT L. SEYMOUR
182 THOMAS JOHNSON DR
FREDERICK, MD 21702

ARCHITECTS

ERNEST BLAND ASSOCIATES, P.C.
TECHNICAL FACILITIES DESIGN
802 SLIGO AVENUE, SILVER SPRING, MARYLAND 20910
TELEPHONE (301) 589-4811 FAX (301) 589-3810

Drawing Title

Life Safety Plans - First Floor

Approved: Project Director

Project Title

Construct
Domiciliary Internet Cafe & Rehab Medicine Expansion

Location

Date

16 April 2013

Checked

MJA

Drawn

AMK

Project Number

613-CSI-113

Building Number

Drawing Number

GI-101

100% Bid Submission

Department of Veterans Affairs