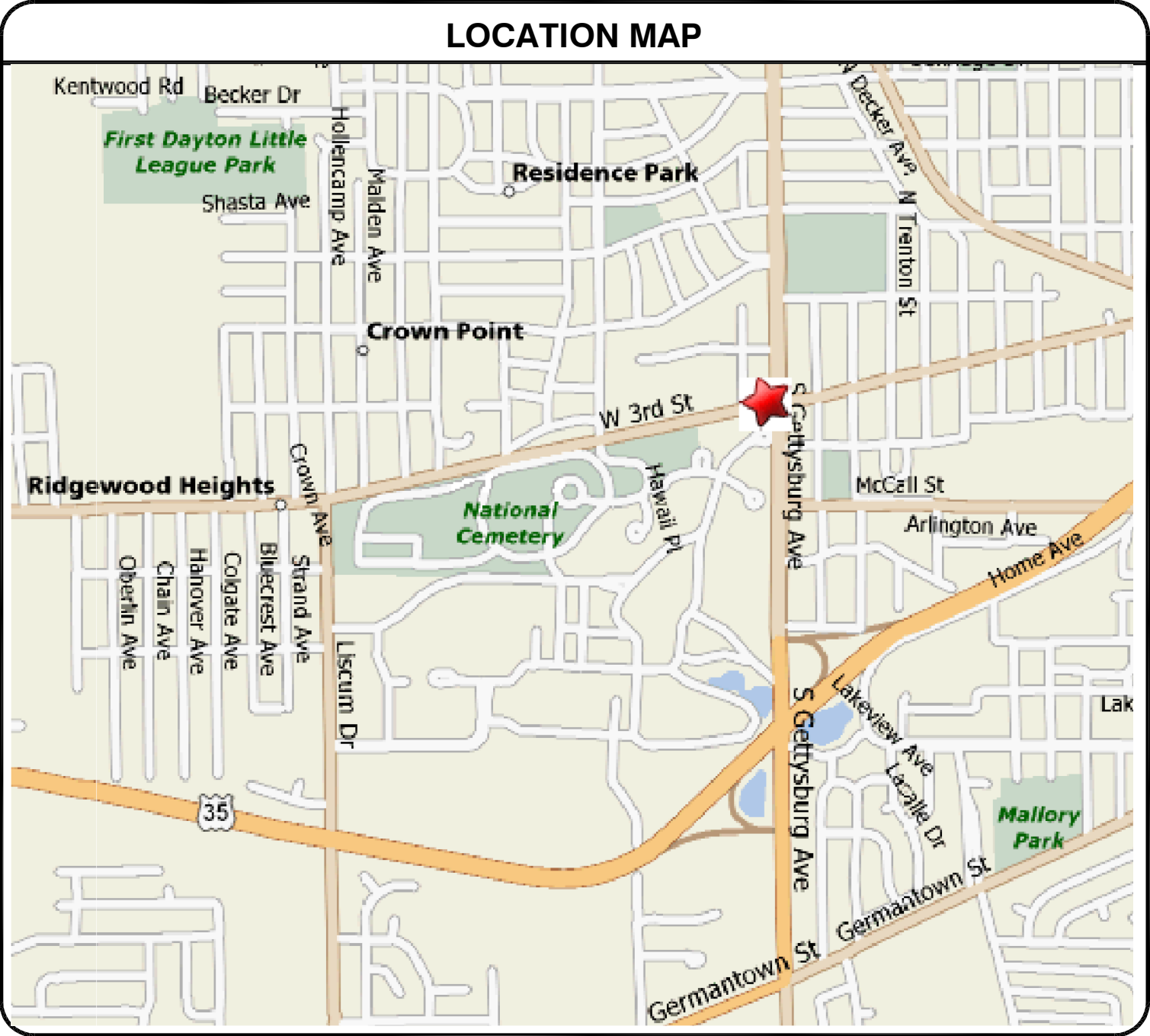


Project Number : 552-13-301
MODERNIZE HVAC, B-115

PREPARED FOR:
DEPARTMENT OF VETERANS AFFAIRS
DAYTON VAMC
4100 WEST THIRD STREET
DAYTON, OH 45428

SCHEDULE OF DRAWINGS	
DRAWING NO.	TITLE
0	TITLE SHEET
ARCHITECTURAL	
A0	EXISTING PHOTOS, WALL TYPES, DETAILS
A1	FLOOR PLANS
A2	EXISTING WINDOW SCHEDULE
HVAC	
M00	HVAC SCHEDULES AND DETAILS
M01	HVAC SCHEDULES AND DETAILS
M02	HVAC SCHEDULES AND DETAILS
M03	HVAC SCHEDULES AND DETAILS
M1	GROUND FLOOR HVAC DEMOLITION PLAN
M2	FIRST FLOOR HVAC DEMOLITION PLAN
M3	SECOND FLOOR HVAC DEMOLITION PLAN
M4	GROUND FLOOR HVAC DUCT AND PIPING PLAN
M5	FIRST FLOOR HVAC DUCT AND PIPING PLAN
M6	SECOND FLOOR HVAC DUCT AND PIPING PLAN
M7	ENLARGED HVAC DUCT AND PIPING PLANS
M8	HVAC CONTROLS
ELECTRICAL	
E0	ELECTRICAL SCHEDULES AND DETAILS
E1	GROUND FLOOR ELECTRICAL DEMOLITION AND NEW WORK PLANS
E2	FIRST FLOOR ELECTRICAL DEMOLITION AND NEW WORK PLANS
E3	SECOND FLOOR ELECTRICAL DEMOLITION AND NEW WORK PLANS



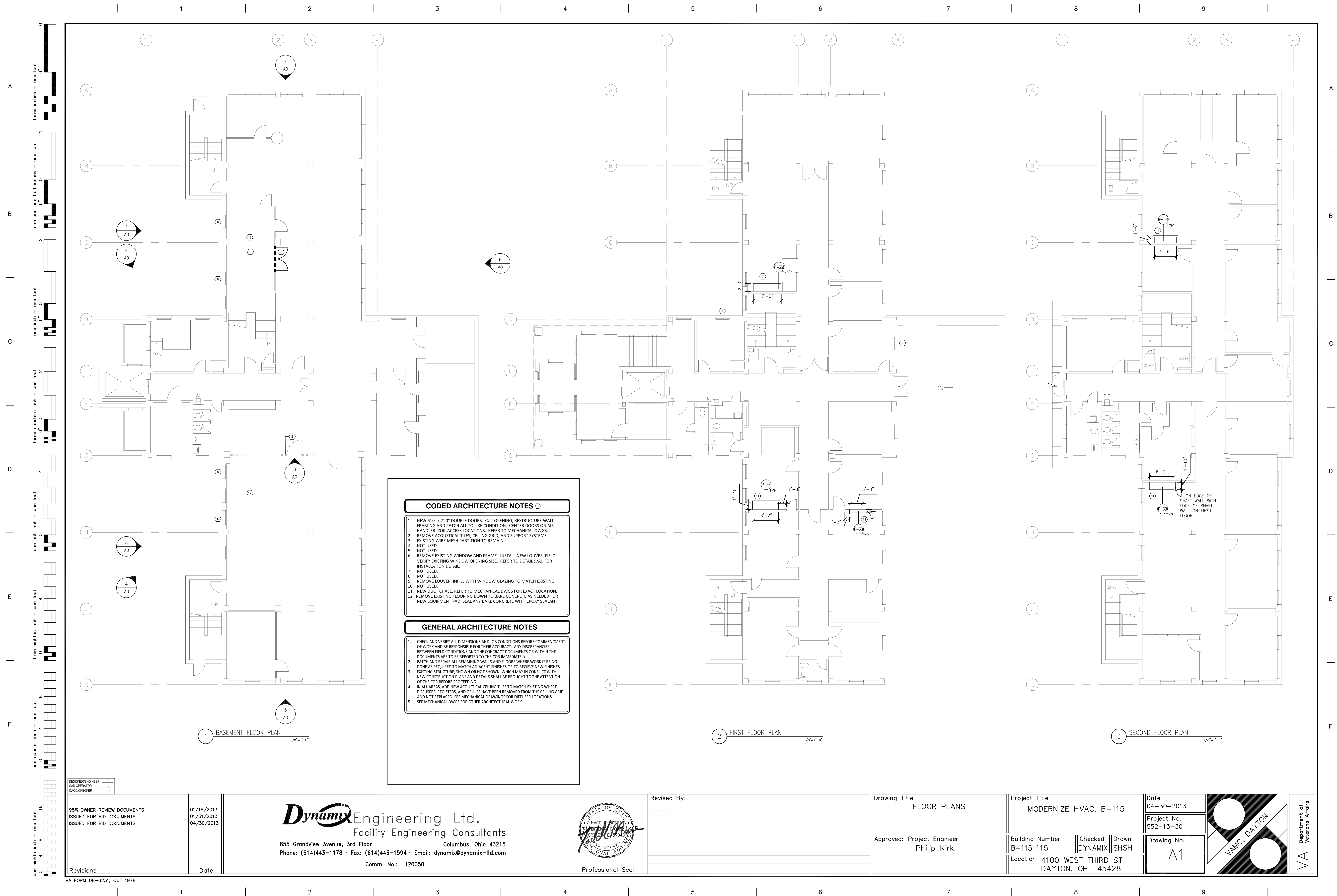
<div>DESIGNER/ENGINEER <u>SH</u> CAD OPERATOR <u>SH</u> CHECKER <u>SS</u></div>		95% OWNER REVIEW DOCUMENTS ISSUED FOR BID DOCUMENTS ISSUED FOR BID DOCUMENTS		01/18/2013 01/31/2013 04/30/2013		<div>Dynamix Engineering Ltd. Facility Engineering Consultants 855 Grandview Avenue, 3rd Floor Columbus, Ohio 43215 Phone: (614)443-1178 · Fax: (614)443-1594 · Email: dynamix@dynamix-llc.com Comm. No.: 120050</div>		Professional Seal		Revised By:		Drawing Title TITLE SHEET		Project Title MODERNIZE HVAC, B-115		Date 04-30-2013 Project No. 552-13-301 Drawing No. 0		<div>VAMC, DAYTON</div>		Department of Veterans Affairs	
Revisions		Date										Approved: Project Engineer Philip Kirk		Building Number B-115		Checked DYNAMIX		Drawn SH			
												Approved: Chief Engineer Gary Abreu		Location 4100 WEST THIRD ST DAYTON, OH 45428							



TYPE	RATING	FIRE/STC	DESCRIPTION	CONSTRUCTION
P-1A		(FIRE) (NONE)	ONE LAYER 5/8" TYPE "X" GYPSUM WALLBOARD EACH SIDE OF METAL STUDS @ 16" OC WITH 3 1/2" ACOUSTICAL INSULATION FRICTION FIT IN STUD SPACE	
P-1B		(STC) (NONE)		
P-1C		(45-49) GA FILE	A- 2-1/2" STUD B- 3-5/8" STUD	
P-1D		NO WP1072	C- 4" STUD D- 6" STUD	
TYPE	RATING	FIRE/STC	DESCRIPTION	CONSTRUCTION
P-2A		(FIRE) UL U465	ONE LAYER 5/8" TYPE "X" GYPSUM WALLBOARD EACH SIDE OF METAL STUDS 16" OC WITH 3 1/2" ACOUSTICAL INSULATION FRICTION FIT IN STUD SPACE	
P-2B	1 HR	(STC)		
P-2C		(45-49) GA FILE	A- 2-1/2" STUD B- 3-5/8" STUD	
P-2D		NO WP1081	C- 4" STUD D- 6" STUD	
TYPE	RATING	FIRE/STC	DESCRIPTION	CONSTRUCTION
P-3A		(FIRE)	ONE LAYER 5/8" TYPE "X" WATER RESISTANT GYPSUM WALLBOARD ON METAL STUDS 16" OC WITH 3 1/2" ACOUSTICAL INSULATION FRICTION FIT IN STUD SPACE	
P-3B		(NONE)		
P-3C				
P-3D				



Department of



FOR REFERENCE.
NOT TO SCALE

Typical Wood Window Details.
Scale 3/4" = 1'-0"
Section No. 1

Detail of Wood Casement Window No. 26.
Scale 3/4" = 1'-0"
Section No. 2

Window and Louvre Elevations
Scale 1/2" = 1'-0"

Suspended Ceiling & Furring Condition
Where Horizontal Ducts & Pipe Occur Overhead

Section Thru Tread

Plan at Newels

Tread & Riser Section

Elevation of Newel Railing

Section Urinal

Counter in Lobby
Scale 3/4" = 1'-0"

Marble Toilet Stool
Scale 3/4" = 1'-0"

Terraizo Base Tile Floor-Base & Wainscot

Plastered Wall Exposed Wall Cement Base

Wall Tile Partition Tile Interlocking Tile
Scale 1/2" = 1'-0"

Recess for Drinking Fountain
Scale 3/4" = 1'-0"

VETERANS ADMINISTRATION
WASHINGTON, D.C.
APPROVED: Frank D. Hines, Administrator
Thomas J. Davis, Assistant Administrator
Chief, Technical Division

SCHEDULE OF FINISHES			
NR	FLOOR	BASF. WAINSCOT	CEILINGS
1	CEMENT	CEMENT	PLASTERED
2	CEMENT	CEMENT	PLASTERED ON CONCRETE CONSTRUCTION
3	CEMENT	CEMENT	CEMENT PLASTER
4	CEMENT	CEMENT	CEMENT PLASTER
5	CEMENT	CEMENT	CEMENT PLASTER
6	CEMENT	CEMENT	CEMENT PLASTER
7	CEMENT	CEMENT	CEMENT PLASTER
8	CEMENT	CEMENT	CEMENT PLASTER
9	CEMENT	CEMENT	CEMENT PLASTER
10	CEMENT	CEMENT	CEMENT PLASTER
11	CEMENT	CEMENT	CEMENT PLASTER
12	CEMENT	CEMENT	CEMENT PLASTER
13	CEMENT	CEMENT	CEMENT PLASTER
14	CEMENT	CEMENT	CEMENT PLASTER
15	CEMENT	CEMENT	CEMENT PLASTER
16	CEMENT	CEMENT	CEMENT PLASTER
17	CEMENT	CEMENT	CEMENT PLASTER
18	CEMENT	CEMENT	CEMENT PLASTER
19	CEMENT	CEMENT	CEMENT PLASTER
20	CEMENT	CEMENT	CEMENT PLASTER
21	CEMENT	CEMENT	CEMENT PLASTER
22	CEMENT	CEMENT	CEMENT PLASTER
23	CEMENT	CEMENT	CEMENT PLASTER
24	CEMENT	CEMENT	CEMENT PLASTER
25	CEMENT	CEMENT	CEMENT PLASTER
26	CEMENT	CEMENT	CEMENT PLASTER
27	CEMENT	CEMENT	CEMENT PLASTER
28	CEMENT	CEMENT	CEMENT PLASTER
29	CEMENT	CEMENT	CEMENT PLASTER
30	CEMENT	CEMENT	CEMENT PLASTER
31	CEMENT	CEMENT	CEMENT PLASTER
32	CEMENT	CEMENT	CEMENT PLASTER