

three inches = one foot
one and one half inches = one foot
one inch = one foot
three quarters inch = one foot
one half inch = one foot
three eighths inch = one foot
one quarter inch = one foot
one eighth inch = one foot

EXISTING PANEL: 115-1-03A-2F									
CONN. LOAD: EX-13.3 KVA		DEMAND LOAD: EX-10.6 KVA (EX-29.4A)							
MAINS: 225A MLO		VOLTAGE: 120/208 V, 3 Ø, 4 W							
LOCATION: --		MOUNTING: SURFACE							
REMARKS	KVA	BKR	CKT. NO. AND PH.	BKR	KVA	REMARKS			
EXISTING	60/3	1 A 2	20/2			EX. LOAD			
	3 B 4					EX. LOAD			
	5 C 6		20/2			EX. LOAD			
SPARE	30/2	7 A 8				EX. LOAD			
	9 B 10		20/2			EX. LOAD			
EXISTING	20/1	11 C 12				EX. LOAD			
EXISTING	20/1	13 A 14	20/1			EX. LOAD			
EXISTING	20/1	15 B 16	20/1			EX. LOAD			
EXISTING	20/1	17 C 18	20/1			SPARE			
EXISTING	20/1	19 A 20	20/1			SPARE			
EXISTING	20/1	21 B 22	20/1			EX. LOAD			
EXISTING	20/1	23 C 24	20/1			EX. LOAD			
EXISTING	20/1	25 A 26	20/1			EX. LOAD			
EXISTING	20/1	27 B 28	20/1			EX. LOAD			
VAV XFMR (RE)	1.1-M	20/1	29 C 30	20/1		EX. LOAD			
EXISTING	20/1	31 A 32	20/1			EX. LOAD			
EXISTING	20/1	33 B 34	30/2			SPARE			
SPARE	30/3	35 C 36				SPARE			
	37 A 38					SPARE			
	39 B 40					SPARE			
CP-1(REUSE)	1.1-M	20/1	41 C 42			SPARE			

LEGEND: L-LIGHTING, R-RECEPTACLES, M-MOTORS, H-RESISTANCE HEAT, C-CONTROL, MLO- MAIN LUGS ONLY, DSL- DOUBLE SET OF LUGS, MB-MAIN BREAKER, LC-LOCKING CLIP, SFL-SUB FEED LUGS

EXISTING PANEL: 115-1-03A-2E									
CONN. LOAD: 20 KVA		DEMAND LOAD: 16 KVA (44 A)							
MAINS: 225A MLO		VOLTAGE: 120/208 V, 3 Ø, 4 W							
LOCATION: --		MOUNTING: FLUSH							
REMARKS	KVA	BKR	CKT. NO. AND PH.	BKR	KVA	REMARKS			
EX. LOAD	8-R	20/1	1 A 2	20/1	8-R	EX. LOAD			
EX. LOAD	8-R	20/1	3 B 4	20/1	1.2-R	EX. LOAD			
EX. LOAD	8-R	20/1	5 C 6	20/1	1.2-R	EX. LOAD			
EX. LOAD	1.1-R	20/1	7 A 8	20/1	1.4-L	EX. LOAD			
EX. LOAD	1.1-L	20/1	9 B 10	20/1	1.4-R	EX. LOAD			
EX. LOAD	1.2-L	20/1	11 C 12	20/1	1.5-L/R	EX. LOAD			
EX. LOAD	8-L	20/1	13 A 14	20/1	8-R/M	EX. LOAD			
EX. LOAD	1.4-L	20/1	15 B 16	20/1	9-L/R	EX. LOAD			
EX. EXH FANS	5-M	20/1	17 C 18	20/1	1.5-M	SPARE			
SPARE		20/1	19 A 20	20/1	SPARE				
SPARE		20/1	21 B 22	20/1	SPARE				
SPACE		23 C 24	20/1	8-M	HEAT TRACE				
SPACE		25 A 26	GF	30mA(NEW)					
SPACE		27 B 28							
SPACE		29 C 30							
SPACE		31 A 32							
SPACE		33 B 34							
SPACE		35 C 36							
SPACE		37 A 38							
SPACE		39 B 40							
SPACE		41 C 42							

LEGEND: L-LIGHTING, R-RECEPTACLES, M-MOTORS, H-RESISTANCE HEAT, C-CONTROL, MLO- MAIN LUGS ONLY, DSL- DOUBLE SET OF LUGS, MB-MAIN BREAKER, LC-LOCKING CLIP, SFL-SUB FEED LUGS

EXISTING PANEL: 115-1-03A-2C									
CONN. LOAD: 23.5 KVA		DEMAND LOAD: 20.0 KVA (55.5A)							
MAINS: 225A MLO		VOLTAGE: 120/208 V, 3 Ø, 4 W							
LOCATION: --		MOUNTING: FLUSH							
REMARKS	KVA	BKR	CKT. NO. AND PH.	BKR	KVA	REMARKS			
EX. LOAD	8-R	20/1	1 A 2	20/1	1.4-R	EX. LOAD			
EX. LOAD	6-R	20/1	3 B 4	20/1	6-R	EX. LOAD			
EX. LOAD	6-R	20/1	5 C 6	20/1	1.2-R	EX. LOAD			
EX. LOAD	8-L/R	20/1	7 A 8	20/1	4-L	EX. LOAD			
EX. LOAD	1.0-R	20/1	9 B 10	20/1	1.2-L	EX. LOAD			
EX DAMPR CTRL	1.0-M	20/1	11 C 12	20/1	1.2-L	EX. LOAD			
SPARE		20/1	13 A 14	20/1	1.0-L	EX. LOAD			
SPARE		20/1	15 B 16	20/1	SPARE				
SPARE		15/1	17 C 18	15/1	SPARE				
SPARE		15/1	19 A 20	15/1	SPARE				
SPARE		15/2	21 B 22	30/2	SPARE				
SPARE		23 C 24			SPARE				
SPARE		15/2	25 A 26	15/2	SPARE				
SPARE		27 B 28			SPARE				
SPARE		29 C 30			SPARE				
CWP-1	1.3-M	20/3	31 A 32		SPARE				
REUSE EXIST	1.3-M		33 B 34		SPARE				
REUSE EXIST	1.3-M		35 C 36	20/3	1.3-M	SPARE			
CWP-2	1.3-M	20/3	37 A 38		1.3-M	REUSE EXIST			
REUSE EXIST	1.3-M		39 B 40		1.3-M				
SPARE		1.3-M	41 C 42		SPARE				

LEGEND: L-LIGHTING, R-RECEPTACLES, M-MOTORS, H-RESISTANCE HEAT, C-CONTROL, MLO- MAIN LUGS ONLY, DSL- DOUBLE SET OF LUGS, MB-MAIN BREAKER, LC-LOCKING CLIP, SFL-SUB FEED LUGS

EXISTING PANEL: 115-1-03A-2B									
CONN. LOAD: EX-22 KVA		DEMAND LOAD: EX-16.5 KVA (EX-46 A)							
MAINS: 225A MLO		VOLTAGE: 120/208 V, 3 Ø, 4 W							
LOCATION: --		MOUNTING: SURFACE							
REMARKS	KVA	BKR	CKT. NO. AND PH.	BKR	KVA	REMARKS			
EX. LOAD		20/1	1 A 2	20/1	SPARE				
EX. LOAD		20/1	3 B 4	20/1	SPARE				
EX. LOAD		20/1	5 C 6	20/1	SPARE				
EX. LOAD		20/1	7 A 8	20/1	SPARE				
TELE CLOSET	6-R	20/1	9 B 10	20/1	SPARE				
EX. LOAD		20/1	11 C 12	20/1	SPARE				
EX. LOAD		20/1	13 A 14	20/1	SPARE				
STEAM VALVE	1.0-M	20/1	15 B 16	20/1	SPARE				
EFS & CUH-3	1.5-M	20/1	17 C 18	20/1	SPARE				
SPARE		30/1	19 A 20	20/1	SPARE				
SPARE		20/1	21 B 22	20/1	SPARE				
SPARE		20/1	23 C 24	20/1	SPARE				
SPARE		20/2	25 A 26	50/3	3.7-M	AH-2(NEW BKR)			
HWP-1(REUSE)	1.3-M	20/3	29 C 30		3.7-M				
SPARE		1.3-M	31 A 32		SPARE				
SPARE		1.3-M	33 B 34		SPARE				
SPARE		1.3-M	35 C 36		SPARE				
HWP-2(NEW)	1.3-M	20/3	37 A 38		1.3-M	REUSE EXIST			
SPARE		1.3-M	39 B 40		1.3-M				
SPACE			41 C 42		SPACE				

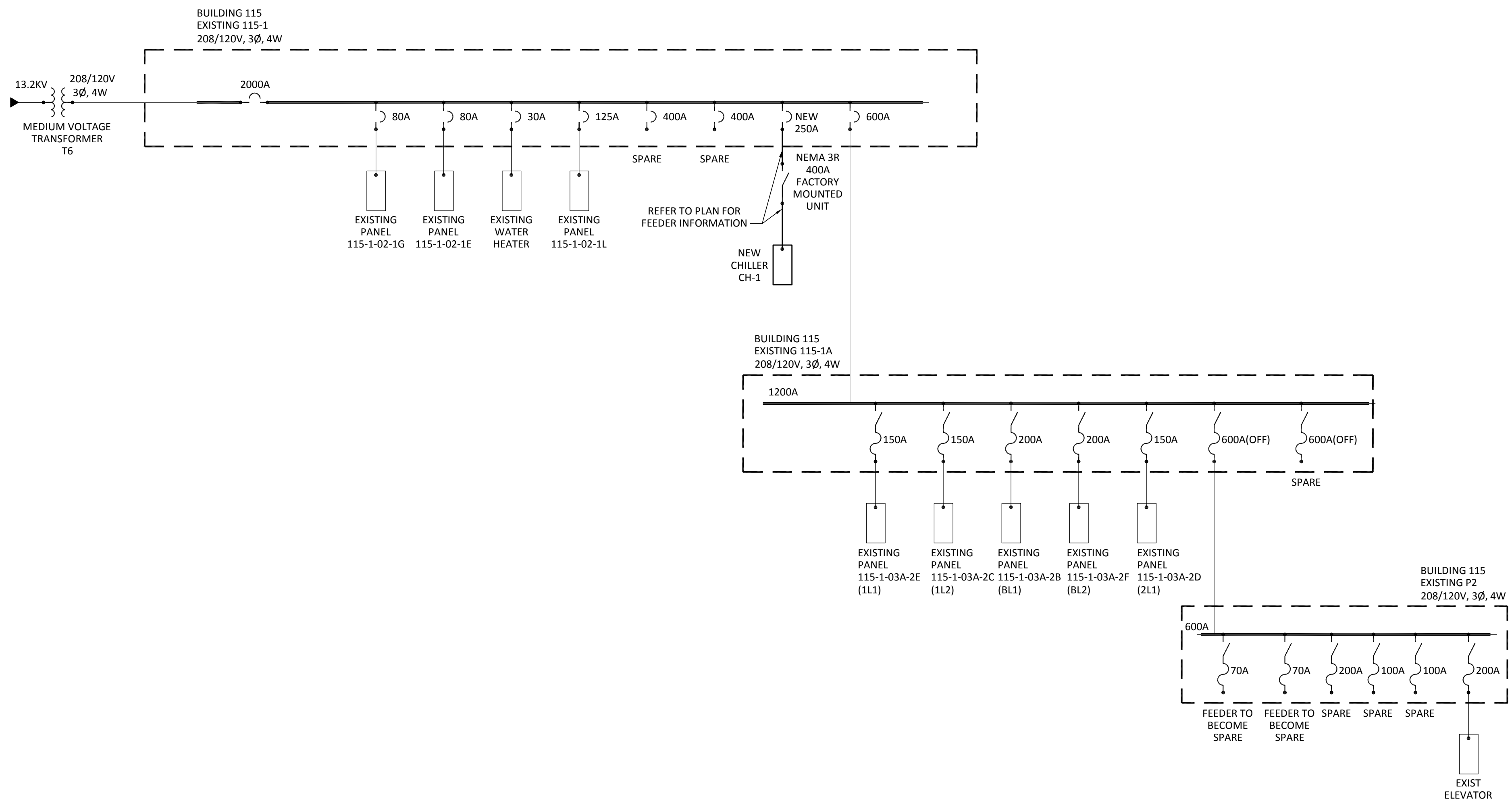
LEGEND: L-LIGHTING, R-RECEPTACLES, M-MOTORS, H-RESISTANCE HEAT, C-CONTROL, MLO- MAIN LUGS ONLY, DSL- DOUBLE SET OF LUGS, MB-MAIN BREAKER, LC-LOCKING CLIP, SFL-SUB FEED LUGS

EXISTING PANEL: 115-1-03A-2A									
CONN. LOAD: EXIST KVA		DEMAND LOAD: EXIST KVA (EXIST)							
MAINS: 225A MB		VOLTAGE: 120/208 V, 3 Ø, 4 W							
LOCATION: --		MOUNTING: FLUSH							
REMARKS	KVA	BKR	CKT. NO. AND PH.	BKR	KVA	REMARKS			
EX. LOAD		20/1	1 A 2	20/1	EX. LOAD				
EX. LOAD		20/1	3 B 4	20/1	EX. LOAD				
EX. LOAD		20/1	5 C 6	20/1	EX. LOAD				
EX. LOAD		20/1	7 A 8	20/1	EX. LOAD				
EX. LOAD		20/1	9 B 10	20/1	EX. LOAD				
EX. LOAD		20/1	11 C 12	20/1	EX. LOAD				
EX. LOAD		20/1	13 A 14	20/1	EX. LOAD				
EX. LOAD		20/1	15 B 16	20/1	EX. LOAD				
SPARE		20/1	17 C 18	20/1	SPARE				
SPARE		30/1	19 A 20	20/1	SPARE				
SPARE		20/1	21 B 22	20/1	EX. LOAD				
SPARE		20/1	23 C 24	20/2	SPARE				
SPARE		20/2	25 A 26	50/3	3.7-M				
SPACE			27 B 28		3.7-M				
SPACE			29 C 30		SPACE				
SPACE			31 A 32		SPACE				
SPACE			33 B 34		SPACE				
SPACE			35 C 36		SPACE				
SPACE			37 A 38		SPACE				
SPACE			39 B 40		SPACE				
SPACE			41 C 42		SPACE				

LEGEND: L-LIGHTING, R-RECEPTACLES, M-MOTORS, H-RESISTANCE HEAT, C-CONTROL, MLO- MAIN LUGS ONLY, DSL- DOUBLE SET OF LUGS, MB-MAIN BREAKER, LC-LOCKING CLIP, SFL-SUB FEED LUGS

GENERAL NOTES

- A- ALL NEW CONDUITS SHALL BE RUN IN EXISTING OR NEW CHASES.
- B- ALL CONDUITS SHALL BE PROVIDED CONCEALED ABOVE EXISTING CEILINGS IN FINISHED AREAS WHERE POSSIBLE.
- C- ALL DEMOLISHED ELECTRICAL FEEDS SHALL BE REMOVED BACK TO SOURCE AND MARKED AS SPARE. SPARE BREAKERS MAY BE REUSED AS PART OF THE NEW WORK DESCRIBED IN THESE DOCUMENTS.
- D- CONNECT SMOKE DUCT DETECTORS TO EXISTING FIRE ALARM SYSTEM. PROVIDE ALL NECESSARY BOOSTER PANS, SYSTEM PROGRAMMING, RELAYS, ETC FOR COMPLETE OPERATING SYSTEM.
- E- PROVIDE A LABELED EMERGENCY MANUAL CONTROL SHUT OFF BUTTON NEAR THE FIRE ALARM ANNUNCIATOR PANEL PER NFPA 90A.

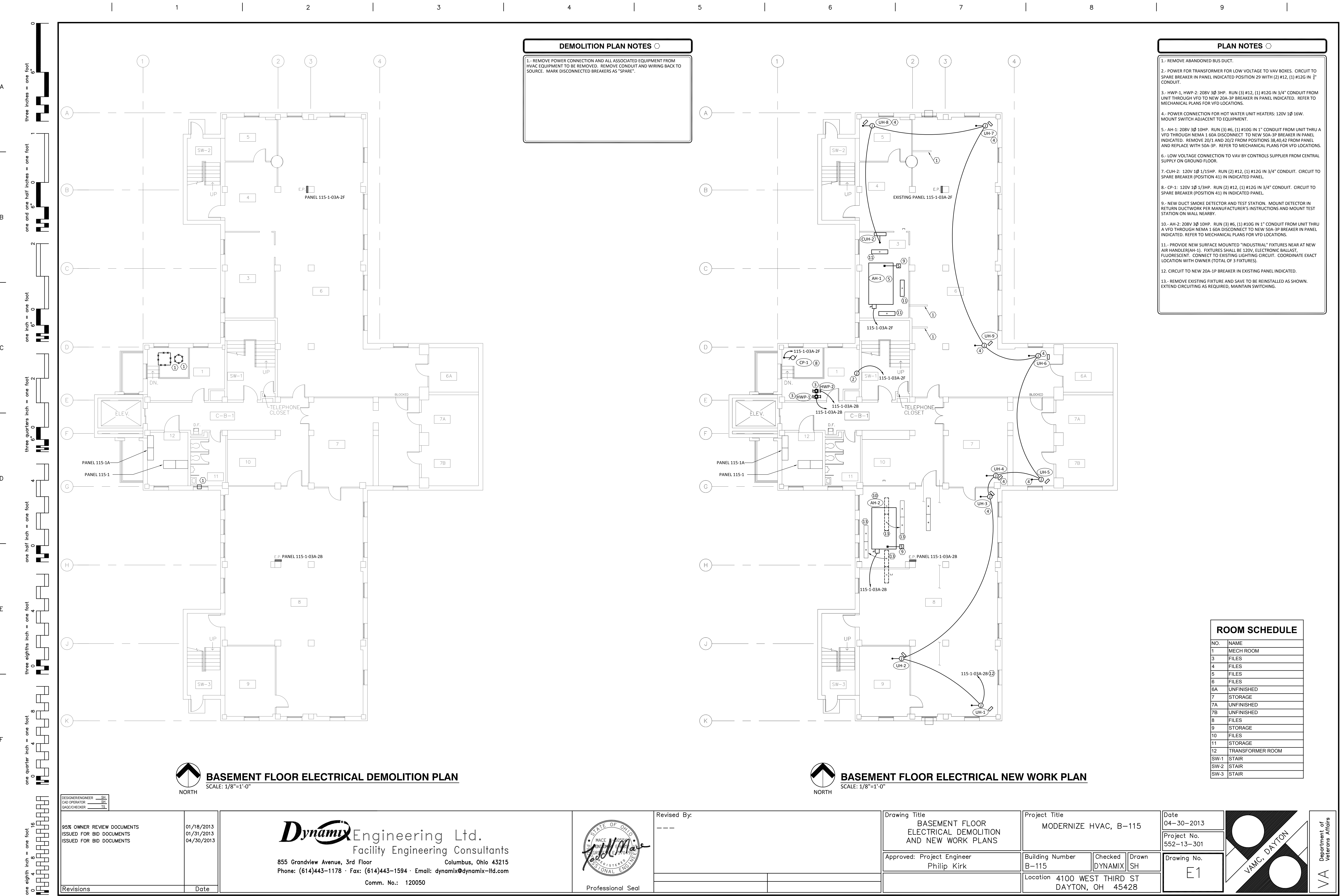


LEGEND

- AFF ABOVE FINISHED FLOOR - TO BOTTOM OF ITEM UNLESS INDICATED OTHERWISE ON DRAWINGS
- CKT CIRCUIT
- C CONDUIT
- CM CONSTRUCTION MANAGER
- CS CENTRAL SOUND SYSTEM
- DISC DISCONNECT
- E EXISTING TO REMAIN
- EC ELECTRICAL CONTRACTOR
- EM EMERGENCY
- ES EQUIPMENT SUPPLIER
- FAAP FIRE ALARM ANNUNCIATOR PANEL
- FACP FIRE ALARM CONTROL PANEL
- FPC FIRE PROTECTION CONTRACTOR
- GC GENERAL CONTRACTOR
- GND GROUND
- HC HVAC CONTRACTOR
- JB JUNCTION BOX
- MH MOUNTING HEIGHT TO CENTERLINE OF ITEM UNLESS INDICATED OTHERWISE ON DRAWINGS
- NC NOT IN CONTRACT
- NIC PLUMBING CONTRACTOR
- R DEVICE TO BE REMOVED AND RELOCATED IN ANOTHER AREA
- RD DEVICE RELOCATED FROM ANOTHER AREA
- S SURFACE MOUNTED
- TYP TYPICAL
- WG WIRE GUARD SIZED SPECIFICALLY FOR DEVICE IT IS SERVING
- WP WEATHERPROOF
- PLAN NOTE SYMBOL - APPLIES ONLY TO SHEET ON WHICH NOTE IS SHOWN
- DETAIL NOTE SYMBOL - APPLIES ONLY TO DETAIL ON WHICH NOTE IS SHOWN
- EQUIPMENT REFERENCE SYMBOL
- ROOM NUMBER
- DETAIL B SHOWN ON SHEET E2
- ELECTRICAL CONNECTION REQUIRED
- EXIT LIGHTING FIXTURE, ARROWS AS INDICATED, CEILING MOUNTED, CONNECT AHEAD OF LOCAL SWITCHING
- EXIT LIGHTING FIXTURE, ARROWS AS INDICATED, WALL MOUNTED AT 3' ABOVE DOOR TRIM OR BELOW CEILING AS REQUIRED, CONNECT AHEAD OF LOCAL SWITCHING
- LIGHTING FIXTURE; CAPITAL LETTER DENOTES FIXTURE TYPE, LOWER CASE LETTER DENOTES SWITCHING ARRANGEMENT
- HEALTH CARE: LIGHTING FIXTURE ON NIGHT LIGHT (NL) AND/OR EMERGENCY CIRCUIT
- OFFICE/STICK-ON: LIGHTING FIXTURE WITH BATTERY UNIT, BATTERY UNIT
- EDUCATIONAL: LIGHTING FIXTURE WITH PARALLEL EMERGENCY BATTERY BALLAST; CONNECT EMERGENCY BALLAST AHEAD OF LOCAL SWITCHING
- EXISTING LIGHT FIXTURE TO BE REMOVED AND/OR RELOCATED, LINE TYPE TYPICAL FOR ALL DEVICES TO BE REMOVED AND/OR RELOCATED
- EXISTING LIGHT FIXTURE TO REMAIN, MAINTAIN EXISTING CIRCUITRY, UNLESS WHEN NOTED OTHERWISE, LINE TYPE TYPICAL FOR ALL DEVICES TO REMAIN
- DASHED SYMBOL INDICATES THAT PARTICULAR OUTLET OR DEVICE TO BE REMOVED AND CIRCUITRY MADE CONTINUOUS WHERE REQUIRED
- EXISTING OUTLET OR DEVICE TO REMAIN, MAINTAIN EXISTING CIRCUITRY
- EACH ARROWHEAD REPRESENTS ONE COMPLETE CIRCUIT; CAPITAL LETTER DENOTES PANEL, NUMBER DENOTES CIRCUIT
- WIRE & CONDUIT IN WALL OR ABOVE CEILING
- WIRE & CONDUIT IN OR BELOW FLOOR SLAB OR BELOW GRADE
- CABLE TRAY
- JUNCTION BOX
- 20A-125V SINGLE RECEPTACLE, NEMA 5-20R (18" MH)
- 20A-125V DUPLEX RECEPTACLE, NEMA 5-20R (18" MH)
- SPECIAL PURPOSE RECEPTACLE, REFER TO NOTE ON PLAN
- 20A-125V DOUBLE DUPLEX RECEPTACLE, NEMA 5-20R, (18" MH) TWO-GANG ASSEMBLY
- 20A-125V DOUBLE DUPLEX RECEPTACLE, NEMA 5-20R, (46" MH) WHERE SHOWN ABOVE COUNTER, COORDINATE HEIGHT WITH CASEWORK CONTRACTOR
- 20A-125V DUPLEX RECEPTACLE, NEMA 5-20R (46" MH), WHERE SHOWN ABOVE COUNTER, COORDINATE HEIGHT WITH CASEWORK CONTRACTOR
- 20A-125V DUPLEX RECEPTACLE, NEMA 5-20R, WITH GROUND FAULT CIRCUIT INTERRUPTER (18" MH)
- 20A-125V WEATHERPROOF DUPLEX RECEPTACLE, NEMA 5-20R, WITH GROUND FAULT CIRCUIT INTERRUPTER (18" MH), WITH TAYMAC #20310 STANDARD COVER, VERTICAL MOUNT
- 20A-125V DUPLEX RECEPTACLE, NEMA 5-20R, TAMPER RESISTANT, HUBBELL #HBL83005G (18" MH)
- 20A-125V DUPLEX RECEPTACLE, NEMA 5-20R, IN HUBBELL B2427 FLUSH FLOOR BOX S3825 COVER PLATE, PROVIDE CARPET FLANGE WHERE REQUIRED

LEGEND CONTINUED

- 20A-125V DUPLEX PEDESTAL TYPE FLOOR RECEPTACLE, NEMA 5-20R, IN HUBBELL BA-253



DEMOLITION PLAN NOTES

1. REMOVE POWER CONNECTION AND ALL ASSOCIATED EQUIPMENT FROM HVAC EQUIPMENT TO BE REMOVED. REMOVE CONDUIT AND WIRING BACK TO SOURCE. MARK DISCONNECTED BREAKERS AS "SPARE".

PLAN NOTES

1. REMOVE ABANDONED BUS DUCT.
2. POWER FOR TRANSFORMER FOR LOW VOLTAGE TO VAV BOXES. CIRCUIT TO SPARE BREAKER IN PANEL INDICATED POSITION 29 WITH (2) #12, (1) #12G IN 3/4" CONDUIT.
3. HWP-1, HWP-2: 208V 3Ø 3HP. RUN (3) #12, (1) #12G IN 3/4" CONDUIT FROM UNIT THROUGH VFD TO NEW 20A-3P BREAKER IN PANEL INDICATED. REFER TO MECHANICAL PLANS FOR VFD LOCATIONS.
4. POWER CONNECTION FOR HOT WATER UNIT HEATERS: 120V 1Ø 16W. MOUNT SWITCH ADJACENT TO EQUIPMENT.
5. AH-1: 208V 3Ø 10HP. RUN (3) #6, (1) #10G IN 1" CONDUIT FROM UNIT THRU A VFD THROUGH NEMA 1 60A DISCONNECT TO NEW 50A-3P BREAKER IN PANEL INDICATED. REMOVE 20/1 AND 20/2 FROM POSITIONS 38,40,42 FROM PANEL AND REPLACE WITH 50A-3P. REFER TO MECHANICAL PLANS FOR VFD LOCATIONS.
6. LOW VOLTAGE CONNECTION TO VAV BY CONTROLS SUPPLIER FROM CENTRAL SUPPLY ON GROUND FLOOR.
7. CUH-2: 120V 1Ø 1/15HP. RUN (2) #12, (1) #12G IN 3/4" CONDUIT. CIRCUIT TO SPARE BREAKER (POSITION 41) IN INDICATED PANEL.
8. CP-1: 120V 1Ø 1/3HP. RUN (2) #12, (1) #12G IN 3/4" CONDUIT. CIRCUIT TO SPARE BREAKER (POSITION 41) IN INDICATED PANEL.
9. NEW DUCT SMOKE DETECTOR AND TEST STATION. MOUNT DETECTOR IN RETURN DUCTWORK PER MANUFACTURER'S INSTRUCTIONS AND MOUNT TEST STATION ON WALL NEARBY.
10. AH-2: 208V 3Ø 10HP. RUN (3) #6, (1) #10G IN 1" CONDUIT FROM UNIT THRU A VFD THROUGH NEMA 1 60A DISCONNECT TO NEW 50A-3P BREAKER IN PANEL INDICATED. REFER TO MECHANICAL PLANS FOR VFD LOCATIONS.
11. PROVIDE NEW SURFACE MOUNTED "INDUSTRIAL" FIXTURES NEAR AT NEW AIR HANDLER(AH-1). FIXTURES SHALL BE 120V, ELECTRONIC BALLAST, FLUORESCENT. CONNECT TO EXISTING LIGHTING CIRCUIT. COORDINATE EXACT LOCATION WITH OWNER (TOTAL OF 3 FIXTURES).
12. CIRCUIT TO NEW 20A-1P BREAKER IN EXISTING PANEL INDICATED.
13. REMOVE EXISTING FIXTURE AND SAVE TO BE REINSTALLED AS SHOWN. EXTEND CIRCUITING AS REQUIRED, MAINTAIN SWITCHING.

ROOM SCHEDULE

NO.	NAME
1	MECH ROOM
3	FILES
4	FILES
5	FILES
6	FILES
6A	UNFINISHED
7	STORAGE
7A	UNFINISHED
7B	UNFINISHED
8	FILES
9	STORAGE
10	FILES
11	STORAGE
12	TRANSFORMER ROOM
SW-1	STAIR
SW-2	STAIR
SW-3	STAIR

BASEMENT FLOOR ELECTRICAL DEMOLITION PLAN
SCALE: 1/8"=1'-0"

BASEMENT FLOOR ELECTRICAL NEW WORK PLAN
SCALE: 1/8"=1'-0"

DESIGNER/ENGINEER
CAD OPERATOR
CHECKER

95% OWNER REVIEW DOCUMENTS
ISSUED FOR BID DOCUMENTS
ISSUED FOR BID DOCUMENTS

01/18/2013
01/31/2013
04/30/2013

Dynamix Engineering Ltd.
Facility Engineering Consultants
855 Grandview Avenue, 3rd Floor Columbus, Ohio 43215
Phone: (614)443-1178 · Fax: (614)443-1594 · Email: dynamix@dynamix-ltd.com
Comm. No.: 120050



Revised By:

Drawing Title
BASEMENT FLOOR
ELECTRICAL DEMOLITION
AND NEW WORK PLANS

Approved: Project Engineer
Philip Kirk

Project Title
MODERNIZE HVAC, B-115

Building Number
B-115

Checked
DYNAMIX

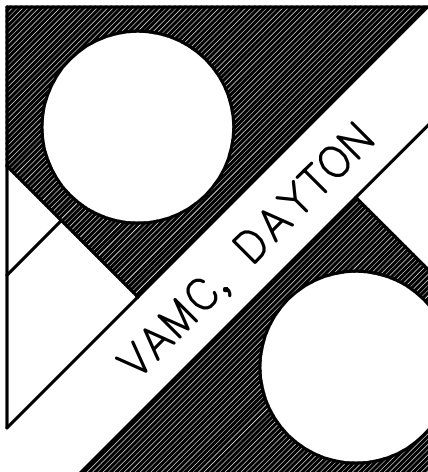
Drawn
SH

Location 4100 WEST THIRD ST
DAYTON, OH 45428

Date
04-30-2013

Project No.
552-13-301

Drawing No.
E1



VA Department of Veterans Affairs

DEMOLITION PLAN NOTES

1. REMOVE POWER CONNECTION AND ALL ASSOCIATED EQUIPMENT FROM HVAC EQUIPMENT TO BE REMOVED. REMOVE CONDUIT AND WIRING BACK TO SOURCE. MARK DISCONNECTED BREAKERS AS "SPARE".

PLAN NOTES

1. CH-1: 208V 3Ø MCA 246A. RUN (3) #250, (1) #4G IN 3" CONDUIT FROM UNIT THROUGH A UNIT MOUNTED NEMA 3R 400A DISCONNECT TO NEW 250A-3P BREAKER IN PANEL 115-1. REMOVE EXISTING SPARE BREAKER AS REQUIRED.

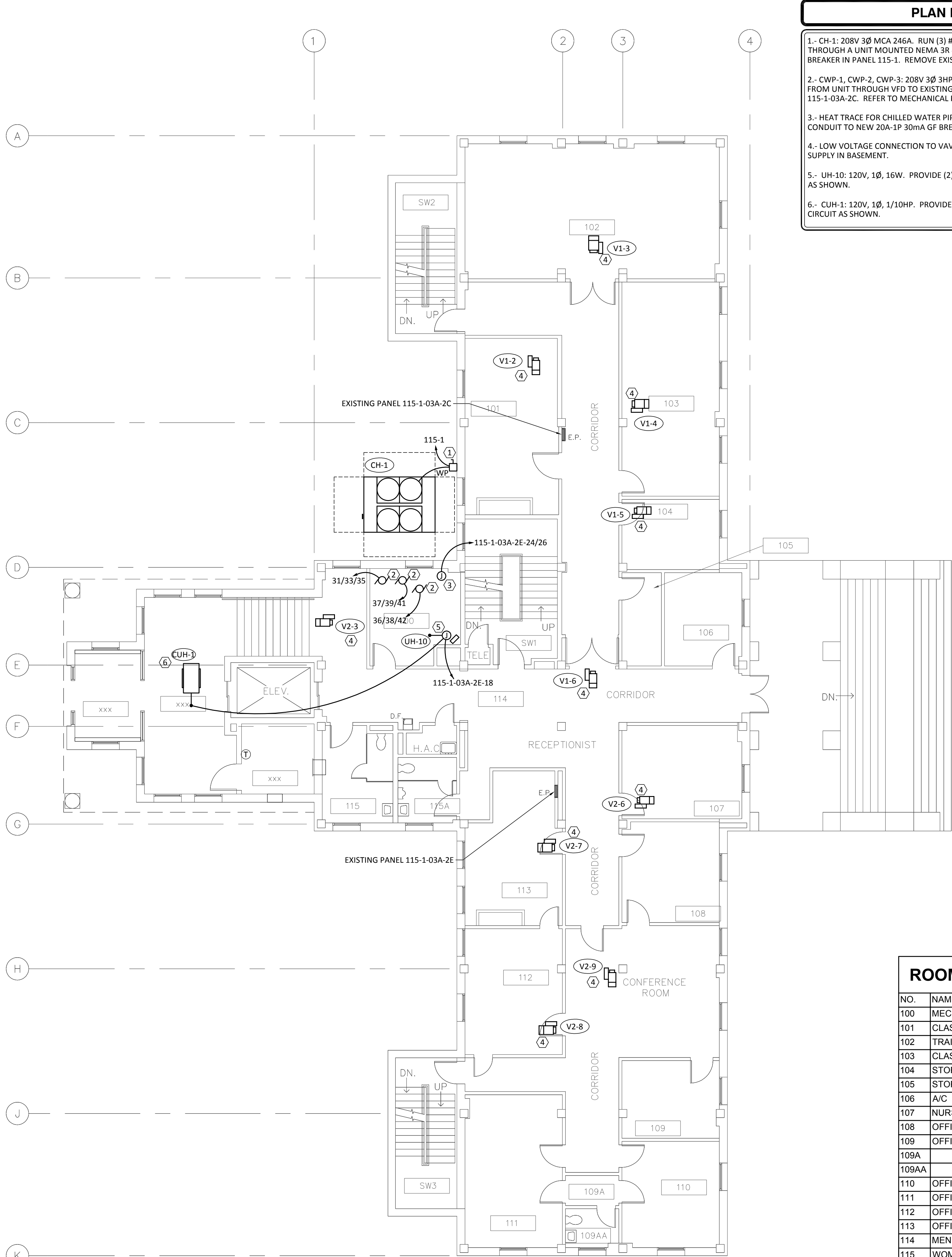
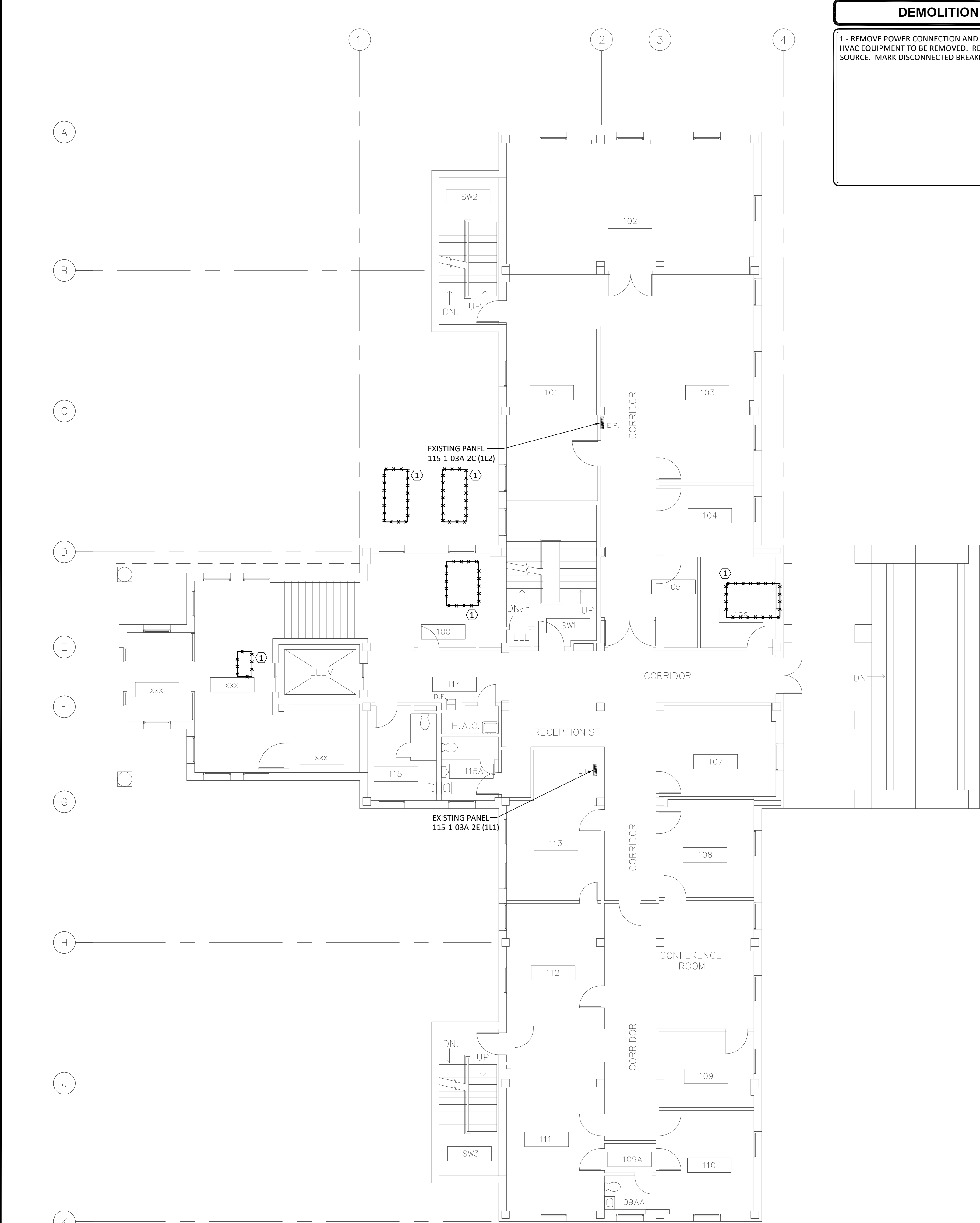
2. CWP-1, CWP-2, CWP-3: 208V 3Ø 3HP. RUN (3) #12, (1) #12G IN 3/4" CONDUIT FROM UNIT THROUGH VFD TO EXISTING 20-3PA BREAKER IN PANEL 115-1-03A-2C. REFER TO MECHANICAL PLANS FOR VFD LOCATIONS.

3. HEAT TRACE FOR CHILLED WATER PIPING. RUN (2) #12, (1) #12G IN 1" CONDUIT TO NEW 20A-1P 30mA GF BREAKER IN PANEL 115-1-03A-2E

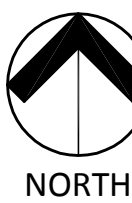
4. LOW VOLTAGE CONNECTION TO VAV BY CONTROLS SUPPLIER FROM CENTRAL SUPPLY IN BASEMENT.

5. UH-10: 120V, 1Ø, 16W. PROVIDE (2) #12, (1) #12G IN 3/4" CONDUIT. CIRCUIT AS SHOWN.

6. CUH-1: 120V, 1Ø, 1/10HP. PROVIDE (2) #12, (1) #12G IN 3/4" CONDUIT. CIRCUIT AS SHOWN.



ROOM SCHEDULE	
NO.	NAME
100	MECHANICAL
101	CLASSROOM
102	TRAINING CLASSROOM
103	CLASSROOM
104	STORAGE
105	STORAGE
106	A/C
107	NURSING EDUCATION
108	OFFICE
109	OFFICE
109A	
109AA	
110	OFFICE
111	OFFICE
112	OFFICE
113	OFFICE
114	MEN
115	WOMEN
SW-1	STAIR
SW-2	STAIR
SW-3	STAIR
XXX	VESTIBULE
XXX	LOBBY
XXX	ELEVATOR EQUIPMENT ROOM



FIRST FLOOR ELECTRICAL DEMOLITION PLAN
SCALE: 1/8"=1'-0"



FIRST FLOOR ELECTRICAL NEW WORK PLAN
SCALE: 1/8"=1'-0"

DESIGNER/ENGINEER: [Signature]
CAD OPERATOR: [Signature]
CHECKER: [Signature]

95% OWNER REVIEW DOCUMENTS
ISSUED FOR BID DOCUMENTS
ISSUED FOR BID DOCUMENTS

01/18/2013
01/31/2013
04/30/2013

Dynamix Engineering Ltd.
Facility Engineering Consultants
855 Grandview Avenue, 3rd Floor
Columbus, Ohio 43215
Phone: (614)443-1178 · Fax: (614)443-1594 · Email: dynamix@dynamix-ltd.com
Comm. No.: 120050

STATE OF OHIO
MADE BY
APPROVED
REGISTERED PROFESSIONAL ENGINEER

Professional Seal

Revised By:

Drawing Title
FIRST FLOOR
ELECTRICAL DEMOLITION
AND NEW WORK PLANS

Approved: Project Engineer
Philip Kirk

Project Title
MODERNIZE HVAC, B-115

Building Number
B-115 115

Checked
DYNAMIX

Drawn
SH

Location
4100 WEST THIRD ST
DAYTON, OH 45428

Date
04-30-2013
Project No.
552-13-301

Drawing No.
E2

VA FORM 08-6231, OCT 1978

VA Department of Veterans Affairs

0 1 2 3 4 5 6 7 8 9 10
three eighths inch = one foot
one eighth inch = one foot
one quarter inch = one foot
three eighths inch = one foot
one half inch = one foot
one half inch = one foot
three quarters inch = one foot
one inch = one foot
one and one half inches = one foot
three inches = one foot

DESIGNER/ENGINEER
CAD OPERATOR
CHECKER/REVIEWER

95% OWNER REVIEW DOCUMENTS
ISSUED FOR BID DOCUMENTS
ISSUED FOR BID DOCUMENTS

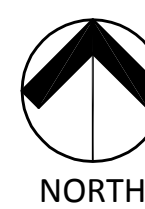
01/18/2013
01/31/2013
04/30/2013

Dynamix Engineering Ltd.
Facility Engineering Consultants
855 Grandview Avenue, 3rd Floor Columbus, Ohio 43215
Phone: (614)443-1178 · Fax: (614)443-1594 · Email: dynamix@dynamix-ltd.com
Comm. No.: 120050



Professional Seal

Revised By:



SECOND FLOOR ELECTRICAL NEW WORK PLAN

SCALE: 1/8"=1'-0"

Drawing Title
SECOND FLOOR
ELECTRICAL DEMOLITION
AND NEW WORK PLANS

Approved: Project Engineer
Philip Kirk

Project Title
MODERNIZE HVAC, B-115

Building Number
B-115 115

Checked
DYNAMIX

Drawn
SH

Location 4100 WEST THIRD ST
DAYTON, OH 45428

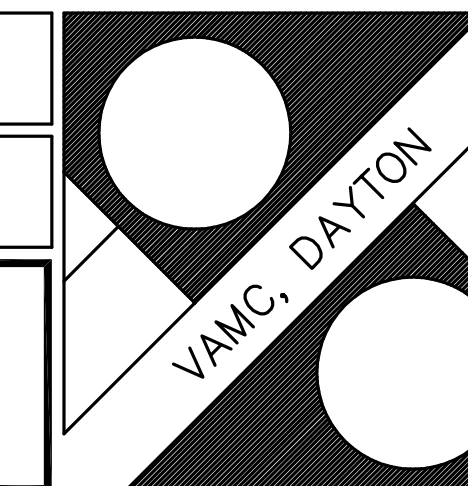
Date
04-30-2013

Project No.
552-13-301

Drawing No.
E3

ROOM SCHEDULE

NO.	NAME
200	OFFICE
201	CORRIDOR
202A	OFFICE
202B	OFFICE
202C	FUTURE OFFICE
202D	FUTURE OFFICE
203	OFFICE
204	OFFICE
205	OFFICE
206	OFFICE
207	CHAPLIN'S OFFICE
208	CHAPLIN'S OFFICE
209	CHAPLIN'S OFFICE
210	CHAPLIN'S OFFICE
211	CORRIDOR
212	
212A	STORAGE
212B	MEN
213	
214	WOMEN
215	CONFERENCE ROOM
216	OFFICE
SW-1	STAIR
SW-2	STAIR
SW-3	STAIR



VA