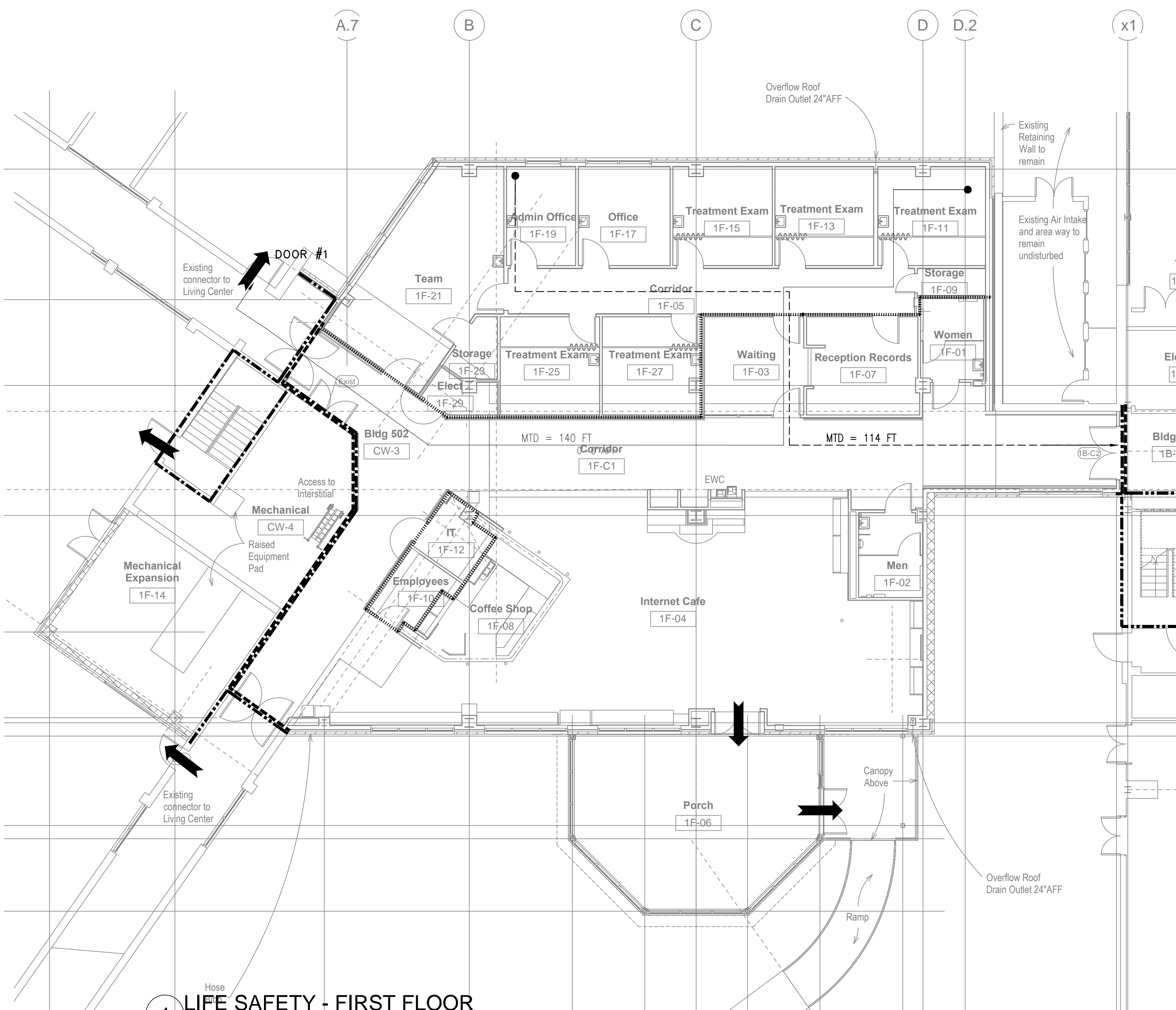


three eighths inch = one foot
one half inch = one foot
three quarters inch = one foot
one inch = one foot
one and one half inches = one foot
two inches = one foot
three inches = one foot
four inches = one foot
five inches = one foot
six inches = one foot
seven inches = one foot
eight inches = one foot
nine inches = one foot
ten inches = one foot
eleven inches = one foot
twelve inches = one foot
thirteen inches = one foot
fourteen inches = one foot
fifteen inches = one foot
sixteen inches = one foot
seventeen inches = one foot
eighteen inches = one foot
nineteen inches = one foot
twenty inches = one foot
twenty one inches = one foot
twenty two inches = one foot
twenty three inches = one foot
twenty four inches = one foot
twenty five inches = one foot
twenty six inches = one foot
twenty seven inches = one foot
twenty eight inches = one foot
twenty nine inches = one foot
thirty inches = one foot
thirty one inches = one foot
thirty two inches = one foot
thirty three inches = one foot
thirty four inches = one foot
thirty five inches = one foot
thirty six inches = one foot
thirty seven inches = one foot
thirty eight inches = one foot
thirty nine inches = one foot
forty inches = one foot
forty one inches = one foot
forty two inches = one foot
forty three inches = one foot
forty four inches = one foot
forty five inches = one foot
forty six inches = one foot
forty seven inches = one foot
forty eight inches = one foot
forty nine inches = one foot
fifty inches = one foot
fifty one inches = one foot
fifty two inches = one foot
fifty three inches = one foot
fifty four inches = one foot
fifty five inches = one foot
fifty six inches = one foot
fifty seven inches = one foot
fifty eight inches = one foot
fifty nine inches = one foot
sixty inches = one foot
sixty one inches = one foot
sixty two inches = one foot
sixty three inches = one foot
sixty four inches = one foot
sixty five inches = one foot
sixty six inches = one foot
sixty seven inches = one foot
sixty eight inches = one foot
sixty nine inches = one foot
seventy inches = one foot
seventy one inches = one foot
seventy two inches = one foot
seventy three inches = one foot
seventy four inches = one foot
seventy five inches = one foot
seventy six inches = one foot
seventy seven inches = one foot
seventy eight inches = one foot
seventy nine inches = one foot
eighty inches = one foot
eighty one inches = one foot
eighty two inches = one foot
eighty three inches = one foot
eighty four inches = one foot
eighty five inches = one foot
eighty six inches = one foot
eighty seven inches = one foot
eighty eight inches = one foot
eighty nine inches = one foot
ninety inches = one foot
ninety one inches = one foot
ninety two inches = one foot
ninety three inches = one foot
ninety four inches = one foot
ninety five inches = one foot
ninety six inches = one foot
ninety seven inches = one foot
ninety eight inches = one foot
ninety nine inches = one foot
one hundred inches = one foot



1 LIFE SAFETY - FIRST FLOOR
Scale: 1/8"=1'-0"

LIFE SAFETY LEGEND

2 HR FIRE BARRIER
(1-1/2 HOUR DOORS)

1 HR FIRE BARRIER
(3/4 HOUR DOORS)

SMOKE BARRIER

SMOKE RESISTIVE

HAZARDOUS AREA

EXIT

XX' MTD

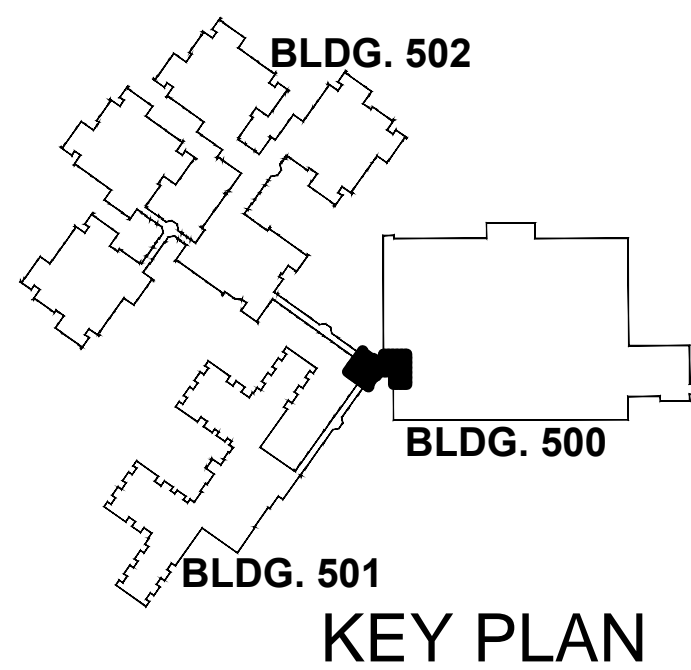
MTD TO EXIT

XX' MTD

MTD TO SMOKE BARRIER

EXIT CAPACITY SUMMARY						
Floor 1	DOOR	STAIR WIDTH (in.)	DOOR WIDTH (Clear in.)	CAPACITY FACTOR (in./person)	EXIT CAPACITY PROVIDED (people)	EXIT CAPACITY REQUIRED (people)
	Porch	N/A	32	0.2	160	100
	Door 1	N/A	32	0.2	160	120
TOTAL CAPACITY PROVIDED (people)					320	
TOTAL CAPACITY REQUIRED/TOTAL OCCUPANT LOAD (people)						220

OCCUPANT LOAD SUMMARY				
Floor 1	USE	AREA (sq ft)	OCCUPANT LOAD FACTOR (sq ft/person)	OCCUPANT LOAD (People)
	Business/Outpatient Treatment	3063	100	31
	Assembly (Team, Waiting, Internet Café, Coffee Shop)	2846	15	190
	Industrial/Storage	883	300	3
	TOTAL AREA	6792	TOTAL OCCUPANT LOAD	224



CONSULTANTS

Geotechnical:

SCHNABEL ENGINEERING
1901 SOUTH MAIN ST
SUITE 11
BLACKSBURG, VA 24060

Civil and Structural:

ALPHA CORPORATION
150 S LOUDOUN ST
SUITE 200
WINCHESTER, VA 22601

Fire Protection:

KOFFEL ASSOCIATES, INC.
8815 CENTRE PARK DRIVE
SUITE 200
COLUMBIA, MD 21045-2107

Mechanical, Electrical, and Plumbing:

HENRY ADAMS
600 BALTIMORE AVENUE
BALTIMORE, MD 21204

Telecommunications:

USSI CONSULTING
10440 LITTLE PATUXENT PKWY
SUITE 300
COLUMBIA, MD 21044

Transportation:

ROBERT L. SEYMOUR
182 THOMAS JOHNSON DR
FREDERICK, MD 21702

ARCHITECTS

ERNEST BLAND ASSOCIATES, P.C.
TECHNICAL FACILITIES DESIGN
802 SLIGO AVENUE, SILVER SPRING, MARYLAND 20910
TELEPHONE (301) 589-4811 FAX (301) 589-3810

Drawing Title

Life Safety Plans - First Floor

Approved: Project Director

Project Title

Construct
Domiciliary Internet Cafe & Rehab Medicine Expansion

Location

Date

16 April 2013

Checked

MJA

Drawn

AMK

Project Number

613-CSI-113

Building Number

Drawing Number

GI-101

100% Bid Submission

Department of Veterans Affairs