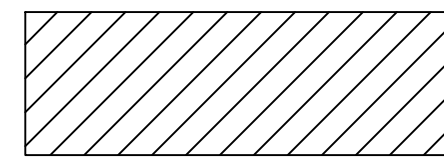
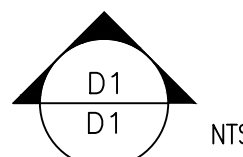
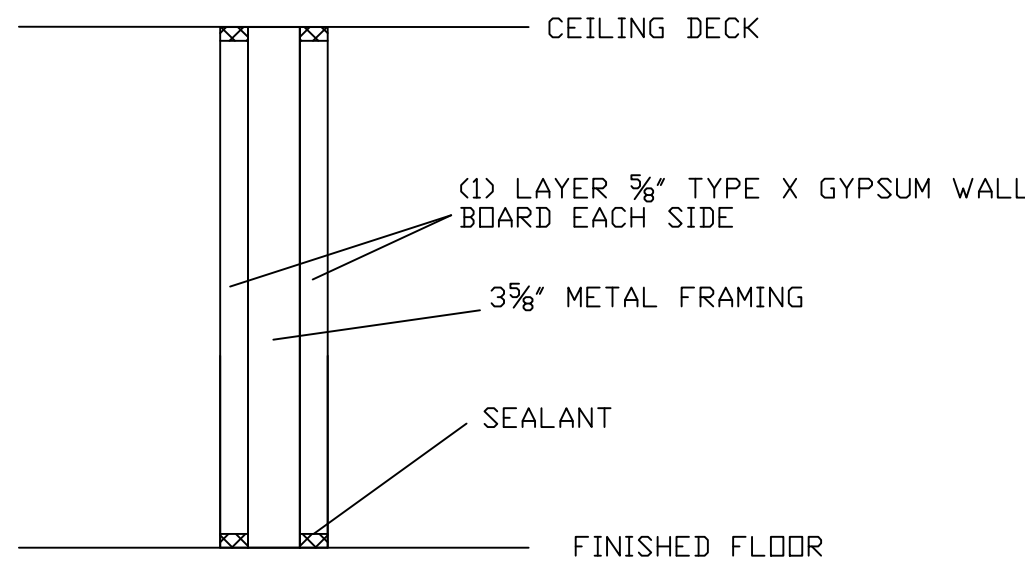


three inches = one foot
one and one half inches = one foot
one inch = one foot
three quarters inch = one foot
one half inch = one foot
three eighths inch = one foot
one quarter inch = one foot
one eighth inch = one foot
one sixteenth inch = one foot

LEGEND

- WALL TO BE DEMOLISHED
-  FIXTURE TO BE REMOVED
- CONSTRUCTION BARRIER



DEMOLISH SHOWER AND ADJACENT NOOK.

REMOVE WALL AS SHOWN, COORDINATE WITH DRAWING A1.

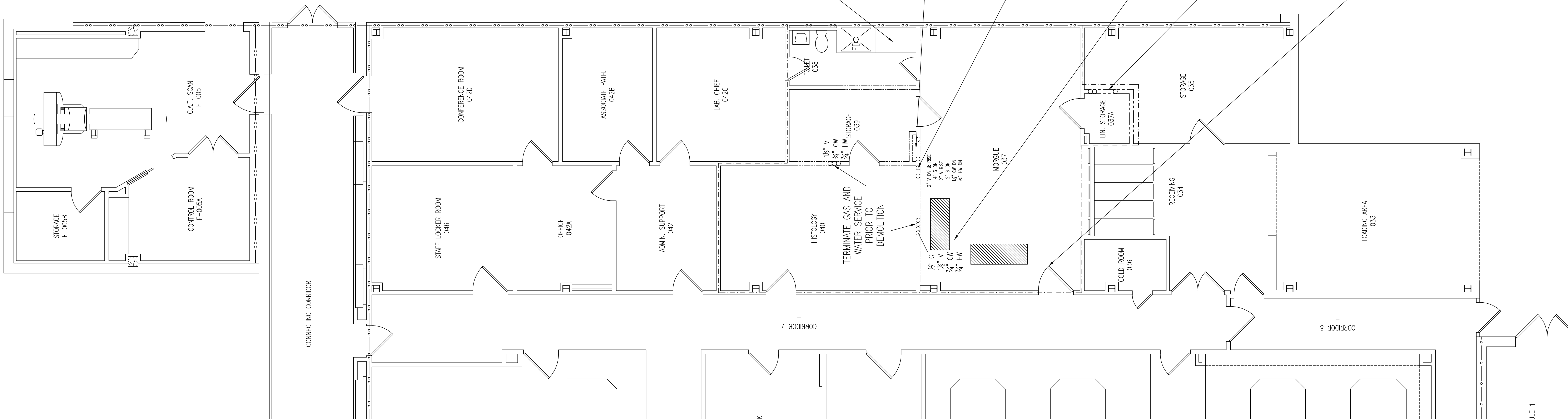
DISCONNECT PANEL LP-B5 AND MOVE TO LOCATION SHOWN ON E2. TERMINATE EXISTING CONNECTION TO JUNCTION BOX AND EXTEND TO NEW LOCATION.

DEMOLISH WALL BETWEEN ROOMS 039, 040 AND 037.

REMOVE AUTOPSY EQUIPMENT.

REMOVE SINK IN ROOM 037A. DEMOLISH WALLS BETWEEN 035, 037A. REMOVE PLUMBING.


REMOVE THIS DOOR AND JAMB



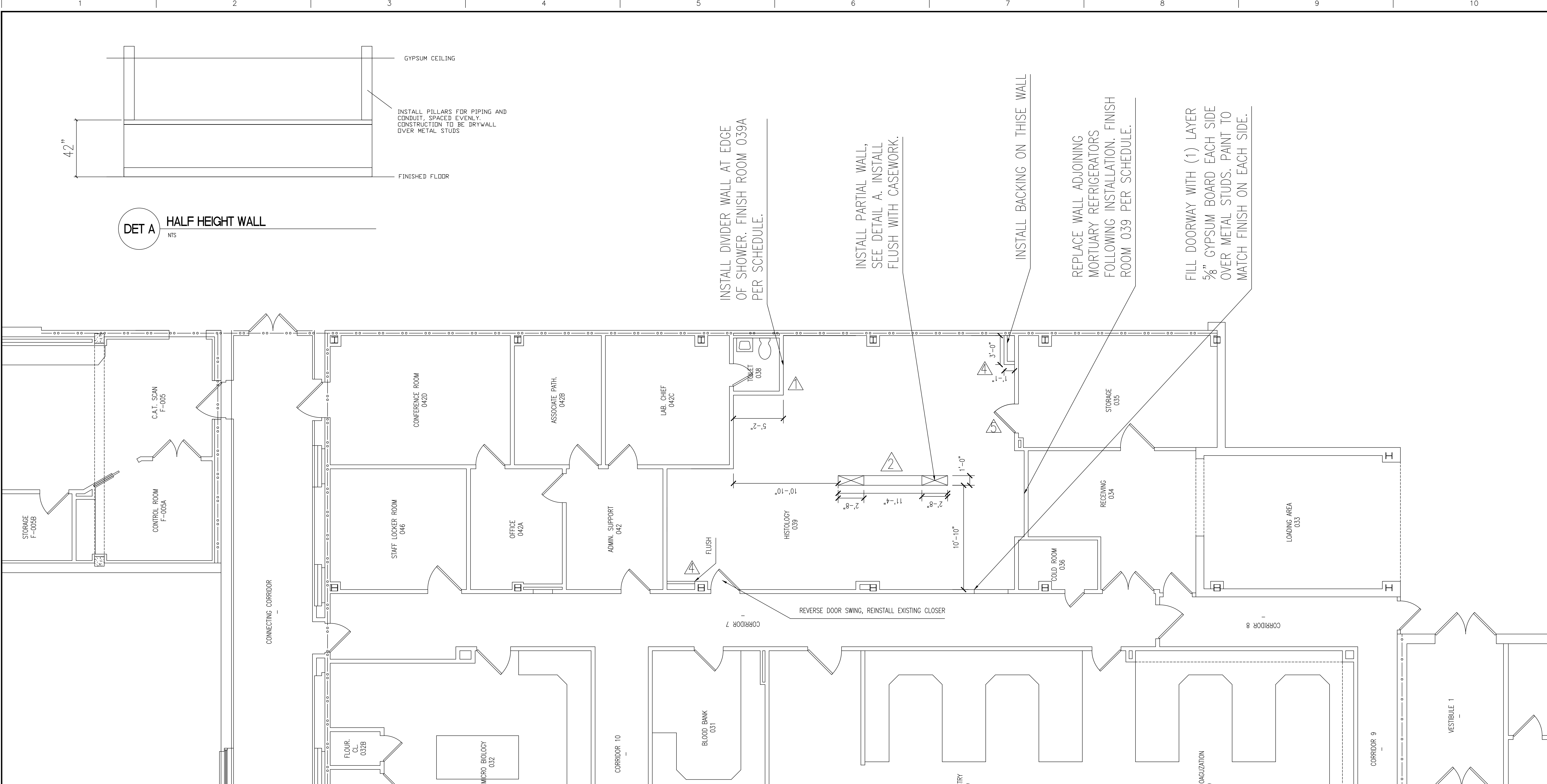
GENERAL NOTES - DEMOLITION

- A. EXISTING EQUIPMENT, IN AREAS OF DEMOLITION SUCH AS LIGHTING FIXTURES, WIRING DEVICES, CONDUITS, ETC., TO BE REMOVED COMPLETELY. CUT/CAP CONDUITS AT THE AREA OF WORK PERIMETER AND REMOVE CONDUIT WITHIN THE WORK AREA, DISCONNECT WIRING AT THE OVERCURRENT PROTECTIVE DEVICE AND REMOVE WIRING COMPLETELY FROM THE ABANDONED CONDUITS.
- B. REMOVE ALL ACCESSIBLE ABANDONED WIRING OF ALL TYPES, OR CAP AND LABEL IN JUNCTION BOX FOR RE-USE, IN COMPLIANCE WITH THE NATIONAL ELECTRIC CODE.
- C. MAINTAIN AND RESTORE, IF INTERRUPTED, ALL CONDUITS AND CONDUCTORS PASSING THROUGH RENOVATED AREAS AND SERVICING UNDISTURBED AREAS.
- D. DEMOLISH DROP CEILING IN ALL ROOMS MODIFIED AND REPLACE WITH NEW 2'X2' DROP CEILING, 8" AFF.
- E. DEMOLISH PIPING SYSTEMS WHERE FIXTURES ARE TERMINATED TO CEILING. CAP AND SEAL, TEST AT 150% OF DEMAND PRESSURE.
- F. DEMOLISH ELECTRICAL OUTLETS REMOVED BACK TO PANEL.
- G. REMOVE FINISHED FLOOR IN ROOM 039, 040, 037. REPLACE PER SCHEDULE.
- H. RUN NEW CIRCUIT FOR COLD STORAGE AND MORTUARY FREEZER BEFORE MOVING PANEL LP-B5.
- I. REMOVE ALL WALL DATA AND POWER OUTLETS IN ROOMS 037, 037A, 039, 040. TERMINATE BACK TO PANEL.
- J. REMOVE ALL CASEWORK, COUNTERTOPS, AND SHELVE IN ROOMS 037, 039, 040.
- K. TERMINATE GAS SYSTEMS TO CEILING, CAP AND SEAL. PRESSURE TEST AND RECERTIFY GAS SYSTEM FOLLOWING DEMOLITION.
- L. CONSTRUCTION BARRIER TO EXTEND FLOOR TO CEILING DECK, SEE DETAIL D1. FIRESTOP ALL PENETRATIONS MINIMUM 1 HOUR RATING.

- SEQUENCE OF EVENTS:
1. INSTALL CLOSERS ON CONSTRUCTION BARRIER DOORS TO ROOMS 037A, 038, 040, RE-KEY TO CONSTRUCTION LOCK.
 2. REMOVE AND WALL IN CONSTRUCTION BARRIER DOOR INTO ROOM 040, WALL MUST BE CLOSED SAME DAY DOOR REMOVED.
 3. FIRESTOP ANY PENETRATIONS AS NECESSARY IN CONSTRUCTION BARRIER.
 4. ESTABLISH INFECTION CONTROL MEASURES AT BOUNDARY.
 5. BEGIN DEMOLITION.
 6. DO NOT INSTALL NEW DOOR LEADING INTO ROOM 040 UNTIL NEW CEILING AND FIRE PROTECTION ARE INSTALLED AND DEMOLITION IS COMPLETE.

<div>UPDATED FROM PRELIM REVIEW</div> <div>Revisions</div>		CONSULTANTS:		ARCHITECT/ENGINEERS:		NORTH: <div></div>		<div>APPROVED:</div> <div>APPROVED:</div> <div>APPROVED:</div> <div>APPROVED:</div>		<div>Drawing Title</div> <div>DEMOLITION</div> <div>GROUND FLOOR</div> <div>08-1</div> <div>Approved: Director, VAH/HCS</div> <div>Approved: Chief of Engineering</div>		<div>Project Title</div> <div>LAB RENOVATION</div> <div>Location</div> <div>CASTLE POINT, NEW YORK</div> <div>Date</div> <div>9-7-10</div> <div>Checked</div> <div>Drawn</div> <div>JEF</div>		<div>Project Number</div> <div>620A4-10-238</div> <div>Building(s) Number</div> <div>19E</div> <div>Drawing Number</div> <div>AD-15-1</div> <div>SHEET 1 OF 21</div>		<div>Engineering Service</div> <div> Department of Veterans Affairs</div>	
--	--	--------------	--	----------------------	--	--------------------	--	---	--	---	--	---	--	--	--	--	--

three inches = one foot
one and one half inches = one foot
one inch = one foot
three quarters inch = one foot
one half inch = one foot
three eighths inch = one foot
one quarter inch = one foot
one eighth inch = one foot
one sixteenth inch = one foot



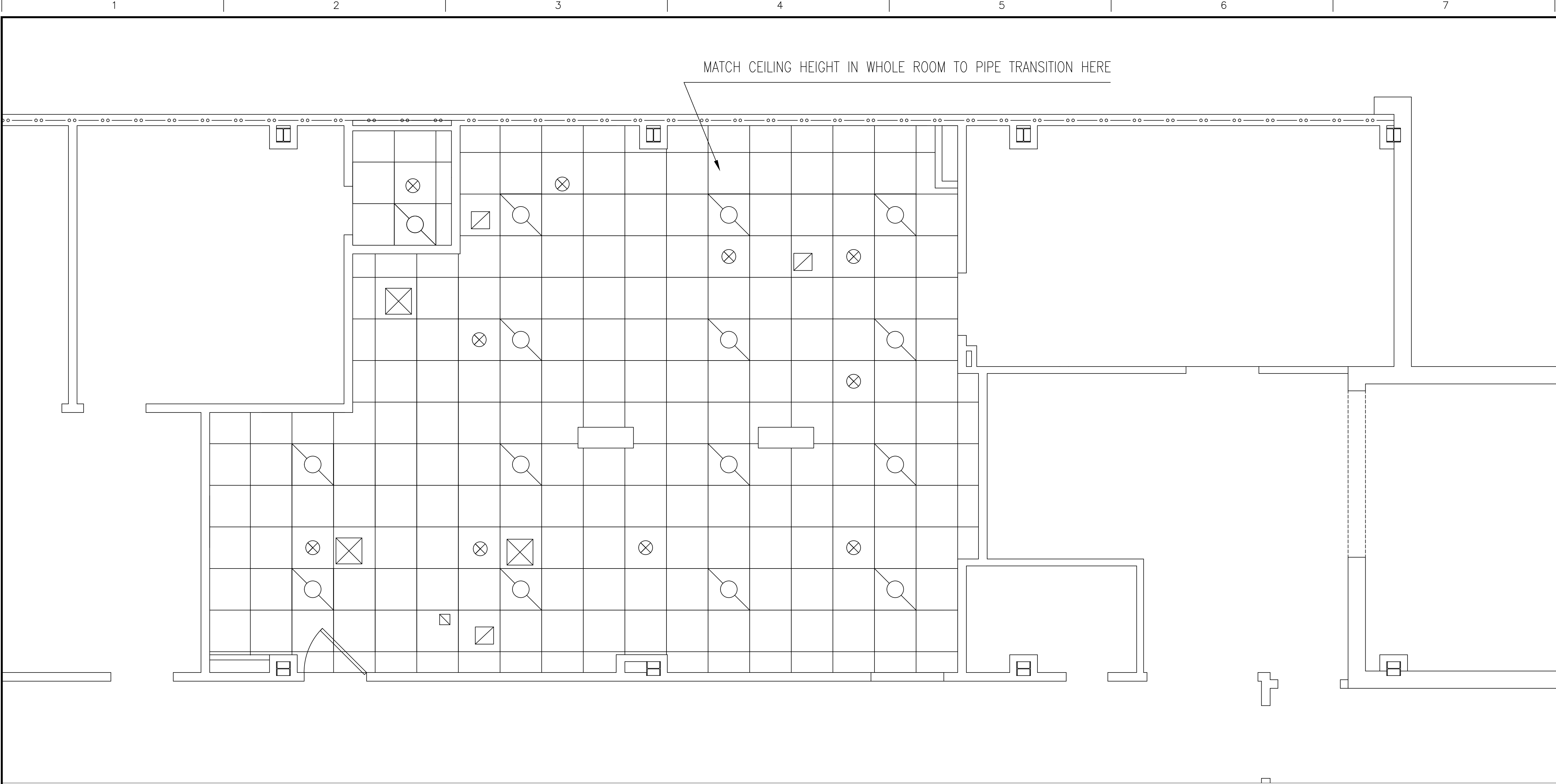
NOTES:

1. INSTALL WALL, (1) LAYER $\frac{5}{8}$ " GYPSUM WALL BOARD EACH SIDE PARALLEL TO $3\frac{5}{8}$ " 22 GAUGE METAL STUDS 16" OC, FROM FINISH FLOOR TO CEILING DECK. FINISH PER SCHEDULE. SEE SECTION A1 ON PAGE AS-15-2.
2. INSTALL WALL, (1) LAYER $\frac{5}{8}$ " GYPSUM WALL BOARD EACH SIDE PARALLEL TO $3\frac{5}{8}$ " 22 GAUGE METAL STUDS 16" OC, FROM FINISH FLOOR TO 42" AFF. FINISH PER SCHEDULE. SEE SECTION A2 ON PAGE AS-15-2.
3. CEILING IN ALL ROOMS EXCEPT 035 TO BE 8'-0" AFF. FINISH PER SCHEDULE. CEILING IN ROOM 035 TO BE OPEN.
4. ENCLOSE NON-RATED CHASE WITH (1) LAYER $\frac{5}{8}$ " GYPSUM WALL BOARD PARALLEL TO $3\frac{5}{8}$ " 22 GAUGE METAL STUDS 16" OC, FROM FINISH FLOOR TO 6" ABOVE FINISHED CEILING ON ROOM SIDE ONLY. FINISH PER SCHEDULE.

5. INSTALL NEW DOOR, SIZE TO MATCH EXISTING. DOOR TO BE 45 MINUTE RATED, $1\frac{3}{4}$ " SOLID WOOD. INCLUDE CLOSER. DOOR HARDWARE TO BE CORBIN RUSSWIN CL-3357-NZD-626-CL OR EQUAL.

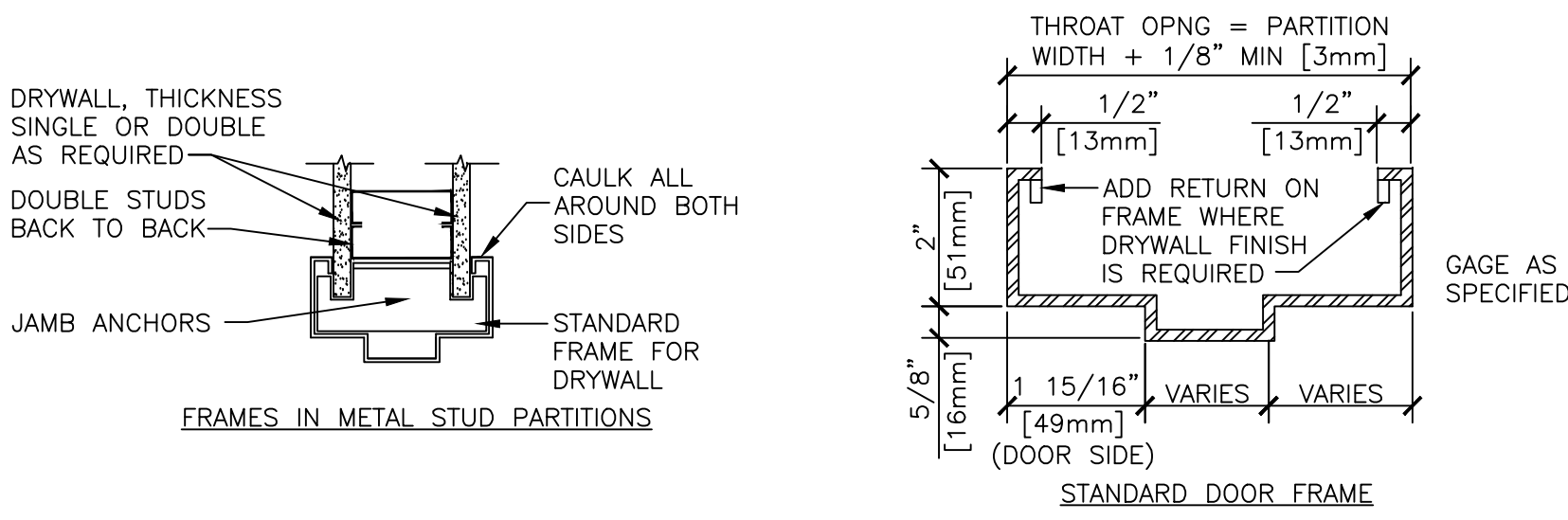
		CONSULTANTS:	ARCHITECT/ENGINEERS:	<div><div></div><div>N</div><div></div></div>		APPROVED:	Drawing Title	Project Title	Project Number	Engineering Service	
						CONSTRUCTION	LAB RENOVATION	620A4-10-238			
						GROUND FLOOR		Building(s) Number			
						W - 1		15E			
							Approved: Director , VAHVHCS	Location	Drawing Number		
								CASTLE POINT, NEW YORK	AS-15-1		
							Approved: Chief of Engineering	Date	Checked		Drawn
								9-7-10			JEF
UPDATED FROM PRELIM REVIEW		9-7-2010			APPROVED:	APPROVED:	Approved: Chief of Engineering	Date	Checked	Drawn	Department of Veterans Affairs
Revisions:		Date:									

three inches = one foot
one and one half inches = one foot
one inch = one foot
three quarters inch = one foot
one half inch = one foot
three eighths inch = one foot
one quarter inch = one foot
one eighth inch = one foot



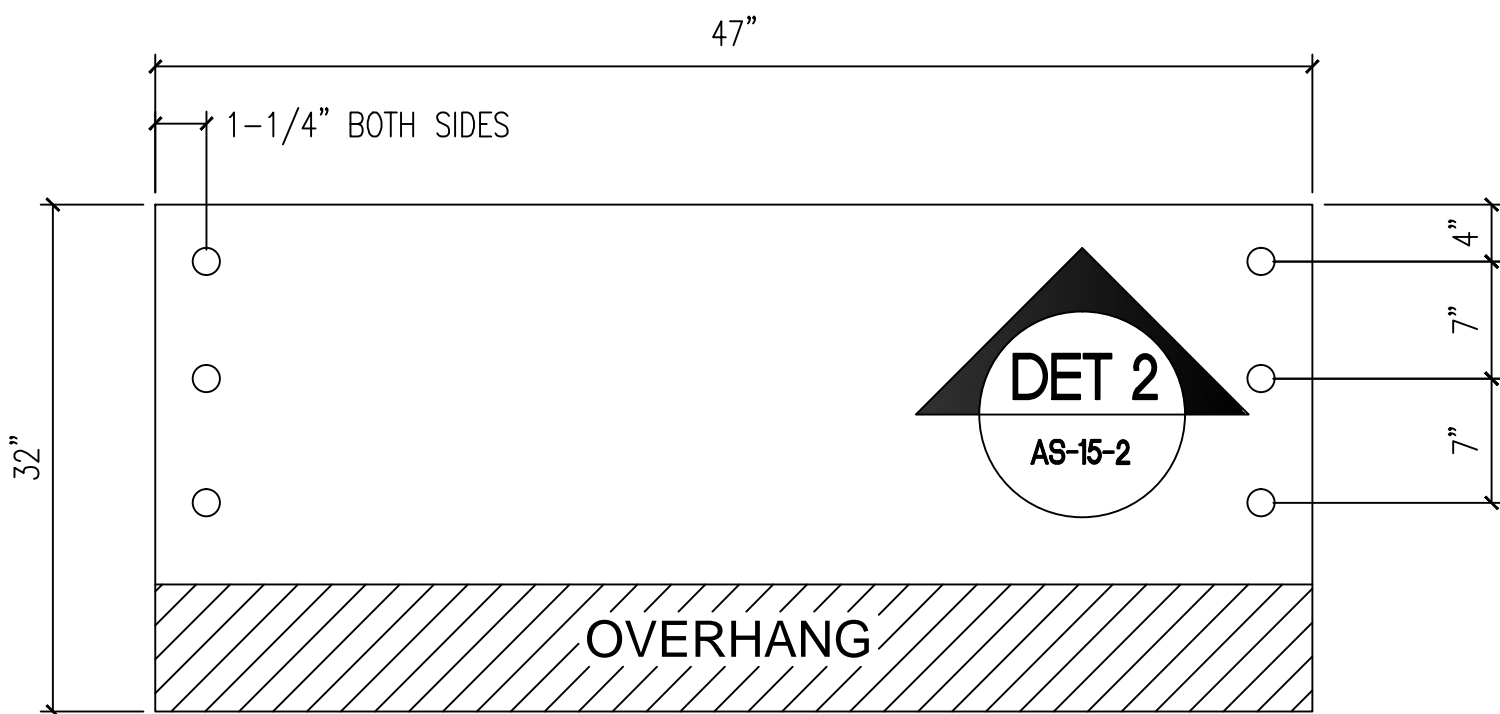
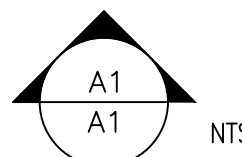
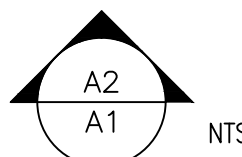
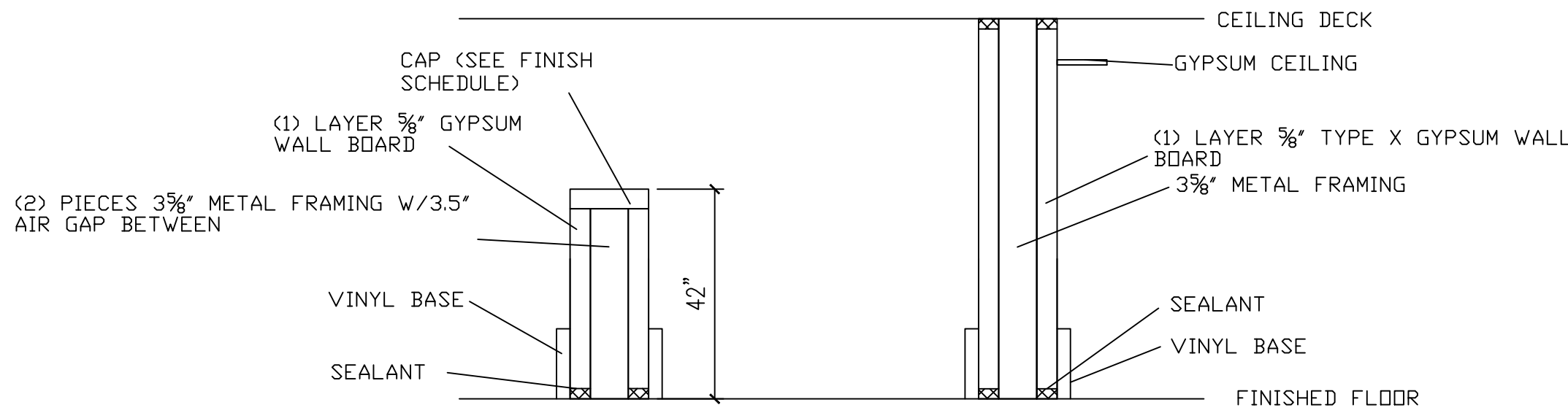
LEGEND

- PENDANT SPRINKLER HEAD
- 2'X2' LIGHT FIXTURE, TYPE A
- CEILING EXHAUST VENT
- CEILING SUPPLY VENT



INTERIOR DOOR FRAMES

NTS

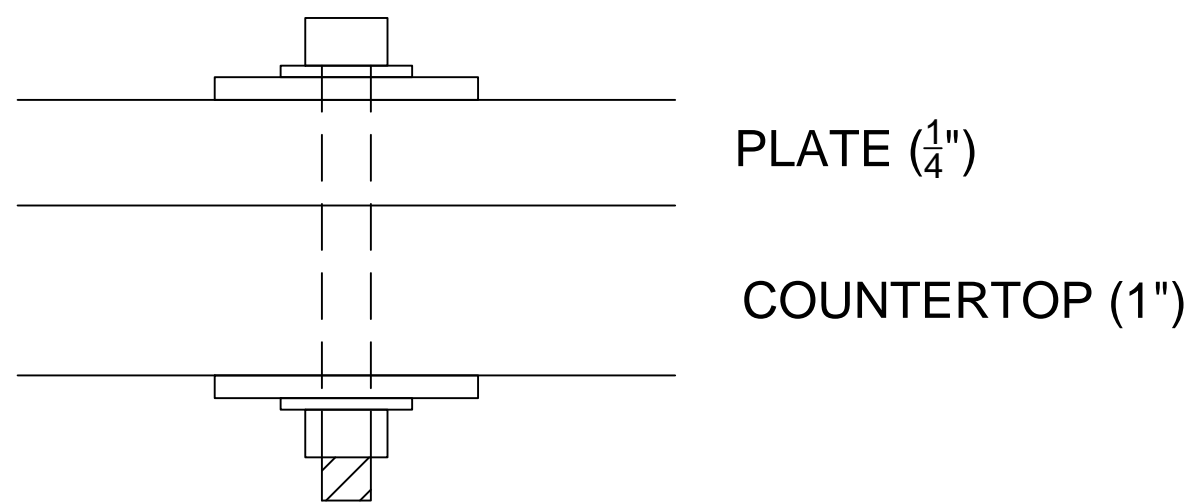


DET 1 PLATE TOP VIEW

F-15-1

NTS

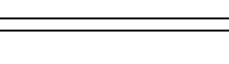
- NOTES:
1. ROUND CORNERS AND EDGES $\frac{1}{8}$ " OR LARGER RADIUS. DEBURR COMPLETE.
 2. MATERIAL TO BE $\frac{1}{4}$ " THICK STEEL.
 3. SECURE TO TABLE W/ (6) GRADE 5, $\frac{1}{2}$ "X20-2" BOLTS AS SHOWN IN THIS DETAIL AND DETAIL 2.



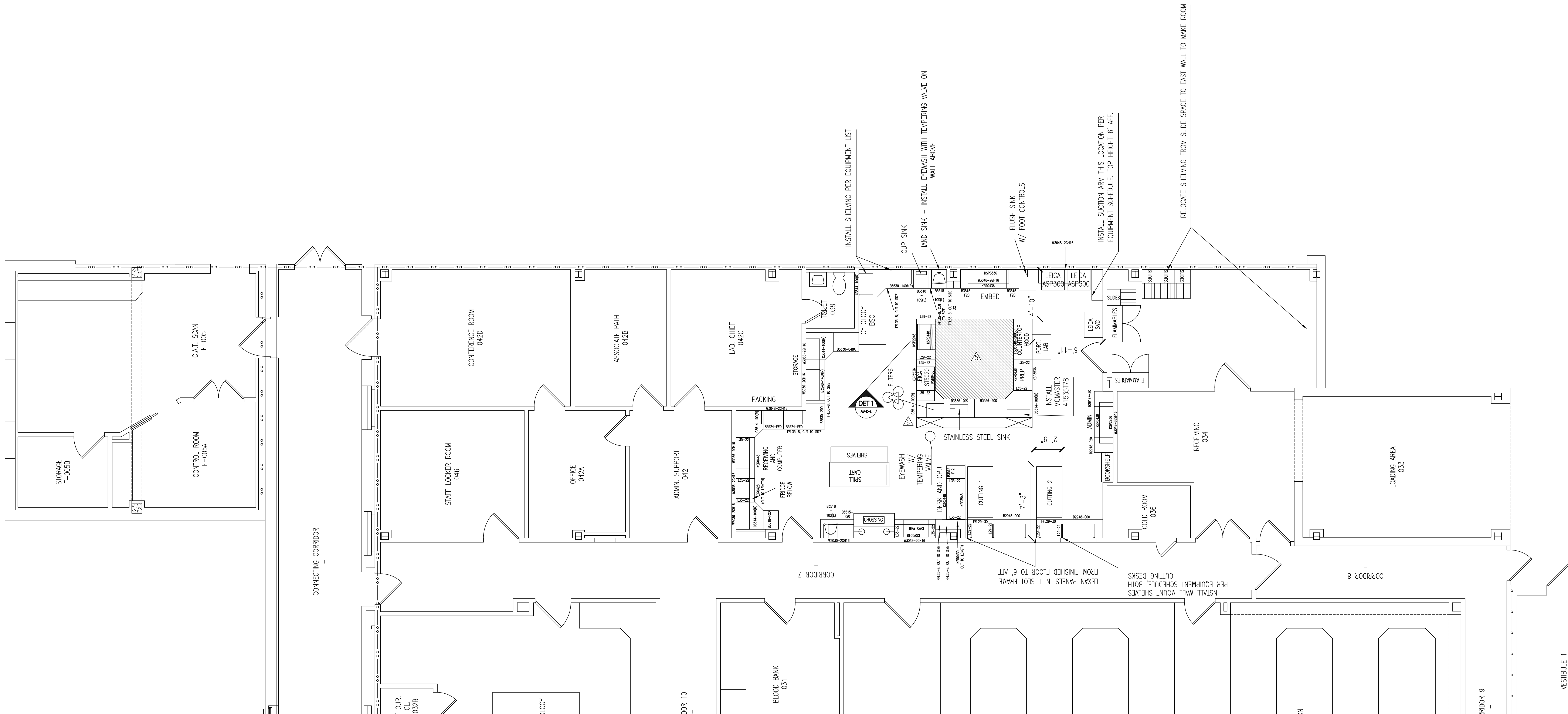
DET 2 BOLT INSTALLATION

AS-15-2

NTS

		CONSULTANTS:	ARCHITECT/ENGINEERS:	NORTH: <div></div>		APPROVED:	Drawing Title	Project Title	Project Number	Engineering Service Department of Veterans Affairs
						APPROVED:	CONSTRUCTION GROUND FLOOR <small>NONE</small>	LAB RENOVATION	620A4-10-238	
						APPROVED:			Building(s) Number	
						APPROVED:			15E	
							Approved Director , VAH/HCS	Location	Drawing Number	
					CASTLE POINT, NEW YORK	AS-15-2				
UPDATED FROM PRELIM REVIEW	9-7-2010		APPROVED:	APPROVED:	Approved: Chief of Engineering		Date	Checked	Drawn	
Revisions:	Date:						9-7-10		JEF	
									SHEET 3 OF 21	

three inches = one foot
one and one half inches = one foot
one inch = one foot
three quarters inch = one foot
one half inch = one foot
three eighths inch = one foot
one quarter inch = one foot
one eighth inch = one foot
one sixteenth inch = one foot

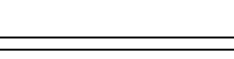


EQUIPMENT NOTES:

1. CONTRACTOR IS RESPONSIBLE FOR INSTALLATION AND RE-CERTIFICATION OF LAMINAR FLOW STATION, THE GROSSING STATION, THE CYTOLOGY STATION, AND THE STAINING WATER FILTERS. INSTALLATION MUST BE BY OEM APPROVED PERSONNEL. THIS EQUIPMENT WILL BE PROVIDED BY THE VA.
2. CONTRACTOR IS RESPONSIBLE FOR PURCHASE, SUPPLY, INSTALLATION, AND CERTIFICATION OF PREP HOOD SHOWN IN "HORSESHOE" AREA. INSTALLATION MUST BE BY OEM APPROVED PERSONNEL.
3. CONTRACTOR IS RESPONSIBLE FOR PURCHASE, SUPPLY, AND INSTALLATION OF ALL CASEWORK.

GENERAL NOTES:

1. ALL CASEWORK TO BE METAL. ALL COUNTERTOP TO BE PHENOLIC.
2. ALL WALLMOUNT CASEWORK TO BE INSTALLED WITH A BOTTOM HEIGHT 54 " AFF.
3. ALL SINKS TO BE STAINLESS STEEL.
4. INSTALL MOUNTING PLATE FOR DOWNDRAFT UNIT, SEE DETAILS 1 AND 2 ON DRAWING A2.
5. FLOOR TILE IN THIS AREA TO BE VCT1 (SEE 090600), REMAINDER TO BE VCT2.
6. METAL CASEWORK IN THIS "HORSESHOE" TO BE E-6320 DEEP BLUE. REMAINDER TO BE E-2731 PLATINUM.

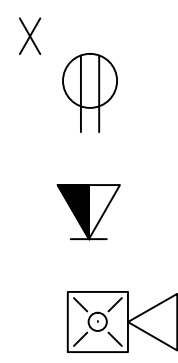
		CONSULTANTS:	ARCHITECT/ENGINEERS:	NORTH: <div></div>		APPROVED:	Drawing Title	Project Title	Project Number	Engineering Service	
						APPROVED:	FLOOR PLAN	LAB RENOVATION	620A4-10-238		
						APPROVED:	GROUND FLOOR		Building(s) Number		
						APPROVED:	9F-1		15E		
						APPROVED:	Approved Director , VAH/HCS	Location	Drawing Number		
						APPROVED:		CASTLE POINT, NEW YORK	IF-15-1		
UPDATED FROM PRELIM REVIEW	9-7-2010				APPROVED:	APPROVED:	Approved: Chief of Engineering	Date	Checked	Drawn	Department of Veterans Affairs
Revisions	Date:							9-7-10		JEF	
											SHEET 4 OF 21

6

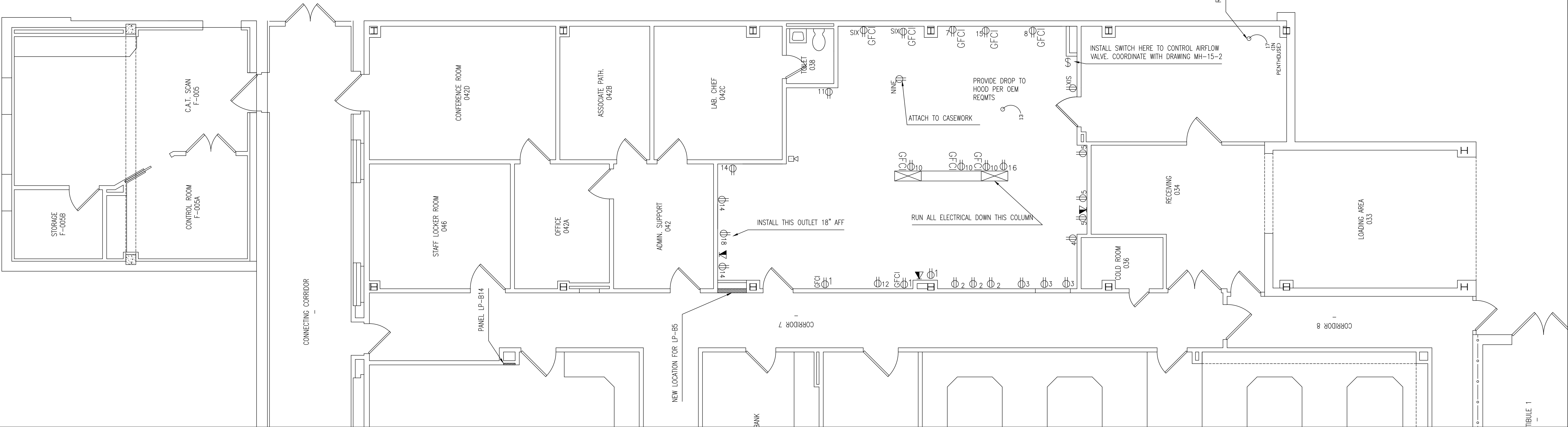
6



LEGEND



DUPLEX OUTLET, X DENOTES CKT
COMMUNICATION PORT, 2 DATA, 2 PHONE
FIRE ALARM, HORN/LIGHT, ONE ASSEMBLY



NOTES:

- 1. RUN CIRCUITS M1 THROUGH M5 BEFORE REMOVING PANEL LP-B5 FROM SERVICE. FOR REDUNDANT CIRCUITS ON CONDENSORS, MOVE ONE AT A TIME AND RESTORE SERVICE PRIOR TO MOVING NEXT.
- 2.INSTALL ALL OUTLETS 42" AFF UNLESS OTHERWISE NOTED.
- 3. FIRESTOP ALL CEILING, FLOOR, AND FIREWALL PENETRATIONS MIN. 2 HOUR RATING.
- 4. STROBE ALARM TO BE INSTALLED BY NY STATE LICENSED FIRE ALARM CONTRACTOR.

		CONSULTANTS:	ARCHITECT/ENGINEERS:	NORTH: 	APPROVED:		Drawing Title POWER PLAN GROUND FLOOR 10'-1	Project Title LAB RENOVATION		Project Number 620A4-10-238		Engineering Service Department of Veterans Affairs
					APPROVED:			Building(s) Number 15E				
					APPROVED:			Location CASTLE POINT, NEW YORK		Drawing Number ES-15-2		
					APPROVED:			Date 9-7-10		Checked JEF		
UPDATED FROM PRELIM REVIEW Revisions:					9-7-2010 Date:			Approved: Chief of Engineering		SHEET 6 OF 21		

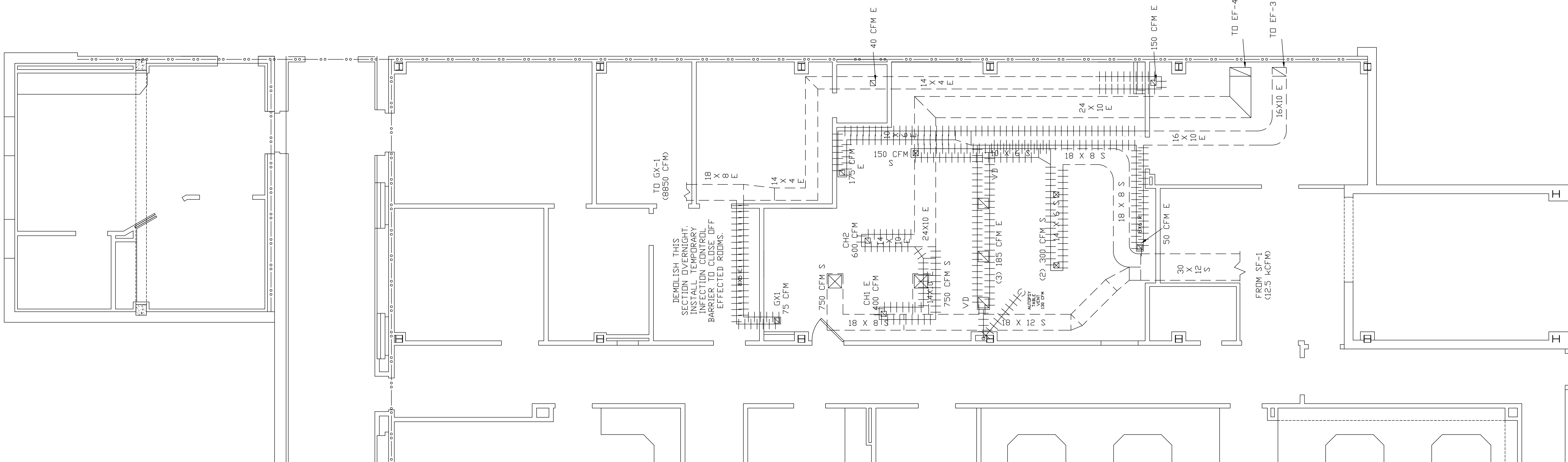
1	2	3	4	5	6	7	8	9	10
---	---	---	---	---	---	---	---	---	----

EXISTING DUCTWORK

CEILING EXHAUST VENT

CEILING SUPPLY VENT

TO BE DEMOLISHED

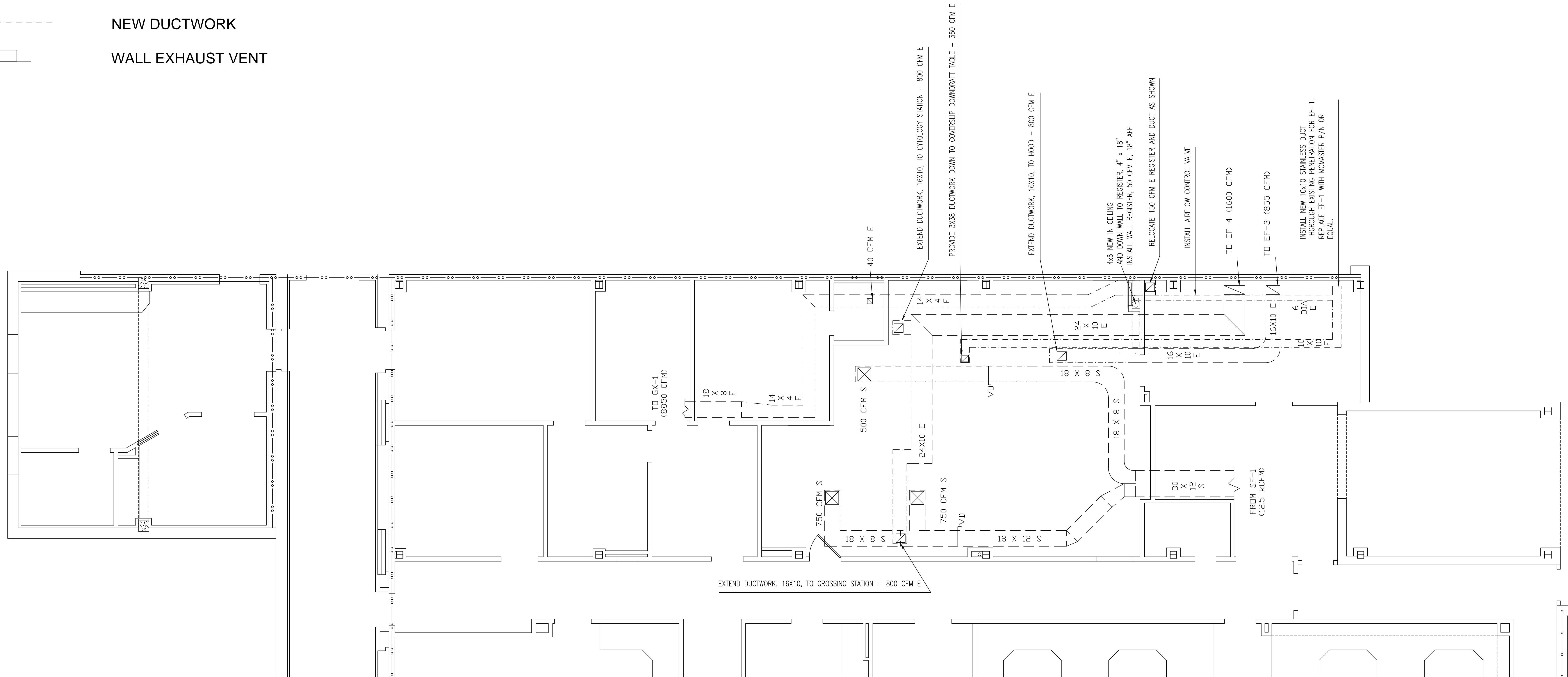
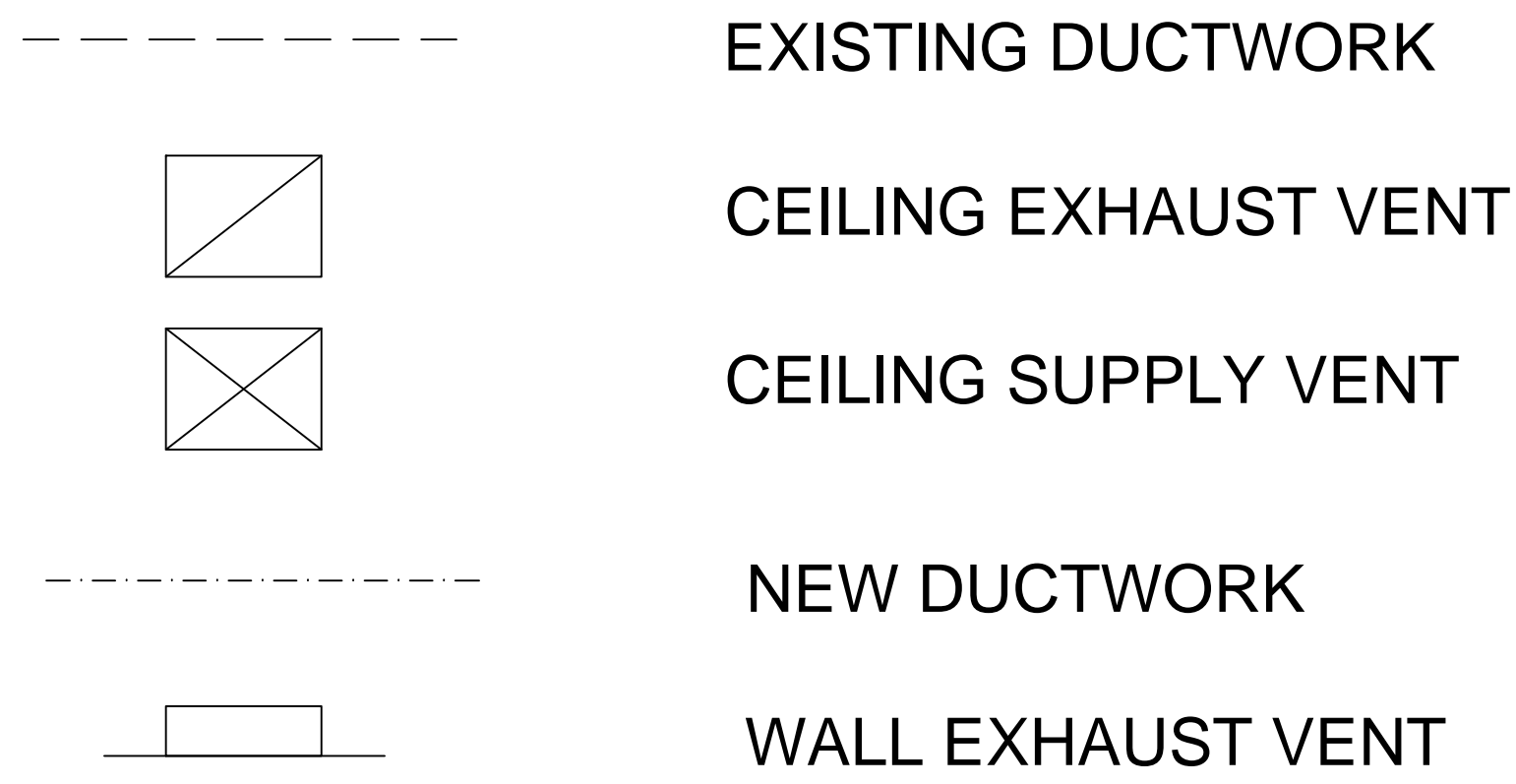


NOTES:

1. SEAL AND INSULATE DUCTWORK AS REQUIRED AFTER DEMOLITION.
2. REPLACE EXHAUST FAN 1 WITH MCMASTER P/N 2105K14 OR EQUAL. DEMOLISH DUCTWORK AS REQUIRED FOR PENETRATION ACCESS ONLY. COORDINATE CONTROL WITH DRAWING E-2.
3. FIRESTOP ALL CEILING, FLOOR, AND FIREWALL PENETRATIONS MIN. 2 HOUR RATING.

[illegible]

1	2	3	4	5	6	7	8	9	10
---	---	---	---	---	---	---	---	---	----





NOTES:

1. REVERIFY FLOW ON ALL HOODS FOLLOWING INSTALLATION.
2. LOCATIONS APPROXIMATE, COORDINATE WITH DRAWING A-2.
4. ALL DIFFUSERS 4-WAY.
5. ALL NEW EXHAUST DUCTWORK TO BE STAINLESS STEEL. ALL NEW SUPPLY DUCTWORK TO BE GALVANIZED.
6. FIRESTOP ALL CEILING, FLOOR, AND FIREWALL PENETRATIONS MIN. 2 HOUR RATING.
7. REPLACE ALL REGISTERS AND DIFFUSERS IN ROOM TO MATCH.

CEILING REGISTER SCHEDULE				CEILING DIFFUSER SCHEDULE				
AIR FLOW RANGE (CFM)	EQUIVALENT ROUND NECK SIZE (IN DIAMETER)	NOISE CRITERIA (dBA)	REMARKS	AIR FLOW RANGE (CFM)	EQUIVALENT ROUND NECK SIZE (IN DIAMETER)	MIN-MAX THROW DISTANCES (FT)	NOISE CRITERIA (dBA)	REMARKS
0-150	8X8	< 20		0-100	6	1-5	< 20	
160-250	12X12	< 20		101-200	8	3-9	< 20	
260-350	14X14	< 20		201-300	10	3-11	< 20	
360-500	16X16	< 20		301-450	12	5-15	< 20	
510-800	18X18	< 20		451-600	14	6-16	< 20	
				601-800	15	8-20	< 20	
1. PROVIDE DUCT MOUNTED MANUAL VOLUME DAMPERS AS SHOWN								

1. PROVIDE DUCT MOUNTED MANUAL VOLUME DAMPERS AS SHOWN

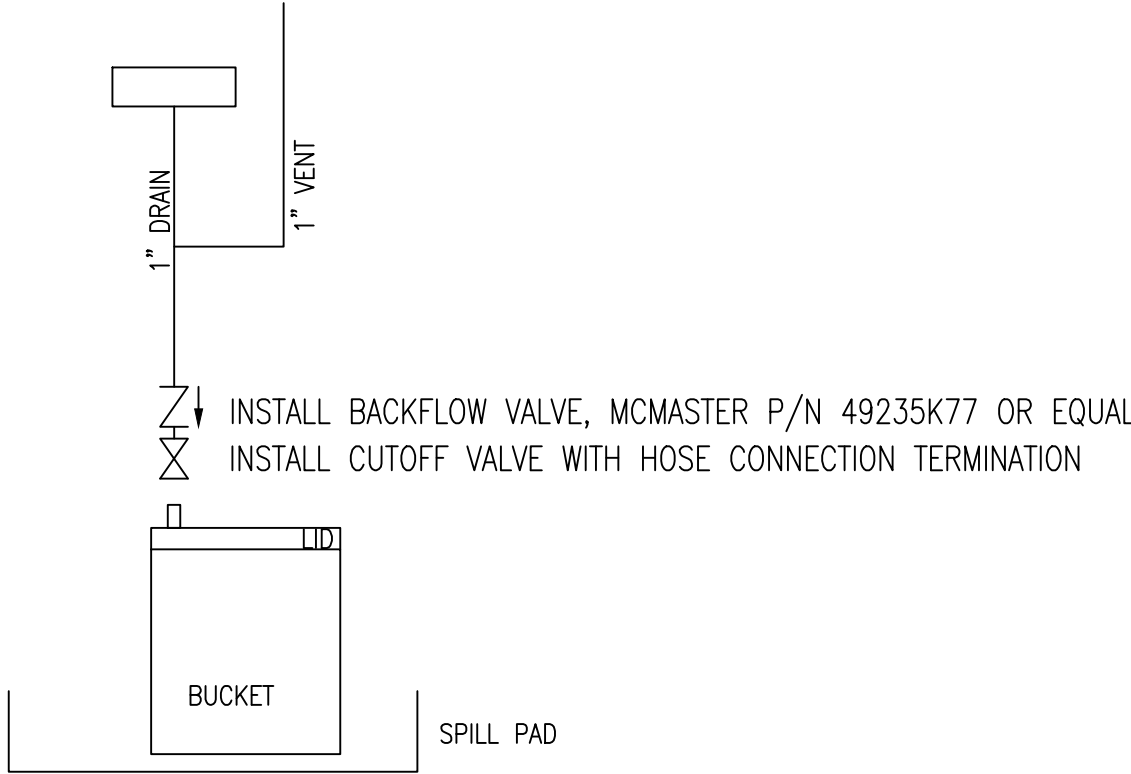
		CONSULTANTS:	ARCHITECT/ENGINEERS:	NORTH: 		APPROVED:	Drawing Title	Project Title		Project Number	<div>Engineering Service</div> <div>  Department of Veterans Affairs </div>
					MECHANICAL CONSTRUCTION	LAB RENOVATION		620A4-10-238			
					GROUND FLOOR			Building(s) Number			
								15E			
					APPROVED: DIRECTOR, VAH/VHCS	Location		Drawing Number			
						CASTLE POINT, NEW YORK		MH-15-2			
UPDATED FROM PRELIM REVIEW	9-7-2010				APPROVED:	APPROVED:	Approved Chief of Engineering	Date	Checked	Drawn	SHEET 9 OF 21
Revisions:	Date:							9-7-10		JEF	

Department of
Veterans Affairs

LEGEND

- VENT PIPING
- SANITARY SEWER
- HOT WATER
- COLD WATER
- VERTICAL PIPE, TYPE AS NOTED

DET P1 DRAIN SCHEMATIC
NTS

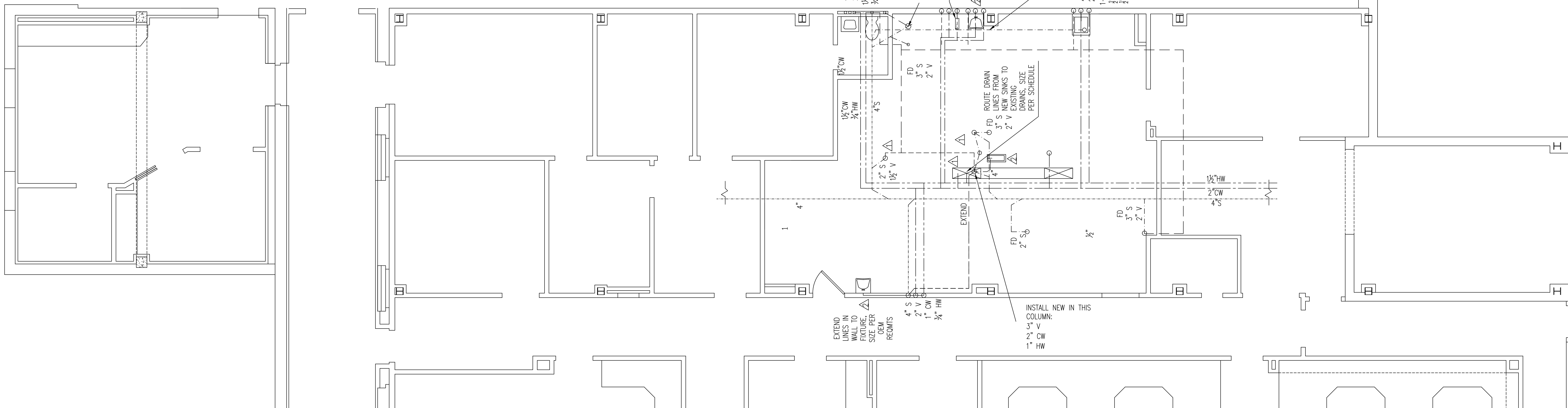


- NOTES:
1.

INSTALL NEW LINE, TYPE AND SIZE AS SHOWN.
2.

INSTALL NEW LINES FOR SINK PER MANUFACTURER CUTSHEET. INSTALL PIPING IN FURRED WALL AS REQUIRED.
3.

FIRESTOP ALL CEILING, FLOOR, AND FIREWALL PENETRATIONS MIN. 2 HOUR RATING.



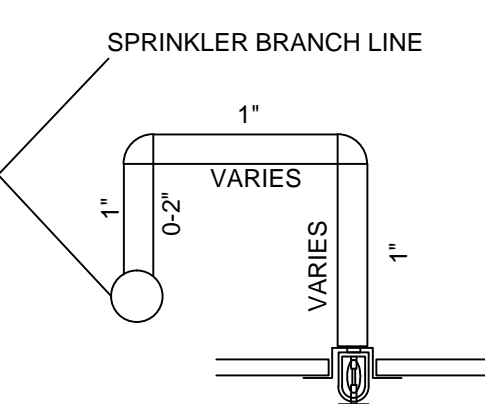
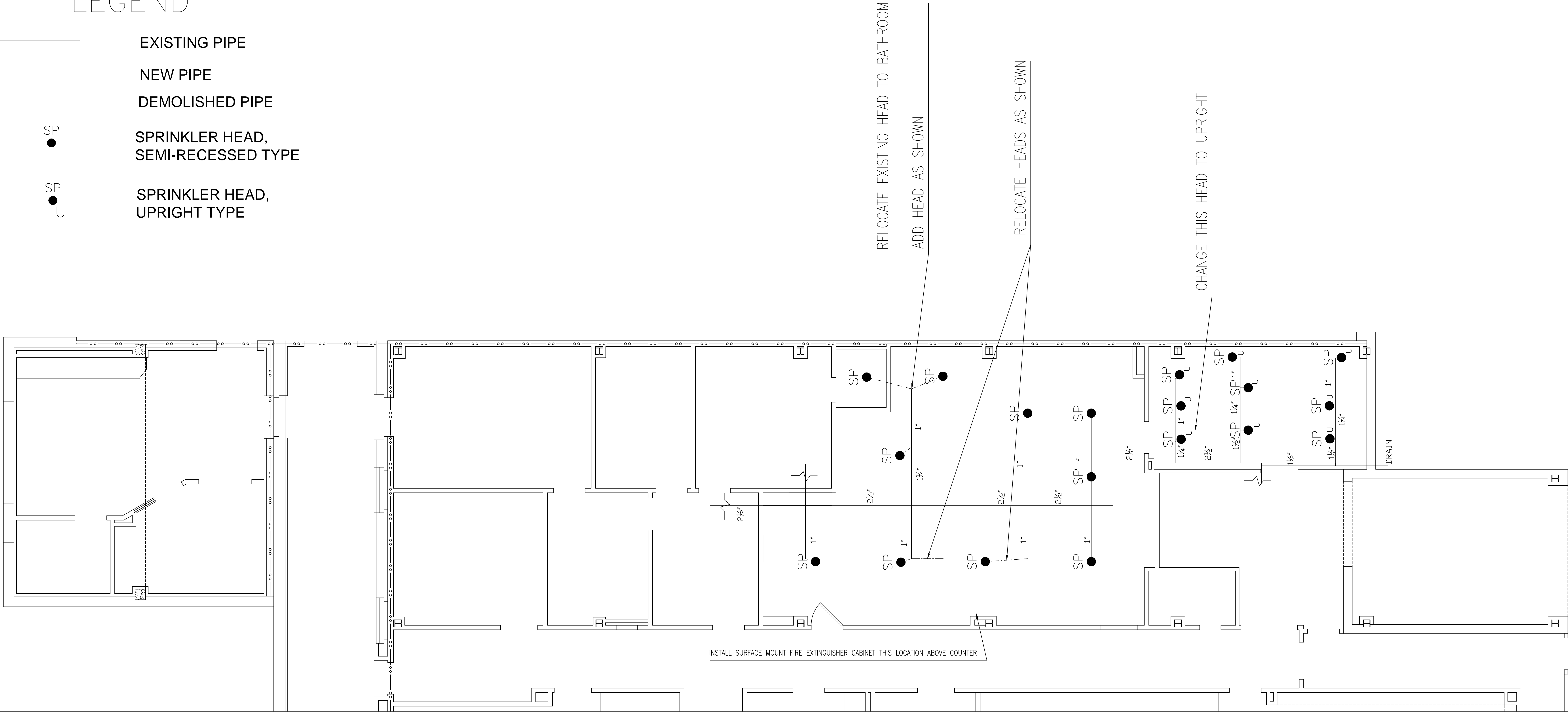
		CONSULTANTS:	ARCHITECT/ENGINEERS:	NORTH: 			APPROVED:	Drawing Title PLUMBING CONSTRUCTION GROUND FLOOR 10E	Project Title LAB RENOVATION		Project Number 620A4-10-238		<div>Engineering Service</div> <div>Department of Veterans Affairs</div>
							APPROVED:		Location CASTLE POINT, NEW YORK		Building(s) Number 10E		
							APPROVED:	Approved: Director , VAHVHCS	Date 9-7-10		Drawing Number PL-15-2		
							APPROVED:	Approved: Chief of Engineering	Checked JEF		SHEET 11 OF 21		
UPDATED FROM PRELIM REVIEW Revisions		9-7-2010 Date:											

LEGEND

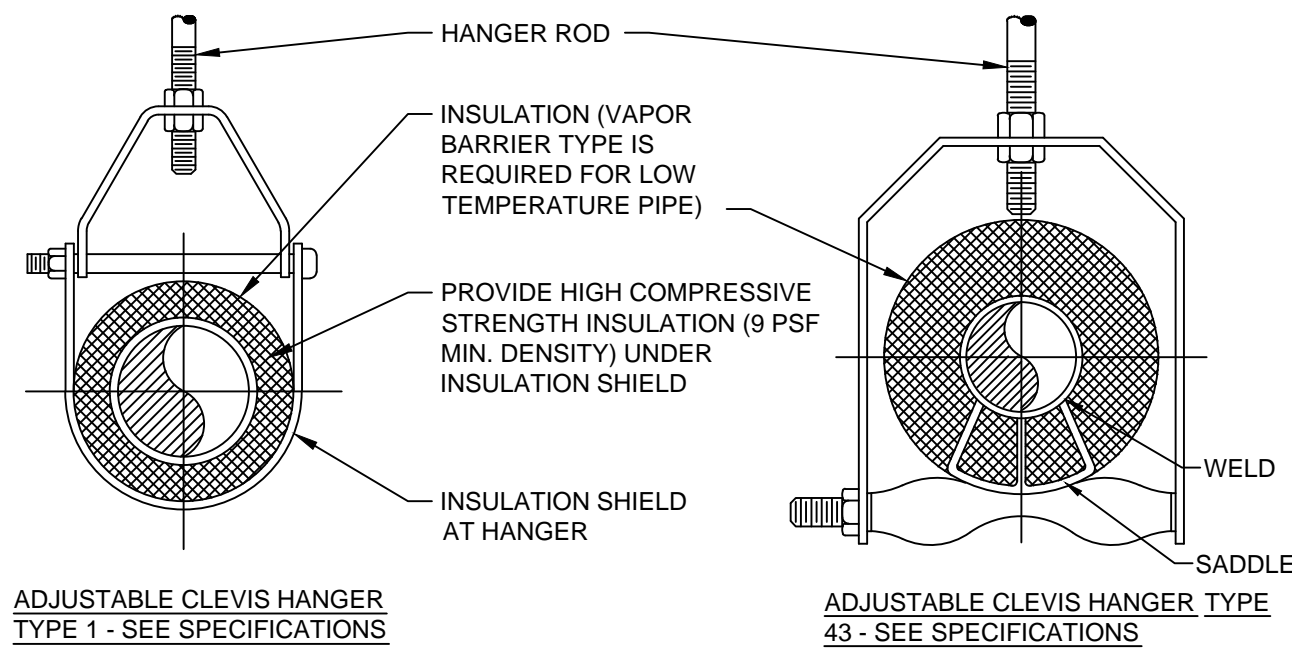
- EXISTING PIPE
- NEW PIPE
- DEMOLISHED PIPE
- SP

SPRINKLER HEAD, SEMI-RECESSED TYPE
- SP

SPRINKLER HEAD, UPRIGHT TYPE



TYPICAL PENDANT
SPRINKLER DROP DETAIL



PIPE HANGERS

BUILDING 15E - OUTPATIENT - FULLY SPRINKLERED
GROUND FLOOR - Existing Business Occupancy - NFPA 101 - Chapter 39
GROUND FLOOR Hazard - Ordinary
Occupancy Load - 100 sf/ person - Table 7.3.1.2
39.2.5.2 Dead End Not to exceed 50 ft.
39.2.5.3.1 Common Path - Not exceed 100 ft
39.2.6.1 Travel to Exit - Not to exceed 300 ft

- NOTES:
- ALL FIRE PROTECTION WORK WILL BE IN ACCORDANCE WITH NFPA-13 AND NFPA-14.
 - ALL SPRINKLER HEADS TO BE SEMI--RECESSED OR UPRIGHT QUICK RESPONSE TYPE, 1/2" ORIFICE, 155 F TEMPERATURE RATED.
 - DEMOLISH ALL EXISTING SPRINKLER HEADS AND REPLACE WITH NEW IN LOCATIONS SHOWN FOR ROOMS MODIFIED.

		CONSULTANTS:	ARCHITECT/ENGINEERS:	NORTH: <div></div>		APPROVED:	Drawing Title	Project Title	Project Number	Engineering Service	
						SPRINKLERS	LAB RENOVATION	620A4-10-238			
						GROUND FLOOR		Building(s) Number			
						10E		15E			
					APPROVED:	APPROVED:	Approved Director , VAHVHCS:	Location	Drawing Number		
								CASTLE POINT, NEW YORK			
					APPROVED:	APPROVED:	Approved Chief of Engineering	Date	Checked	Drawn	FA-15-1
								9-7-10		JEF	
UPDATED FROM PRELIM REVIEW	9-7-2010										
Revisions:	Date:										