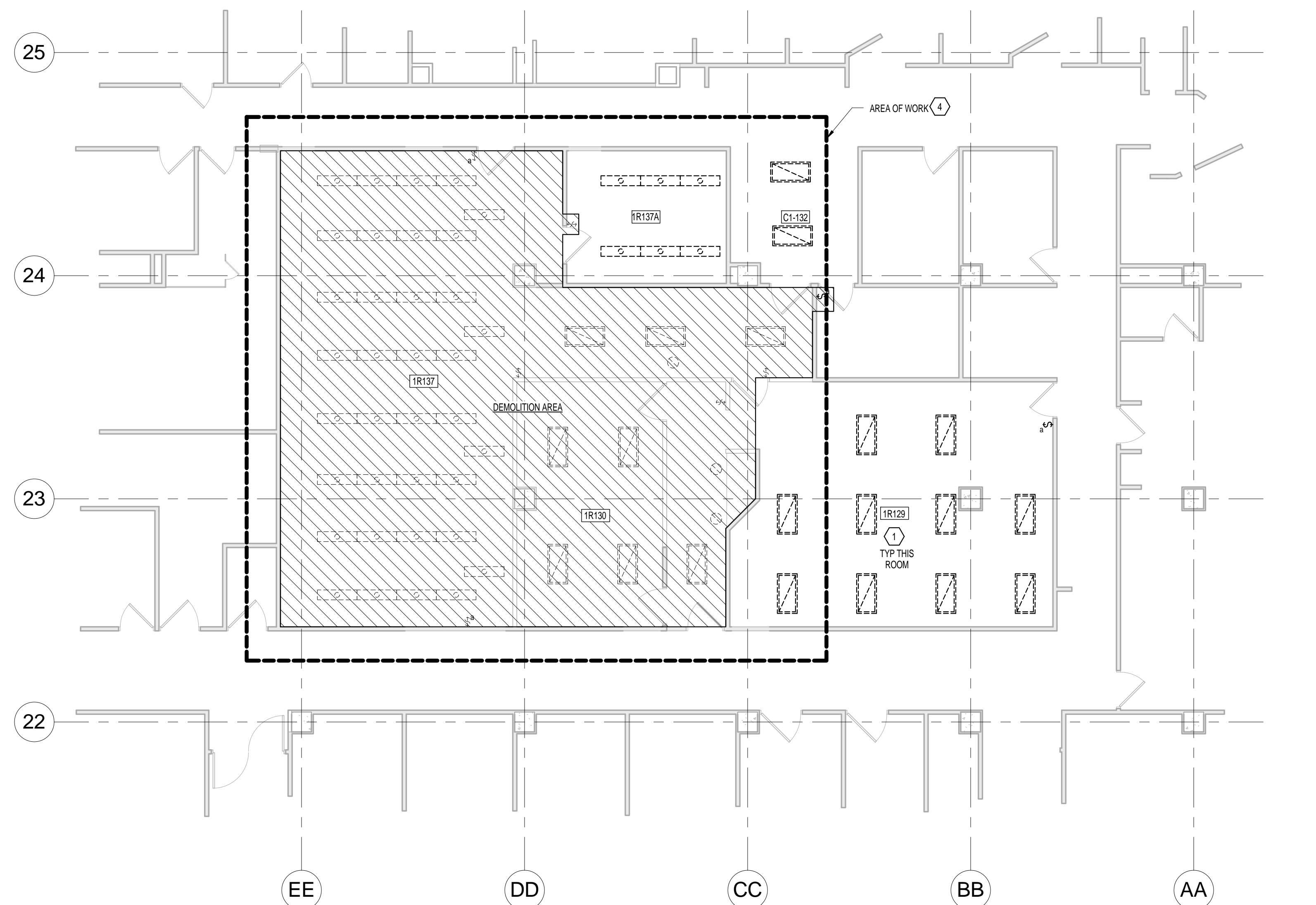


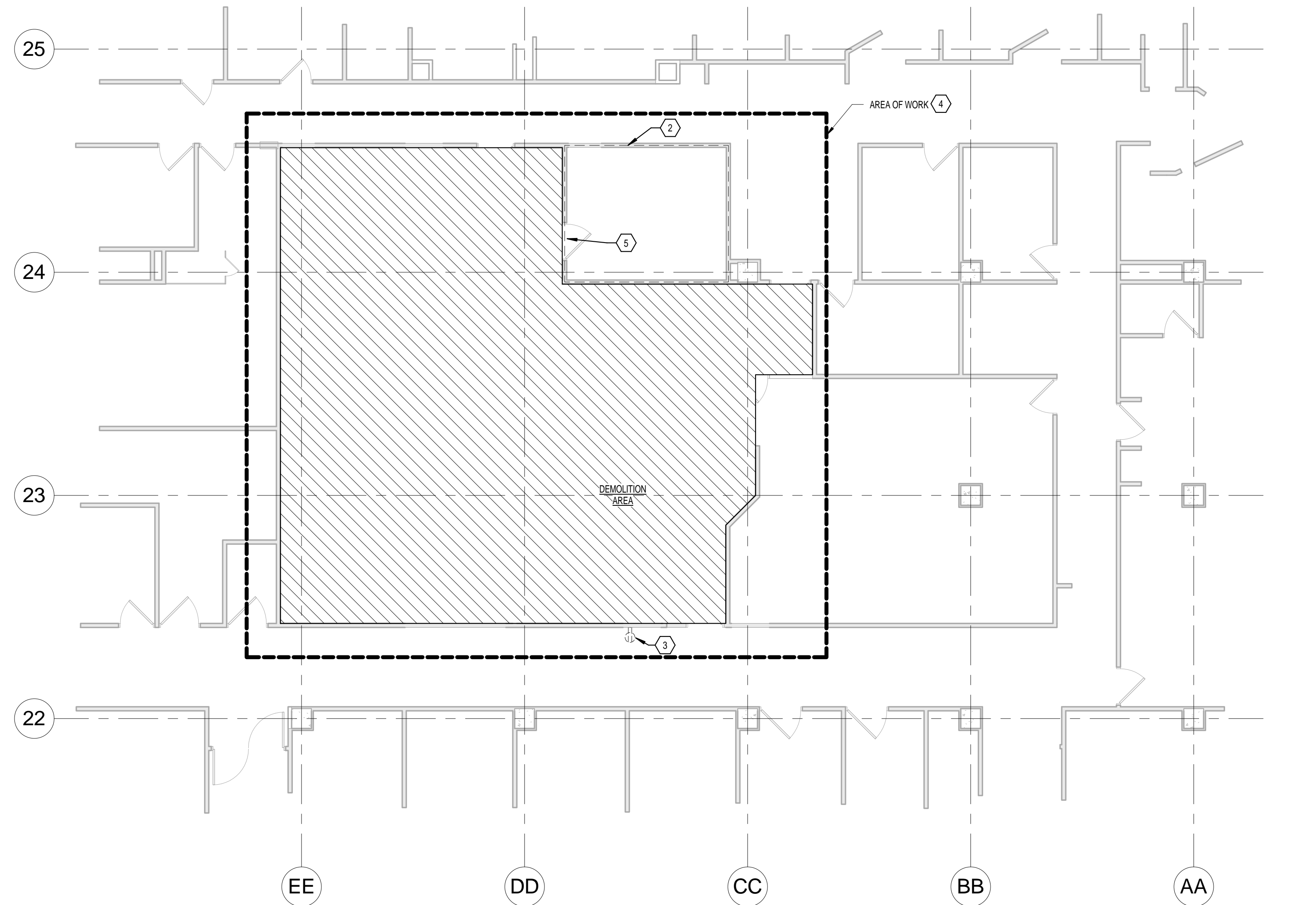


- GENERAL SHEET NOTES**
- A. SEE ARCHITECTURAL DRAWINGS AND SPECIFICATIONS FOR PHASES OF DEMOLITION AND CONSTRUCTION. COORDINATE WITH GENERAL CONSTRUCTION.
- B. DISCONNECT AND REMOVE ALL ELECTRICAL DEVICES AND LIGHTING FIXTURES IN DEMOLITION AREAS UNLESS NOTED OTHERWISE. CUT-OUT CONDUITS AT THE AREA OF WORK PERIMETER AND REMOVE CONDUIT WITHIN THE WORK AREA. DISCONNECT WIRING AT THE OVERCURRENT PROTECTIVE DEVICE AND REMOVE WIRING COMPLETELY FROM THE ABANDONED CONDUITS.
- C. DISCONNECT AND REMOVE ALL ELECTRICAL DEVICES IN WALLS TO BE DEMOLISHED. WALLS TO BE DEMOLISHED ARE SHOWN DASHED. DISCONNECT AND REMOVE ASSOCIATED CONDUIT AND WIRE BACK TO LAST REMAINING DEVICE. REMOVE ALL ACCESSIBLE ABANDONED WIRING OF ALL TYPES, OR CAP AND LABEL IN JUNCTION BOX FOR RE-USE. IN COMPLIANCE WITH THE NATIONAL ELECTRIC CODE, FURNISH AND INSTALL CONDUIT AND WIRE AS NECESSARY FOR CONTINUITY OF CIRCUITS TO ANY EXISTING DEVICES TO REMAIN. COORDINATE AND VERIFY REQUIREMENTS WITH NEW WORK IN AREA.
- D. FURNISH AND INSTALL CONDUIT AND WIRE AS NECESSARY FOR CONTINUITY OF ANY FEEDERS OR BRANCH CIRCUITS ORIGINATING OUTSIDE THE DEMOLITION AREA THAT SERVE ANY ELECTRICAL EQUIPMENT OR DEVICES TO REMAIN AFTER DEMOLITION. ENSURE SUCH CIRCUITS REMAIN OPERATIONAL THROUGHOUT DEMOLITION AND CONSTRUCTION. MODIFY OR REPLACE AS REQUIRED.
- E. FURNISH AND INSTALL CONDUIT AND/OR COMMUNICATIONS/ DATA WIRING AS NECESSARY FOR CONTINUITY OF ANY WIRING ORIGINATING OUTSIDE THE DEMOLITION AREA THAT SERVE ANY COMMUNICATIONS/ DATA EQUIPMENT OR DEVICES TO REMAIN AFTER DEMOLITION. ENSURE SUCH DEVICES REMAIN OPERATIONAL THROUGHOUT DEMOLITION AND CONSTRUCTION. MODIFY OR REPLACE AS REQUIRED.
- F. DISCONNECT AND REMOVE LIGHT SWITCHES IN DEMOLITION AREAS AS NECESSARY TO ACCOMMODATE NEW DOOR CONFIGURATIONS.
- G. DISCONNECT AND REMOVE ANY EXISTING ELECTRICAL DEVICES AND BACK BOXES AS NECESSARY WHERE NEW WALL CONSTRUCTION WILL INTERSECT AN EXISTING WALL. FURNISH AND INSTALL CONDUIT AND WIRE AS REQUIRED FOR CONTINUITY OF CIRCUITS.
- H. FURNISH AND INSTALL BLANK COVER PLATES OVER ALL EXISTING UNUSED OPENINGS.

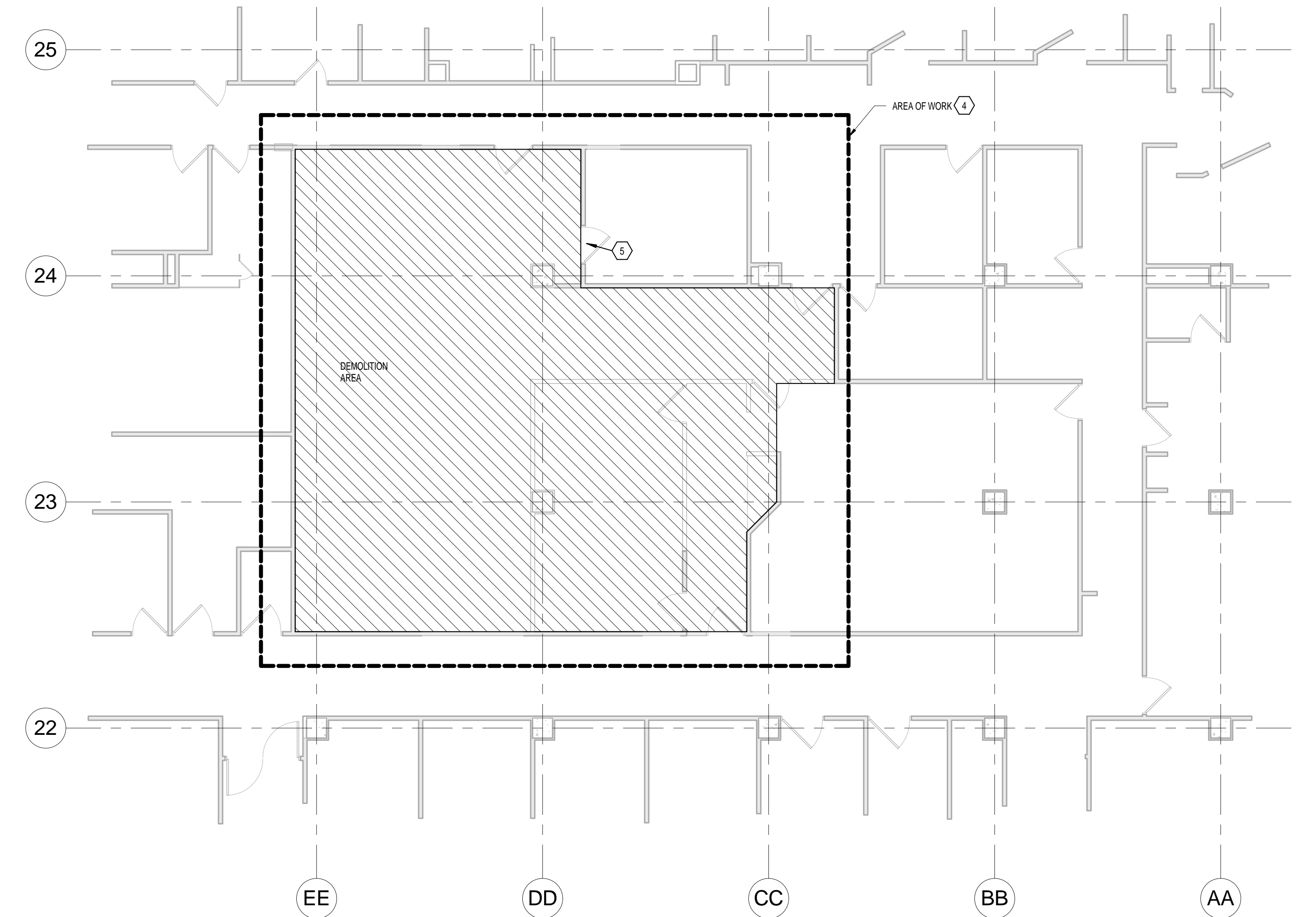
- KEYED SHEET NOTES**
1. EXISTING LIGHTING TO REMAIN.
2. PROTECT EXISTING ELECTRICAL AT RADIOLOGY SERVER ROOM.
3. DISCONNECT AND CONNECT TO CIRCUIT INDICATED. SEE LEVEL 1 - POWER PLAN - AREA L.
4. DISCONNECT AND REMOVE ELECTRICAL, COMMUNICATION, FIRE ALARM, OTHER EQUIPMENT, DEVICES, RACEWAY, BOXES, CONDUCTORS, AND CABLE IN AREA OF SHADED AREA OF DEMOLITION.
5. SEE ELECTRONIC SAFETY AND SECURITY PLAN, AREA L AND SECURITY AND ACCESS CONTROL DIAGRAM FOR SECURITY ACCESS CONTROL DEVICES TO BE RELOCATED AND EXTENDED AND NEW DEVICES REQUIRED IN EXISTING SERVER ROOM.



1 LEVEL 1 - ELECTRICAL LIGHTING DEMOLITION PLAN  
1/8" = 1'-0"



2 LEVEL 1 - ELECTRICAL POWER DEMOLITION PLAN  
1/8" = 1'-0"



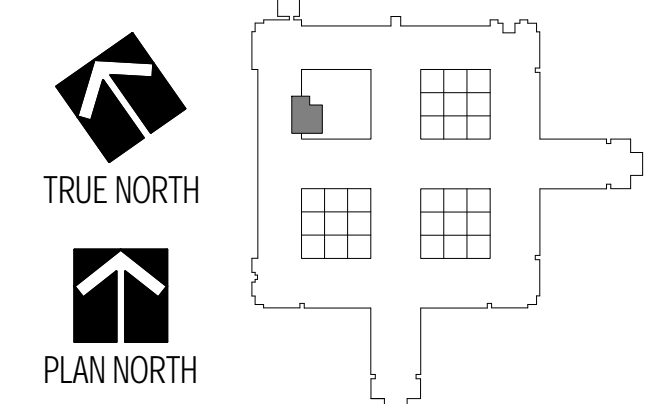
3 LEVEL 1 - ELECTRICAL SYSTEMS AND ELECTRONIC SAFETY AND SECURITY DEMOLITION PLAN  
1/8" = 1'-0"

**GENERAL NOTES:**

GENERAL CONTRACTOR AND/OR ALL SUBCONTRACTORS SHALL FIELD VERIFY ALL DIMENSIONS SHOWN ON THESE PLANS AND SHALL BE RESPONSIBLE FOR VARIATIONS BETWEEN PLAN DIMENSIONS AND ACTUAL FIELD DIMENSIONS. WHERE VARIATIONS ARE FOUND TO OCCUR, THE CONTRACTOR SHALL NOTIFY THE PROJECT ENGINEER IN WRITING PRIOR TO PROCEEDING WITH CONSTRUCTION. NO ADJUSTMENT TO THE WORK WILL BE MADE WITHOUT THE PRIOR APPROVAL OF THE PROJECT ENGINEER.

GENERAL CONTRACTOR SHALL BE RESPONSIBLE FOR GENERAL DEMOLITION INCLUDING REMOVAL OF WALLS, PARTITIONS, DOORS & CEILING & FLOORS. ANY AND ALL CUTTING OF CONCRETE FLOORS, WALLS OR STRUCTURE SHALL BE THE GENERAL CONTRACTOR'S RESPONSIBILITY. CORE DRILLING THROUGH CONCRETE WALLS, FLOORS OR STRUCTURE FOR PIPING OR CONDUIT SHALL BE THE RESPONSIBILITY OF THE SUBCONTRACTOR BY TRADE. FIRESTOPPING OF THESE OPENING SHALL BE DONE BY THE RESPECTIVE SUBCONTRACTOR. REMOVAL OF DEBRIS RESULTING FROM DEMOLITION, CUTTING, AND/OR DRILLING IS THE RESPONSIBILITY OF THE GENERAL CONTRACTOR. PATCHING AND REPAIR OF CONCRETE WALLS, FLOOR, OR STRUCTURE SHALL BE THE RESPONSIBILITY OF THE GENERAL CONTRACTOR. THIS WILL BE ACCOMPLISHED UPON COMPLETION OF THE INSTALLATION OF ANY AND ALL UTILITIES INSTALLED BY THE VARIOUS SUBCONTRACTORS.

21 W. Superior Street  
Suite 500  
Duluth, MN 55802  
TEL 218/727-8446  
FAX 218/727-8456  
http://www.LHBcorp.com  
DULUTH • MINNEAPOLIS



I HEREBY CERTIFY THAT THIS PLAN, SPECIFICATION OR REPORT WAS PREPARED BY ME OR UNDER MY DIRECT SUPERVISION AND THAT I AM A FULLY REGISTERED ENGINEER UNDER THE LAWS OF THE STATE OF MINNESOTA.  
REGISTRATION NUMBER: 49564  
WILLIAM SEAN NICHOLS  
Drawing Scale  
1/8" = 1'-0"  
Plot Scale

Drawing Title  
LEVEL 1 - ELECTRICAL DEMOLITION PLANS  
Approved: Division Chief  
Approved: Service Director

Project Title  
MAMMOGRAPHY SUITE  
Location  
V.A. MEDICAL CENTER  
ONE VETERANS DRIVE, MINNEAPOLIS, MINNESOTA 55417  
Date  
08/29/2012  
Checked  
WSN  
Drawn  
MSB

Project No.  
LHB: 120110 - VA: 618-12-130  
Building Number  
70  
DRAWING NO.  
1266- ED1.01

Office of  
Facilities  
Management  
Department of  
Veterans Affairs

CD SUBMITTAL 08/29/2012



## GENERAL SHEET NOTES

- A. ALL FINAL LOCATIONS AND ARRANGEMENTS OF LIGHTING FIXTURES SHALL BE OBTAINED FROM THE ARCHITECTURAL REFLECTED CEILING PLAN.
- B. LIGHTING FIXTURES WITH MORE THAN TWO LAMPS SHALL HAVE/VO OUTER LAMPS CONTROLLED WITH ONE SWITCH AND INNER LAMP(S) CONTROLLED BY A SECOND SWITCH.
- C. EACH BRANCH CIRCUIT HOMERUN SHALL HAVE NO MORE THAN THREE CIRCUITS. PROVIDE SEPARATE NEUTRAL CONDUCTOR WITH EACH 120V OR 277V CIRCUIT. EACH BRANCH CIRCUIT HOMERUN SHALL HAVE A SEPARATE GREEN INSULATED EQUIPMENT GROUNDING CONDUCTOR.
- D. WHERE MULTIPLE SWITCHES ARE SHOWN AT THE SAME LOCATION, PROVIDE MULTIPLE BACKBOXES WITH BARRIERS FOR DIFFERENT VOLTAGES AND TYPES OF ESSENTIAL WIRING (NORMAL, CRITICAL AND LIFE SAFETY). NORMAL, CRITICAL OR LIFE SAFETY WIRING SHALL NOT OCCUPY THE SAME CONDUIT OR BOX.
- E. WHERE CRITICAL OR LIFE SAFETY ESSENTIAL POWER TRANSFER DEVICES ARE SHOWN, CONNECT TO AUTOMATICALLY BYPASS LOCAL SWITCHING AND TRANSFER FROM NORMAL CIRCUIT TO ESSENTIAL CIRCUIT. THEN TRANSFER BACK TO NORMAL CIRCUIT WHEN DEVICE SENSES NORMAL CIRCUIT HAS BEEN RESTORED. DIMMED LIGHTING REQUIRES DIMMER WIRING BE CONNECTED THROUGH TERMINALS AVAILABLE AT POWER TRANSFER DEVICE TO ACCOMPLISH THIS BYPASS.

## KEYED SHEET NOTES

1. CONNECT TO EXISTING LIGHTING IN THIS ROOM.
2. CONNECT UNDERCABINET LIGHT FIXTURE TO RECEPTACLE BELOW.
3. MOUNT LOAD TRANSFER SWITCHES IN CEILING. REFER TO WIRING DIAGRAM 7559.01. CONNECT TO CRITICAL CIRCUIT INDICATED. CONNECT NORMAL POWER LIGHTING CIRCUIT FROM CIRCUIT FEEDING LIGHTS IN THIS ROOM. WHERE "N" & "B" LEVEL SWITCHING IS SHOWN, ONLY "B" SWITCH CONNECTS THROUGH TRANSFER DEVICE BYPASS. "N" SWITCH REMAINS CONNECTED TO NORMAL POWER AND BALLAST ASSOCIATED WITH "N" SWITCH WILL BE "OFF" IF NORMAL POWER IS NOT PRESENT.
4. MOUNT LOAD TRANSFER SWITCH IN CEILING. REFER TO WIRING DIAGRAM 7559.01. CONNECT LIFE SAFETY CIRCUIT FROM EXISTING LIFE SAFETY 277V CIRCUIT FEEDING EXISTING CORRIDOR LIFE SAFETY CIRCUIT. CONNECT NORMAL POWER ELECTRICAL CIRCUIT FROM CIRCUIT FEEDING LIGHTS IN THIS ROOM.
5. ROUTE CIRCUIT HOMERUN UP INTO INTERSTITIAL SPACE, THEN TO PANELBOARD AND CIRCUIT INDICATED.
6. CONNECT TO EXISTING LIFE SAFETY CIRCUIT SERVING THE AREA AND LIFE SAFETY CIRCUIT LOAD TRANSFER DEVICES. FED FROM PANELBOARD LH1B2.
7. 120V UNSWITCHED WIRING FROM RECEPTACLE CIRCUIT TO FUSE AND ON-OFF SWITCH. SEE ES4-02 FOR RECEPTACLE.
8. CONNECT TO EXISTING NH1M-1 CIRCUIT SERVING NORMAL LIGHTING IN THIS AREA.
9. PROVIDE ON-OFF SWITCH AND 5A IN-LINE FUSE PER MFG. INSTRUCTIONS. PROVIDE ADJACENT LOW-VOLTAGE DIMMER SWITCH PER MFG. REQUIREMENTS.
10. PROVIDE LOW-VOLTAGE POWER SUPPLY AND TERMINATION BOX FOR 277 POWER CONDUCTORS, DIMMER LOW-VOLTAGE CONDUCTORS (5-WIRE CONTROL), AND LOW-VOLTAGE FEED TO LIGHT FIXTURE. PER MFG. INSTRUCTIONS. MOUNT ABOVE CEILING.
11. CONNECT LIGHT FIXTURE PREWIRED CABLE, IN CONDUIT, TO LOW-VOLTAGE POWER SUPPLY.
12. PROVIDE LOW-VOLTAGE #14 AWG DIMMER WIRING (3-WIRE CONTROL, 277V POWER AND 277V SWITCHED POWER WIRING, IN CONDUIT. WIRE PER LIGHTING MFG. INSTRUCTIONS.

**1 LEVEL 1 - ELECTRICAL LIGHTING PLAN**  
1/4" = 1'-0"

## GENERAL NOTES:

GENERAL CONTRACTOR AND/OR ALL SUBCONTRACTORS SHALL FIELD VERIFY ALL DIMENSIONS SHOWN ON THESE PLANS AND SHALL BE RESPONSIBLE FOR VARIATIONS BETWEEN PLAN DIMENSIONS AND ACTUAL FIELD DIMENSIONS. WHERE VARIATIONS ARE FOUND TO OCCUR, THE CONTRACTOR SHALL NOTIFY THE PROJECT ENGINEER IN WRITING PRIOR TO PROCEEDING WITH CONSTRUCTION. NO ADJUSTMENT TO THE WORK WILL BE MADE WITHOUT THE PRIOR APPROVAL OF THE PROJECT ENGINEER.

GENERAL CONTRACTOR SHALL BE RESPONSIBLE FOR GENERAL DEMOLITION INCLUDING REMOVAL OF WALLS, PARTITIONS, DOORS & CEILING & FLOORS. ANY AND ALL CUTTING OF CONCRETE FLOORS, WALLS OR STRUCTURE SHALL BE THE GENERAL CONTRACTOR'S RESPONSIBILITY. CORE DRILLING THROUGH CONCRETE WALLS, FLOORS OR STRUCTURE FOR PIPING OR CONDUIT SHALL BE THE RESPONSIBILITY OF THE SUBCONTRACTOR BY TRADE. FIRESTOPPING OF THESE OPENING SHALL BE DONE BY THE RESPECTIVE SUBCONTRACTOR. REMOVAL OF DEBRIS RESULTING FROM DEMOLITION, CUTTING, AND/OR DRILLING IS THE RESPONSIBILITY OF THE GENERAL CONTRACTOR. PATCHING AND REPAIR OF CONCRETE WALLS, FLOOR, OR STRUCTURE SHALL BE THE RESPONSIBILITY OF THE GENERAL CONTRACTOR. THIS WILL BE ACCOMPLISHED UPON COMPLETION OF THE INSTALLATION OF ANY AND ALL UTILITIES INSTALLED BY THE VARIOUS SUBCONTRACTORS.

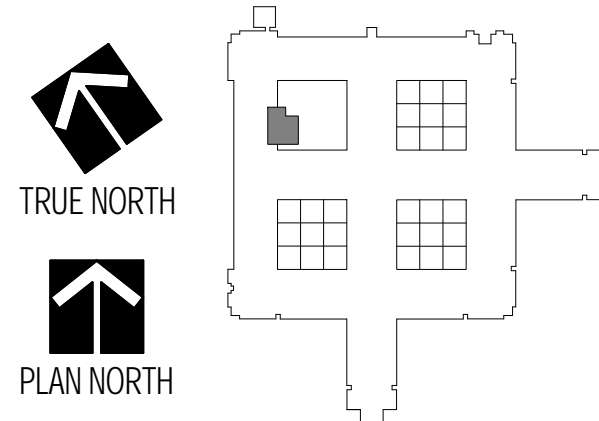
21 W. Superior Street  
Suite 500  
Duluth, MN 55802

TEL 218/727-8446  
FAX 218/727-8456

<http://www.LHBcorp.com>



DULUTH • MINNEAPOLIS



I HEREBY CERTIFY THAT THIS PLAN, SPECIFICATION OR REPORT WAS PREPARED BY ME OR UNDER MY DIRECT SUPERVISION AND THAT I AM A FULLY REGISTERED ENGINEER UNDER THE LAWS OF THE STATE OF MINNESOTA.

REGISTRATION NUMBER: 49864  
WILLIAM SEAN NICHOLS

Drawing Scale  
As Indicated

Plot Scale

Drawing Title  
**LEVEL 1 - ELECTRICAL LIGHTING PLAN - AREA L**

Approved: Division Chief

Approved: Service Director

Project Title  
**MAMMOGRAPHY SUITE**

Location  
V.A. MEDICAL CENTER  
ONE VETERANS DRIVE, MINNEAPOLIS, MINNESOTA 55417

Project No.  
LHB: 120110 - VA: 618-12-130

Building Number  
70

DRAWING NO.  
**1266- ES3.01**

Office of  
Facilities  
Management



CD SUBMITTAL 08/29/2012

# GENERAL SHEET NOTES

- EACH BRANCH CIRCUIT HOMERUN SHALL HAVE NO MORE THAN THREE CIRCUITS. PROVIDE SEPARATE NEUTRAL CONDUCTOR WITH EACH 120V OR 277V CIRCUIT. EACH BRANCH CIRCUIT HOMERUN SHALL HAVE A SEPARATE GREEN INSULATED GROUNDING CONDUCTOR.
- COORDINATE MAMMOGRAPHY AND ULTRASOUND EQUIPMENT REQUIREMENTS WITH EQUIPMENT INSTALLATION DOCUMENTS PRIOR TO ROUGH-IN.

# KEYED SHEET NOTES

- PROTECT EXISTING RADIOLOGY SERVER ROOM ELECTRICAL DURING CONSTRUCTION.
- CONNECT TO UNDERCABINET LIGHT FIXTURE ABOVE. SEE LIGHTING PLAN.
- EXISTING RECEPTACLE TO REMAIN CONNECTED.
- CONNECT TO FUSE AND LIGHT SWITCH POWERING LIGHT FIXTURE A4-S. SEE LIGHTING PLAN FOR FUSE/SWITCH LOCATION.
- PROVIDE 2P 30A ENCLOSED CIRCUIT BREAKER/ CONTACTOR/ INTERFACE PANEL. OBTAIN FROM MAMMOGRAPHY EQUIPMENT SUPPLIER. INSTALL PER EQUIPMENT SUPPLIER'S INSTRUCTIONS. VERIFY EXACT LOCATION WITH COTR AND MAMMOGRAPHY EQUIPMENT INSTALLATION DRAWINGS PRIOR TO ELECTRICAL ROUGH-IN. SEE ALSO ENCLOSED CIRCUIT BREAKER/DISCONNECT SCHEDULE.
- PROVIDE 4" X 4" X 4" JUNCTION BOX, FLUSH MOUNT, WITH COVER AT 9" AFF. PROVIDE 1" DIA. CHASE NIPPLE FOR CABLING CONNECTION FROM JUNCTION BOX TO GANTRY.
- PROVIDE 2-GANG, 2 1/8" DEEP FLUSH MOUNT WALL BOX FOR EMERGENCY-POWER-OFF (EPO) SWITCH AT 48" AFF.
- PROVIDE 3/4"C FROM EPO SWITCH TO EQUIPMENT DISCONNECT. PROVIDE 3/4", 18"GS FOR E.P.O. SWITCH AND X-RAY IN USE LIGHT.
- PROVIDE 1"C FROM EQUIPMENT DISCONNECT TO GANTRY JUNCTION BOX.
- PROVIDE 1 1/2" C, 2#3, #5ND FROM EQUIPMENT DISCONNECT, UP INTO INTERSTITIAL SPACE, THEN TO CIRCUIT INDICATED IN PANELBOARD. DO NOT RUN THIS CIRCUIT IN WIREWAY. ROUTE IN CONDUIT. PROVIDE GROUNDING ACCESSORIES, AS NECESSARY, TO ENSURE FULL SIZE EQUIPMENT GROUNDING CONDUCTOR CONNECTION TO NEUTRAL-GROUND BONDING POINT OF SEPARATELY DERIVED SYSTEM (480/120/208V TRANSFORMER SERVING PANELBOARD).
- REVIEW AND COMPLY WITH MAMMOGRAPHY EQUIPMENT SUPPLIER'S EQUIPMENT GROUNDING REQUIREMENTS AND COORDINATE INSTALLATION DETAILS BEFORE ROUGH-IN AND FINAL CONNECTION.
- MOUNT 24 VOLT "X-RAY IN USE" LIGHT AT 7'-6" A.F.F., CENTERED ON DOOR OPENING.
- PROVIDE 1/2"C, 2#14, 1#14G FOR 24 VOLT "X-RAY IN USE" WARNING LIGHT.

## 1 LEVEL 1 - ELECTRICAL POWER PLAN - AREA L

1/4" = 1'-0"

## GENERAL NOTES:

GENERAL CONTRACTOR AND/OR ALL SUBCONTRACTORS SHALL FIELD VERIFY ALL DIMENSIONS SHOWN ON THESE PLANS AND SHALL BE RESPONSIBLE FOR VARIATIONS BETWEEN PLAN DIMENSIONS AND ACTUAL FIELD DIMENSIONS. WHERE VARIATIONS ARE FOUND TO OCCUR, THE CONTRACTOR SHALL NOTIFY THE PROJECT ENGINEER IN WRITING PRIOR TO PROCEEDING WITH CONSTRUCTION; NO ADJUSTMENT TO THE WORK WILL BE MADE WITHOUT THE PRIOR APPROVAL OF THE PROJECT ENGINEER.

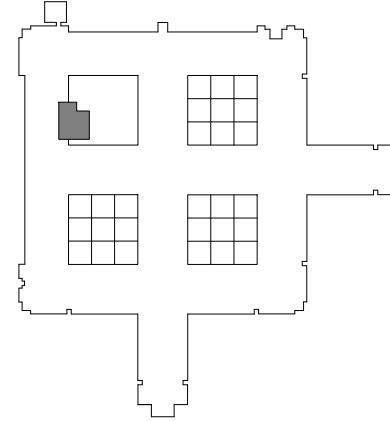
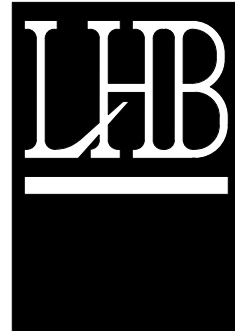
GENERAL CONTRACTOR SHALL BE RESPONSIBLE FOR GENERAL DEMOLITION INCLUDING REMOVAL OF WALLS, PARTITIONS, DOORS & CEILING & FLOORS. ANY AND ALL CUTTING OF CONCRETE FLOORS, WALLS OR STRUCTURE SHALL BE THE GENERAL CONTRACTOR'S RESPONSIBILITY. CORE DRILLING THROUGH CONCRETE WALLS, FLOORS OR STRUCTURE FOR PIPING OR CONDUIT SHALL BE THE RESPONSIBILITY OF THE SUBCONTRACTOR BY TRADE. FIRESTOPPING OF THESE OPENING SHALL BE DONE BY THE RESPECTIVE SUBCONTRACTOR. REMOVAL OF DEBRIS RESULTING FROM DEMOLITION, CUTTING, AND/OR DRILLING IS THE RESPONSIBILITY OF THE GENERAL CONTRACTOR. PATCHING AND REPAIR OF CONCRETE WALLS, FLOOR, OR STRUCTURE SHALL BE THE RESPONSIBILITY OF THE GENERAL CONTRACTOR; THIS WILL BE ACCOMPLISHED UPON COMPLETION OF THE INSTALLATION OF ANY AND ALL UTILITIES INSTALLED BY THE VARIOUS SUBCONTRACTORS.

21 W. Superior Street  
Suite 500  
Duluth, MN 55802

TEL 218/727-8446  
FAX 218/727-8456

http://www.LHBcorp.com

DULUTH • MINNEAPOLIS



I HEREBY CERTIFY THAT THIS PLAN, SPECIFICATION OR REPORT WAS PREPARED BY ME OR UNDER MY DIRECT SUPERVISION AND THAT I AM A FULLY REGISTERED ENGINEER UNDER THE LAWS OF THE STATE OF MINNESOTA.

REGISTRATION NUMBER: 49564  
WILLIAM SEAN NICHOLS

Drawing Scale  
As Indicated

Plot Scale

Drawing Title  
**LEVEL 1 - ELECTRICAL POWER PLAN - AREA L**

Approved: Division Chief

Approved: Service Director

Project Title  
**MAMMOGRAPHY SUITE**

Location  
V.A. MEDICAL CENTER  
ONE VETERANS DRIVE, MINNEAPOLIS, MINNESOTA 55417

Date  
08/29/2012

Checked  
WSN

Drawn  
MSB

Project No.  
LHB: 120110 - VA: 618-12-130

Building Number  
70

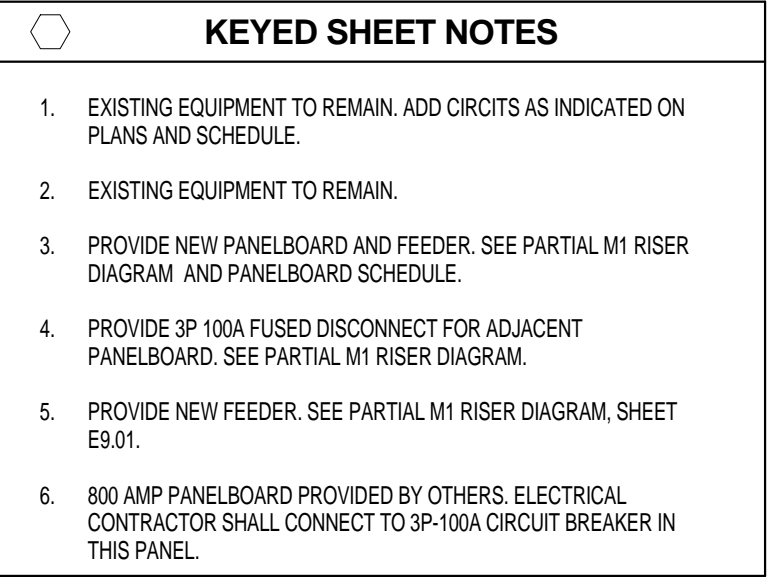
DRAWING NO.

**1266- ES4.01**

CD SUBMITTAL 08/29/2012

Office of  
Facilities  
Management





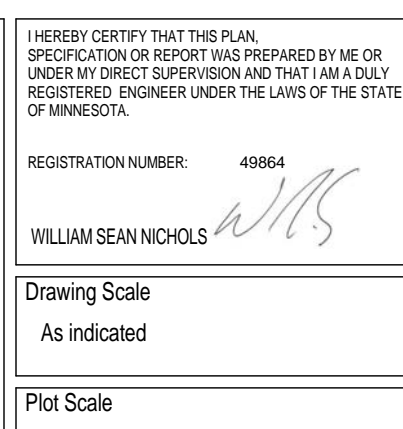
GENERAL  
NOTES:

21 W. Superior Street  
Suite 500  
Duluth, MN 55802

TEL 218/727-8446  
FAX 218/727-8456

<http://www.LHBcorp.com>

**DULUTH ■ M**



Approved: Division Chief	
Approved: Service Director	

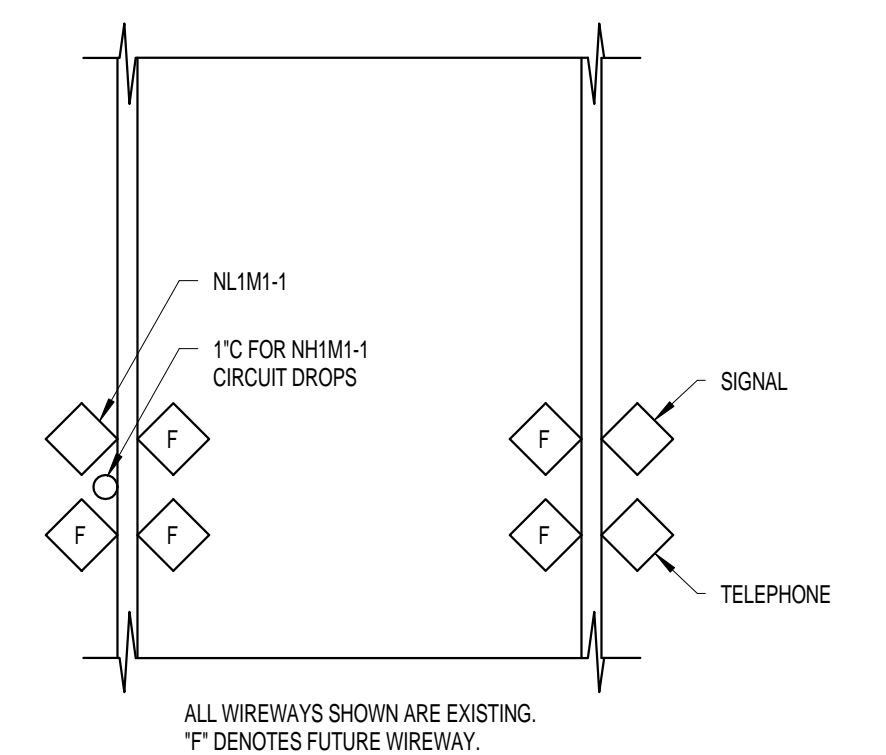
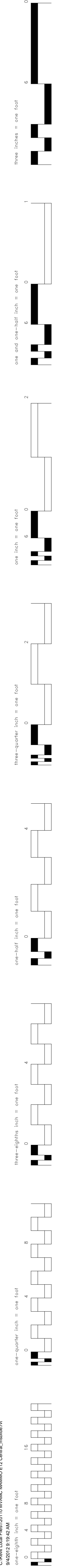
Location V.A. MEDICAL CENTER ONE VETERANS DRIVE, MINNEAPOLIS, MINNESOTA 55417		
Date	Checked	Drawn

DRAWING NO.  
1266- ES4.02

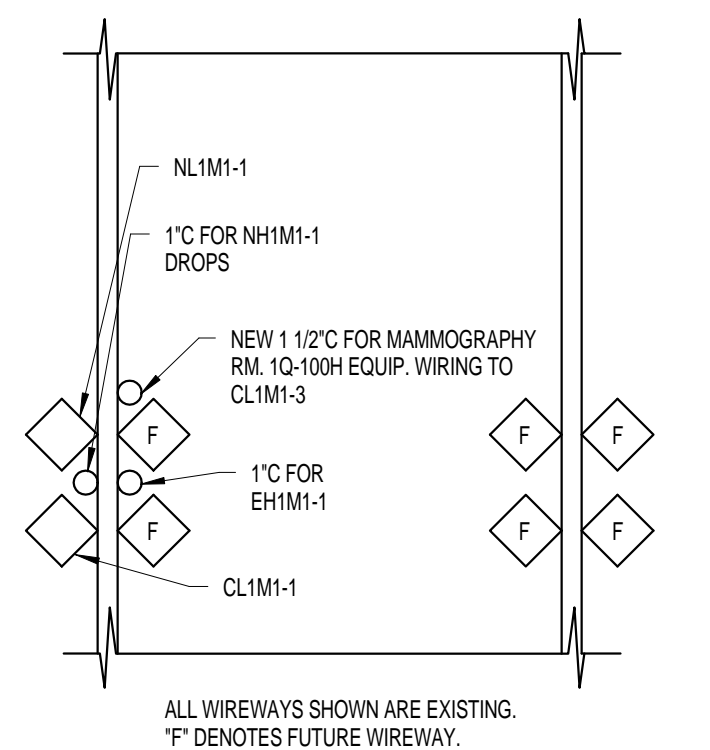


Department of  
Veterans Affairs

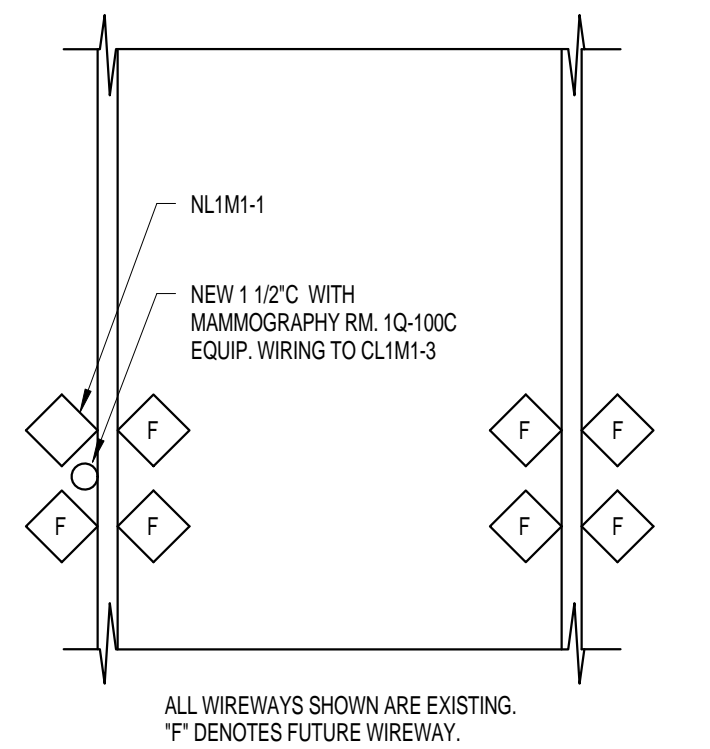




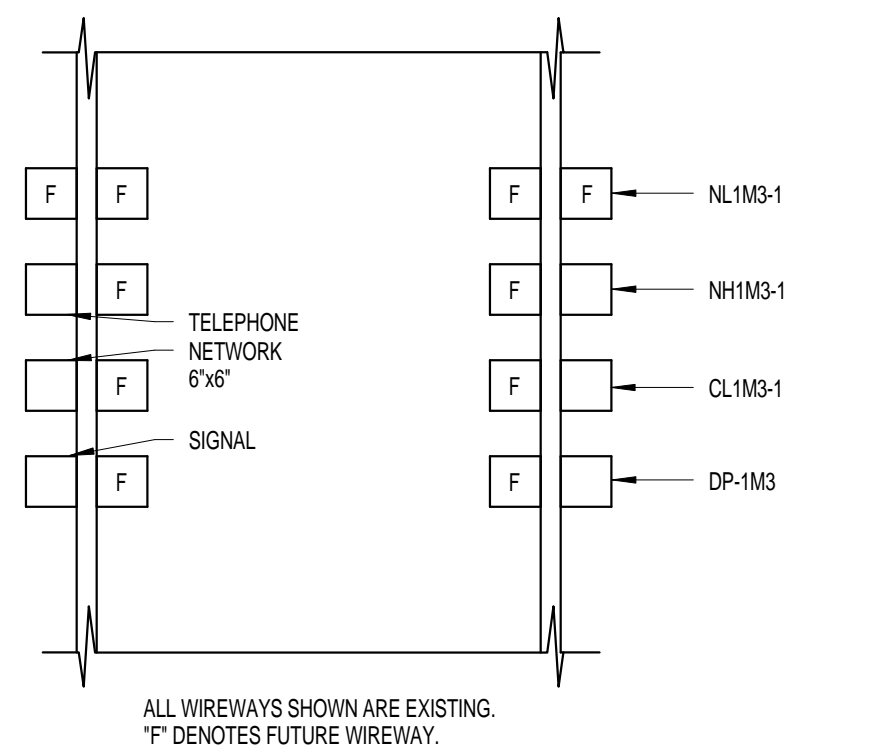
### 3 S4 ZONE SECTION



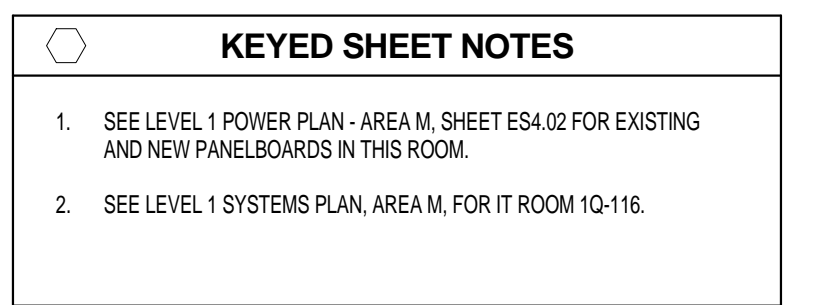
**5 S4 ZONE SECTION**  
NO SCALE



**7 S4 ZONE SECTION**  
NO SCALE



**9 S3 ZONE (TYPE A) SECTION**  
NO SCALE

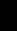


**1 PARTIAL INTERSTITIAL ELECTRICAL AND SYSTEMS PLAN - AREA L & M**  
1/8" = 1'-0"

GENERAL  
NOTES:

GENERAL CONTRACTOR AND/OR ALL SUBCONTRACTORS SHALL VERIFY ALL DIMENSIONS SHOWN ON THESE PLANS AND SHALL BE RESPONSIBLE FOR VARIATIONS BETWEEN PLAN DIMENSIONS AND ACTUAL FIELD DIMENSIONS. WHERE VARIATIONS ARE FOUND TO OCCUR, THE GENERAL CONTRACTOR SHALL BE RESPONSIBLE FOR CORRECTING SUCH CONDITIONS PRIOR TO PROCEEDING WITH CONSTRUCTION. NO ADJUSTMENTS TO THE WORK WILL BE MADE WITHOUT THE PRIOR APPROVAL OF THE PROJECT ENGINEER.

GENERAL CONTRACTOR SHALL BE RESPONSIBLE FOR GENERAL DEMOLITION INCLUDING REMOVAL OF WALLS, PARTITIONS, DOORS & CEILING FLOORS, ANY AND ALL CUTTING OF CONCRETE FLOORS OR STRUCTURE. THE GENERAL CONTRACTOR SHALL BE RESPONSIBLE FOR REPAIRING OR REPLACING ALL DAMAGED FLOORS OR STRUCTURES. THE GENERAL CONTRACTOR SHALL BE RESPONSIBLE FOR THE REPAIR AND/OR REPLACEMENT OF ANY AND ALL MATERIALS THAT ARE DESTROYED BY THE SUBCONTRACTOR BY TRADE. PREEXISTING DAMAGE TO THESE OPENINGS SHALL BE DONE BY THE RESPECTIVE TRADES. THE GENERAL CONTRACTOR SHALL BE RESPONSIBLE FOR THE REPAIR AND/OR REPLACEMENT OF ANY AND ALL MATERIALS THAT ARE DESTROYED BY THE GENERAL CONTRACTOR. PATCHING AND REPAIR OF CONCRETE WALLS, FLOOR OR STRUCTURE SHALL BE THE RESPONSIBILITY OF THE GENERAL CONTRACTOR. THE GENERAL CONTRACTOR SHALL BE RESPONSIBLE FOR ACCOMPLISHING UPON COMPLETION OF THE INSTALLATION OF ANY AND ALL UTILITIES INSTALLED BY THE VARIOUS SUBCONTRACTORS.



Drawing Title	PARTIAL INTERSTITIAL ELECTRICAL AND SYSTEMS PLAN - AREA L & M
---------------	--

Project Title	MAMMOGRAPHY SUITE
---------------	-------------------

Project No.  
LHB: 120110 - VA: 618-12-130

Office of  
Facilities  
Management

 Department of  
Veterans Affairs

CD SUBMITTAL 08/29/2012



1. PROTECT EXISTING RADIOLING SERVER ROOM EQUIPMENT AND CABLEING DATA DURING CONSTRUCTION.
2. ROUTE TELEPHONE DATA CABLEING IN THIS AREA TO INTERSTITIAL SPACE ABOVE, THEN TO IT ROOM 1Q-116. TERMINATE DATA CABLEING ON NEW PATCH PANELS AT EXISTING WALL MOUNT DATA RACK. TERMINATE VOICE CABLEING TO NEW 110 BLOCKS AT EXISTING PLYWOOD BACKBOARD.
3. ROUTE TELEPHONE DATA CABLEING IN THIS AREA TO INTERSTITIAL SPACE ABOVE, THEN TO IT ROOM 1Q-117A. TERMINATE DATA CABLEING ON NEW PATCH PANELS AT EXISTING WALL MOUNT DATA RACK. TERMINATE VOICE CABLEING TO NEW 110 BLOCKS AT EXISTING PLYWOOD BACKBOARD.

CD SUBMITTAL 08/29/2012

Office of  
Facilities  
Management




DATE \_\_\_\_\_

△  
REVISIONS

**GENERAL CONTRACTOR AND/OR SUBCONTRACTORS SHALL FIELD VERIFY ALL DIMENSIONS SHOWN ON THESE PLANS AND SHALL BE RESPONSIBLE FOR VARIATIONS BETWEEN PLAN DIMENSIONS AND ACTUAL FIELD DIMENSIONS, WHERE VARIATIONS ARE FOUND TO OCCUR. THE GENERAL CONTRACTOR SHALL BE RESPONSIBLE FOR ANY CORRECTIONS REQUIRED DURING CONSTRUCTION, NO ADJUSTMENT TO THE WORK WILL BE MADE WITHOUT THE PRIOR APPROVAL OF THE PROJECT ENGINEER.**

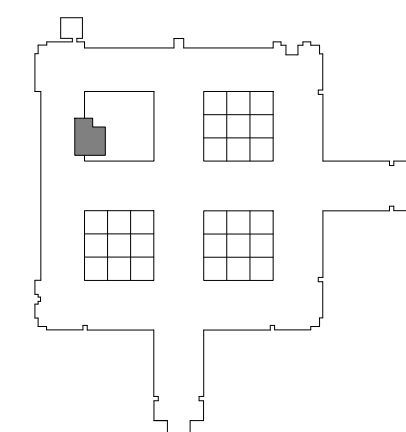
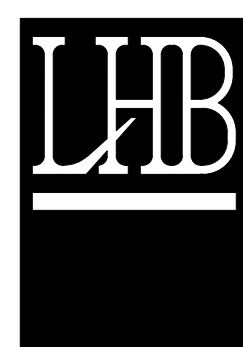
**GENERAL CONTRACTOR SHALL BE RESPONSIBLE FOR GENERAL DEMOLITION INCLUDING REMOVAL OF WALLS, PARTITIONS, DOORS & CEILING & FLOORS, AND ALL CUTTING OF CONCRETE, FLOORS, WALLS OR STRUCTURE SHALL BE THE RESPONSIBILITY OF THE GENERAL CONTRACTOR'S TRADES. THE GENERAL CONTRACTOR SHALL BE RESPONSIBLE FOR THE PROTECTION OF EXISTING UTILITIES. THE GENERAL CONTRACTOR SHALL BE RESPONSIBLE FOR THE DISPOSITION OF DEBRIS. PRE-DEMOLITION TESTING SHALL BE THE RESPONSIBILITY OF THE SUBCONTRACTOR BY TRADE. PRE-FORMWORKING OF THESE OPENINGS SHALL BE DONE BY THE GENERAL CONTRACTOR. PATCHING AND REPAIR OF CONCRETE WALL, FLOOR, OR STRUCTURE SHALL BE THE RESPONSIBILITY OF THE GENERAL CONTRACTOR. THIS WILL BE ACCOMPLISHED UPON COMPLETION OF THE INSTALLATION OF ANY AND ALL UTILITIES INSTALLED.**

21 W. Superior Street  
Suite 500  
Duluth, MN 55802

TEL 218/727-8446  
FAX 218/727-8456

<http://www.LHBcorp.com>

DULUTH ■ MINNEAPOLIS



I HEREBY CERTIFY THAT THIS PLAN,  
SPECIFICATION OR REPORT WAS PREPARED BY ME OR  
UNDER MY DIRECT SUPERVISION AND THAT I AM A duly  
REGISTERED ENGINEER UNDER THE LAWS OF THE STATE  
OF MINNESOTA.

REGISTRATION NUMBER: 450654

WILLIAM SEAN NICHOLS

Drawing Scale  
As indicated

Plot Scale

Drawing Title  
**LEVEL 1 - ELECTRICAL SYSTEMS  
PLAN - AREA L**

	Approved: Division Chief
--	--------------------------

	Approved: Service Director

Project Title	MAMMOGRAPHY SUITE
---------------	-------------------

	Location

Date

Checked
---------

Drawn
-------

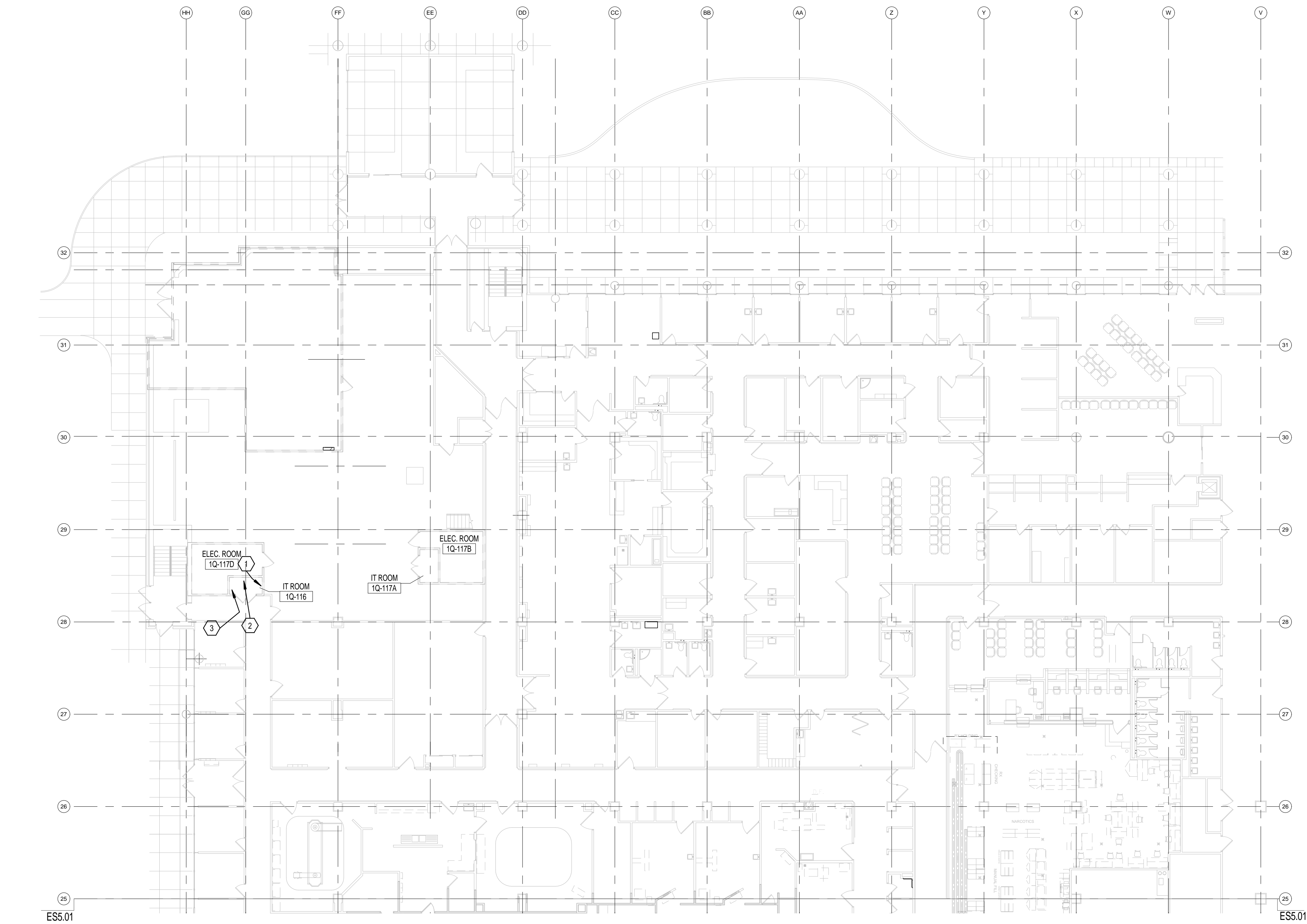
Project No.  
LHB: 120110 - VA: 618-12-130Building Number  
70

DRAWING NO.

1266- ES5.01

0  
6  
1  
2  
3  
4  
5  
6  
7  
8  
9  
10  
11  
12  
13  
14  
15  
16  
17  
18  
19  
20  
21  
22  
23  
24  
25  
26  
27  
28  
29  
30  
31  
32  
33  
34  
35  
36  
37  
38  
39  
40  
41  
42  
43  
44  
45  
46  
47  
48  
49  
50  
51  
52  
53  
54  
55  
56  
57  
58  
59  
60  
61  
62  
63  
64  
65  
66  
67  
68  
69  
70  
71  
72  
73  
74  
75  
76  
77  
78  
79  
80  
81  
82  
83  
84  
85  
86  
87  
88  
89  
90  
91  
92  
93  
94  
95  
96  
97  
98  
99  
100  
101  
102  
103  
104  
105  
106  
107  
108  
109  
110  
111  
112  
113  
114  
115  
116  
117  
118  
119  
120  
121  
122  
123  
124  
125  
126  
127  
128  
129  
130  
131  
132  
133  
134  
135  
136  
137  
138  
139  
140  
141  
142  
143  
144  
145  
146  
147  
148  
149  
150  
151  
152  
153  
154  
155  
156  
157  
158  
159  
160  
161  
162  
163  
164  
165  
166  
167  
168  
169  
170  
171  
172  
173  
174  
175  
176  
177  
178  
179  
180  
181  
182  
183  
184  
185  
186  
187  
188  
189  
190  
191  
192  
193  
194  
195  
196  
197  
198  
199  
200  
201  
202  
203  
204  
205  
206  
207  
208  
209  
210  
211  
212  
213  
214  
215  
216  
217  
218  
219  
220  
221  
222  
223  
224  
225  
226  
227  
228  
229  
230  
231  
232  
233  
234  
235  
236  
237  
238  
239  
240  
241  
242  
243  
244  
245  
246  
247  
248  
249  
250  
251  
252  
253  
254  
255  
256  
257  
258  
259  
260  
261  
262  
263  
264  
265  
266  
267  
268  
269  
270  
271  
272  
273  
274  
275  
276  
277  
278  
279  
280  
281  
282  
283  
284  
285  
286  
287  
288  
289  
290  
291  
292  
293  
294  
295  
296  
297  
298  
299  
300  
301  
302  
303  
304  
305  
306  
307  
308  
309  
310  
311  
312  
313  
314  
315  
316  
317  
318  
319  
320  
321  
322  
323  
324  
325  
326  
327  
328  
329  
330  
331  
332  
333  
334  
335  
336  
337  
338  
339  
340  
341  
342  
343  
344  
345  
346  
347  
348  
349  
350  
351  
352  
353  
354  
355  
356  
357  
358  
359  
360  
361  
362  
363  
364  
365  
366  
367  
368  
369  
370  
371  
372  
373  
374  
375  
376  
377  
378  
379  
380  
381  
382  
383  
384  
385  
386  
387  
388  
389  
390  
391  
392  
393  
394  
395  
396  
397  
398  
399  
400  
401  
402  
403  
404  
405  
406  
407  
408  
409  
410  
411  
412  
413  
414  
415  
416  
417  
418  
419  
420  
421  
422  
423  
424  
425  
426  
427  
428  
429  
430  
431  
432  
433  
434  
435  
436  
437  
438  
439  
440  
441  
442  
443  
444  
445  
446  
447  
448  
449  
450  
451  
452  
453  
454  
455  
456  
457  
458  
459  
460  
461  
462  
463  
464  
465  
466  
467  
468  
469  
470  
471  
472  
473  
474  
475  
476  
477  
478  
479  
480  
481  
482  
483  
484  
485  
486  
487  
488  
489  
490  
491  
492  
493  
494  
495  
496  
497  
498  
499  
500  
501  
502  
503  
504  
505  
506  
507  
508  
509  
510  
511  
512  
513  
514  
515  
516  
517  
518  
519  
520  
521  
522  
523  
524  
525  
526  
527  
528  
529  
530  
531  
532  
533  
534  
535  
536  
537  
538  
539  
540  
541  
542  
543  
544  
545  
546  
547  
548  
549  
550  
551  
552  
553  
554  
555  
556  
557  
558  
559  
560  
561  
562  
563  
564  
565  
566  
567  
568  
569  
570  
571  
572  
573  
574  
575  
576  
577  
578  
579  
580  
581  
582  
583  
584  
585  
586  
587  
588  
589  
590  
591  
592  
593  
594  
595  
596  
597  
598  
599  
600  
601  
602  
603  
604  
605  
606  
607  
608  
609  
610  
611  
612  
613  
614  
615  
616  
617  
618  
619  
620  
621  
622  
623  
624  
625  
626  
627  
628  
629  
630  
631  
632  
633  
634  
635  
636  
637  
638  
639  
640  
641  
642  
643  
644  
645  
646  
647  
648  
649  
650  
651  
652  
653  
654  
655  
656  
657  
658  
659  
660  
661  
662  
663  
664  
665  
666  
667  
668  
669  
670  
671  
672  
673  
674  
675  
676  
677  
678  
679  
680  
681  
682  
683  
684  
685  
686  
687  
688  
689  
690  
691  
692  
693  
694  
695  
696  
697  
698  
699  
700  
701  
702  
703  
704  
705  
706  
707  
708  
709  
710  
711  
712  
713  
714  
715  
716  
717  
718  
719  
720  
721  
722  
723  
724  
725  
726  
727  
728  
729  
730  
731  
732  
733  
734  
735  
736  
737  
738  
739  
740  
741  
742  
743  
744  
745  
746  
747  
748  
749  
750  
751  
752  
753  
754  
755  
756  
757  
758  
759  
760  
761  
762  
763  
764  
765  
766  
767  
768  
769  
770  
771  
772  
773  
774  
775  
776  
777  
778  
779  
780  
781  
782  
783  
784  
785  
786  
787  
788  
789  
790  
791  
792  
793  
794  
795  
796  
797  
798  
799  
800  
801  
802  
803  
804  
805  
806  
807  
808  
809  
810  
811  
812  
813  
814  
815  
816  
817  
818  
819  
820  
821  
822  
823  
824  
825  
826  
827  
828  
829  
830  
831  
832  
833  
834  
835  
836  
837  
838  
839  
840  
841  
842  
843  
844  
845  
846  
847  
848  
849  
850  
851  
852  
853  
854  
855  
856  
857  
858  
859  
860  
861  
862  
863  
864  
865  
866  
867  
868  
869  
870  
871  
872  
873  
874  
875  
876  
877  
878  
879  
880  
881  
882  
883  
884  
885  
886  
887  
888  
889  
890  
891  
892  
893  
894  
895  
896  
897  
898  
899  
900  
901  
902  
903  
904  
905  
906  
907  
908  
909  
910  
911  
912  
913  
914  
915  
916  
917  
918  
919  
920  
921  
922  
923  
924  
925  
926  
927  
928  
929  
930  
931  
932  
933  
934  
935  
936  
937  
938  
939  
940  
941  
942  
943  
944  
945  
946  
947  
948  
949  
950  
951  
952  
953  
954  
955  
956  
957  
958  
959  
960  
961  
962  
963  
964  
965  
966  
967  
968  
969  
970  
971  
972  
973  
974  
975  
976  
977  
978  
979  
980  
981  
982  
983  
984  
985  
986  
987  
988  
989  
990  
991  
992  
993  
994  
995  
996  
997  
998  
999  
1000

KEYED SHEET NOTES	
1.	EXISTING IDF WALL MOUNT RACK. SEE DETAIL, SHEET E7.02. ROUTE DATA CABLES FROM AREA L WORK AREA TO NEW AND EXISTING PATCH PANELS IN RACK.
2.	EXISTING VOICE 110 BLOCKS ON THIS WALL. ROUTE VOICE CABLES FROM AREA L WORK AREA TO THESE 110 BLOCKS AND TERMINATE. CROSS-CONNECTION BY CONTRACTOR.
3.	EXISTING SECURITY PANELS ON THIS WALL. PROVIDE ONE DATA CONNECTION TO NEW SECURITY BOARD ENCLOSURE.



**1 LEVEL 1 - ELECTRICAL SYSTEMS PLAN - AREA M**  
1/16" = 1'-0"



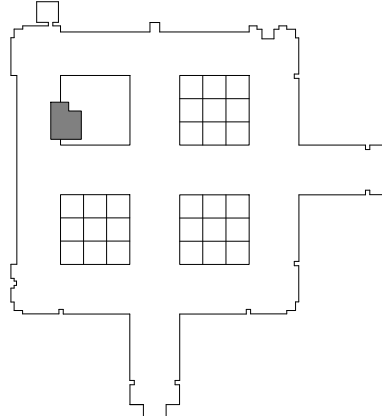
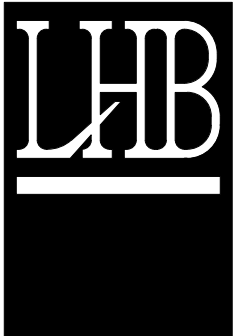
**GENERAL NOTES:**

GENERAL CONTRACTOR AND/OR ALL SUBCONTRACTORS SHALL FIELD VERIFY ALL DIMENSIONS SHOWN ON THESE PLANS AND SHALL BE RESPONSIBLE FOR VARIATIONS BETWEEN PLAN DIMENSIONS AND ACTUAL FIELD DIMENSIONS. WHERE VARIATIONS ARE FOUND TO OCCUR, THE CONTRACTOR SHALL NOTIFY THE PROJECT ENGINEER IN WRITING PRIOR TO PROCEEDING WITH CONSTRUCTION. NO ADJUSTMENT TO THE WORK WILL BE MADE WITHOUT THE PRIOR APPROVAL OF THE PROJECT ENGINEER.

GENERAL CONTRACTOR SHALL BE RESPONSIBLE FOR GENERAL DEMOLITION INCLUDING REMOVAL OF WALLS, PARTITIONS, DOORS & CEILING & FLOORS. ANY AND ALL CUTTING OF CONCRETE FLOORS, WALLS OR STRUCTURE SHALL BE THE GENERAL CONTRACTOR'S RESPONSIBILITY. CORE DRILLING THROUGH CONCRETE WALLS, FLOORS OR STRUCTURE FOR PIPING OR CONDUIT SHALL BE THE RESPONSIBILITY OF THE SUBCONTRACTOR BY TRADE. FIRESTOPPING OF THESE OPENING SHALL BE DONE BY THE RESPECTIVE SUBCONTRACTOR. REMOVAL OF DEBRIS RESULTING FROM DEMOLITION, CUTTING, AND/OR DRILLING IS THE RESPONSIBILITY OF THE GENERAL CONTRACTOR. PATCHING AND REPAIR OF CONCRETE WALLS, FLOOR, OR STRUCTURE SHALL BE THE RESPONSIBILITY OF THE GENERAL CONTRACTOR. THIS WILL BE ACCOMPLISHED UPON COMPLETION OF THE INSTALLATION OF ANY AND ALL UTILITIES INSTALLED BY THE VARIOUS SUBCONTRACTORS.

21 W. Superior Street  
Suite 500  
Duluth, MN 55802  
TEL 218/727-8446  
FAX 218/727-8456

<http://www.LHBcorp.com>  
DULUTH • MINNEAPOLIS



I HEREBY CERTIFY THAT THIS PLAN, SPECIFICATION OR REPORT WAS PREPARED BY ME OR UNDER MY DIRECT SUPERVISION AND THAT I AM A FULLY REGISTERED ENGINEER UNDER THE LAWS OF THE STATE OF MINNESOTA.

REGISTRATION NUMBER: 495864  
WILLIAM SEAN NICHOLS *WSN*

Drawing Scale: As Indicated  
Plot Scale:

Drawing Title <b>LEVEL 1 - ELECTRICAL SYSTEMS PLAN - AREA M</b>	
Approved: Division Chief	Approved: Service Director

Project Title <b>MAMMOGRAPHY SUITE</b>	
Location V.A. MEDICAL CENTER ONE VETERANS DRIVE, MINNEAPOLIS, MINNESOTA 55417	Date 08/29/2012
Checked WSN	Drawn MSB

Project No. LHB: 120110 - VA: 618-12-130	Building Number 70
DRAWING NO. <b>1266- ES5.02</b>	

Office of  
Facilities  
Management



CD SUBMITTAL 08/29/2012



GENERAL SHEET NOTES

- A. ELECTRICAL CONTRACTOR SHALL BE RESPONSIBLE FOR WIRING ALL ELECTRICAL ITEMS SHOWN ON THE DRAWINGS. EXCEPT ITEMS LISTED ON SHEET E001 PROJECT ELECTRICAL NOTES.
- B. FIRE ALARM SPEAKERS/STROBES AND STROBES SHALL BE CEILING MOUNT TYPE UNLESS INDICATED OTHERWISE WITH WALL MOUNT SYMBOL.
- C. CONNECT FIRE ALARM INITIATING DEVICES TO EXISTING ADDRESSABLE CIRCUIT SERVING THE AREA (NODE 3, LOOP1).
- D. CONNECT FIRE ALARM AUDIBLE NOTIFICATION DEVICES TO EXISTING SPEAKER CIRCUIT SERVING THE AREA (NODE 32, AMP 2).
- E. CONNECT FIRE ALARM NOTIFICATION DEVICES (STROBES) TO EXISTING NOTIFICATION APPLIANCE CIRCUIT INDICATED (CIRCUIT 34.3 OR 34.4).

KEYED SHEET NOTES

1. INSTALL DEVICES SALVAGED FROM DEMOLITION. CONNECT TO EXISTING ACCESS CONTROL CABLING. EXTEND WITH NEW CABLING TO MATCH EXISTING.
2. CONNECT TO NEW DOOR STRIKE PROVIDED WITH DOOR HARDWARE.
3. PROVIDE NEW DEVICE IN DOOR FRAME.

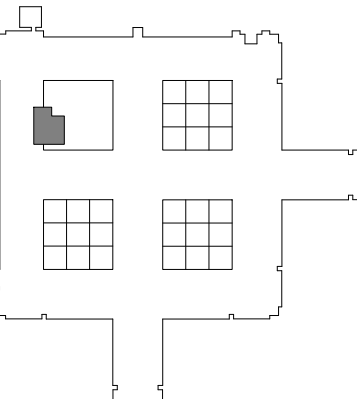
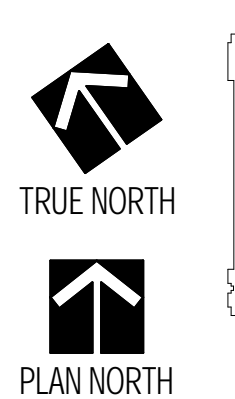


GENERAL NOTES:

GENERAL CONTRACTOR AND/OR ALL SUBCONTRACTORS SHALL FIELD VERIFY ALL DIMENSIONS SHOWN ON THESE PLANS AND SHALL BE RESPONSIBLE FOR VARIATIONS BETWEEN PLAN DIMENSIONS AND ACTUAL FIELD DIMENSIONS. WHERE VARIATIONS ARE FOUND TO OCCUR, THE CONTRACTOR SHALL NOTIFY THE PROJECT ENGINEER IN WRITING PRIOR TO PROCEEDING WITH CONSTRUCTION; NO ADJUSTMENT TO THE WORK WILL BE MADE WITHOUT THE PRIOR APPROVAL OF THE PROJECT ENGINEER.

GENERAL CONTRACTOR SHALL BE RESPONSIBLE FOR GENERAL DEMOLITION INCLUDING REMOVAL OF WALLS, PARTITIONS, DOORS & CEILING & FLOORS. ANY AND ALL CUTTING OF CONCRETE FLOORS, WALLS OR STRUCTURE SHALL BE THE GENERAL CONTRACTOR'S RESPONSIBILITY. CORE DRILLING THROUGH CONCRETE WALLS, FLOORS OR STRUCTURE FOR PIPING OR CONDUIT SHALL BE THE RESPONSIBILITY OF THE SUBCONTRACTOR BY TRADE. FIRESTOPPING OF THESE OPENING SHALL BE DONE BY THE RESPECTIVE SUBCONTRACTOR. REMOVAL OF DEBRIS RESULTING FROM DEMOLITION, CUTTING, AND/OR DRILLING IS THE RESPONSIBILITY OF THE GENERAL CONTRACTOR. PATCHING AND REPAIR OF CONCRETE WALLS, FLOOR, OR STRUCTURE SHALL BE THE RESPONSIBILITY OF THE GENERAL CONTRACTOR; THIS WILL BE ACCOMPLISHED UPON COMPLETION OF THE INSTALLATION OF ANY AND ALL UTILITIES INSTALLED BY THE VARIOUS SUBCONTRACTORS.

21 W. Superior Street  
Suite 500  
Duluth, MN 55802  
TEL 218/727-8446  
FAX 218/727-8456  
http://www.LHBcorp.com  
DULUTH • MINNEAPOLIS



I HEREBY CERTIFY THAT THIS PLAN, SPECIFICATION OR REPORT WAS PREPARED BY ME OR UNDER MY DIRECT SUPERVISION AND THAT I AM A FULLY REGISTERED ENGINEER UNDER THE LAWS OF THE STATE OF MINNESOTA.

REGISTRATION NUMBER: 49864  
WILLIAM SEAN NICHOLS  
Drawing Scale: As Indicated  
Plot Scale:

Drawing Title  
LEVEL 1 - ELECTRONIC SAFETY AND SECURITY PLAN - AREA L

Approved: Division Chief  
Approved: Service Director

Project Title  
MAMMOGRAPHY SUITE

Location  
V.A. MEDICAL CENTER  
ONE VETERANS DRIVE, MINNEAPOLIS, MINNESOTA 55417

Project No.  
LHB: 120110 - VA: 618-12-130

Building Number  
70

DRAWING NO.  
1266- ES6.01

Office of  
Facilities  
Management



CD SUBMITTAL 08/29/2012

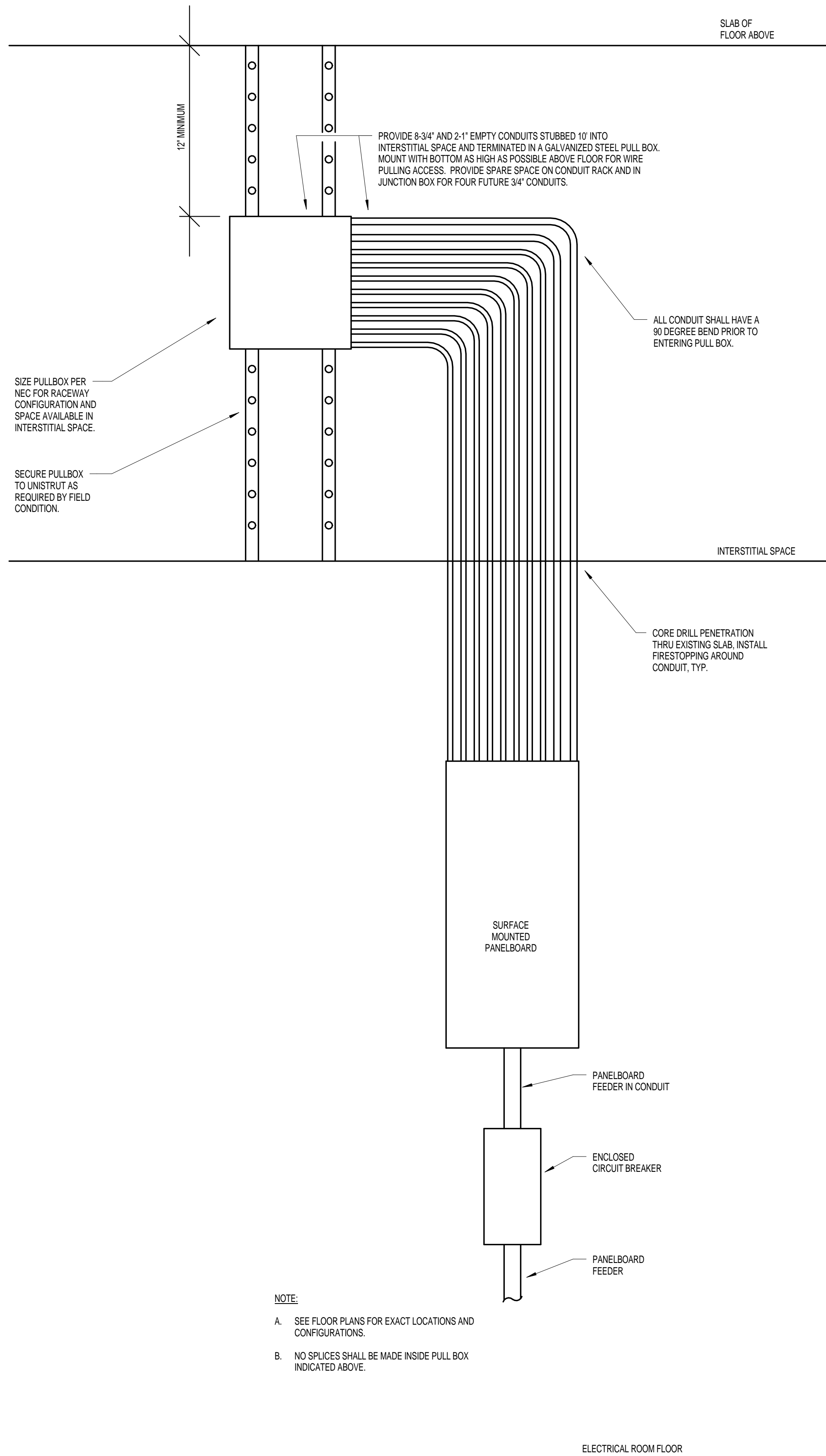


CD SUBMITTAL 08/29/2012

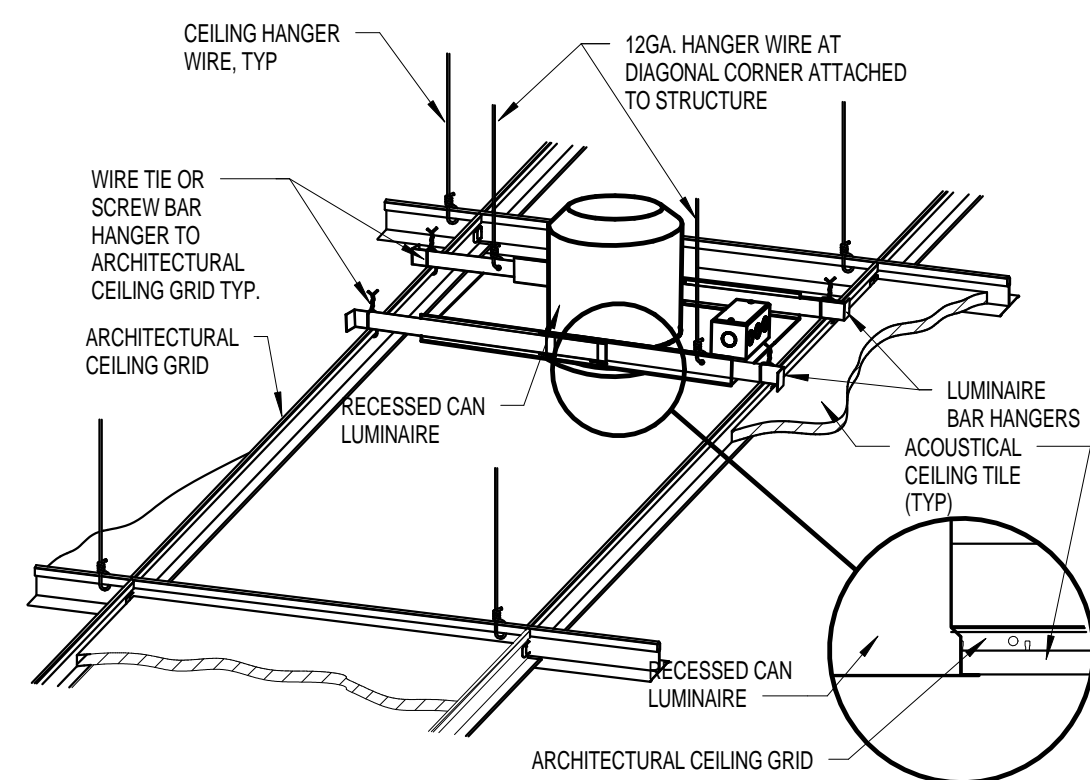


Department of  
Veterans Affairs

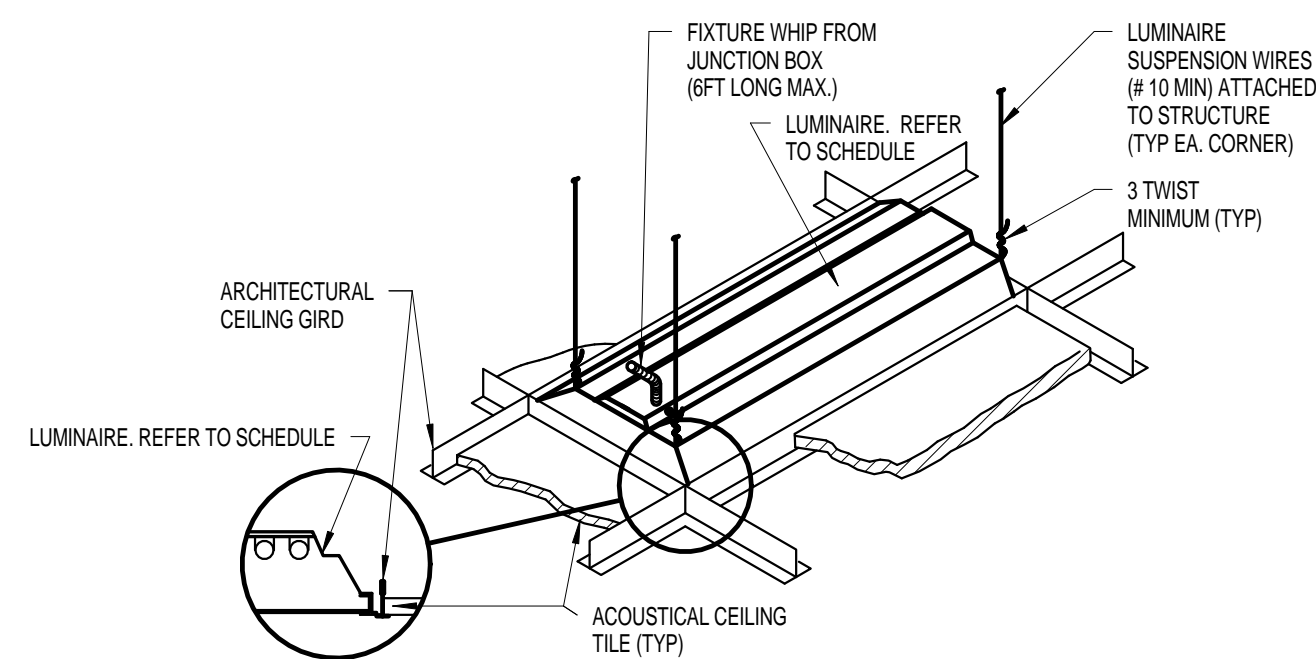
C:\Revit Local Files\2011\10 NIV\AMC MAMMO E12 Central\_rstblbe.rvt



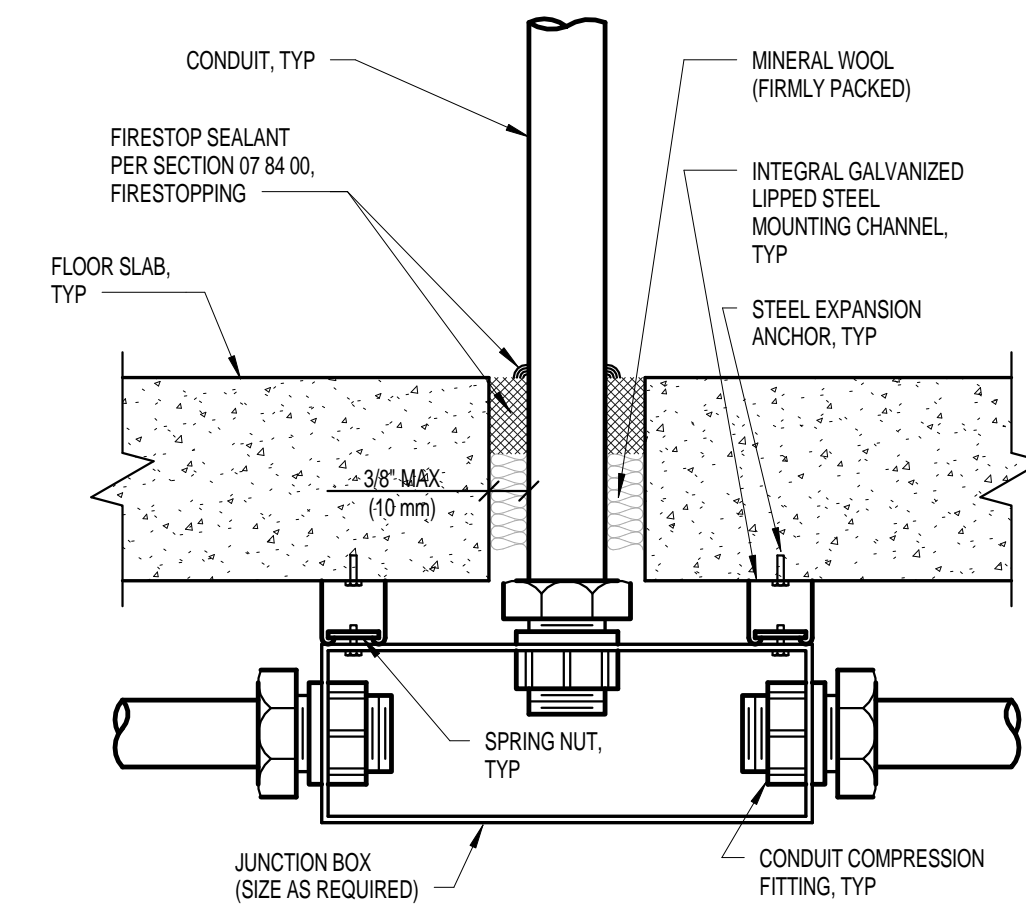
**4 TYPICAL PANELBOARD INSTALLATION**  
NO SCALE



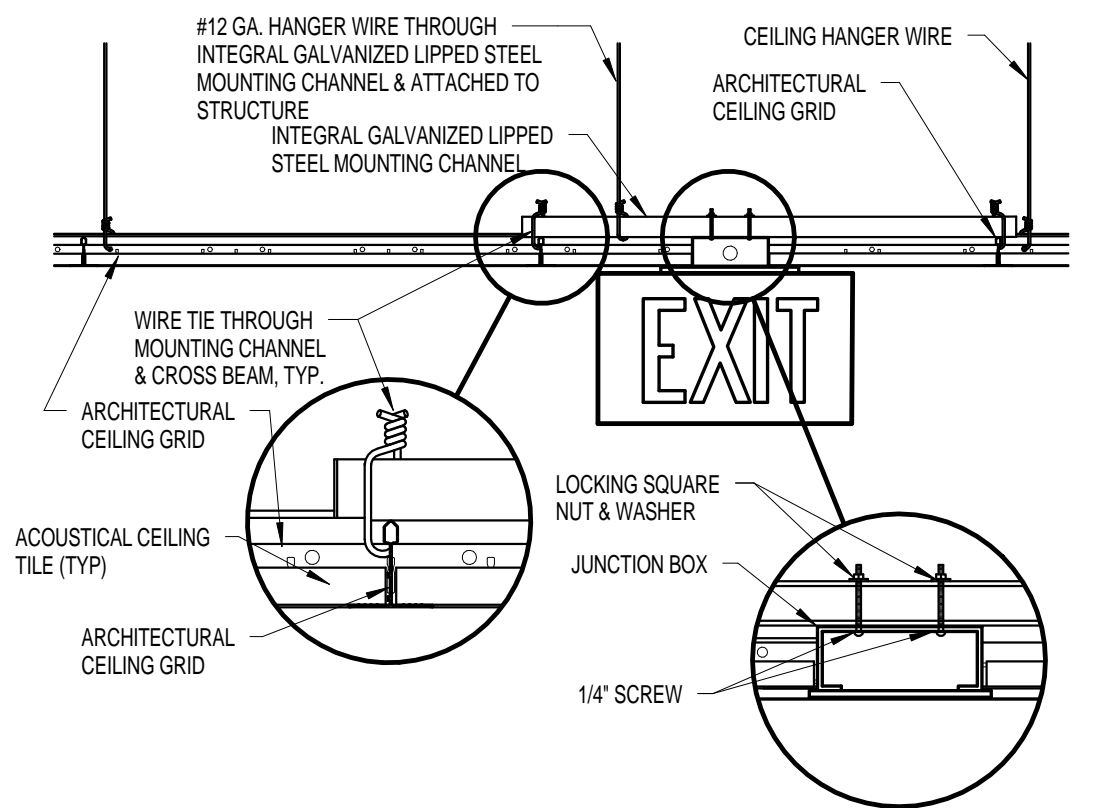
**3 DOWNLIGHT MOUNTING - LAY-IN CEILING**  
NO SCALE



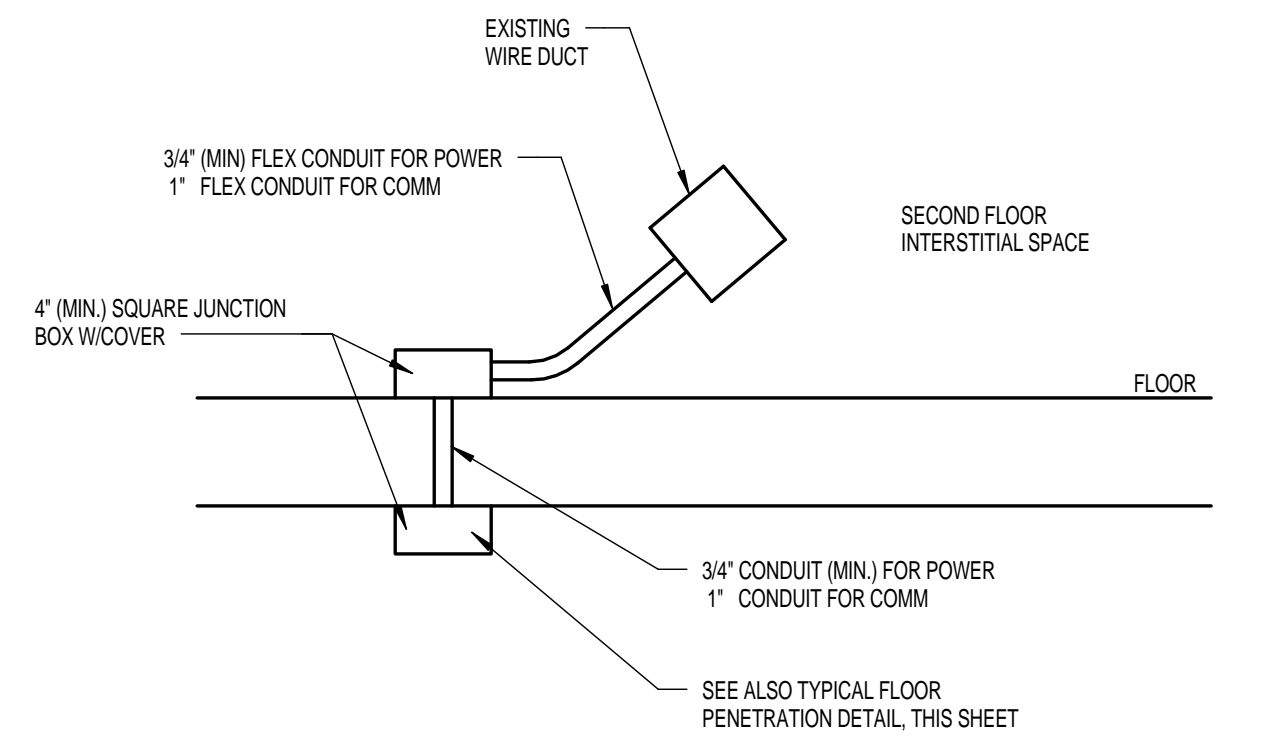
**6 LUMINAIRE MOUNTING - LAY-IN CEILING**  
NO SCALE



**2 TYPICAL FLOOR PENETRATION DETAIL**  
1/2" = 1'-0"



**5 EXIT SIGN MOUNTING - LAY-IN CEILING**  
NO SCALE



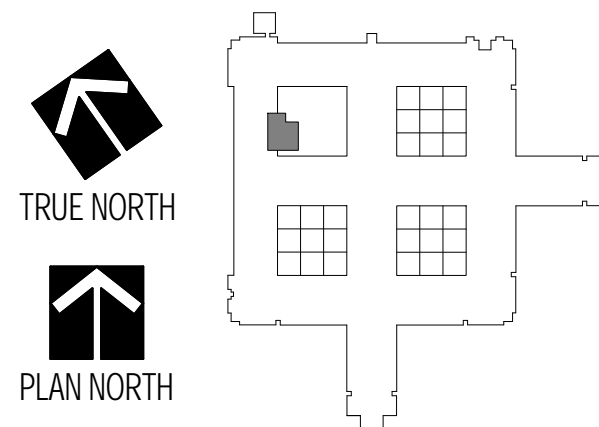
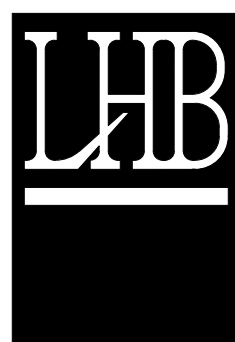
**1 POWER AND COMM CONNECTION TO WIREWAY DETAIL**  
NO SCALE

**GENERAL NOTES:**

GENERAL CONTRACTOR AND/OR ALL SUBCONTRACTORS SHALL FIELD VERIFY ALL DIMENSIONS SHOWN ON THESE PLANS AND SHALL BE RESPONSIBLE FOR VARIATIONS BETWEEN PLAN DIMENSIONS AND ACTUAL FIELD DIMENSIONS. WHERE VARIATIONS ARE FOUND TO OCCUR, THE CONTRACTOR SHALL NOTIFY THE PROJECT ENGINEER IN WRITING PRIOR TO PROCEEDING WITH CONSTRUCTION; NO ADJUSTMENT TO THE WORK WILL BE MADE WITHOUT THE PRIOR APPROVAL OF THE PROJECT ENGINEER.

GENERAL CONTRACTOR SHALL BE RESPONSIBLE FOR GENERAL DEMOLITION INCLUDING REMOVAL OF WALLS, PARTITIONS, DOORS & CEILING & FLOORS. ANY AND ALL CUTTING OF CONCRETE FLOORS, WALLS OR STRUCTURE SHALL BE THE GENERAL CONTRACTOR'S RESPONSIBILITY. CORE DRILLING THROUGH CONCRETE WALLS, FLOORS OR STRUCTURE FOR PIPING OR CONDUIT SHALL BE THE RESPONSIBILITY OF THE SUBCONTRACTOR BY TRADE. FIRESTOPPING OF THESE OPENING SHALL BE DONE BY THE RESPECTIVE SUBCONTRACTOR. REMOVAL OF DEBRIS RESULTING FROM DEMOLITION, CUTTING, AND/OR DRILLING IS THE RESPONSIBILITY OF THE GENERAL CONTRACTOR. PATCHING AND REPAIR OF CONCRETE WALLS, FLOOR, OR STRUCTURE SHALL BE THE RESPONSIBILITY OF THE GENERAL CONTRACTOR; THIS WILL BE ACCOMPLISHED UPON COMPLETION OF THE INSTALLATION OF ANY AND ALL UTILITIES INSTALLED BY THE VARIOUS SUBCONTRACTORS.

21 W. Superior Street  
Suite 500  
Duluth, MN 55802  
  
TEL 218/727-8446  
FAX 218/727-8456  
  
http://www.LHBcorp.com  
  
DULUTH • MINNEAPOLIS



I HEREBY CERTIFY THAT THIS PLAN, SPECIFICATION OR REPORT WAS PREPARED BY ME OR UNDER MY DIRECT SUPERVISION AND THAT I AM A DULUTH REGISTERED ENGINEER UNDER THE LAWS OF THE STATE OF MINNESOTA.

REGISTRATION NUMBER: 459864  
WILLIAM SEAN NICHOLS

Drawing Scale: As indicated

Plot Scale:

Drawing Title:  
**ELECTRICAL DETAILS**

Approved: Division Chief

Approved: Service Director

Project Title:  
**MAMMOGRAPHY SUITE**

Location:  
V.A. MEDICAL CENTER  
ONE VETERANS DRIVE, MINNEAPOLIS, MINNESOTA 55417

Date:  
08/29/2012

Checked:  
WSN

Drawn:  
MSB

Project No.  
LHB: 120110 - VA: 618-12-130

Building Number  
70

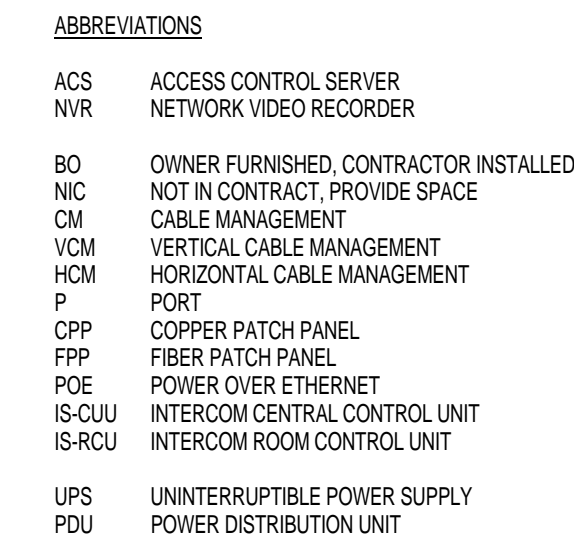
DRAWING NO.  
**1266- ES7.01**

Office of  
Facilities  
Management

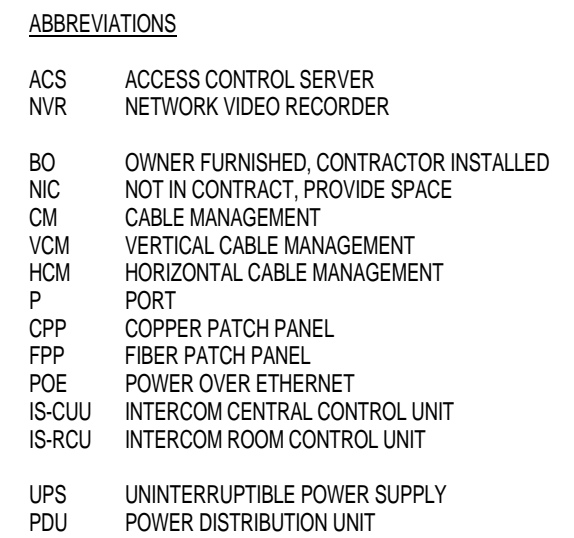
Department of  
Veterans Affairs

CD SUBMITTAL 08/29/2012

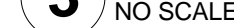
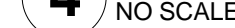




NO SCALE



**U** NO SCAL



GENERAL  
NOTES:

GENERAL CONTRACTOR AND/OR SUBCONTRACTORS SHALL FIELD VERIFY ALL DIMENSIONS SHOWN ON THESE PLANS AND SHALL BE RESPONSIBLE FOR VARIATIONS BETWEEN PLAN DIMENSIONS AND ACTUAL FIELD DIMENSIONS, WHERE VARIATIONS ARE FOUND TO OCCUR. THE GENERAL CONTRACTOR SHALL BE RESPONSIBLE FOR THE PROTECTION OF ALL EXISTING UTILITIES WITHIN CONSTRUCTION. NO ADJUSTMENT TO THE WORK WILL BE MADE WITHOUT THE PRIOR APPROVAL OF THE PROJECT ENGINEER.

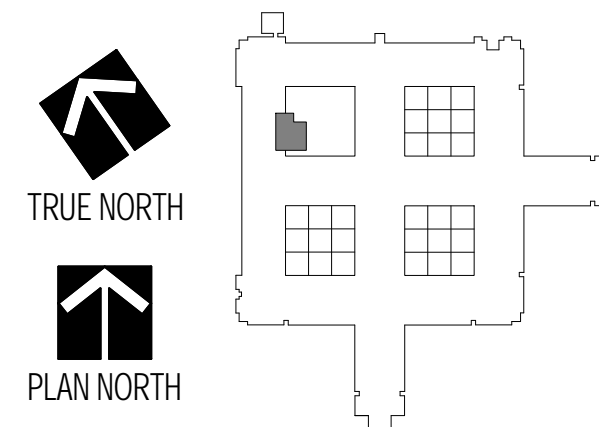
GENERAL CONTRACTOR SHALL BE RESPONSIBLE FOR GENERAL DEMOLITION INCLUDING REMOVAL OF WALLS, PARTITIONS, DOORS & CEILING & FLOORS AND ALL CUTTING OF CONCRETE FLOORS, WALLS OR STRUCTURE SHALL BE THE GENERAL CONTRACTOR'S RESPONSIBILITY. THE GENERAL CONTRACTOR SHALL BE RESPONSIBLE FOR THE PROTECTION OF ALL EXISTING UTILITIES WITHIN CONSTRUCTION. NO ADJUSTMENT TO THE WORK WILL BE MADE WITHOUT THE PRIOR APPROVAL OF THE PROJECT ENGINEER.

RESPONSIBILITY OF THE SUBCONTRACTOR BY TRADE: FREESTANDING OF THESE OPENING SHALL BE DONE BY THE RESPECTIVE TRADE. THE GENERAL CONTRACTOR SHALL BE RESPONSIBLE FOR THE PROTECTION OF ALL EXISTING UTILITIES WITHIN CONSTRUCTION. NO ADJUSTMENT TO THE WORK WILL BE MADE WITHOUT THE PRIOR APPROVAL OF THE PROJECT ENGINEER.

GENERAL CONTRACTOR, PATCHING AND REPAIR OF CONCRETE WALLS, FLOOR, OR STRUCTURE SHALL BE THE RESPONSIBILITY OF THE GENERAL CONTRACTOR. THIS WILL BE ACCOMPLISHED UPON COMPLETION OF THE INSTALLATION OF ANY AND ALL UTILITIES INSTALLED.

<http://www.LHBcorp.com>

DULUTH ■ M



Approved: Division Chief

DRAWING NO.  
1266- ES7.02

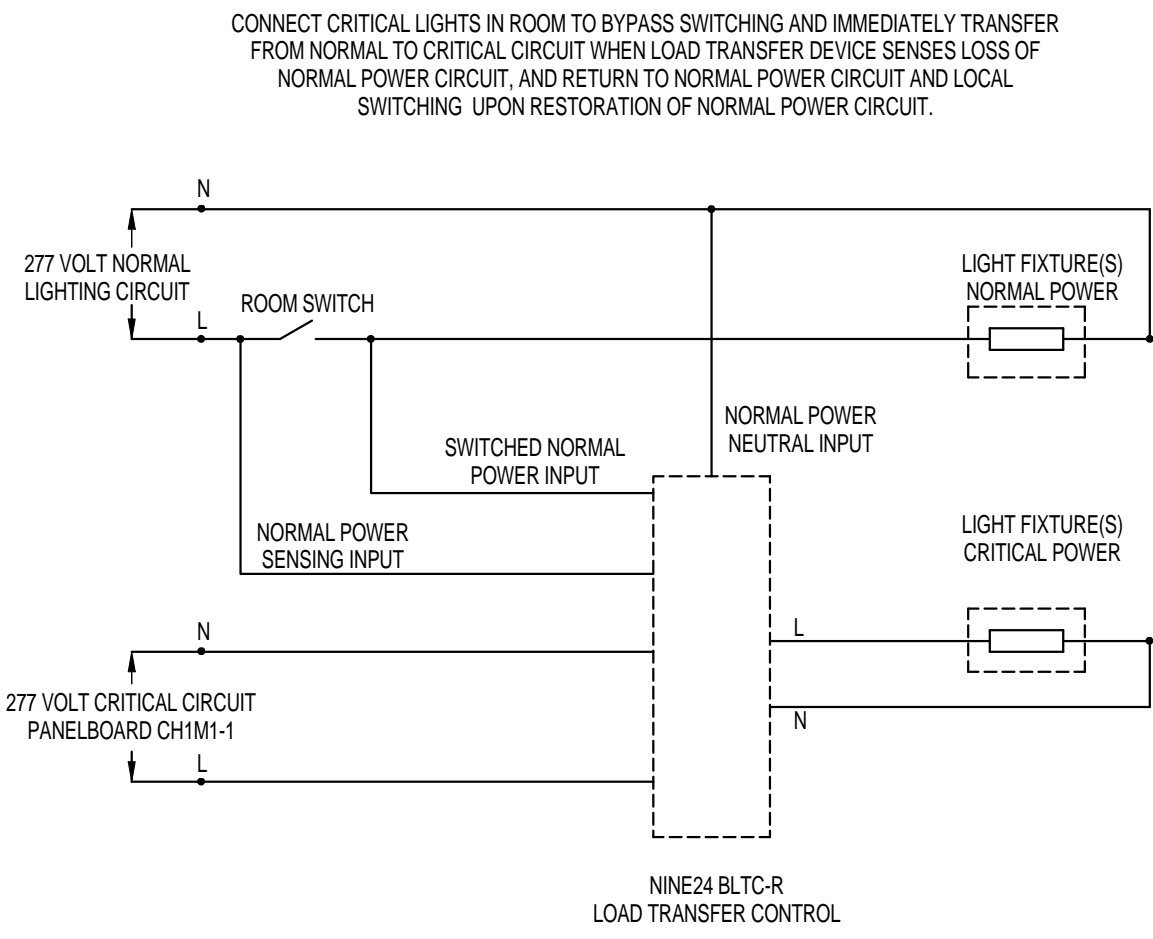


Department of  
Veterans Affairs

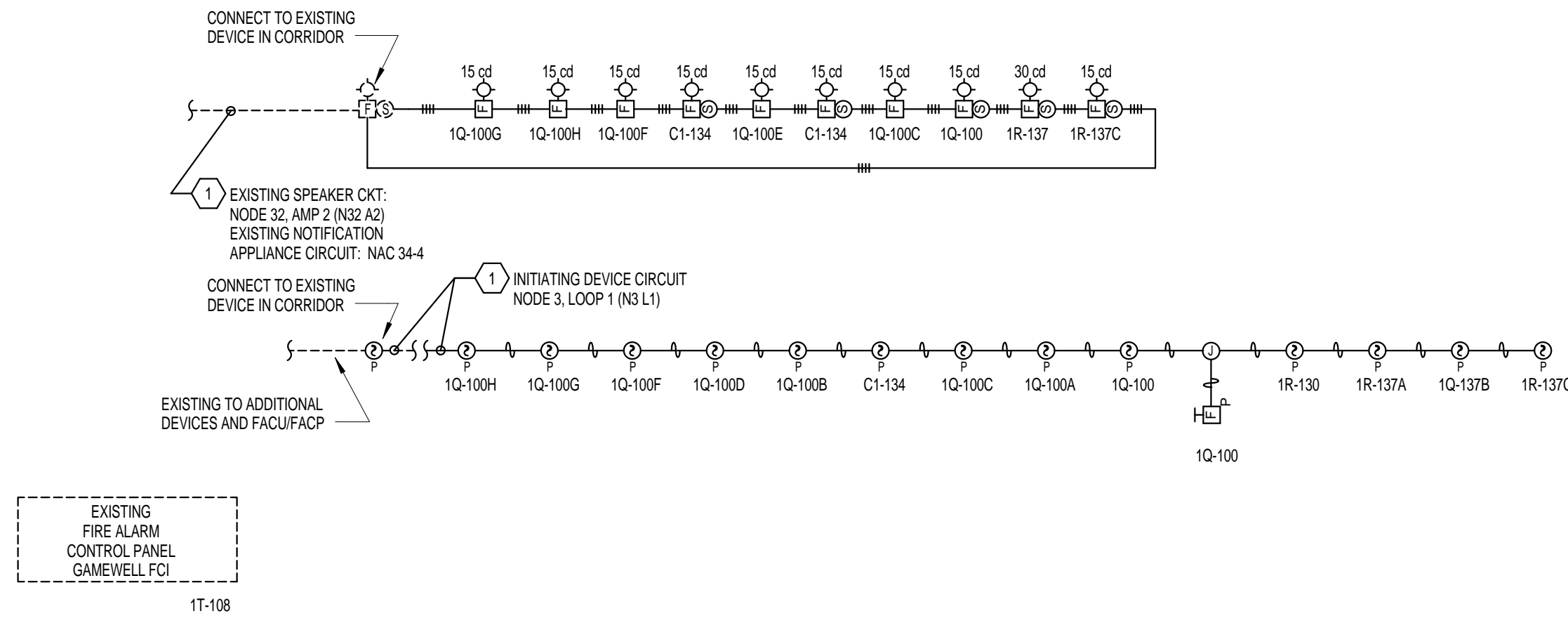
CD SUBMITTAL 08/29/2012



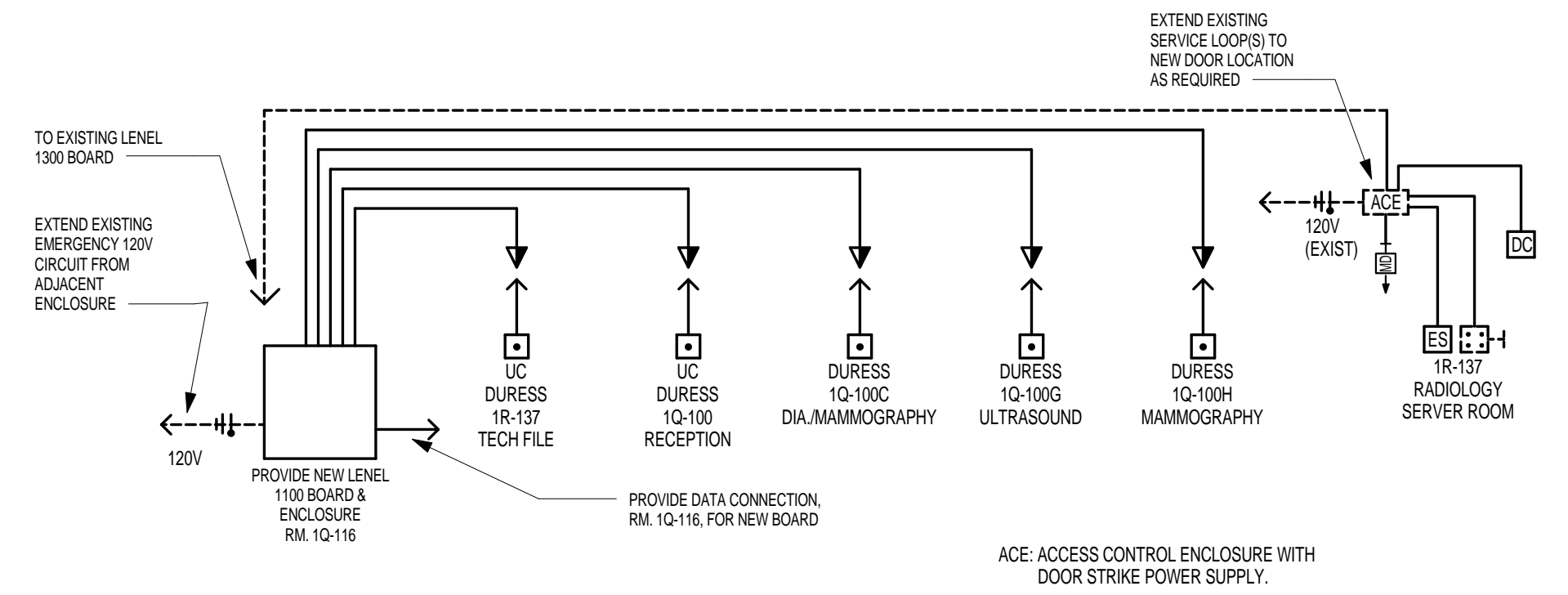
7 LOAD TRANSFER DEVICE CONTROL DIAGRAM - CRITICAL CIRCUIT  
NO SCALE



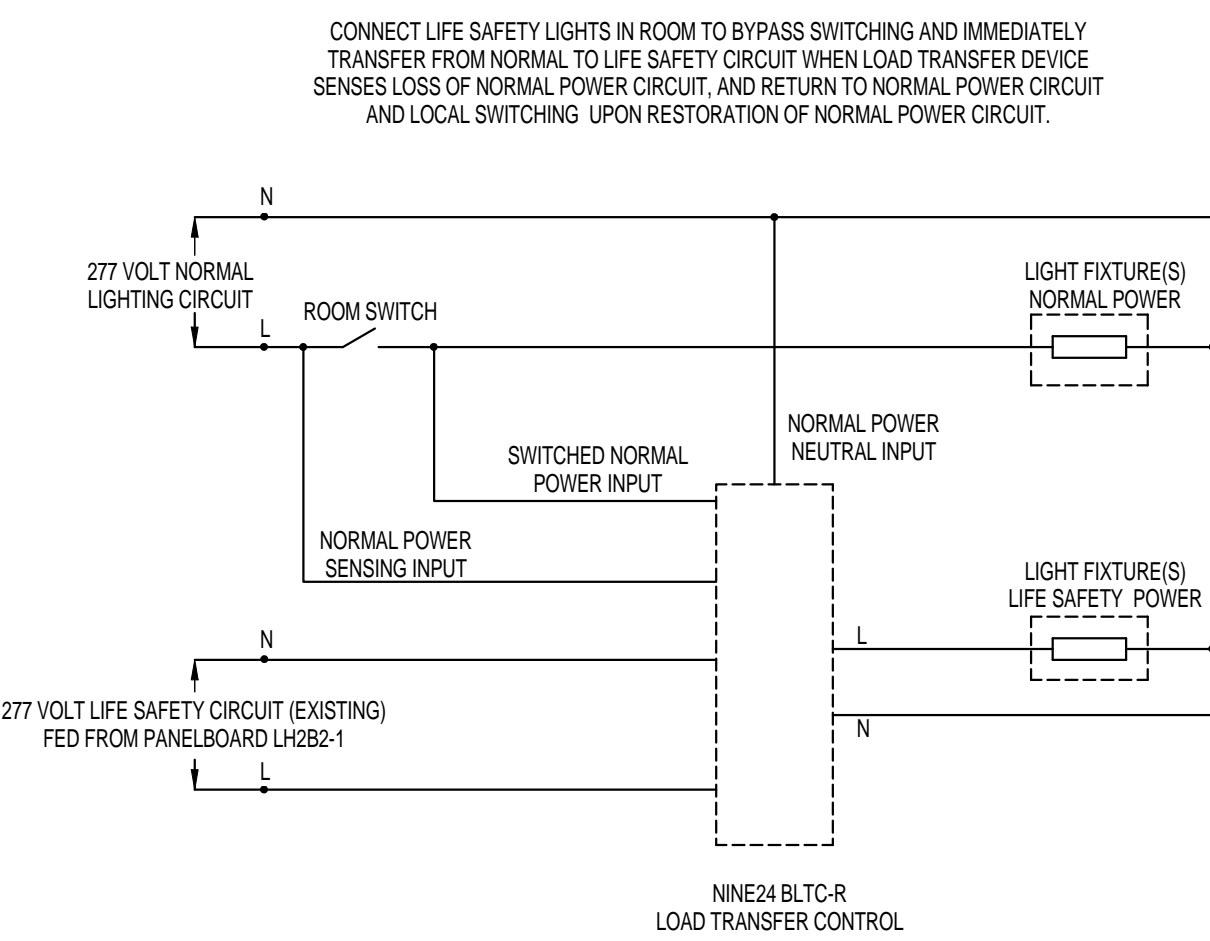
1 FIRE ALARM RISER DIAGRAM  
NO SCALE



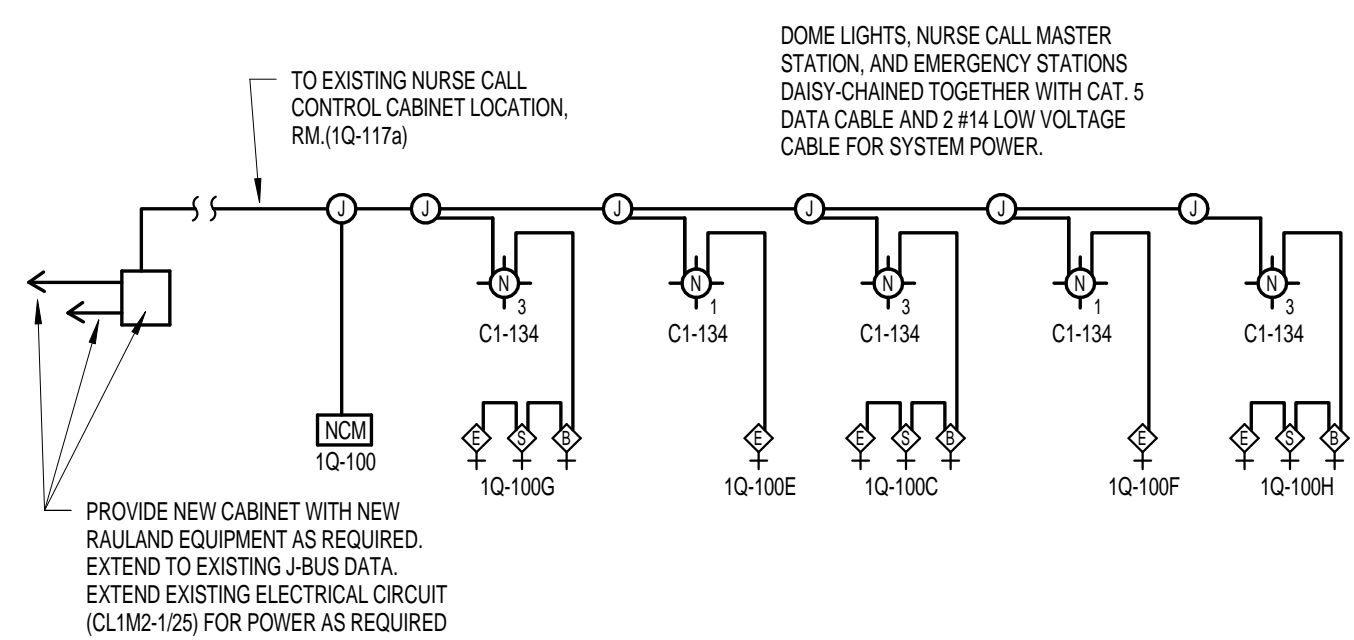
2 SECURITY AND ACCESS CONTROL DIAGRAM  
NO SCALE



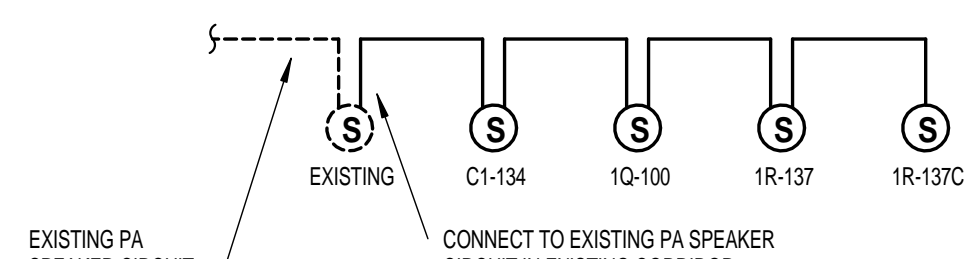
6 LOAD TRANSFER DEVICE CONTROL DIAGRAM - LIFE SAFETY CIRCUIT  
NO SCALE



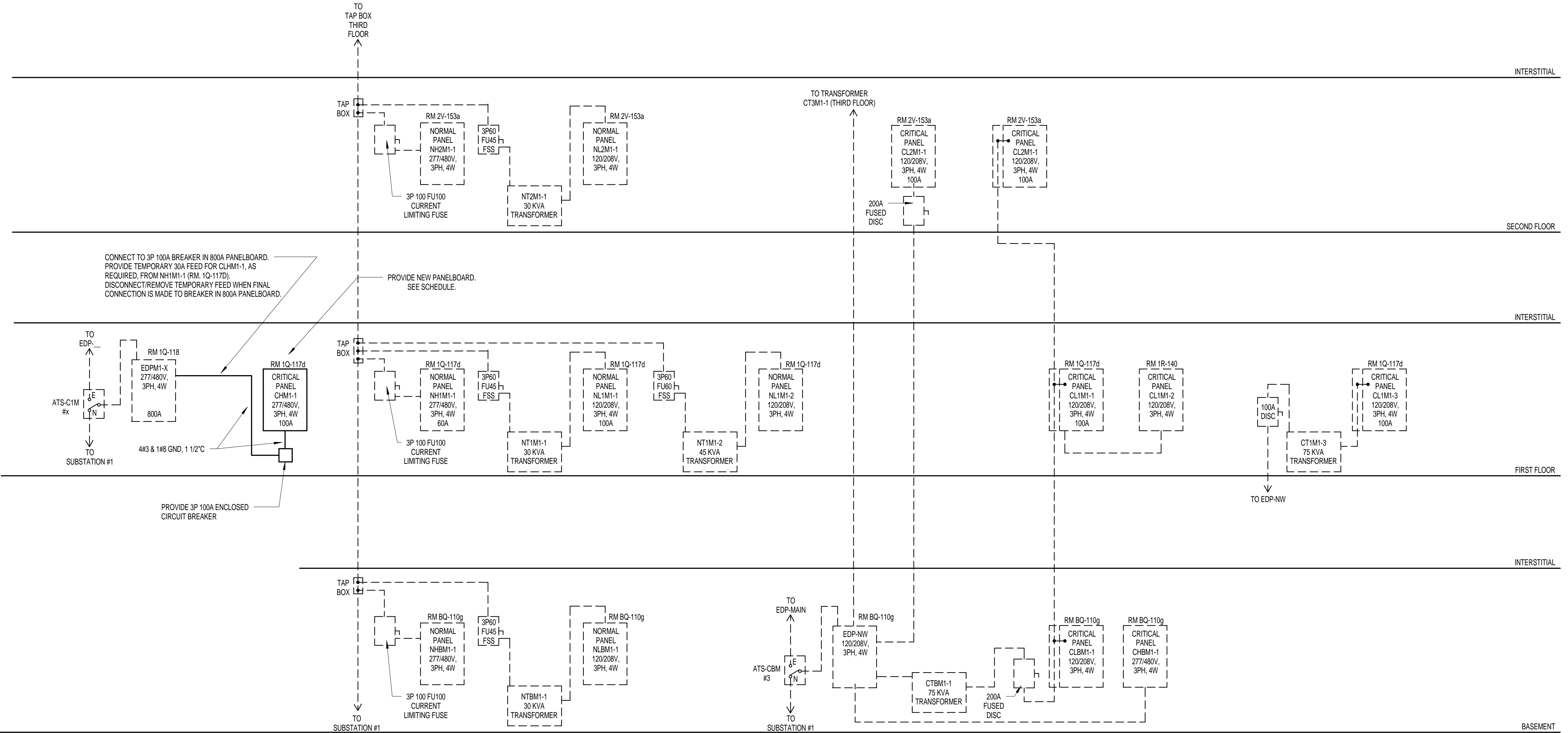
5 NURSE CALL SYSTEM RISER  
NO SCALE



4 PUBLIC ADDRESS SYSTEM EXTENSION RISER  
NO SCALE



3 PARTIAL M1 RISER DIAGRAM  
NO SCALE

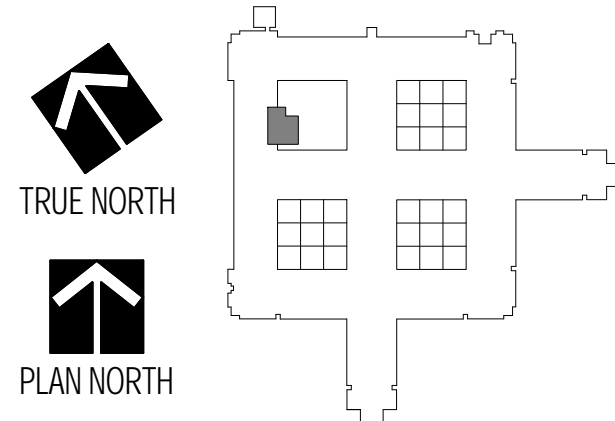
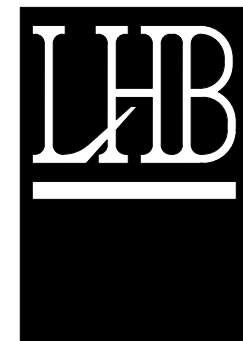


GENERAL NOTES:

GENERAL CONTRACTOR AND/OR ALL SUBCONTRACTORS SHALL FIELD VERIFY ALL DIMENSIONS SHOWN ON THESE PLANS AND SHALL BE RESPONSIBLE FOR VARIATIONS BETWEEN PLAN DIMENSIONS AND ACTUAL FIELD DIMENSIONS. WHERE VARIATIONS ARE FOUND TO OCCUR, THE CONTRACTOR SHALL NOTIFY THE PROJECT ENGINEER IN WRITING PRIOR TO PROCEEDING WITH CONSTRUCTION; NO ADJUSTMENT TO THE WORK WILL BE MADE WITHOUT THE PRIOR APPROVAL OF THE PROJECT ENGINEER.

GENERAL CONTRACTOR SHALL BE RESPONSIBLE FOR GENERAL DEMOLITION INCLUDING REMOVAL OF WALLS, PARTITIONS, DOORS & CEILING & FLOORS. ANY AND ALL CUTTING OF CONCRETE FLOORS, WALLS OR STRUCTURE SHALL BE THE GENERAL CONTRACTOR'S RESPONSIBILITY. CORE DRILLING THROUGH CONCRETE WALLS, FLOORS OR STRUCTURE FOR PIPING OR CONDUIT SHALL BE THE RESPONSIBILITY OF THE SUBCONTRACTOR BY TRADE. FIRESTOPPING OF THESE OPENING SHALL BE DONE BY THE RESPECTIVE SUBCONTRACTOR. REMOVAL OF DEBRIS RESULTING FROM DEMOLITION, CUTTING, AND/OR DRILLING IS THE RESPONSIBILITY OF THE GENERAL CONTRACTOR. PATCHING AND REPAIR OF CONCRETE WALLS, FLOOR, OR STRUCTURE SHALL BE THE RESPONSIBILITY OF THE GENERAL CONTRACTOR. THIS WILL BE ACCOMPLISHED UPON COMPLETION OF THE INSTALLATION OF ANY AND ALL UTILITIES INSTALLED BY THE VARIOUS SUBCONTRACTORS.

21 W. Superior Street  
Suite 500  
Duluth, MN 55802  
TEL 218/727-8446  
FAX 218/727-8456  
http://www.LHBcorp.com  
DULUTH • MINNEAPOLIS



I HEREBY CERTIFY THAT THIS PLAN, SPECIFICATION OR REPORT WAS PREPARED BY ME OR UNDER MY DIRECT SUPERVISION AND THAT I AM A DULY REGISTERED ENGINEER UNDER THE LAWS OF THE STATE OF MINNESOTA.

REGISTRATION NUMBER: 45964  
WILLIAM NICHOLS  
Drawing Scale: As indicated  
Plot Scale:

Drawing Title: ELECTRICAL DIAGRAMS  
Approved: Division Chief  
Approved: Service Director

Project Title: MAMMOGRAPHY SUITE  
Location: V.A. MEDICAL CENTER ONE VETERANS DRIVE, MINNEAPOLIS, MINNESOTA 55417  
Date: 08/29/2012  
Checked: WSN  
Drawn: MSB

Project No.: LHB: 120110 - VA: 618-12-130  
Building Number: 70  
DRAWING NO.: 1266- ES9.01

Office of Facilities Management  
Department of Veterans Affairs

CD SUBMITTAL 08/29/2012