

VA NEBRASKA - WESTERN IOWA HEALTH CARE SYSTEM


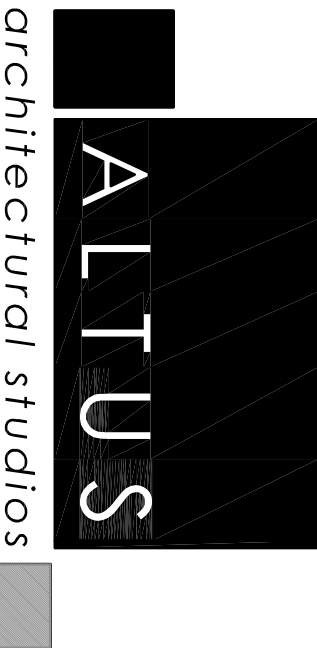

REPLACE PRV STATION

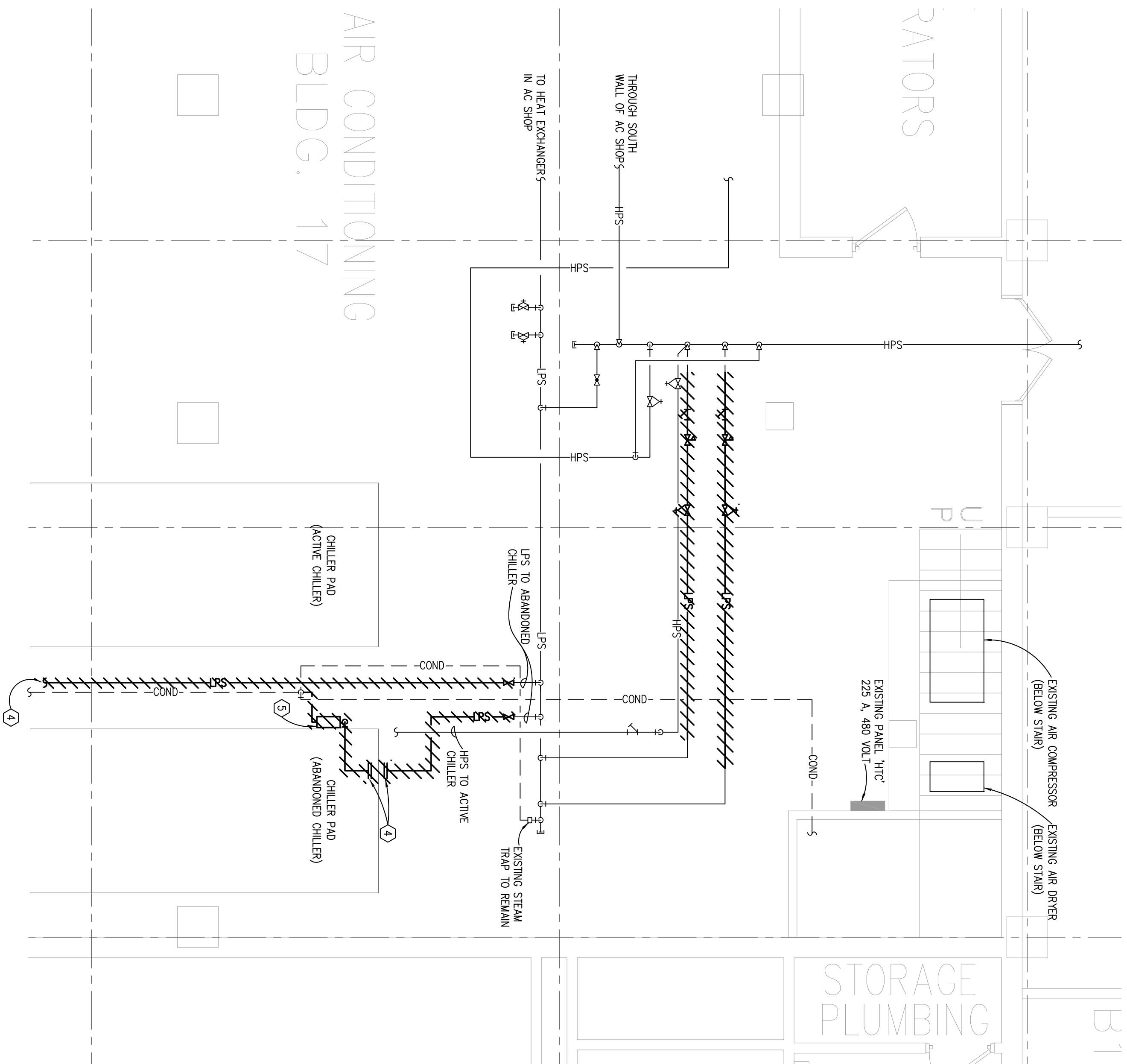
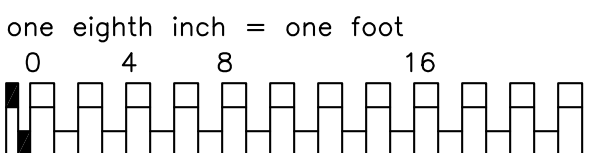
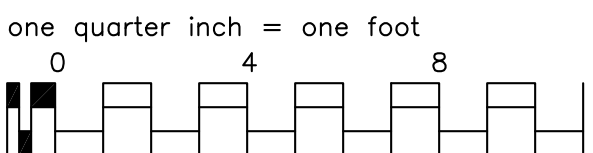
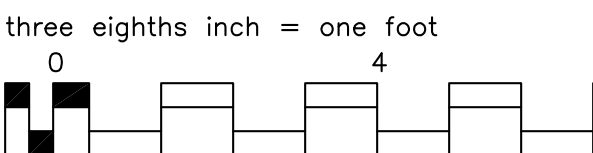
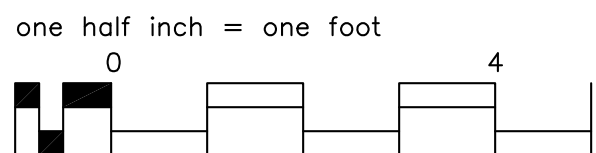
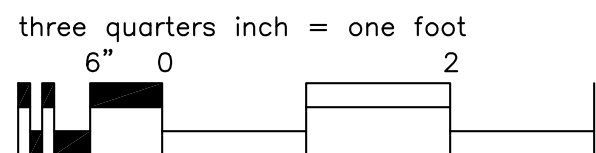
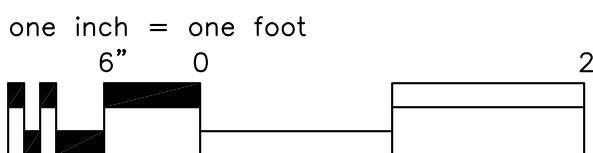
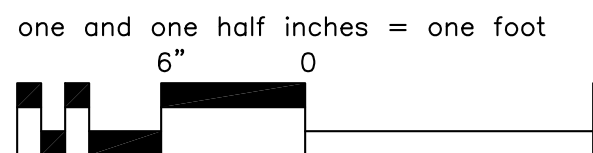
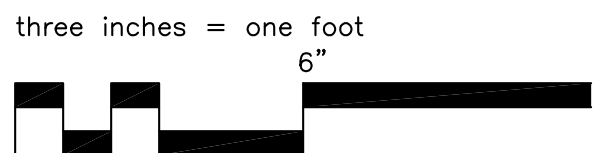
OMAHA DIVISION

4101 Woolworth Avenue, Omaha Nebraska 68105

DWG #	DRAWING TITLE	DATE ISSUED	REV DATE
MECHANICAL DRAWINGS			
GO-1	COVER SHEET & SHEET INDEX	3-05-13	
M1-1	PARTIAL LOWER LEVEL - MECHANICAL ROOM - DEMO & NEW	3-05-13	
M1-2	PARTIAL LOWER LEVEL - MECHANICAL ROOM - DEMO & NEW	3-05-13	
M1-3	PARTIAL 12th FLOOR MECHANICAL ROOM - DEMO & NEW	3-05-13	
M2-1	MECHANICAL SCHEDULES & DETAILS	3-05-13	

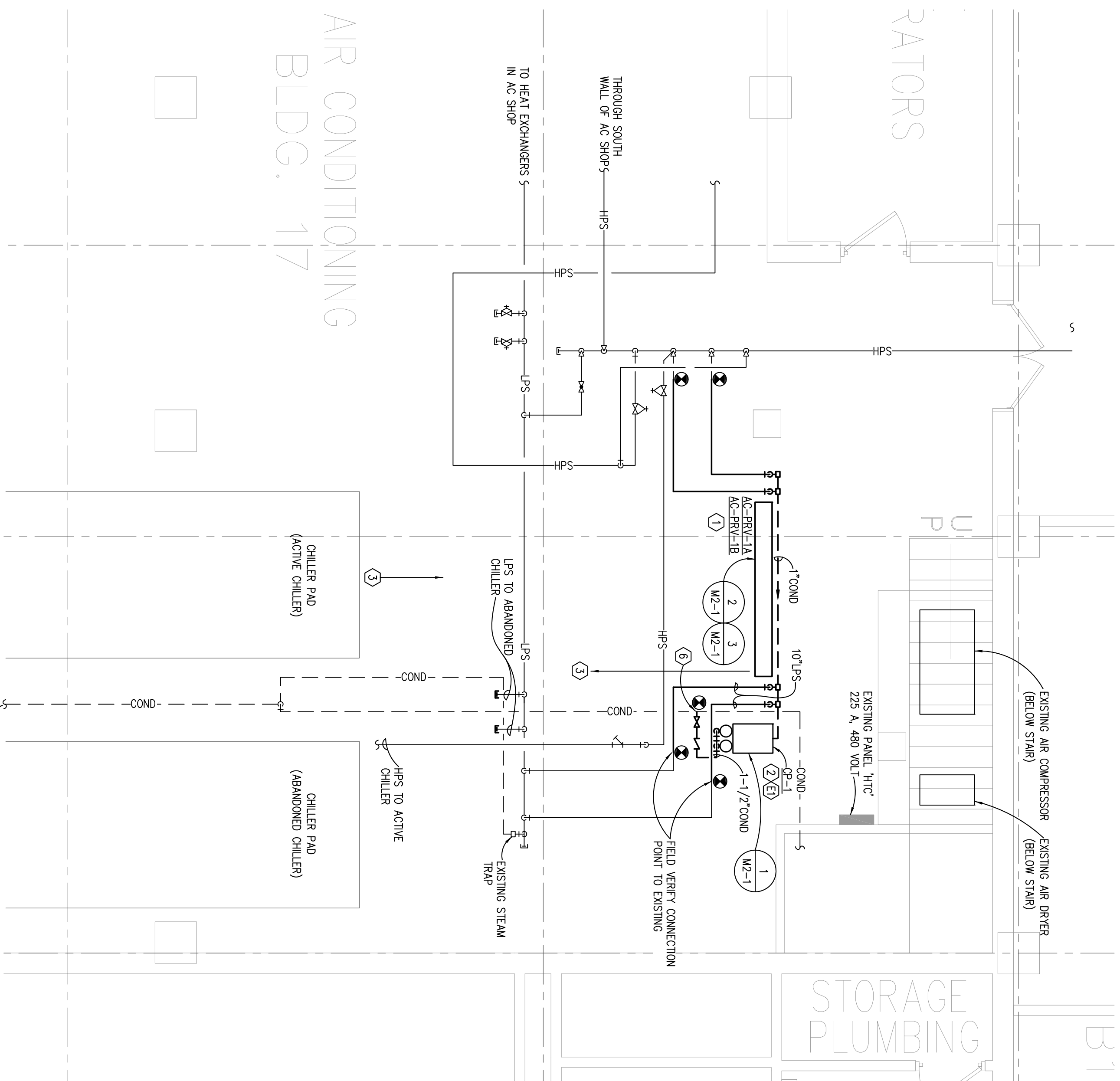
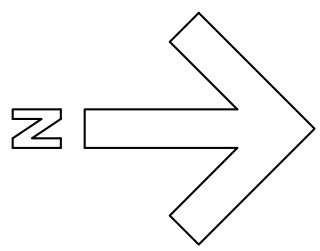
- This project is broken into 3 separate bids:
1. Base Bid - Mechanical Room B024 - see sheet M1-2 & M1-4
 2. Bid Alternate 1 - Building 17 AC shop - see sheet M1-1 & M1-4
 3. Bid Alternate 2 - 12th Floor - see sheet M1-3 & M1-4

Revision		Date	
CONSULTANTS:			
 11735 S. 104th Avenue Omaha, NE 68154 Phone: 402.891.3340 Fax: 402.891.3346 www.spec-engineering.com			
ARCHITECT/ENGINEERS:			
 11705 West Dodge Road Omaha, NE 68154 Phone: 402.334.4222 Fax: 402.334.0023 altusarchitect.com architecture design planning			
Drawing Title		Project Title	
COVER SHEET & SHEET INDEX		NEBRASKA - WESTERN IOWA HEALTH CARE SYSTEM REPLACE PRV STATION	
Approved Project Director		Location OMAHA, NEBRASKA	
		Date 3-05-2013	Checked MMH
			Drawn RCG
		Project Number 636-13-119	
		Bidding Number	
		Drawing Number GO-1	
		Dwg. 1 of 5	
		 Department of Veterans Affairs Office of Construction and Facilities Management	



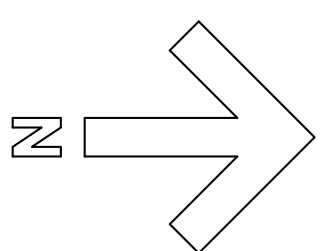
PARTIAL LOWER LEVEL - BUILDING 17 MECHANICAL ROOM - DEMOLITION

SCALE: 1/4" = 1'-0"



PARTIAL LOWER LEVEL – BUILDING 17 MECHANICAL ROOM – NEW

SCALE: 1/4" = 1'-0"



- 1) INSTALL 5/8" DIA. CONCRETE TIE BEFORE CASTING CONCRETE SLAB TO MAINTAIN CONTINUOUS STEEL SERVICE.
- 2) SET NEW CR-10 ON 4" CONCRETE PAD. SEE DETAIL 10 ON SHEET 10.
- 3) MAINTAIN SERVICE CLEARANCE FOR CHILLER, LUBE, MAINTENANCE, CHILLER UPS AND COND EVAP AND OTHER ASSOCIATION.
- 4) REMOVE STEEL RAIL TWO (2) LOCATIONS (EACH END) OF CHILLER CAP COAT AT MAIN.
- 5) CONNECT 1/4" CPD FROM NEW KEY TO EXISTING COND LUBE. REMOVE TIE PIPING AT POINT OF CONNECTION.
- 6) SAFELY RELIEVE VAC FROM STEEL REGULATORS IS EXISTING AND LOCATED NEAR THE HEAT EXCHANGERS AT WEST END OF ROOF.

ELECTRICAL KEYED NOTES

- (E) CONNECT QP-1 TO NEW 20/3 BREAKER IN PANEL '1TC'. PROVIDE 3-#12, #10 G IN 3/4" C. CONTROLS SHALL BE INTEGRAL TO THE PUMP CONTROLLER.

GENERAL NOTES

- A. COORDINATE SHUTDOWN OF UPS HEADERS WITH OWNER.
- B. ANY RELOCATION OF STORAGE UNITS, ETC., IN THE VICINITY OF NEW PRYS TO BE BY OWNER.
- C. DISCONNECT AND INSTALL NEW PRYS STATIONS IN SEQUENCE TO MAINTAIN ONE STATION ON LINE AT ALL TIMES.
- D. SEE SHEET W-1 FOR MECHANICAL SYMBOLS.
- E. WORK SHOWN HALF TONE IS EXISTING TO REMAIN. WORK SHOWN FULL TONE IS NEW. WORK SHOWN HATCHED IS EXISTING TO BE REMOVED.

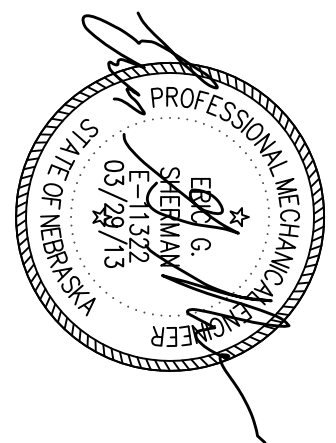
[illegible]

CONSULTANTS:



11235 Davenport Street
Suite 104
Omaha, NE 68154

Phone: 402.991.5520
Fax: 402.991.5394
www.specializedeng.com



ALTUS
architectural studios

12825 West Collier Road
Orlando, FL 32817
Phone: 407.246.4742 Fax: 407.246.5023
H: 407.246.5023
architecture design planning

ARCHITECT/ENGINEERS:

Drawing Title

**PARTIAL LOWER LEVEL BUILDING 17
MECHANICAL ROOM - DEMO & NEW**

Project Title

OMAHA, NEBRASKA

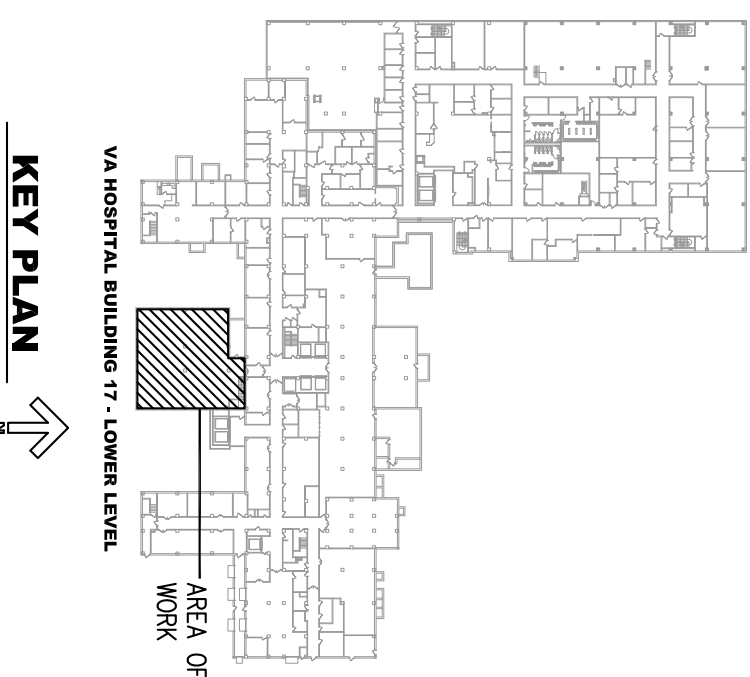
Date _____

03-29-2013

Project Number 636-13-119
Building Number
Drawing Number M1-1 Dwg. 1 of 4

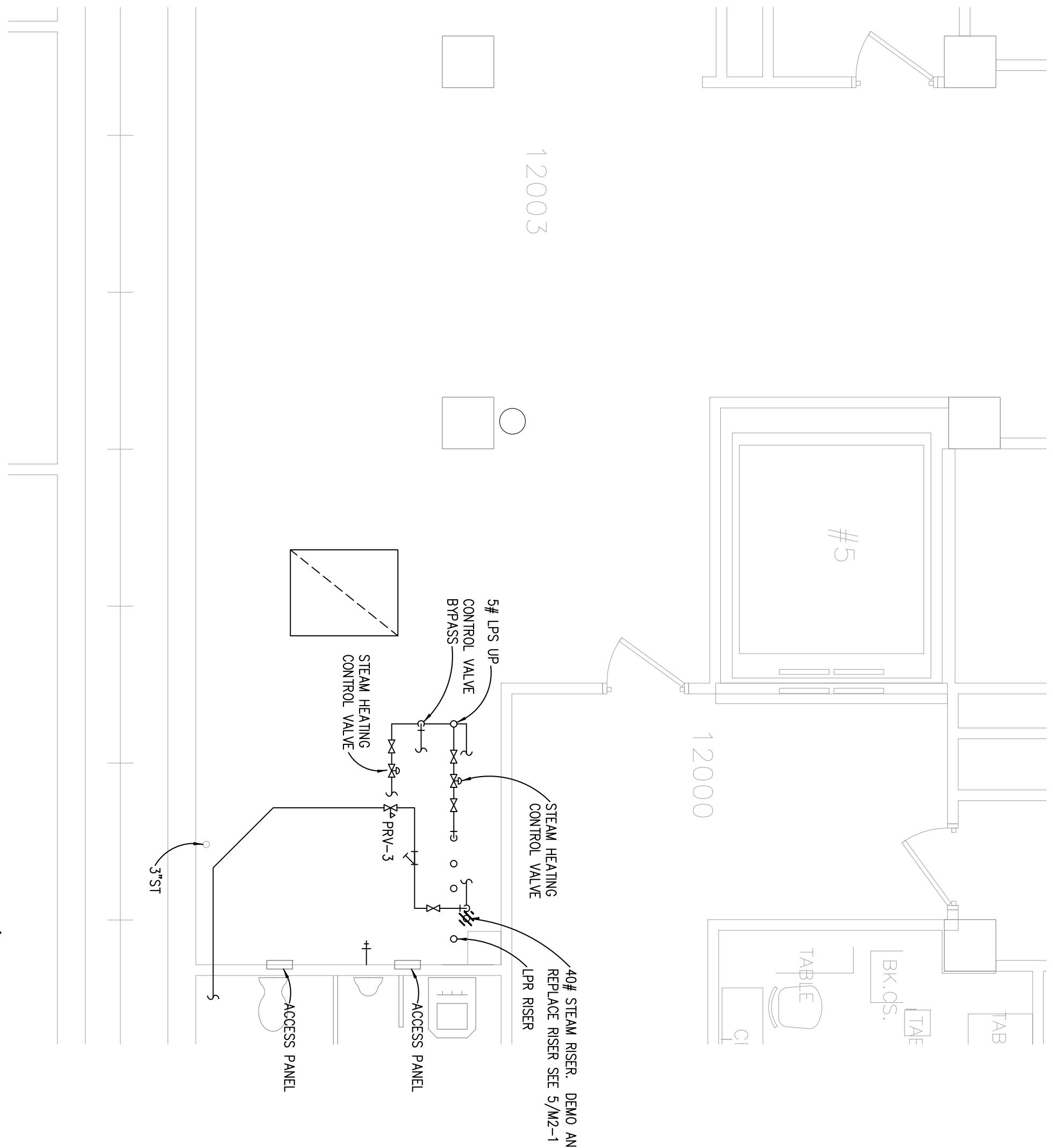
Office of
Construction
and Facilities
Management

Department of
Veterans Affairs

[illegible]

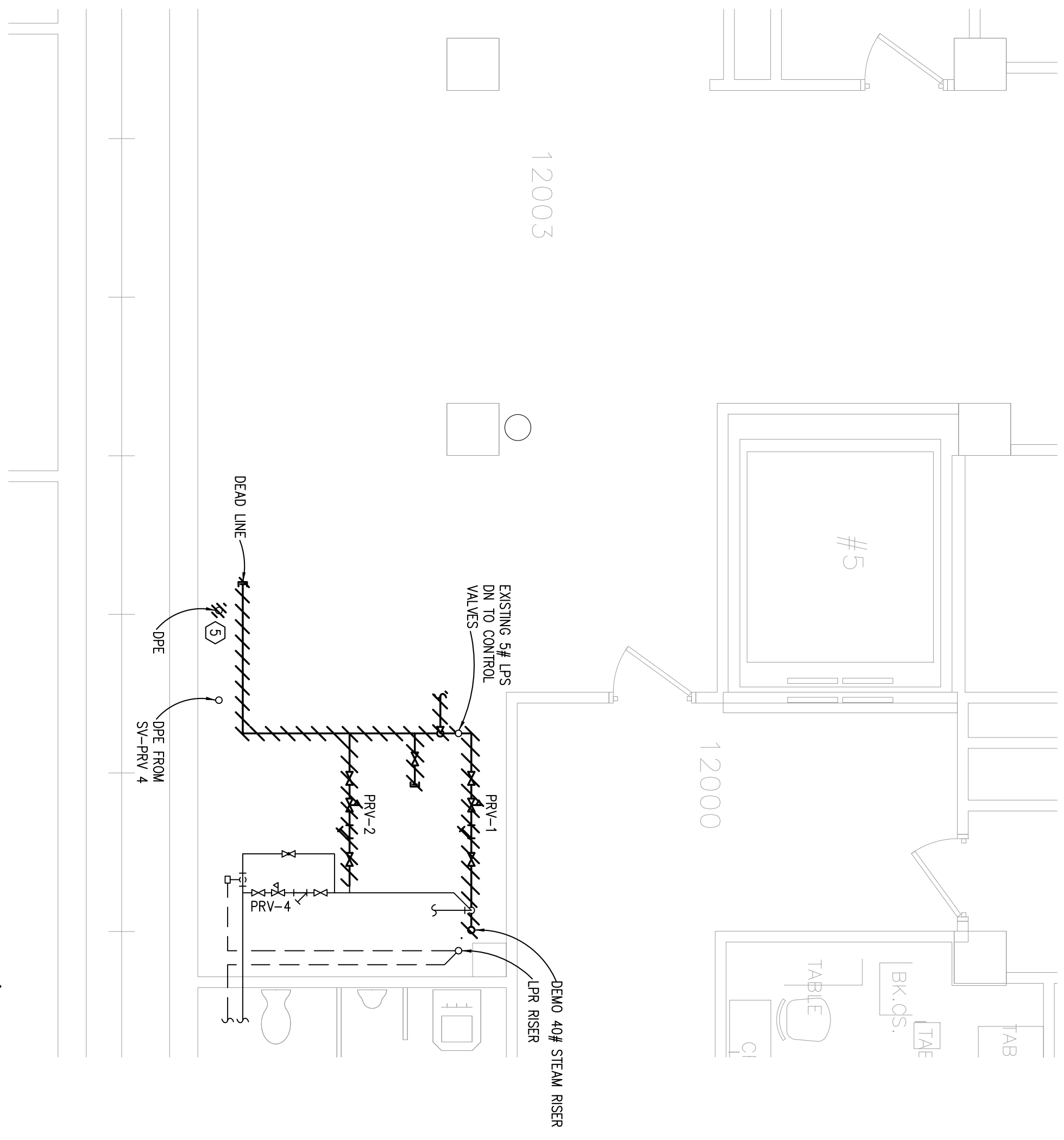
GENERAL NOTES

- A. COORDINATE SHUTDOWN WITH OWNER.
- B. WORK SHOWN HALF TONE IS EXISTING TO REMAIN. WORK SHOWN FULL TONE IS NEW. WORK SHOWN HATCHED IS EXISTING TO BE REMOVED.



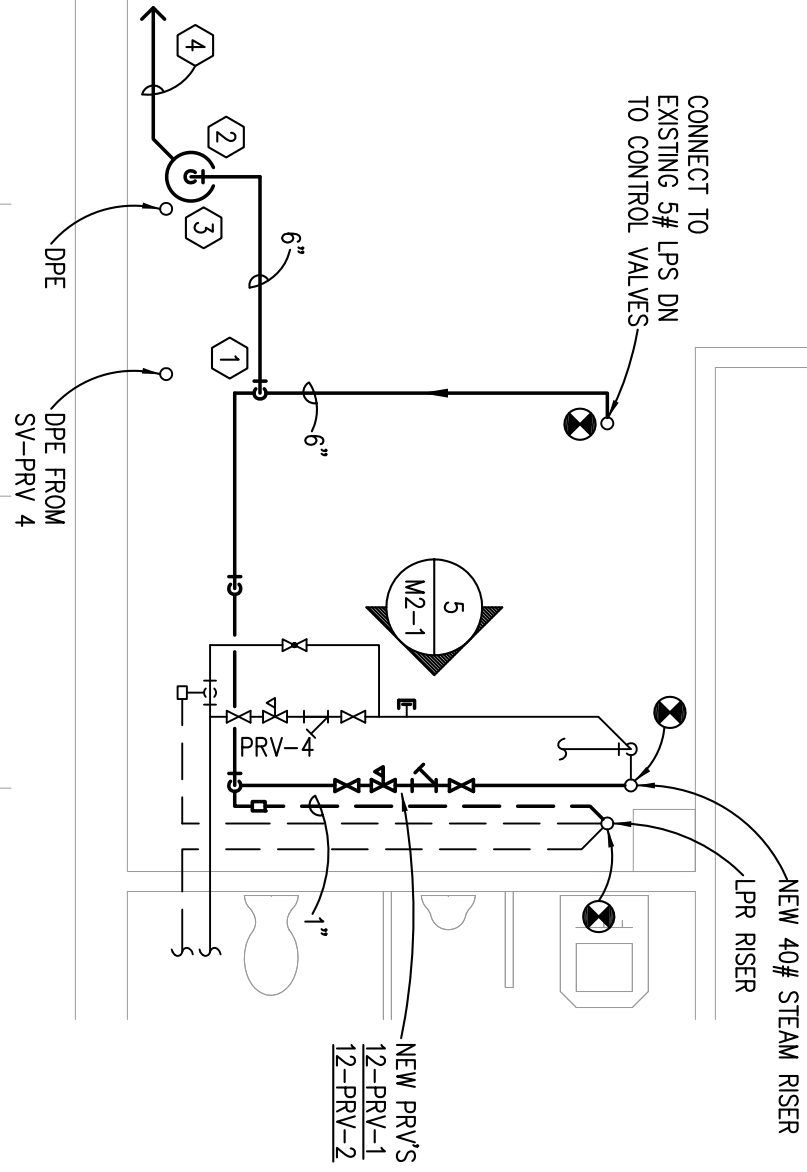
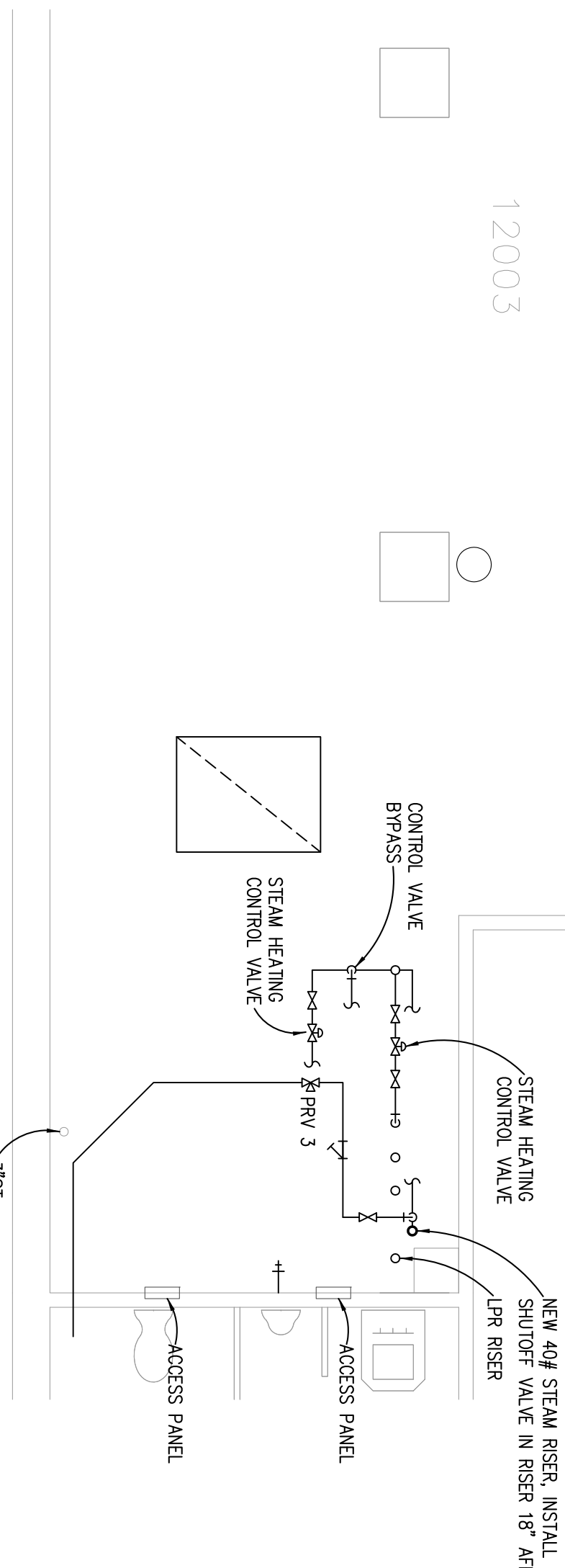
PARTIAL 12th FLOOR - MECHANICAL ROOM 12003-1 - DEMOLITION (LOWER LEVEL PIPE)

SCALE: 1/4" = 1'-0"



PARTIAL 12th FLOOR - MECHANICAL ROOM 12003-1 - DEMOLITION (UPPER LEVEL PIPE)
SCALE: 1/4" = 1'-0"

SCALE: 1/4" = 1'-0"

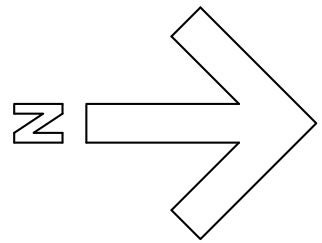
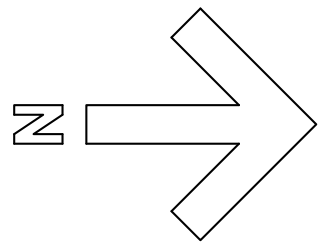


PARTIAL 12th FLOOR - MECHANICAL ROOM 12003-1 - NEW (LOWER LEVEL PIPE)

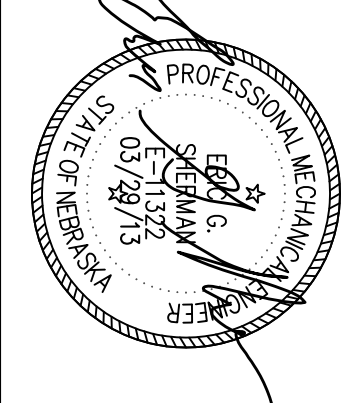
SCALE: 1/4" = 1'-0"

PARTIAL 12th FLOOR - MECHANICAL ROOM 12003-1 - NEW (UPPER LEVEL PIPE)

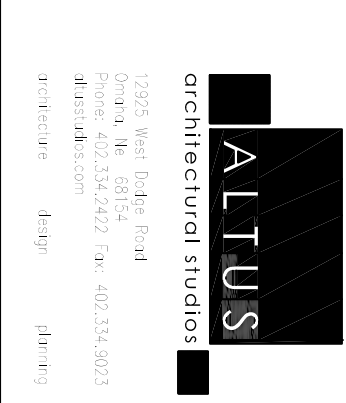
SCALE: 1/4" = 1'-0"

[illegible]

CONSULTANTS:



ARCHITECT/ENGINEERS:



**PARTIAL 12th FLOOR MECHANICAL
ROOM 12003-1 - DEMO & NEW**

Approved: Project Director

Project Title
NEBRASKA - WESTERN IOWA

OMAHA, NEBRASKA

Date _____

Checked

Drawn

2013-01 COPYRIGHT SES PROJ. #12
PERMISSION TO REPRODUCE ANY PART OF THIS DOCUMENT IS HEREBY
GRANTED SOLELY FOR THE PURPOSE OF THE CONSTRUCTION OF THE
PROJECT OR THE ARCHIVING OF THIS PROJECT. UNAUTHORIZED USE
OF THIS DOCUMENT WITHOUT THE WRITTEN PERMISSION OF SPECIALIZED
ENGINEERING SOLUTIONS IS PROHIBITED BY COPYRIGHT LAW.
DO NOT SCALE DRAWING. ALL DIMENSIONS AND CLEARANCES SHALL
BE DERIVED FROM APPROPRIATE SOURCES. ALL WORK SHALL BE
COORDINATED PRIOR TO INSTALLATION. SEE SPECIFICATIONS.

Project Number

Building Number

பிள்ளை இல்லம்

**Construction
and Facilities
Management**

