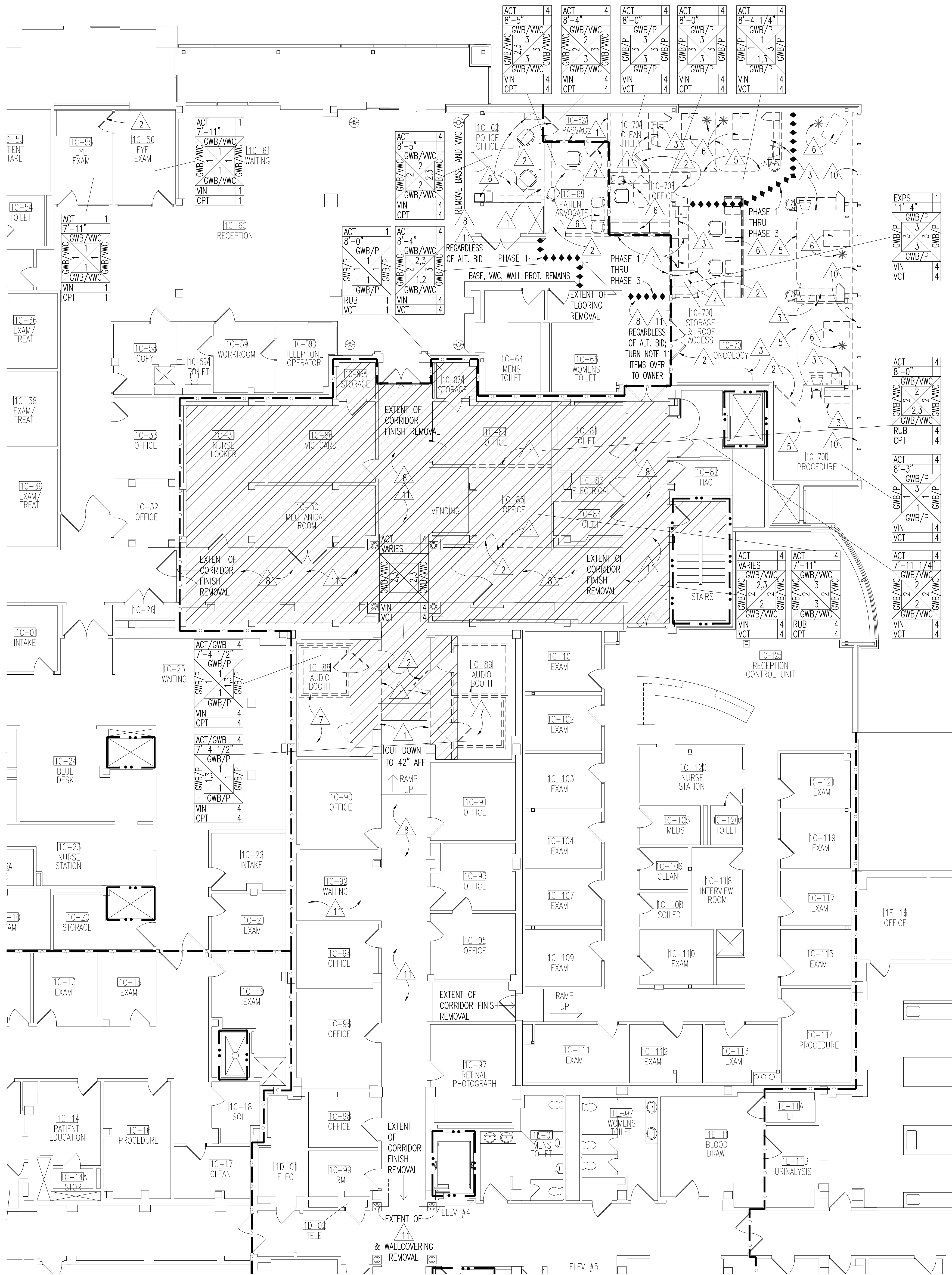


U:\Server Project Data\1001_Erpa_46_Health_Care_System\1000_Dwg\1001_Plan_First_Floor_Demolition.dwg, May 13, 2013 - 9:47am



FIRST FLOOR DEMOLITION PLAN
1/8"=1'-0"

DEMOLITION NOTES

GENERAL

1. REFER TO MECHANICAL DRAWINGS FOR RELATED DEMOLITION OF MECHANICAL CONSTRUCTION.
2. REFER TO ELECTRICAL DRAWINGS FOR RELATED DEMOLITION OF ELECTRICAL CONSTRUCTION.
3. REFER TO ASBESTOS ABATEMENT FOR RELATED DEMOLITION WORK.
4. DISPOSE OF ALL ITEMS NOT SALVAGED BY OWNER.
5. MAINTAIN ACCESS TO ALL EXITS DURING CONSTRUCTION.
6. REFER TO PHASING PLANS FOR PHASED CONSTRUCTION.

DEMOLITION SYMBOLS LEGEND

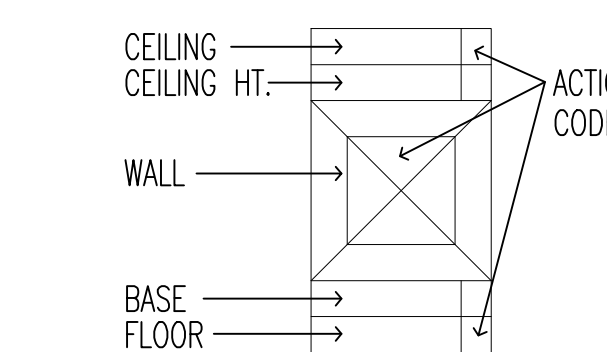
- DEMOLITION AS INDICATED
- AREA OF EXISTING RAISED FLOOR
1. REMOVE PARTITION OR FURRING AS INDICATED.
 2. REMOVE DOOR, FRAME AND HARDWARE.
 3. REMOVE BUILT-IN CASEWORK, MILLWORK OR SHELVING.
 4. REMOVE ACCESS LADDER AND ROOF ACCESS HATCH ABOVE. INFILL ROOF STRUCTURE & PATCH ROOF. SEE DETAIL 3/A6.
 5. REMOVE CUBICLE CURTAIN TRACK.
 6. MODULAR FURNISHINGS, SEATING, TREATMENT CHAIRS AND PORTABLE OR MOVABLE EQUIPMENT TO BE REMOVED, RELOCATED AND/OR STORED BY VA PRIOR TO CONTRACTOR STARTING WORK IN ANY PHASE. COORDINATE WITH VA.
 7. REMOVAL OF AUDIO BOOTHS BY OTHERS.
 8. REMOVE WALL PROTECTION (DEDUCT UNDER ALTERNATE BID UNLESS NOTED OTHERWISE).
 9. REMOVE WINDOW SILL.
 10. REMOVE WINDOW BLINDS.
 11. REMOVE ARTWORK, ACCESSORIES, DISPLAYS, ETC. FOR WALL AND CEILING FINISH REMODELING; SALVAGE FOR REINSTALLATION IN SAME LOCATIONS (UNLESS NOTED OTHERWISE). (DEDUCT UNDER ALTERNATE BID UNLESS NOTED OTHERWISE.)

FINISH ABBREVIATIONS

- AC - ACOUSTIC CEILING TILE
C - CARPET
CT - CERAMIC TILE
CMU - CONCRETE MASONRY UNIT
CONC - EXPOSED CONCRETE
EXPS - EXPOSED STRUCTURE
FRP - FIBERGLASS REINFORCED PANEL
GWB - GYPSUM WALL BOARD
P - PAINT
PL - PLASTER
RUB - RUBBER
SV - SHEET VINYL
TT - TERRAZZO
VN - VINYL BASE
VCT - VINYL COMPOSITE TILE
W - VINYL WALL COVERING

ACTION CODE

1. EXISTING FINISH REMAINS - PATCH TO MATCH WHERE DAMAGED BY DEMOLITION.
2. REMOVE WALL FINISH ONLY. EXISTING PARTITION REMAINS.
3. EXISTING PARTITION OR FURRING TO BE REMOVED AT AREAS DESIGNATED AS DASHED LINES.
4. REMOVE EXISTING FINISH.



RATING LEGEND

1. PROVIDE INDICATED RATING AT NEW PARTITIONS.
 2. CONFIRM & MAINTAIN INDICATED RATING AT EXISTING PARTITIONS AFFECTED BY REMODELING.
- ONE HOUR FIRE
- TWO HOUR FIRE
- SMOKE COMPARTMENT
- ONE HOUR FIRE/SMOKE
- TWO HOUR FIRE/SMOKE
- NON-COMBUSTIBLE TEMPORARY CONSTRUCTION BARRIER. PROVIDE CONSTRUCTION ACCESS DOORS IN BARRIER AT LOCATIONS TO BE DETERMINED BY VA AND CONTRACTOR.



Dept. of Veterans Affairs
Health Care System
2101 Elm Street North
Fargo, ND 58102

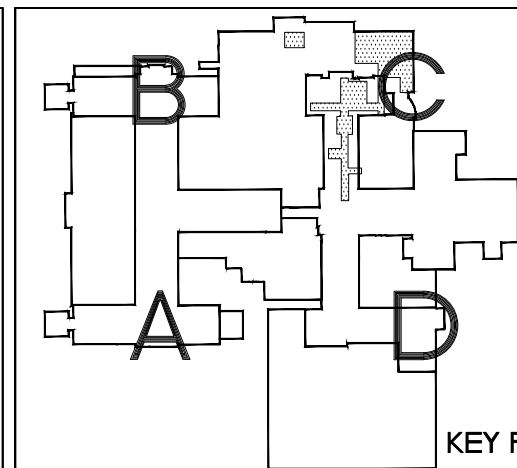


IMAGE GROUP INC.
403 CENTER AVENUE, SUITE 300
MOORHEAD, MN 56560

IMAGE GROUP INC., Architecture & Interiors
OBERMILLER NELSON ENGINEERING, Mechanical Engineers
MEN ENGINEERING, Electrical Engineers

I hereby certify that this plan specification, or report was prepared by me or under my direct supervision, and that I am duly Registered Architect under the laws of the State of North Dakota.

Date 5/9/2013 Reg. No. 378



Drawing Title
FIRST FLOOR DEMOLITION
PLAN

VA Project No.

437-13-104

Building No.

1, 46

Contract No.

VA263-P-1217

AutoCAD File Name

Plan_First_Demo.dwg

Project Title
FARGO VA HEALTH CARE SYSTEM
RENOVATE FIRST FLOOR,
BUILDING 1

Designed By

Checked By

Drawn By

Location
FARGO VA HEALTH CARE SYSTEM
FARGO, ND

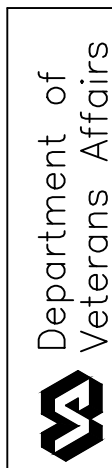
Date
MAY 10, 2013

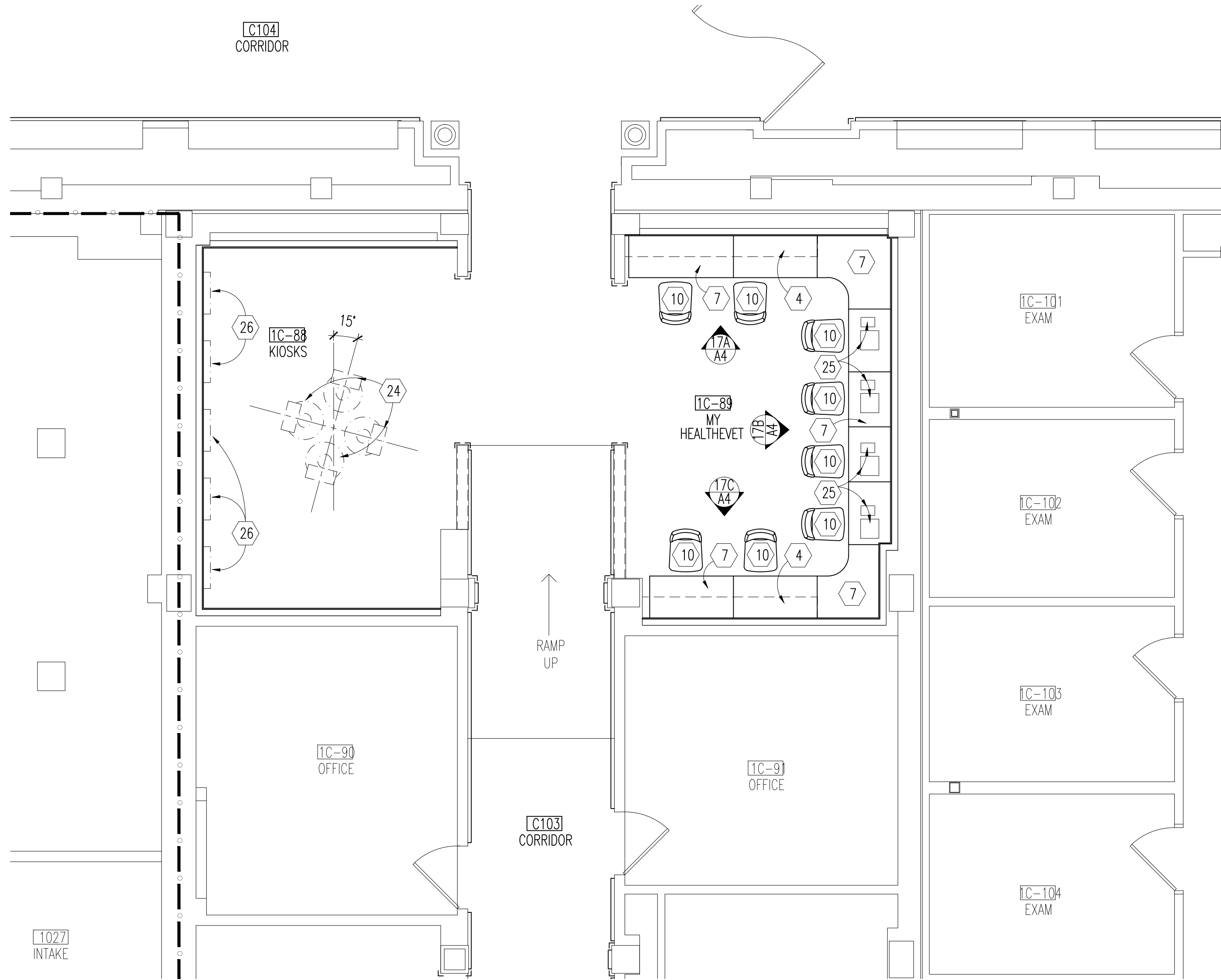
1/8"=1'-0"

Drawing No.

A1

Dwg. 3 of 25





KIOSK/MY HEALTH E-VET EQUIPMENT PLAN
1/4"=1'-0"

FOOD SERVICE EQUIPMENT SCHEDULE													
EQUIPMENT SPECIFICATIONS				PREFERRED ENERGY SOURCE				PLUMBING			ALTERNATE ENERGY SOURCE		
NO.	ITEM	MODEL	SIZE L/W/H	SUPPLIER/INSTALLER	ELECTRICAL WALL	POWER/UP	STEAM	GAS	WATER HOT	COLD	WASTE	ELEC	STEAM
2	COUNTER UNIT W/ GATE & STORAGE DOORS	FABRICATED	108/36/36	KC	STUB UP	208/1	45A						
3	BACKBAR COUNTER UNIT W/ SINK	FABRICATED	144/30/36	KC					X	X	X		
4	UNDERCOUNTER REFRIGERATOR	TRUE TUC-48-LP	48/30/29	KC	6" AFF	115/1	5A						
5	UNDERCOUNTER REFRIGERATOR	TRUE TUC-36-LP	36/30/29	KC	12" AFF	115/1	6.1A						
6	ESPRESSO MACHINE W/WATER FILTER	VERISMO 701	17/21/30	KC	BUILT IN				3/8"	FLOOR DRAIN			
8	COFFEE BREWER	FETCO CBS-2052e	22/22/37	KC	48" AFF	120/1	2.3A		3/8"				
9	MENU BOARD	MAINSTREET	30/3/36	KC									
10	TRASH CAN	VCS BUYOUT		KK									
11	BLENDER	VCS BUYOUT	7/8/16	KC	48" AFF	120/1	13A						
12	AIR POT (6)	FETCO	8dia./13	KK									
13	CONDIMENT STAND	FABRICATED	48/24/36	KC									
14	AIR SCREEN REFRIGERATOR	STRUCT CONCEPTS BB2	66/24/82	KC	18" AFF	220/1/60	12.9A						
15	CASH REGISTER	VCS BUYOUT		KC	BUILT IN								
16	24" TABLE W/ CHAIRS	VCS BUYOUT	24/24/30	KC									
17	ICE MAKER (2)	MANITOWAC QM45 W/ 4" LEGS	19/22/32	KC	12" AFF	115/1	5.2A		3/4"	FLOOR DRAIN			
18	PENDANT LIGHTS	TECH LIGHTING 700 FJ FIRAS-LED		KC	ABOVE CLG	120/1	15A						
19	ICED TEA BREWER	BUNN TB30 W/ TD0-4	9/18/34	KC	BUILT IN	120/1	15A		1/4"				
22A	STORAGE SHELVES	VCS BUYOUT	36/18/87	KC									
22B	STORAGE SHELVES	VCS BUYOUT	48/18/87	KC									
P1	BAKERY DISPLAY COUNTERTOP	STRUCTURAL CONCEPTS D62422	26/29/22	KC	48" AFF	120/1	.61A						

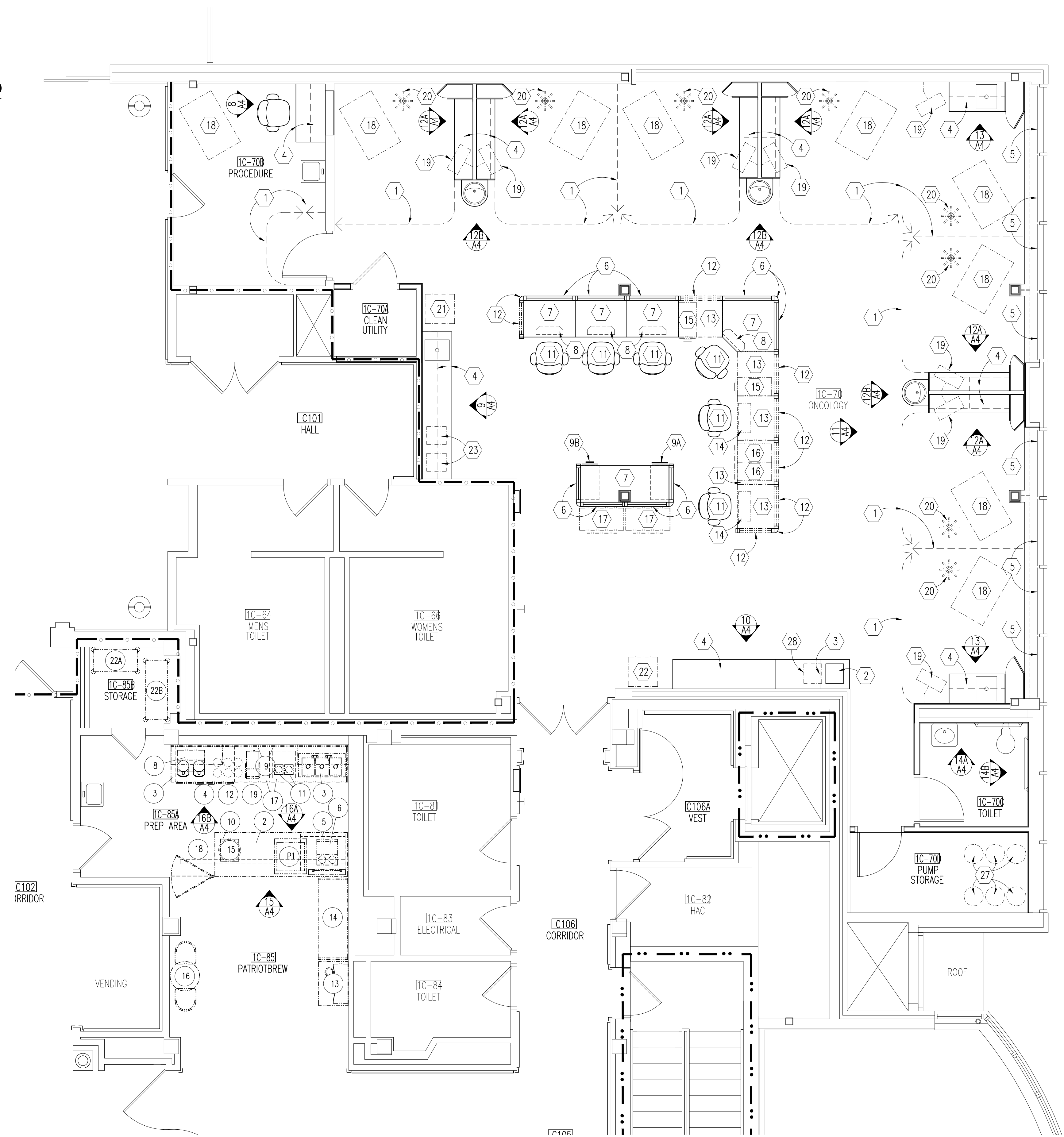
CC = VAMC CONTRACTOR SUPPLY AND INSTALL
KC = CANTEEN SUPPLY AND VAMC CONTRACTOR INSTALL
KK = CANTEEN SUPPLY AND CANTEEN INSTALL

NOTE:
1. FABRICATE COUNTER PIECES NO LONGER THAN 8'-0" FOR EASE OF DELIVERY. IF SHOWN LARGER ABOVE, BREAK INTO MULTIPLE PARTS

NOTE: VERIFY ALL EQUIPMENT WITH VA CANTEEN CHIEF PRIOR TO BEGINNING ROUGH-IN WORK.

ELEVATION NOTES LEGEND

- CUBICLE CURTAIN TRACK (CC)
- ICE MACHINE (CC)
- REFRIGERATOR (CC)
- MILLWORK (CC)
- ALUMINUM HORIZONTAL BLINDS (CC)
- 38" HIGH POWERED FRAME AND TWO (2) 16" HIGH STACKING FRAMES ABOVE WITH ONE (1) 32" HIGH FABRIC FACE TILE AND TWO (2) 16" HIGH GLAZED WINDOW TILES EACH SIDE (VC)
- MODULAR WORK SURFACE (CC)
- KEYBOARD TRAY (CC)
- FILE/FILE PEDESTAL (CC)
- BOX/BOX/FILE PEDESTAL (CC)
- ARM CHAIR (CC)
- TASK CHAIR (CC)
- EXISTING 38" HIGH POWERED FRAME AND TWO (2) 16" HIGH STACKING FRAMES ABOVE WITH ONE (1) 32" HIGH FABRIC FACE TILE AND TWO (2) 16" HIGH GLAZED WINDOW TILES EACH SIDE (VC)
- EXISTING MODULAR WORK SURFACE (VC)
- EXISTING KEYBOARD TRAY (VC)
- EXISTING BOX/BOX/FILE PEDESTAL (VC)
- EXISTING FILE/FILE PEDESTAL (VC)
- EXISTING LATERAL FILE (VC)
- TREATMENT CHAIR (VV)
- TELEVISION WITH BRACKET (VV)
- I.V. POLE (VV)
- OMNICELL (VV)
- SCALE (VV)
- FAX OR PRINTER (VV)
- FREESTANDING KIOSK (VV)
- DESKTOP KIOSK AND PHONE (VV)
- LITERATURE RACK (VV)
- PUMP (VV)
- COFFEE MAKER (VV)



ONCOLOGY EQUIPMENT PLAN
1/4"=1'-0"



Dept. of Veterans Affairs
Health Care System
2101 Elm Street North
Fargo, ND 58102

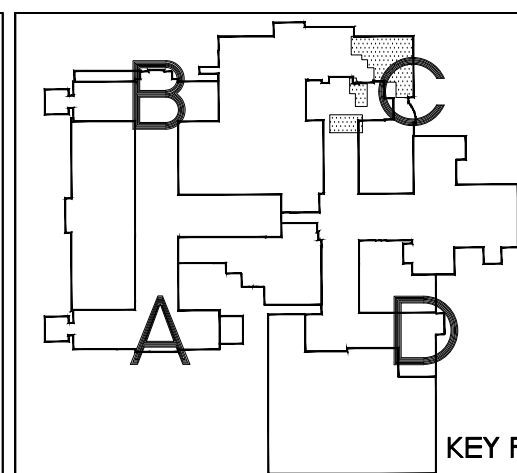


IMAGE GROUP INC.
403 CENTER AVENUE, SUITE 300
MOORHEAD, MN 56560

IMAGE GROUP INC., Architecture & Interiors
OBERMILLER NELSON ENGINEERING, Mechanical Engineers
MEN ENGINEERING, Electrical Engineers

I hereby certify that this plan specification, or report was prepared by me or under my direct supervision, and that I am duly Registered Architect under the laws of the State of North Dakota.

Date 5/9/2013 Reg. No. 378



Drawing Title
FIRST FLOOR EQUIPMENT PLANS

VA Project No.
437-13-104

Building No.
1, 46

Contract No.
VA263-P-1217
VA263-C-

AutoCAD File Name
Plan_Equip.dwg

Project Title
**FARGO VA HEALTH CARE SYSTEM
RENOVATE FIRST FLOOR,
BUILDING 1**

Designed By
RM

Checked By
RM

Drawn By
KS

Location
**FARGO VA HEALTH CARE SYSTEM
FARGO, ND**

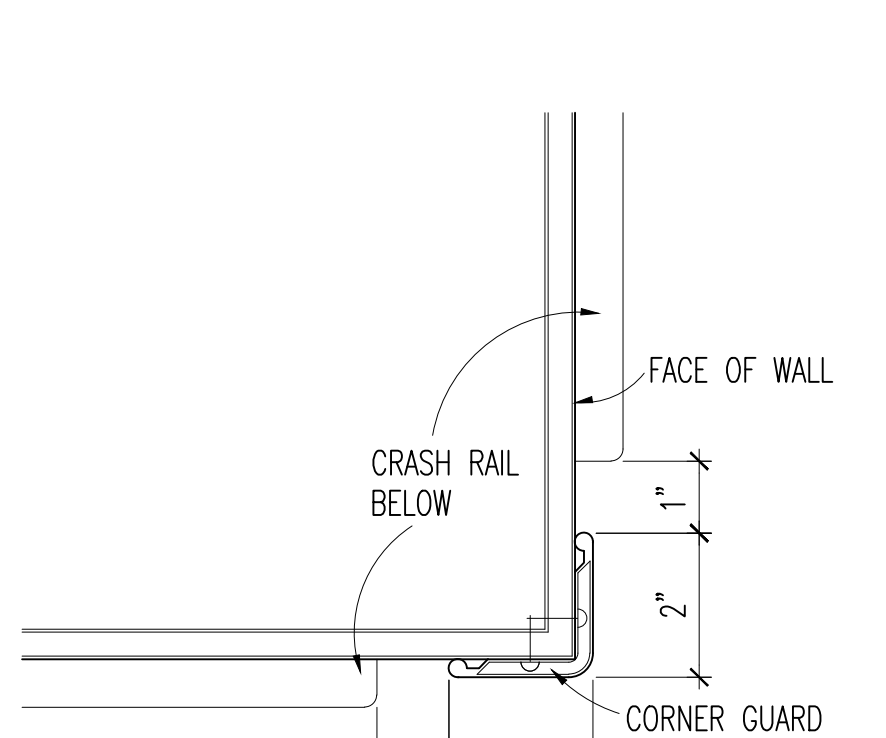
Date
MAY 10, 2013

AS SHOWN

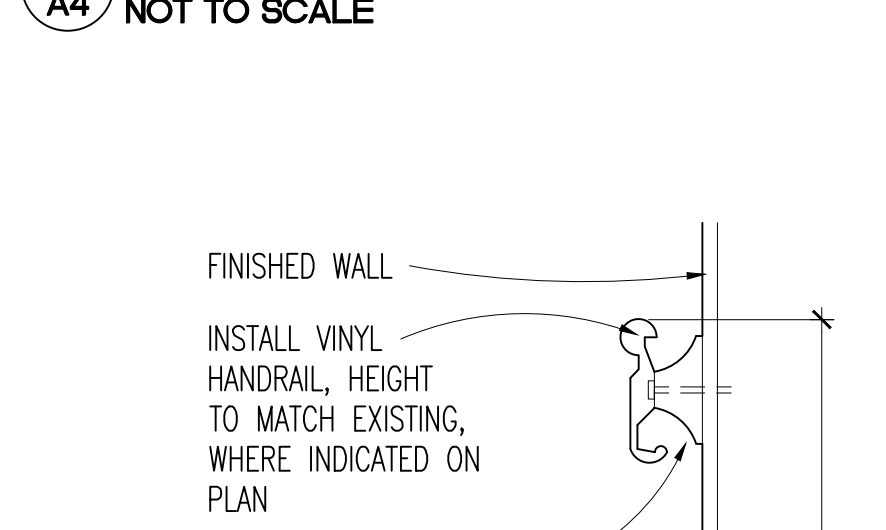
Drawing No.
A3

Dwg. 5 of 25

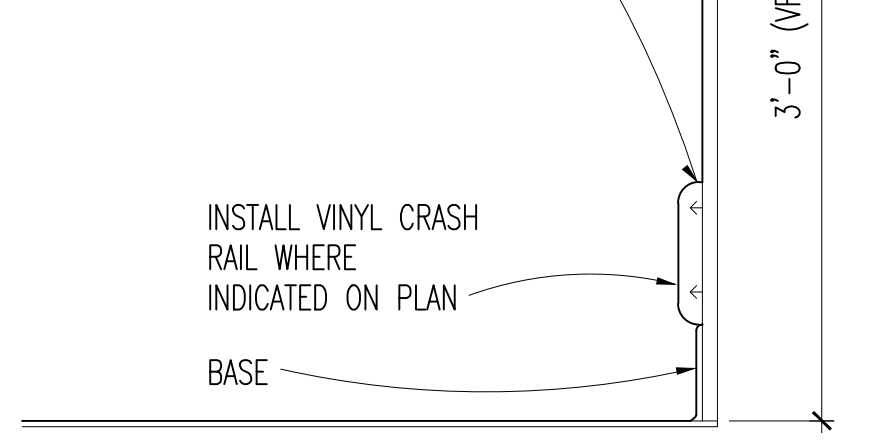




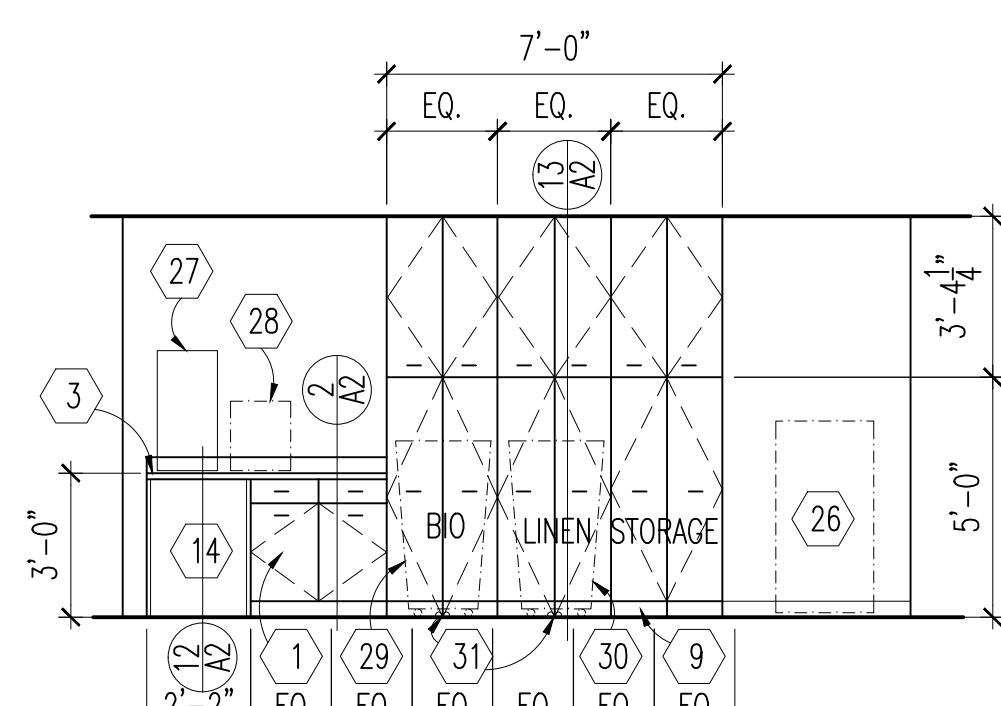
2 CORNER GUARD
A4 NOT TO SCALE



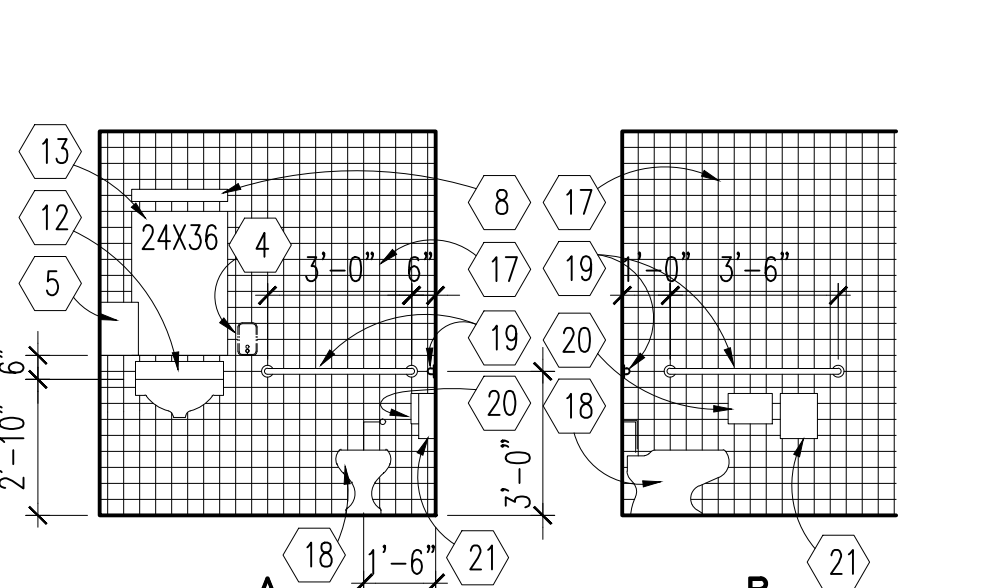
4 ROLLING GRILLE HEAD
A4 1 1/2'-1'-0'



6 ROLLING GRILLE JAMB
A4 11 1/2"=1'-0"



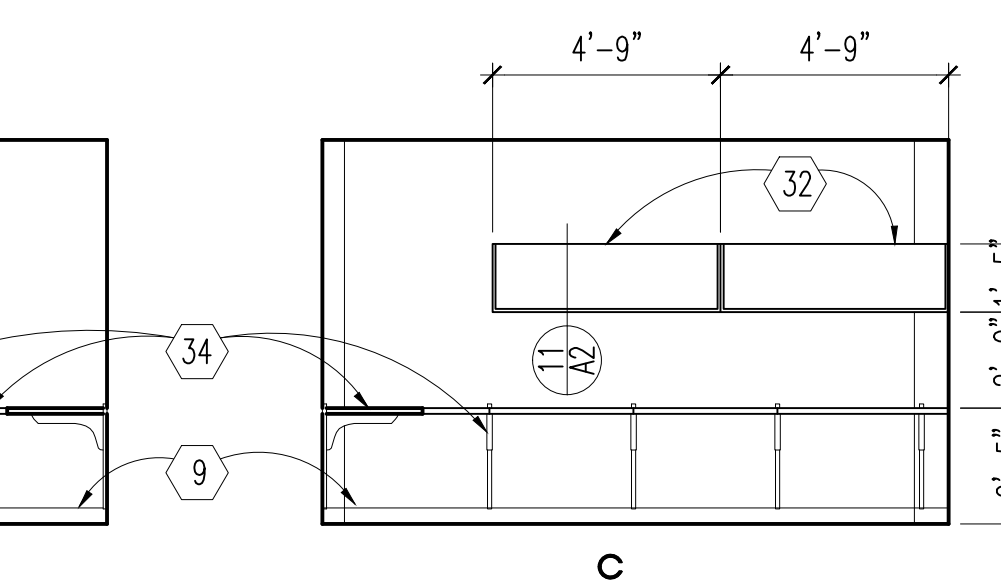
9 ONCOLOGY - 1C-70
A4 1/4"=1'-0"



STN
VERSE

13
A4

TYP. WALL PATIENT STN
1/4"=1'-0" 1 THUS, 1 REVERSE



89



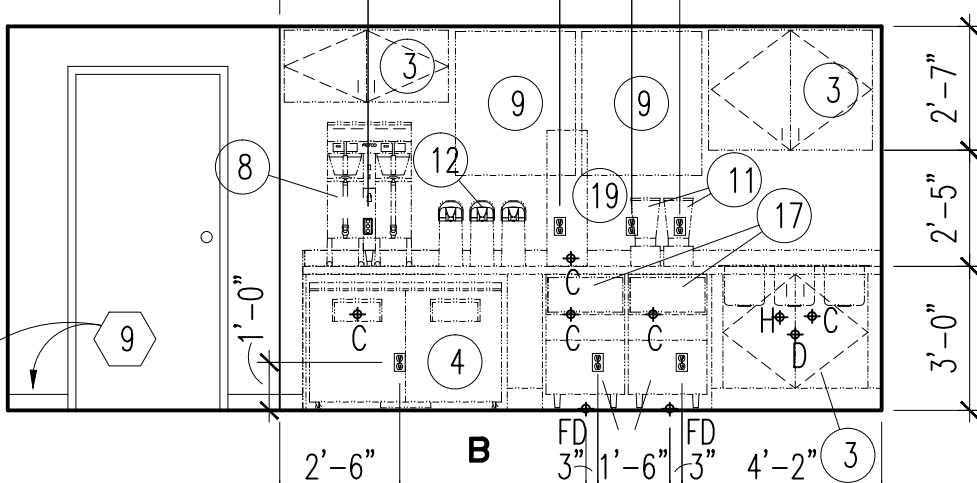
DOOR AND H.M. FRAME ELEVATIONS



WINDOW ELEVATION
1/8"=1'-0"



11 ONCOLOGY - 1C-70
A4 1/4"=1'-0"



16
A4

PREP AREA - 1C-85A
1/4"=1'-0"

NOTE: PROVIDE BACKING AS REQUIRED FOR ALL WALL MOUNTED ITEMS.

- | | | | |
|--|-------------------------------------|--------------------------------------|--------------------------------------|
| 1 PLASTIC LAMINATE BASE UNIT (CC) | 10 SHARPS BIN (VC) | 19 GRAB BAR. SIZE AS INDICATED. (CC) | 28 COFFEE MAKER (VV) |
| 2 PLASTIC LAMINATE WALL UNIT (CC) | 11 PLASTIC LAMINATE CHART DESK (CC) | 20 TOILET PAPER DISPENSER (CC) | 29 WASTE RECEPTACLE (VV) |
| 3 PLASTIC LAMINATE COUNTERTOP (CC) | 12 SINK (CC) SEE MECH | 21 SANITARY WASTE RECEPTACLE (CC) | 30 LINEN HAMPER (VV) |
| 4 SOAP DISPENSER (VC) | 13 MIRROR (CC) | 22 TELEVISION (VV) | 31 DOME STOP (CC) |
| 5 TOWEL DISPENSER (CC) | 14 REFRIGERATOR (CC) | 23 OMNICELL (VV) | 32 PLASTIC LAMINATE SHELF UNIT (CC) |
| 6 WASTE RECEPTACLE (VV) | 15 STEEL SUPPORT BRACKET (CC) | 24 FAX (VV) | 33 FIN TUBE RADIATION (CC) SEE MECH. |
| 7 LAVATORY (CC) SEE MECH. | 16 TACKBOARD (CC) | 25 PRINTER (VV) | 34 MODULAR WORKSURFACE & BRACKET |
| 8 LIGHT FIXTURE (CC) SEE ELEC. | 17 CERAMIC WALL TILE. | 26 SCALE (VV) | |
| 9 BASE - SEE ROOM FINISH SCHEDULE (CC) | 18 WATER CLOSET (CC) SEE MECH. | 27 ICE MACHINE (CC) | |

	FLOOR			BASE			WALLS			CEILING			REMARKS		
	S.V.T.	SHEET VINYL	CERAMIC TILE EXISTING	VINYL	SHEET VINYL	CERAMIC TILE EXISTING	PAINT	GLAZED COATING	VINYL WALLCOVERING	CERAMIC TILE	EXISTING	A.C.T. A		A.C.T. B	EXISTING
ADVOCATE															<div> <div></div> <div></div> </div> NEW FINISH <div> <div></div> <div></div> </div> EXISTING FINISH REMAINS; PATCH TO MATCH WHERE REQ'D DUE TO DEMOLITION OR NEW CONSTRUCTION NATURAL BREAK (CORNER) TO NATURAL BREAK (CORNER)
OFFICE															
GY															HOLD DOWN CLIPS AT A.T. CEILING
UTILITY															
WIRE															HOLD DOWN CLIPS AT A.T. CEILING
STORAGE															
RENEW															
EA															
THEVET															SEE COLOR LOCATION DIAGRAM SEE COLOR LOCATION DIAGRAM
R															SEE COLOR LOCATION DIAGRAM
R															SEE COLOR LOCATION DIAGRAM
R															SEE COLOR LOCATION DIAGRAM
R															SEE COLOR LOCATION DIAGRAM
R															SEE COLOR LOCATION DIAGRAM
E															SEE COLOR LOCATION DIAGRAM

NOTE: PAINT ALL EXISTING H.M. FRAMES IN AREAS TO BE REMODELED. (DELETE AT APPLICABLE AREAS UNDER ALTERNATE BID NO. 1)

① NEW FINISH DELETED UNDER ALTERNATE BID NO. 1



18 WALL SECTION
A4 3/4"=1'-0"



19 WALL SECTION
A4 3/4"-1'-0"

CC = VAMC CONTRACTOR SUPPLY AND INSTALL KC = CANTEEN SUPPLY AND KK = CANTEEN SUPPLY AND CANTEEN INSTALL

- | VAMC CONTRACTOR INSTALL | | |
|---|------------------------------------|--------------------------------------|
| ② COUNTER UNIT W/ GATE & STORAGE DOORS (KC) | ⑩ TRASH CAN (KK) | ⑰ ICE MAKER (2 THUS) (KC) |
| ③ BACKBAR COUNTER UNIT W/ SINK (KC) | ⑪ BLENDER (KC) | ⑱ PENDANT LIGHTS (KC) |
| ④ UNDERCOUNTER REFRIGERATOR (KC) | ⑫ AIR POT (6 THUS) (KK) | ⑲ ICED TEA BREWER (KC) |
| ⑤ UNDERCOUNTER REFRIGERATOR (KC) | ⑬ CONDIMENT STAND (KC) (NOT SHOWN) | 22A STORAGE SHELVES (KC) (NOT SHOWN) |
| ⑥ ESPRESSO MACHINE W/ WATER FILTER | ⑭ AIR SCREEN REFRIGERATOR (KC) | 22B STORAGE SHELVES (KC) (NOT SHOWN) |
| ⑧ COFFEE BREWER (KC) | ⑮ CASH REGISTER (KC) (NOT SHOWN) | ⑰ BAKERY DISPLAY COUNTERTOP (KC) |
| ⑨ MENU BOARD (KC) | ⑯ 24" TABLE W/ CHAIRS (KC) | |

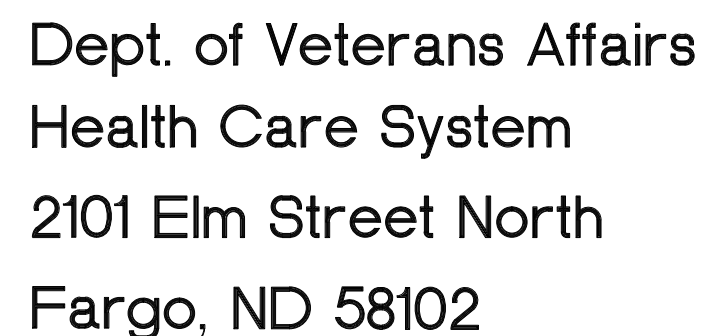


IMAGE GROUP INC., Architecture & Interiors
OBERMILLER NELSON ENGINEERING, Mechanical Engineers
MBN ENGINEERING, Electrical Engineers

I hereby certify that this plan specification, or report was prepared by me or under my direct supervision, and that I am duly Registered Architect under the laws of the State of North Dakota.

Date 5/9/2013 Reg. No. 378

Drawing Title SCHEDULES AND INTERIOR ELEVATIONS

VA Project No.
437-13-104

Building No. 1, 46

Project Title

**FARGO VA HEALTH CARE SYSTEM
RENOVATE FIRST FLOOR,
BUILDING 1**

Designed By
RM

Location **FARGO VA HEALTH CARE SYSTEM**
FARGO ND

Date
MAY 10, 2013

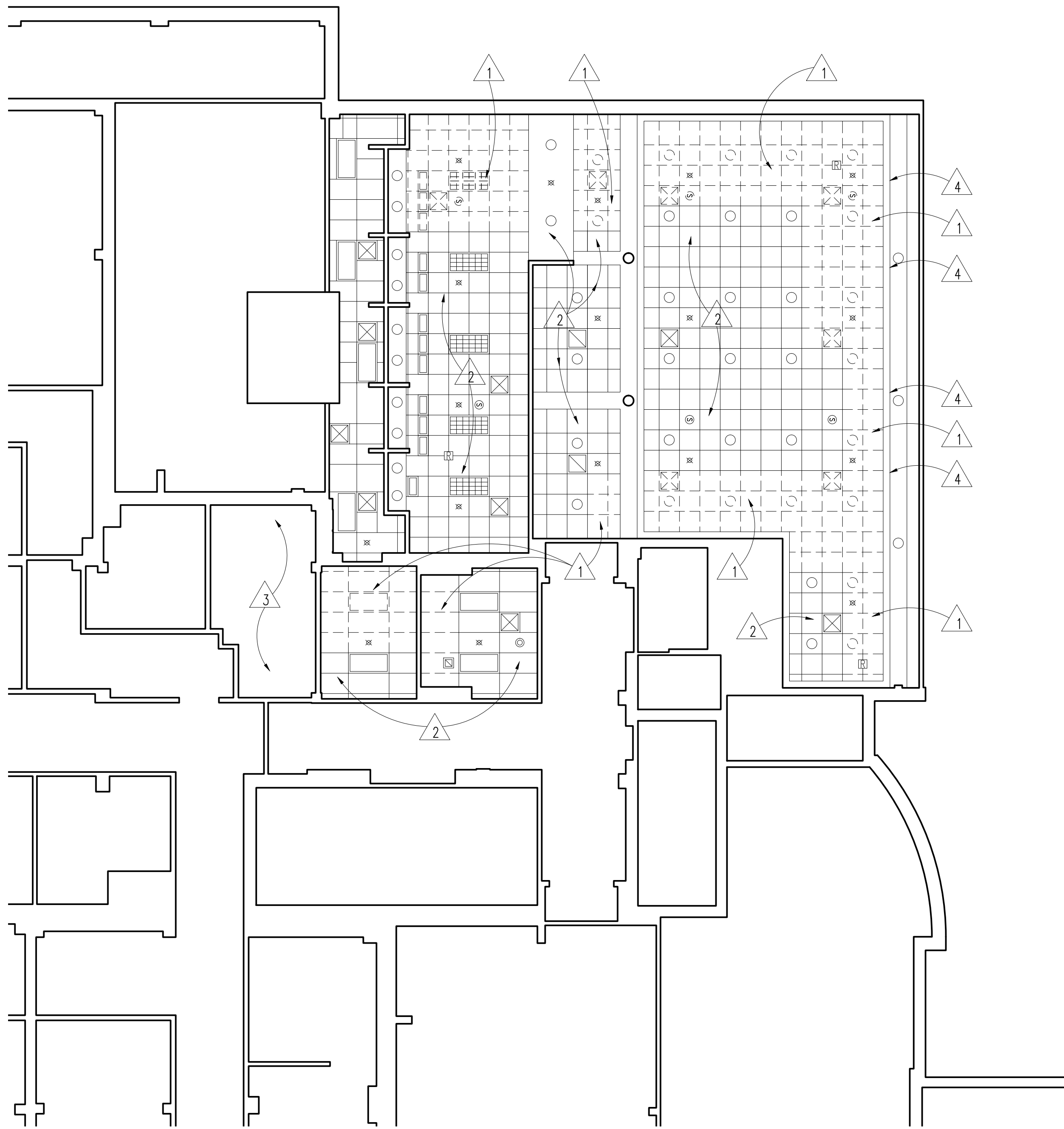
AS SHOWN

Drawing No.

A4

Dwg. 6 of 25





BASEMENT REFLECTED CEILING DEMOLITION PLAN
1/8"=1'-0"

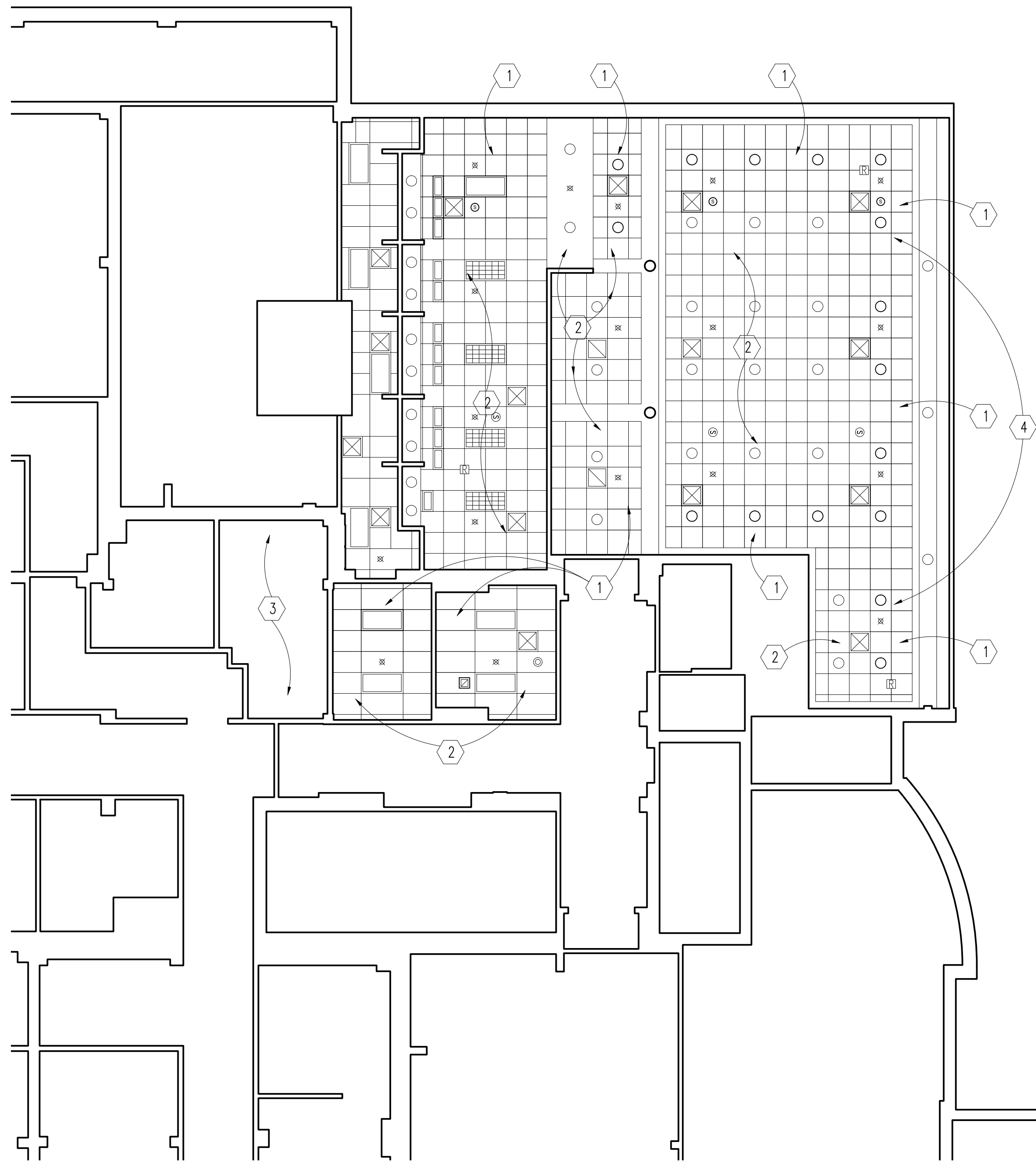


CEILING DEMOLITION NOTES LEGEND

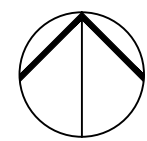
- 1 REMOVE SUSPENDED ACOUSTICAL TILE AND CEILING GRID.
- 2 EXISTING CEILING REMAINS.
- 3 VERIFY IF FINISHED CEILING EXISTS AT TIME OF CONSTRUCTION. REMOVE AND REINSTALL IF EXISTS.
- 4 MINIMIZE SOFFIT DEMOLITION REQUIRED FOR RISERS TO OXYGEN OUTLETS AT FIRST FLOOR ABOVE.

CEILING SYMBOLS LEGEND

- CEILING DEMOLITION AS INDICATED
- 2'-0" x 4'-0" CEILING GRID
- 2'-0" x 2'-0" CEILING GRID
- RECESSED FLUORESCENT LIGHT FIXTURE
- SURFACE MOUNTED FLUORESCENT LIGHT FIXTURE
- DOWN LIGHT FIXTURE
- SPRINKLER
- SMOKE OR TEMPERATURE DETECTOR
- SPEAKER
- EXIT
- SUPPLY GRILLE, CEILING DIFFUSER
- RETURN AIR GRILLE



BASEMENT REFLECTED CEILING PLAN
1/8"=1'-0"



CEILING NOTES

GENERAL:

- 1. REFER TO MECHANICAL DRAWINGS FOR RELATED MECHANICAL WORK.
- 2. REFER TO ELECTRICAL DRAWINGS FOR RELATED ELECTRICAL WORK.
- 3. CEILINGS IN SPACES OPEN TO PUBLIC MUST BE REPLACED IMMEDIATELY FOLLOWING DEMOLITION AND RELATED CONSTRUCTION.

REMODELING SYMBOLS LEGEND

- 1 NEW SUSPENDED ACOUSTICAL TILE AND GRID CEILING. TYPICAL UNLESS INDICATED OTHERWISE.
- 2 EXISTING CEILING REMAINS.
- 3 REINSTALL EXISTING CEILING (IF EXISTS).
- 4 MAIN NORTH/SOUTH OXYGEN LINE TO RUN OUTSIDE OF GWB SOFFIT AND ABOVE ACOUSTIC TILE CEILING, WITH RISERS TO REQUIRED OUTLETS AT FIRST FLOOR ABOVE RUN THROUGH SOFFIT. MINIMIZE SOFFIT DEMOLITION.

CEILING SYMBOLS LEGEND:

- 2'-0" x 4'-0" CEILING GRID
- 2'-0" x 2'-0" CEILING GRID
- RECESSED FLUORESCENT LIGHT FIXTURE
- DOWN LIGHT FIXTURE
- SPRINKLER
- SMOKE OR TEMPERATURE DETECTOR
- SPEAKER
- EXIT
- SUPPLY GRILLE, CEILING DIFFUSER
- RETURN AIR GRILLE
- WIRELESS ROUTER



Dept. of Veterans Affairs
Health Care System
2101 Elm Street North
Fargo, ND 58102

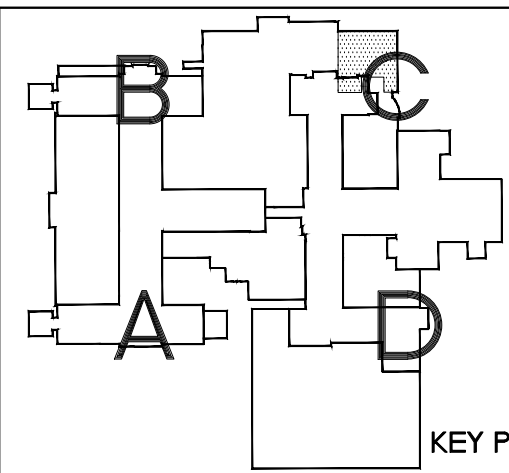


IMAGE GROUP INC.
403 CENTER AVENUE, SUITE 300
MOORHEAD, MN 56560

IMAGE GROUP INC., Architecture & Interiors
OBERMILLER NELSON ENGINEERING, Mechanical Engineers
MEN ENGINEERING, Electrical Engineers

I hereby certify that this plan specification, or report was prepared by me or under my direct supervision, and that I am duly Registered Architect under the laws of the State of North Dakota.

Date 5/9/2013 Reg. No. 378

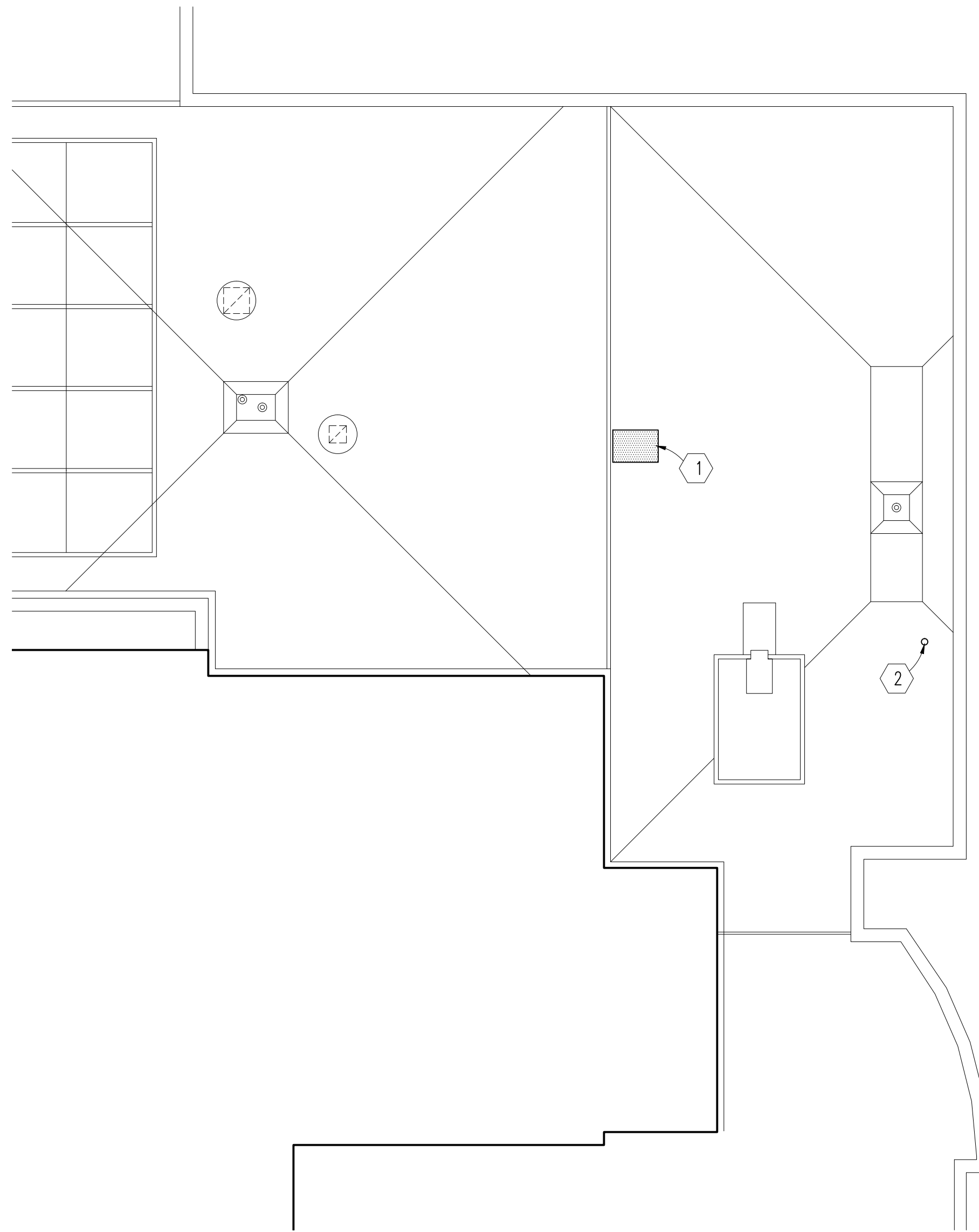


Drawing Title BASEMENT REFLECTED CEILING DEMOLITION PLAN AND REFLECTED CEILING PLAN			
VA Project No. 437-13-104	Contract No. VA263-P-1217	Designed By RM	
Building No. 1, 46	AutoCAD File Name Plan_Base_Ceil.dwg	Checked By RM	Drawn By KS

Project Title FARGO VA HEALTH CARE SYSTEM RENOVATE FIRST FLOOR, BUILDING 1			
Designed By RM	Checked By RM	Drawn By KS	Drawing No. A5
Location FARGO VA HEALTH CARE SYSTEM FARGO, ND			

Date MAY 10, 2013	1/8"=1'-0"
Dwg 7 of 25	



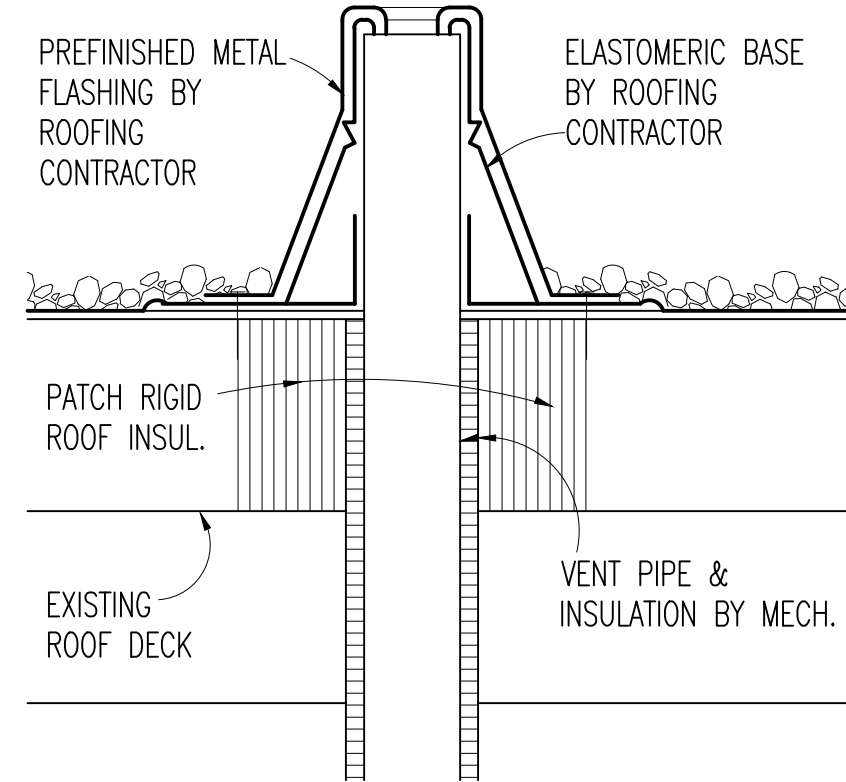


ROOF NOTES

- 1 INFILL ROOF STRUCTURE & PATCH ROOF AT REMOVED ROOF HATCH. SEE DETAIL 3/A6.
- 2 V.T.R. SEE MECH. SEE DETAIL 1/A6.

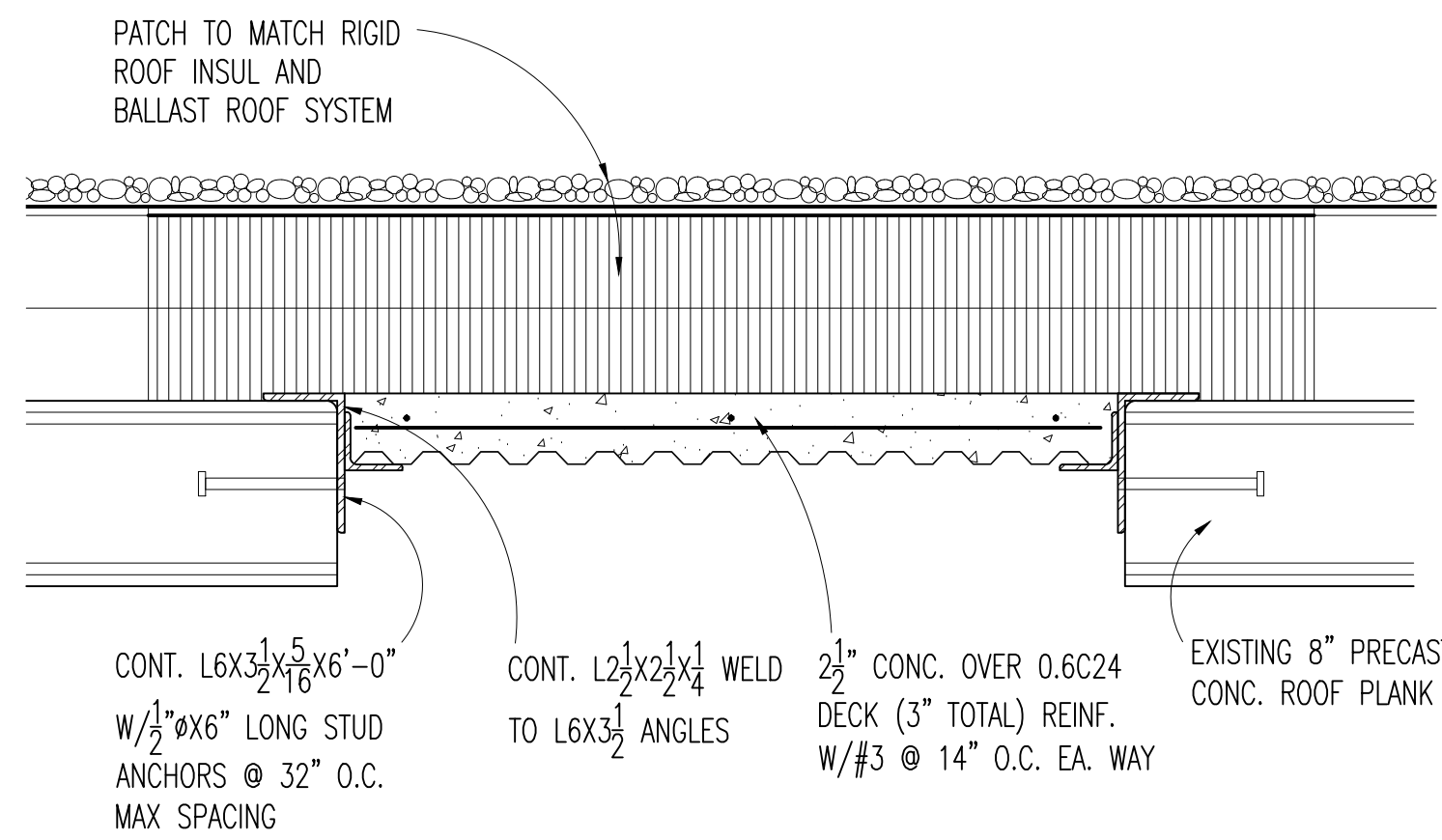
PARTIAL FIRST FLOOR ROOF PLAN

1/8"=1'-0"



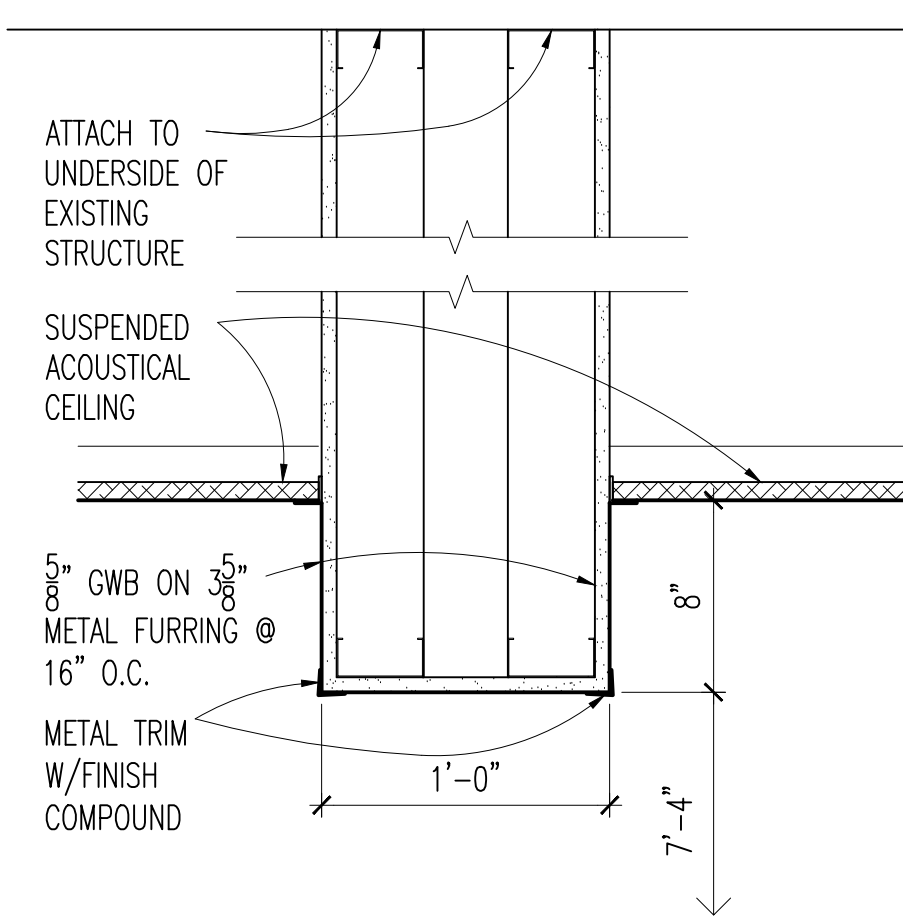
1 VTR DETAIL

A6 1 1/2"=1'-0"



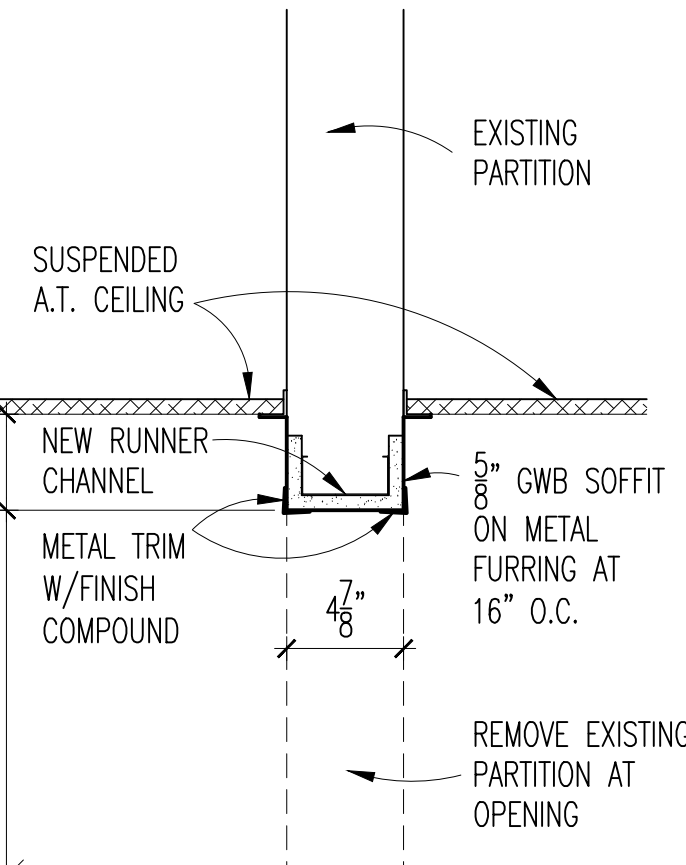
3 HATCH INFILL DETAIL

A6 1 1/2"=1'-0"



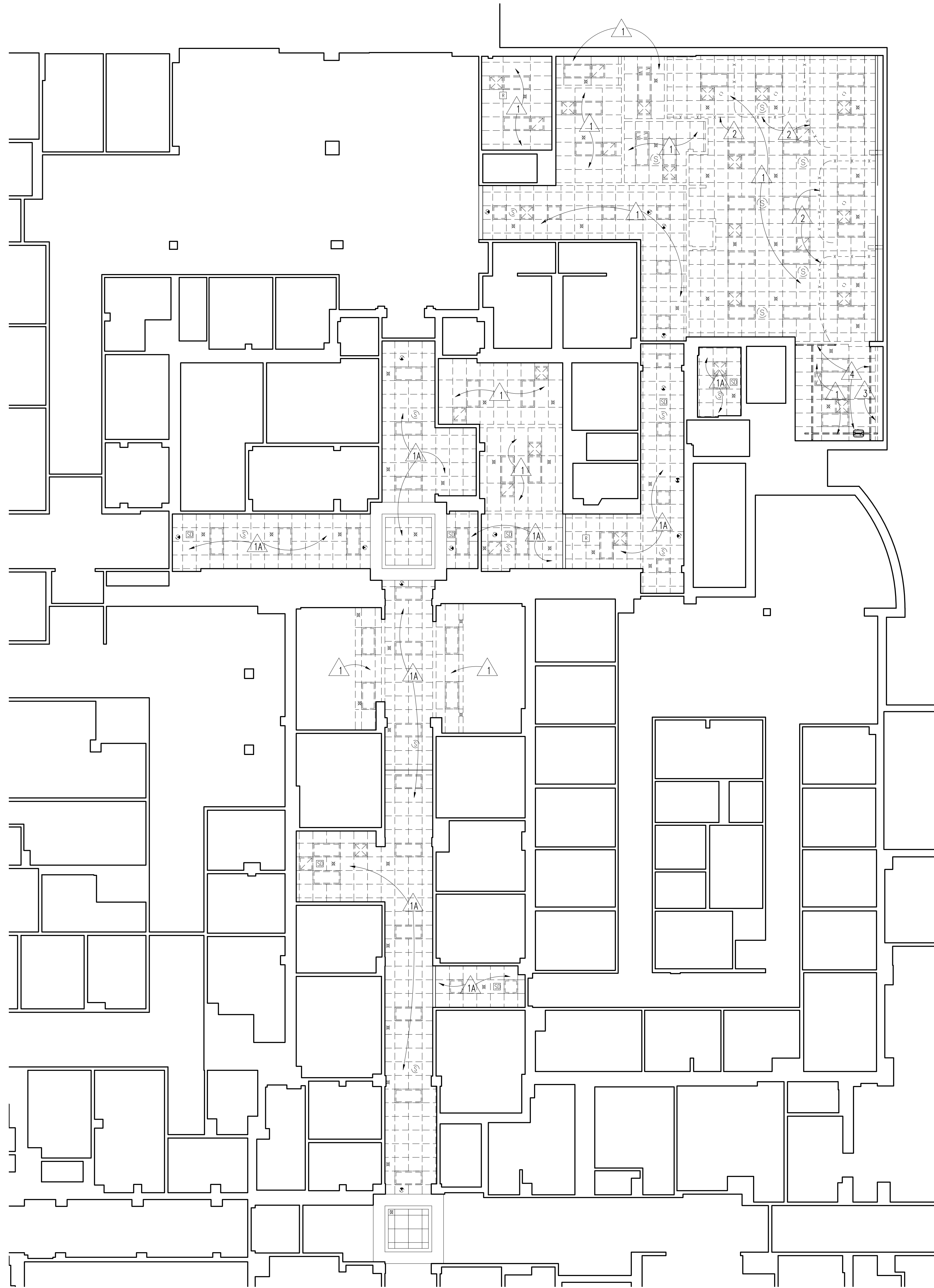
2 SOFFIT DETAIL

A6 1 1/2"=1'-0"



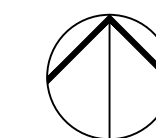
4 SOFFIT DETAIL

A6 1 1/2"=1'-0"



FIRST FLOOR REFLECTED CEILING DEMOLITION PLAN

1/8"=1'-0"



CEILING NOTES

GENERAL:

1. REFER TO MECHANICAL DRAWINGS FOR RELATED MECHANICAL DEMOLITION.
2. REFER TO ELECTRICAL DRAWINGS FOR RELATED ELECTRICAL DEMOLITION.
3. CEILINGS IN SPACES OPEN TO PUBLIC MUST BE REPLACED IMMEDIATELY FOLLOWING DEMOLITION AND RELATED CONSTRUCTION.
4. REMOVE WALLS, PARTITIONS OR FURRING AS INDICATED. SEE DEMOLITION PLAN.
5. PATCH TO MATCH SPRAY-ON FIREPROOFING DAMAGED OR REMOVED FROM STRUCTURAL MEMBERS DURING DEMOLITION AND REMODELING.

CEILING DEMOLITION NOTES LEGEND

- 1 REMOVE SUSPENDED ACOUSTICAL TILE AND CEILING GRID.
- 1A REMOVE SUSPENDED ACOUSTICAL TILE AND CEILING GRID. (DEDUCT UNDER ALTERNATE BID 1).
- 2 REMOVE CUBICLE CURTAIN TRACK.
- 3 REMOVE SOFFIT SYSTEM.
- 4 REMOVE EXISTING WALL-MOUNTED PATIENT LIFT; SALVAGE FOR REINSTALLATION.

CEILING SYMBOLS LEGEND

- CEILING DEMOLITION AS INDICATED
- 2'-0" x 4'-0" CEILING GRID
- 2'-0" x 2'-0" CEILING GRID
- RECESSED FLUORESCENT LIGHT FIXTURE
- DOWN LIGHT FIXTURE
- SPRINKLER
- SPEAKER
- SMOKE DETECTOR
- WIRELESS ROUTER
- EXIT
- SUPPLY GRILLE, CEILING DIFFUSER
- RETURN AIR GRILLE
- NURSE CALL LIGHT



Dept. of Veterans Affairs
Health Care System
2101 Elm Street North
Fargo, ND 58102

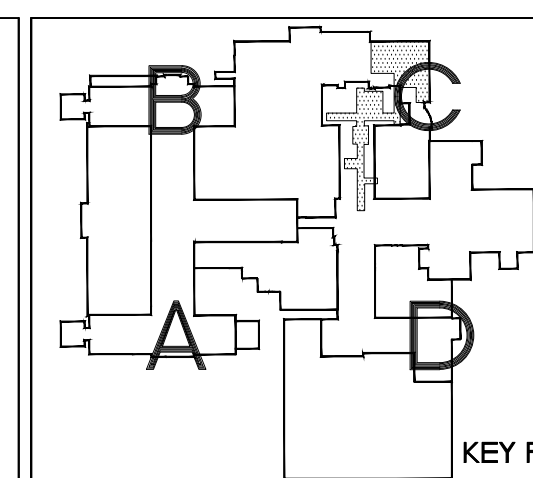


IMAGE GROUP INC.
403 CENTER AVENUE, SUITE 300
MOORHEAD, MN 56560

IMAGE GROUP INC., Architecture & Interiors
OBERMILLER NELSON ENGINEERING, Mechanical Engineers
MEN ENGINEERING, Electrical Engineers

I hereby certify that this plan specification, or report was prepared by me or under my direct supervision, and that I am duly Registered Architect under the laws of the State of North Dakota.

Date 5/9/2013 Reg. No. 378



Drawing Title
**FIRST FLOOR REFLECTED
CEILING DEMOLITION PLAN
AND ROOF PLAN**

VA Project No.
437-13-104

Building No.
1, 46

Contract No.
**VA263-P-1217
VA263-C-**

AutoCAD File Name
Plan_First_Demo.dwg

Project Title
**FARGO VA HEALTH CARE SYSTEM
RENOVATE FIRST FLOOR,
BUILDING 1**

Designed By
RM

Location
**FARGO VA HEALTH CARE SYSTEM
FARGO, ND**

Checked By
RM

Drawn By
KS

Drawing No.
A6

Dwg 8 of 25

Date
MAY 10, 2013

Scale
1/8"=1'-0"

Department of
Veterans Affairs



