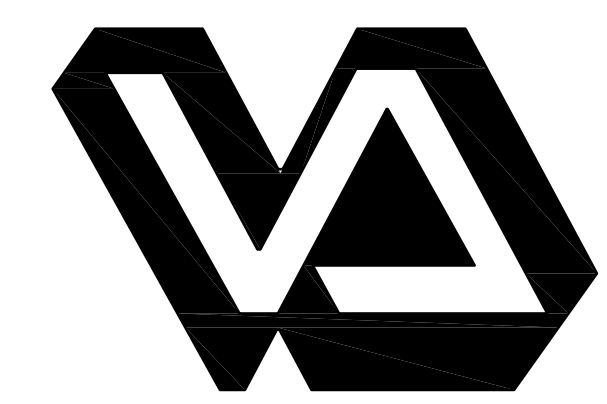


- GENERAL NOTES:**
1. WORK ON THIS PROJECT IS TO BE COMPLETED IN PHASES. SEE SHEET X2 FOR PHASING PLANS AND DETAILS.
 2. ALL EQUIPMENT, DEVICES, FIXTURES, ET. SHOWN ON THE DEMOLITION PLANS SHALL BE REMOVED UNLESS NOTED OTHERWISE.
- PLAN NOTES:**
- 1) DISCONNECT POWER, PHONE AND DATA CONNECTIONS FROM AUDIO BOOTH.
 - 2) PAGING AMPLIFIER TO BE RELOCATED WITHIN ROOM, SEE SHEET E5 FOR LOCATION.
 - 3) DISCONNECT WIRELESS ACCESS ROUTER, SALVAGE FOR REINSTALLATION WHERE SHOWN ON SHEET E5.
 - 4) DISCONNECT DURESS PANEL AND SALVAGE FOR REINSTALLATION IN NEW POLICE OFFICE.
 - 5) DISCONNECT MED GAS ALARM PANEL. PANEL TO BE REINSTALLED, SEE SHEET E4.
 - 6) PANEL, FIXTURE OR DEVICE TO REMAIN.
 - 7) ALL ITEMS WITHIN BOUNDARY ARE TO REMAIN, UNLESS NOTED OTHERWISE.
 - 8) REMOVE RECEPTACLES AND CONDUCTORS BACK TO SOURCE OF SUPPLY. PROVIDE BLANK COVER PLATE.
 - 9) DISCONNECT SALVAGE EXISTING FIRE ALARM DEVICE, SALVAGE FOR REINSTALLATION WHERE SHOWN ON SHEET E5.
 - 10) DISCONNECT EXISTING PATIENT LIFT.
 - 11) DELETE WORK WITHIN BOUNDARY UNDER DEDUCT ALTERNATE BID 1.
 - 12) DISCONNECT AND REMOVE EXISTING PAGING SPEAKER, SALVAGE FOR REINSTALLATION WHERE SHOWN ON SHEET E5.
 - 13) DISCONNECT AND REMOVE EXISTING LIGHT FIXTURE, SALVAGE FOR REINSTALLATION WHERE SHOWN ON SHEET E3.
 - 14) DISCONNECT AND REMOVE EXISTING EXIT LIGHT, SALVAGE FOR REINSTALLATION WHERE SHOWN ON SHEET E3.
 - 15) DISCONNECT AND REMOVE EXISTING NURSE CALL DEVICE, SALVAGE FOR REINSTALLATION WHERE SHOWN ON SHEET E5.
 - 16) DISCONNECT AND REMOVE EXISTING NURSE CALL MASTER STATION, SALVAGE FOR REINSTALLATION WHERE SHOWN ON SHEET E5.
 - 17) REMOVE EXISTING FLOOR BOX, PATCH FLOOR.
 - 18) DISCONNECT EXISTING HANDHELD BOMA DEVICES, TURN DEVICES OVER TO OWNER.
 - 19) DISCONNECT POWER TO EXISTING PATIENT LIFT, SALVAGE FOR REINSTALLATION.

REFER TO SHEET A5 FOR SCOPE OF WORK IN BASEMENT BELOW ONCOLOGY SUITE. WORK INVOLVES REMOVAL AND REPLACEMENT OF ALL CEILING MOUNTED ELECTRICAL FIXTURES AND DEVICES IN NOTED AREA. SEE CEILING SYMBOLS LEGEND ON SHEET A5 FOR IDENTIFIED ITEMS.

1 E2 FIRST FLOOR DEMOLITION PLAN - ELECTRICAL

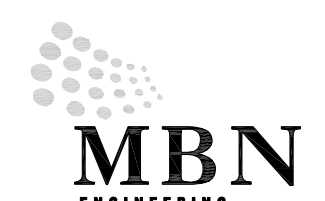


Dept. of Veterans Affairs
Medical Center
2101 Elm Street North
Fargo, ND 58102

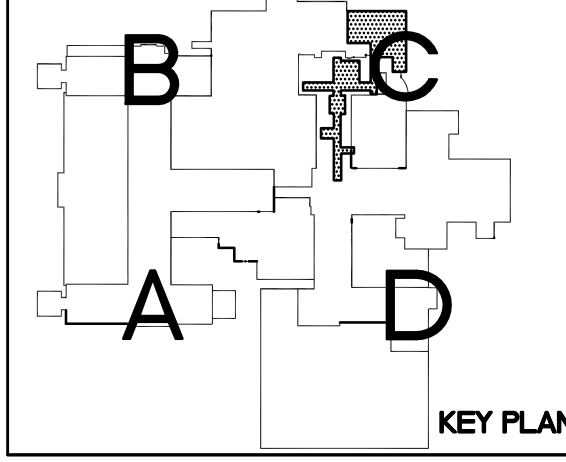


IMAGE GROUP INC.
403 CENTER AVENUE, SUITE 300
MOOREHEAD, MN 56560

IMAGE GROUP INC., Architecture & Interiors
OBERMILLER NELSON ENGINEERING, Mechanical Engineers
MBN ENGINEERING, Electrical Engineers




MECHANICAL * ELECTRICAL * CIVIL
903 7th St N, Suite 200
FARGO, ND 58102
PHONE: 701-478-6333
FAX: 701-478-6340



Drawing Title FIRST FLOOR DEMOLITION PLAN - ELECTRICAL		Project Title FARGO VA HEALTH CARE SYSTEM RENOVATE FIRST FLOOR, BUILDING 1			Date MAY 10, 2013		
VA Project No. 437-13-104		Contract No. VA263-P-1217 VA263-C-		Designed By MB	Checked By MB	Drawn By TP	AS NOTED
Building No. 1, 46		AutoCAD File Name 13-061 E2.dwg		Location FARGO VA HEALTH CARE SYSTEM FARGO, ND			Drawing No. E2
							Dwg. 21 of 25

Department of
Veterans Affairs



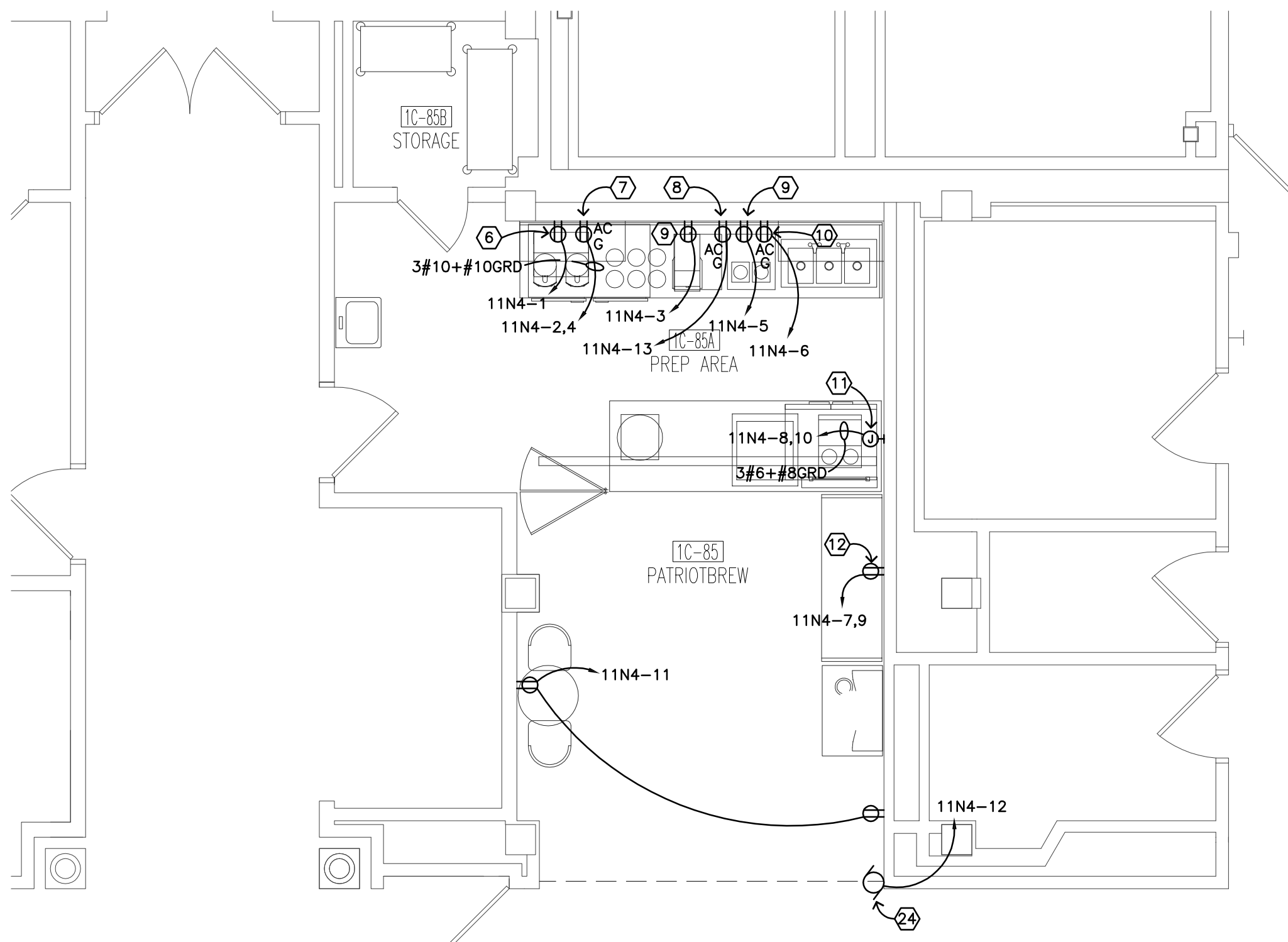


\\projects\2013\13-061\Drawings\13-061 E2.dwg May 10, 2013 - 10:05am

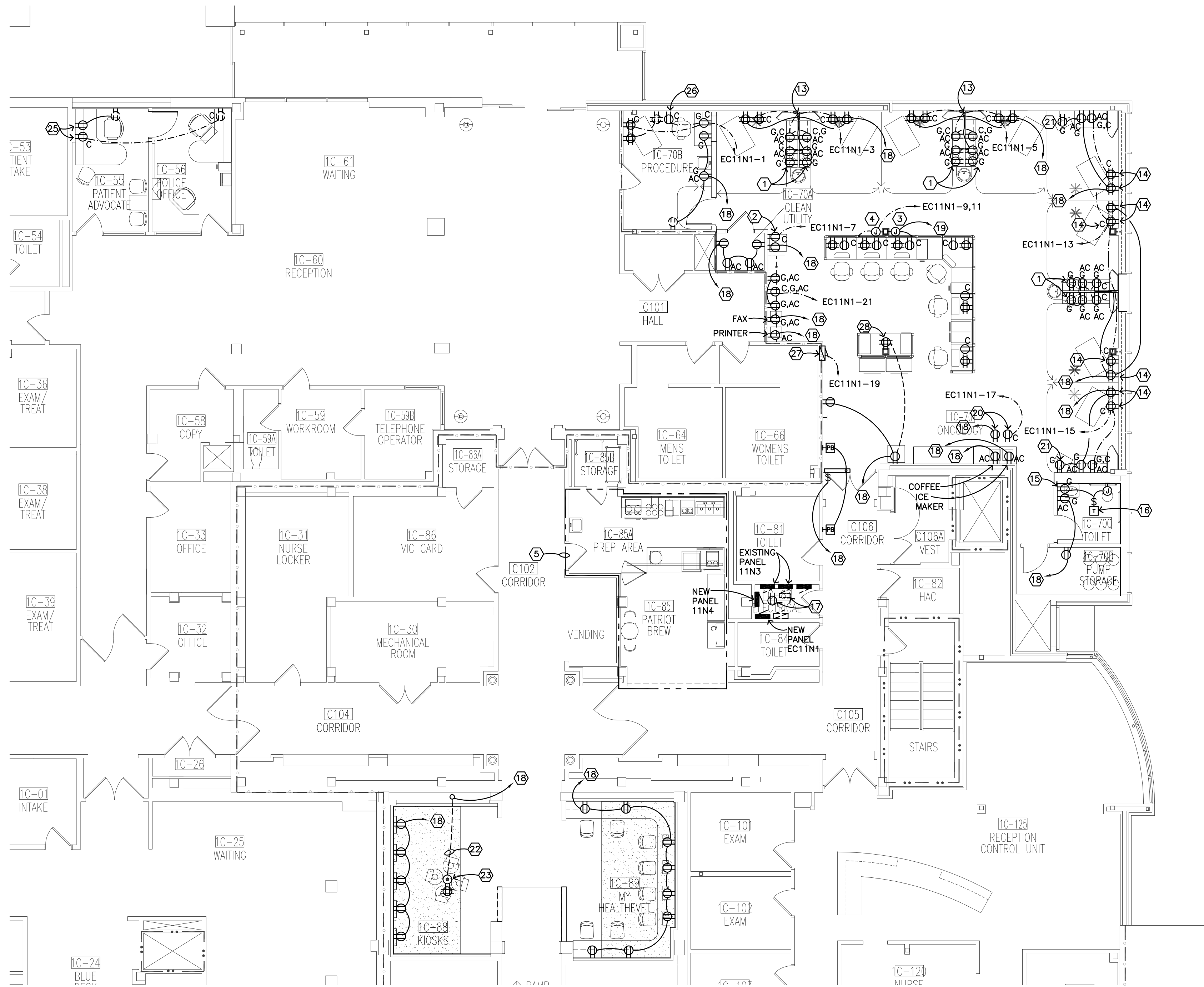
PANELBOARD LOAD SCHEDULE																		
PANEL: EC11N1			MAIN: MLO			ENCLOSURE: NEMA 1			LOCATION: 1C-83									
RATING: 100 AMP			AIC RATING: 10,000			MOUNTING: SURFACE			FED FROM: BLDG 1 SWBD									
CKT #	TRIP AMP	POLE	LIGHTING	LOAD RECPY	IN VOLT-AMPERES MOTORS	KITCHEN	HEAT/AC	LOAD DESCRIPTION	PH	LOAD DESCRIPTION	HEAT/AC	LOAD IN VOLT-AMPERES KITCHEN	IN VOLT-AMPERES MOTORS	RECPY	LIGHTING	TRIP AMPS	POLE	CKT #
1	20	1		400				1C-70B	A	SPARE						20	1	2
3	20	1		1200				1C-70	B	SPARE						20	1	4
5	20	1			500			1C-70 OMNICELL	C	SPARE						20	1	6
7	20	1						1C-70	A	SPARE						20	1	8
9	20	1		1200				1C-70 NURSE STAT	B	SPARE						20	1	10
11	20	1		1200				1C-70 NURSE STAT	C	SPARE						20	1	12
13	20	1		1200				1C-70	A	SPARE						20	1	14
15	20	1		400				1C-70	B	SPARE						20	1	16
17	20	1			500			1C-70 REF	C	SPARE						20	1	18
19	20	1			500			1C-70 MED GAS PNL	A	SPARE						20	1	20
21	20	1		200				1C-70	B	SPARE						20	1	22
23	20	1						SPARE	C	SPARE						20	1	24
25	20	1						SPARE	A	SPARE						20	1	26
27	20	1						SPARE	B	SPARE						20	1	28
29	20	1						SPARE	C	SPARE						20	1	30
31	20	1						SPARE	A	SPARE						20	1	32
33	20	1						SPARE	B	SPARE						20	1	34
35	20	1						SPARE	C	SPARE						20	1	36
37	20	1						SPARE	A	SPARE						20	1	38
39	20	1						SPARE	B	SPARE						20	1	40
41	20	1						SPARE	C	SPARE						20	1	42

LOAD CALCULATIONS										NOTES:
LOAD TYPE		VA / PHASE			TOTAL VA	DEMAND FACTOR	DIVERSIFIED LOAD			
LIGHTING	A	B	C			0	1.00			
RECEPTACLES	1600	3000	1200		5800	0.50	2900			
MOTORS & EQUIP	500	0	1000		1500	0.80	1350			
KITCHEN EQUIP.	0	0	0	0	0	0.65	0			
HEAT / AC	0	0	0	0	0	0.90	0			
TOTAL AMPS:		12		TOTAL VA:		4250				

PANELBOARD LOAD SCHEDULE																	
PANEL: 11N4			MAIN: MLO			ENCLOSURE: NEMA 1			LOCATION: 1C-83								
RATING: 100 AMP			AIC RATING: 10,000			MOUNTING: SURFACE			FED FROM: BLDG 1 SWBD								
CKT #	TRIP	POLE	LOAD IN VOLT-AMPERES				LOAD DESCRIPTION	PH	LOAD DESCRIPTION	HEAT/AC	LOAD IN VOLT-AMPERES				TRIP	POLE	CKT #
			LIGHTING	RECP	MOTORS	KITCHEN	HEAT/AC				KITCHEN	MOTORS	RECP	LIGHTING	AMPS		
1	20*	1			600			1C-85A REF	A	1C-85A COFFEE	2400				30		2
3	20*	1			650			1C-85A ICE MAKER	B		2400				2		4
5	20*	1			650			1C-85A ICE MAKER	C	1C-85A BLENDER	1560				2		6
7	20				1350			1C-85 REF	A	1C-85A					60		8
9	20	2			1350				B	COUNTER					2		10
11	20	1			400			1C-85A	C	MOTORIZED GATE	1800				2		12
13	20	1			1800			ICE TEA BREWER	A	SPARE					20		14
15	20	1						SPARE	B	SPARE					20		16
17	20	1						SPARE	C	SPARE					20		18
19	20	1						SPARE	A	SPARE					20		20
21	20	1						SPARE	B	SPARE					20		22
23	20	1						SPARE	C	SPARE					20		24
25	20	1						SPARE	A	SPARE					20		26
27	20	1						SPARE	B	SPARE					20		28
29	20	1						SPARE	C	SPARE					20		30
31	20	1						SPARE	A	SPARE					20		32
33	20	1						SPARE	B	SPARE					20		34
35	20	1						SPARE	C	SPARE					20		36
37	20	1						SPARE	A	SPARE					20		38
39	20	1						SPARE	B	SPARE					20		40
41	20	1						SPARE	C	SPARE					20		42
LOAD CALCULATIONS																	
LOAD TYPE		VA / PHASE			TOTAL VA		DEMAND FACTOR		DIVERSIFIED LOAD		NOTES:						
		A	B	C							1. BREAKER NOTED WITH "*" TO BE GFCI						
LIGHTING		0	0	0	0	0	1.00	0									
RECEPTACLES		1800	0	0	400	2200	0.50	1100									
MOTORS & EQUIP.		6630			6680	2450	15760	0.90	14184								
KITCHEN EQUIP.		2400	2400		1560	6360	0.65	4134									
HEAT / AC		0	0	0	0	0	0.90	0									
TOTAL AMPS:		54			TOTAL VA:		19418										



2 E4 LARGE SCALE PREP AREA PLAN - POWER



1 E4 FIRST FLOOR REMODELING PLAN - POWER

- GENERAL NOTES:
1. WORK ON THIS PROJECT IS TO BE COMPLETED IN PHASES. SEE SHEET X2 FOR PHASING PLANS AND DETAILS.
 2. PATRIOTBREW 1C-85 AND PREP AREA 1C-85A IS BUILT ON A DOUBLE FLOOR. THE CONTRACTOR MUST DRILL THROUGH BOTH FLOORS IF ANY EQUIPMENT OR DEVICE IS TO BE MOUNTED FROM BELOW. SEE ARCHITECTURAL PLANS AND DETAILS FOR EXACT LOCATIONS AND FLOOR DETAILS.
- PLAN NOTES:
1. PROVIDE RECEPTACLE FOR OWNER PROVIDED TELEVISION MOUNTED IN CABINET. VERIFY LOCATION AND MOUNTING HEIGHT WITH VA PROJECT ENGINEER PRIOR TO ROUGH-IN.
 2. PROVIDE 120V NORMAL POWER AND CRITICAL POWER CONNECTION TO OMNICELL.
 3. PROVIDE FLEXIBLE CONNECTION (LIQUIDTITE FLEX) TO MODULAR FURNITURE FOR NORMAL POWER.
 4. PROVIDE FLEXIBLE CONNECTION (LIQUIDTITE FLEX) TO MODULAR FURNITURE FOR CRITICAL POWER.
 5. SEE 2/E4 FOR LARGE SCALE PLAN.
 6. PROVIDE RECEPTACLE FOR UNDER COUNTER REFRIGERATOR.
 7. PROVIDE RECEPTACLE AND 208 VOLT CONNECTION TO COFFEE BREWER.
 8. PROVIDE RECEPTACLE FOR ICE TEA BREWER.
 9. PROVIDE RECEPTACLE FOR UNDER COUNTER ICE MAKER.
 10. PROVIDE RECEPTACLE FOR BLENDER.
 11. PROVIDE 208 VOLT SINGLE PHASE CONNECTION TO FABRICATED COUNTER. COUNTER INCLUDES RECEPTACLES FOR UNDER COUNTER REFRIGERATOR, ESPRESSO MACHINE AND CASH REGISTER.
 12. PROVIDE 208 VOLT SINGLE PHASE CONNECTION TO AIR SCREEN REFRIGERATOR. PROVIDE NEMA 6-20 RECEPTACLE.
 13. STUB CONDUIT DOWN WALL FROM CEILING TO FEED RECEPTACLES IN PATIENT STATION(S).
 14. MOUNT ALL RECEPTACLES ALONG WALL BETWEEN FIN TUBE RADIATION AND WINDOW SILL. VERIFY MOUNTING HEIGHT WITH VA PROJECT ENGINEER PRIOR TO ROUGH-IN. SEE ARCHITECTURAL ELEVATION 11/A4.
 15. PROVIDE GFCI RECEPTACLE BELOW THE SINK FOR A PLUG IN POWER SUPPLY FOR THE LAVATORY HAND WASH SENSOR.
 16. PROVIDE CONDUIT CONNECTION FROM TRANSFORMER(S) BY MECHANICAL CONTRACTOR TO PLUMBING SENSOR JUNCTION BOXES. MOUNT TRANSFORMERS ABOVE CEILING.
 17. MOUNT RECEPTACLE FOR PAGING AMPLIFIER IN CLEAR SPACE ABOVE PANEL 11N3. PROVIDE MOUNTING BRACKET AND MOUNT PAGING AMPLIFIER NEAR RECEPTACLE.
 18. CIRCUIT TO (1) 20/1 BREAKER IN EXISTING PANEL 11N3. PROVIDE NEW BREAKER AS REQUIRED.
 19. CIRCUIT TO (2) 20/1 BREAKERS IN EXISTING PANEL 11N3. PROVIDE NEW BREAKER AS REQUIRED.
 20. MOUNT RECEPTACLE UNDER COUNTER FOR OWNER PROVIDED REFRIGERATOR. PROVIDE BOTH NORMAL AND CRITICAL DEDICATED CIRCUITS.
 21. PROVIDE RECEPTACLE FOR OWNER PROVIDED TELEVISION. VERIFY LOCATION WITH VA PROJECT ENGINEER PRIOR TO ROUGH-IN.
 22. INSTALL CONDUIT RUN FROM FLOOR BOX TO WALL PRIOR TO FLOOR BEING IN-FILLED. COORDINATE INSTALLATION WITH GENERAL CONTRACTOR.
 23. PROVIDE AND INSTALL WALKER RFB4 FLOOR BOX. INSTALL FLOOR BOX PRIOR TO FLOOR BEING IN-FILLED. COORDINATE INSTALLATION WITH GENERAL CONTRACTOR.
 24. PROVIDE 120 VOLT CONNECTION TO MOTORIZED GATE. CIRCUIT AS SHOWN. INSTALL CONTROL DEVICE FURNISHED WITH GATE.
 25. PROVIDE NEW RECEPTACLE. CONNECT TO EXISTING CIRCUIT AS SHOWN.
 26. PROVIDE RECEPTACLE FOR PATIENT LIFT. VERIFY HEIGHT AND LOCATION WITH VA PROJECT ENGINEER.
 27. PROVIDE 120 VOLT CONNECTION TO MEDICAL GAS ALARM PANEL. CIRCUIT AS SHOWN.
 28. MOUNT RECEPTACLE ON COLUMN BELOW COUNTER.



Dept. of Veterans Affairs
Medical Center
2101 Elm Street North
Fargo, ND 58102

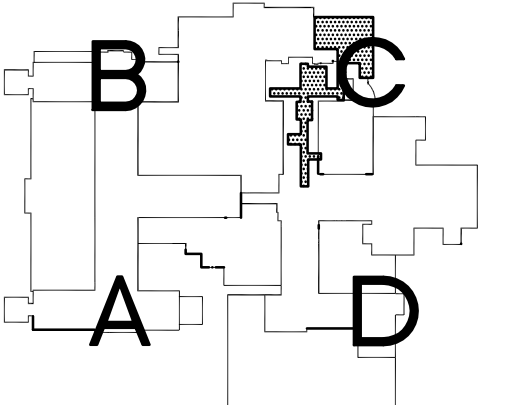


IMAGE GROUP INC.
403 CENTER AVENUE, SUITE 300
MOORHEAD, MN 56560

IMAGE GROUP INC., Architecture & Interiors
OBERMILLER NELSON ENGINEERING, Mechanical Engineers
MBN ENGINEERING, Electrical Engineers



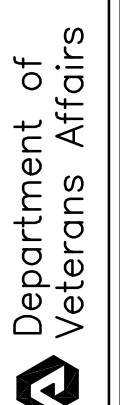
MECHANICAL - ELECTRICAL - CIVIL
923 7TH N.W., SUITE 200
FARGO, ND 58102
PHONE: 701-474-6338
FAX: 701-474-6340



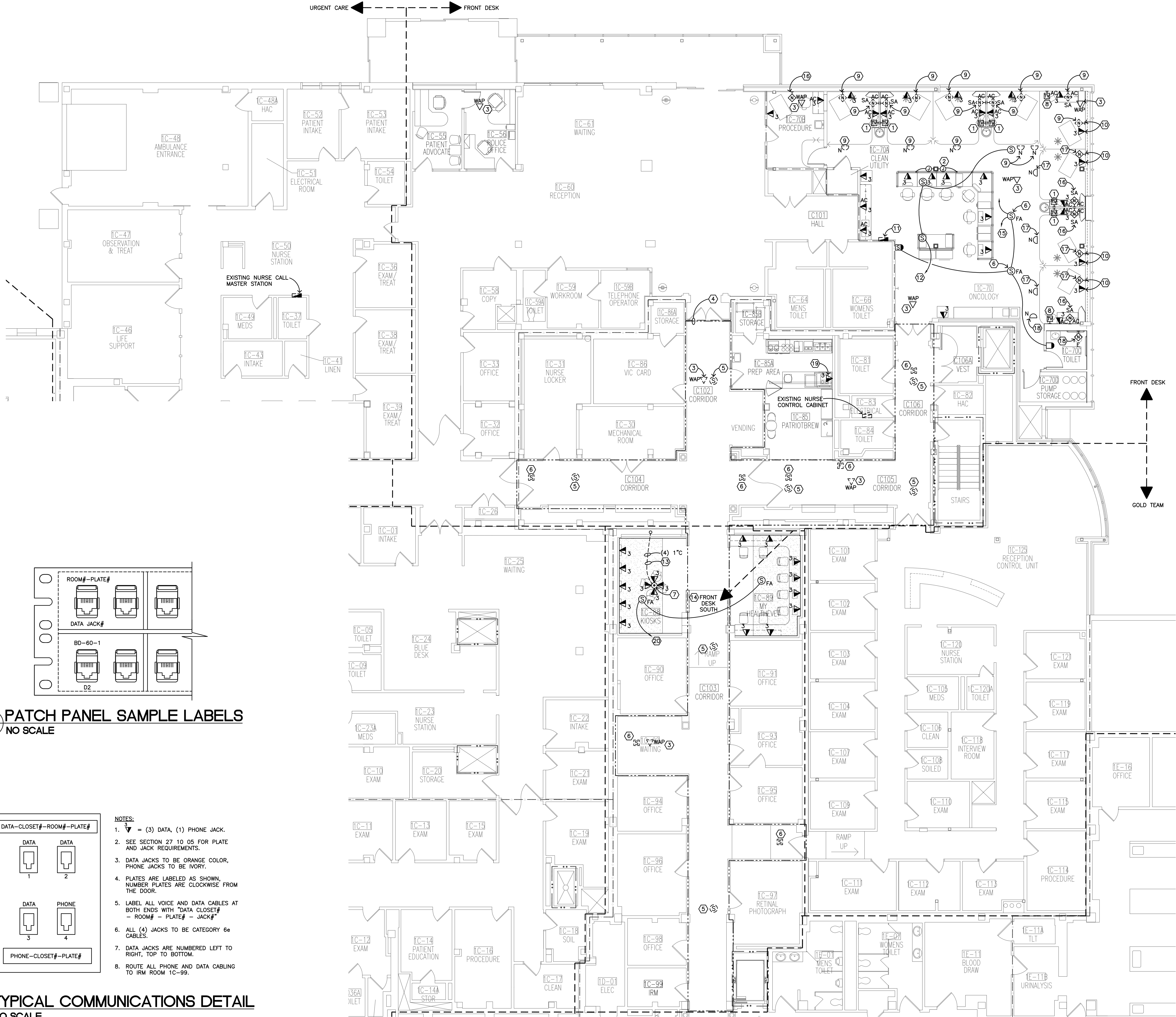
Drawing Title FIRST FLOOR REMODELING PLAN - POWER	
VA Project No. 437-13-104	Contract No. VA263-P-1217 VA263-C-
Building No. 1, 46	AutoCAD File Name 13-061 E4.dwg

Project Title FARGO VA HEALTH CARE SYSTEM RENOVATE FIRST FLOOR, BUILDING 1		
Designed By MB	Checked By MB	Drawn By TP
Location FARGO VA HEALTH CARE SYSTEM FARGO, ND		

Date MAY 10, 2013
AS NOTED
Drawing No. E4
Dwg. 23 of 25



\\projects\2013\13-1061\Drawings\13-1061 E5.dwg May 10, 2013 1:10:07am



- GENERAL NOTES:**
1. WORK ON THIS PROJECT IS TO BE COMPLETED IN PHASES. SEE SHEET X2 FOR PHASING PLANS AND DETAILS.
 2. STARBUCKS 1C-85 AND PREP AREA 1C-85A IS BUILT ON A DOUBLE FLOOR. THE CONTRACTOR MUST DRILL THROUGH BOTH FLOORS IF ANY EQUIPMENT OR DEVICE IS TO BE MOUNTED FROM BELOW. SEE ARCHITECTURAL PLANS AND DETAILS FOR EXACT LOCATIONS AND FLOOR DETAILS.
 3. ROUTE ALL PHONE AND DATA CABLEING TO IRM ROOM 1C-99.
- PLAN NOTES:**
1. PROVIDE RECEPTACLE FOR OWNER PROVIDED TELEVISION MOUNTED IN CABINET. VERIFY LOCATION AND MOUNTING HEIGHT WITH VA PROJECT ENGINEER PRIOR TO ROUGH-IN. CONNECT TO EXISTING HOSPITAL TELEVISION DISTRIBUTION SYSTEM.
 2. PROVIDE CONNECTION TO MODULAR FURNITURE.
 3. INSTALL WIRELESS ACCESS ROUTER SALVAGED DURING DEMOLITION. VERIFY LOCATION WITH VA PROJECT ENGINEER.
 4. DELETE WORK WITHIN BOUNDARY UNDER DEDUCT ALTERNATE BID 1.
 5. INSTALL SALVAGED PAGING SPEAKER, CONNECT TO EXISTING CIRCUIT.
 6. INSTALL SALVAGED FIRE ALARM DEVICE, CONNECT TO EXISTING CIRCUIT AND FIRE ALARM ZONE.
 7. THE FLOOR BOX SHOWN IS THE SAME ONE SHOWN ON SHEET E4.
 8. PROVIDE WALL MOUNTED RECEPTACLE FOR OWNER PROVIDED TELEVISION. VERIFY LOCATION WITH VA PROJECT ENGINEER PRIOR TO ROUGH-IN. CONNECT TO EXISTING HOSPITAL TELEVISION DISTRIBUTION SYSTEM.
 9. INSTALL SALVAGED NURSE CALL DEVICE, CONNECT TO EXISTING NURSE CALL SYSTEM.
 10. MOUNT ALL DEVICES ALONG WALL BETWEEN FIN TUBE RADIATION AND WINDOW SILL. VERIFY MOUNTING HEIGHT WITH VA PROJECT ENGINEER PRIOR TO ROUGH-IN.
 11. INSTALL SALVAGED NURSE CALL ANNUNCIATOR PANEL, CONNECT TO EXISTING NURSE CALL SYSTEM.
 12. CONNECT TO EXISTING PAGING SYSTEM IN CORRIDOR.
 13. INSTALL CONDUIT RUN FROM FLOOR BOX TO WALL PRIOR TO FLOOR BEING IN-FILLED. COORDINATE INSTALLATION WITH GENERAL CONTRACTOR.
 14. REPROGRAM THE FIRE ALARM SYSTEM VOICE COMMUNICATION SYSTEM WITH THE NEW ZONE INDICATED.
 15. TO NEAREST EXISTING 'FRONT DESK' FIRE ALARM ZONE CIRCUIT.
 16. PROVIDE NEW NURSE CALL DEVICE. DEVICE MUST BE SIMILAR TO AND BE COMPATIBLE WITH JERON PRO-ALERT 640. DEVICE TO NOTIFY URGENT CARE STAFF OF EMERGENCY IN ONCOLOGY. DEVICE TO BE ROUTED TO EXISTING NURSE CALL IN URGENT CARE NURSE CALL STATION 1C-50.
 17. PROVIDE NEW CORDED NURSE CALL DEVICE. DEVICE MUST BE SIMILAR TO AND BE COMPATIBLE WITH JERON PRO-ALERT 640. DEVICE TO NOTIFY ONCOLOGY STAFF OF PATIENT REQUEST FOR ASSISTANCE VIA CEILING NURSE CALL LIGHT. CONNECT DEVICE TO NURSE CALL CONTROL CABINET IN ELECTRICAL ROOM 1C-83 AND NURSE CALL ANNUNCIATOR PANEL.
 18. PROVIDE NEW NURSE CALL DEVICE. DEVICE MUST BE SIMILAR TO AND BE COMPATIBLE WITH JERON PRO-ALERT 610. DEVICE TO NOTIFY ONCOLOGY STAFF OF PATIENT REQUEST FOR ASSISTANCE VIA CEILING NURSE CALL LIGHT.
 19. MOUNT DATA RECEPTACLE BELOW COUNTER TO ALLOW BELOW COUNTER CONNECTION TO REGISTER.
 20. TO NEAREST EXISTING 'FRONT DESK SOUTH' FIRE ALARM ZONE CIRCUIT.



Dept. of Veterans Affairs
Medical Center
2101 Elm Street North
Fargo, ND 58102

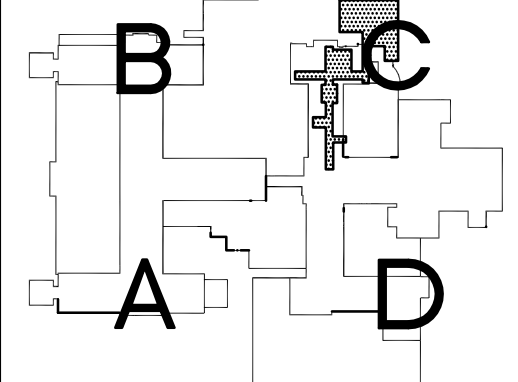


IMAGE GROUP INC.
403 CENTER AVENUE, SUITE 300
MOORHEAD, MN 56560

IMAGE GROUP INC., Architecture & Interiors
OBERMILLER NELSON ENGINEERING, Mechanical Engineers
MBN ENGINEERING, Electrical Engineers



MECHANICAL - ELECTRICAL - CIVIL
903 7th St N, Suite 200
FARGO, ND 58102
PHONE: 701-476-6338
FAX: 701-476-6340



Drawing Title
**FIRST FLOOR REMODELING
PLAN - SYSTEMS**

VA Project No.
437-13-104

Building No.
1, 46

Contract No.
**VA263-P-1217
VA263-C-**

AutoCAD File Name
13-061 E5.dwg

Project Title
**FARGO VA HEALTH CARE SYSTEM
RENOVATE FIRST FLOOR,
BUILDING 1**

Designed By
MB

Checked By
MB

Drawn By
TP

Location
**FARGO VA HEALTH CARE SYSTEM
FARGO, ND**

Date
MAY 10, 2013

AS NOTED

Drawing No.
E5

Dwg. 24 of 25

