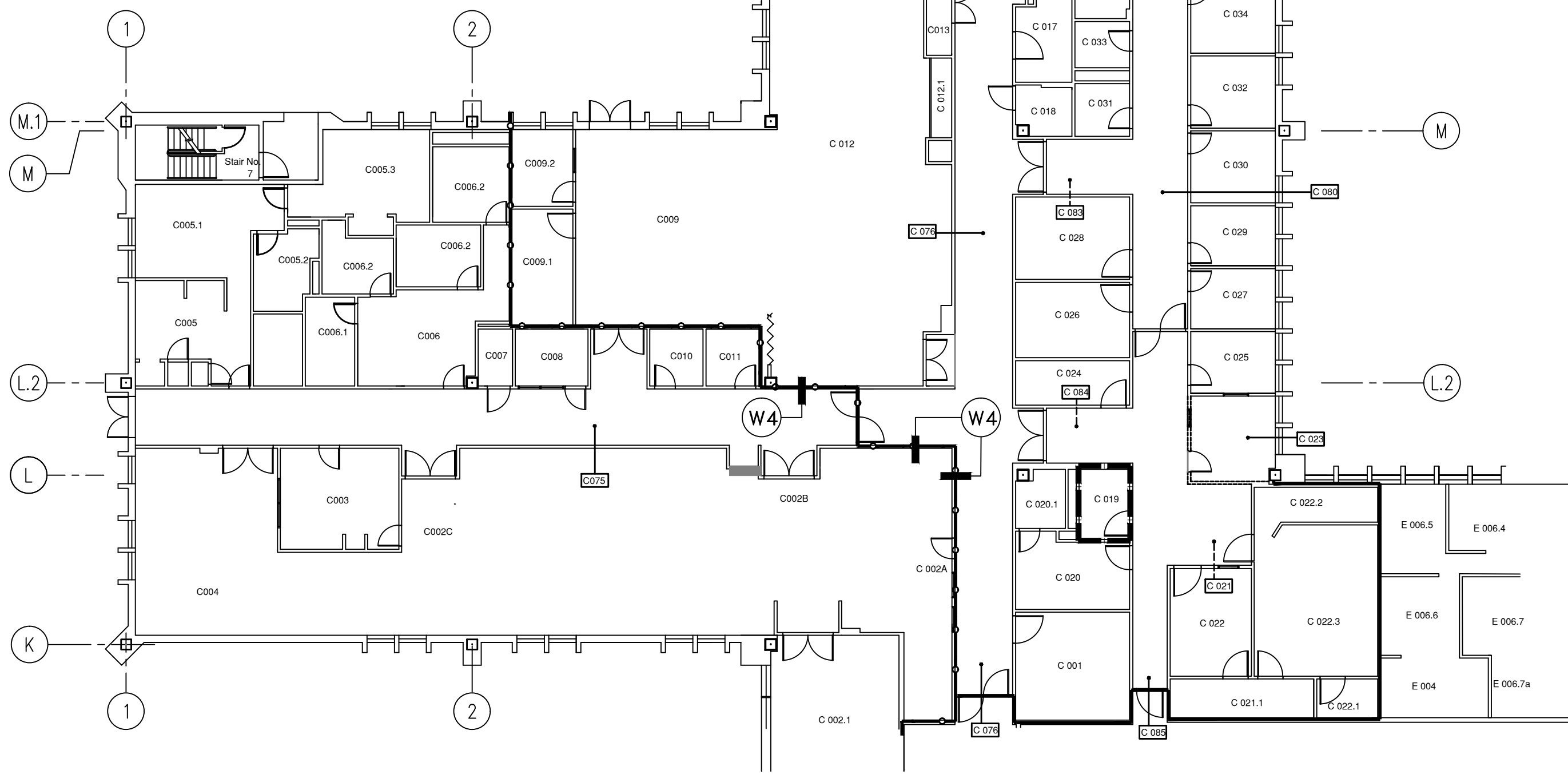
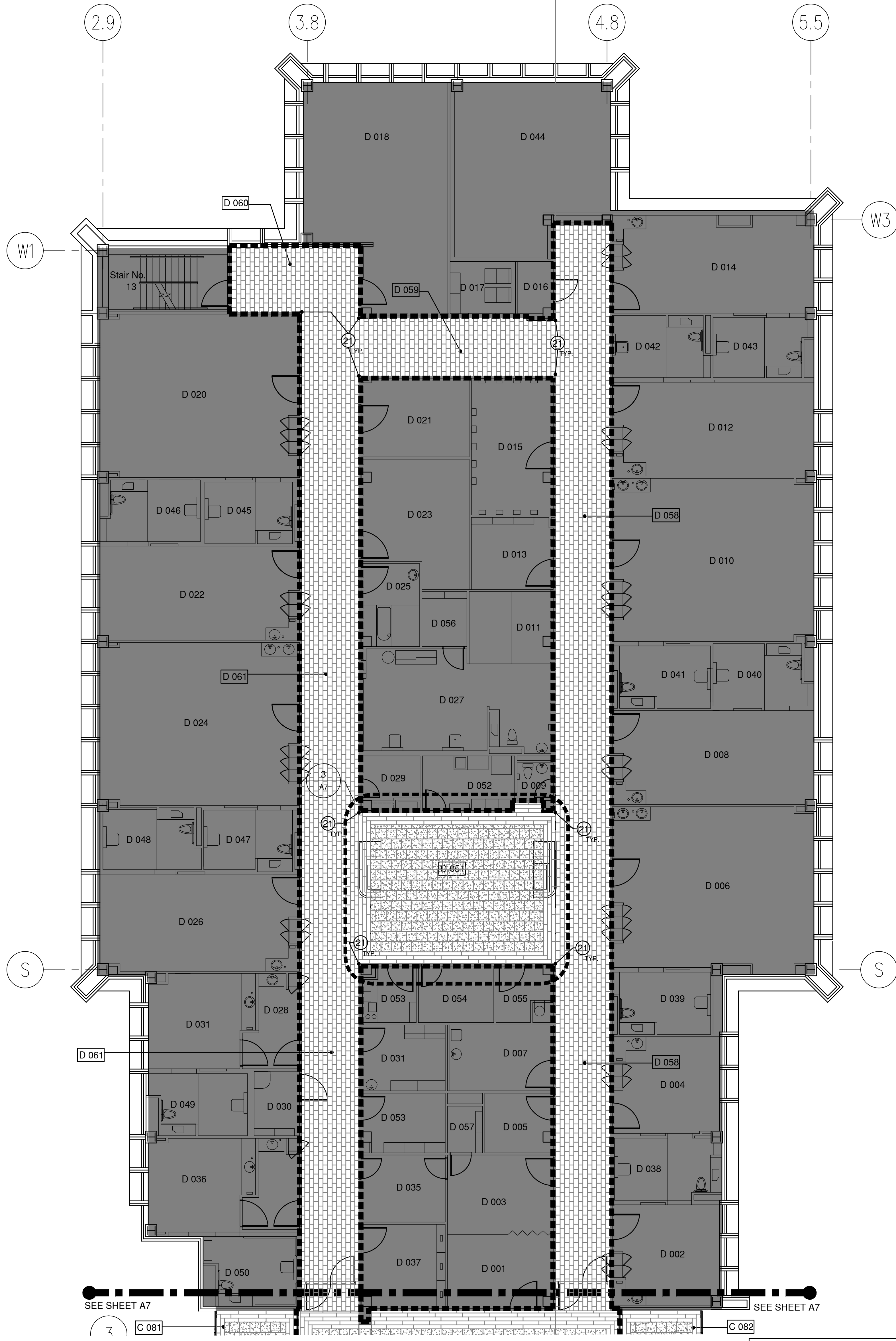


FIRE WALL RATING LEGEND FOR WALL TYPE W, SEE DETAIL 15/A13	
2-HR RATED SMOKE WALL	
1-HR RATED SMOKE WALL	
1-HR RATED FIRE WALL	



2 FIRE PROTECTION PLAN
1/16" = 1'-0"



1 PARTIAL FLOOR PLAN
1/8" = 1'-0"

PLANS LEGEND	
	NEW WALL FINISH WITH (N) GYPSUM BRD, PAINTED, (N) WALL BASE, (N) WALL PROTECTION, (N) HANDRAIL, (N) CHAIR RAIL
	MATCHLINE
	NEW WALL
	NOT IN SCOPE OF WORK
	VCT-1 48"X72" VINYL PLANK RANDOM PATTERN RE: FINISH SCHEDULE A11
	VCT-2 18" VINYL TILES ASTER PATTERN RE: FINISH SCHEDULE A11
	(E) CARPET FLOORING, FPROTECT IN PLACE

REFURBISHING AND REINSTALLATION OF WALL AND CEILING ITEMS AND DEVICES NOTE:

ALL EXISTING WALL MOUNTED ITEMS AND DEVICES REMOVED PRIOR TO DEMOLITION WORK, TO BE INVENTORIED AND THEIR LOCATION RECORDED, TO BE FULLY REFURBISHED, AND REINSTALLED IN THE NEW WALL AND CEILING ASSEMBLIES. LOCATION TO BE VERIFIED BY RESIDENT ENGINEER.

ITEMS INCLUDE, BUT NOT LIMITED TO:

MAGNETIC HOLD-OPENS, DOOR STOPS, HAND SANITIZER DISPENSERS, MIRRORS, FIRE STROBES, SWITCHES, ELEVATOR DIRECTION SIGNAL, FIREHOSE CABINET, FIRE EXTINGUISHER CABINET, ELECTRIC COVER PLATES, FIRE ALARM PULL BOX, WATER COOLER, MONITORS, CCTV CAMERAS, ELECTRIC OUTLETS, SIGNAGE, BULLETIN BOARDS, DISPLAY CASE, CARD READER, CLOCK, DATA OUTLET, WALL MOUNTED ELECTRIC DOOR, PUSH BUTTON, FIRE CONTROL BOX, MEDICAL GAS PANEL, PHONE, PORTABLE X-RAY HOOK UP, ROOM SIGNAGE, SPEAKERS, SMOKE DETECTORS, WIFI, NURSE CALL

TYPICAL WALL PROTECTION NOTES

- CG-1 SERIES TYPICAL, TO BE LOCATED AT ALL OUTSIDE CORNERS, CG-2 AT ALL FIRE-RATED WALL CORNERS, U.O.N.
- ALL HANDRAILS TO BE MOUNTED AT 2'-10" A.F.F. TO TOP OF HANDRAIL, U.O.N.
- WALL GUARD MOUNTING HEIGHTS (TO TOP OF WALL GUARD): WG-1, 16" A.F.F. U.O.N.
- CHAIR RAIL W/ END CAPS COUNTINOUS ALL WALLS, TO BE 4'-2" A.F.F. TO TOP OF CHAIR RAIL
- DO NOT INSTALL HANDRAIL BEHIND DOORS HELD OPEN, U.O.N.
- PAINT ALL METAL EQUIPMENT, CABINET DOORS/FRAMES ON WALL (OTHER THAN STAINLESS STEEL) TO MATCH WITH WALL COLOR, TYP. OR AS DIRECTED BY COR
- SEE SHEET A11 FOR INTERIOR ELEVATIONS

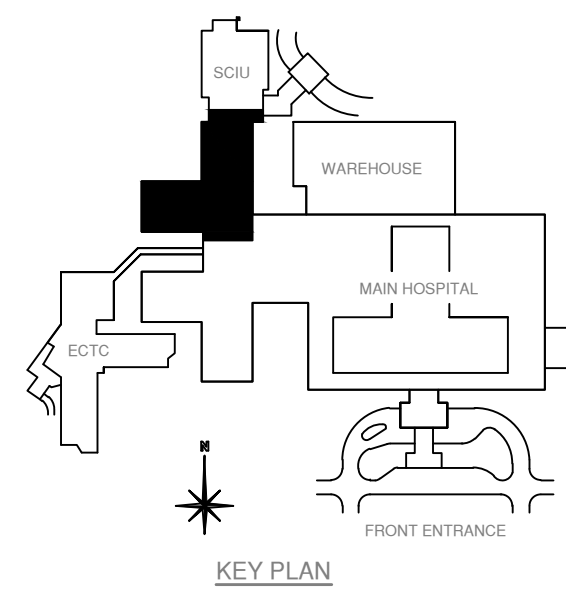
TYPICAL FLOOR PATTERN NOTES

- CONTRACTOR SHALL INSTALL NEW FLOORING IN PATTERNS INDICATED TO THE GREATEST EXTENT POSSIBLE. PATTERN DEVIATIONS SHALL BE APPROVED BY THE C.O.T.R. PRIOR TO INSTALLATION
- TERMINATE OR TRANSITION DISSIMILAR FLOORING MATERIALS AT THE CENTERLINE OF DOORS. REF. DETAILS 11/A13, 12/A13 AND 13/A13 FOR FLOOR TRANSITION DETAILS
- PROVIDE TRANSITION STRIP WHERE ALL NEW FLOORING ABUTS EXISTING ADJACENT FINISHES. TRANSITION STRIP IS NOT REQUIRED WHERE FLOORING MATERIALS ARE IDENTICAL AND TRANSITION BETWEEN NEW AND EXISTING FLOORING MATERIALS ARE FULLY FLUSH.
- REMOVE, REFURBISH, AND REINSTALL ALL EXISTING DOOR STOPS
- PROVIDE CONTINUOUS SEALANT AROUND DOOR FRAMES AND CORNER GUARDS. VERIFY COLOR WITH COR

TYPICAL DOOR PROTECTION NOTES

- ALL DOORS OCCURRING IN CORRIDOR WITH PLYWOOD VENEER FINISH, INCLUDING PLYWOOD CABINET DOORS, TO BE REFINISHED ON BOTH SIDES. REFINISHING OF DOORS TO BE PER INDUSTRY STANDARDS, INCLUDING SANDING, PRIMING, STAINING (TO MATCH EXISTING) AND APPLICATION OF MULTIPLE COATS OF PROTECTIVE COATING (LOW VOC POLYURETHANE)
- REMOVE (E) KICKPLATE, FILL IN HOLES AND REFINISH PER NOTE 1, INSTALL (N) DOOR PROTECTION DP-1, PER SCHEDULE ON SHEET A12 AND SPECS.
- REMOVE, REFURBISH AS REQUIRED, AND REINSTALL ALL (E) HARDWARE AND ANY SIGNAGE AS OCCRS, UNLESS DIRECTED OTHERWISE BY COR.
- ALL METAL DOORS, DOOR FRAMES INCLUDING FRAMES OF VISION PANELS WHERE OCCUR, METAL CABINET DOORS & FRAMES TO BE PAINTED PT-2 PER FINISH SCHEDULE

FLOOR PLAN KEYNOTES: 21-30			DET #
21	CORNER GUARD- CG-1, TYP.		1/A12
22	END CAP CORNER GUARD- CG-2		3/A12
23	INSTALL 4" WALL BASE (RB-1) UNDER WINDOW FRAME FOR THE LENGTH OF WINDOW ONLY.		
24	FLOOR EXPANSION JOINT		8/A13
25	WALL EXPANSION JOINT		9/A13
26	NEW WALL, INSTALL SALVAGED AND REFURBISHED DOOR AND HARDWARE.		2/A7
27	DRINKING FOUNTAIN, REINSTALL PER ADA REQUIREMENTS		4/A12
28	REPLACE COUNTER WITH NEW NEW		11/A12



SEE SHEET A2 FOR PHASING PLAN
PHASE 'G' NOT IN CONTRACT

<p>NOTE: THE RESIDENT ENGINEER MUST BE NOTIFIED 24 HOURS IN ADVANCE OF ANY COMPROMISE IN THE FIRE SUPPRESSION OR SMOKE DETECTION SYSTEMS. A COPY OF THE INTERIM LIFE SAFETY CODE MEASURES MUST BE OBTAINED AND FOLLOWED DURING CONSTRUCTION.</p>		<p>Approved: Service Chief</p> <p>Concur M & O</p> <p>Concur Bio-Med</p> <p>Concur Safety</p> <p>Approved: Service Chief</p> <p>Approved: Admin. Officer</p>	<p>Approved: Service Chief</p> <p>Approved: Service Chief</p> <p>Approved: Service Chief</p> <p>Approved: Service Chief</p> <p>Approved: Admin. Officer</p>	<p>Drawing Title</p> <p>FLOOR PLAN</p> <p>Approved: Chief of Engineering</p> <p>Approved: Associate Director</p>	<p>Project Title</p> <p>SPINAL CORD INJURY UNIT CORRIDORS RENOVATION</p> <p>Building Number 1</p> <p>Checked RM</p> <p>Drawn NS</p> <p>Location AUDIE L. MURPHY MEMORIAL VETERANS HOSPITAL - SAN ANTONIO, TEXAS</p>	<p>Date</p> <p>04-04-2013</p> <p>Project No.</p> <p>671-13-105</p> <p>DRAWING NO.</p> <p>A8</p>	<p>Office of Facilities</p> <p>Department of Veterans Affairs</p>
Revisions	Date						