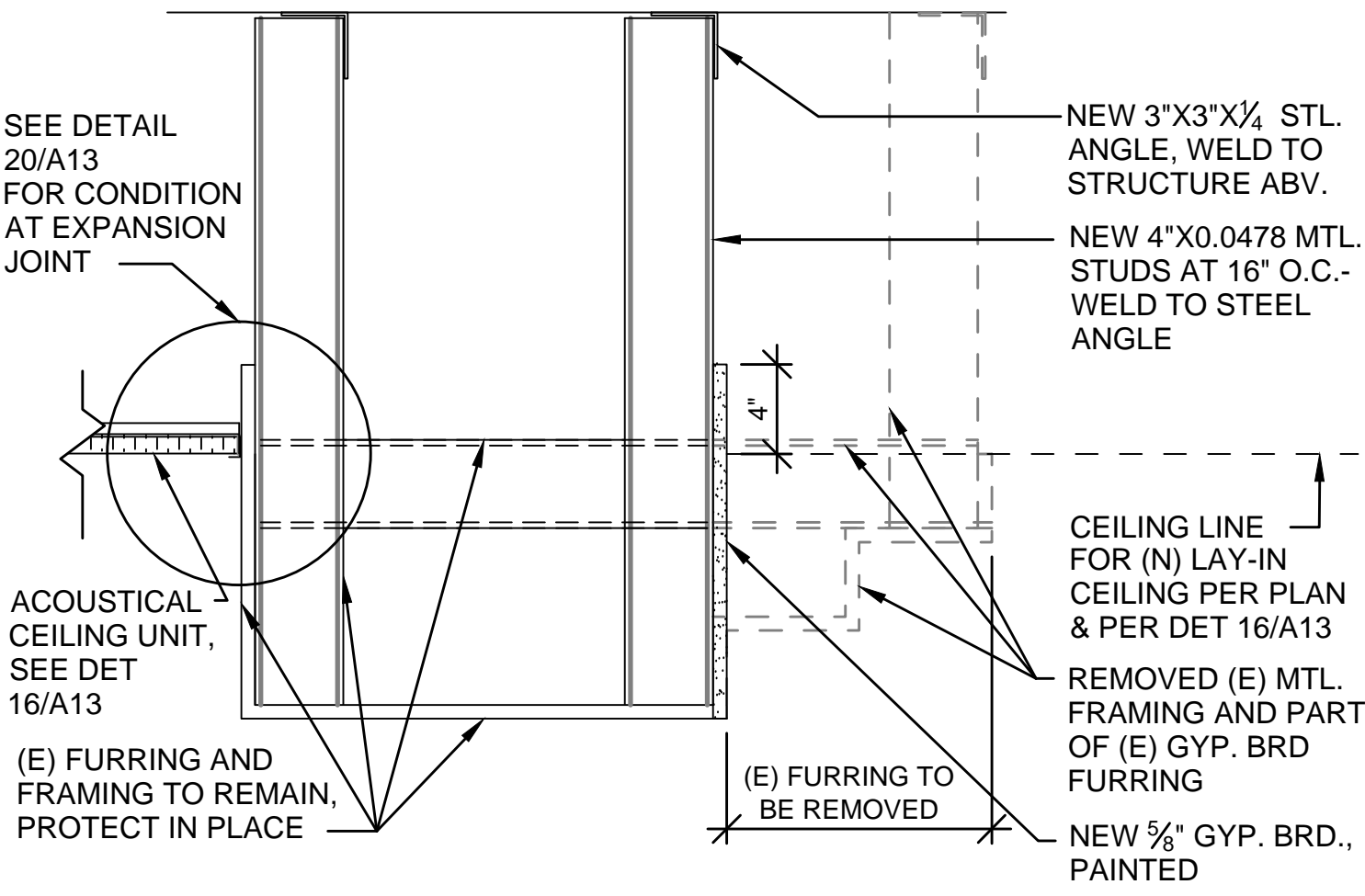
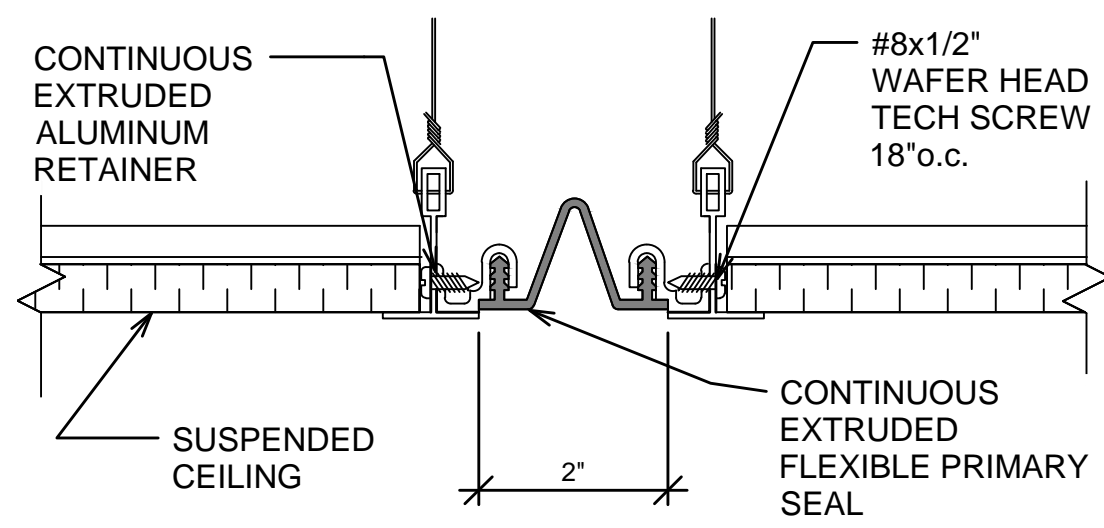


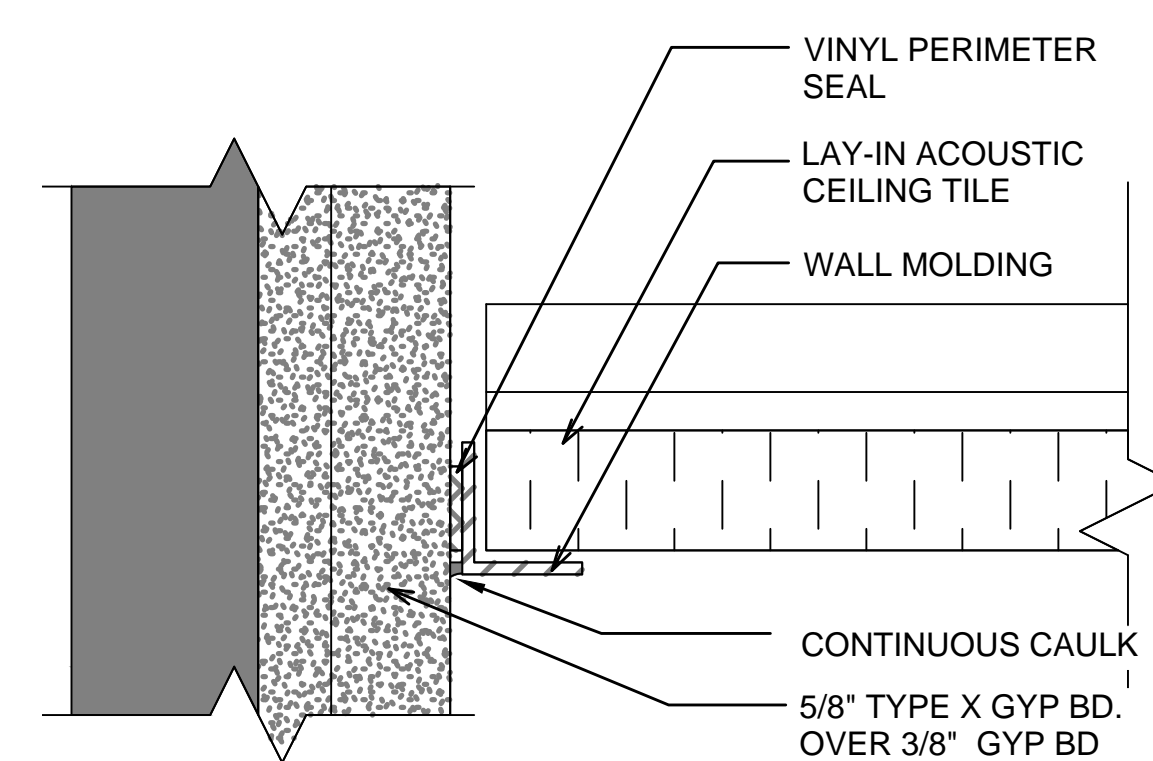
20 EXPANSION JOINT AT FURRING
1 1/2" = 1'-0"



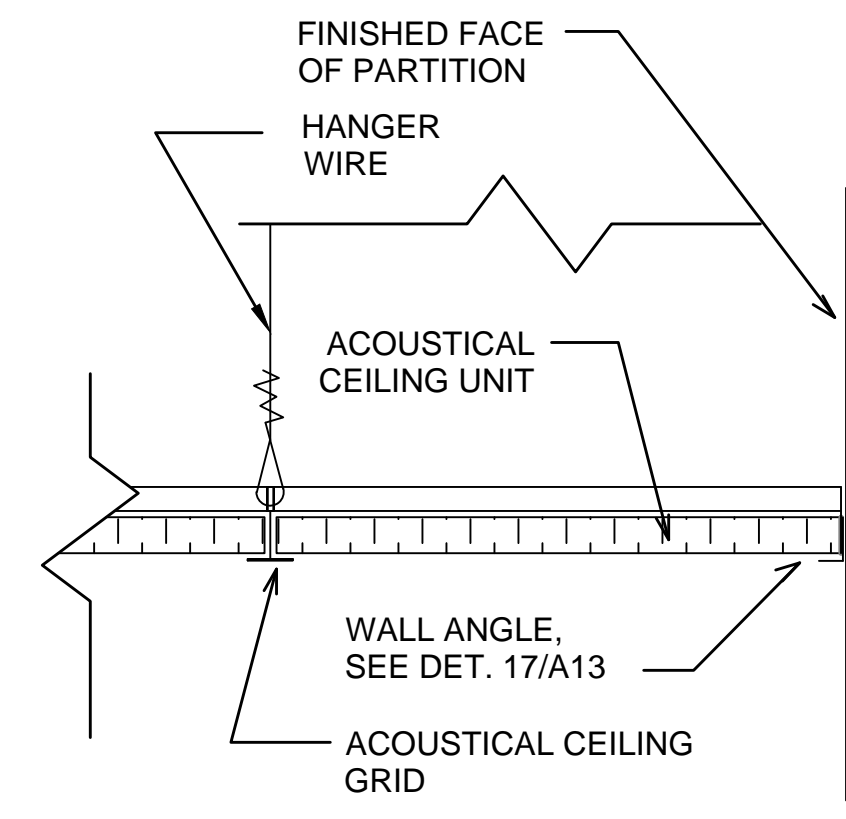
19 FURRING DETAIL
1 1/2" = 1'-0"



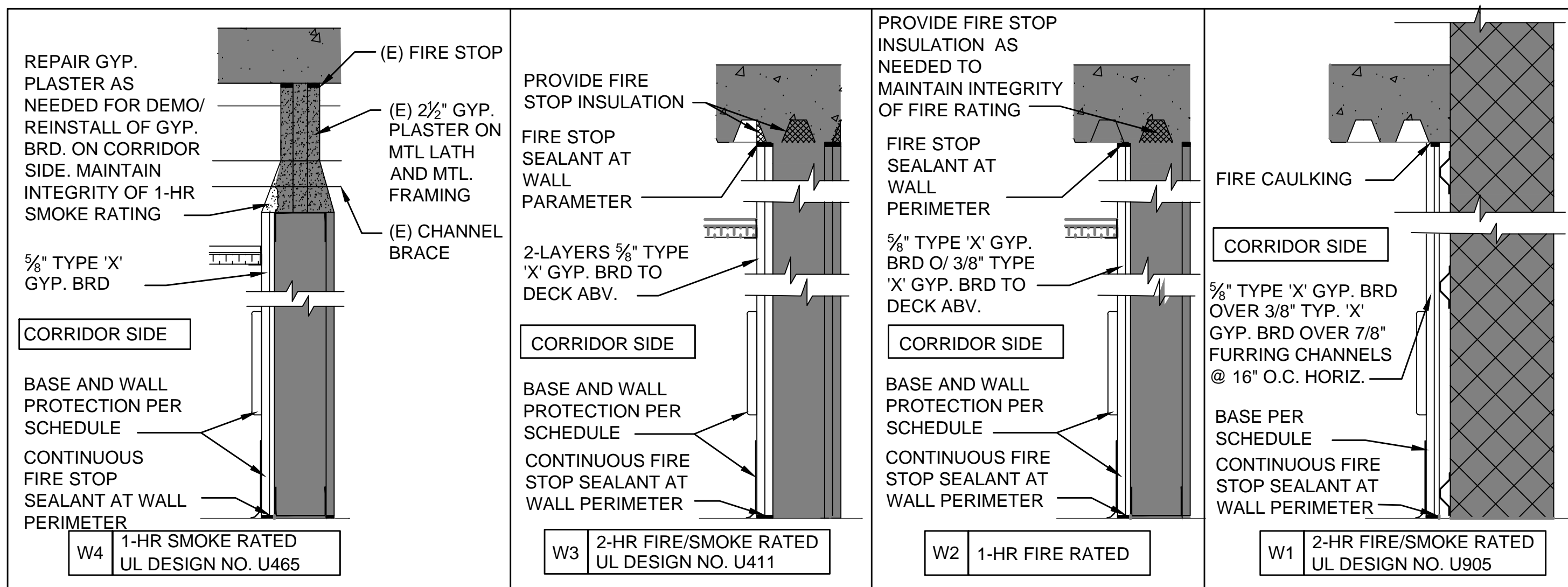
18 SUSPENDED CEILING EXPANSION DETAIL
6" = 1'-0"



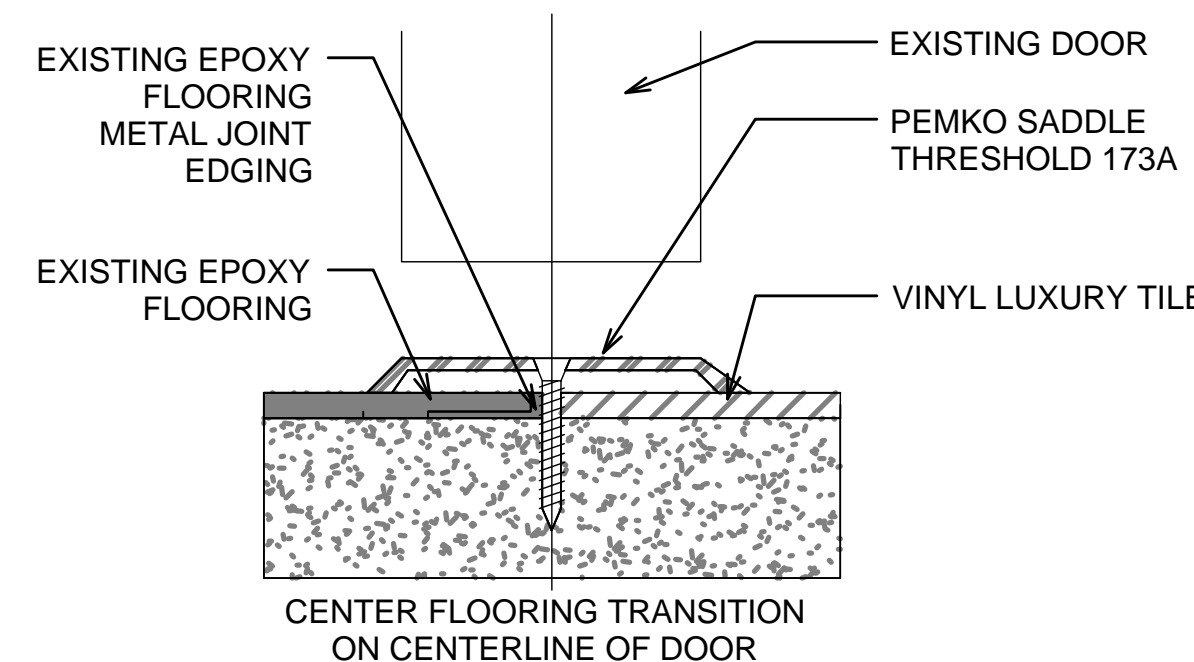
17 CEILING WALL ANGLE DETAIL
12" = 1'-0"



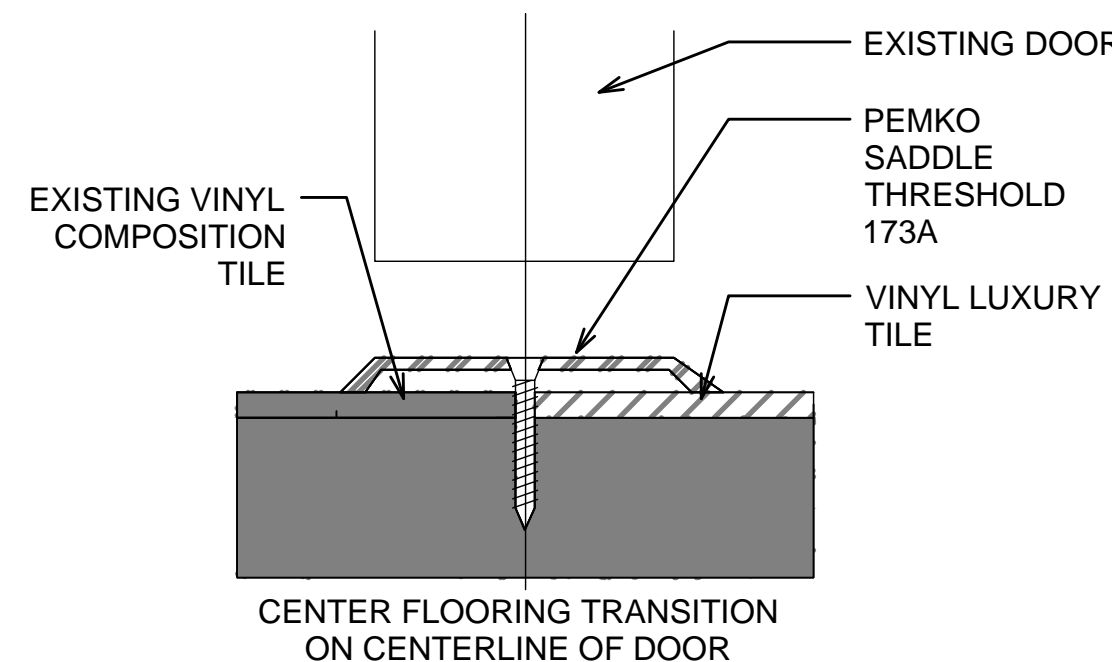
16 ACOUSTICAL TILE CEILING DETAIL
3" = 1'-0"



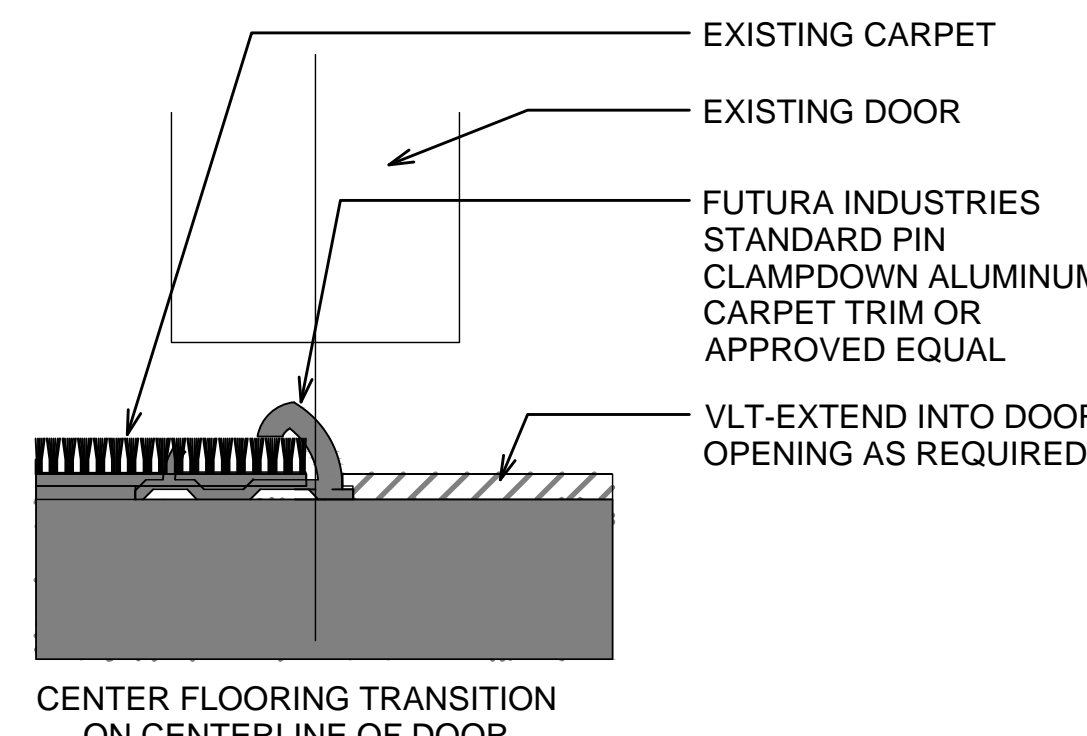
15 FIRE RATED WALL
1 1/2" = 1'-0"



13 FLOORING TRANSITION - EPOXY TO LVT
12" = 1'-0"

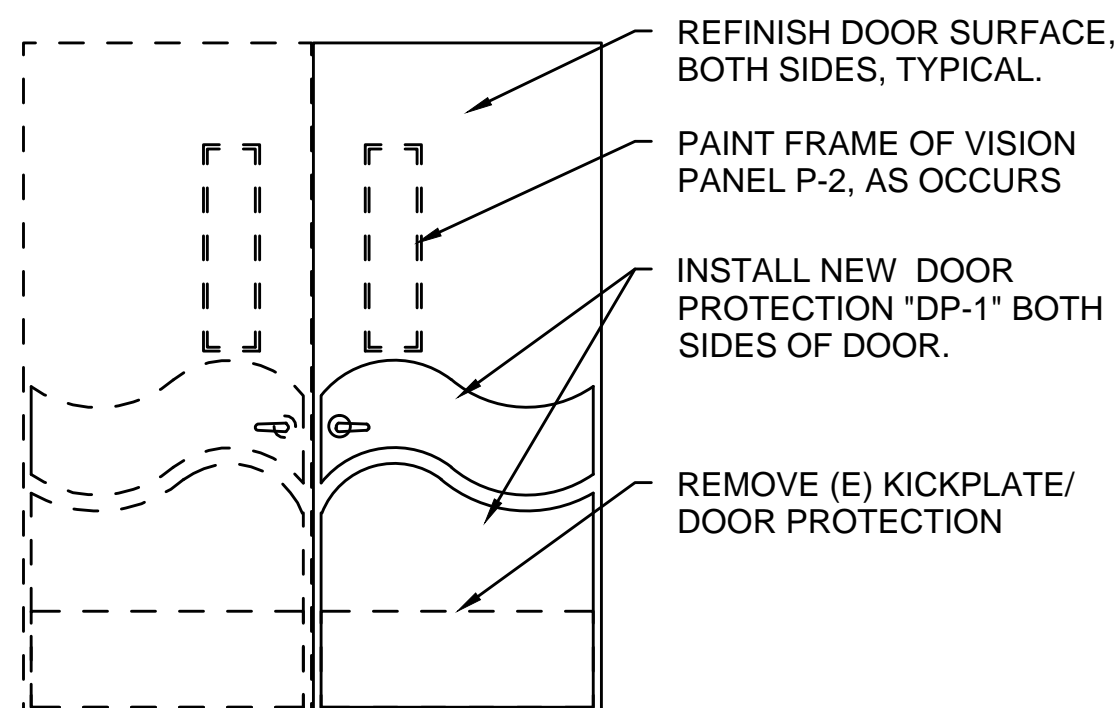


12 FLOORING TRANSITION - VCT TO VLT
12" = 1'-0"

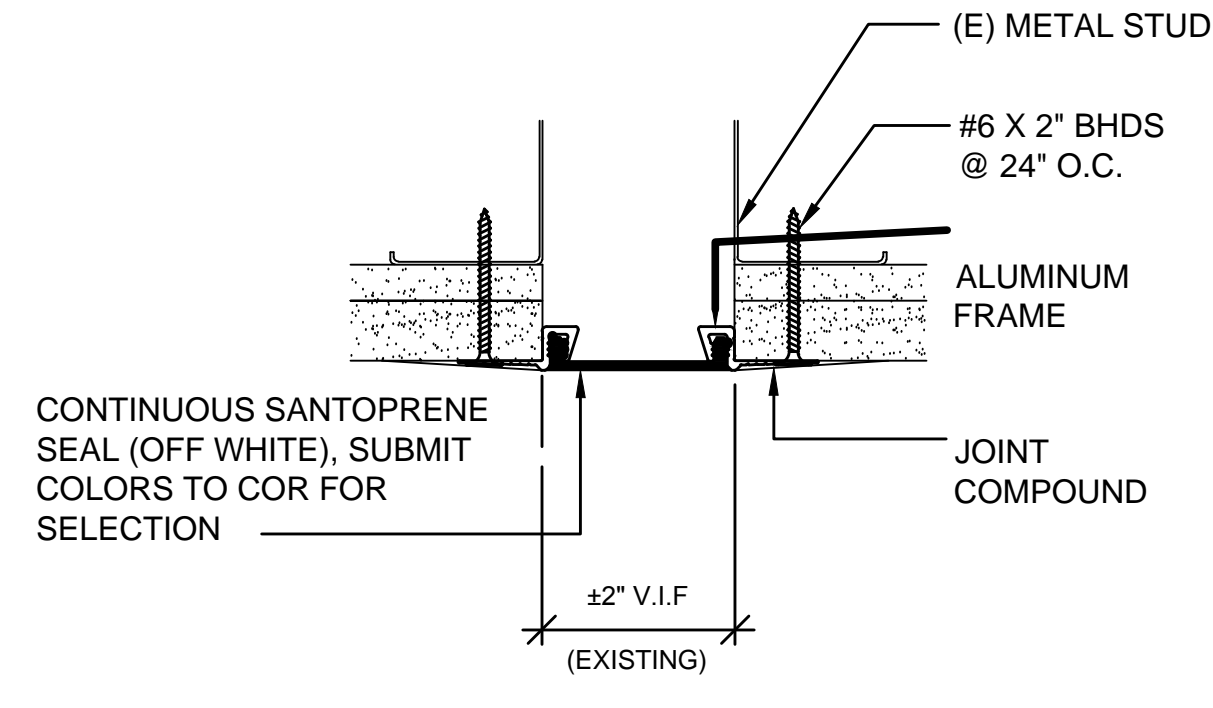


11 FLOORING TRANSITION - CARPET TO VLT/VCT
12" = 1'-0"

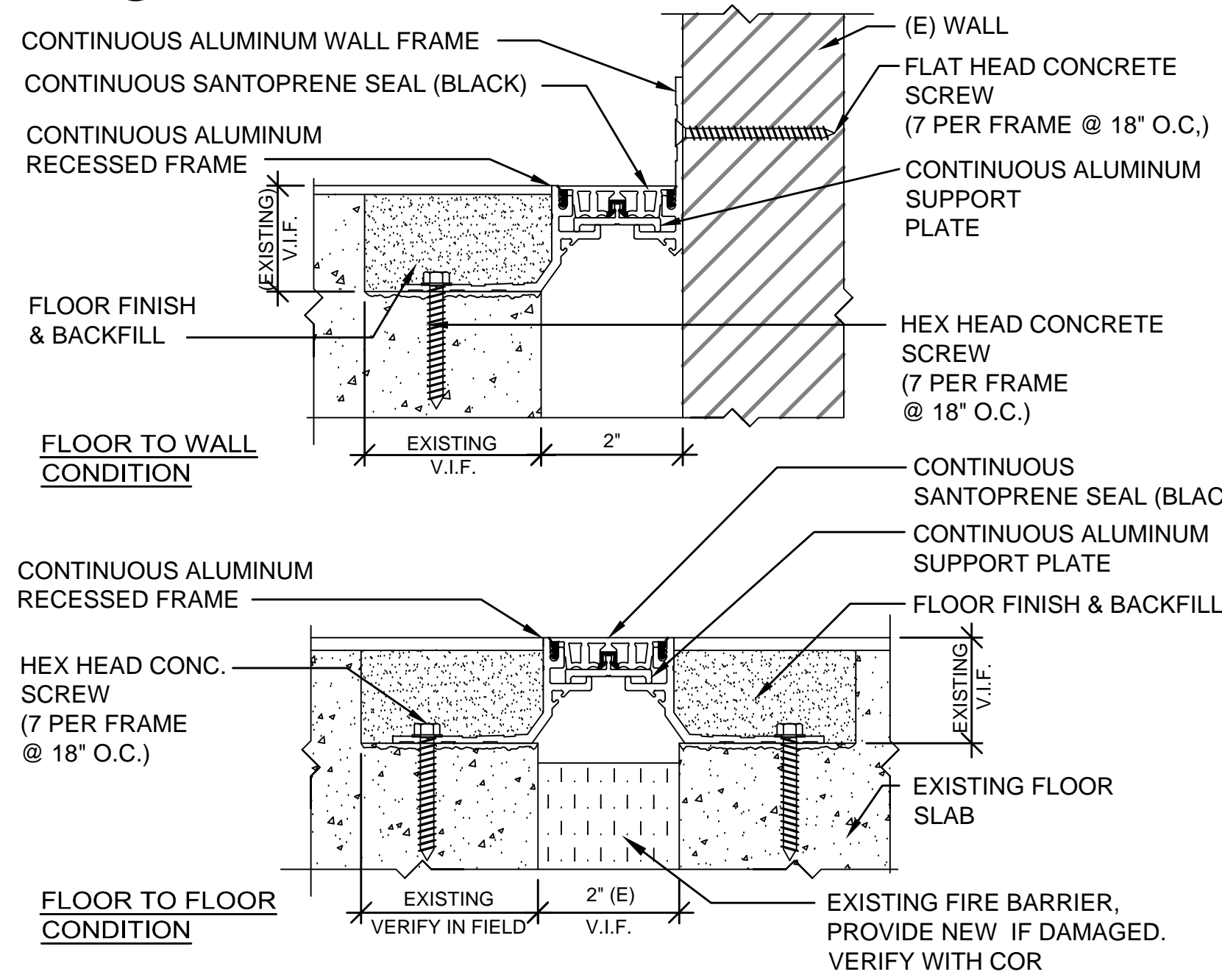
NOTE:
ALL WOOD DOORS, SINGLE OR DOUBLE, OCCURRING IN CORRIDORS (TO BE REMODELED PER THIS PROJECT) TO RECEIVE DOOR PROTECTION. REFURBISH AND REINSTALL ALL (E) DOOR HARDWARE, SIGNAGE ETC.
FOR MATERIAL REF. SEE SHEET A12



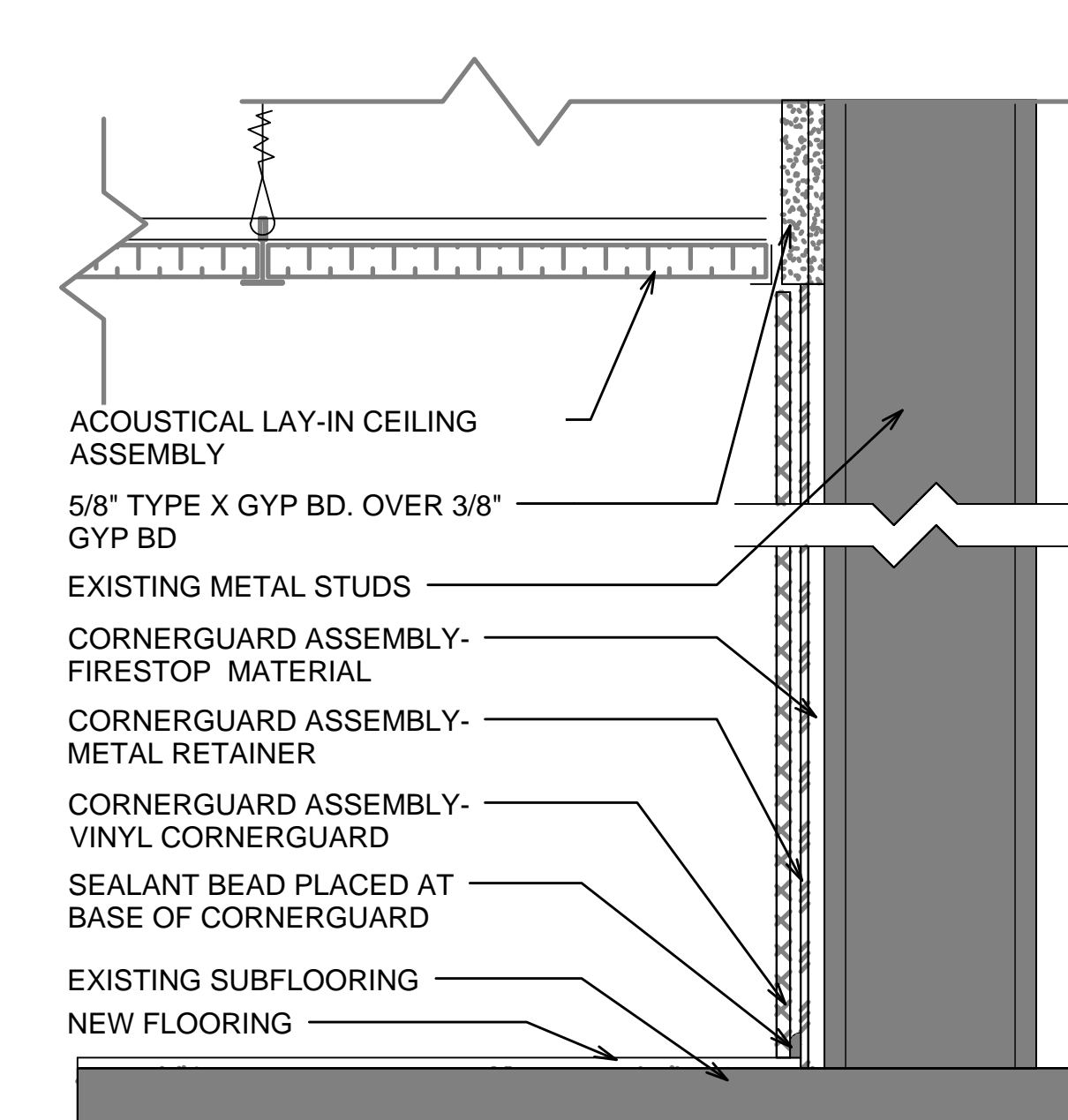
10 TYPICAL DOOR PROTECTION DETAIL
1/12" = 1'-0"



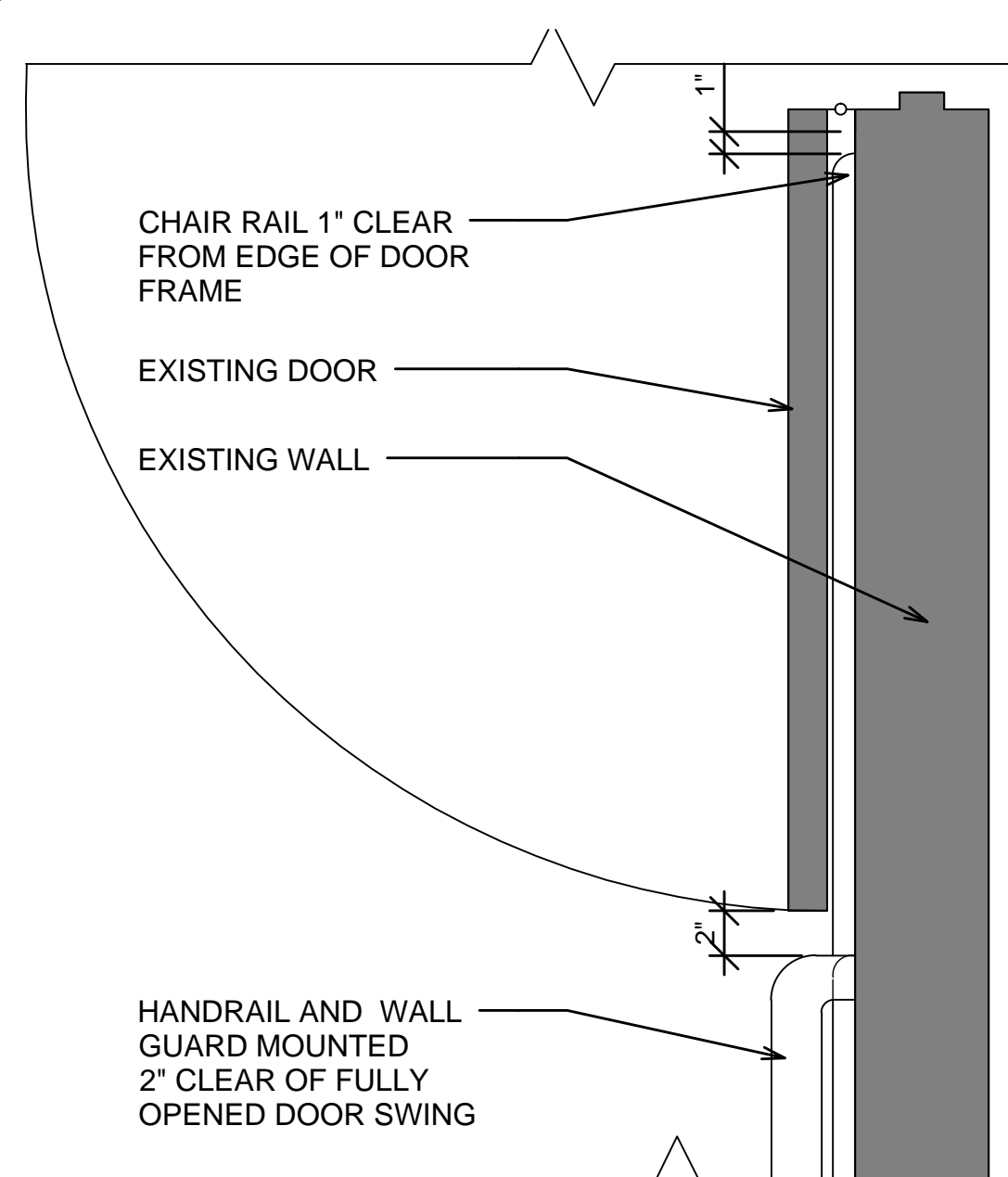
9 WALL EXPANSION JOINT DETAIL
6" = 1'-0"



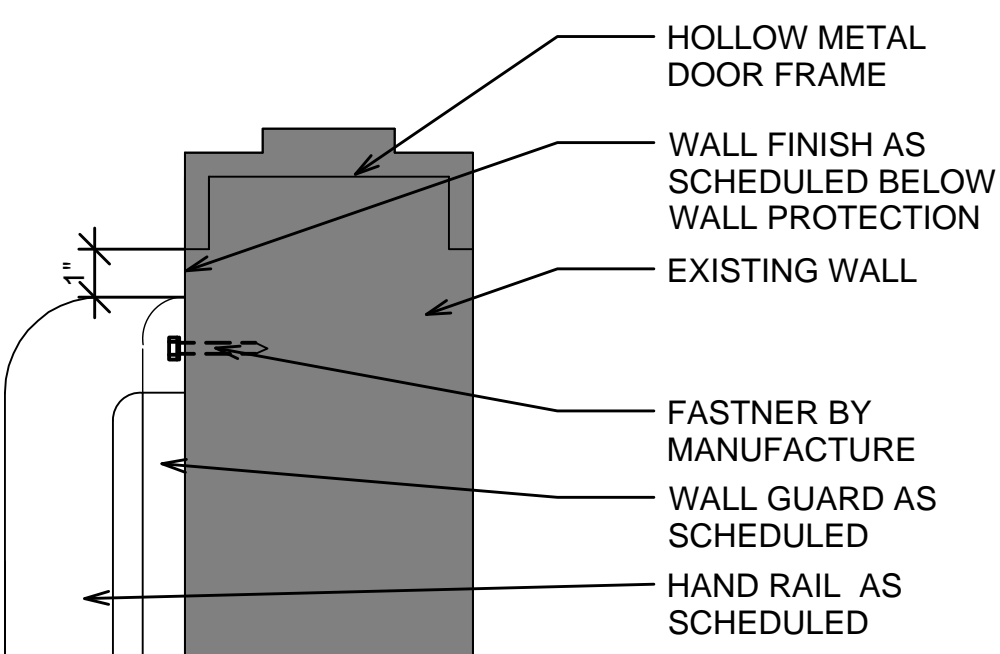
8 FLOOR EXPANSION JOINT DETAIL
6" = 1'-0"



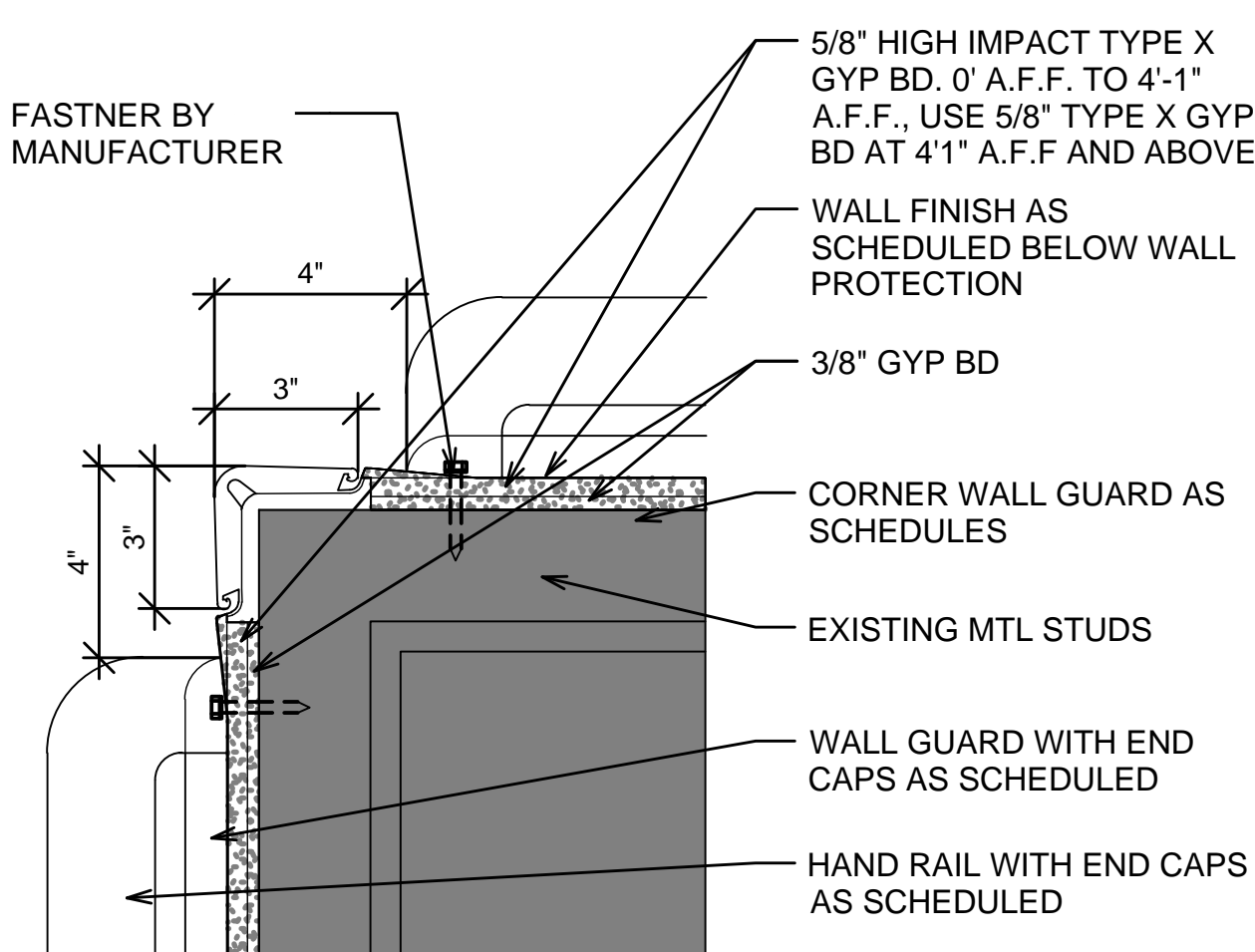
7 CORNERGUARD SEAL AT FLOOR SECTION
3" = 1'-0"



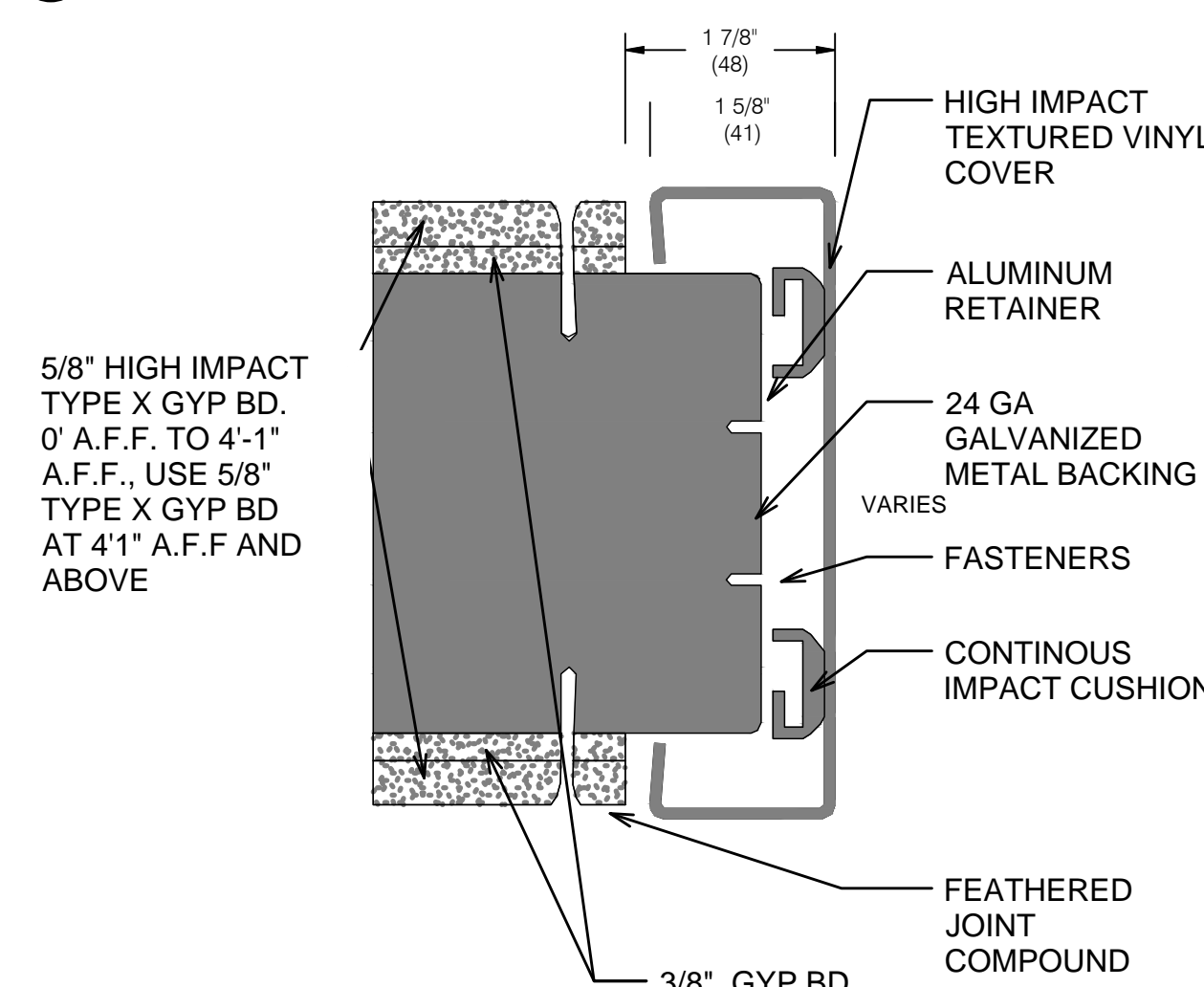
6 HANDRAIL CLEARANCE AT FULLY OPENED DOOR
1 1/2" = 1'-0"



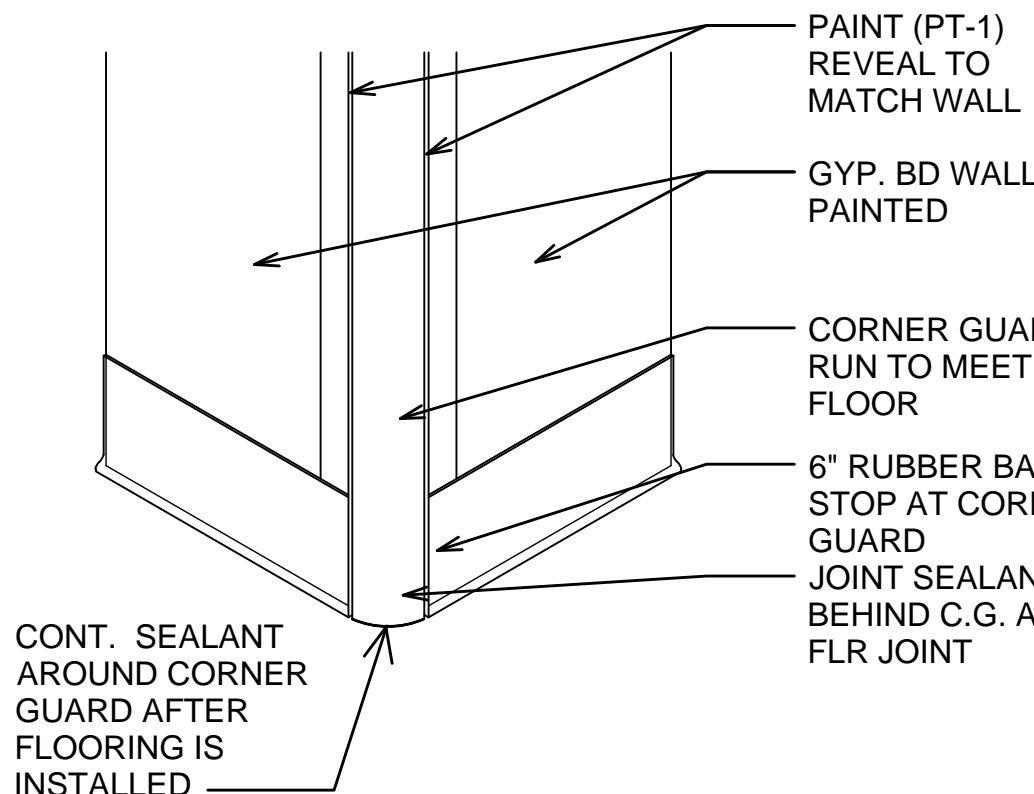
5 WALL PROTECTION AT DOOR FRAME
3" = 1'-0"



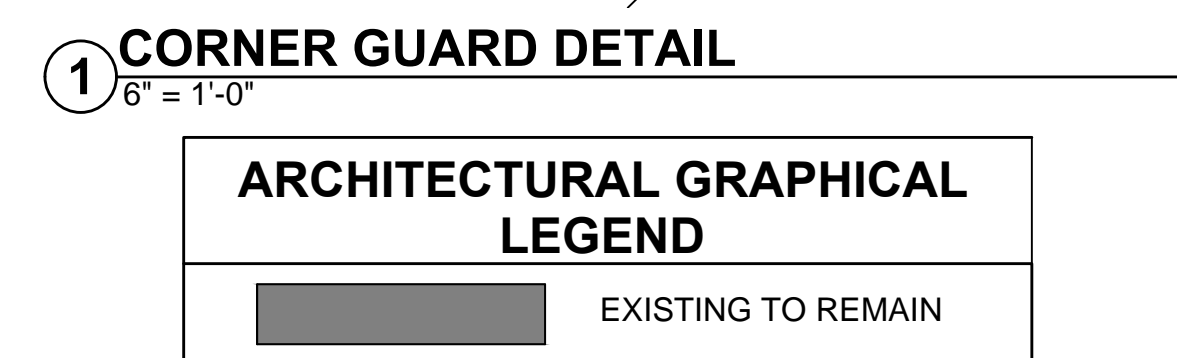
4 WALL PROTECTION AT OUTSIDE CORNER
3" = 1'-0"



3 END WALL PROTECTION DETAIL
1" = 1'-0"




2 RUBBER BASE CORNER ISOMETRIC DETAIL
1" = 1'-0"



1 CORNER GUARD DETAIL
6" = 1'-0"



Revisions		Date	Approved: Service Chief		Approved: Service Chief	Drawing Title	Project Title	Date	
			Concur M & O		Approved: Service Chief	DETAILS	SPINAL CORD INJURY UNIT CORRIDORS RENOVATION	04-04-2013	
			Concur Bio-Med		Approved: Service Chief			Project No. 671-13-105	
			Concur Safety		Approved: Service Chief	Approved: Chief of Engineering	Building Number 1	Checked RM	
			Approved: Service Chief		Approved: Admin. Officer	Approved: Associate Director	Drawn NS	DRAWING NO. A13	
						Location AUDIE L. MURPHY MEMORIAL VETERANS HOSPITAL - SAN ANTONIO, TEXAS			