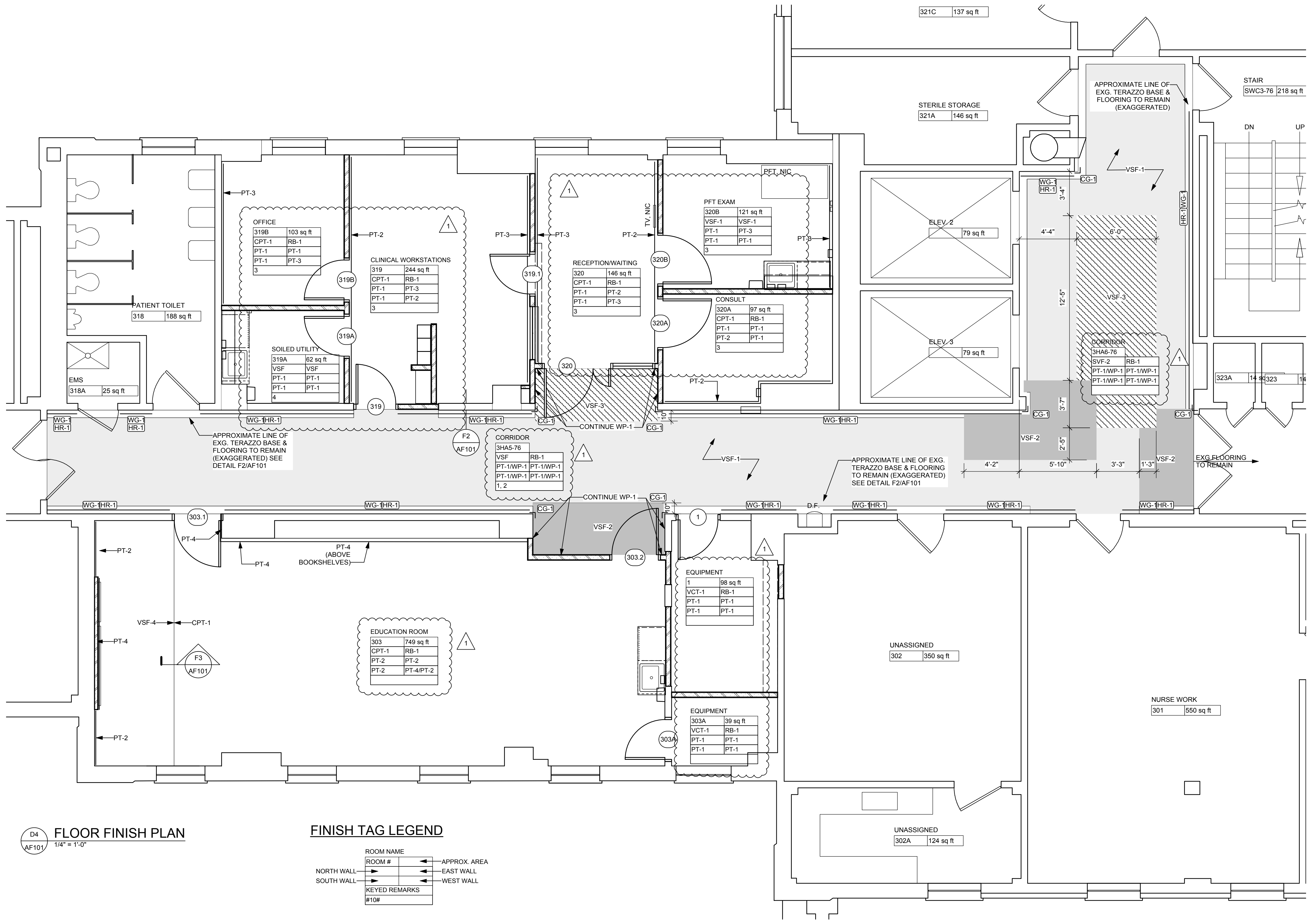


FINISH LEGEND			
FINISH	MANUFACTURER	STYLE	COLOR
ACOUSTICAL CEILING TILE AT-1	ARMSTRONG	CORTEGA 2x2 #770	WHITE
CARPET CPT-1 (FIELD)	INTERFACE	12644 WALK THE PLANK	8764 MAPLE
CHAIR RAILS CR-1	MATCH EXISTING		
HANDRAILS HR-1	MATCH EXISTING		
PAINT P-1 (FIELD) P-2 (FIELD) P-3 (ACCENT) P-4 (ACCENT) P-5 (DOOR FRAME) P-6 (CEILINGS)	SHERWIN WILLIAMS SHERWIN WILLIAMS SHERWIN WILLIAMS SHERWIN WILLIAMS SHERWIN WILLIAMS SHERWIN WILLIAMS	GLOSS LEVEL 3 GLOSS LEVEL 3 GLOSS LEVEL 3 GLOSS LEVEL 3 GLOSS LEVEL 3 GLOSS LEVEL 3	SW7690 MODEST WHITE SW7065 ARGOS SW6577 SPECIAL GREY SW7065 SANTORINI BLUE SW7690 TOWNHALL TAN CEILING WHITE
PLASTIC LAMINATE PLAM-1 (CABINETS)	WILSONART	-	7919-78 AMBER CHERRY
RUBBER BASE RB-1 (CPT) RB-2 (CORRIDOR, SVF)	ROPPE ROPPE	6" HIGH 6" HIGH	632 FLAX 632 FLAX
SHEET VINYL FLOORING VSF-1 VSF-2 VSF-3 VSF-4	ARMSTRONG ARMSTRONG ARMSTRONG ARMSTRONG	PETIT POINT PETIT POINT PETIT POINT REJUVINATIONS TIMBERLINE	88201 CREAM HINT SVF-B. 88214: MONTELMAR BEIGE SVF-A. 88215 CHOCOLATE DELITE
SOLID SURFACING SS-1	MATCH EXISTING		
VINYL COMPOSITION TILE VCT-1	ARMSTRONG	STANDARD EXCELON	TBD
WALL GUARD WG-1	MATCH EXISTING		
WALL PROTECTION WP-1	MATCH EXISTING		



D4
AF101
1/4" = 1'-0"

FINISH TAG LEGEND

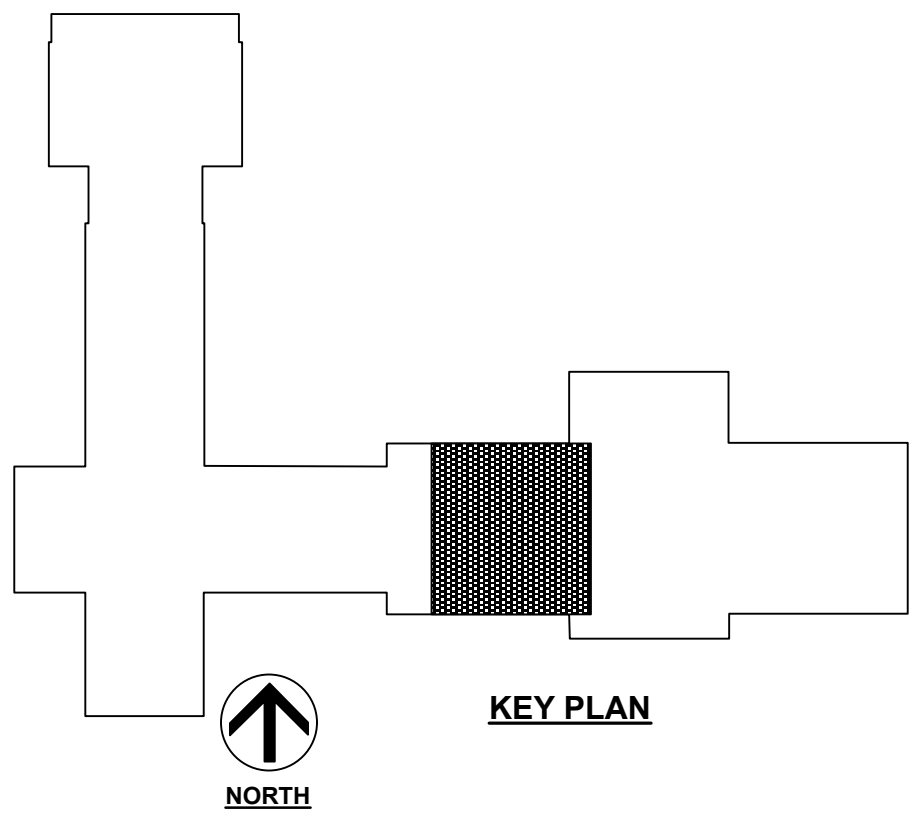
ROOM NAME	ROOM #	APPROX. AREA
NORTH WALL		EAST WALL
SOUTH WALL		WEST WALL
KEYED REMARKS		
#10#		

GENERAL NOTES

- ALL CHANGES IN FLOORING FROM EXISTING TO NEW, OR NEW TO NEW REQUIRE A TRANSITION STRIP. TRANSITION STRIP TO BE LOCATED AT UNDER SIDE OF CLOSED DOOR, NOT DOOR FRAME. COLOR TO BE SELECTED BY ARCHITECT.
- NOTIFY ARCHITECT OF ANY DISCREPANCIES BETWEEN SCHEDULES AND DRAWINGS FOR CLARIFICATION.
- REFER TO SUPPLEMENTARY GENERAL CONDITIONS FOR FURTHER INFORMATION REGARDING CONSTRUCTION DOCUMENTS.
- REFER TO REFLECTED CEILING PLAN FOR ACT/GPDW SOFFIT LOCATIONS AND ELEVATION VARIATIONS. PAINT ALL GPDW CEILINGS AND SOFFITS PT-1, UNLESS OTHERWISE NOTED ON REFLECTED CEILING PLANS. ALL BULKHEAD SURFACES TO BE PAINTED ADJACENT WALL COLOR UNLESS OTHERWISE NOTED.
- ALL NEW AND EXISTING HOLLOW METAL FRAMES TO BE PAINTED PT-5 WITH SEMI-GLOSS PAINT.

KEYED NOTES

- INSTALL WP-1 TO 30" AFF +/-, MATCH ADJACENT EXISTING, PAINT ABOVE. INSTALL WG-1 AND HR-1 TO MATCH EXISTING SPACES. SEE PLAN FOR LOCATIONS. SEE SPECIFICATIONS.
- INSTALL RUBBER BASE IN LOCATIONS WHERE THE SVF MEETS THE CORRIDOR PARTITION. SEE DETAIL F2/AF101 FOR INFORMATION ON BASE/FLOORING INSTALLATION AT EXISTING TERRAZZO WALL BASE/FLOOR BORDER.
- SEE PLANS AND REFLECTED CEILING PLANS FOR ACCENT PAINT LOCATIONS.
- PROVIDE INTEGRAL COVE BASE TO 6" AFF



KEY PLAN

NORTH

ARCHITECT:

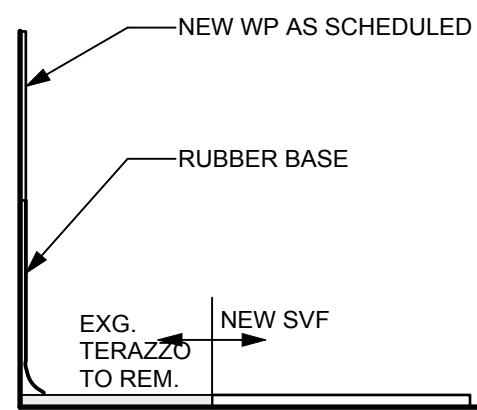
king + king
ARCHITECTS

358 WEST JEFFERSON ST.
SYRACUSE, NY 13202
PHONE: 315-682-6180
FAX: 315-682-7891

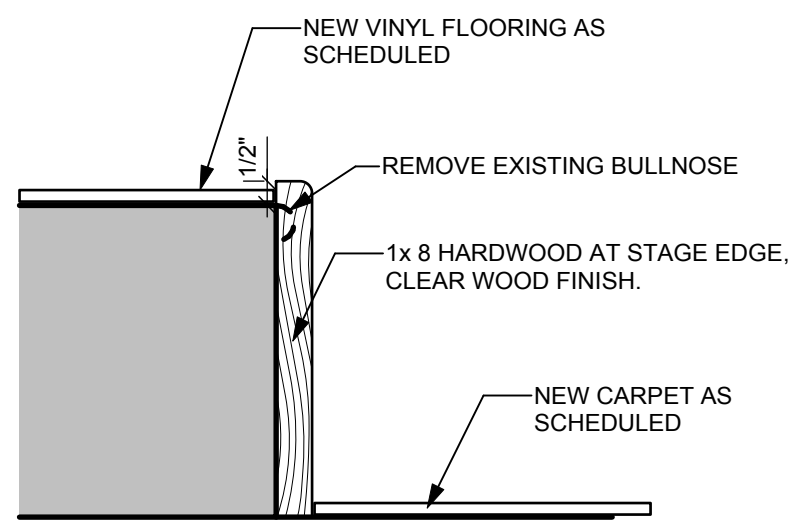
ENGINEER:

EVERETT
ENGINEERS

1740 MASSACHUSETTS AVE., SUITE D
BOXBOROUGH, MA 01710
PHONE: 978-268-3711
FAX: 978-268-3712



F2
AF101
3" = 1'-0"



F3
AF101
3" = 1'-0"

ALL WORK TO BE IN ACCORDANCE WITH
N.F.P.A., NATIONAL, STATE AND CITY
CODES & O.S.H.A.

Approved: Logistics Manager. Date

Approved: Infection Control Mgr. Date

Approved: Chief Security Date

Approved: A.F.G.E. Date

Approved: Interior Designer Date

Approved: Info. Sys. Date

Approved: Women's Health Rep Date

Approved: Fire Chief Date

Approved: Safety Officer Date

Approved: Industrial Hygienist Date

Approved: Space Owner Date

Approved: Energy Engineer Date

Approved: M&R Foreman Date

Date

Date

Drawing Title

FINISH PLAN

Approved: Eng. Project Supervisor Date

Approved: Medical Center Director Date

Project Title
**RENOVATE LIBRARY
FOR RESPIRATORY**

Building No.
76

Location
BATH, NEW YORK

Checked
ABL

Drawn
KMY

Date
04/01/2013

Project No.
528A6-12-608

DRAWING NO.
VAMC-528A6-12-608

AF101
Dwg. Of

V.A.