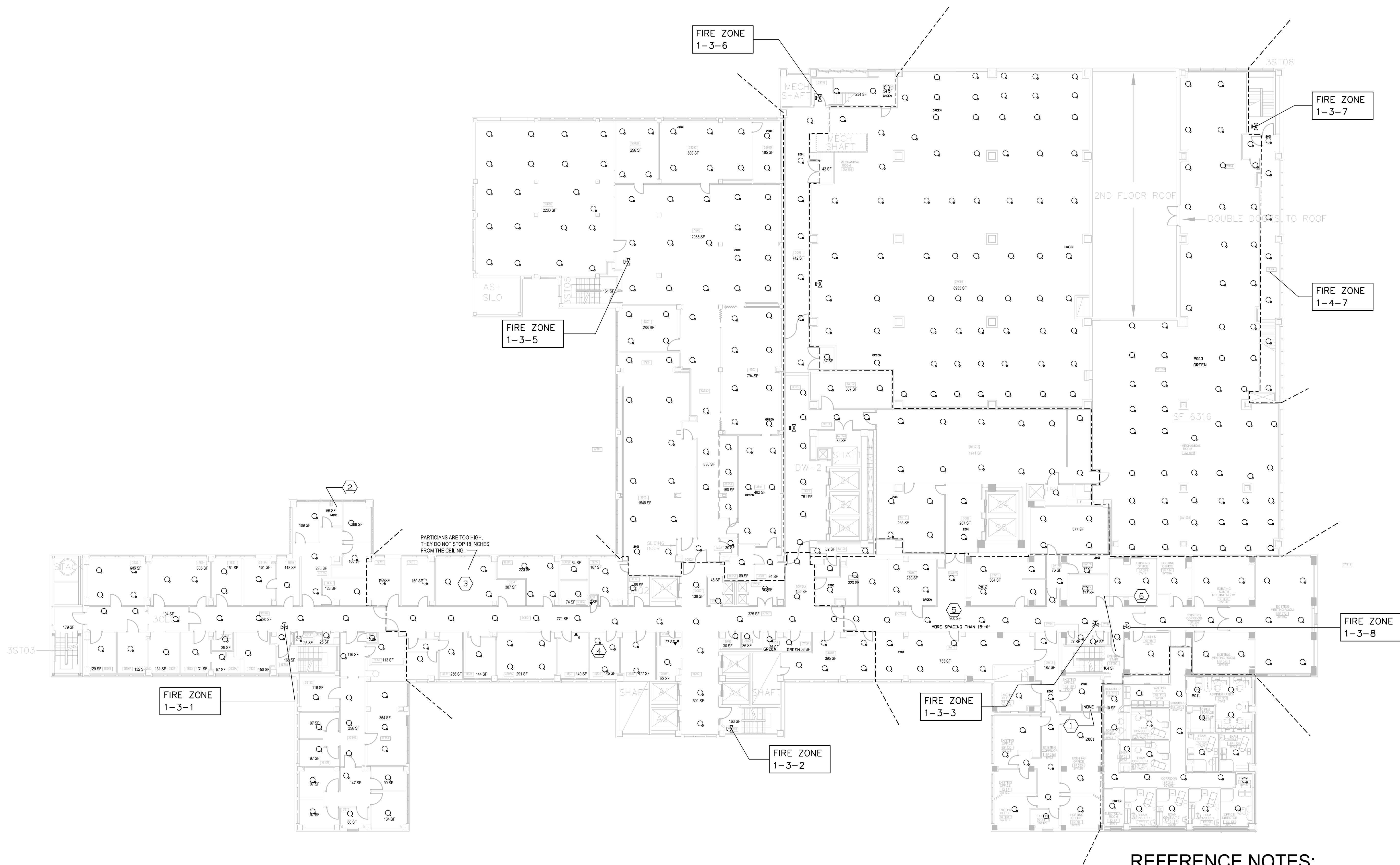
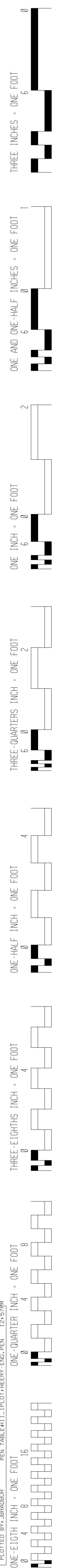
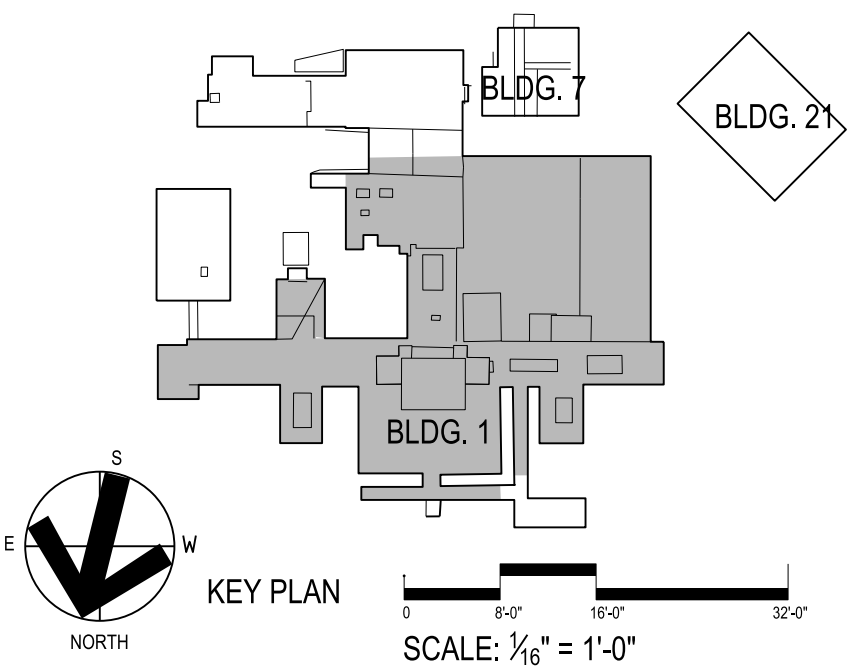


PROJECT: IC-VAMC-EXPAND BLDG. FOR PACT PROJECT  
SHEET TITLE: PACT INT'L-1125505-COND'L-F4-1125505-1AC.DWG  
PLOTTER: HP-5000-3 PLOT: HP-5000-3 PLOT: HP-5000-3



REFERENCE NOTES:

1. INSTALL SPRINKLER HEAD IN CLOSET IN ROOM 3W12G. THIS ROOM PRESENTLY DOES NOT HAVE A SPRINKLER HEAD.
2. ADD QUICK RESPONSE (RED COLOR BULB) TO ROOM WHICH HAS NONE ARE PRESENT.
3. ROOM PARTITIONS ARE WITH 18 INCHES OF CEILING AND WILL PREVENT THE ROOM SPRINKLER FOR ADEQUATE COVERAGE. ADD MORE SPRINKLER HEADS AND LOCATE THE HEADS TO COVER EACH OF THE ENCLOSED AREAS.
4. SPRINKLER HEADS ARE WITHIN THE 6'-0" MINIMUM SPACING. REMOVE SPRINKLER HEAD AND CAP ABOVE CEILING IN HORIZONTAL PIPE LEG.
5. SPACING BETWEEN SPRINKLER HEADS IS GREATER THAN THE NFPA 13 15'-0" LIMIT. ADD AN ADDITIONAL SPRINKLER HEAD. REPLACE THE EXTENDED COVERAGE SPRINKLER HEADS USED IN THIS SPACING THAT IS MORE THAN 15'-0".
6. REPLACE THE TEST AND DRAIN VALVE FOR ZONES 1-3-3 AND 1-3-8.



REVISIONS	DATE	REVISIONS	DATE	REVISIONS	DATE

VA FORM 08-6231, FEB. 1983



Heery International Inc.  
125 South Dubuque Street,  
Suite 500,  
Iowa City, IA 52240-4003  
319-354-4700

project number  
11-25505

DRAWING TITLE <b>FIRE SPRINKLER PLAN LEVEL 3</b>

PROJECT TITLE <b>REPLACE SPRINKLER HEADS</b>
BUILDING NO. <b>BLDG 1</b>
CHECKED <b>JMB</b>
DRAWN <b>JMB</b>
LOCATION <b>ICVA HEALTH CARE SYSTEM</b>

DATE <b>05/21/2013</b>
PROJECT NO. <b>636A8-13-001</b>
DRAWING NO. <b>1-F4</b>
DWG. 5 OF 9

