

PROJECT: IC-VAMC-EXPAND BLDG. FOR PACT PROJECT
SHEET TITLE: PACT PLAN L1-125505-CA001-F3-1125505-1AC.DWG
PLOT FILE: PACT-125505-CA001-F3-1125505-1AC.DWG
PLOT DATE: 05/21/2013 12:02 PM
PLOT BY: JMB

ONE-EIGHTH INCH - ONE FOOT
ONE-FOURTH INCH - ONE FOOT
ONE-HALF INCH - ONE FOOT
THREE-EIGHTHS INCH - ONE FOOT
THREE-QUARTERS INCH - ONE FOOT
ONE INCH - ONE FOOT
ONE AND ONE-HALF INCHES - ONE FOOT
THREE INCHES - ONE FOOT

REVISIONS

DATE

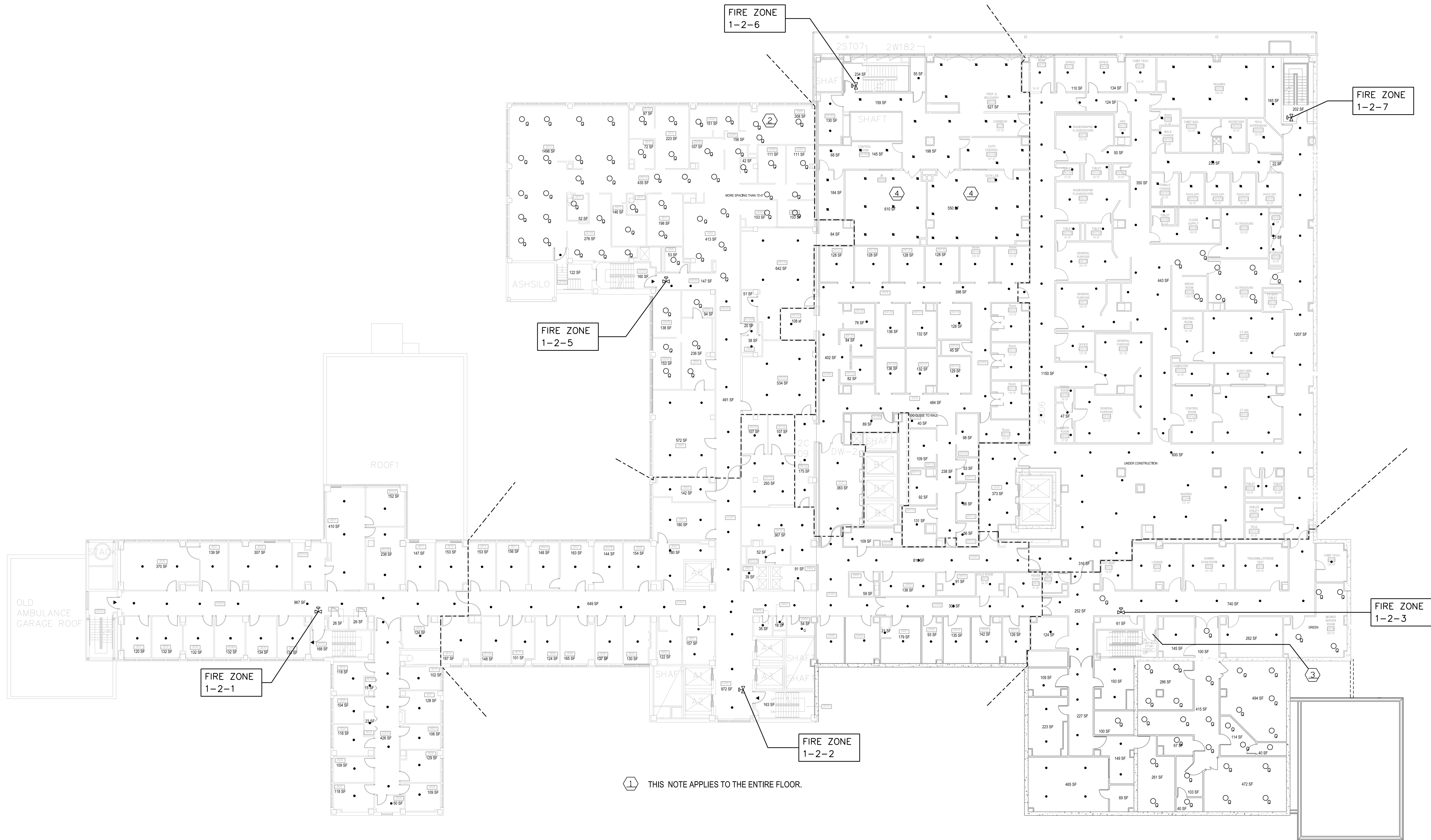
REVISIONS

DATE

REVISIONS

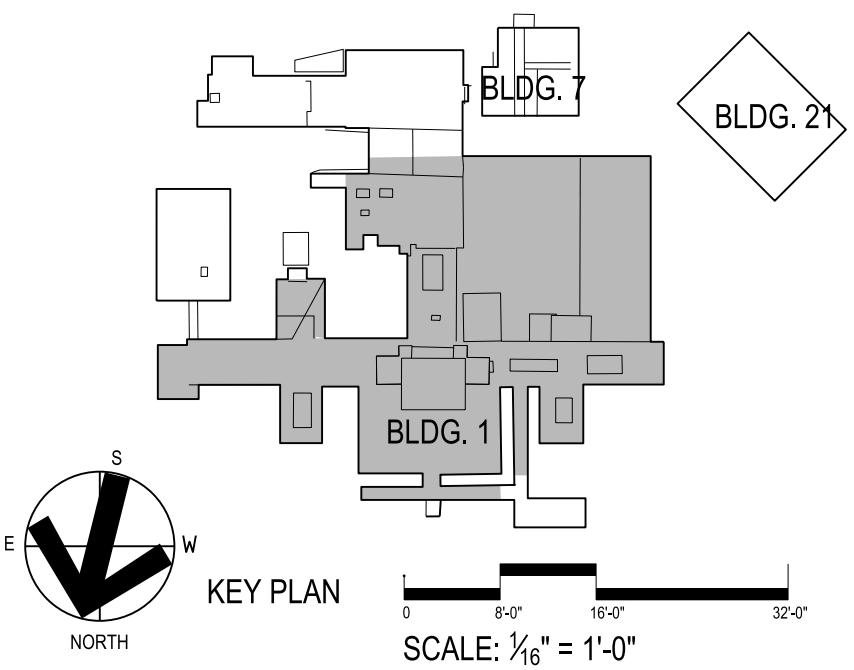
DATE

VA FORM 08-6231, FEB. 1983



REFERENCE NOTES:

- 1 CHANGE OUT THE SPRINKLER HEAD FOR NEW QUICK RESPONSE SPRINKLER HEAD (RED GLASS BULB COLOR). THIS REFERS TO ALL THE SPRINKLERS ON THIS LEVEL EXCEPT WHERE THE PLAN ALREADY INDICATES A "Q" NEXT TO THE HEAD OR A DIFFERENT REFERENCE NOTE COVERS THE AREA.
- 2 TWO SPRINKLER HEADS IN ROOM 3S09 ARE WITHIN THE 6'-0" REQUIRED SEPARATION DISTANCE. CAP ONE OF THE SPRINKLER HEADS AS THE ROOM DOES NOT NEED THREE HEADS TO PROPERLY COVER THE AREA.
- 3 REPLACE THE TEST AND DRAIN VALVE FOR ZONE 1-2-3.
- 4 WORK IN THESE ROOMS SHALL ONLY BE SCHEDULED WHEN THE VA STAFF HAVE COORDINATED A DAY WHERE THERE WILL BE NO PATIENT VISITS TO EITHER THE RF OR CATH LAB AND ADJOINING AREA.



HEERY

Heery International Inc.
125 South Dubuque Street,
Suite 500,
Iowa City, IA 52240-4003
319-354-4700

project number
11-25505

DRAWING TITLE
FIRE SPRINKLER PLAN
LEVEL 2

BUILDING NO.
BLDG 1

CHECKED
JMB

DRAWN
JMB

LOCATION
ICVA HEALTH CARE SYSTEM

PROJECT TITLE
REPLACE SPRINKLER HEADS

DATE
05/21/2013

PROJECT NO.
636A8-13-001

DRAWING NO.
1-F3

DWG. 4

OF 9

OFFICE OF FACILITIES

DEPARTMENT OF VETERANS AFFAIRS