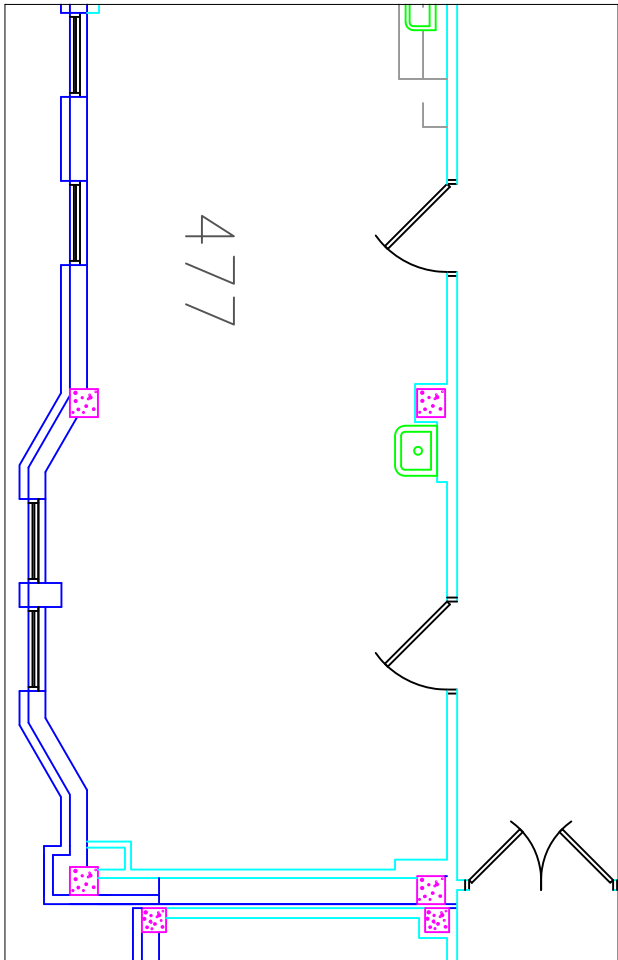
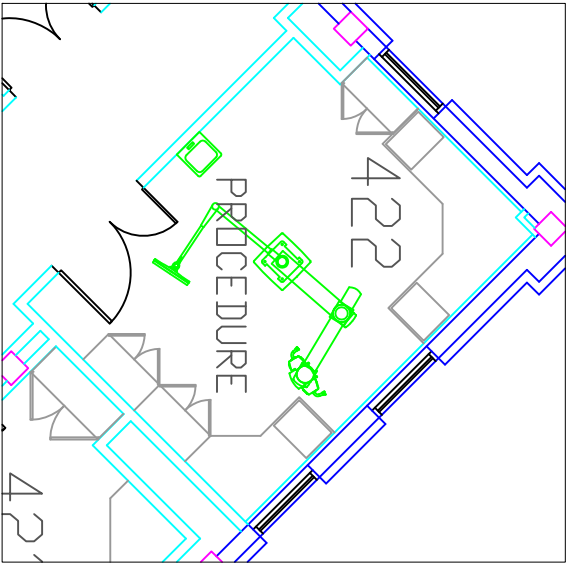


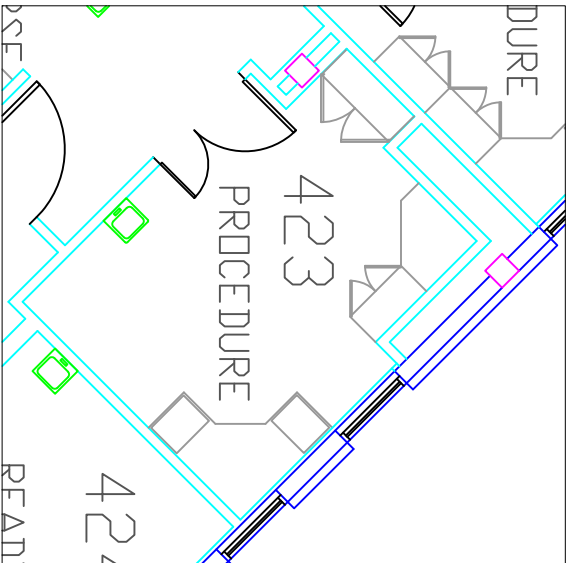
C3 RM 465 - PODIATRY EXAM ROOM
1/8" = 1'-0"



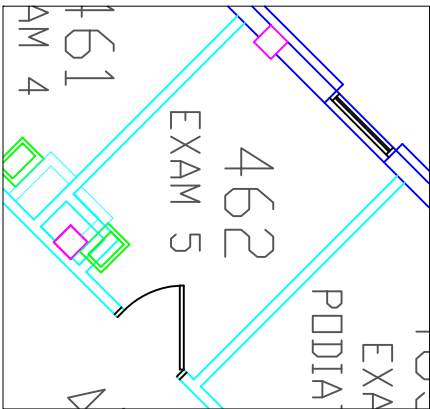
C6 RM 477 BAY 8 - SAME DAY SURGERY
1/8" = 1'-0"



F1 RM 422 - ENDO PROCEDURE ROOM
1/8" = 1'-0"



F3 RM 423 - ENDO PROCEDURE ROOM
1/8" = 1'-0"



F6 RM 462 - CLINIC EXAM ROOM
1/8" = 1'-0"
