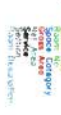


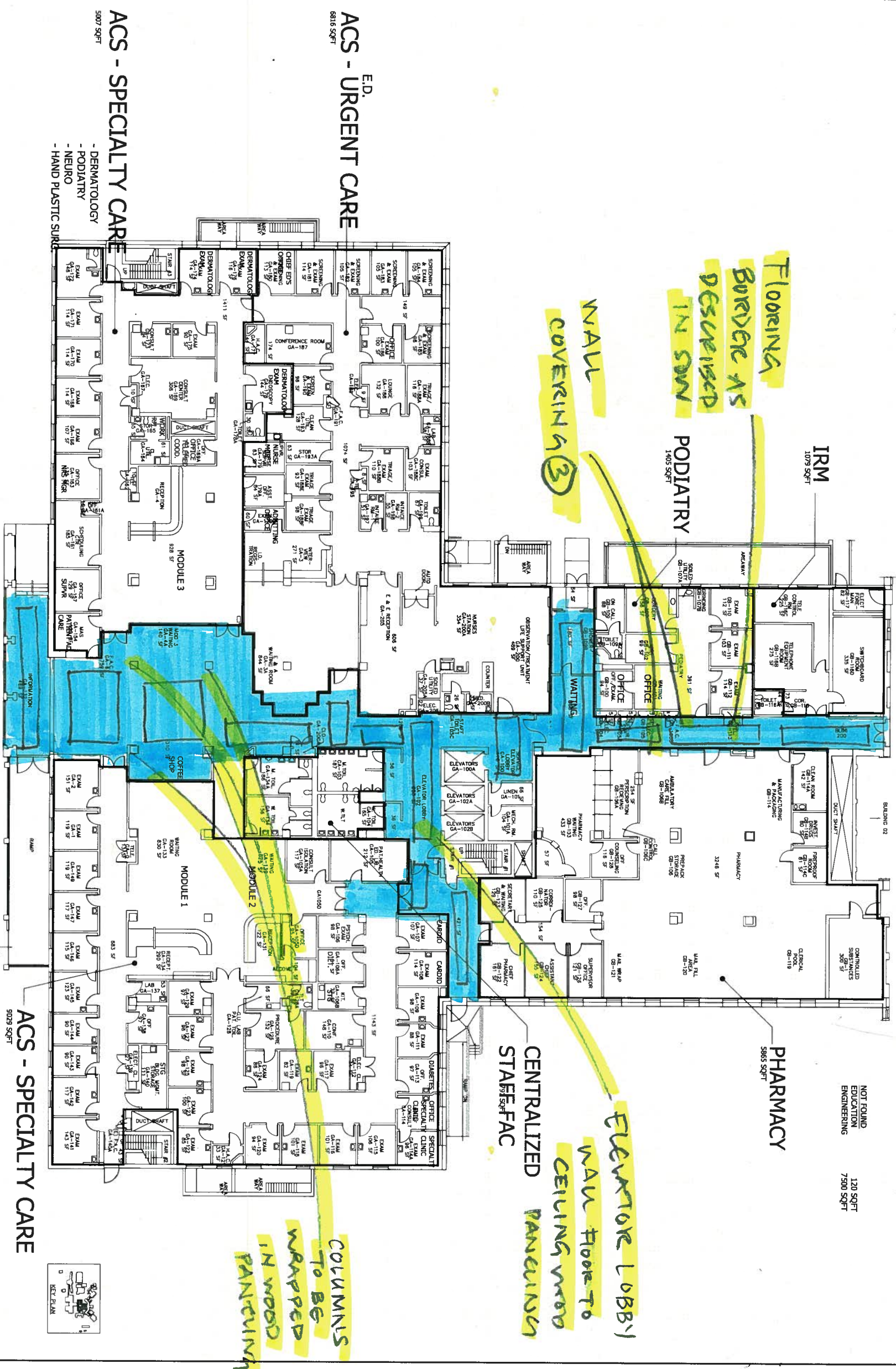
Site: San Francisco, Building: Building 02, Floor: 06

| Hatch Pattern        | Service  | Area Sq. Ft. |
|----------------------|--|--------------|
| [Solid Yellow]       | 04/136 - Central Business Office               | 767.68       |
| [Solid Blue]         | 133 - Content Service                          | 199.92       |
| [Solid Red]          | 138 - Engineering Service                      | 1,466.84     |
| [Solid Green]        | 137 - Environmental Management Service         | 212.18       |
| [Solid Brown]        | RMS - Information Resources Management Service | 914.66       |
| [Solid Light Green]  | 111 - Medical Service                          | 809.20       |
| [Solid Light Blue]   | 119 - Pharmacy Service                         | 1,591.71     |
| [Solid Light Yellow] | 078 - Police Service                           | 181.46       |
| [Solid Light Green]  | 151 - Med Research/Dev                         | 2,370.93     |
| [Solid Light Blue]   | 122 - Social Work Service                      | 875.06       |
| [Solid Light Yellow] | 112 - Surgical Service                         | 165.78       |
| [Solid Light Green]  | 135 - Voluntary Service                        | 231.12       |
| [Solid Light Blue]   | Centralized Staff Foc                          | 98.97        |
| [Solid Light Yellow] | Tenant   | 890.91       |
| [Solid Light Green]  | 04 - Vertical Space                            | 1282.55      |
| [Solid Light Blue]   | 03 - Floor Common                              | 2763.6       |

Space Data Display Order







Revisions

Date \_\_\_\_\_

Professional Sec



**Indus Systems, Inc.**  
2352, Main Street, Concord MA 01742  
Tel: 978-461-0555  
[www.indus-systems.com](http://www.indus-systems.com)

GROUND FLOOR PLAN  
ARCHITECTURAL

## AS-BUILT Drawings

07-07-2008

Drown

No.



The logo for the Veterans Affairs Medical Center (VAMC) in San Francisco. It features a stylized, abstract design with a central circular element and a banner-like shape containing the text "VAMC, SAN FRANCISCO". The design is composed of various geometric shapes and patterns, including a large, dark, textured area on the left and a lighter, patterned area on the right.

VA Department of  
Veterans Affairs