

# 1 SOUTH ELEVATION - DEMOLITION & REPAIR SCALE: 1/8" = 1'-0"

ISSUED BY:



ASHLAND, WI  
211 6TH STREET WEST  
ASHLAND, WI 54806  
PHONE: (715) 682-6004  
FAX: (715) 682-6025  
MILWAUKEE, WI  
933 N. MAYFAIR RD.,  
SUITE 109  
MILWAUKEE, WI 53226  
PHONE: (414) 258-6004  
FAX: (414) 258-6154



Dept. of Veterans Affairs  
Medical Center  
5000 W. National Avenue  
Milwaukee, WI

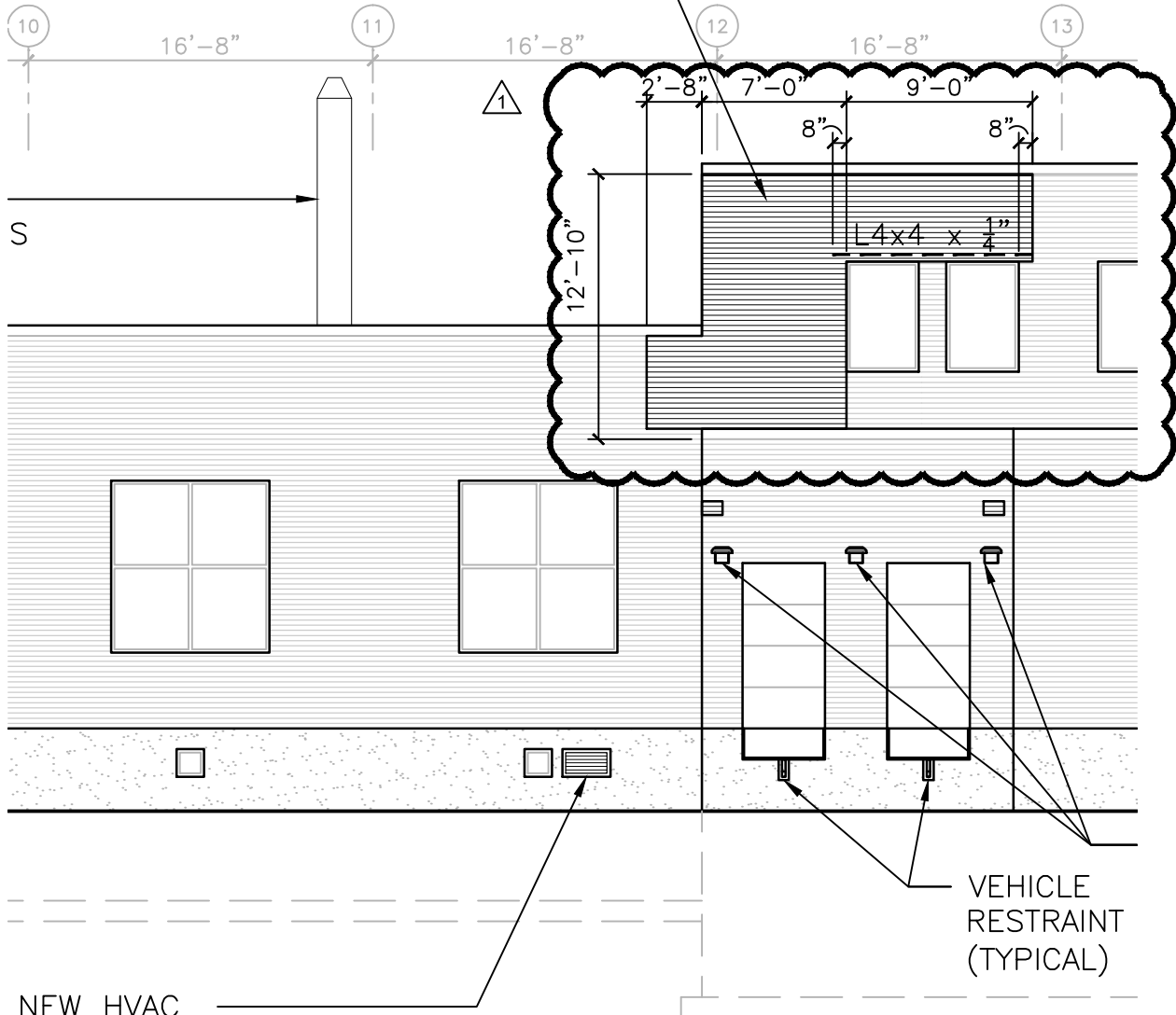
Issued For: Amendment No. 1

Reference Drawing No: **AD401**

Issue Date: 24 May 2013

Project Name: 102 111 Expand SPS  
Project No.: 695-13-131

PROVIDE NEW BRICK VENEER WHERE EXISTING BRICK VENEER HAS BEEN REMOVED. NEW BRICK TO MATCH EXISTING.



**1 SOUTH ELEVATION - NEW CONSTRUCTION**  
SCALE: 1/8" = 1'-0"

ISSUED BY:



**CHEQUAMEGON BAY  
ENGINEERING, INC.**

©CBE 2002-2013

ASHLAND, WI  
211 6TH STREET WEST  
ASHLAND, WI 54806  
PHONE: (715) 682-6004  
FAX: (715) 682-6025  
MILWAUKEE, WI  
933 N. MAYFAIR RD.,  
SUITE 109  
MILWAUKEE, WI 53226  
PHONE: (414) 258-6004  
FAX: (414) 258-6154



Dept. of Veterans Affairs  
Medical Center  
5000 W. National Avenue  
Milwaukee, WI

Issued For: Amendment No. 1

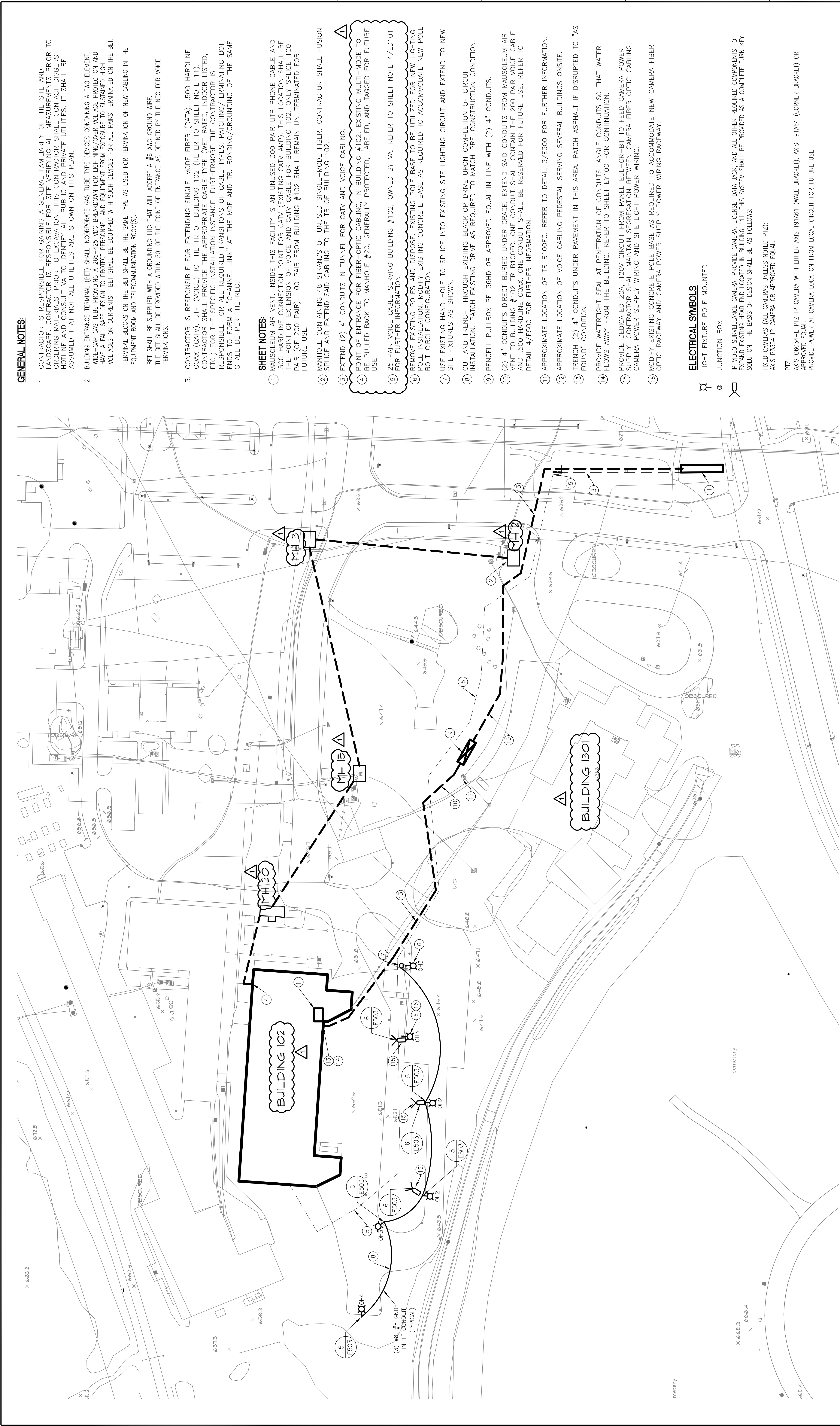


Reference Drawing No: **AS401**

Issue Date: 24 May 2013

Project Name: 102 111 Expand SPS  
Project No.: 695-13-131





ELECTRICAL SITE PLAN  
SCALE: 1" = 40'-0"

GENERAL NOTES:

- CONTRACTOR IS RESPONSIBLE FOR GAINING A GENERAL FAMILIARITY OF THE SITE AND LANDSCAPE. CONTRACTOR IS RESPONSIBLE FOR SITE VERIFYING ALL MEASUREMENTS PRIOR TO ORDERING MATERIALS. PRIOR TO EXCAVATION, THIS CONTRACTOR SHALL CONTACT DIGGERS HOTLINE AND CONSULT VA TO IDENTIFY ALL PUBLIC AND PRIVATE UTILITIES. IT SHALL BE ASSUMED THAT NOT ALL UTILITIES ARE SHOWN ON THIS PLAN.
- BUILDING ENTRANCE TERMINAL (BET) SHALL INCORPORATE GAS TUBE TYPE DEVICES CONTAINING A TWO ELEMENT, WIDE-GAP GAS TUBE DESIGN A 285-425 VDC BREAKDOWN FOR LIGHTNING/OVER VOLTAGE PROTECTION AND HAVE A FAIL-SAFE DESIGN TO PROTECT PERSONNEL AND EQUIPMENT FROM EXPOSURE TO SUSTAINED HIGH VOLTAGES OR CURRENTS. BET SHALL BE EQUIPPED WITH SUCH DEVICES FOR ALL PAINS TERMINATED ON THE BET. TERMINAL BLOCKS ON THE BET SHALL BE THE SAME TYPE AS USED FOR TERMINATION OF NEW CABLING IN THE EQUIPMENT ROOM AND TELECOMMUNICATION ROOM(S).  
BET SHALL BE SUPPLIED WITH A GROUNDING LUG THAT WILL ACCEPT A #6 AWG GROUND WIRE.  
THE BET SHALL BE PROVIDED WITHIN 50' OF THE POINT OF ENTRANCE AS DEFINED BY THE NEC FOR VOICE TERMINATIONS.
- CONTRACTOR IS RESPONSIBLE FOR EXTENDING SINGLE-MODE FIBER (DATA), .500 HARDLINE COAX (CATV), UTP (VOICE) TO THE TR OF BUILDING 102 (REFER TO SHEET NOTE 11). CONTRACTOR SHALL PROVIDE THE APPROPRIATE CABLE TYPE (WET RATED, INDOOR LISTED, ETC.) FOR THE SPECIFIC INSTALLATION INSTANCE. FURTHERMORE THE CONTRACTOR IS RESPONSIBLE FOR ALL REQUIRED TRANSITIONS OF CABLE TYPES, PATCHING/TERMINATING BOTH ENDS TO FORM A "CHANNEL LINK" AT THE MDF AND TR. BONDING/GROUNDING OF THE SAME SHALL BE PER THE NEC.

SHEET NOTES:

- MAUSOLEUM AIR VENT, INSIDE THIS FACILITY IS AN UNUSED 300 PAIR UTP PHONE CABLE AND .500 HARDLINE CONNECTION POINT FOR CATV (EXISTING CATV AMP). THIS LOCATION SHALL BE THE POINT OF EXTENSION OF VOICE AND CATV CABLE FOR BUILDING 102. ONLY SPUCE 100 PAIR (OF 200 PAIR). 100 PAIR FROM BUILDING #102 SHALL REMAIN UN--TERMINATED FOR FUTURE USE.
- MANHOLE CONTAINING 48 STRANDS OF UNUSED SINGLE-MODE FIBER. CONTRACTOR SHALL FUSION SPLICED AND EXTEND SAID CABLING TO THE TR OF BUILDING 102.
- EXTEND (2) 4" CONDUITS IN TUNNEL FOR CATV AND VOICE CABLING.
- POINT OF ENTRANCE FOR FIBER--OPTIC CABLING, IN BUILDING #102. EXISTING MULTI-MODE TO BE PULLED BACK TO MANHOLE #20. GENERALLY PROTECTED, LABELED, AND TAGGED FOR FUTURE USE.
- 25 PAIR VOICE CABLE SERVING BUILDING #102, OWNED BY VA. REFER TO SHEET NOTE 4/ED101 FOR FURTHER INFORMATION.
- REMOVE EXISTING POLES AND DISPOSE EXISTING POLE BASE TO BE UTILIZED FOR NEW LIGHTING POLE INSTALLATION. MODIFY EXISTING CONCRETE BASE AS REQUIRED TO ACCOMMODATE NEW POLE BOLT CIRCLE CONFIGURATION.
- USE EXISTING HAND HOLE TO SPLICE INTO EXISTING SITE LIGHTING CIRCUIT AND EXTEND TO NEW SITE FIXTURES AS SHOWN.
- CUT AND TRENCH THROUGH EXISTING BACKTOP DRIVE UPON COMPLETION OF CIRCUIT INSTALLATION. PATCH EXISTING DRIVE AS REQUIRED TO MATCH PRE-CONSTRUCTION CONDITION.
- PENCELL PULLBOX PE-36HD OR APPROVED EQUAL IN-LINE WITH (2) 4" CONDUITS.
- (2) 4" CONDUITS DIRECT BURIED UNDER GRADE. EXTEND SAID CONDUITS FROM MAUSOLEUM AIR VENT TO BUILDING #102 TR B100FC. ONE CONDUIT SHALL CONTAIN THE 200 PAIR VOICE CABLE AND .500 HARDLINE COAX. ONE CONDUIT SHALL BE RESERVED FOR FUTURE USE. REFER TO DETAIL 47/E500 FOR FURTHER INFORMATION.
- APPROXIMATE LOCATION OF TR B100FC. REFER TO DETAIL 3/E300 FOR FURTHER INFORMATION.
- APPROXIMATE LOCATION OF VOICE CABLING PEDESTAL SERVING SEVERAL BUILDINGS ONSITE.
- TRENCH (2) 4" CONDUITS UNDER PAVEMENT IN THIS AREA. PATCH ASPHALT IF DISRUPTED TO "AS FOUND" CONDITION.
- PROVIDE WATERTIGHT SEAL AT PENETRATION OF CONDUITS. ANGLE CONDUITS SO THAT WATER FLOWS AWAY FROM THE BUILDING. REFER TO SHEET EY100 FOR CONTINUATION.
- PROVIDE DEDICATED 20A, 120V CIRCUIT FROM PANEL EUL--GR-B1 TO FEED CAMERA POWER SUPPLY. CONTRACTOR SHALL MAINTAIN SEGREGATION BETWEEN CAMERA FIBER OPTIC CABLING, CAMERA POWER SUPPLY WIRING AND SITE LIGHT POWER WIRING.
- MODIFY EXISTING CONCRETE POLE BASE AS REQUIRED TO ACCOMMODATE NEW CAMERA FIBER OPTIC RACEWAY AND CAMERA POWER SUPPLY POWER WIRING RACEWAY.

ELECTRICAL SYMBOLS

LIGHT FIXTURE POLE MOUNTED






JUNCTION BOX

IP VIDEO SURVEILLANCE CAMERA. PROVIDE CAMERA, LICENSE, DATA JACK, AND ALL OTHER REQUIRED COMPONENTS TO EXPAND EXISTING HEAD END LOCATED IN BUILDING 111. THIS SYSTEM SHALL BE PROVIDED AS A COMPLETE TURN KEY SOLUTION. THE BASIS OF DESIGN SHALL BE AS FOLLOWS:

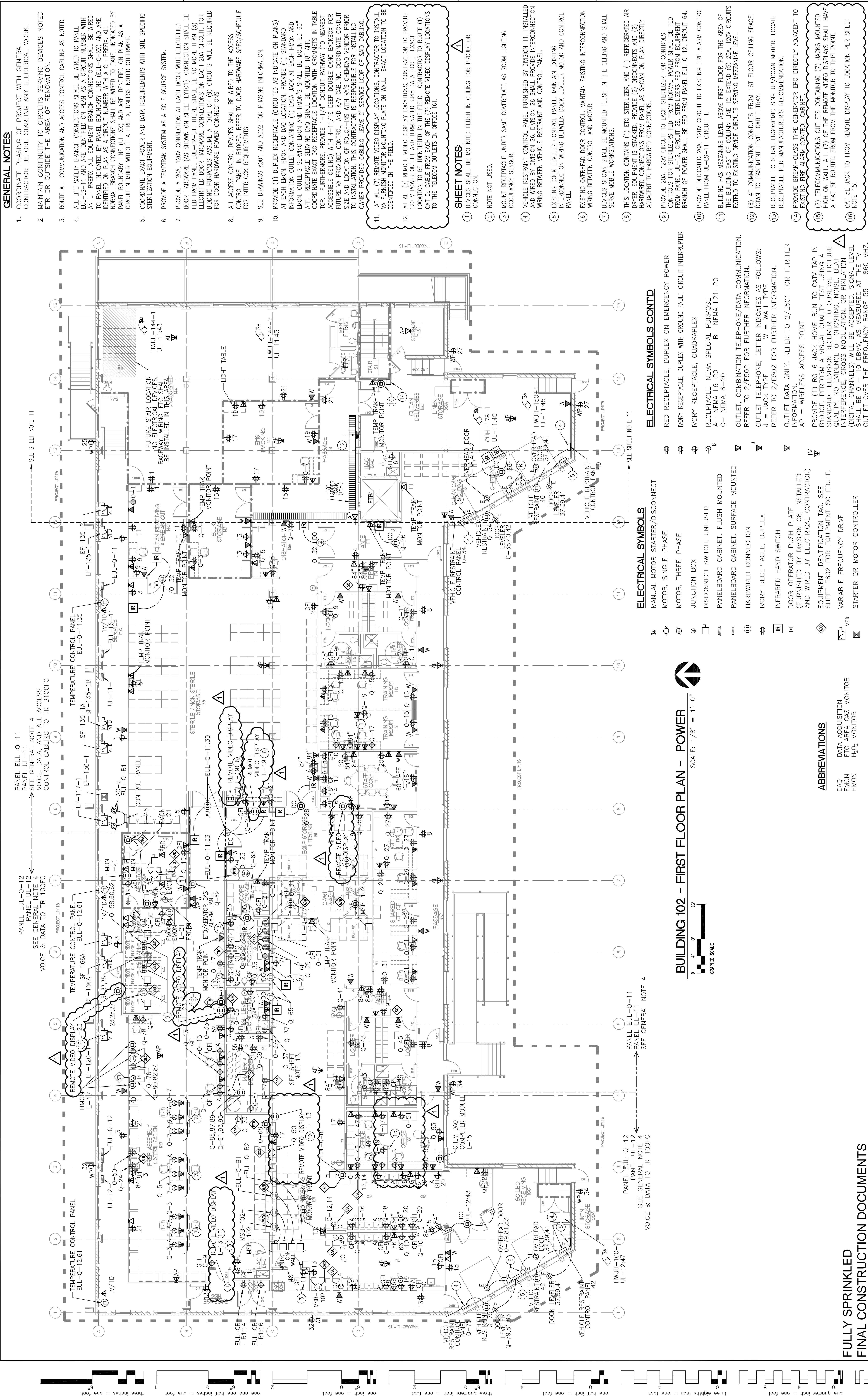
FIXED CAMERAS (ALL CAMERAS UNLESS NOTED PTZ):  
AXIS P3354 IP CAMERA OR APPROVED EQUAL.

PTZ:  
AXIS 06034-E PTZ IP CAMERA WITH EITHER AXIS T91461 (WALL BRACKET), AXIS T91464 (CORNER BRACKET) OR APPROVED EQUAL.  
PROVIDE POWER AT CAMERA LOCATION FROM LOCAL CIRCUIT FOR FUTURE USE.

FULLY SPRINKLED  
FINAL CONSTRUCTION DOCUMENTS

Amendment No. 1		05/24/13		 Dept. of Veterans Affairs Medical Center 5000 W. National Avenue Milwaukee, WI				CONSULTANTS:		 <b>ARNOLD AND O'SHERIDAN INC</b> CONSULTING ENGINEERS 1000 W. NATIONAL AVENUE MILWAUKEE, WI 53233 TEL: 414-224-0604 FAX: 414-224-0604 WWW.ARNOLDANDSHERIDAN.COM		 <b>CHEQUAMEGON BAY ENGINEERING, INC.</b> 3001 W. NATIONAL MILWAUKEE, WI 53233 TEL: 414-224-0604 FAX: 414-224-0604 WWW.CHEQUAMEGONBAYENGINEERING.COM		PROJECT LEADER/STRUCTURAL ENGINEER:		Drawing Title <b>ELECTRICAL SITE PLAN</b>		Project Title <b>102 111 Expand SPS</b>		Project Number <b>695-13-131</b>		Office of Facilities Management		 Department of Veterans Affairs	
Revisions:		Date						Approved: Project Director						Location <b>VA Medical Center, Milwaukee, WI</b>		Checked By: <b>AHO</b>		Drawn By: <b>AHO</b>		Building Number <b>102</b>		Drawing Number <b>E002</b>			





Amendment No. 1

05/24/13

REVISIONS:

DATE

Dept. of Veterans Affairs  
Medical Center  
5000 W. National Avenue  
Milwaukee, WI

CONSULTANTS:

**ARNOLD AND SHERIDAN INC.**  
CONSULTING ENGINEERS  
MADISON, WISCONSIN  
BROOKFIELD, WISCONSIN  
WWW.ARNOLDSHERIDAN.COM

**CHEQUAMEGON BAY ENGINEERING, INC.**  
© 2011 PENDING  
MILWAUKEE, WI  
3033 MAYFIELD RD.  
MILWAUKEE, WI 53208  
TEL: 414.381.0104  
FAX: 414.381.0104

PROJECT LEADER/STRUCTURAL ENGINEER:

**ASHLAND, WI**  
2000 WISCONSIN STREET  
ASHLAND, WI 54806  
TEL: 715.253.2222  
FAX: 715.253.2222

**CHEQUAMEGON BAY ENGINEERING, INC.**  
© 2011 PENDING  
MILWAUKEE, WI  
3033 MAYFIELD RD.  
MILWAUKEE, WI 53208  
TEL: 414.381.0104  
FAX: 414.381.0104

PROJECT TITLE

102 111 Expand SPS

PROJECT NUMBER

695-13-131

BUILDING NUMBER

102

DRAWING NUMBER

EPI01

OFFICE OF FACILITIES MANAGEMENT

DEPARTMENT OF VETERANS AFFAIRS