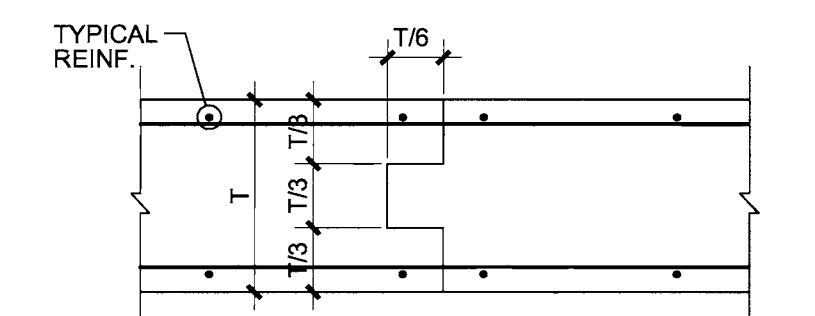
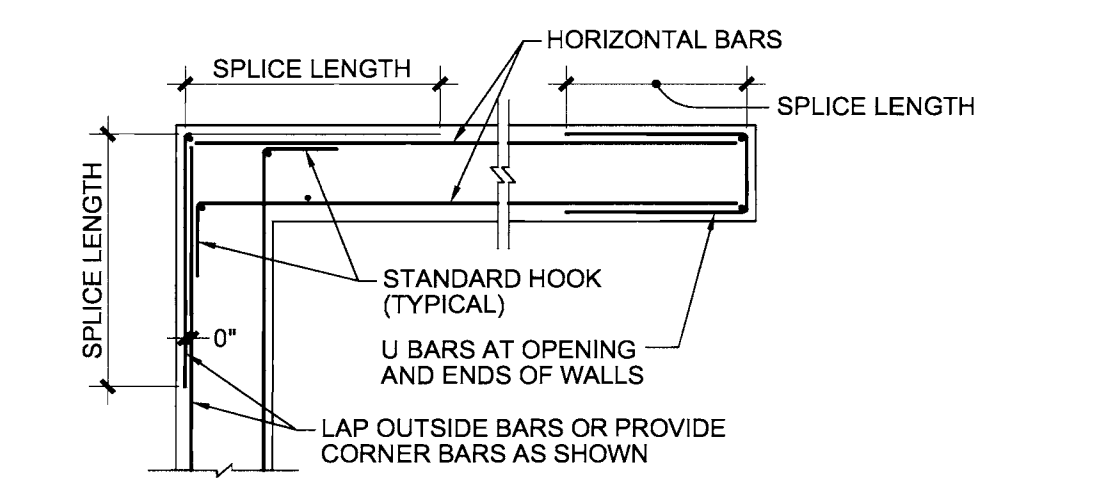
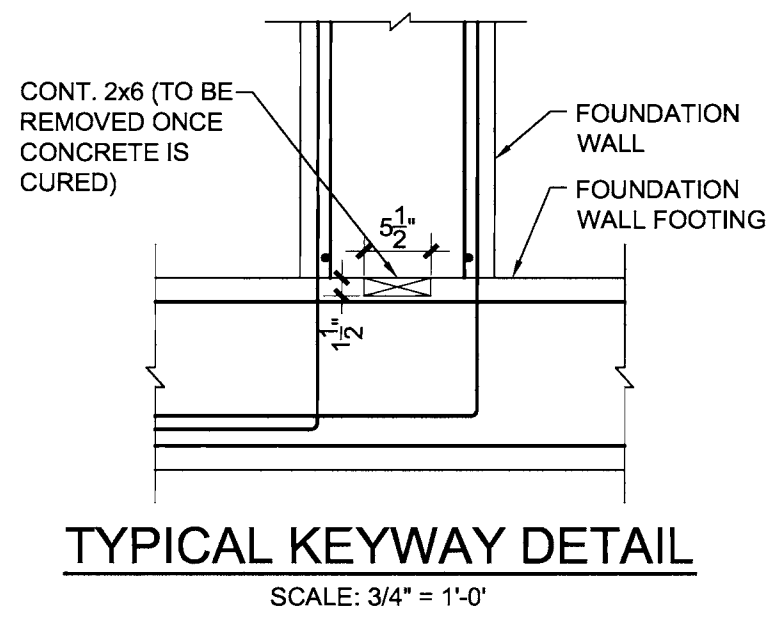
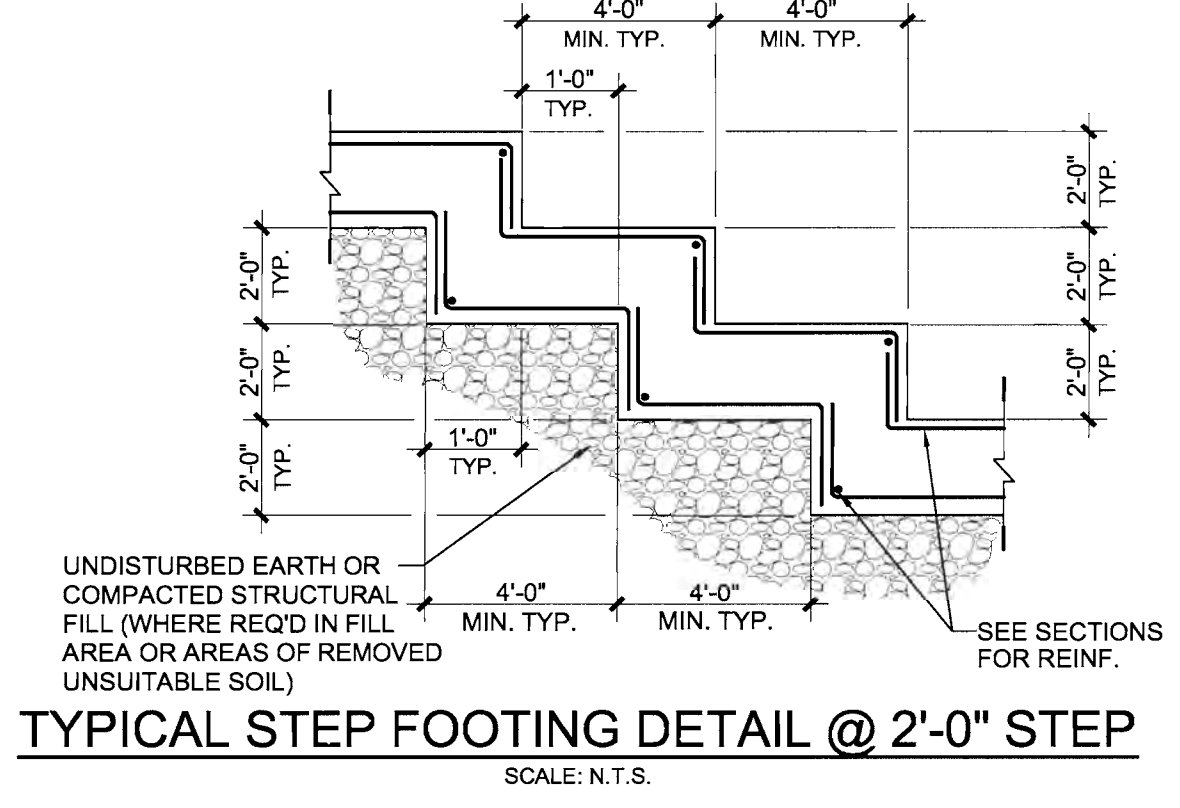
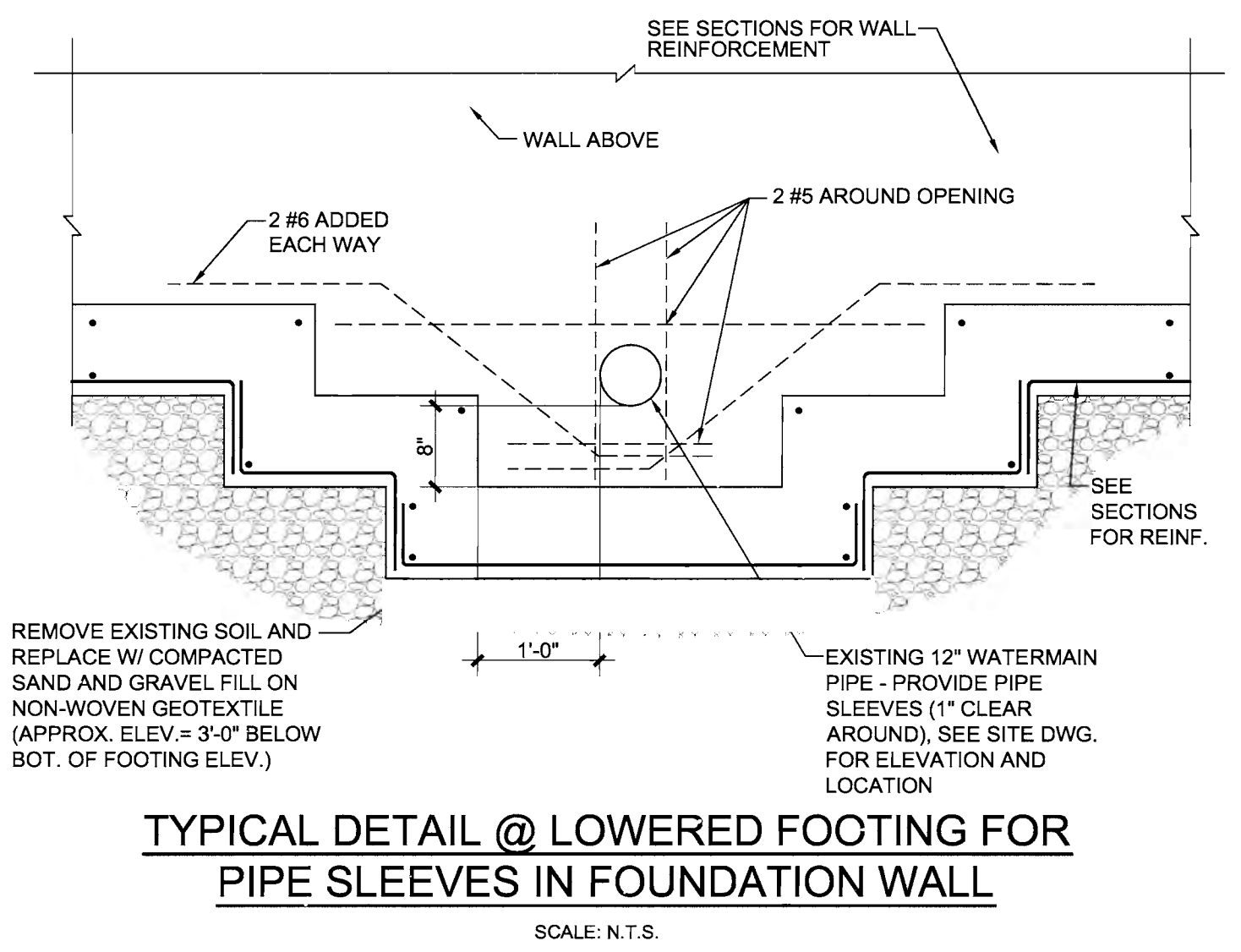
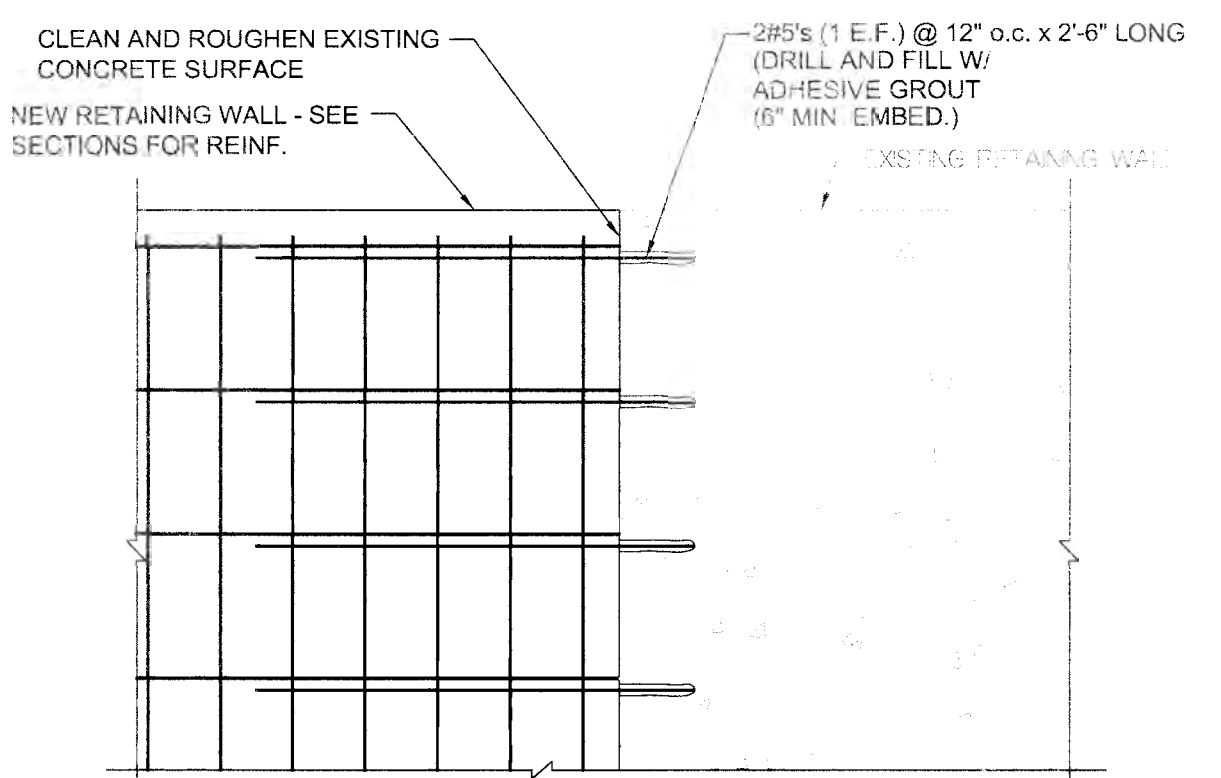


three inches = one foot
one and one half inches = one foot
one inch = one foot
three eighths inch = one foot
one half inch = one foot
three eighths inch = one foot
one quarter inch = one foot
one eighth inch = one foot



MINIMUM REINFORCING STEEL SPLICE LENGTHS SCHEDULE		
BAR SIZE	SPLICE LENGTH (INCHES)	
	CLASS B (BARS OTHER THAN TOP BARS)	TOP BARS
#3	19	25
#4	25	33
#5	31	40
#6	37	48
#7	54	70
#8	62	81
#9	70	91
#10	79	103

NOTE: IF THE CLEAR SPACING BETWEEN BARS IS LESS THAN 3 BAR DIAMETERS OR IF THE COVER IS LESS THAN 2 BAR DIAMETERS, INCREASE THE SPLICE LENGTH BY 50%.



TYPICAL NEW WALL TO EXISTING WALL DETAIL (ELEVATION)
SCALE: 3/4" = 1'-0"

GENERAL NOTES

A- CODES:

- 1) AMERICAN CONCRETE INSTITUTE (A.C.I.)
- 2) CONCRETE REINFORCING STEEL INSTITUTE (C.R.S.I.)

B- CONCRETE:

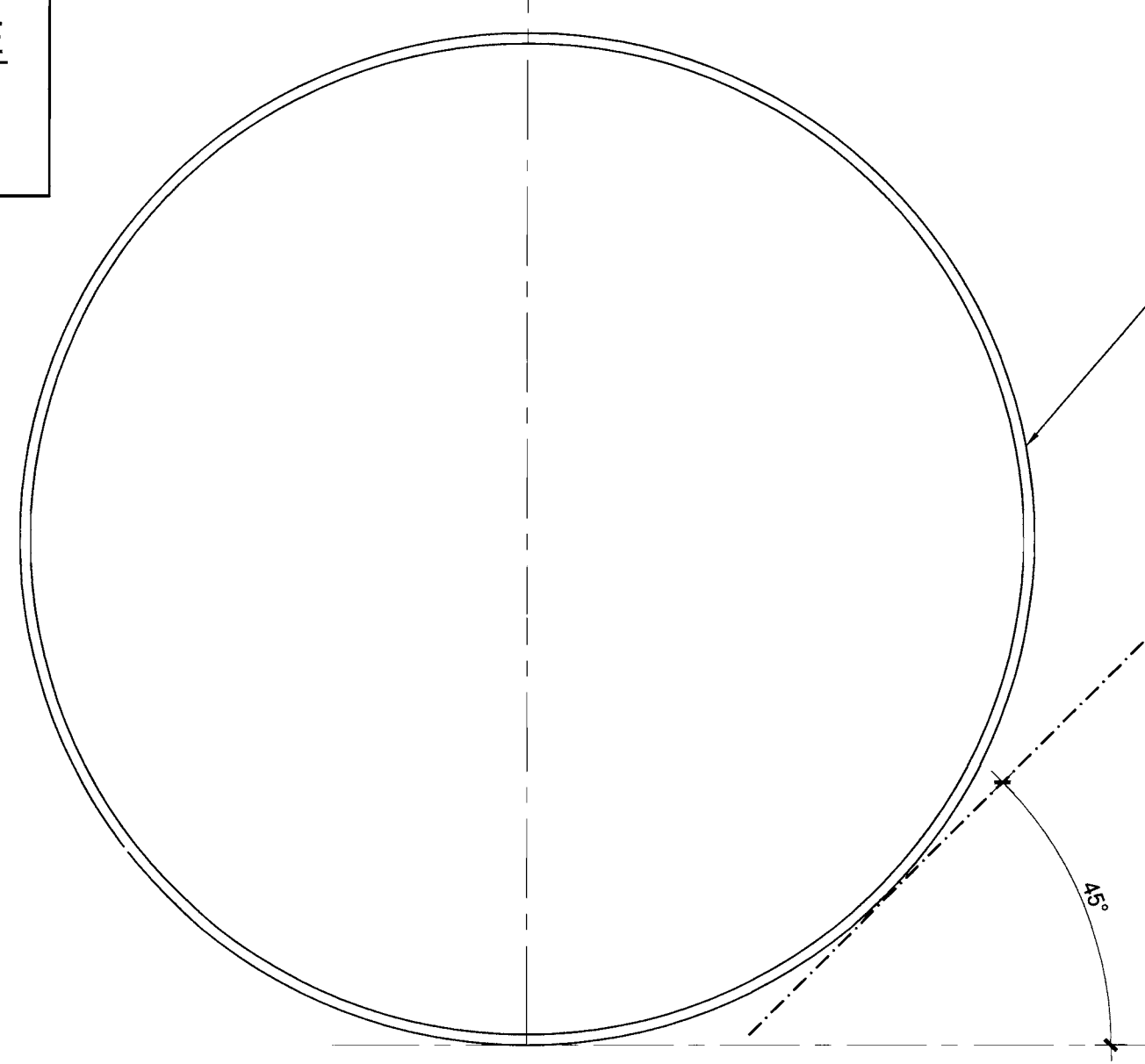
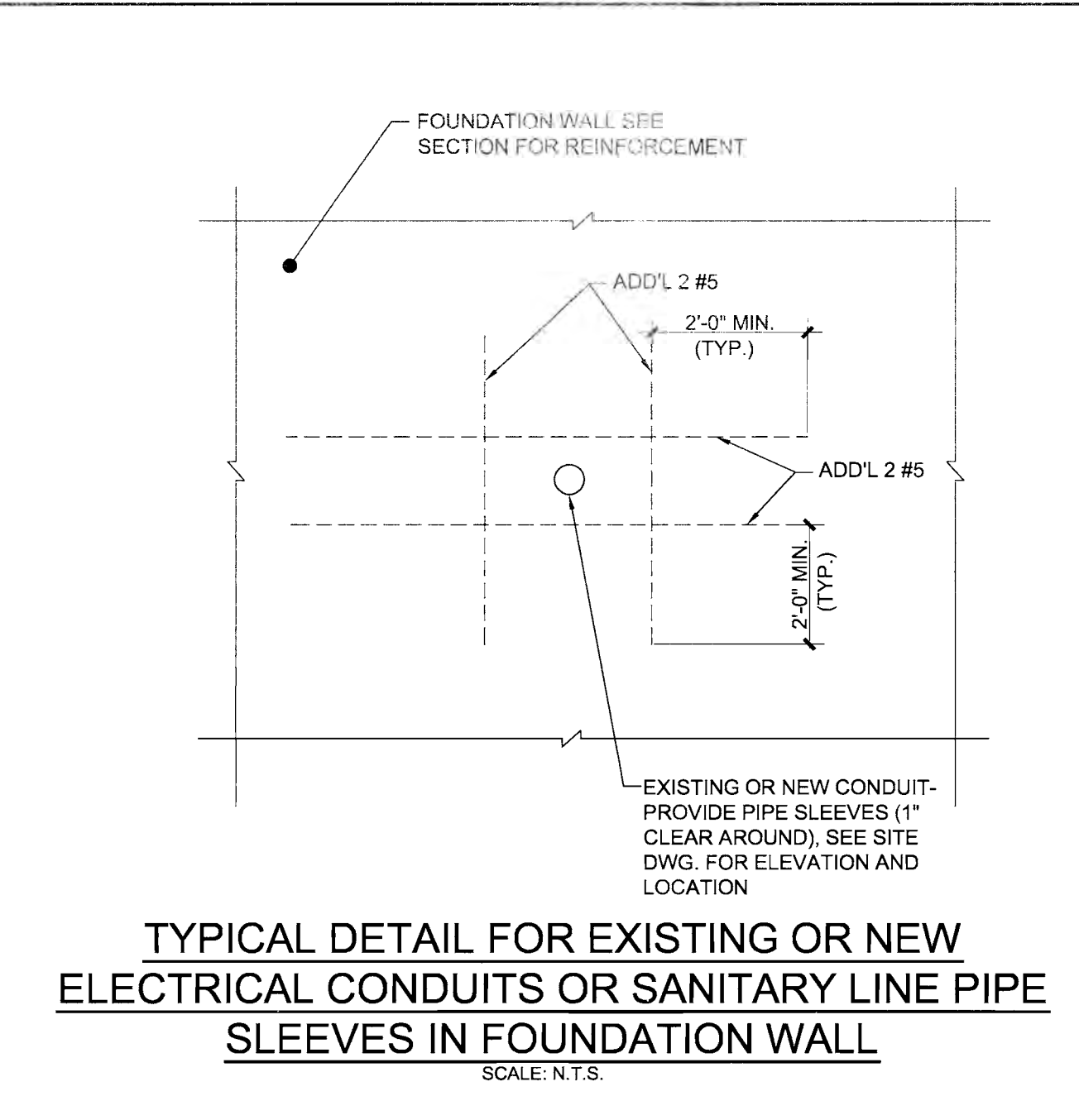
- 1) ALL CONCRETE TO BE 3,000 PSI @ 28 DAYS.
- 2) CONCRETE WORK TO CONFORM TO ACI-318 CODE, LATEST EDITION.
- 3) ALL CONCRETE TO BE STONE CONCRETE.
- 4) EXTERIOR RETAINING WALL FOOTINGS TO BE CARRIED 4'-0" MINIMUM BELOW FINISHED GRADE.

C- CONCRETE REINFORCEMENT:

- 1) CONCRETE REINFORCING TO BE F_y=24,000 PSI BILLET STEEL, GRADE 60.
- 2) REINFORCING STEEL PROTECTION TO BE AS FOLLOWS:
FOOTINGS _____ 3"
WALLS & BEAMS _____ 2"
- 3) REINFORCING BARS TO BE LAPPED AS PER SPLICE LENGTH SCHEDULE.

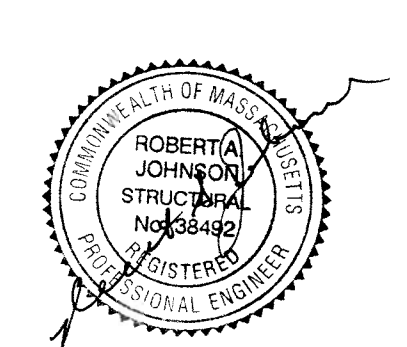
D- MISCELLANEOUS ITEMS:

- 1) EXISTING SOIL (FILL) TO BE REMOVED TO DEPTH OF 3'-0" BELOW BOTTOM OF FOOTING AND REPLACED WITH COMPACTED SAND AND GRAVEL ON CRUSHED WHERE GROUND WATER OCCURS. PLACE NON-WOVEN GOTEXTILE FABRIC PRIOR TO PLACEMENT OF ANY FILL (COORD. W/ THE GEOTECHNICAL REPORT).
- 2) SOIL BEARING PRESSURE = 4,000 PSF AS PER THE GEOTECHNICAL REPORT.
- 3) THE CONTRACTOR SHALL NOT POUR CONCRETE ON FROZEN GROUND. THE EXCAVATED SOIL SHALL BE PROTECTED BY MEANS OF HAYBALES OR HEATERS. SHOULD GROUNDWATER OR DRAINAGE WATER FILL THE EXCAVATED AREA, THE CONTRACTOR SHALL Dewater AS REQUIRED TO POUR THE FOOTINGS AND FOUNDATION WALL. ALL CONCRETE SHALL BE PROTECTED BY HAYBALES, BLANKETS, ETC. FROM TEMPERATURES BELOW FREEZING UNTIL THE CONCRETE HAS ACHIEVED 7 DAY STRENGTH.
- 4) SEE ARCH. DRAWINGS FOR ADDITIONAL WALL INFORMATION.



NOTES:
1.) INFORMATION OBTAINED FROM CITY OF ALBANY WATER DEPARTMENT.
2.) ELEVATIONS ARE REPRESENTATIVE FROM SITE PLAN GRADES.

Revisions	100% SUBMISSION	06/06/12
Date		



JSE
Johnson Structural Engineering, Inc.
30 Faith Avenue, Auburn, Massachusetts 01501
phone: (508) 832-3535 fax: (508) 832-3363

Architectural INSIGHTS, Inc
3 Cornett Street, Palmer, MA 01959
(413) 237-2522 fax: (413) 237-4953
e-mail: info@architecturalinsights.com

Drawing Title	SECTION, TYPICAL DETAILS AND GENERAL NOTES
APPROVED:	VAMC ENGINEERING MNGR OSCAR PRUE
APPROVED:	CHIEF, FACILITY SERVICE GLEN CYPHERS

Project Title		
RETAINING WALL REPLACEMENT LOADING DOCK AT LAUNDRY		
Building No.	Checked RAJ	Drawn RP
Location ALBANY, NY		

Date	06/05/12
Project No.	52848-10-809
DRAWING NO.	S103

