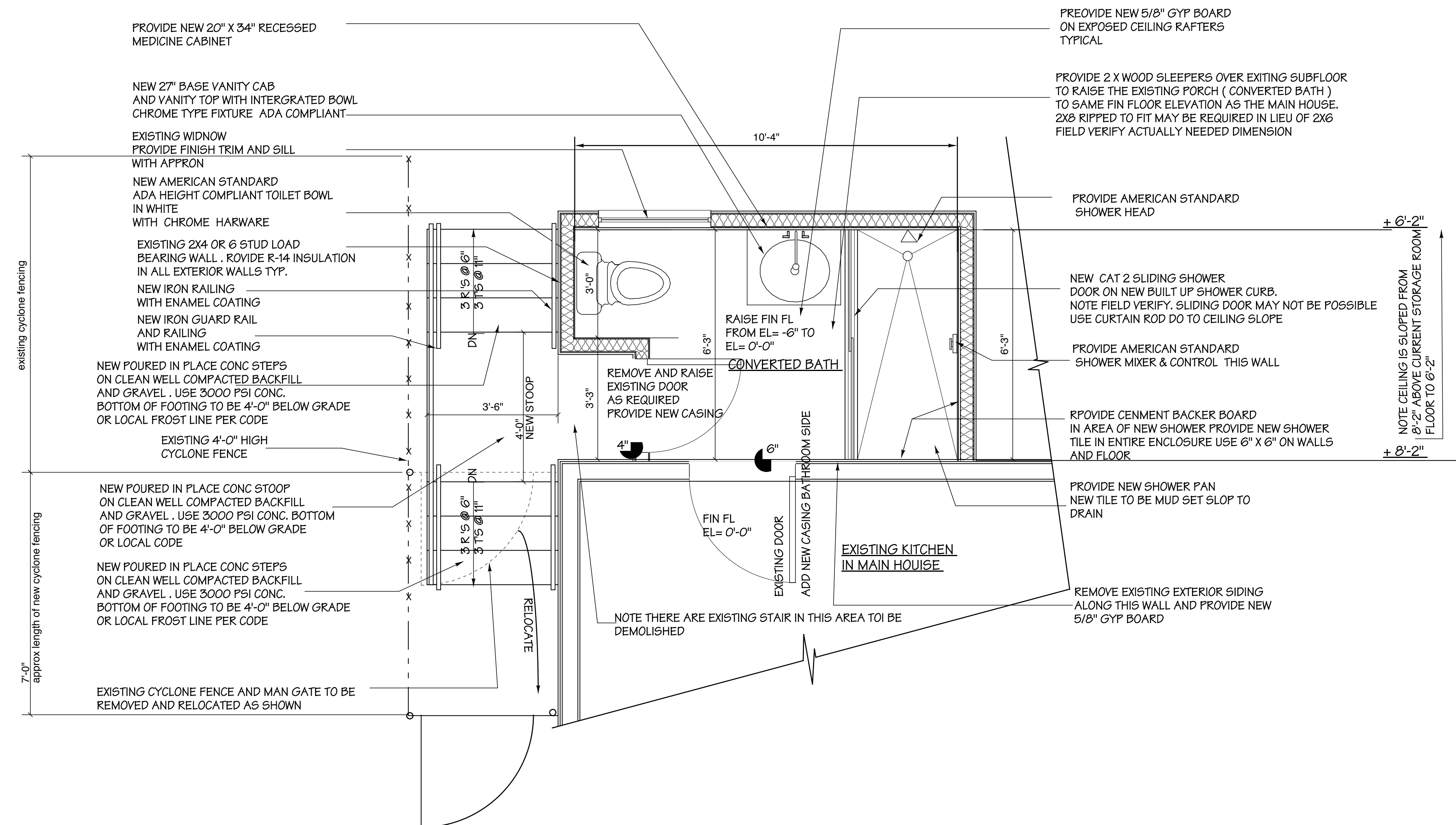


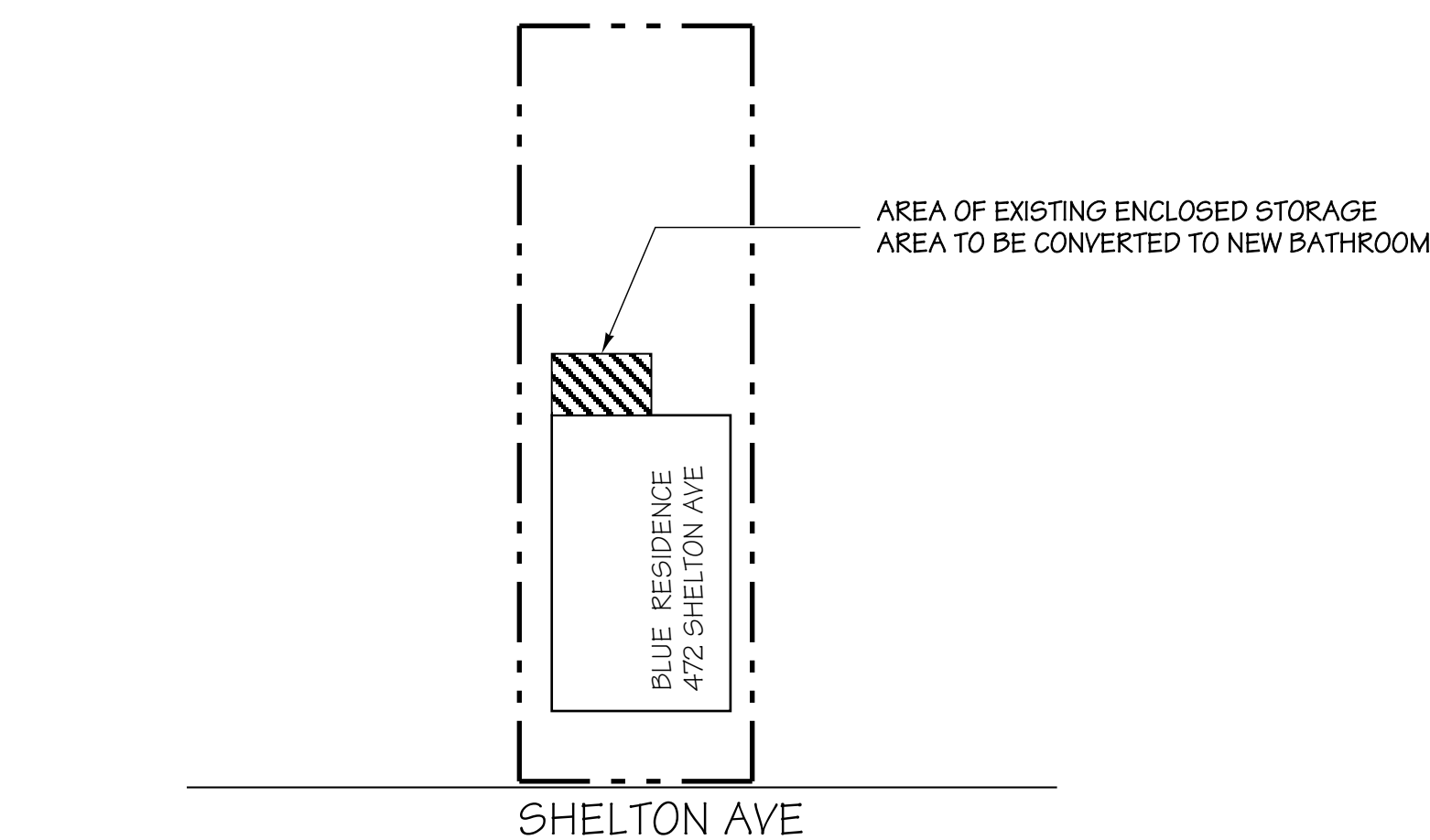
1. INSPECT ENTIRE PROJECT INITIALLY TO ASCERTAIN EXTENT OF REMOVAL WORK. INFORM ARCHITECT OF ANY DISCREPANCIES.

2. PROTECT ADJACENT AREAS NOT SCHEDULED FOR DEMOLITION FROM DAMAGE DUE TO REMOVAL.
3. SCHEDULE REMOVAL WORK TO AVOID INTERRUPTING OR DISTURBING ACTIVITIES OF ADJACENT OCCUPIED AREAS.
4. PROVIDE BARRICADES DURING DEMOLITION WORK TO PREVENT UNAUTHORIZED ACCESS.
5. PROTECT AGAINST EXCESSIVE DUST OR OTHER ENVIRONMENTAL HAZARDS, CONDUCT ASBESTOS INSPECTION AND REMOVE ACCORDING TO STANDARD APPROVED PROCEDURES PRIOR TO COMMENCING OTHER REMOVAL
6. ASSIGN DEMOLITION WORK TO APPROPRIATE TRADES BEST SUITED FOR THE PARTICULAR TYPE OF WORK TO AVOID UNNECESSARY DAMAGE DUE TO THE EFFORTS OF UNSKILLED WORKERS.
7. COORDINATE WITH APPLICABLE UTILITY COMPANIES AND OWNER FOR UTILITY SHUTDOWNS AND RELATED CAPPING NECESSITATED BY REMOVAL WORK.
8. COMPLETE ALL WORK IN A NEAT, EFFICIENT AND WORKMANLIKE MANNER.
9. REMOVE FROM JOBSITE AND DISPOSE OF PROPERLY ALL DISCARDED MATERIAL.
10. PATCH AND REPAIR ALL SURFACES ADJACENT TO REMOVAL.
11. CLEAN, RESTORE, REPAIR OR REPLACE NON-REMOVAL ITEMS OR SURFACES IF TEMPORARILY REMOVED, DAMAGED, EXPOSED, DISTURBED, OR ALTERED BY REMOVAL WORK.
12. CLEAN ENTIRE SPACE IN ANTICIPATION OF NEW CONSTRUCTION.



PREOVIDE NEW 5/8" GYP BOARD
ON EXPOSED WALL STUDS
TYPICAL

Note:
ALL FINISHES TO BE SELECTED BY OWNERS REP
CONTRACTOR TO PURCHASE AND INSTALL.
CONTRACTOR TO PROVIDE SAMPLES OF INTENDED
FINISHES DURING BID PHASE. IE COUNTER TOPS MATERIAL
BACKSPLASH , CERAMIC TILE ETC. ALL MATERIALS ARE SUBJECT
TO APPROVAL AND REVIEW OF ARCHITECT AND OWNERS REP



KEY PLAN

NTS

[illegible]

Contract	
Permit	
Id	
Rate	11/2/2010
Scale	A6 NOTED
Drawn	EJI
Job	
Sheet	A2.01
F	X/X Sheets