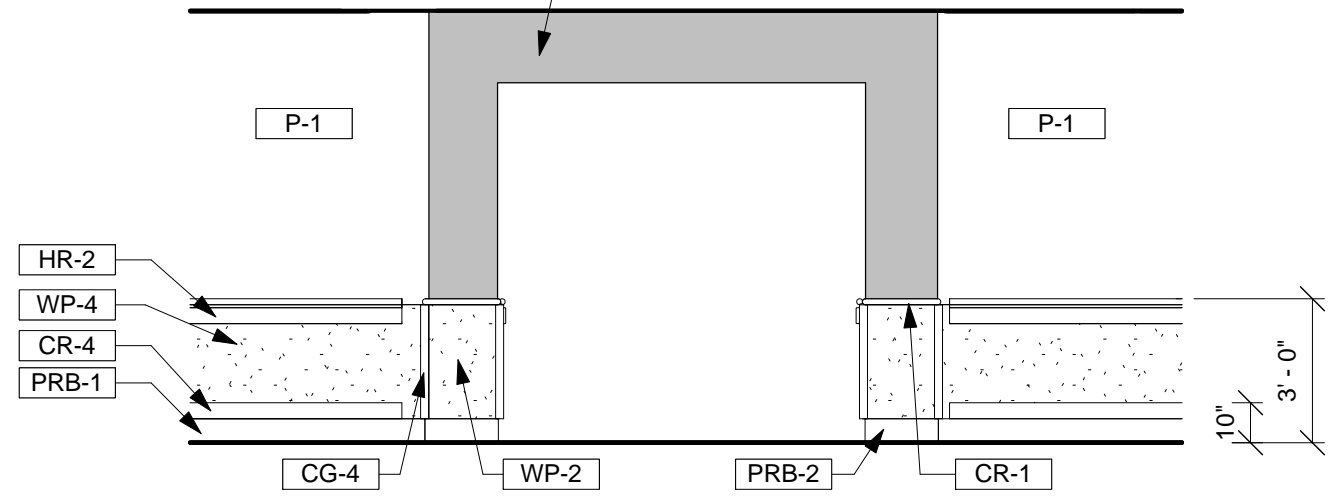
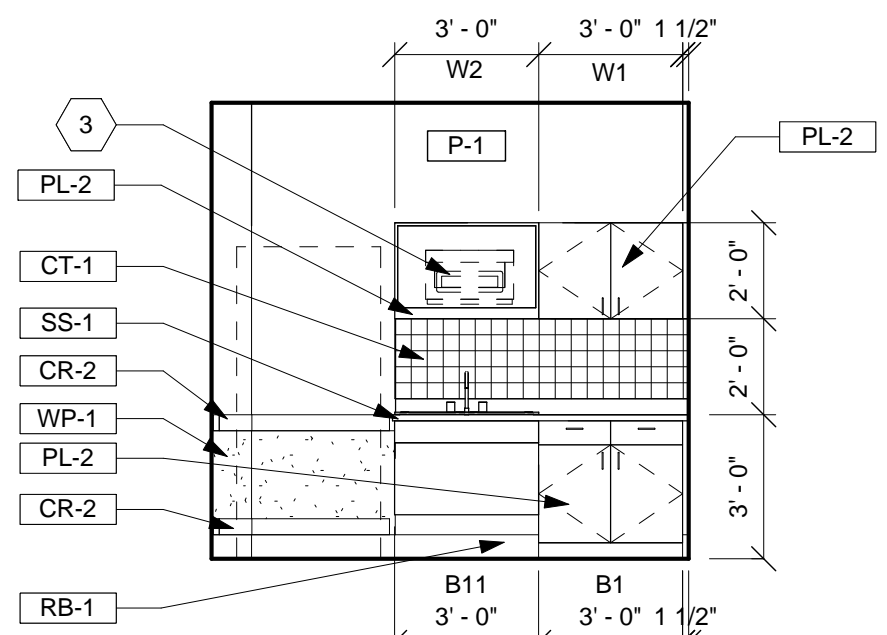


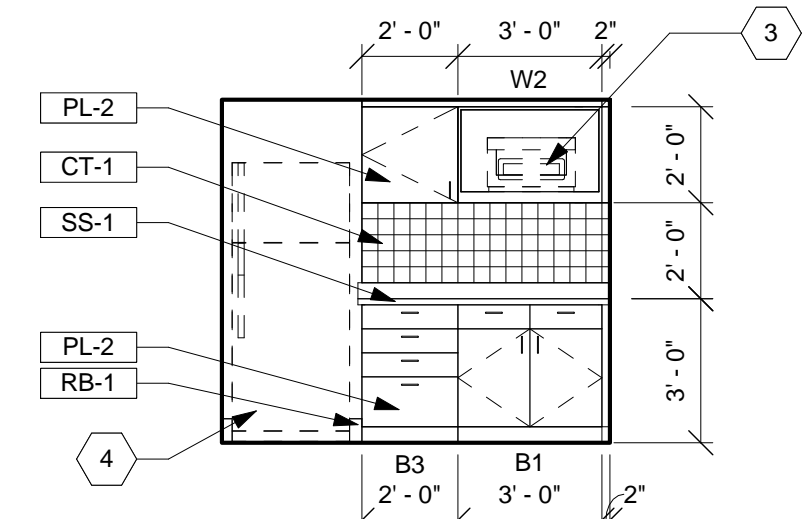
66 CLOSET
Scale: 1/4" = 1'-0"



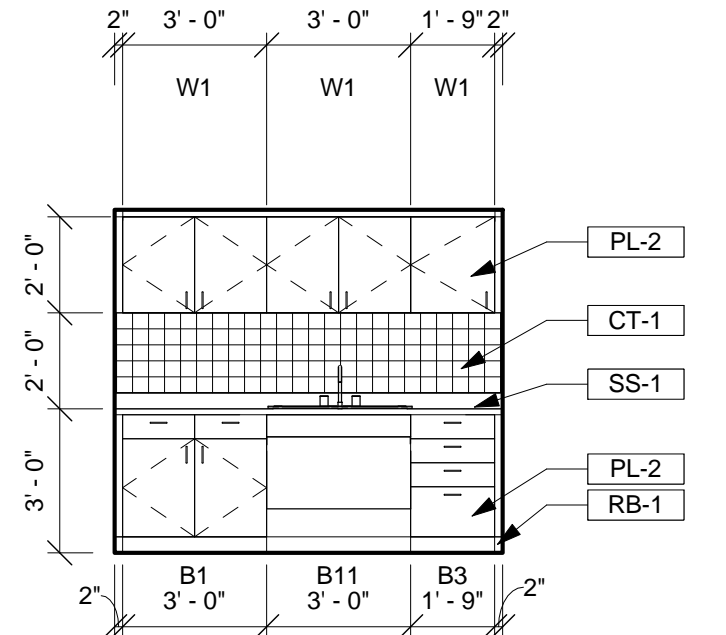
65 CORRIDOR
Scale: 1/4" = 1'-0"



64 NOURISHMENT KITCHEN
Scale: 1/4" = 1'-0"



63 STAFF KITCHEN
Scale: 1/4" = 1'-0"



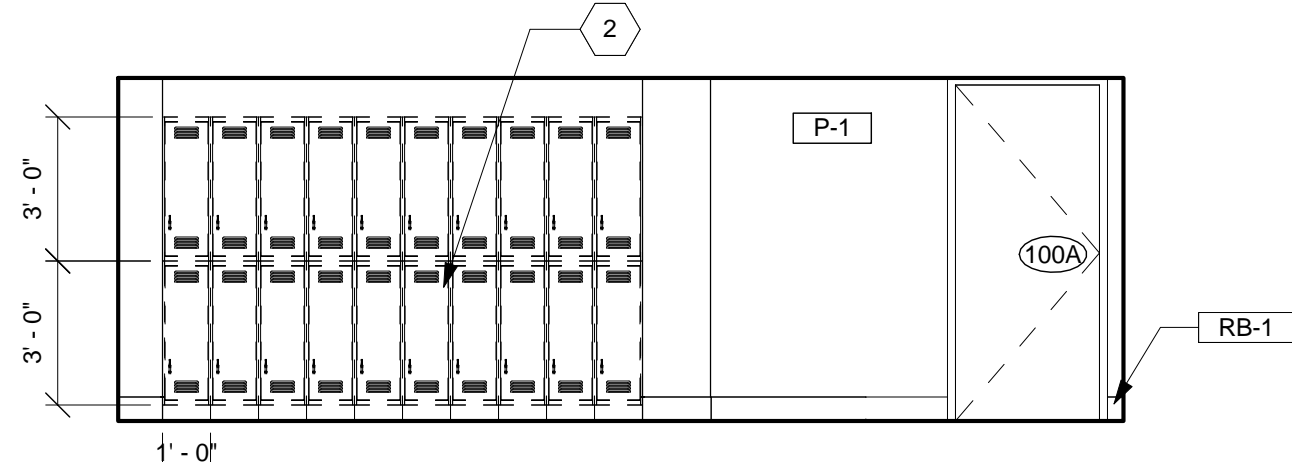
62 STAFF KITCHEN
Scale: 1/4" = 1'-0"

GENERAL INT. ELEVATION NOTES

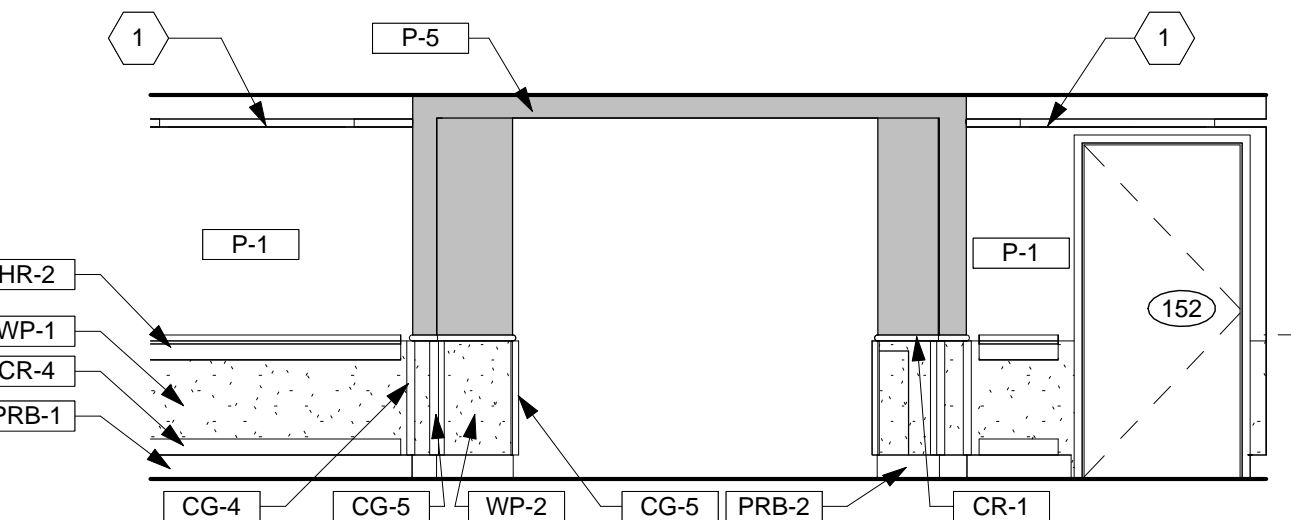
- A. See sheet 137-A703 and 137-A704 for Floor Finish Plans.
B. See sheet 137-A801 for Casework Details.
C. See sheet 137-A701 for Room Finish Schedule.
D. See sheet 137-A702 for Finish Materials Legend.

ELEVATION NOTES

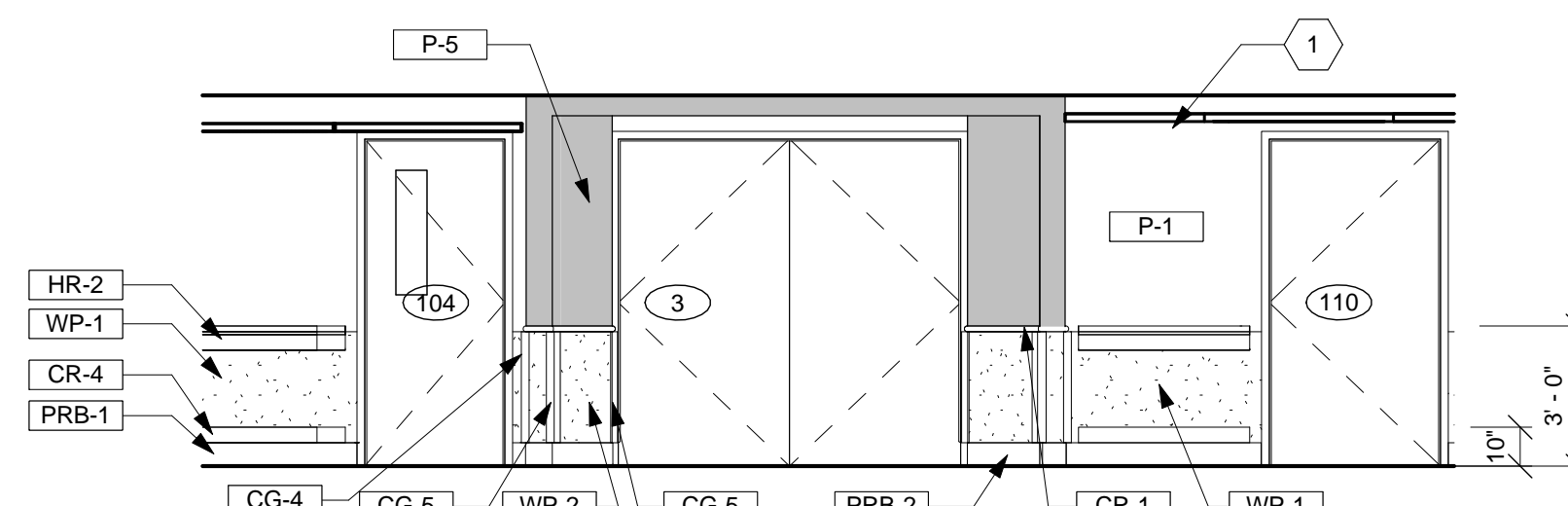
- 1 Wall mounted light fixture. See Electrical Drawings.
2 Metal lockers by Owner.
3 Microwave furnished and installed by Owner.
4 Refrigerator/freezer furnished and installed by Owner.
5 Cart by Owner.
6 Coat rod.
7 Drinking fountain. Remove and reinstall as required to install glass tile.
8 Wall mounted TV.
9 Ice machine furnished and installed by Owner.
10 Gypsum board soffit.



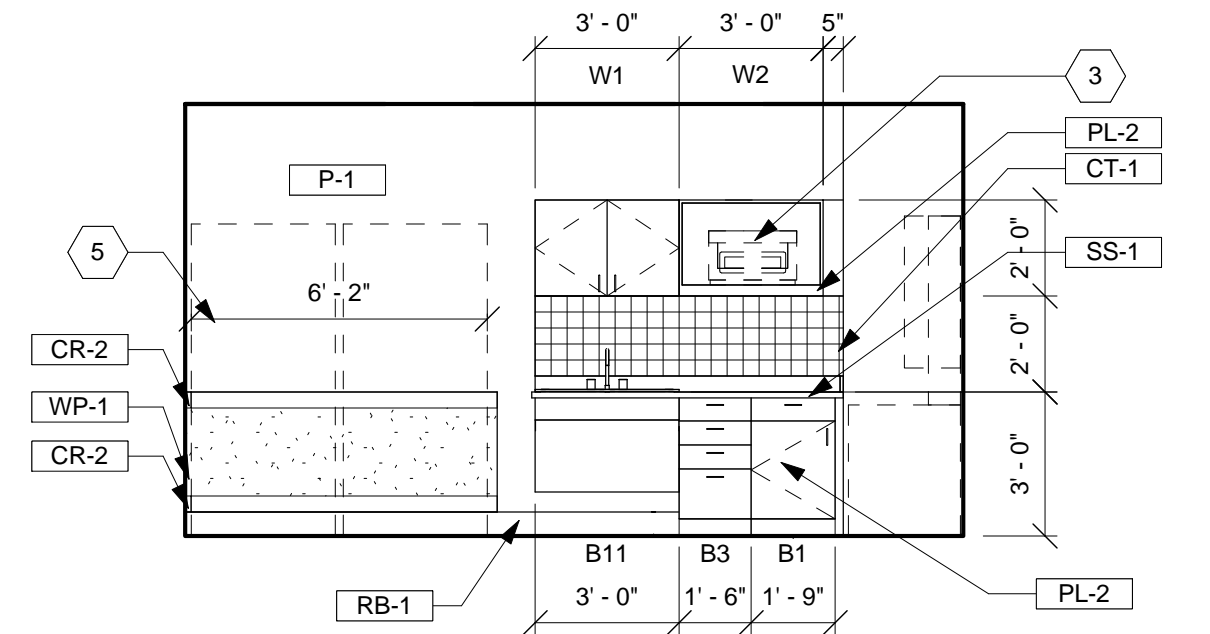
61 STAFF LOUNGE
Scale: 1/4" = 1'-0"



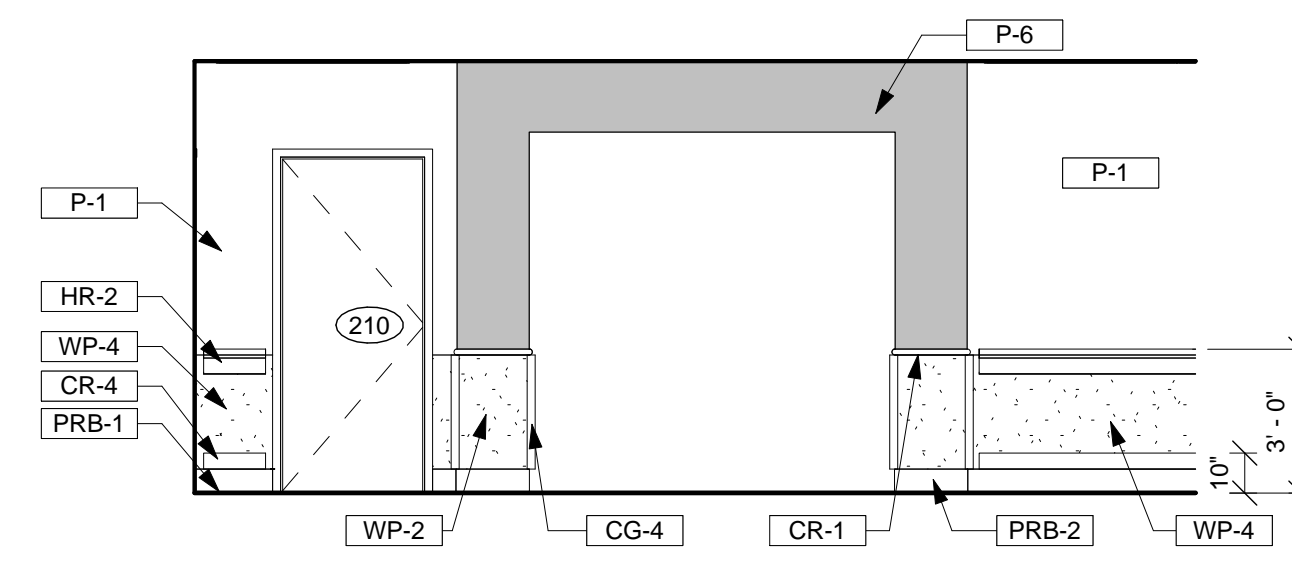
60 CORRIDOR
Scale: 1/4" = 1'-0"



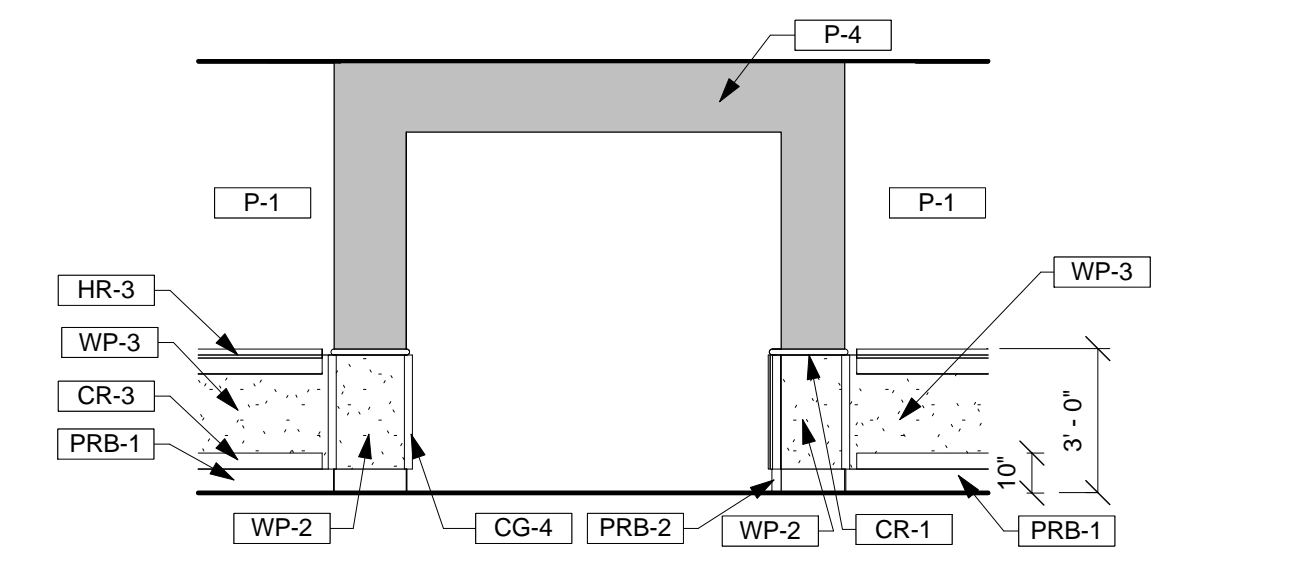
59 CORRIDOR
Scale: 1/4" = 1'-0"



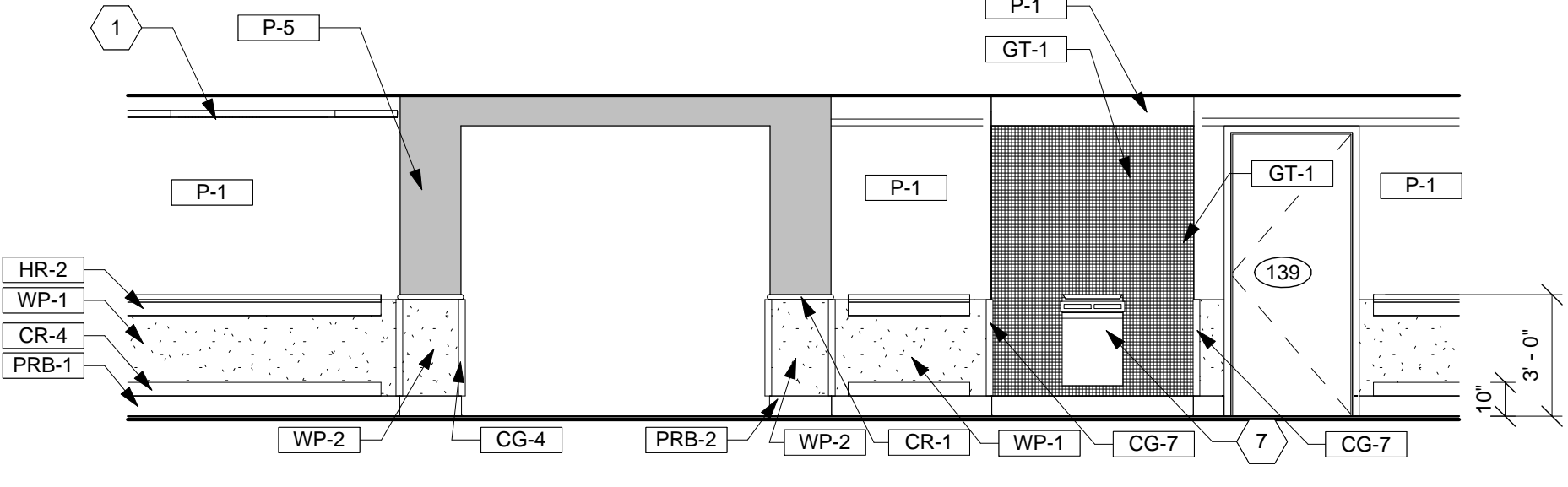
58 NOURISHMENT KITCHEN
Scale: 1/4" = 1'-0"



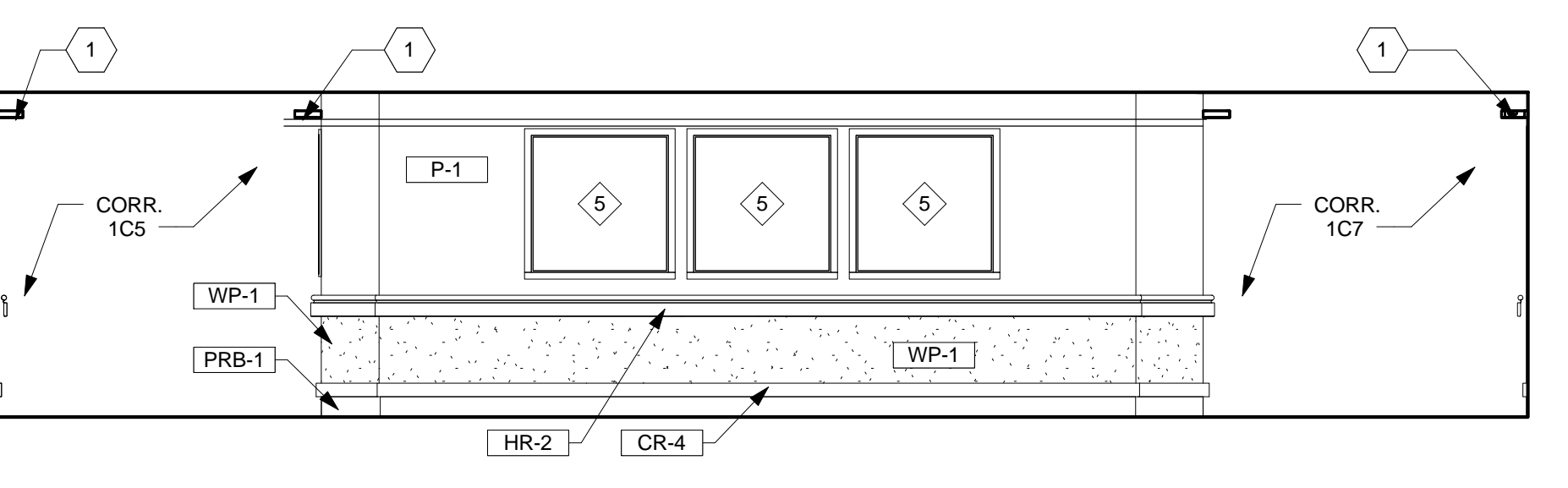
57 CORRIDOR
Scale: 1/4" = 1'-0"



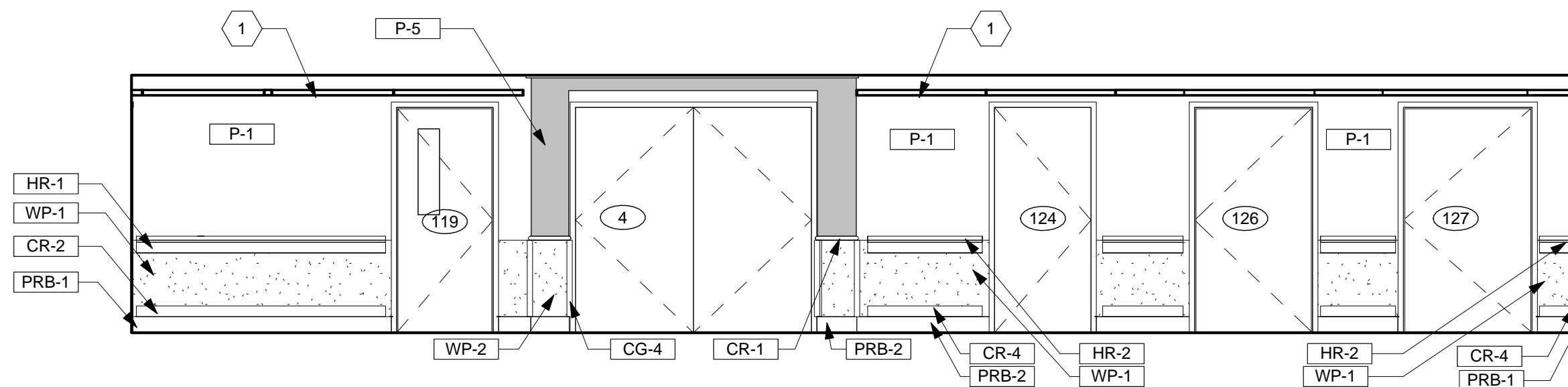
56 CORRIDOR
Scale: 1/4" = 1'-0"



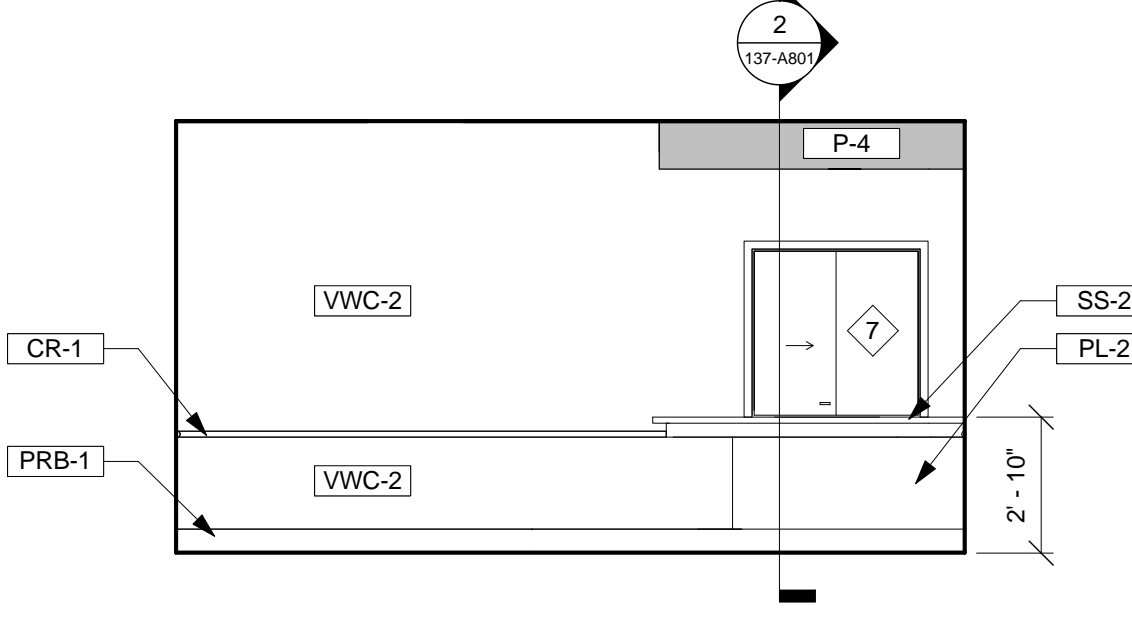
55 CORRIDOR
Scale: 1/4" = 1'-0"



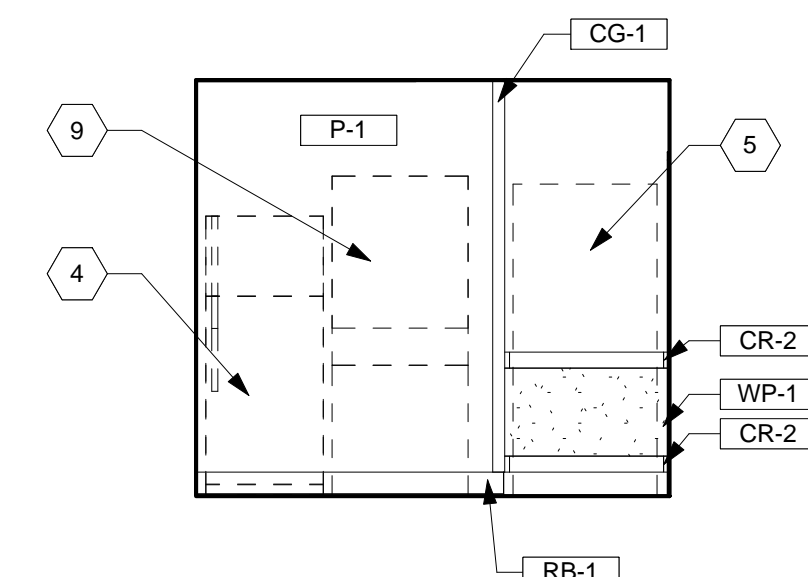
54 CORRIDOR
Scale: 1/4" = 1'-0"



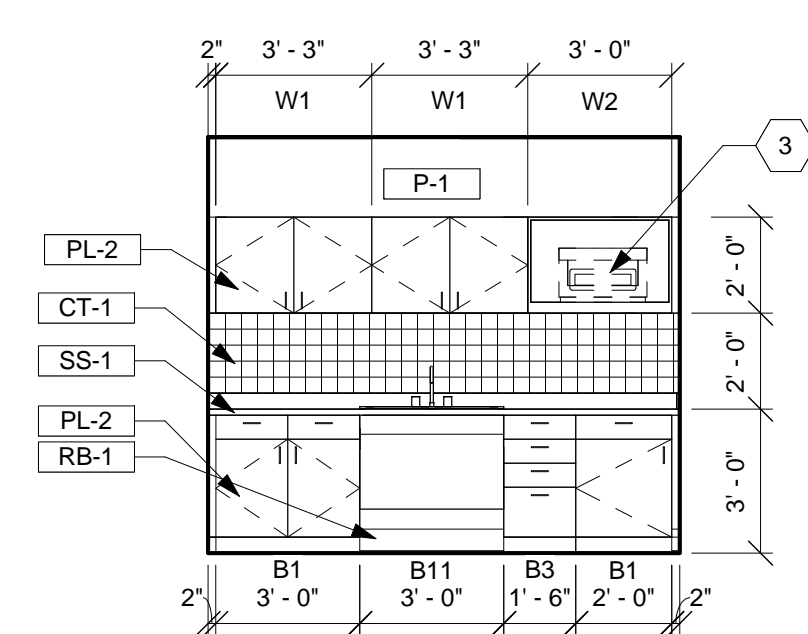
53 CORRIDOR
Scale: 1/4" = 1'-0"



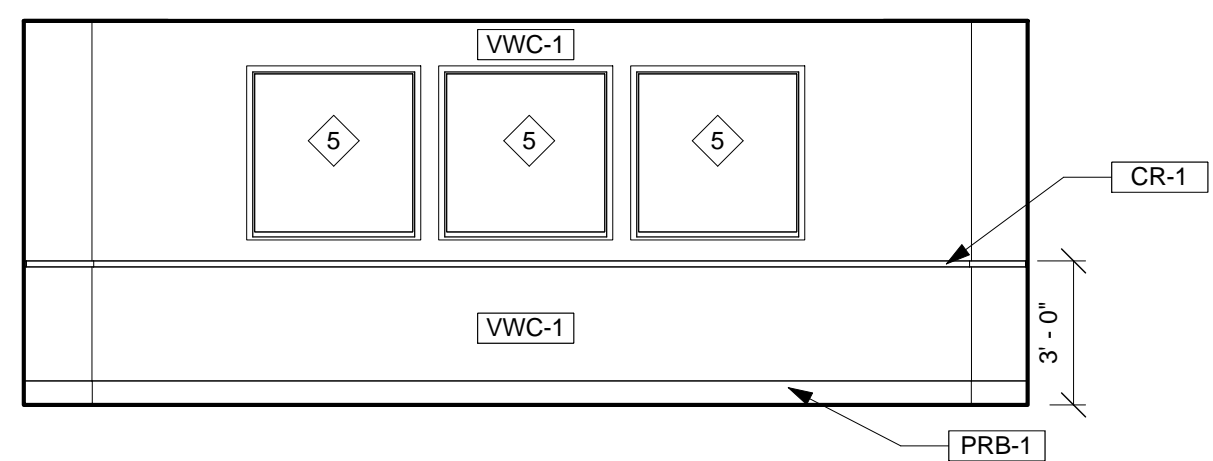
52 WAITING
Scale: 1/4" = 1'-0"



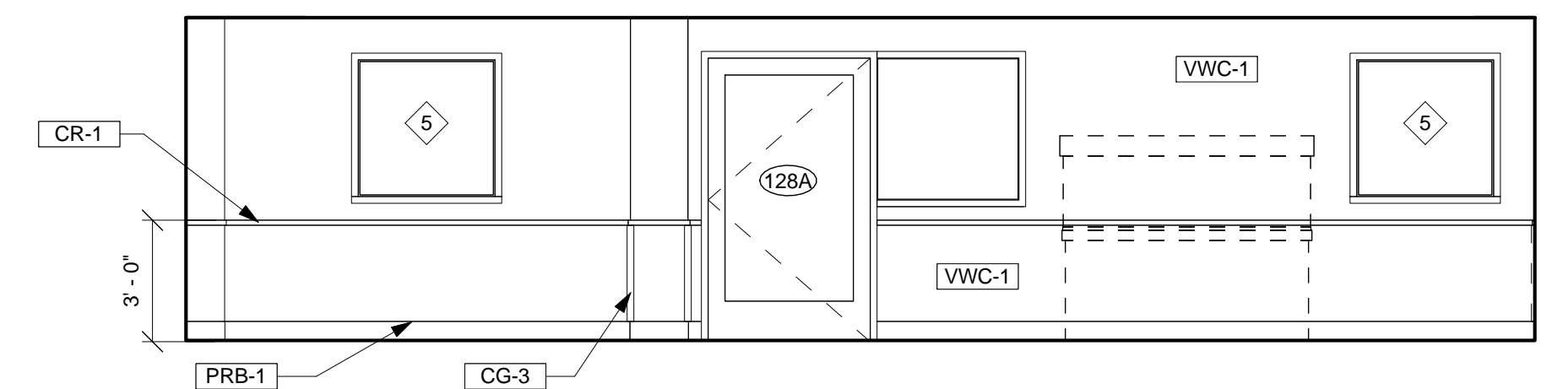
51 NOURISHMENT KITCHEN
Scale: 1/4" = 1'-0"



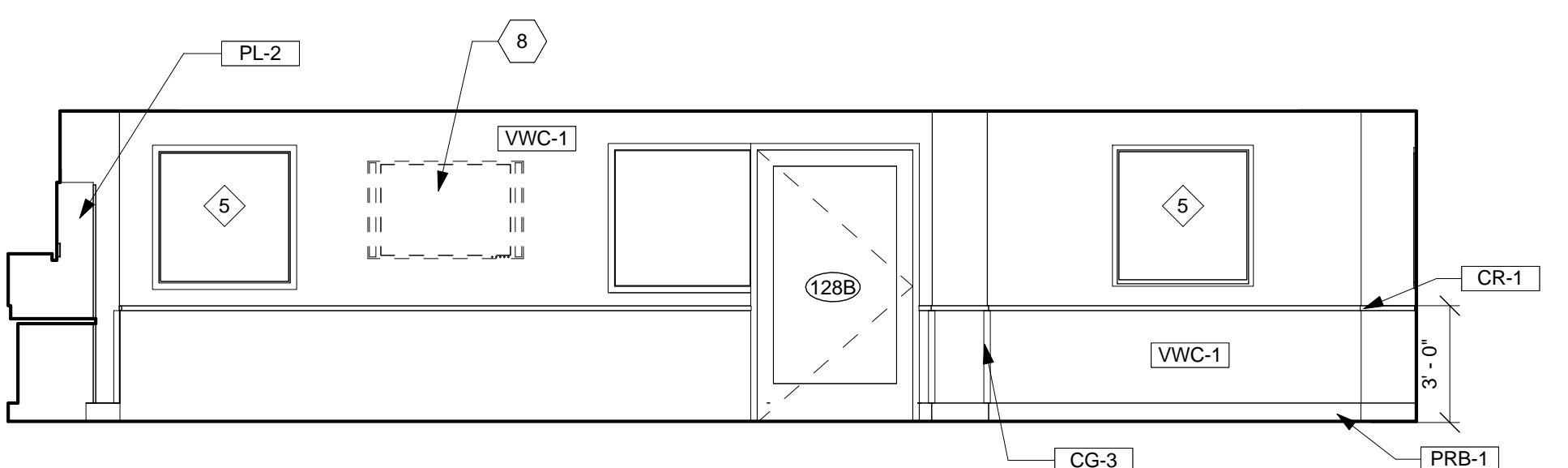
50 NOURISHMENT KITCHEN
Scale: 1/4" = 1'-0"



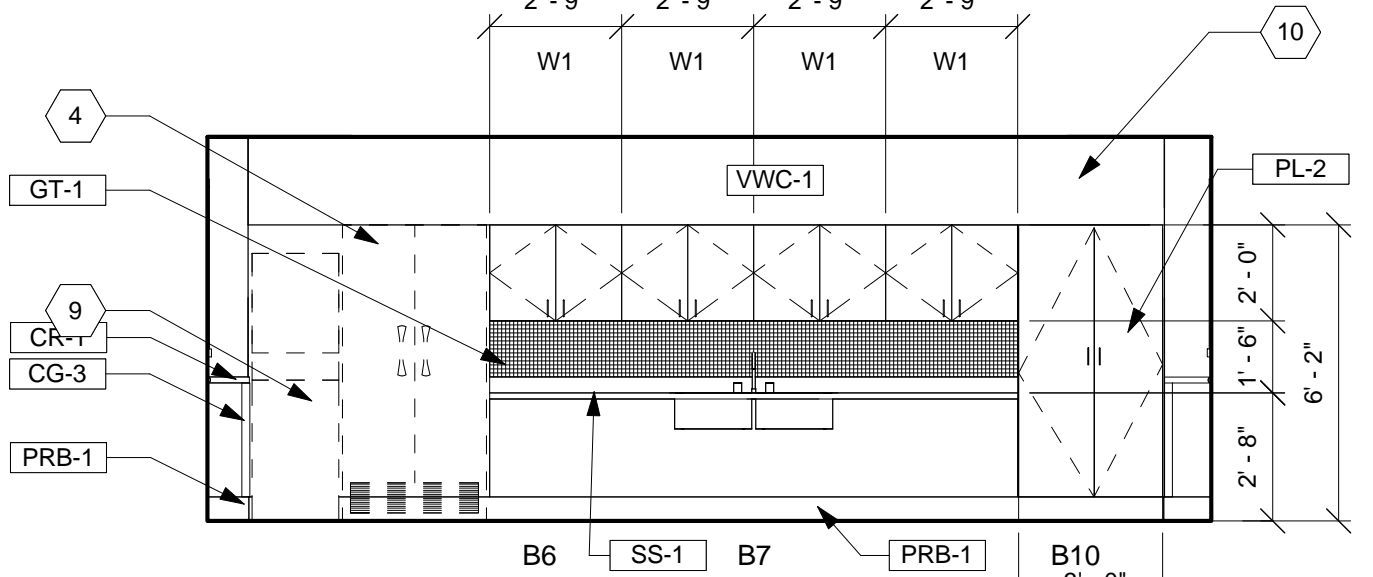
49 DAY ROOM
Scale: 1/4" = 1'-0"



48 DAY ROOM
Scale: 1/4" = 1'-0"



47 DAY ROOM
Scale: 1/4" = 1'-0"



46 DAY ROOM
Scale: 1/4" = 1'-0"

Revisions	Addendum 2	05/29/2013
1		



CONSULTANTS:

ARCHITECT/ENGINEERS:
RDC/JOHN POE ARCHITECTS
524 FERNWOOD DRIVE
ALTIMONTE SPRINGS, FLORIDA 32701
937 461 3290 PHONE
937 461 0260 FAX
1-800-362-1523
jpa@johnpoe.com

Drawing Title
INTERIOR ELEVATIONS
Approved: Project Director

Project Title Hampton VA, VAMC Renovate / Expand SCI, Phase II, 590-911	Date 05/03/2013
Building Number 137	Project No. 590-911
Location Hampton, Va	Drawing Number 137-A404

