

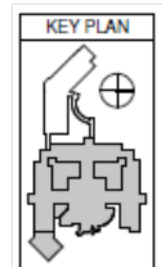
VA Salisbury

Ground Floor

Receiver Count = 53

Receiver coverage = 15 ft radius

This is an estimate for budget purposes. Actual count may vary, depending on factors such as building architecture and radio frequency influence.

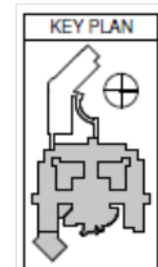
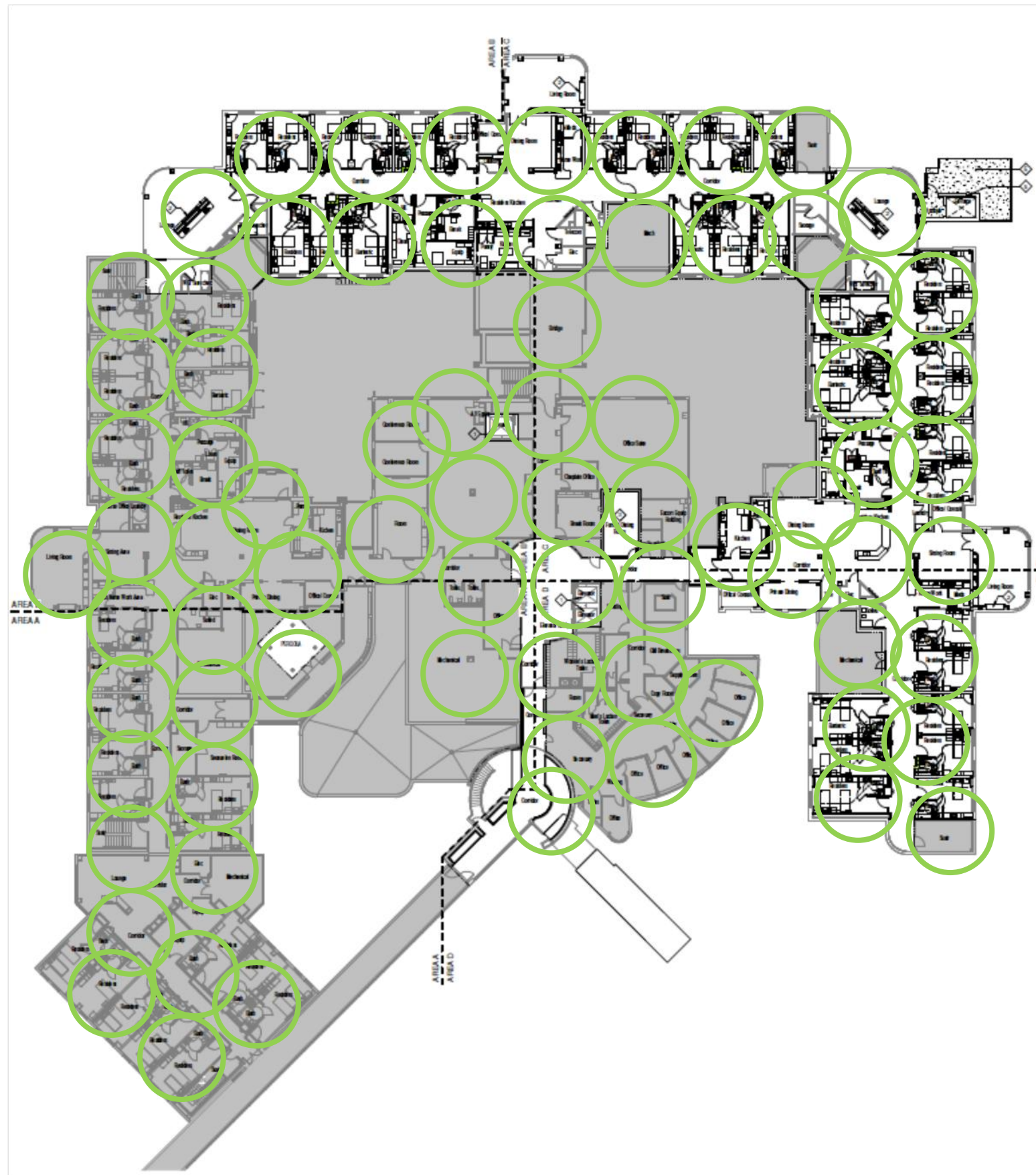
**VA Salisbury**

First Floor

Receiver Count = 80

Receiver coverage = 15 ft radius

This is an estimate for budget purposes. Actual count may vary, depending on factors such as building architecture and radio frequency influence.



VA Salisbury

Second Floor

Receiver Count = 77

Receiver coverage = 15 ft radius

This is an estimate for budget purposes. Actual count may vary, depending on factors such as building architecture and radio frequency influence.