

one eighth inch = one foot  
 0 4 8 16  
 one quarter inch = one foot  
 0 4  
 three eighths inch = one foot  
 0 4  
 one half inch = one foot  
 0 4  
 three quarters inch = one foot  
 0 4  
 one inch = one foot  
 0 6  
 one and one half inches = one foot  
 0 6  
 two inches = one foot  
 0 6  
 three inches = one foot  
 0 6  
 four inches = one foot  
 0 6  
 five inches = one foot  
 0 6  
 six inches = one foot  
 0 6

A  
B  
C  
D  
E  
F

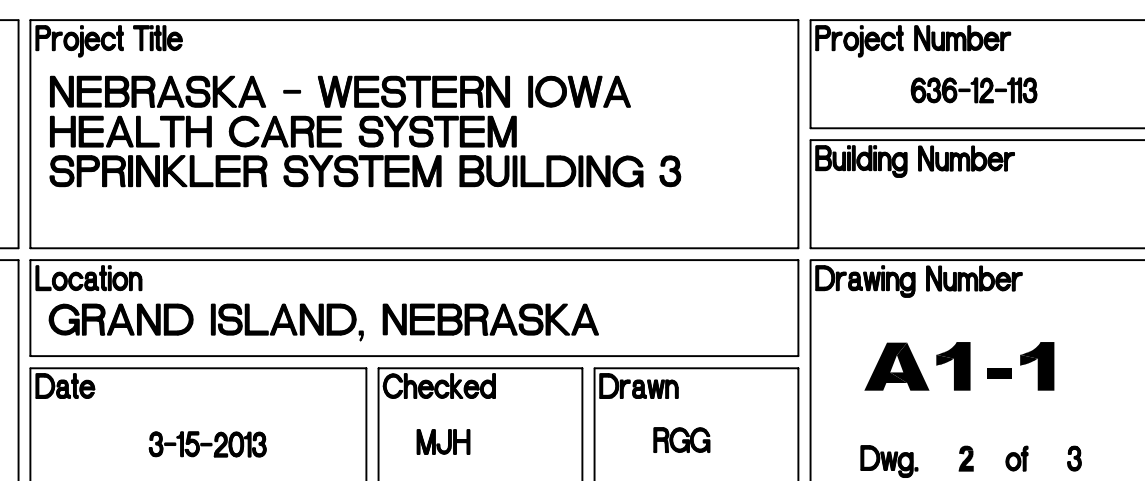
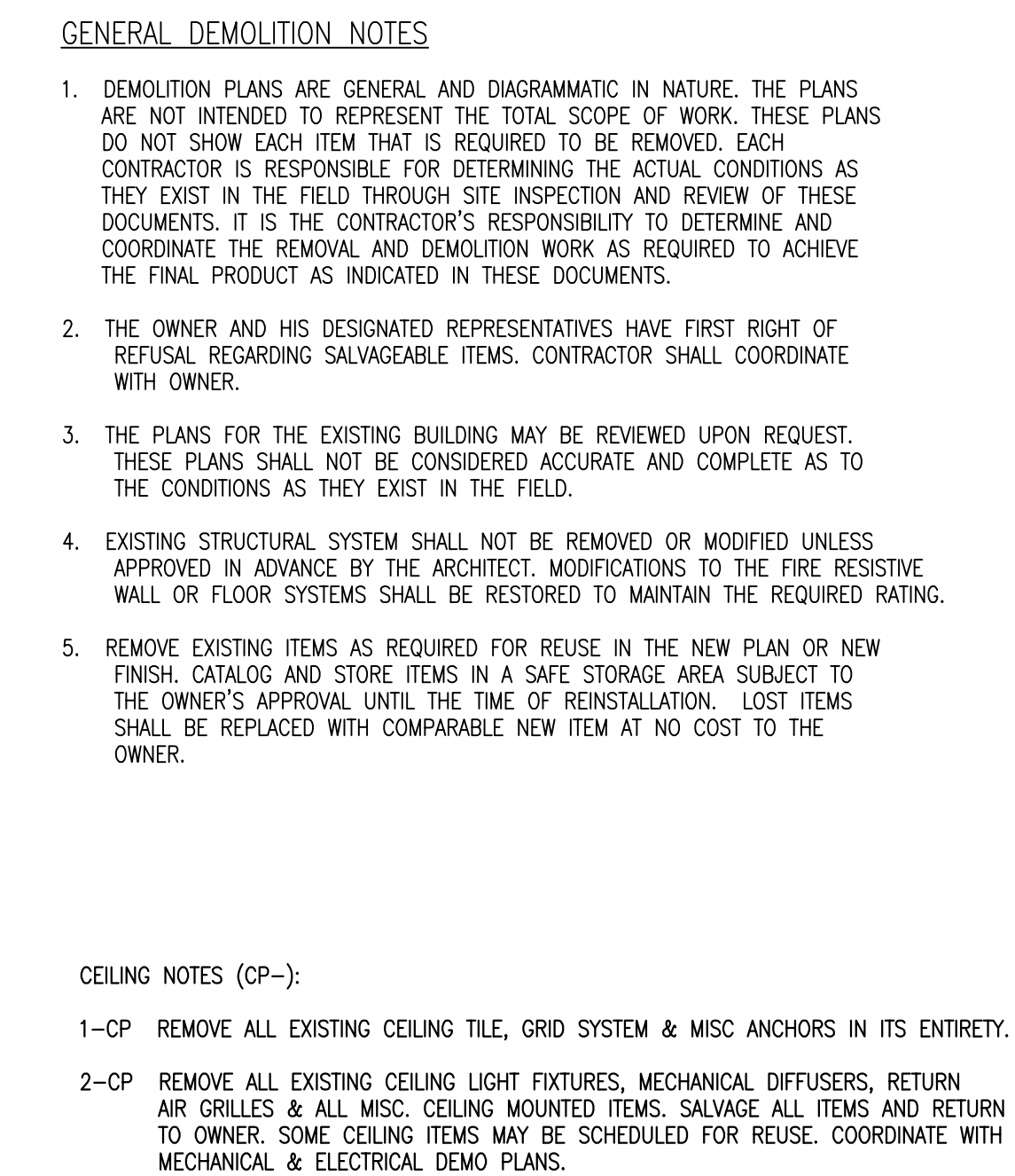
PHARMACY RESIDENT AREA

CEILING WORK ON THIS SIDE SHALL BEGIN ON JUNE 1, 2013 AND ALL CEILING LIGHTING & SPRINKLER PIPING MUST BE COMPLETED BY AUGUST 31, 2013.

HOME HEALTH CARE

CEILING WORK ON THIS SIDE SHALL BEGIN AFTER AWARD OF CONTRACT, CEILING SPRINKLER PIPING WORK SHALL START AFTER 1:00 PM WEEKDAYS AND NOT CONTINUE INTO THE EVENING. ALL FURNITURE & MISC. ITEMS SHALL BE CO-MOVED DURING CEILING DEMOLITION WORK. INSTALLATION OF SPRINKLER PIPING AND CEILING INSTALL WITHIN THE OFFICES. ALL OFFICES SHALL BE AVAILABLE FOR OCCUPANCY THE NEXT WORK DAY. COORDINATE WORK WITH MR. REPRESENTATIVE.

VA FORM 08-6231

[illegible]

**CONSULTANTS:**

**SPECIALIZED  
ENGINEERING  
SOLUTIONS**

11235 Davenport Street  
Suite 104  
Omaha, NE 68154

Phone: 402.991.5520  
Fax: 402.991.5394  
[www.specializedeng.com](http://www.specializedeng.com)

ARCHITECT/ENGINEERS:



12925 West Dodge Road  
Omaha, Ne 68154  
Phone: 402.334.2422 Fax: 402.334.9023  
altusstudios.com  
architecture design planning

Drawing Title	EXISTING BASEMENT & GROUND LEVEL REFLECTED CEILING DEMO PLANS BUILDING #3
---------------	---

Approved: Project Director

Project Title	NEBRASKA - WESTERN IOWA HEALTH CARE SYSTEM SPRINKLER SYSTEM BUILDING 3
---------------	--

Location	GRAND ISLAND, NEBRASKA

Date 3-15-2013

	Check MJH
--	--------------

Drawn	RGG
-------	-----

Project Number  
636-12-113

Building Number

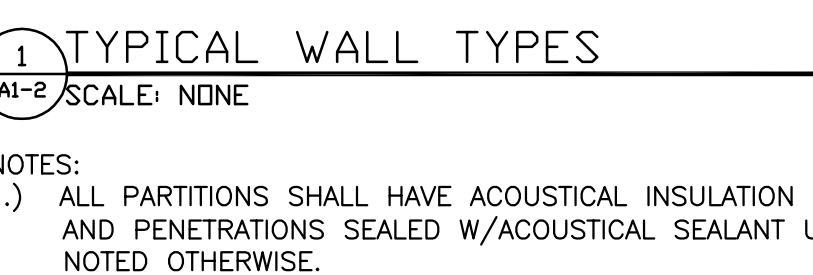
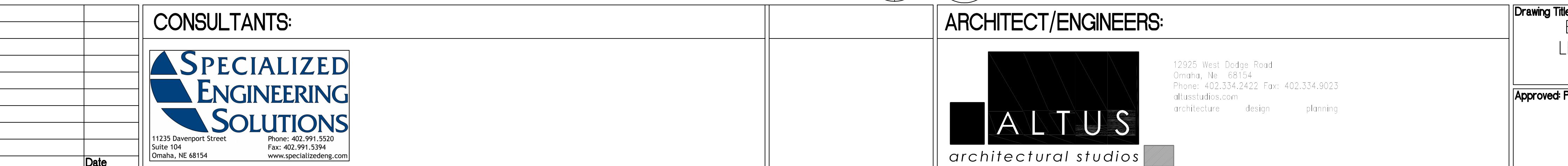
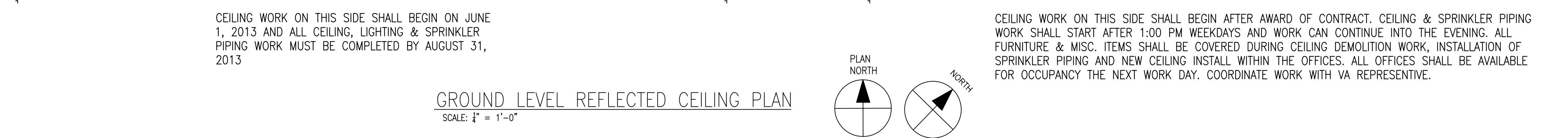
Drawing Number  
**A1-1**

Dwg. 2 of

Office of  
Construction  
and Facilities  
Management







- GENERAL NOTES:
1. DOORS 102, 110, 112 & 120 TO HAVE THE FOLLOWING REVISIONS TO THE EXISTING DOOR HARDWARE REMOVE EXISTING THUMB TURN AND REPLACE WITH DEADBOLT PADLOCK 4550 AND CAM FLIC BY ADAMS RITE.
2. NEW CEILINGS ARE TO BE LAID OUT USING THE EXISTING MECHANICAL DIFFUSERS IN EACH ROOM AS A STARTING POINT.
- AND PENETRATIONS SEALED W/ACOUSTICAL SEALANT UNLESS NOTED OTHERWISE.

CEILING MATERIAL SCHEDULE					
ROOMS	MARK	SIZE	COLOR	MFG.	MODEL NO.
103, 104, 106, 110, 111, 113, 114, 115, 121	ACT-1	24"x24"	WHITE	USC	86185 MARS HEALTHCARE CLIMAPLUS 50 EDGE (TYPICAL AT ALL ROOMS SEPARATED BY WALLS OR BULKHEADS)
108, 118	ACT-2	24"x24"	WHITE	USC	56099 CLEAR ROOM CLIMAPLUS (BATHROOMS ONLY)
101, 102, 105, 112, 115/116	ACT-3	24"x24"	WHITE	USC	86785 MARS HEALTHCARE CLIMAPLUS SLT EDGE (TYP. AT ALL CORRIDORS & ADJACENT ROOMS WHERE CEILING IS CONTINUOUS WITH CORRIDOR)

- NOTES:
1. PROVIDE NEW CEILING TILES AND GRID AS SHOWN (COORDINATE & FIELD VERIFY CEILING PAD TYPE WITH EXISTING CEILING CONDITIONS:
  2. NEW CEILING PERIMETER WALL ANGLE TO BE INSTALLED A 1" BELOW EXISTING CEILING LINE.
  3. EXPOSED SUSPENSION SYSTEM \_ WHITE \_ USG \_ DX / DXL 1/2" HEAVY DUTY

0 4 8 12 16 20 24 28 32 36 40 44 48 52 56 60 64 68 72 76 80 84 88 92 96 100  
one eighth inch = one foot  
one quarter inch = one foot  
one half inch = one foot  
three eighths inch = one foot  
three quarters inch = one foot  
one inch = one foot  
one and one half inches = one foot  
two inches = one foot  
three inches = one foot

A

B

C

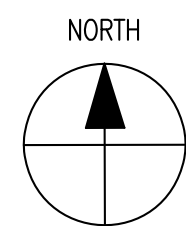
D

E

F



SITE PLAN - FIRE PROTECTION  
SCALE: 1" = 10'-0"



- SHEET NOTES**
1. ROUTE FIRE SERVICE PIPING INTO BUILDING FROM EXISTING FIRE SERVICE MAIN. INSTALL PIPING AND THRUST BLOCKS, AND FLUSH SYSTEM, IN ACCORDANCE WITH NFPA 24. REMOVE EXISTING THRUST BLOCK AND INSTALL NEW BLOCK AT POINT OF CONNECTION. OWNER CURRENTLY REPLACING PAVEMENT IN VICINITY OF THE BUILDING. COORDINATE PAVEMENT REMOVAL AND REPLACEMENT WITH OWNER. THIS CONTRACT SHALL NOT INCLUDE COSTS FOR PAVEMENT REMOVAL AND REPLACEMENT IDENTIFIED WITHIN DASHED LINES. REPAIR CUTS TO SIDEWALK AND LANDSCAPE BEYOND EXTENTS OF OWNER-FURNISHED WORK TO ORIGINAL CONDITION UPON COMPLETION OF PROJECT.
  2. INSTALL POST INDICATOR VALVE. VALVE SHALL BE SUPERVISED AND INTEGRATED WITH FIRE ALARM SYSTEM.
  3. REFER TO BASEMENT FLOOR PLAN FOR CONTINUATION OF FIRE SERVICE PIPING.

- GENERAL NOTES**
- A. FIRE PROTECTION WORK SHALL INCLUDE A COMPLETE AND OPERABLE SYSTEM COMPLYING WITH APPLICABLE STATE AND LOCAL CODES, LAWS AND REGULATIONS. THE SYSTEM SHALL INCLUDE FIRE PROTECTION RISERS, SPRINKLERS, PIPING, VALVES, ALARMS AND INSPECTOR'S TEST CONNECTION.
  - B. THE FIRE SPRINKLER SYSTEM SHALL BE INSTALLED IN ALL AREAS OF THE BUILDING INDICATED ACCORDING TO THE LATEST EDITION OF APPLICABLE NFPA STANDARDS, SPECIFICALLY NFPA 13 AND OTHER NFPA STANDARDS AS REQUIRED. EXISTING SYSTEM SHALL BE INSTALLED PER NEBRASKA STATE FIRE MARSHAL REQUIREMENTS AND REQUIREMENTS OF THE CITY OF GRAND ISLAND FIRE DEPARTMENT.
  - C. FIRE SPRINKLER DESIGN SHALL BE BASED ON HYDRAULIC CALCULATIONS ACCORDING NFPA 13, WITH SHOP DRAWINGS PREPARED ACCORDING TO THE REQUIREMENTS OF THE OFFICE OF THE STATE FIRE MARSHAL OR AUTHORITY HAVING JURISDICTION.
  - D. SPRINKLER CONTRACTOR SHALL OBTAIN STATIC AND RESIDUAL WATER PRESSURE AND FLOW PRIOR TO SYSTEM DESIGN AND SHALL SUBMIT RECENT HYDRANT FLOW TEST DATA WITH SHOP DRAWING SUBMITTALS.
  - E. DRAWINGS ARE SCHEMATIC IN NATURE, INTENDED TO CONVEY THE SCOPE OF WORK AND GENERAL ARRANGEMENT OF THE SYSTEM. SPRINKLER SYSTEM INSTALLING CONTRACTOR SHALL COORDINATE SYSTEM ARRANGEMENT WITH ARCHITECTURAL, STRUCTURAL, MECHANICAL AND ELECTRICAL COMPONENTS. SPRINKLER PIPING SHALL NOT BE INSTALLED BELOW MECHANICAL EQUIPMENT OR WITHIN CLEARANCE SPACES FOR MECHANICAL EQUIPMENT. INSTALLING CONTRACTOR SHALL BE RESPONSIBLE FOR ANY MODIFICATIONS TO THE SYSTEM REQUIRED TO AVOID CONFLICTS.
  - F. AREAS IDENTIFIED INDICATE THE RECOMMENDED MINIMUM OCCUPANCY CLASSIFICATION, SPRINKLER TEMPERATURE CHARACTERISTIC OR SPRINKLER TYPES TO BE INSTALLED. SPRINKLER SYSTEM SHALL BE DESIGNED TO MEET OR EXCEED THESE RECOMMENDATIONS AND SHALL BE SUBJECT TO APPROVAL BY THE AUTHORITY HAVING JURISDICTION.
  - G. A PRE-DESIGN MEETING SHALL BE COORDINATED WITH THE ARCHITECT PRIOR TO SUBMITTAL OF PIPING LAYOUT DRAWINGS. ARCHITECT SHALL ISSUE COMMENTS CONCERNING SUBMITTAL PACKAGE WITHIN TEN WORKING DAYS.
  - H. CONTRACTOR SHALL COORDINATE PIPING AND SPRINKLER LOCATIONS AND REVIEW PROPOSED SPRINKLER PLANS WITH ARCHITECT PRIOR TO INSTALLATION.
  - I. COORDINATE PIPING AND SPRINKLERS IN EXPOSED AREAS TO MINIMIZE APPEARANCE. INSTALL SPRINKLERS A MINIMUM OF SIX INCHES FROM OUTLETS, GRILLES AND LIGHT FIXTURES. INSTALL SPRINKLERS IN LAY-IN CEILINGS WITHIN THREE INCHES OF THE CENTERLINE OF ACOUSTICAL CEILING TILE.
  - J. INSTALL FIRE DEPARTMENT CONNECTION AS INDICATED ON THE DRAWINGS. FDC SHALL BE INSTALLED MINIMUM OF 3' 0" AND MAXIMUM OF 4' 0" ABOVE GRADE. PROVIDE HOSE CONNECTION THREADS IN ACCORDANCE WITH LOCAL FIRE DEPARTMENT REQUIREMENTS.
  - K. INSTALL INSPECTOR'S TEST CONNECTION AND MAIN DRAIN ROUTED TO EXTERIOR WALL.
  - L. COORDINATE INSTALLATION OF SPRINKLERS AND PIPING SYSTEMS TO AVOID FREEZING CONDITIONS. NOTIFY ARCHITECT OF AREAS FOR WHERE SYSTEM MAY BE EXPOSED TO FREEZING. INSTALL DRY SIDEWALL SPRINKLERS IN ROOMS INDICATED WHERE ROOMS MAY BE UNCONDITIONED OR EXPOSED TO FREEZING CONDITIONS. PROVIDE AUXILIARY DRAINS WHERE REQUIRED.
  - M. ALL EXPOSED PIPING, EXCEPT IN ATTIC, SHALL BE PAINTED AND SHALL HAVE THREADED FITTINGS. PIPE SHALL BE PRIMED AND READY TO ACCEPT PAINT. CPVC PIPING SHALL NOT BE INSTALLED IN ANY LOCATION WHERE PIPING IS EXPOSED.
  - N. WHERE SPRINKLER PIPING SYSTEM PENETRATES FIRE RESISTIVE RATED ASSEMBLIES, SEAL OPENINGS WITH APPROVED CONSTRUCTION METHODS AND MATERIALS. APPLICABLE UL CONSTRUCTION DETAILS SHALL BE USED WHERE RATED ASSEMBLIES ARE PENETRATED BY SPRINKLER PIPING SYSTEM.
  - O. AVOID ROUTING SPRINKLER PIPING ABOVE ELECTRICAL, DATA, IT AND COMMUNICATION PANELS.
  - P. REFER TO SECTION 21 10 00 FOR ADDITIONAL REQUIREMENTS.
  - Q. PROVIDE DRY PIPE SPRINKLER PROTECTION FOR ALL UNHEATED AREAS OF THE BUILDING.
  - R. ROUTE SPRINKLER PIPING AS HIGH AS POSSIBLE THROUGHOUT STRUCTURE, UNLESS SPECIFICALLY NOTED OTHERWISE ON DRAWINGS.
  - S. SUPPORT ALL PIPING FROM STRUCTURE.
  - T. ALL HOLES FOR PIPING AND CONDUIT SHALL BE DRILLED OR CORE DRILLED.

Revisions	Date

**CONSULTANTS:**

**SPECIALIZED ENGINEERING SOLUTIONS**

11235 Davenport Street  
Suite 104  
Omaha, NE 68154

Phone: 402.991.5520  
Fax: 402.991.5394  
www.specializedeng.com



**ARCHITECT/ENGINEERS:**

**ALTUS architectural studios**

1120 West Dodge Road  
Des Moines, IA 50319  
Phone: 515.281.2422 Fax: 515.281.2023  
altusarch.com

**Drawing Title**

**SITE PLAN  
FIRE PROTECTION**

**Approved: Project Director**

**Project Title**

**NEBRASKA - WESTERN IOWA  
HEALTH CARE SYSTEM  
SPRINKLER SYSTEM BUILDING 3**

**Location**

**GRAND ISLAND, NEBRASKA**

**Date**

**03-15-2013**

**Project Number**

**636-12-113**

**Building Number**

**Drawing Number**

**FS1-0**

**Dwg. 1 of 6**

**Office of  
Construction  
and Facilities  
Management**

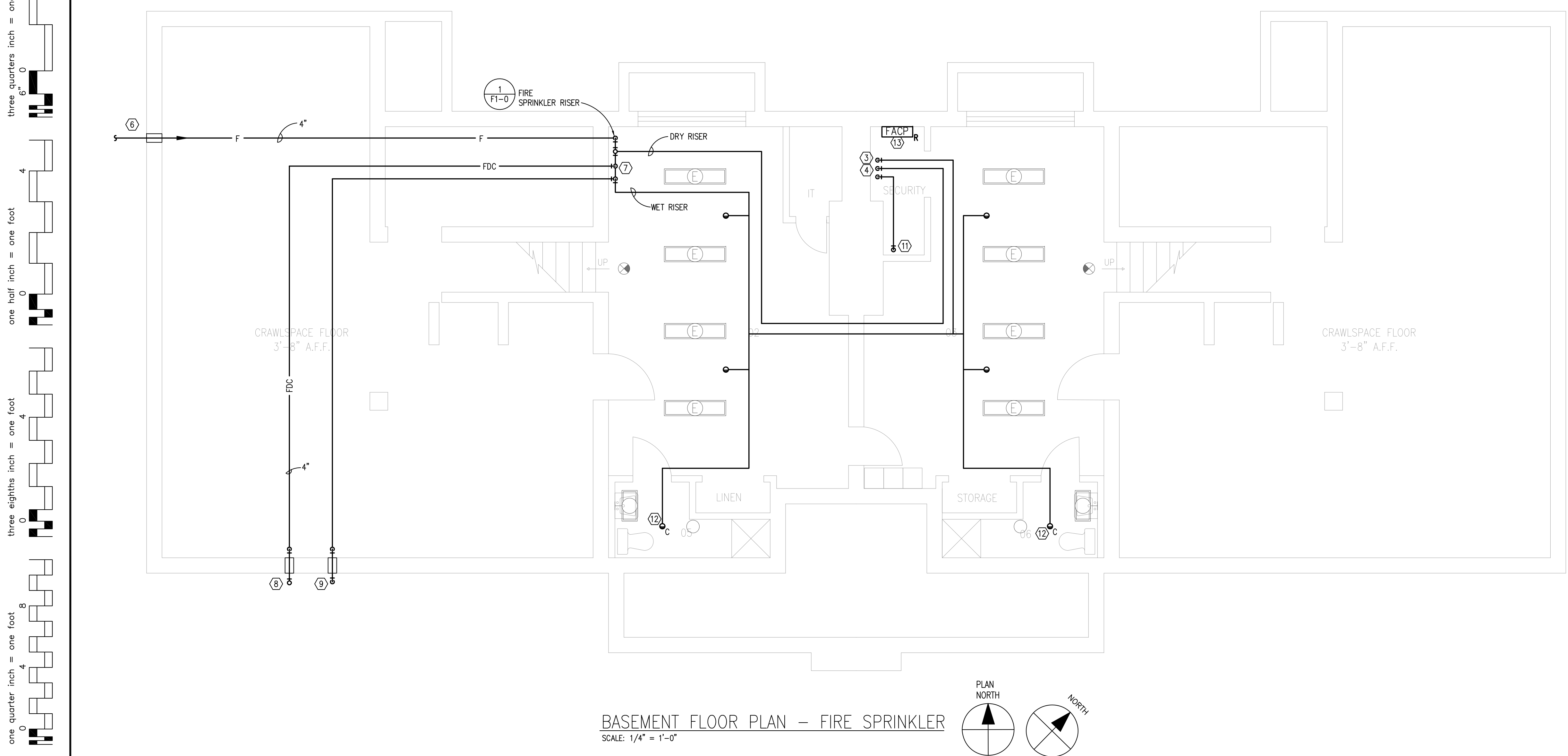
**Department of  
Veterans Affairs**

2013 © COPYRIGHT. SEE PROJ. #12197  
PERMISSION TO REPRODUCE ANY PART OF THIS DOCUMENT IS HEREBY  
GRANTED SOLELY FOR THE PURPOSE OF THE CONSTRUCTION OF THE  
PROJECT OR THE ARCHIVING OF THIS PROJECT. UNAUTHORIZED USE  
OF THIS DOCUMENT WITHOUT THE WRITTEN PERMISSION OF SPECIALIZED  
ENGINEERING SOLUTIONS IS PROHIBITED BY COPYRIGHT LAW.  
DO NOT SCALE DRAWING. ALL DIMENSIONS AND CLEARANCES SHALL  
BE VERIFIED FROM APPROPRIATE SOURCES. ALL WORK SHALL BE  
COORDINATED PRIOR TO INSTALLATION. SEE SPECIFICATIONS.

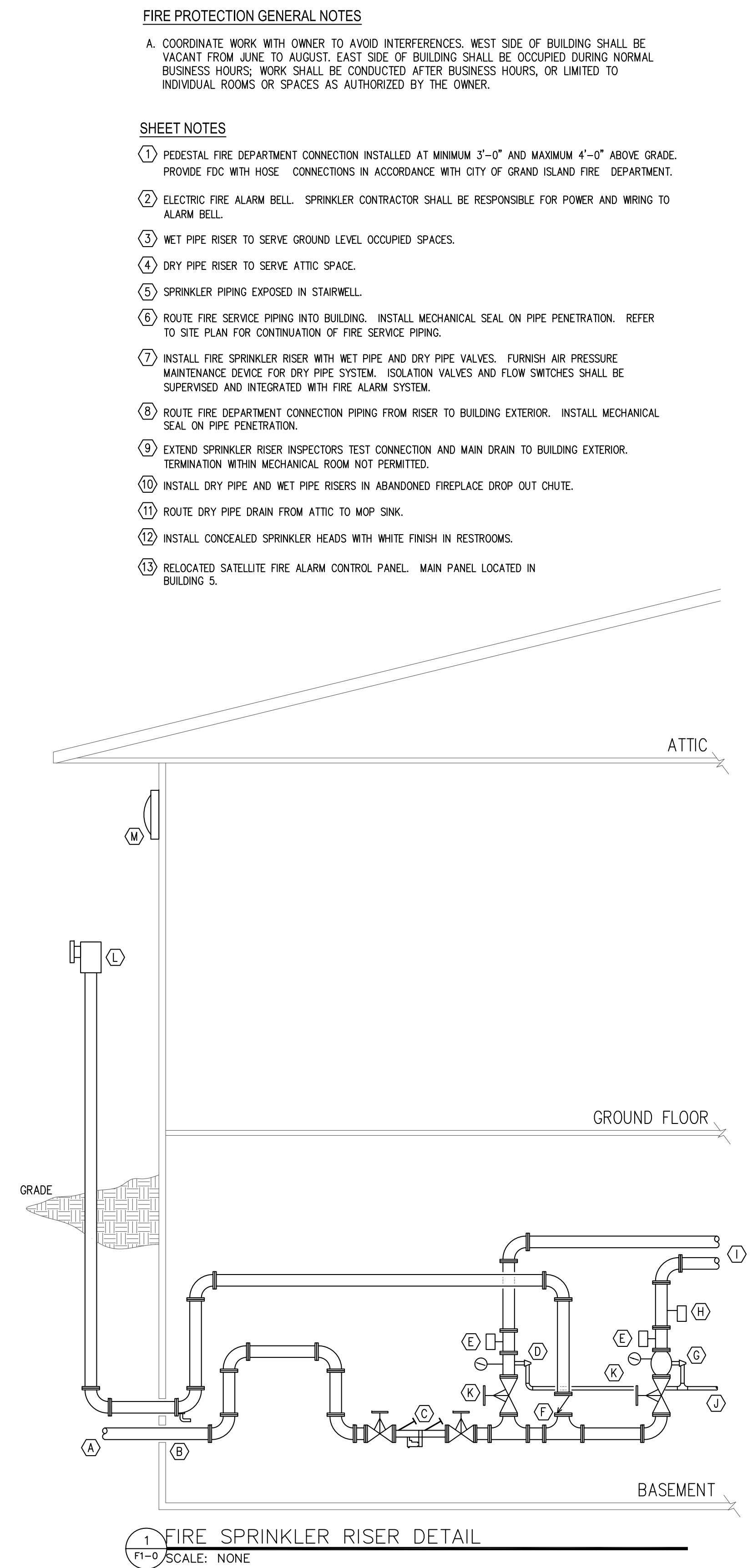




GROUND LEVEL FLOOR PLAN – FIRE SPRINKLER  
SCALE: 1/4" = 1'-0"









BASEMENT FLOOR PLAN – FIRE SPRINKLER  
SCALE: 1/4" = 1'-0"



1 FIRE SPRINKLER RISER DETAIL  
F1-0 SCALE: NONE

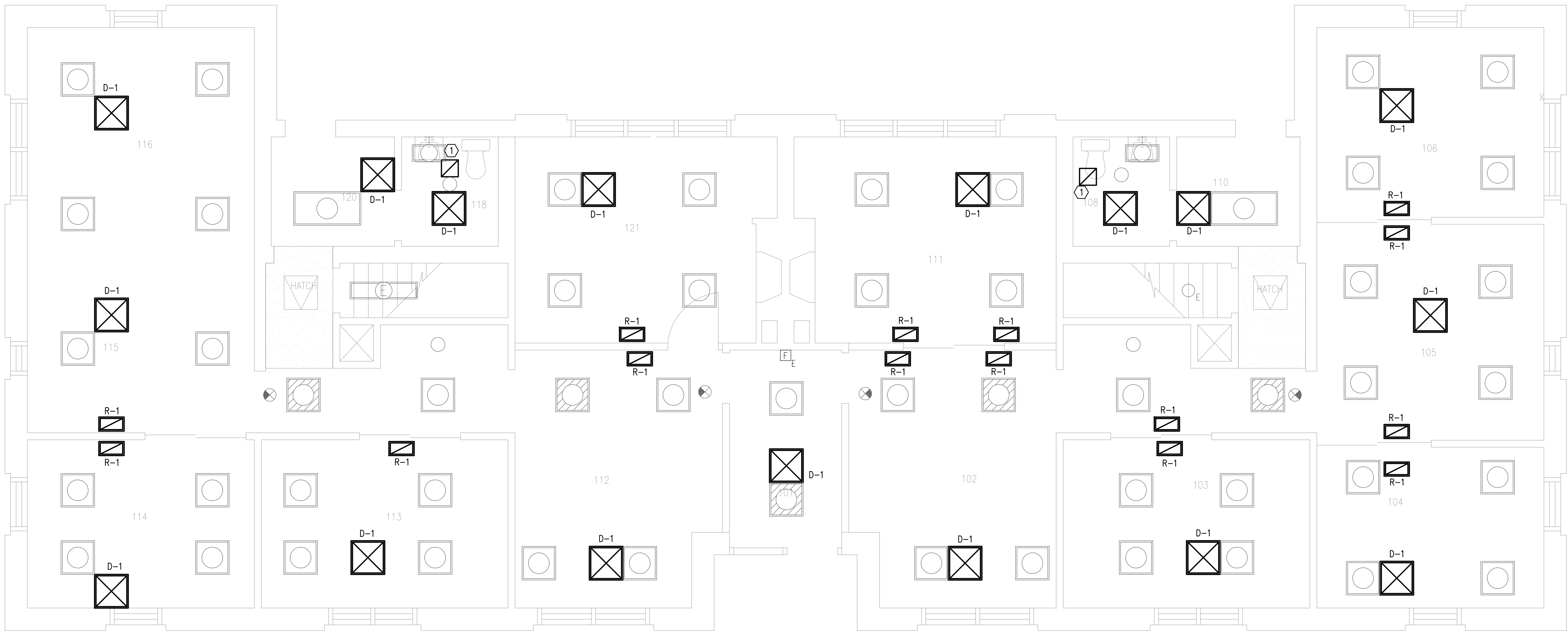
- ## FIRE SPRINKLER RISER DETAIL NOTES
- (A) SITE PLAN CONTINUATION. MINIMUM BURY DEPTH 42 INCHES BELOW GRADE. REFER TO SITE PLAN FOR CONTINUATION.
  - (B) INSTALL MECHANICAL SEAL AT ALL BELOW GRADE PIPE PENETRATIONS.
  - (C) SUPERVISED DOUBLE-CHECK BACKFLOW PREVENTER.
  - (D) WET PIPE SPRINKLER VALVE WITH READY RISER AND PRESSURE GAUGE.
  - (E) FLOW INDICATOR.
  - (F) FIRE DEPARTMENT CONNECTION CHECK VALVE.
  - (G) DRY PIPE SPRINKLER CONTROL VALVE WITH READY RISER AND PRESSURE GAUGE.
  - (H) AIR PRESSURE MAINTENANCE DEVICE.
  - (I) WET PIPE AND DRY PIPE SPRINKLER MAINS, REFER TO FLOOR PLANS FOR CONTINUATION.
  - (J) INSPECTOR TEST CONNECTION DRAIN PIPING, ROUTE TO BUILDING EXTERIOR.
  - (K) SUPERVISED ISOLATION VALVE.
  - (L) PEDESTAL FIRE DEPARTMENT CONNECTION. PROVIDE AUTOMATIC BALL DRIP VALVE AT TOP OF RISER.
  - (M) ELECTRIC ALARM BELL. CONTRACTOR MUST PROVIDE WIRING FROM BELL TO FLOW INDICATOR DEVICES.

LEGEND	
	CHROME PENDENT
	EXPOSED PENDENT
	CONCEALED
	FIRE DEPARTMENT CONNECTION
	FIRE LINE
	ELECTRIC FIRE ALARM BELL

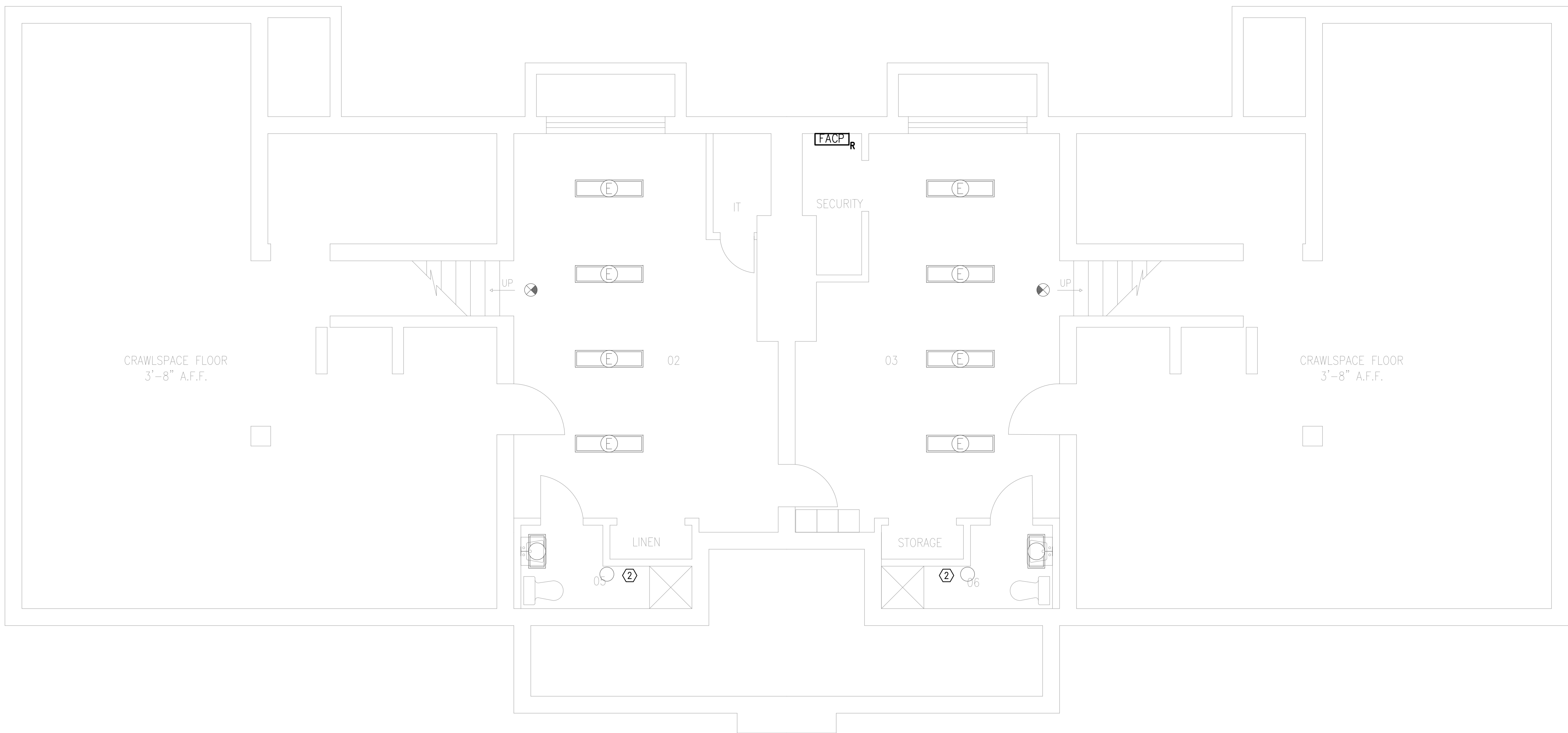
2013 © COPYRIGHT SES PROJ. #12197  
PERMISSION TO REPRODUCE ANY PART OF THIS DOCUMENT IS HEREBY  
GRANTED SOLELY FOR THE PURPOSE OF THE CONSTRUCTION OF THE  
PROJECT OR THE ARCHIVING OF THIS PROJECT. UNAUTHORIZED USE  
OF THIS DOCUMENT WITHOUT THE WRITTEN PERMISSION OF SPECIALIZED  
ENGINEERING SOLUTIONS IS PROHIBITED BY COPYRIGHT LAW.  
DO NOT SCALE DRAWING. ALL DIMENSIONS AND CLEARANCES SHALL  
BE VERIFIED FROM APPROPRIATE SOURCES. ALL WORK SHALL BE  
COORDINATED PRIOR TO INSTALLATION. SEE SPECIFICATIONS.

[illegible]

0 1 2 3 4 5 6 7 8 9 10  
one eighth inch = one foot  
one quarter inch = one foot  
three eighths inch = one foot  
one half inch = one foot  
three quarters inch = one foot  
one inch = one foot  
one and one half inches = one foot  
two inches = one foot  
three inches = one foot



GROUND LEVEL FLOOR PLAN - MECHANICAL  
SCALE: 1/4" = 1'-0"



BASEMENT FLOOR PLAN - MECHANICAL  
SCALE: 1/4" = 1'-0"

MECHANICAL GENERAL NOTES

- A. EXISTING DIFFUSERS AND GRILLES SHALL BE REPLACED AS PART OF THE PROJECT. QUANTITY AND LOCATION OF DIFFUSERS AND GRILLES SHOWN ARE APPROXIMATE. VERIFY QUANTITY PRIOR TO COMMENCEMENT OF NEW WORK. INCLUDE 15% ADDITIONAL QUANTITY OF DIFFUSERS AND GRILLES IN BID AMOUNT TO ENSURE ADEQUATE NUMBER OF UNITS AND/OR TO PROVIDE SPARE UNITS.
- B. COORDINATE WORK WITH OWNER TO AVOID INTERFERENCES. WEST SIDE OF BUILDING SHALL BE VACANT FROM JUNE TO AUGUST. EAST SIDE OF BUILDING SHALL BE OCCUPIED DURING NORMAL BUSINESS HOURS; WORK SHALL BE CONDUCTED AFTER BUSINESS HOURS, OR LIMITED TO INDIVIDUAL ROOMS OR SPACES AS AUTHORIZED BY THE OWNER.
- C. NEW ACOUSTICAL CEILING TILE SHALL BE INSTALLED TO ALIGN WITH EXISTING DIFFUSERS AND GRILLES TO AVOID RELOCATING DUCT CONNECTIONS. DUCTWORK IS LOCATED IN ATTIC SPACE AND PENETRATES ORIGINAL DRYWALL. CEILING AT +8'-6". NEW ACOUSTICAL CEILING TILE SHALL BE INSTALLED AT +8'-0".
- D. REFER TO DIFFUSER, REGISTER AND GRILLE SCHEDULE FOR OPTIONS FOR NEW. VERIFY DUCT CONNECTION SIZE OF DIFFUSERS AND GRILLES; REPLACE WITH SAME SIZE.
- E. RETURN GRILLES R-1 SERVE TRANSFER DUCTS. CONNECT NEW GRILLES TO EXISTING DUCTWORK.

MECHANICAL SHEET NOTES

- ① EXISTING EXHAUST FAN GRILLE TO REMAIN. CLEAN SURFACES PRIOR TO RE-INSTALLATION.
- ② COMBINATION EXHAUST FAN/LIGHT TO BE REPLACED BY ELECTRICAL CONTRACTOR.

DIFFUSER, REGISTER AND GRILLE SCHEDULE

MARK	FUNCTION	TYPE	SIZE (INCHES)		FRAME	MATERIAL	MAX. NC	FINISH	MANUFACTURER	MODEL	REMARKS
			NECK	FACE							
D-1	SUPPLY	PLAQUE	60	24 x 24	LAY-IN	STEEL	25	WHITE	KRUEGER	PLQ	(1)
	SUPPLY	PLAQUE	80	24 x 24	LAY-IN	STEEL	25	WHITE	KRUEGER	PLQ	(1)
	SUPPLY	PLAQUE	100	24 x 24	LAY-IN	STEEL	25	WHITE	KRUEGER	PLQ	(1)
R-1	RETURN	SINGLE DEFL	14 x 6	16 x 8	SURFACE	ALUMINUM	25	WHITE	KRUEGER	SS80	(1)(2)

REMARKS

- (1) COORDINATE BORDER OR FRAME TYPE WITH CEILING OR WALL TYPE. MATCH EXISTING NECK SIZE.
- (2) 35 DEGREE DEFLECTION BLADES.

2013 © COPYRIGHT. SEE PROJ. #12197  
PERMISSION TO REPRODUCE ANY PART OF THIS DOCUMENT IS HEREBY  
GRANTED SOLELY FOR THE PURPOSE OF THE CONSTRUCTION OF THE  
PROJECT OR THE ARCHIVING OF THIS PROJECT. UNAUTHORIZED USE  
OF THIS DOCUMENT WITHOUT THE WRITTEN PERMISSION OF SPECIALIZED  
ENGINEERING SOLUTIONS IS PROHIBITED BY COPYRIGHT LAW.

DO NOT SCALE DRAWING. ALL DIMENSIONS AND CLEARANCES SHALL  
BE VERIFIED FROM APPROPRIATE SOURCES. ALL WORK SHALL BE  
COORDINATED PRIOR TO INSTALLATION. SEE SPECIFICATIONS.

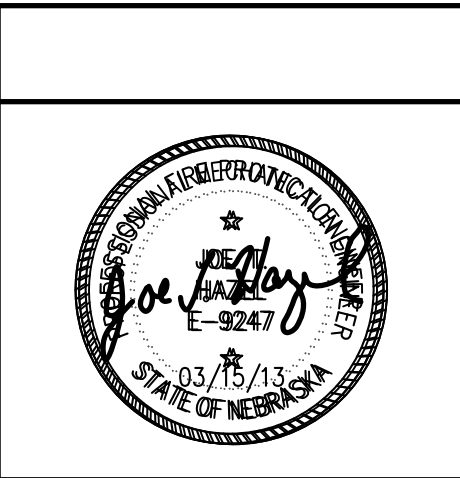
Revisions	Date

**CONSULTANTS:**

**SPECIALIZED ENGINEERING SOLUTIONS**

11235 Davenport Street  
Suite 104  
Omaha, NE 68154

Phone: 402.991.5520  
Fax: 402.991.5394  
www.specializedeng.com

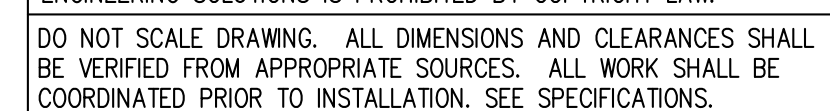
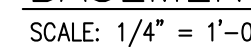
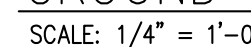


**ARCHITECT/ENGINEERS:**

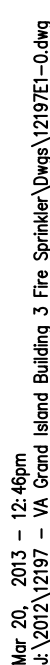
**ALTUS architectural studios**

11235 Davenport Street  
Suite 104  
Omaha, NE 68154  
Phone: 402.242.2422 Fax: 402.242.2423  
altusarch.com

<b>Drawing Title</b> <b>BASEMENT &amp; GROUND FLOOR PLANS - MECHANICAL</b>	<b>Project Title</b> NEBRASKA - WESTERN IOWA HEALTH CARE SYSTEM SPRINKLER SYSTEM BUILDING 3	<b>Project Number</b> 636-12-113	<b>Office of Construction and Facilities Management</b>  Department of Veterans Affairs
<b>Approved: Project Director</b>	<b>Location</b> GRAND ISLAND, NEBRASKA	<b>Drawing Number</b> <b>M1-0</b> Dwg. 3 of 6	
<b>Date</b> 03-15-2013	<b>Checked</b> JTH	<b>Drawn</b> LRR	

 Department of  
Veterans Affairs





- GREEN INSULATED  
TO WIRE WITH  
ING, RECEPTACLE AND  
INDIVIDUAL (DEDICATED)  
AL CONDUCTORS FOR  
20V OR 277V PHASE  
CTOR SERVED FROM A  
POLE CIRCUIT BREAKER

INSTALL GROUND INSULATED GROUND WIRE WITH LIGHTING, RECEPTACLE AND EQUIPMENT BRANCH CIRCUITS.	2013.02 COPYRIGHT © 2013 PERMISSION TO REPRODUCE ANY PART OF THIS DOCUMENT IS HEREBY GRANTED SOLELY FOR THE PURPOSE OF THE CONSTRUCTION OF THE PROJECT OR THE ARCHIVING OF THIS PROJECT. UNAUTHORIZED USE OF THIS DOCUMENT WITHOUT THE WRITTEN PERMISSION OF SPECIALIZED ENGINEERING SOLUTIONS IS PROHIBITED BY COPYRIGHT LAW.	SES PROJ. #2197
INSTALL INDIVIDUAL (DEDICATED) NEUTRAL CONDUCTORS FOR EACH 120V OR 277V BRANCH CIRCUIT SERVED FROM SINGLE POLE CIRCUIT BREAKER	DO NOT SCALE DRAWING. ALL DIMENSIONS AND CLEARANCES SHALL BE VERIFIED FROM APPROPRIATE SOURCES. ALL WORK SHALL BE COORDINATED PRIOR TO INSTALLATION. SEE SPECIFICATIONS.	

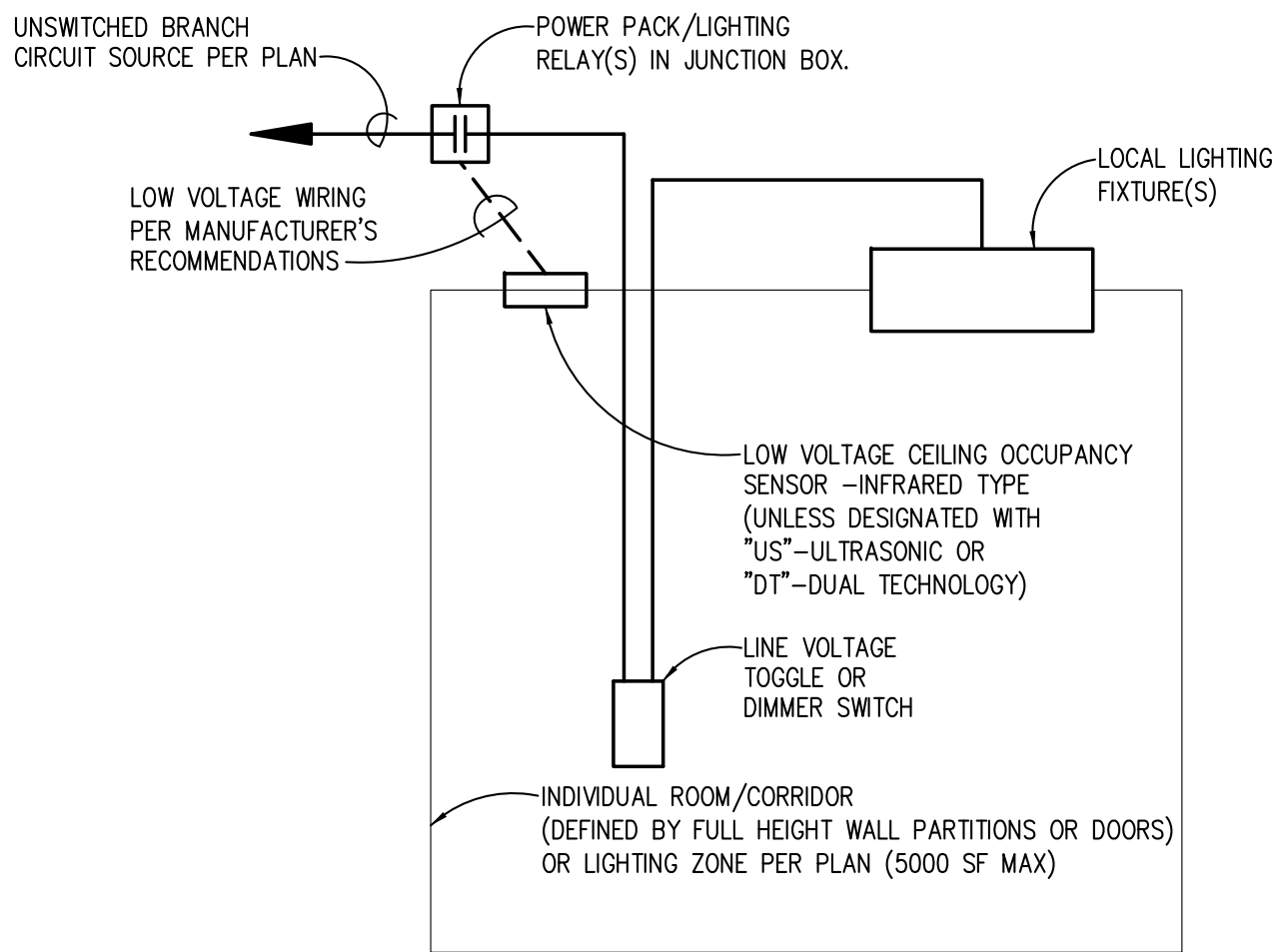
[illegible]



ELECTRICAL SYMBOLS			
LIGHTING AND POWER "X" INDICATES FIXTURE NUMBER IN SCHEDULE			
	FLUORESCENT FIXTURE		FLUORESCENT STRIP LIGHT
	HORIZONTAL VANITY FIXTURE		VERTICAL VANITY FIXTURE
	CEILING FIXTURE		EMERGENCY BATTERY FIXTURE
	SHADED FIXTURES REPRESENT BATTERY PACKS OR EMERGENCY CIRCUIT		WALL MOUNTED EXIT SIGN WITH DIRECTIONAL ARROW
	CEILING MOUNTED EXIT SIGN WITH DIRECTIONAL ARROW		CEILING OCCUPANCY SENSOR (LOCAL RELAY)
	CEILING OCCUPANCY SENSOR (REMOTE RELAY)		WALL SWITCH OCCUPANCY SENSOR (LOCAL RELAY)
	SWITCH - SINGLE POLE		MANUAL DIMMER OR FAN SPEED CONTROL
	SWITCH - 3-WAY		HOMERUN TO PANEL (NUMBER OF ARROWS INDICATES NUMBER OF CIRCUITS)
	RECEPTACLE - DUPLEX		CIRCUIT BREAK
	LIGHTING PANEL		
	BRANCH CIRCUIT CONCEALED IN CEILING OR WALL		
FIRE ALARM SYSTEM "W" INDICATES WALL MOUNTED UNLESS NOTED OTHERWISE			
	AUTOMATIC SMOKE DETECTOR - CEILING		STROBE - CEILING
	AUTOMATIC HEAT DETECTOR - CEILING		HORN - CEILING
	SAMPLING TUBE TYPE SMOKE DETECTOR		HORN & STROBE COMBINATION - CEILING
	COMBINATION FIRE/SMOKE DAMPER		SPEAKER - CEILING
	SMOKE DAMPER		SPEAKER & STROBE COMBINATION - CEILING
	MAGNETIC DOOR HOLDER		CHIME - CEILING
	FIRE FIGHTER'S TELEPHONE JACK		CHIME & STROBE COMBINATION - CEILING
	CONTROL PANEL		BELL - CEILING
	ANNUNCIATOR PANEL		BELL & STROBE COMBINATION - CEILING
	FIRE SPRINKLER VALVE TAMPER SWITCH		MANUAL STATION
	FIRE SPRINKLER FLOW SWITCH		CONTROL MODULE
			MONITORING MODULE
TELECOMMUNICATIONS			
	COMMUNICATIONS OUTLET		WIRELESS ACCESS POINT - CEILING
MISCELLANEOUS			
	WALL CLOCK HANGER OUTLET		DOUBLE FACE CLOCK
	WALL MOUNTED CLOCK		COMBINATION CLOCK / SPEAKER UNIT
	THERMOSTAT		CHIME
	AQUASTAT		BELL
EP	SUBSCRIPT "EP" APPLIED TO ANY SYMBOL INDICATES EXPLOSION PROOF CLASS, GROUP & DIVISION AS NOTED	RT	SUBSCRIPT "RT" APPLIED TO ANY SYMBOL INDICATES RAIN/TIGHT NEMA 3R OR EQUIVALENT
WP	SUBSCRIPT "WP" APPLIED TO ANY SYMBOL INDICATES WEATHERPROOF NEMA TYPE 4 OR EQUIVALENT	PD	SUBSCRIPT "PD" ADDED TO ANY FLOOR OUTLET INDICATES PEDestal MOUNTED
E	SUBSCRIPT "E" ADDED TO ANY SYMBOL INDICATES EXISTING	P	SUBSCRIPT "P" ADDED TO ANY SYMBOL INDICATES PILOT LIGHT
V	SUBSCRIPT "V" ADDED TO ANY SYMBOL INDICATES VOICE	W	SUBSCRIPT "W" ADDED TO ANY SYMBOL INDICATES WALL PHONE
D	SUBSCRIPT "D" ADDED TO ANY SYMBOL INDICATES DATA	(I)	SHEET NOTE
R	SUBSCRIPT "R" ADDED TO ANY SYMBOL INDICATES REUSED	GDA	GENERATOR DERANGEMENT ALARM PANEL
C	SUBSCRIPT "C" ADDED TO ANY SYMBOL INDICATES CEILING	PART	SUBSCRIPT "PART" ADDED TO ANY SYMBOL INDICATES PARTIAL

LIGHTING FIXTURE SCHEDULE										
FIXT NO.	MANUFACTURER	SUBS. (NOTE B)	CATALOG NO. (NOTE A)	LAMP DATA		VOLTS	INPUT WATTS	MOUNTING	DESCRIPTION	REMARKS
				QUANTITY AND SIZE	TYPE					
A1	COOPER (CORELITE)	Y	R3-WL-278-1C-UNV-24-T1	2-32W T8	F	120/277	55	CEILING RECESSED	2X4 DIRECT INDIRECT 2 LAMP	NOTE 3
A2	COOPER (CORELITE)	Y	R3-WL-278-1C-UNV-22-T1	2-17W T8	F	120/277	30	CEILING RECESSED	2X2 DIRECT INDIRECT 2 LAMP	NOTE 3
A3B	COOPER (CORELITE)	Y	R3-WL-278-1B-UNV-22-T1	2-17W T8	F	120/277	30	CEILING RECESSED	2X2 DIRECT INDIRECT 2 LAMP EMERGENCY	NOTE 3
A4	COOPER (CORELITE)	Y	R3-WL-278-1D-UNV-22-T1	2-17W T8	F	120/277	30	CEILING RECESSED	2X2 DIRECT INDIRECT 2 LAMP DIMMABLE	NOTE 3
D1	ELITE LIGHTING	P	B26C-LED-18W-DM10-120-FL-38K-L817-CL-WH	INCLUDED WITH FIXTURE	LED	120/277	18	CEILING RECESSED	6" OPEN DOWNLIGHT 800 LUMEN	---
D2	BROAN	Y	QTR80FLT	2-18W GU24 INCLUDED WITH FIXTURE	CF	120/277	36	CEILING RECESSED	EXHAUST FAN/LIGHT	---
W2	PRUDENTIAL	P	WAL14-WFA-1T8-02-TMW-SC-UNV-WM-10THD	1-17W T8	F	120/277	20	WALL SURFACE	2' VANITY	NOTE 1
X1	COOPER (SURE-LITES)	Y	APX7-R	INCLUDED WITH FIXTURE	LED	120/277	2	CEILING SURFACE	EXIT SIGN	NOTE 2
X2	COOPER (SURE-LITES)	Y	AP7-D-R-WH-DH	INCLUDED WITH FIXTURE	LED	120/277	4	CEILING SURFACE	EXIT SIGN WITH EMERGENCY HEADS	NOTE 2

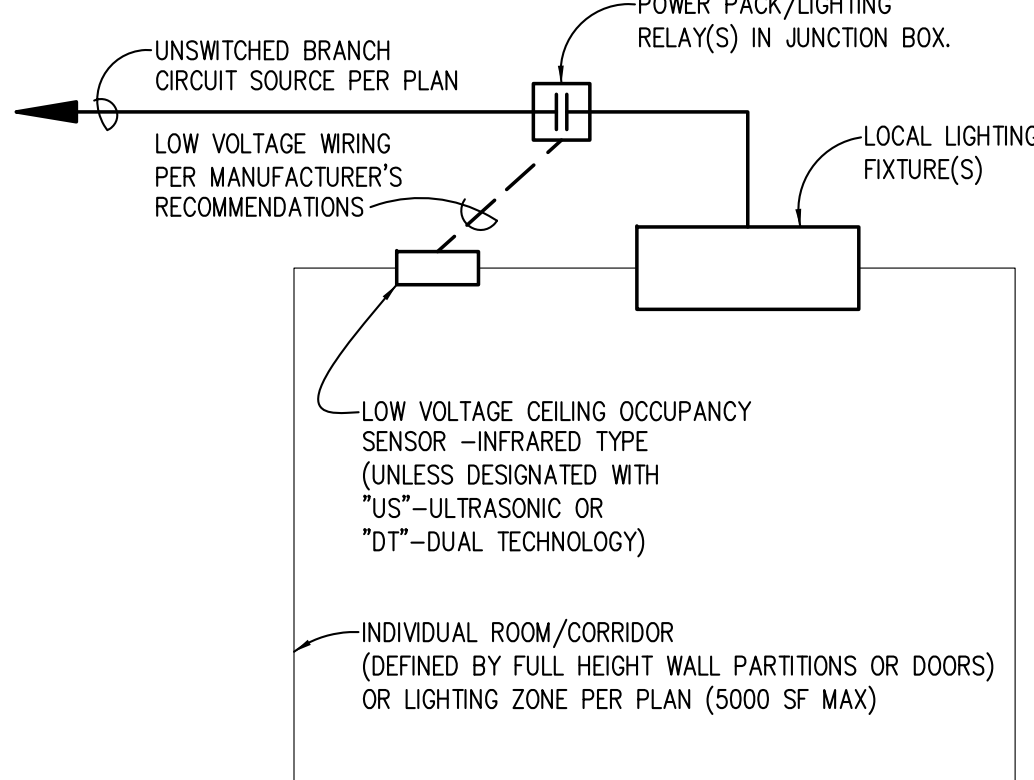
- KEY NOTES:
- WALL MOUNTING - COORDINATE EXACT MOUNTING LOCATION WITH ARCHITECT AND ARCHITECTURAL DETAILS.
  - EXIT SIGNS-REFER TO ELECTRICAL PLANS FOR DIRECTION INDICATORS AND MOUNTING TYPE.
  - BASE BID: PROVIDE FIXTURE SCHEDULED  
ALTERNATE BID #1: REVISE FIXTURES TO BE LED IN LIEU OF T8 FLUORESCENT. IN LIEU OF "278" IN THE CATALOG NUMBER PROVIDE "L35"
- GENERAL NOTES:
- CATALOG NUMBER VERIFICATION-CONTRACTOR SHALL VERIFY LIGHTING FIXTURE INSTALLATION REQUIREMENTS AND CATALOG NUMBER PRIOR TO ORDERING.
  - SUBSTITUTIONS - WHERE INDICATED WITH 'N' (NO), NO SUBSTITUTIONS WILL BE ACCEPTED. WHERE INDICATED WITH 'P' (PRIOR APPROVAL), SUBSTITUTIONS MUST BE APPROVED PRIOR TO BID WITH ACCEPTANCE ISSUED BY ADDENDUM. WHERE INDICATED WITH 'Y' (YES), THE FOLLOWING MANUFACTURER'S ARE CONSIDERED ACCEPTABLE EQUIVALENT MANUFACTURER'S, PROVIDED THE EQUIVALENT FIXTURE IS OF THE SAME QUALITY, EFFICIENCY, PERFORMANCE AND CHARACTERISTICS AS THAT SCHEDULED:  
1. AQUITY BRANDS  
2. COOPER  
3. HUBBEL  
SEE PROJECT SPECIFICATIONS FOR SPECIFIC MANUFACTURER/MODEL EQUIVALENCY OF COMMONLY USED LIGHTING FIXTURE TYPES.
  - FIXTURE NUMBER SUFFIX 'M' (SEE PLANS) - PROVIDE FIXTURE WITH TWO BALLASTS AND CONNECT TO PROVIDE UNIFORM MULTI-LEVEL LIGHTING CONTROL.
  - FIXTURE NUMBER SUFFIX 'D' (SEE PLANS) - PROVIDE FIXTURE WITH DIMMING BALLAST (LINEAR FLUORESCENT - 1% DIM, COMPACT FLUORESCENT - 1% DIM), COORDINATE BALLAST AND DIMMER COMPATIBILITY.
  - FIXTURE NUMBER SUFFIX 'F' (SEE PLANS) - PROVIDE FIXTURE WITH GYPSUM BOARD FLANGE MOUNTING IN LIEU OF ACOUSTICAL GRID MOUNTING.
  - FIXTURE NUMBER SUFFIX 'B' (SEE PLANS) - PROVIDE FIXTURE WITH INTEGRAL 90 MINUTE BATTERY BALLAST WITH SELF-DIAGNOSTICS TO ILLUMINATE A MINIMUM OF ONE LAMP WITH A TOTAL OUTPUT OF 1400 LUMENS. CONNECT BATTERY SENSING SOURCE INPUT TO UNSWITCHED PORTION OF LOCAL LIGHTING BRANCH CIRCUIT. UNDER NORMAL OPERATION, FIXTURE SHALL BE CONTROLLED (ON/OFF) SIMILAR TO OTHER ROOM LIGHTING FIXTURES UNLESS NOTED FOR 24-HOUR ILLUMINATION.
  - DOWNLIGHT CEILING TRIM FINISH/COLOR SELECTION:  
PROVIDE DOWNLIGHT REFLECTOR FINISH/COLOR AS SPECIFIED IN THE LIGHTING FIXTURE SCHEDULE. SELECT CEILING TRIM FINISH/COLOR TO COORDINATE WITH CEILING TYPE. "WHITE" TRIM FOR DOWNLIGHTS MOUNTED IN WHITE (ACOUSTICAL TILE OR PAINT) CEILINGS. "CLEAR" (TO MATCH REFLECTOR FINISH/COLOR) FOR DOWNLIGHTS MOUNTED IN ALL OTHER COLOR CEILINGS (ACOUSTICAL TILE OR PAINT).



- NOTES:
- CEILING OCCUPANCY SENSOR (LOCAL RELAY) MANUFACTURER/  
ULTRASONIC TYPE - LITHONIA LUSO, LEVITON OSC-UOW OR WATT STOPPER UT-305  
INFRARED TYPE - LITHONIA LIRO, LEVITON OSC-IOW OR WATT STOPPER CI-305  
DUAL TECHNOLOGY TYPE - LITHONIA LMTD, LEVITON OSC-MOW OR WATT STOPPER DT-305
  - POWER PACK/LIGHTING RELAY MANUFACTURER/  
LITHONIA LPCS, LEVITON OSP/OSA OR WATT STOPPER BZ100
  - COORDINATE OCCUPANCY SENSOR COVERAGE RATINGS TO SERVE ENTIRE SPACE.
  - MULTIPLE OCCUPANCY SENSORS IN SAME ROOM/CORRIDOR OR ZONE SHALL CONTROL A SINGLE COMMON LIGHTING RELAY.
  - PROVIDE ALL NECESSARY COMPONENTS FOR A COMPLETE INSTALLATION.

CEILING OCCUPANCY SENSOR WITH LOCAL SWITCHING OR DIMMING (LOCAL RELAY)

SCALE: NONE



- NOTES:
- CEILING OCCUPANCY SENSOR (LOCAL RELAY) MANUFACTURER/  
ULTRASONIC TYPE - LITHONIA LUSO, LEVITON OSC-UOW OR WATT STOPPER UT-305  
INFRARED TYPE - LITHONIA LIRO, LEVITON OSC-IOW OR WATT STOPPER CI-305  
DUAL TECHNOLOGY TYPE - LITHONIA LMTD, LEVITON OSC-MOW OR WATT STOPPER DT-305
  - POWER PACK/LIGHTING RELAY MANUFACTURER/  
LITHONIA LPCS, LEVITON OSP/OSA, OR WATT STOPPER BZ100
  - COORDINATE OCCUPANCY SENSOR COVERAGE RATINGS TO SERVE ENTIRE SPACE.
  - MULTIPLE OCCUPANCY SENSORS IN SAME ROOM/CORRIDOR OR ZONE SHALL CONTROL A SINGLE COMMON LIGHTING RELAY.
  - PROVIDE ALL NECESSARY COMPONENTS FOR A COMPLETE INSTALLATION.

CEILING OCCUPANCY SENSOR (LOCAL RELAY)

SCALE: NONE

Revisions	Date	CONSULTANTS: <b>SPECIALIZED ENGINEERING SOLUTIONS</b> 11235 Davenport Street Suite 104 Omaha, NE 68154 Phone: 402.991.5520 Fax: 402.991.5394 www.specializedeng.com	ARCHITECT/ENGINEERS: <b>ALTUS architectural studios</b> 11235 Davenport Street Suite 104 Omaha, NE 68154 Phone: 402.991.5520 Fax: 402.991.5394 www.altusarchitect.com	Drawing Title <b>ELECTRICAL SCHEDULES &amp; DETAILS</b>	Project Title <b>NEBRASKA - WESTERN IOWA HEALTH CARE SYSTEM SPRINKLER SYSTEM BUILDING 3</b>	Drawing Number <b>E2-0</b> Dwg. 6 of 6	Office of Construction and Facilities Management Department of Veterans Affairs
				Approved: Project Director	Location <b>GRAND ISLAND, NEBRASKA</b>	Checked <b>MJF</b>	Drawn <b>MJF</b>
				Date <b>03-15-2013</b>			