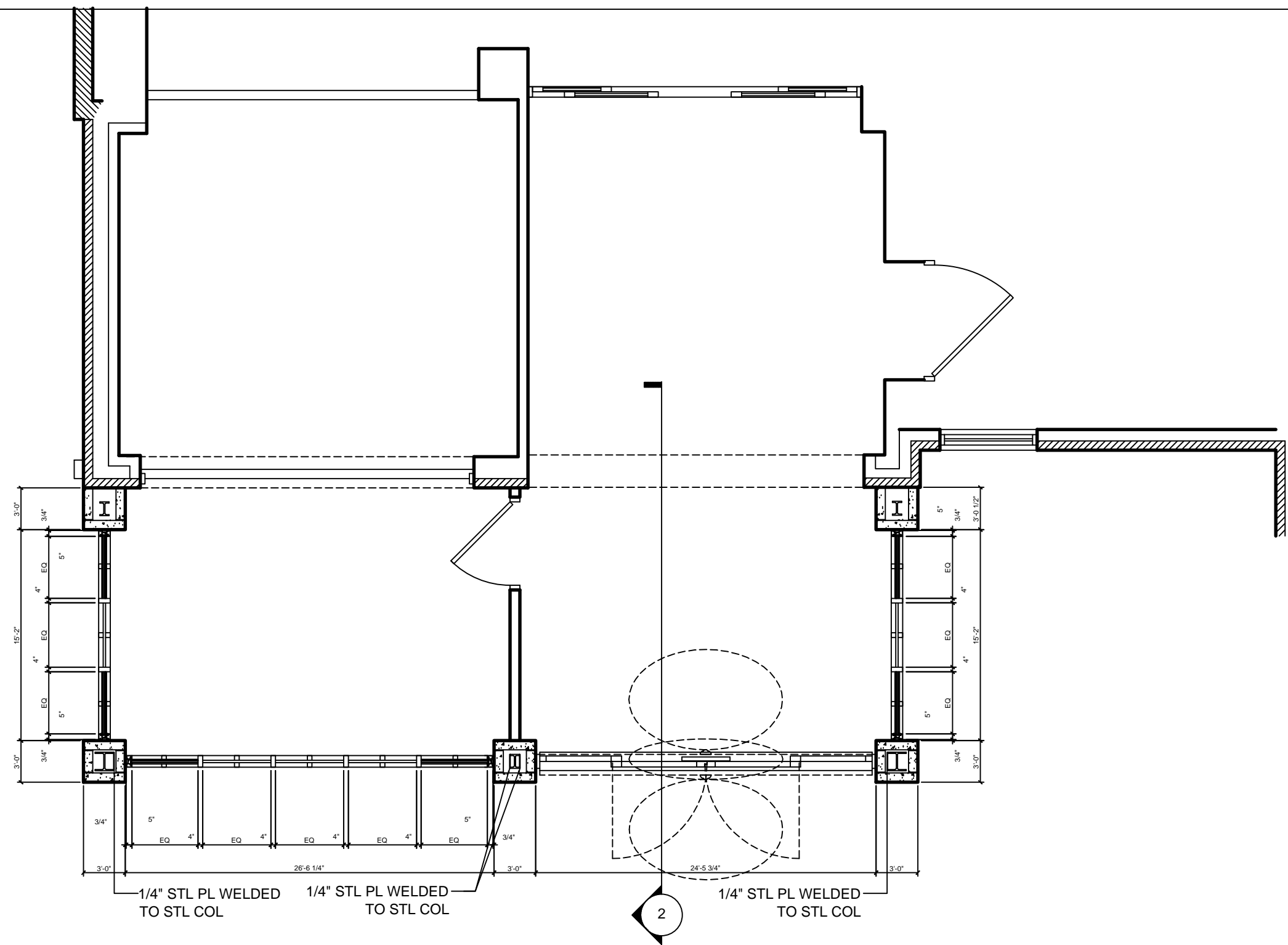
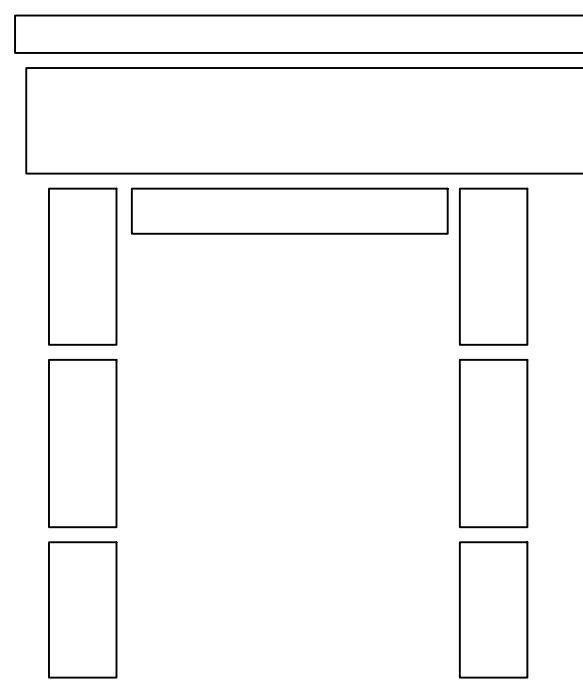
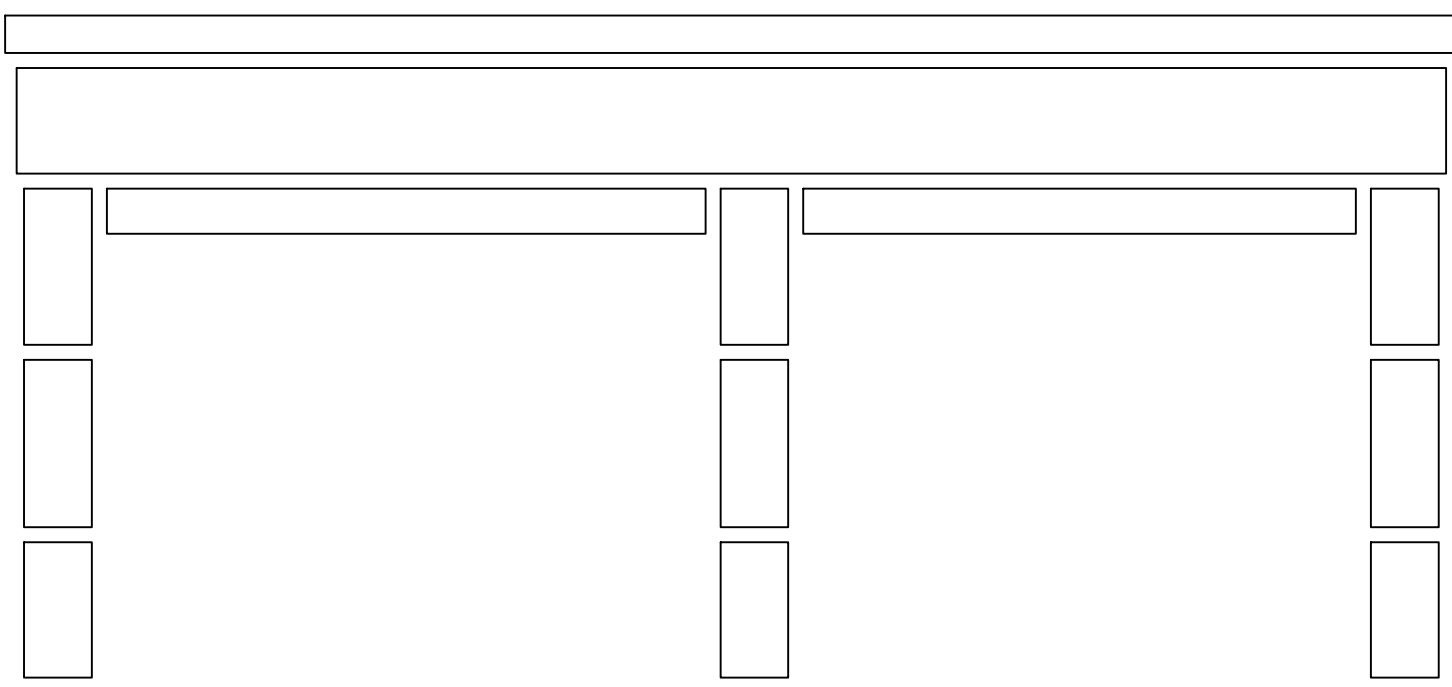
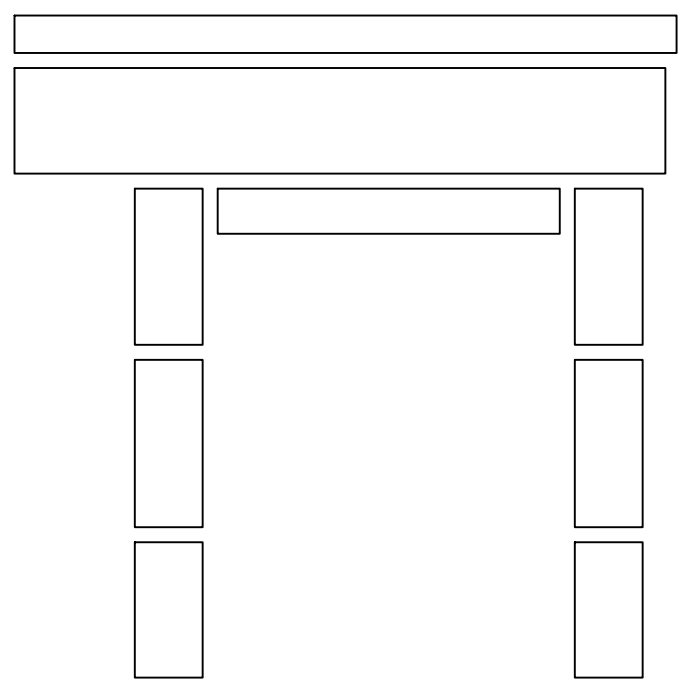


CONSTRUCTION NOTES

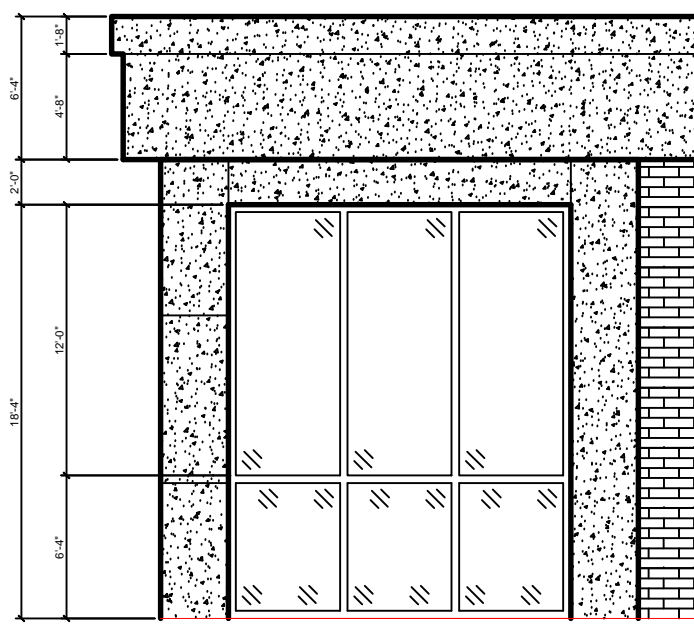
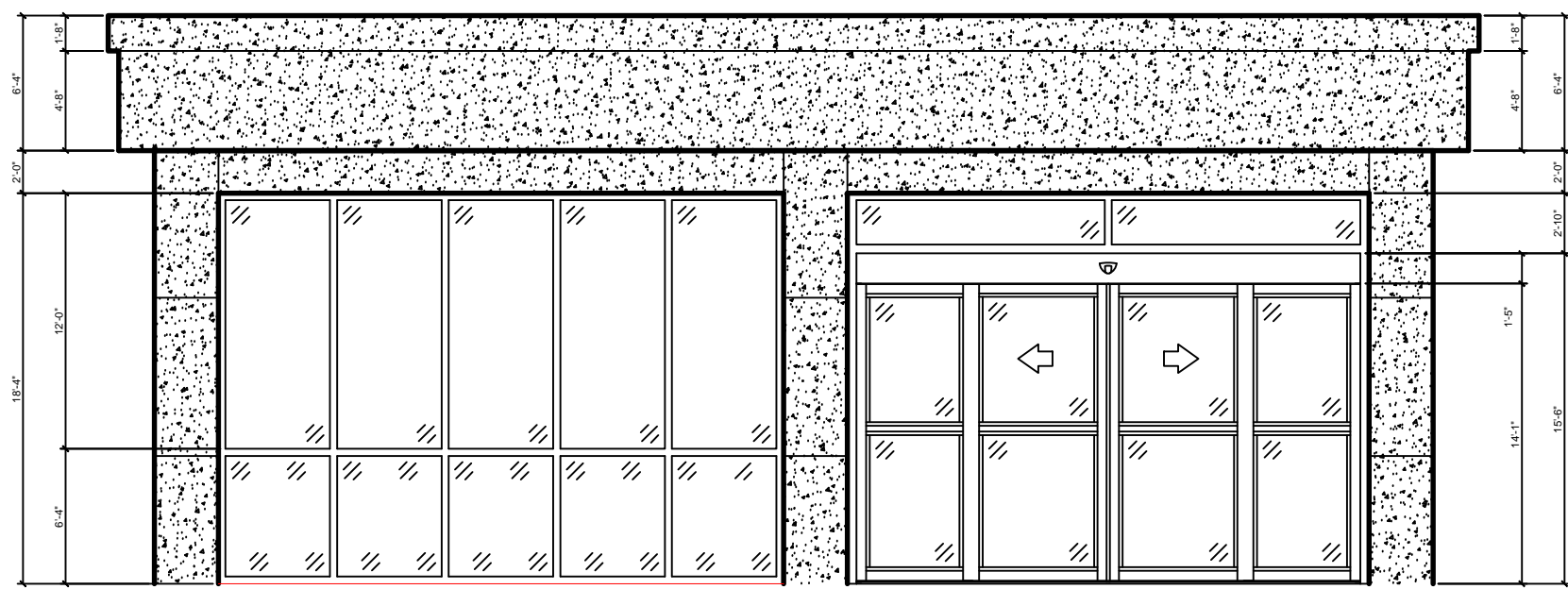
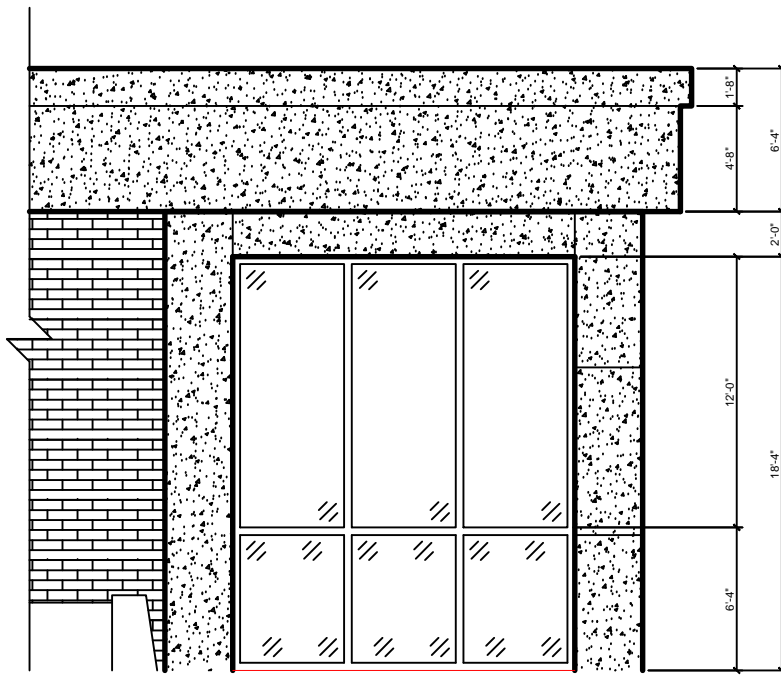
1. CONTRACTOR TO OPERATE TO SMOKE PROTECTION BARRIER LEVEL FOLLOWING DEMO SPEC.
2. PROTECT EXTERIOR VEGETATION FROM DAMAGE.
3. CONTRACTOR TO REMOVE MAIN ENTRY STOREFRONT  
INSTALL 52 KSI STEEL I BEAM AND STEEL COLUMN  
AND PLATE STEEL ACCORDING TO DETAIL 4/A8.3  
INSTALL BLAST RESISTANT DOUBLE GLAZING  
AND SPANDREL WITH HEAVY GAGE FRAMING.
4. FOR REAR ENTRY INSTALL BLAST RESISTANT MYLAR GLAZING FILM SEE SPEC 08-80-01
5. REPLACE SLIDER DOORS WITH HEAVY DUTY  
BLAST RESISTANT DOUBLE GLAZED SLIDER DOORS.



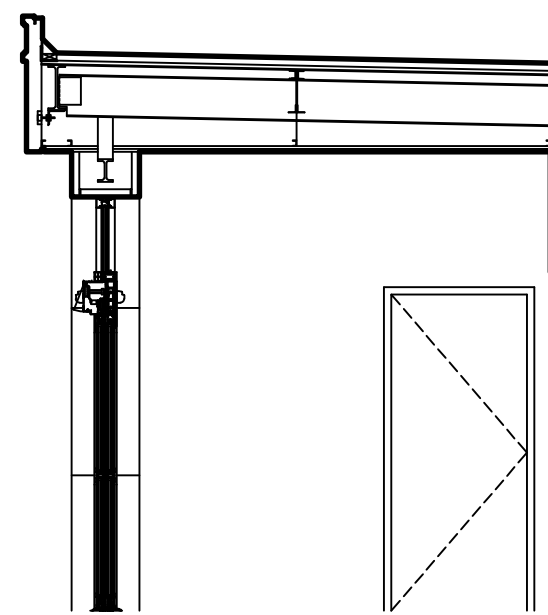
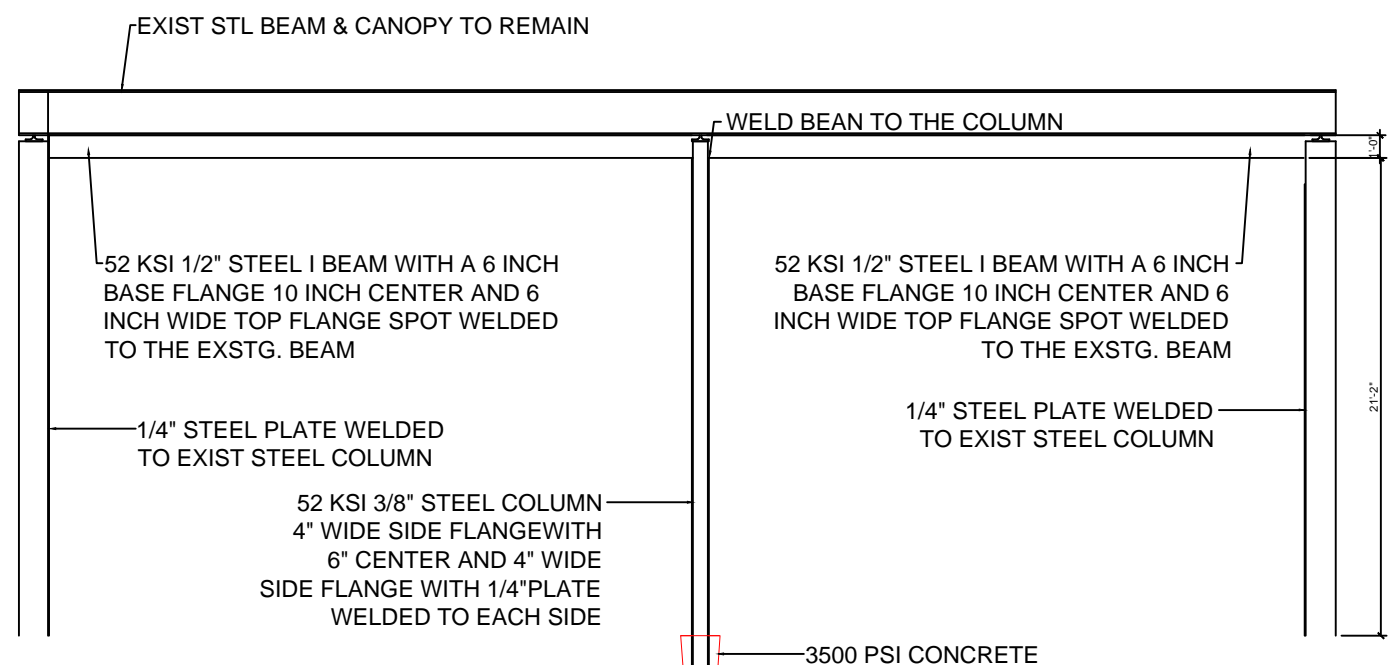
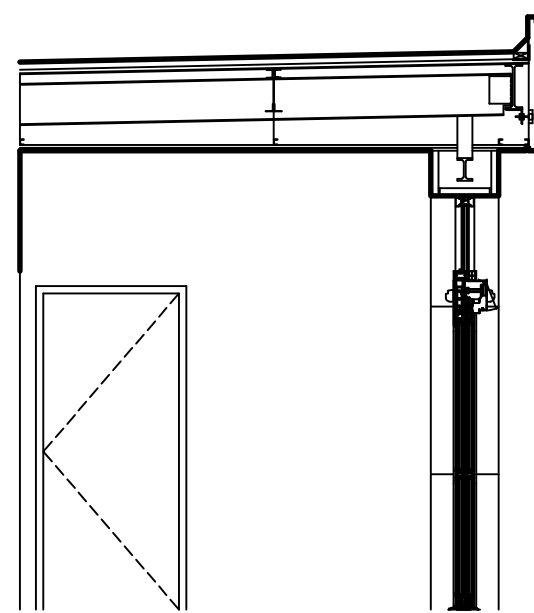
1  
A8.3  
A&B MAIN ENTRANCE FLOOR PLAN  
SCALE: 1/4" = 1'-0"  
INSTALL NEW



2  
A8.3  
A&B MAIN ENTRANCE PRECAST PANELS  
SCALE: 1/4" = 1'-0"  
INSTALL NEW



3  
A8.3  
A&B MAIN ENTRANCE ELEVATIONS  
SCALE: 1/4" = 1'-0"  
INSTALL NEW



4  
A8.3  
A&B MAIN ENTRANCE STRUCTURAL  
SCALE: 1/4" = 1'-0"  
INSTALL NEW

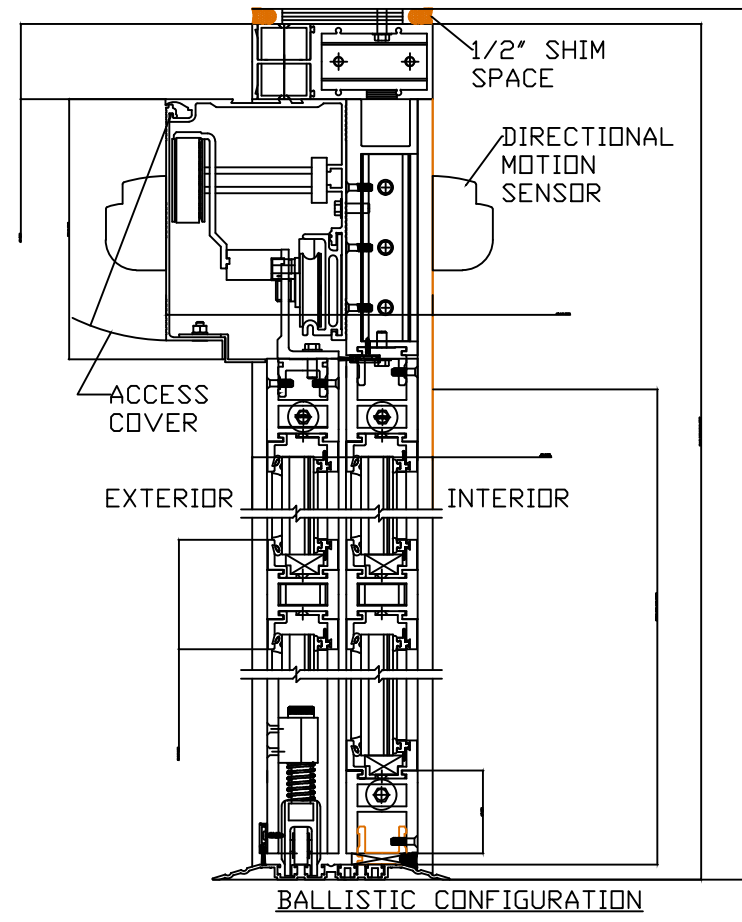
BLAST RESISTANT DOUBLE GLAZED

1/8" TEMPERED .030 1/8" TEMPERED

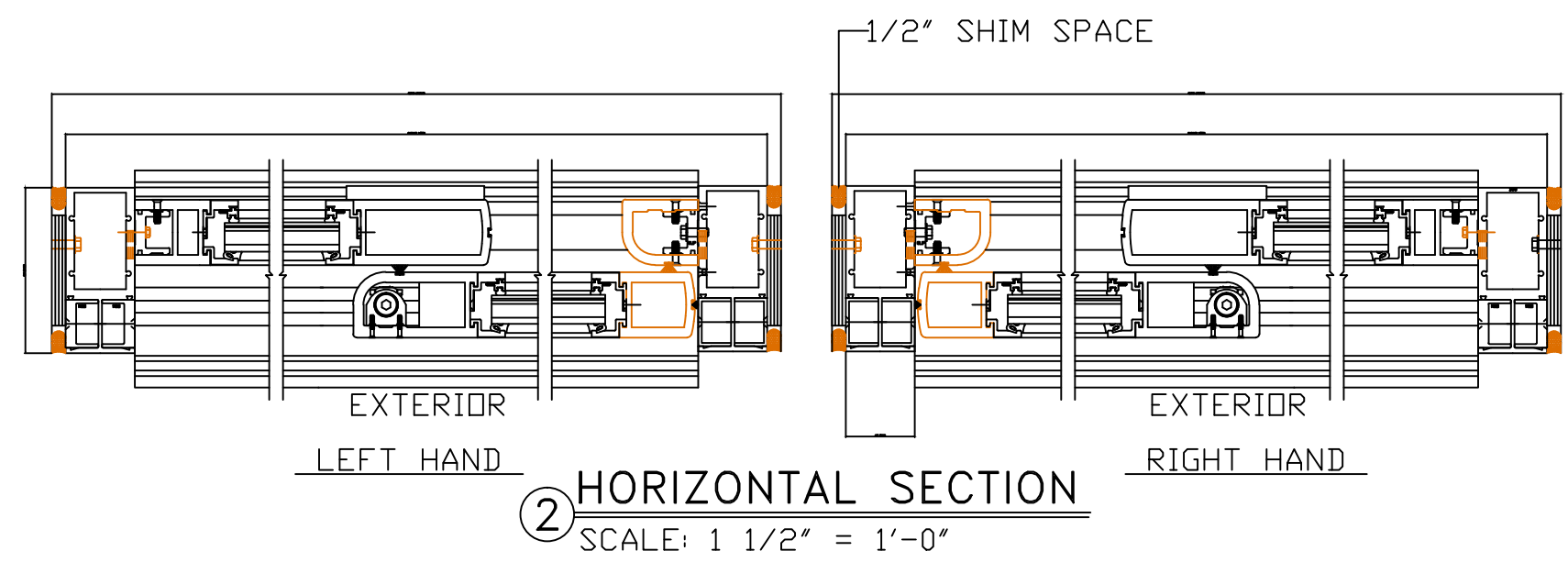
.030 BLAST GLAZING LAMINATION

LOW E ARGON

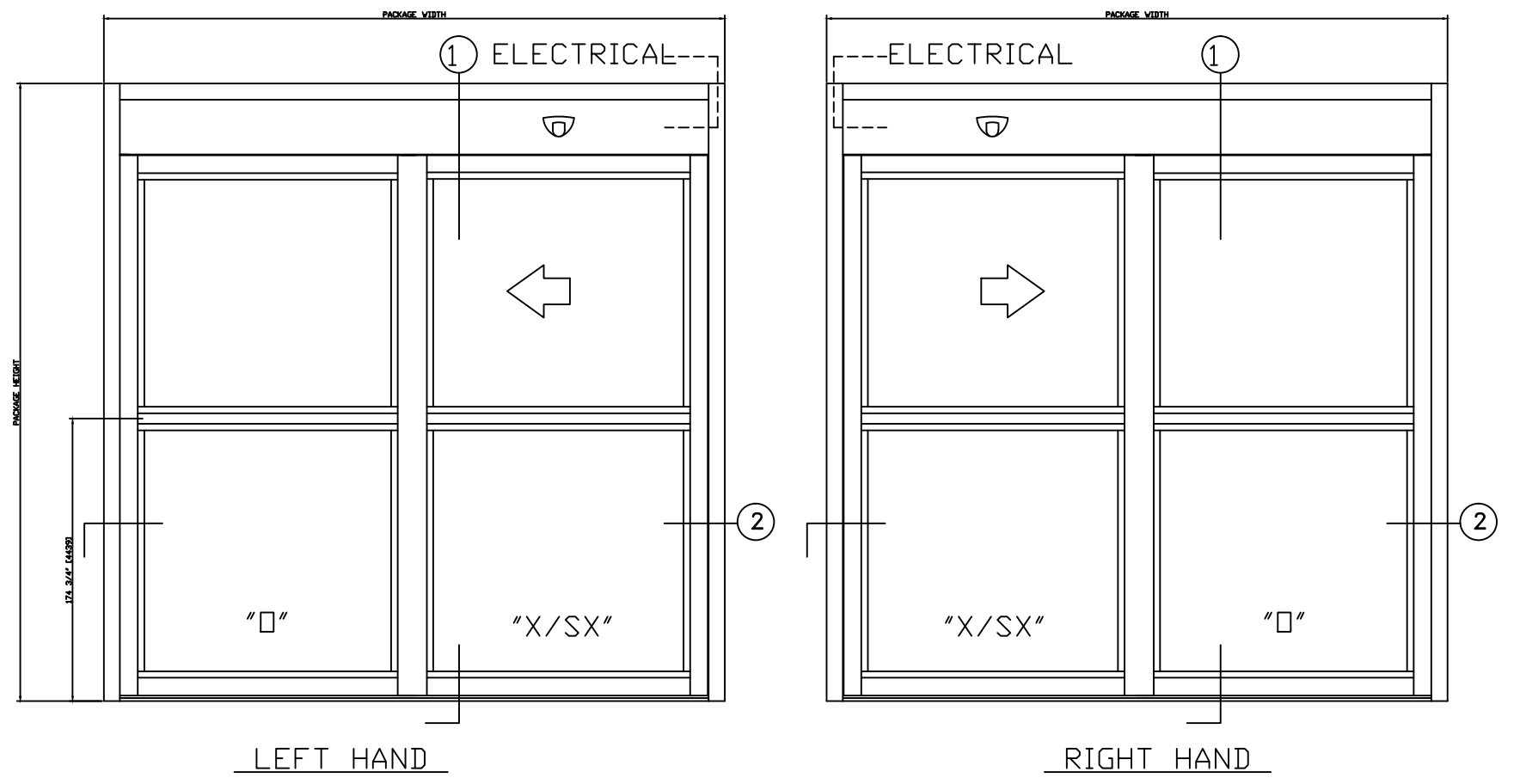
1/4" TEMPERED SOLAR BAN 60 OR EQUIVALENT



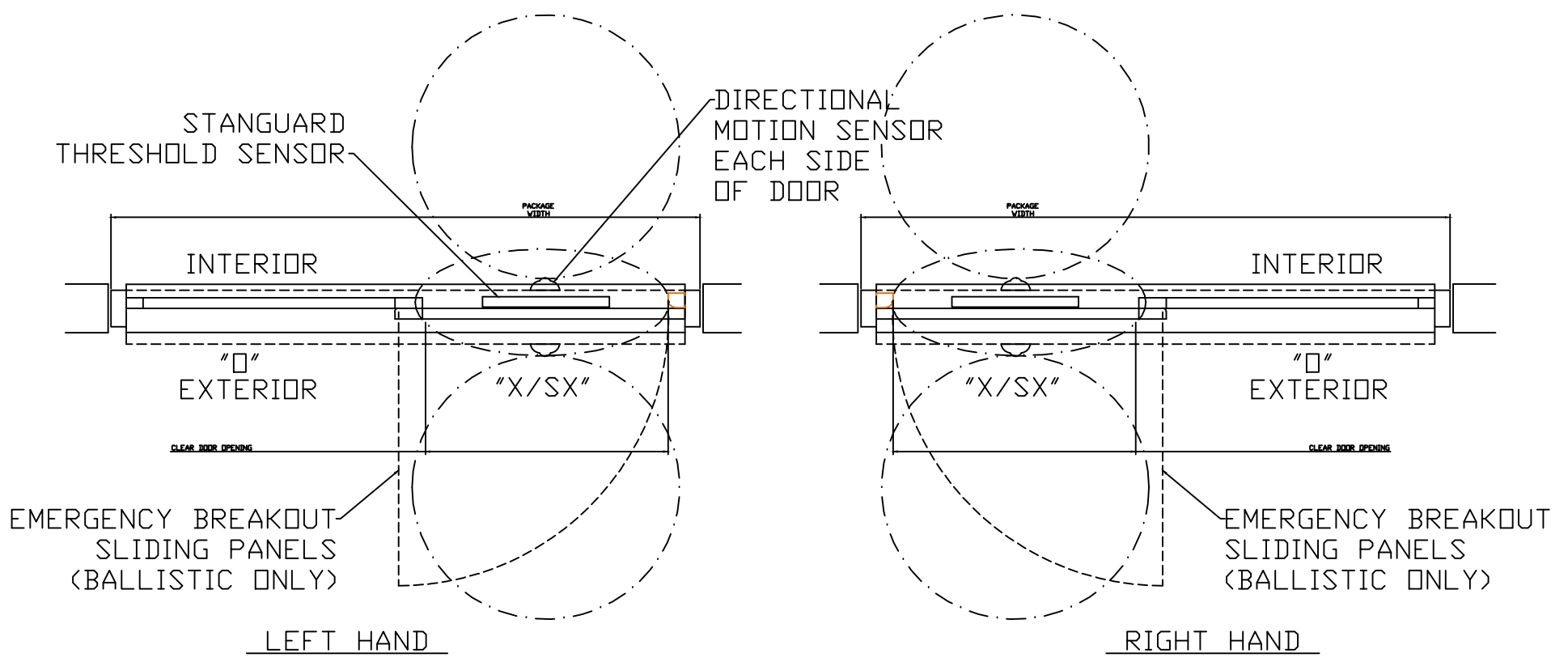
1  
SLIDER DOOR HORIZONTAL SECTION  
SCALE: 2" = 1'-0"  
INSTALL NEW



2  
SLIDER DOOR HORIZONTAL SECTION  
SCALE: 1 1/2" = 1'-0"  
INSTALL NEW



5  
A8.3  
SLIDER DOOR ELEVATION VIEW  
SCALE: 1/2" = 1'-0"  
INSTALL NEW



6  
A8.3  
SLIDER DOOR PLAN VIEW  
SCALE: 1/2" = 1'-0"  
INSTALL NEW

REVISIONS:	DATE:
DETAIL 4/A8.3 REVISED CONSTRUCTION NOTES DOUBLE GLAZING NOTE	23 MAY 2013 23 MAY 2013 23 MAY 2013



Dept. of Veterans Affairs  
Jack C. Montgomery  
Medical Center  
1011 Honor Height Drive  
Muskogee, Oklahoma 74401

APPROVED:
APPROVED:
APPROVED:
APPROVED:

APPROVED:
APPROVED:
APPROVED:
APPROVED:

APPROVED: President A.F.G.E. 2250
APPROVED:
APPROVED:
APPROVED:

APPROVED: Energy Engineer
APPROVED: Safety Manager
APPROVED: Infection Control Nurse
APPROVED: Industrial Hygienist

APPROVED: Medical Center Director
APPROVED: Associate Director
APPROVED: Chief of Staff
APPROVED: Chief of Engineering Service

DRAWING TITLE
A & B WING NEW MAIN STOREFRONT
PROJECT NO. 623-12-102
CONTRACT NO. VA256612C0232
DESIGNED BY: PROUD VETERANS
DRAWN BY: JA
CHECKED BY: NTG
AUTOCAD FILE NAME: 62312102A8.3

PROJECT TITLE
REPLACE WINDOWS BUILDING #1
LOCATION Jack C. Montgomery VA Medical Center

DATE 23 MAY 2013
SCALE AS SHOWN
DRAWING NO. A8.3A
DWG. 26 OF 31

Department of  
Veterans Affairs